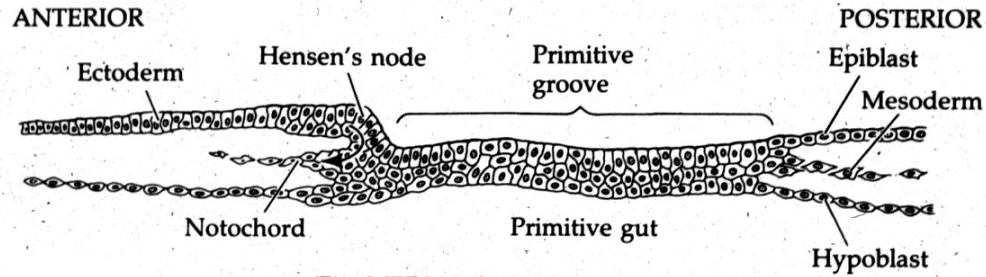
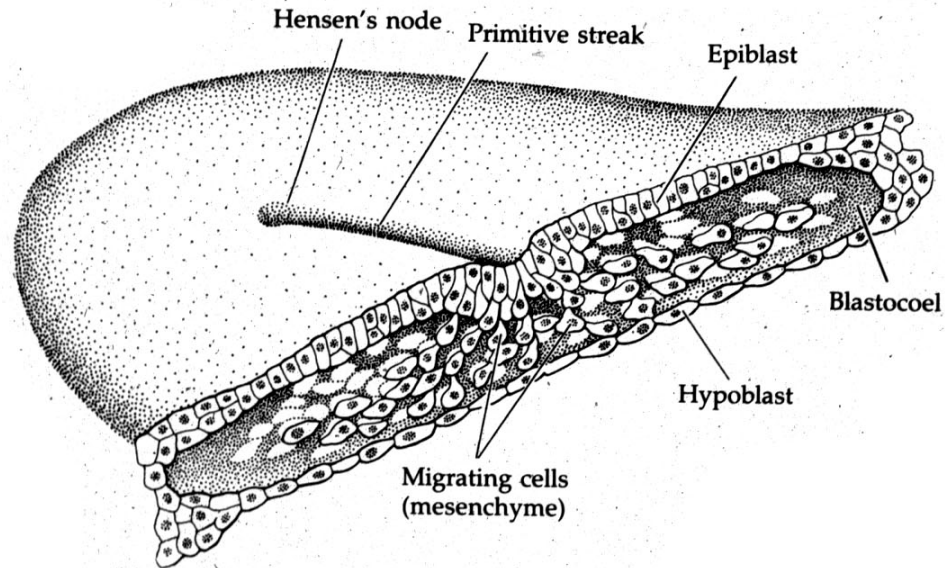


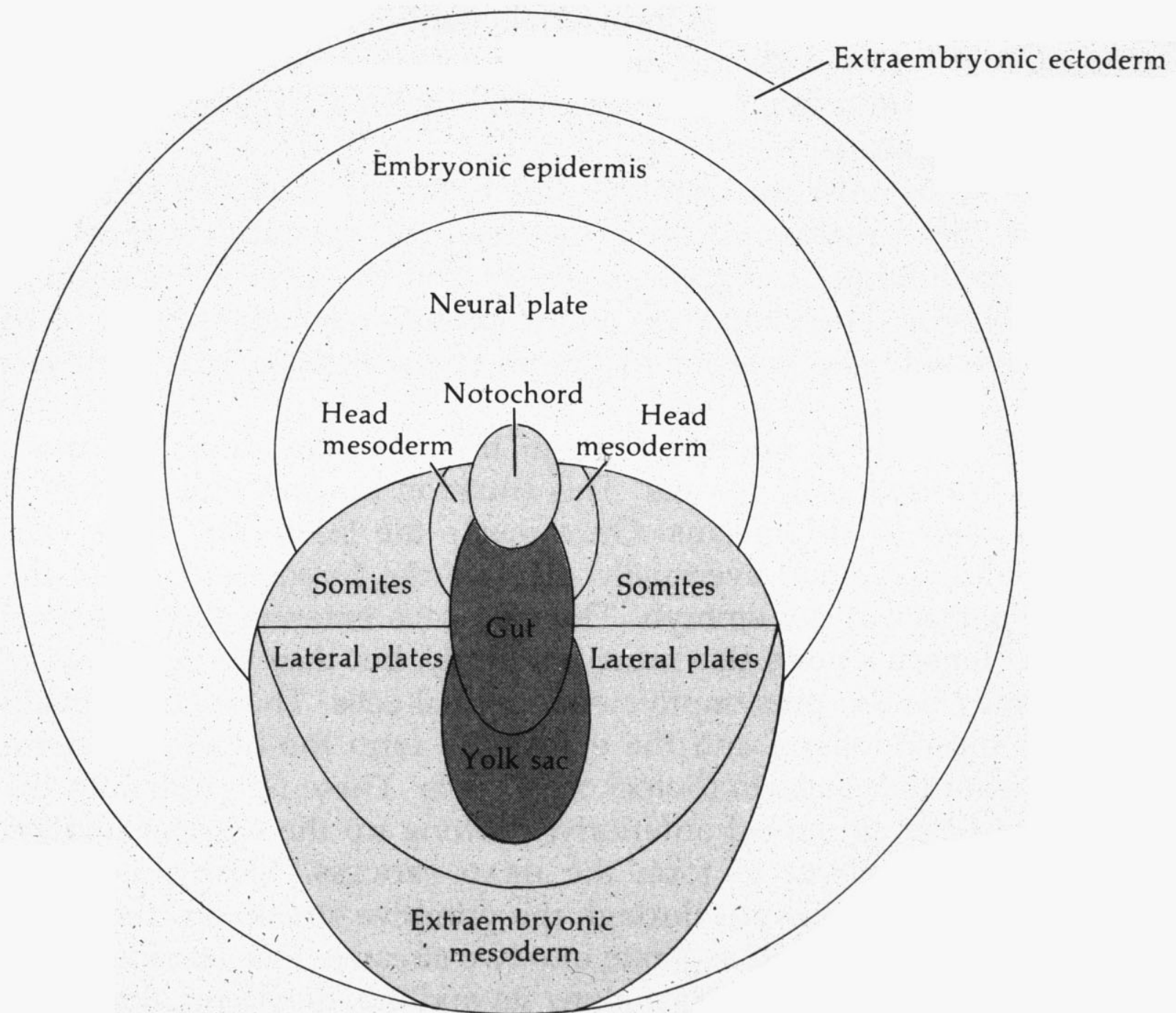
(A) TRANSVERSE SECTION



(B) MEDIAL SECTION



(C) THREE-DIMENSIONAL VIEW



Extraembryonic ectoderm

Embryonic epidermis

Neural plate

Notochord

Head mesoderm

Head mesoderm

Somites

Somites

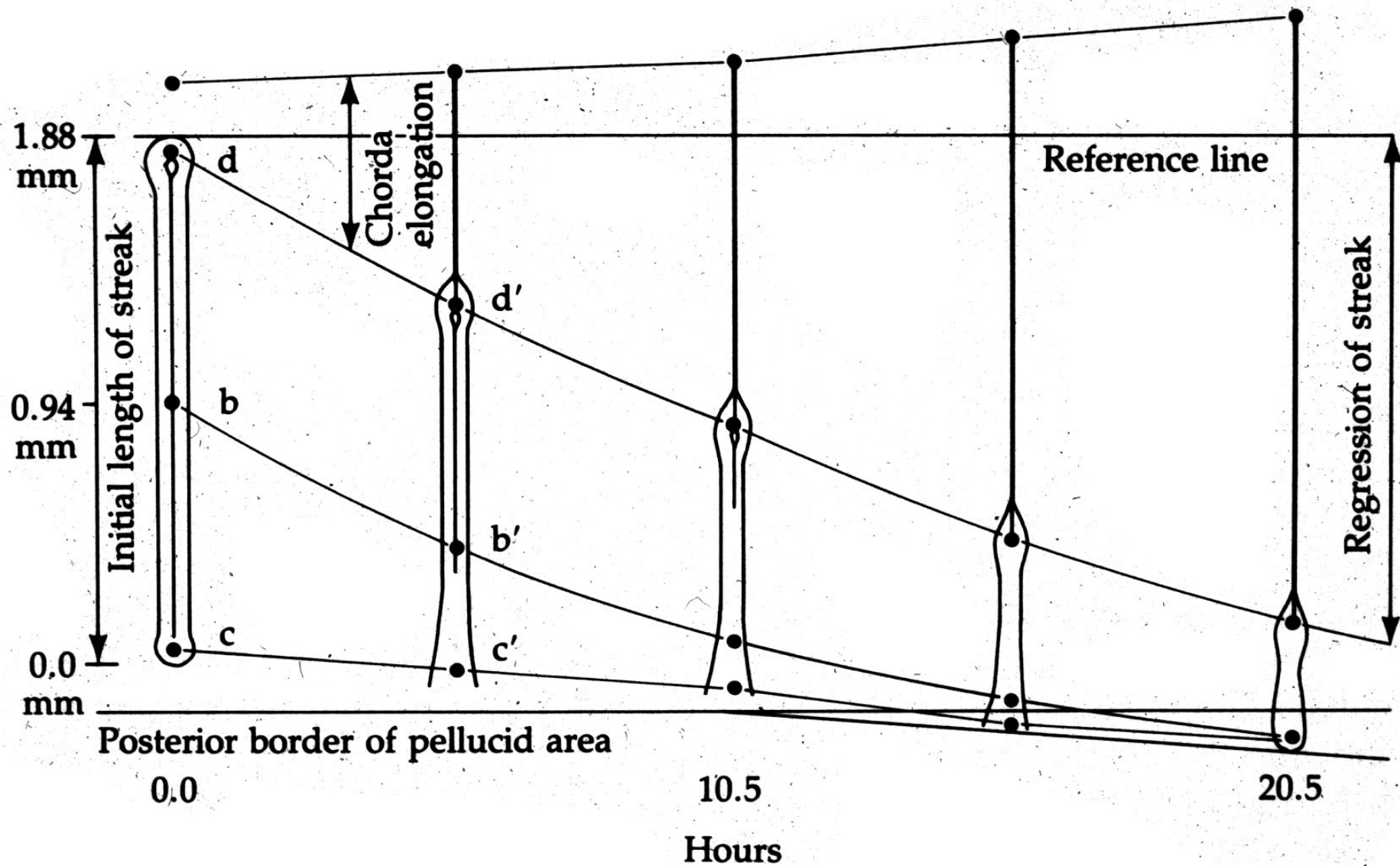
Gut

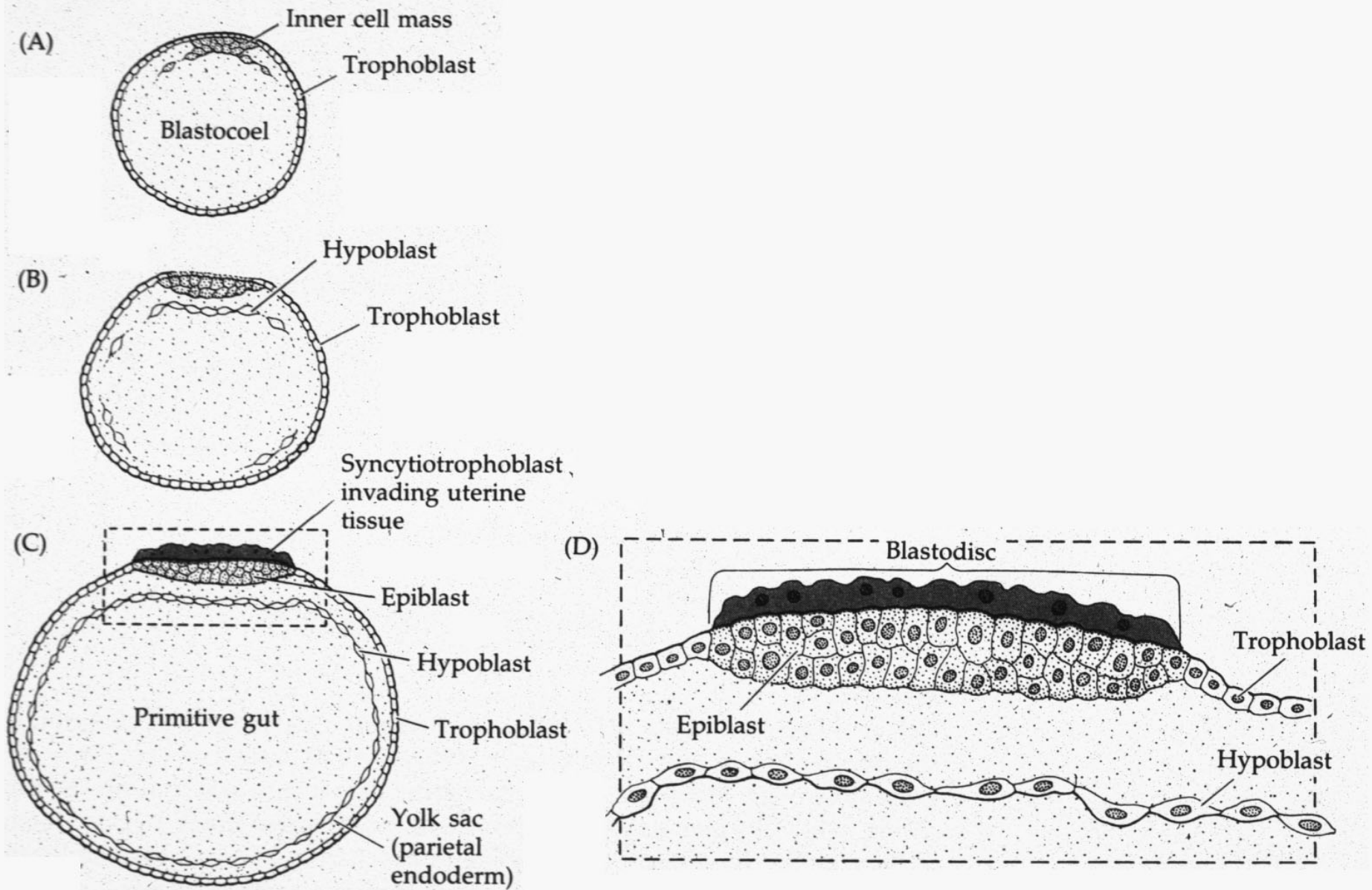
Lateral plates

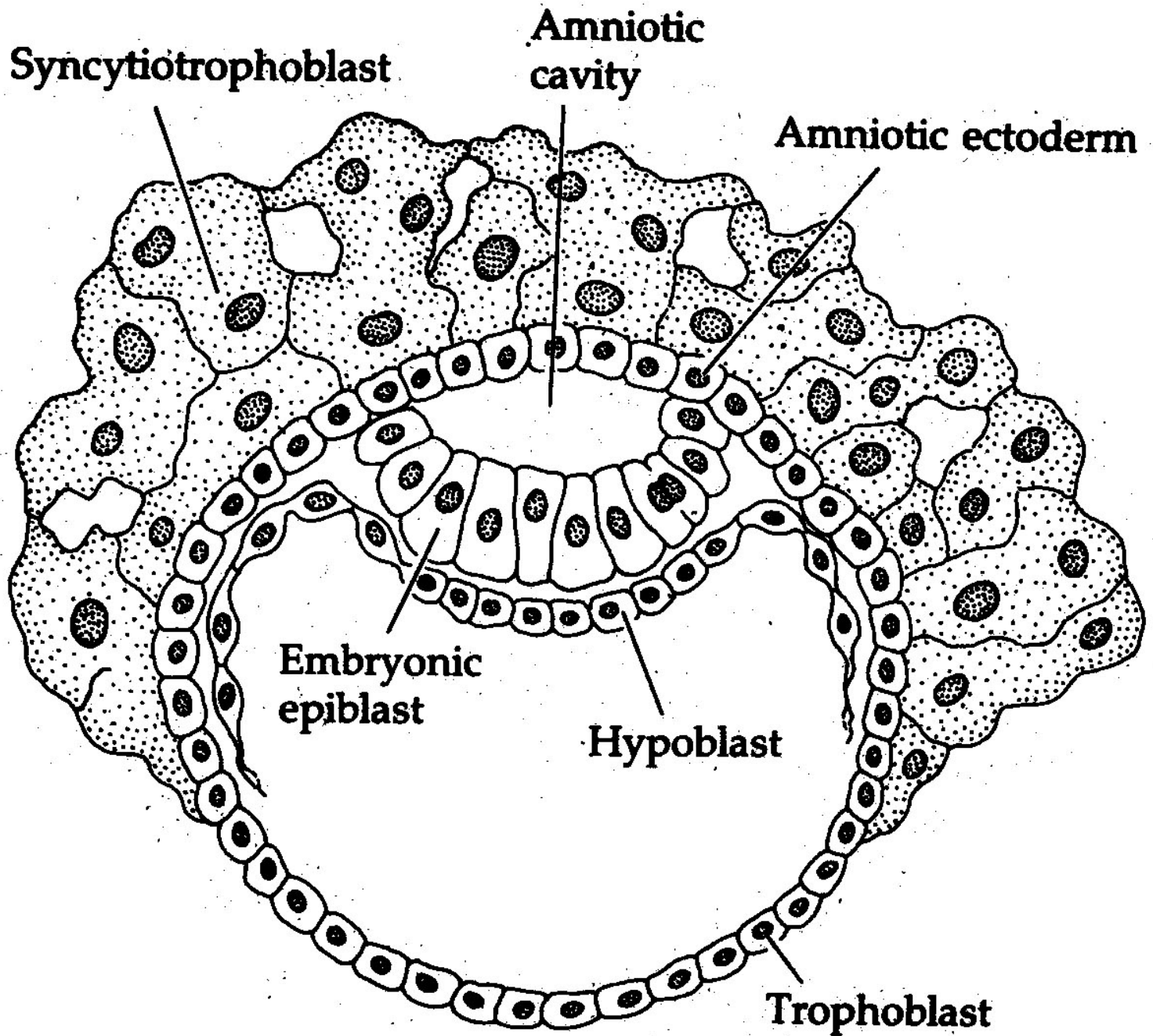
Lateral plates

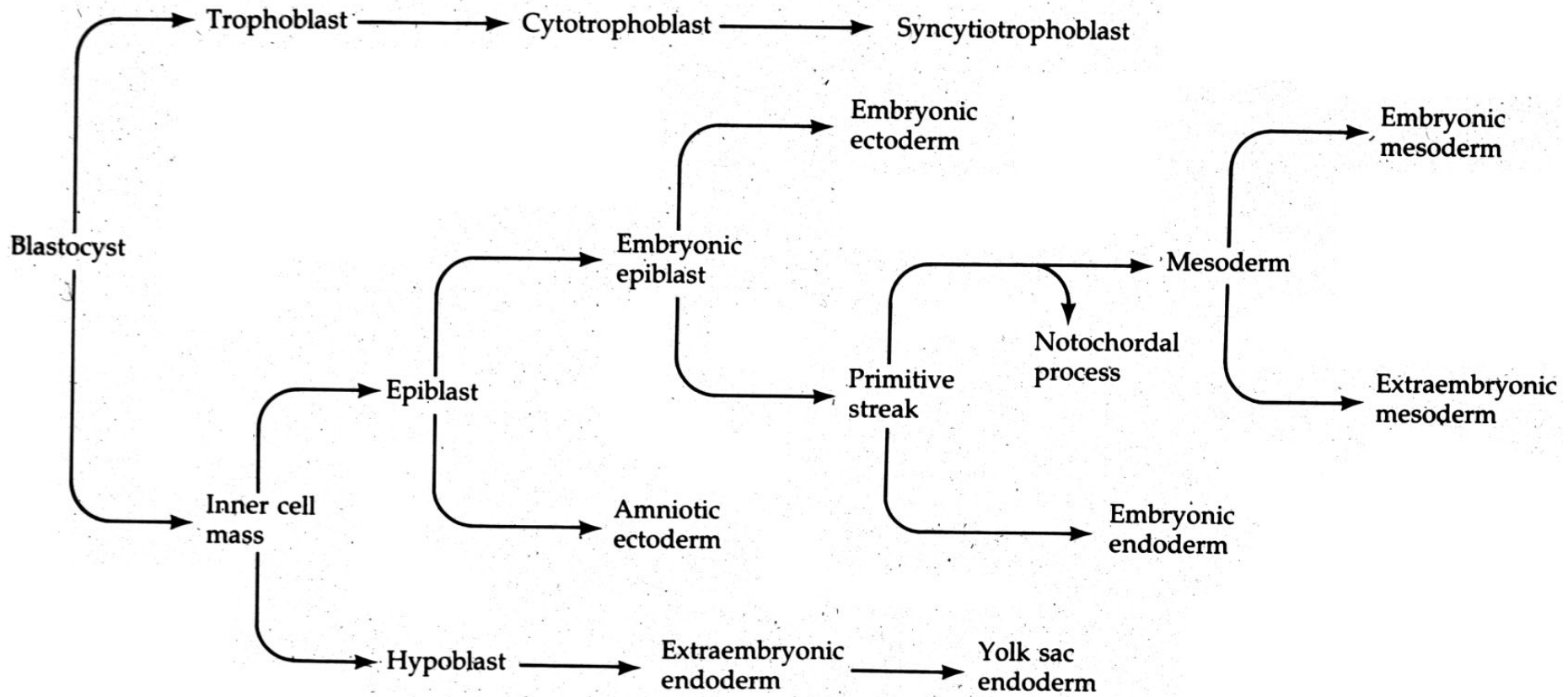
Yolk sac

Extraembryonic mesoderm

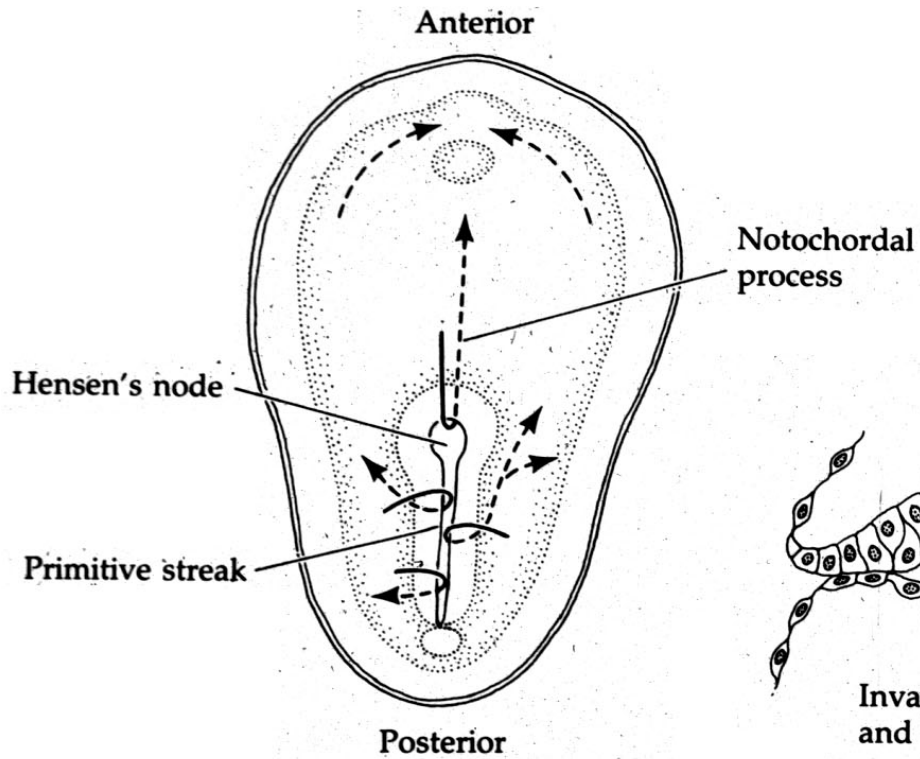




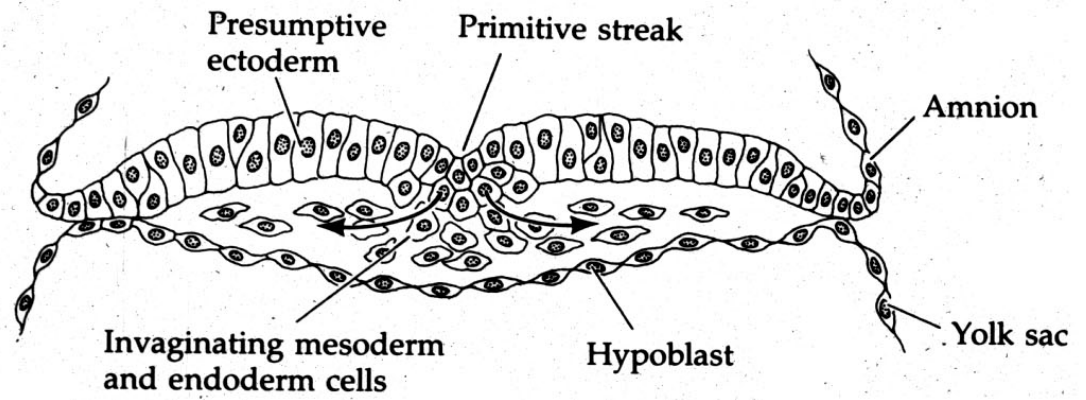








(A) SURFACE VIEW



(B) TRANSVERSE SECTION



