



TEXAS TECH UNIVERSITY  
Office of the Provost

## Office of Planning & Assessment

# Institutional Effectiveness Weekly Report

## February 1, 2019

---

*The Office of Planning and Assessment reports its weekly activities and contributions toward Texas Tech University's institutional effectiveness efforts and departmental objectives.*

---

### **OUTCOME 1: The Office of Planning and Assessment will contribute to Texas Tech University's ongoing compliance with all external accrediting agencies and State of Texas mandates.**

- ✦ Earlier this week, OPA responded to a data request from the Graduate School to provide numbers of graduate student publication from 2013 – 2018. OPA also directed Mr. Kenny Shatley to the Office of Institutional Research for another request related to internship and field experience enrollment numbers.
- ✦ OPA is currently in the final stages of reviewing all degree program assessment reports. As of February 1, OPA has completed evaluations for 66% of TTU degree program accounts. OPA has extended its internal deadline to February 8 to allow time to review degrees that submitted assessment data after the deadline.
- ✦ Substantive Change
  - OPA has made significant progress updating the Substantive Change report. An annual report for 2017-2018 will be available and sent to the Provost's Office within the next couple of months.
- ✦ Quality Enhancement Plan
  - Paul Pare, Director of the Quality Enhancement Plan, asked for OPA's expertise to develop a study abroad preparedness survey. Once the survey is developed, OPA will continue to work with Drs. Pare and Wong to assess the instrument's effectiveness.
- ✦ Communication Literacy mandates have been largely disseminated to the campus from the Office of the Provost. OPA is providing support through the management of an online format for submitting reports and assisting departments with aligning Communication Literacy through Nuventive Improve. OPA's role has largely been on hold while other activities were implemented. However, OPA will begin working with the Provost's Office to prepare for data gathering.
- ✦ Texas Higher Education Coordinating Board and State of Texas Reporting

- OPA continues to work with the Office of Institutional Research to enhance course-level data assessment. After revisions to the administration are approved by the Core Curriculum Steering Committee, OPA will finalize the method for assessment.

**OUTCOME 2: Texas Tech University faculty and staff will be well-prepared to meet OPA’s faculty credentialing, assessment, and strategic plan expectations.**

✦ Training and Consultation Tracking

- These totals include consultations and communications where OPA provides support for faculty and staff on non-project specific activity.

	Number of individuals	Number of issues addressed	Number of email sent on issue	Number of phone calls	Number of in informal consultations	Number of formal trainings
Week of January 21, 2019	29	31	41	6	3	3
Week of January 28, 2019	26	27	252	10	5	1
As of Sept 1, 2018	553	582	1011	144	49	18

- ✦ Jennifer Hughes held a meeting with Ms. Kathryn Nelson to discuss Landscape Architecture’s internship evaluation form. The form is currently in use with CASNR’s Qualtrics license. Feedback about the form was provided to Ms. Nelson during the meeting, and a follow-up email to Ms. Nelson and Chair Bernard was disseminated.
- ✦ All incoming departmental chairpersons for fall 2018 have held meetings with OPA staff. We are now working on preparing for routine Chair Consultations that will extend into summer 2019. A major part of these visits is to update presentation materials that reflect the most accurate information available. OPA is updating these materials by means of a thorough review of existing documentation.
- ✦ On Wednesday, January 30, Jennifer Hughes and Craig Morton met with Professor Kim Walker in the School of Music. Walker requested the names of degree program coordinators in Music, and she also asked that OPA work directly with Lisa Garner, Associate Director of Learning and Teaching and Professor of Flute. Walker also requested additional information about School of Music Raiders Engaged contributions. These requests were completed on 1/30/19.
- ✦ Developmental Opportunities
  - The Spring 2019 Newsletter was disseminated with the assistance of the Office of the Provost. The newsletter has an updated look with more detailed information than previous newsletters.

# Office of Planning and Assessment

Spring 2019 Newsletter



## OPA Assessment Spotlight Interview

OPA is pleased to recognize TTU faculty and staff who exhibit an exceptional commitment to academic assessment. Dr. Marcelo Schmidt, Director of Assessment in the College of Education, is someone who encourages excellence among the College of Education's diverse degree offerings. Dr. Schmidt works side-by-side with faculty to produce quality assessment reports that reflect a commitment to improving students' experiences within the College. [Click here](#) to read more about Marcello.

- The Assessment Liaison Group received their first e-meeting email on January 24. The new format for the group appears to be positively received with additional resources shared within the group. A copy of the email is available upon request.
- ✦ General Faculty Credentialing
  - OPA staff have been very busy working with faculty as they complete their Annual Reports. Because three new colleges were running reports from DigitalMeasures this year—Architecture, Agriculture, and Business—much assistance was needed. Raiders Engaged data and course evaluation data proved challenging to import because of varied issues. However, all were eventually managed successfully.
  - Library Dean, Bella Karr Gerlich, has indicated that she will implement the Library's annual faculty review using DigitalMeasures for 2019. Dean Gerlich provided materials to OPA staff to review. We will begin developing a template for the Dean's review.
  - OPA staff led three drop-in clinics at the Rawls College of Business for last-minute help with annual reports.
  - OPA staff held two general DigitalMeasures training sessions at the TLPDC. Attendance was good and the training seemed to be well-received and perceived as helpful.
  - TTU and Nuventive Vitae personnel continue weekly meetings. At present, Vitae is needing robust "dummy" data to import and begin testing reports.

- TxAHEA sub-committee for posters have met several times and prepared information and a rubric to be posted on the website for potential interested parties. The website went live on Feb. 1.
- DM Work Requests

Request #	Date Opened	Title	Status
124	7/23/2018	Annual Report set-up College of Business	1-31: Jason Rinaldo confirmed this issue is complete. Work request closed.
125	7/23/2018	Revision to "AACSB Table 15-1: Summary of Faculty Sufficiency and Qualifications (2013 Standards, v. 2017)"	1-31: Jason Rinaldo confirmed this issue is complete. Work request closed.
160	12/21/2018	AACSB Report	1-31: Jason Rinaldo confirmed this issue is complete. Work request closed.
161	12/21/2018	Data Copy Request: Samuel Prien	1-22: Complete and closed.
162	1/8/2019	Report logic needs adjusting	1-31: CM completed fix and report is running correctly. Request closed.
163	1/8/2019	Report Revision Request	1-18: DM made the additions. Request closed.
164	1/9/2019	Annual Faculty Report for College of Architecture	1-24: Additions for this report specific to ARCH are completed. Request closed.
165	1/9/2019	Raiders Engaged Import	1-25: DM completed the import and the request is closed. 1-14 to 1-23: Many issues came up with the data because of entries in RE data that are not included in DM dropdowns. OPA staff finally submitted a file that could be imported on 1-23.
166	1/11/2019	Course Eval Imports, Fall 2018	1-24: DM completed the imports. Request closed. 1-23: After intense work with DM developers and OPA staff, all the issues were figured out and dealt with. New course eval data was sent for import. 1-14 to 1-23: Many issues came up that didn't allow the import. These relate to the change TTU Registrar made in how summer courses are coded which caused the need for a Term Code and a CRN to be added to each course's information in DM so that each course is unique. 1-11-19: TTU's Institutional Research submitted fall course evaluation data to OPA. OPA staff prepared the data for import to DM and asked for a rush to complete the import.
167	1/17/2019	Data Copy Request: Jennifer Rojas-McWhinney	1-17-19: Prof. McWhinney moved to TTU from Missouri State where DM is also used. We requested her data to copy to her TTU account. Expected completion is 2-4.

168	1/18/2019	Update to Faculty Annual Report for College of Engineering	1-29: DM added the requested section. Request closed. 1-18-19: Chair Michel Giesselmann requested that Graduate and Undergraduate Student Support be added to the Teaching section of the ENGR report.
169	1/23/2019	remove access for Media and Comm Annual Report	1-23-19: The Media and Comm Annual Report is visible for all colleges. OPA staff requested that this be changed to avoid confusion.
170	1/28/2019	Data Copy Request: Sreedhar Madhavaram	1-28-19: Dr. Madhavaram came to TTU from Cleveland State and had a DM account there. This request will copy his data. Expected completion is 2-11.
171	1/30/2019	Updates to reports data parameters	1-30-19: OPA staff requested that several reports' data parameters be set to 2019. Expected completion is 2-13.
172	1/31/2019	Add University to Dropdown	1-31-19: A TTU faculty member asked that California State University Northridge be added to the Institution dropdown within the Education and Post Graduate Training screen. Expected completion is 2-14.
173	1/31/2019	Annual Faculty Report for College of Agriculture	1-31-19: With annual faculty reports being run by all CASNR faculty, changes are needed to customize the report to their discipline. This first change will add an Endowments and Gifts section to the Scholarship/Research section of the report. OPA staff asked DM for a rush on this since faculty reports were due last week.

✦ TxAHEA

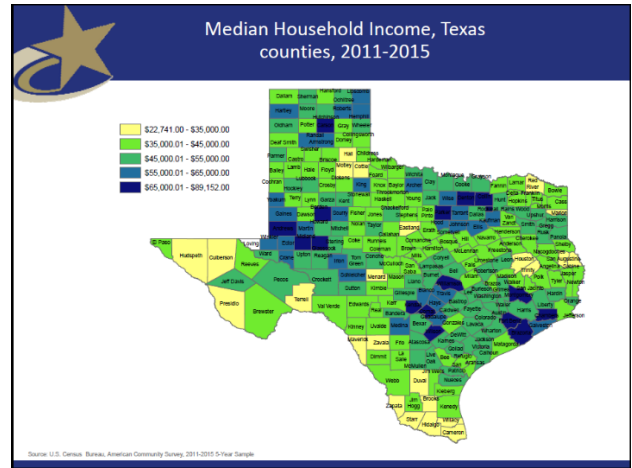
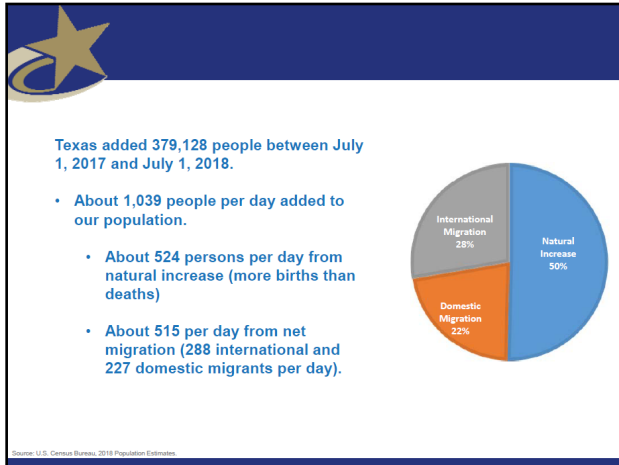
- OPA has been working diligently over the past month to finalize the TxAHEA website. OPA and the other partner institutions will begin marketing the conference today and will send out the call for proposals to various assessment listservs and institutions in Texas. The new conference webpage can be viewed at [www.txahea.org](http://www.txahea.org).



- ✦ Institutional Collaborative Assessment Updates
  - Raiders Engaged- OPA has finished cleaning Raider's Engaged data. The final report and all supplemental reports will be available before the end of the semester.
  - OPA is providing consultation to the Honors College and the Pi2 Program to evaluate survey data and to develop an online survey for future assessment. More information about this activity will be available in an upcoming report.
  - OPA has worked with Student Affairs to align student assessment schedules. Student Affairs administers NSSE and other instruments. This collaborative work between offices is strategic and helps develop a comprehensive approach to student research.
- ✦ OPA is still actively developing a series of dashboards. Currently, OPA is in the process of working with TechQuest and faculty credentialing data.
- ✦ OPA is working with the Office of Outreach and Engagement to facilitate a Metrics Taskforce to better define appropriate metrics for outreach and engagement and subsequently improve the data gathering processes associated with the metrics. The first meeting was January 28. An overview of the issue was addressed and an orientation to the process was presented. Members provided initial feedback which was used to improve the objectives of the group. Finally, a SWOT analysis survey was administered to the group which will be presented at the next meeting.

**OUTCOME 3: The Office of Planning and Assessment will continually monitor the university's compliance with laws, policy statements, and policies deriving from the State of Texas, THECB, and SACSCOC.**

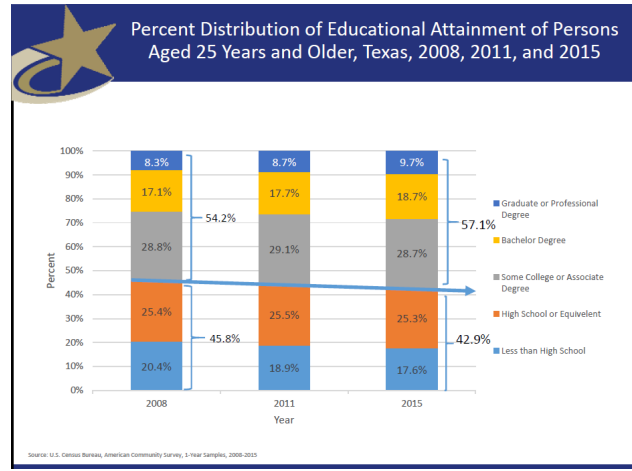
- ✦ THECB Updates



Top Counties for Numeric Growth in Texas, 2016-2017

County	U.S. Rank Population Change	Population Change	Percent Change		
			from Natural Increase	from Domestic Migration	from International Migration
Harris*	4	35,939	128.8%	-126.0%	97.2%
Tarrant	5	32,729	47.9%	29.0%	23.1%
Bexar	7	30,831	47.8%	33.4%	18.8%
Dallas	8	30,686	78.0%	-25.5%	47.6%
Denton	9	27,911	23.3%	67.0%	9.7%
Collin	10	27,150	24.4%	56.5%	19.0%
Fort Bend	14	22,870	29.4%	48.1%	22.6%
Travis	15	22,116	47.9%	22.1%	30.0%
Williamson	19	19,776	20.1%	73.5%	6.3%
Montgomery	28	16,412	22.7%	68.5%	8.8%
Hidalgo*	49	10,474	105.9%	-34.5%	28.5%

\* Hidalgo and Harris Counties had negative net migration (Harris: 10,322 and Hidalgo: 621).  
Source: U.S. Census Bureau, 2017 Vintage Population Estimates



✦ 60X30 - THECB: Update on the Board's Legislative Appropriations Request to the 86<sup>th</sup> Texas Legislature

## Highlights of THECB Appropriations HB 1 and SB 1 (Introduced)

### House Bill 1

- Overall, a \$36.6M or 2.5% increase
- Increase of \$60M for GME (maintains 1.1 to 1 ratio)
- Increase TEG by \$6.8M (serves 996 more students for a total of 26,200 students per year)
- Decreased Northeast Texas Initiative and TC3 by \$2.5M and transferred \$2.5M to Angelina College

### Senate Bill 1

- Overall, a \$133M or 9% increase
- Increase of \$60M for GME (maintains 1.1 to 1 ratio)
- Increase TEG by \$5.8M (serves 853 more students for a total of 26,057 students per year)
- Zero-funded \$5M for Northeast Texas Initiative and TC3
- \$100M for Texas Mental Health Care Consortium, contingent on passage of SB 63 by Nelson

60x30TX

2

## Highlights of THECB Appropriations HB 1 and SB 1 (Introduced)

### HB 1 and SB 1

- No increase for TEXAS Grants (\$786.5M)
- Decrease for Baylor College of Medicine (BCOM) Undergraduate Medical Education by \$3.7M
- Increase for BCOM Graduate Medical Education by \$1.4M
- Decrease BOT to cover renewal students (no impact)
- Zero-funded Top 10% (there are no more renewal students; no impact)
- Decrease for Information Resources by \$139K (DCS costs declined; no impact)
- Decrease in Federal Funds by \$5.5M, primarily due to the discontinuation of Teacher Quality Grant Program
- Decrease in Other Funds by \$18.4M, primarily due to aligning funding levels with projected distributions from certain tobacco funds

60x30TX

3

In addition to direct contributions toward the departmental goals, OPA continues to focus on continuous improvement measures.



- ✦ OPA is in the process of upgrading Nuventive Improve to the newest version, Nuventive Improve 5.7. A call is scheduled for 9am Monday February 4<sup>th</sup> to discuss the upgrade.