

Commodity Economics Division
Economic Research Serv., USDA
301 West Congress
Tucson, Arizona 85701

COTTON QUALITY

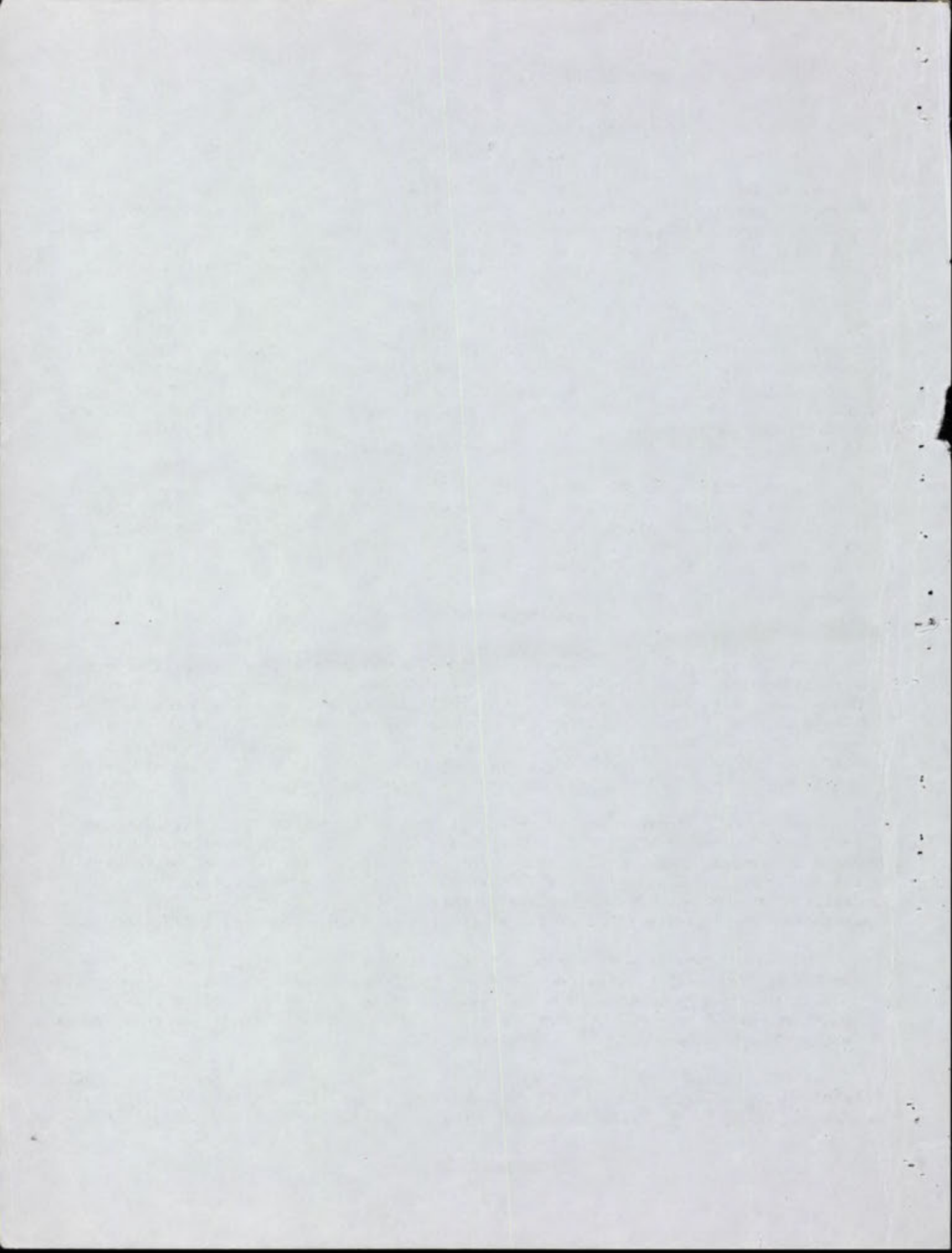
CROP OF 1963



UNITED STATES DEPARTMENT OF AGRICULTURE
Agricultural Marketing Service Cotton Division
Memphis, Tennessee

Vol. 37, No. 10

July 1964



Cotton Quality - United States

1963 Crop

Introduction

The quality of cotton ginned in the United States from the 1963 crop is presented in this report. These quality estimates are based on the classification of samples representing approximately ten percent of the 1963 cotton crop. The sample distribution of the various qualities was raised to total ginnings as reported by the Bureau of the Census for upland and American-Egyptian cotton.

Quality statistics on the 1963 crop for the major producing states are presented in three groups of tables in this report. The first group of tables contains cross-class data on the grade and staple of upland cotton ginned by states from the 1963 crop. The second group of tables contains grade and staple estimates of state ginnings by specified reporting periods. Grade and staple estimates of upland cotton ginned by state districts are presented in the third group of tables. An estimated distribution of the 1963 upland crop by micronaire readings by states is presented for the first time in this annual report.

A report covering the qualities of cotton on hand August 1, 1964 by principal types of storage will be released as soon as possible after August 1. In addition to quality estimates of cotton in the carry-over, this report will include quality data on the crop, supply and disappearance of upland cotton for the 1963-64 season with comparative data for preceding years.

The 1963 crop of upland cotton contained a slightly larger proportion of Middling and higher White grades than did the 1962 crop. Although the proportion of White grades below Middling was just slightly larger than in the previous season, 1963 ginnings of these qualities were proportionately the largest since the 1955 crop. Light Spotted cotton comprised one-fourth of this season's ginnings, a slightly smaller proportion than a year earlier. The 1963 grade index was 94.6 (Middling White equals 100) against the 1962 index of 93.9.

The average length of upland cotton in the 1963 crop was 32.7 thirty-seconds inches, the shortest since 1957. Cotton stapling 1" and shorter accounted for the smallest proportion of total ginnings for any season on record. The proportion of the 1963 crop in the lengths 1-1/32" and 1-1/16" increased moderately from a year earlier and accounted for 60 percent of total ginnings. There was a rather sharp decrease from a year earlier in the proportion of cotton stapling 1-3/32" and longer.

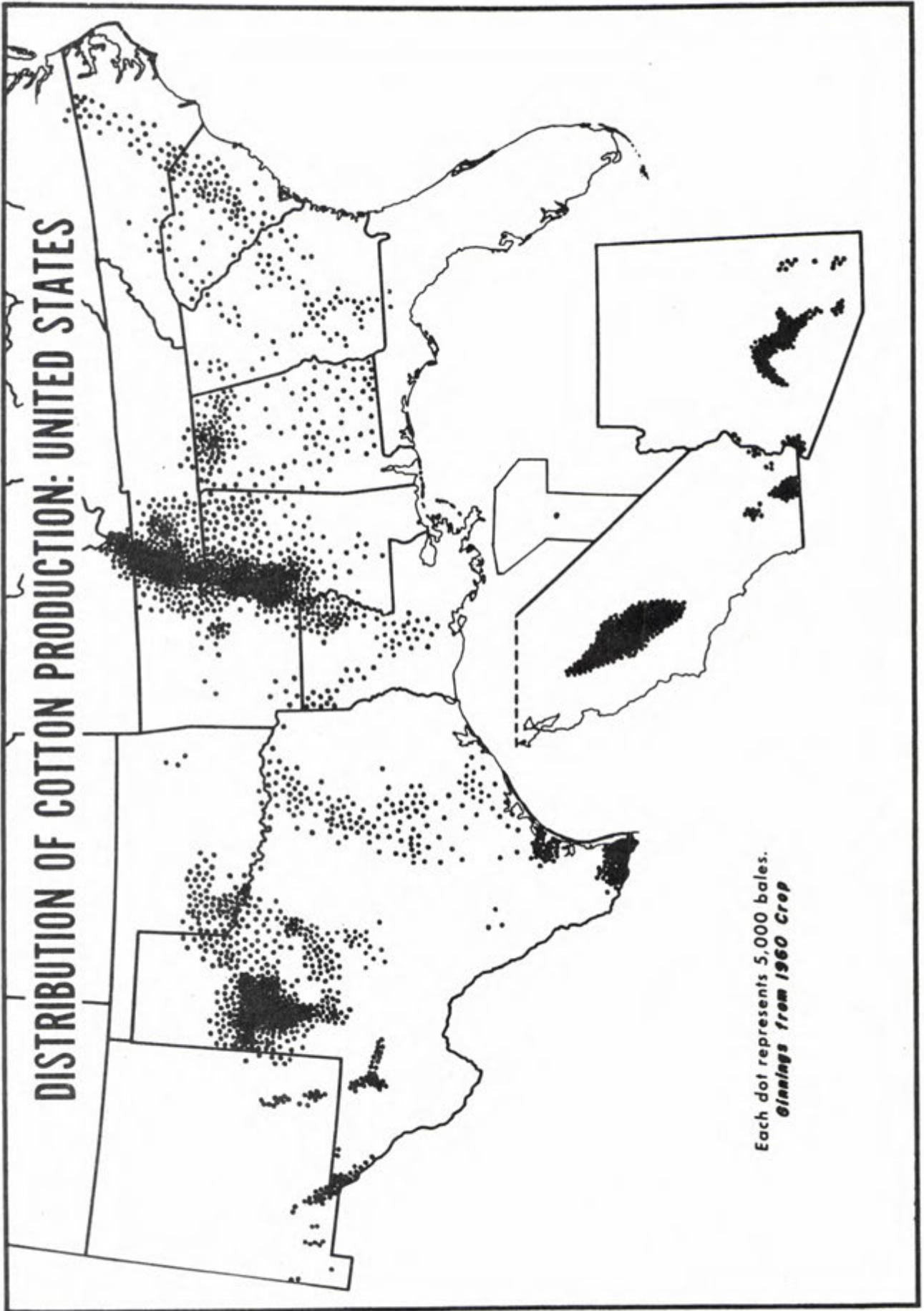
American-Egyptian cotton ginned from the 1963 crop averaged lower in grade and shorter in staple than a year earlier. About 55 percent of the 1963 crop was Grade 3 and higher against 60 percent in the previous season. Cotton stapling 1-7/16" and longer accounted for only two percent of this season's crop compared with 27 percent during the 1962 season and 49 percent in 1961.

Cotton ginned from the 1963 crop totaled 15,283,000 bales, according to the Bureau of the Census. This is the largest crop since 1953 and compares with last season's ginnings of 14,864,000 bales and the 1957-61 average of 13,084,000 bales.

CONTENTS

Table No.		Page No.
	Distribution of Cotton Production: United States	3
United States tables:		
1	Grade and staple of upland cotton ginned in the United States, 1963-64	4
2	Grade and staple of upland cotton ginned in the United States, during specified periods, 1963-64	5
3	Grade and staple of American-Egyptian cotton ginned, by States and United States, 1963-64.	6
4	Grade and staple of American-Egyptian cotton ginned in the United States, during specified periods, 1963-64.	7
5	Grade index and average staple of upland cotton ginned in the United States, by States, crops of 1960-63	8
6	Percentage distribution of micronaire readings of upland cotton ginned in the United States, by individual readings, and by States, 1963-64	9
7	Preparation, grade reduction, and wasty upland cotton ginned in the United States, by States, 1963-64.	10
8	Grade reductions, by specified causes, of upland cotton ginned in the United States, by States, 1963-64	11
9	Tenderability of upland cotton ginned by States, 1963-64	12
10	Tenderability of upland cotton ginned in the United States, 1947-1963.	12
State tables, 1963-64 upland crop:		
11	Grade and staple of upland cotton ginned in Alabama	13
12	Grade and staple of upland cotton ginned in Arizona	14
13	Grade and staple of upland cotton ginned in Arkansas	15
14	Grade and staple of upland cotton ginned in California	16
15	Grade and staple of upland cotton ginned in Florida	17
16	Grade and staple of upland cotton ginned in Georgia	18
17	Grade and staple of upland cotton ginned in Illinois	19
18	Grade and staple of upland cotton ginned in Kentucky	20
19	Grade and staple of upland cotton ginned in Louisiana	21
20	Grade and staple of upland cotton ginned in Mississippi	22
21	Grade and staple of upland cotton ginned in Missouri	23
22	Grade and staple of upland cotton ginned in Nevada	24
23	Grade and staple of upland cotton ginned in New Mexico	25
24	Grade and staple of upland cotton ginned in North Carolina	26
25	Grade and staple of upland cotton ginned in Oklahoma	27
26	Grade and staple of upland cotton ginned in South Carolina	28
27	Grade and staple of upland cotton ginned in Tennessee.	29
28	Grade and staple of upland cotton ginned in Texas.	30
29	Grade and staple of upland cotton ginned in Virginia	31
30	Grade and staple of upland cotton ginned, during specified periods, in Alabama and Arizona	32
31	Grade and staple of upland cotton ginned, during specified periods, in Arkansas and California	33
32	Grade and staple of upland cotton ginned, during specified periods, in Florida and Georgia	34
33	Grade and staple of upland cotton ginned, during specified periods, in Illinois and Kentucky	35
34	Grade and staple of upland cotton ginned, during specified periods, in Louisiana and Mississippi	36
35	Grade and staple of upland cotton ginned, during specified periods, in Missouri and Nevada	37
36	Grade and staple of upland cotton ginned, during specified periods, in New Mexico and North Carolina	38
37	Grade and staple of upland cotton ginned, during specified periods, in Oklahoma and South Carolina	39
38	Grade and staple of upland cotton ginned, during specified periods, in Tennessee and Texas	40
39	Grade and staple of upland cotton ginned, during specified periods, in Virginia.	41
40	Grade and staple of upland cotton ginned, by districts, in Alabama and Arizona	42
41	Grade and staple of upland cotton ginned, by districts, in Arkansas and California	44
42	Grade and staple of upland cotton ginned, by districts, in Georgia and Louisiana	46
43	Grade and staple of upland cotton ginned, by districts, in Mississippi and New Mexico.	48
44	Grade and staple of upland cotton ginned, by districts, in North Carolina and Oklahoma	50
45	Grade and staple of upland cotton ginned, by districts, in South Carolina and Tennessee.	52
46	Grade and staple of upland cotton ginned, by districts, in Texas	54

DISTRIBUTION OF COTTON PRODUCTION: UNITED STATES



Each dot represents 5,000 bales.
Ginnings from 1960 Crop

Table 2. -- Grade and staple of upland cotton ginned in the United States, during specified periods, 1963-64

Grade and staple	Prior to Sept. 1	September	October	November	After Nov. 30	Total Crop	Prior to Sept. 1	September	October	November	After Nov. 30	Total Crop
	Bales	Bales	Bales	Bales	Bales	Bales	Percent	Percent	Percent	Percent	Percent	Percent
White:												
G.M.	675	1,928	4,280	616	74	7,573	0.1	0.1	0.1	*	*	0.1
S.M.	112,685	366,557	389,791	37,652	4,890	913,575	8.5	10.6	7.4	1.4	0.2	6.0
M+.	3,789	19,620	17,746	2,055	522	43,732	.3	.6	.3	.1	*	.3
M.	364,505	1,164,467	1,583,192	494,530	127,674	3,734,368	27.5	33.5	30.2	18.3	5.3	24.7
S.L.M+.	12,040	70,241	122,505	39,342	12,108	256,236	.9	2.0	2.3	1.5	.5	1.7
S.L.M.	213,379	763,077	1,614,903	1,008,782	522,783	4,202,924	16.1	22.1	30.9	40.5	21.9	27.8
L.M+.	13,647	90,690	140,027	81,039	39,603	365,006	1.0	2.6	2.7	3.0	1.6	2.4
L.M.	51,664	213,149	343,722	212,772	192,695	1,014,002	3.9	6.2	6.6	7.9	8.0	6.7
S.G.O+.	829	4,823	9,347	7,639	4,140	26,778	.1	.1	.2	.3	.2	.2
S.G.O.	6,186	24,671	50,862	35,940	73,535	191,194	.5	.7	1.0	1.3	3.1	1.3
G.O+.	34	128	288	453	345	1,248	*	*	*	*	*	*
G.O.	1,191	2,519	5,843	6,599	23,099	39,251	.1	.1	.1	.2	1.0	.3
Total	780,624	2,721,870	4,282,506	2,007,419	1,001,468	10,793,687	59.0	78.6	81.8	74.5	41.8	71.5
Light Spotted:												
G.M.	43	74	59	47	11	234	*	*	*	*	*	*
S.M.	57,110	57,430	76,036	24,392	5,398	220,366	4.3	1.7	1.5	.9	.2	1.5
M.	324,627	366,046	513,760	349,792	414,363	1,988,588	24.5	11.2	9.8	13.0	17.2	13.2
S.L.M.	114,723	210,320	247,720	201,378	507,592	1,281,733	8.7	6.1	4.7	7.5	21.2	8.5
L.M.	23,141	48,758	50,479	43,566	128,308	294,252	1.7	1.4	1.0	1.6	5.3	1.9
Total	519,644	702,628	888,054	619,175	1,055,672	3,785,173	39.2	20.4	17.0	23.0	43.9	25.1
Spotted:												
G.M.	12	-	9	-	11	32	*	-	*	-	*	*
S.M.	782	1,027	1,152	820	733	4,514	.1	*	*	*	*	*
M.	3,877	9,198	11,223	11,461	60,401	96,160	.3	.3	.2	.4	2.5	.6
S.L.M.	3,052	7,289	9,265	10,630	89,934	120,170	.2	.2	.2	.4	3.7	.8
L.M.	1,598	2,756	3,651	4,019	23,193	35,217	.1	.1	.1	.1	1.0	.2
Total	9,321	20,270	25,300	26,930	174,272	256,093	.7	.6	.5	.9	7.2	1.6
Tinged:												
G.M.	-	9	-	-	9	18	-	*	-	-	*	*
S.M.	23	20	31	36	151	261	*	*	*	*	*	*
M.	-	20	29	139	4,355	4,543	-	*	*	*	.2	*
S.L.M.	64	10	70	251	7,686	8,081	*	*	*	*	.3	.1
L.M.	12	20	47	147	2,269	2,495	*	*	*	*	.1	*
Total	99	79	177	573	14,470	15,398	*	*	*	*	.6	.1
Yellow Stained:												
G.M.	-	-	-	-	-	-	-	-	-	-	-	-
S.M.	10	-	-	-	12	22	*	-	-	-	*	*
M.	-	10	-	8	106	124	-	*	-	-	*	*
Total	10	10	-	8	118	146	*	*	-	*	*	*
Light Gray:												
G.M.	30	11	98	21	51	211	*	*	*	*	*	*
S.M.	3,876	2,724	10,425	8,715	17,398	43,138	.3	.1	.2	.3	.7	.3
M.	5,868	3,263	14,986	21,919	47,005	93,041	.4	.1	.3	.8	2.0	.6
S.L.M.	1,600	1,071	1,993	2,647	14,640	21,951	.1	*	*	.1	.6	.1
Total	11,374	7,069	27,502	33,302	79,094	158,341	.8	.2	.5	1.2	3.3	1.0
Gray:												
G.M.	-	-	-	-	-	-	-	-	-	-	-	-
S.M.	441	212	285	233	699	1,870	*	*	*	*	*	*
M.	1,208	361	813	952	2,907	6,241	.1	*	*	*	.1	*
S.L.M.	442	600	540	253	2,262	4,097	*	*	*	*	.1	*
Total	2,091	1,173	1,638	1,438	5,868	12,208	.1	*	*	*	.2	*
Below Grade. . .	2,635	5,259	8,927	10,434	73,282	100,537	.2	.2	.2	.4	3.0	.7
All grades . . .	1,325,798	3,458,358	5,234,104	2,699,279	2,404,244	15,121,783 1/2	100.0	100.0	100.0	100.0	100.0	100.0
Grade Index. . .	96.3	96.2	95.7	93.8	89.6	94.6	-	-	-	-	-	-
Staple (inches)												
13/16 & shorter.	2,361	5,253	6,684	854	2,343	17,495	0.2	0.2	0.1	*	0.1	0.1
7/8.	35,211	67,216	77,560	16,743	36,237	232,967	2.7	1.9	1.5	0.6	1.5	1.5
29/32.	99,125	152,249	223,847	207,871	503,165	1,186,257	7.5	4.4	4.3	7.7	20.9	7.8
15/16.	162,019	143,904	209,240	503,889	933,036	1,952,068	12.2	4.2	4.0	18.7	38.9	12.9
31/32.	96,354	49,131	87,718	107,219	143,879	484,301	7.3	1.4	1.7	4.0	6.0	3.2
1.	148,058	127,310	218,645	102,799	128,567	725,379	11.2	3.7	4.2	3.8	5.3	4.8
1-1/32.	423,865	860,274	1,355,085	951,930	282,250	3,473,404	31.8	24.9	25.9	20.4	11.7	23.0
1-1/16.	328,176	1,632,921	2,471,254	862,058	305,316	5,999,725	24.8	47.2	47.3	32.0	12.7	37.1
1-3/32.	29,017	370,779	389,569	263,034	46,948	1,099,347	2.2	10.7	7.4	9.7	2.0	7.3
1-1/8.	1,386	28,387	63,349	50,333	18,696	162,151	.1	.8	1.2	1.9	.8	1.1
1-5/32.	83	19,287	117,762	30,191	2,806	170,129	*	.6	2.2	1.1	.1	1.1
1-3/16.	70	1,425	11,785	1,603	668	15,531	*	*	.2	.1	*	.1
1-7/32.	73	60	757	158	50	1,098	*	*	*	*	*	*
1-1/4 & longer.	-	162	849	597	283	1,891	-	*	*	*	*	*
All staples. . .	1,325,798	3,458,358	5,234,104	2,699,279	2,404,244	15,121,783 1/2	100.0	100.0	100.0	100.0	100.0	100.0
Average staple (32nd inches)	32.2	33.3	33.3	32.6	30.9	32.7	-	-	-	-	-	-

1/ As reported by the Bureau of the Census, running bales.

* Less than 0.05 percent.

Table 3. -- Grade and staple of American-Egyptian cotton ginned, by States and United States, 1963-64

Grade	Production							Percentages						
	1-1/4 inches and shorter	1-5/16 inches	1-3/8 inches	1-7/16 inches	1-1/2 inches	1-9/16 inches and longer	All staples	1-1/4 inches and shorter	1-5/16 inches	1-3/8 inches	1-7/16 inches	1-1/2 inches	1-9/16 inches and longer	All staples
	Bales	Bales	Bales	Bales	Bales	Bales	Bales	Percent	Percent	Percent	Percent	Percent	Percent	Percent
<u>ARIZONA</u>														
1	-	10	803	10	-	-	823	-	0.1	1.2	3.2	-	-	1.1
2	-	137	8,260	102	-	-	8,499	-	1.4	12.6	32.3	-	-	10.9
3	-	730	35,813	136	-	-	36,679	-	7.5	54.5	43.0	-	-	47.2
4	10	1,192	14,759	40	-	-	16,001	0.5	12.2	22.5	12.7	-	-	20.6
5	20	1,559	4,355	19	-	-	5,953	1.0	15.9	6.6	6.0	-	-	7.7
6	80	2,339	1,140	-	-	-	3,559	4.2	23.9	1.7	-	-	-	4.6
7	333	2,509	380	-	-	-	3,222	17.4	25.6	.6	-	-	-	4.1
8	384	909	116	-	-	-	1,409	20.1	9.3	.2	-	-	-	1.8
9	402	195	30	9	-	-	636	21.0	2.0	*	2.8	-	-	.8
10	682	210	38	-	-	-	930	35.8	2.1	.1	-	-	-	1.2
All grades	1,911	9,790	65,694	316	-	-	77,711 ^{1/}	100.0	100.0	100.0	100.0	-	-	100.0
<u>CALIFORNIA</u>														
1	-	-	-	-	-	-	-	-	-	-	-	-	-	-
2	-	-	5	-	-	-	5	-	-	0.4	-	-	-	0.4
3	-	-	76	5	-	-	81	-	-	6.5	50.0	-	-	6.1
4	-	-	251	5	-	-	256	-	-	21.5	50.0	-	-	19.2
5	-	-	394	-	-	-	394	-	-	33.8	-	-	-	29.5
6	-	33	352	-	-	-	385	-	21.2	30.1	-	-	-	28.9
7	-	29	90	-	-	-	119	-	18.6	7.7	-	-	-	8.9
8	-	73	-	-	-	-	73	-	46.8	-	-	-	-	5.5
9	-	18	-	-	-	-	18	-	11.5	-	-	-	-	1.3
10	-	3	-	-	-	-	3	-	1.9	-	-	-	-	.2
All grades	-	156	1,168	10	-	-	1,334 ^{1/}	-	100.0	100.0	100.0	-	-	100.0
<u>NEW MEXICO</u>														
1	-	21	38	-	-	-	59	-	2.1	0.2	-	-	-	0.3
2	-	87	2,513	20	-	-	2,620	-	8.8	14.0	4.1	-	-	13.5
3	-	256	10,507	247	-	-	11,010	-	25.9	58.6	50.9	-	-	56.8
4	-	161	3,800	155	-	-	4,116	-	16.2	21.2	32.0	-	-	21.2
5	-	37	887	52	-	-	976	-	3.7	4.9	10.7	-	-	5.0
6	-	199	91	11	-	-	301	-	20.0	.5	2.3	-	-	1.5
7	8	177	92	-	-	-	277	100.0	17.8	.5	-	-	-	1.4
8	-	47	19	-	-	-	66	-	4.7	.1	-	-	-	.3
9	-	8	-	-	-	-	8	-	.8	-	-	-	-	*
10	-	-	-	-	-	-	-	-	-	-	-	-	-	-
All grades	8	993	17,947	485	-	-	19,433 ^{1/}	100.0	100.0	100.0	100.0	-	-	100.0
<u>TEXAS</u>														
1	-	-	126	12	-	-	138	-	-	0.2	0.5	-	-	0.2
2	-	71	3,738	256	-	-	4,065	-	2.1	6.9	10.3	-	-	6.5
3	-	282	24,040	1,144	18	-	25,484	-	8.5	44.3	45.7	66.7	-	40.6
4	7	265	18,777	794	-	-	19,843	0.3	8.0	34.6	31.8	-	-	31.6
5	51	249	5,846	229	-	-	6,375	1.9	7.5	10.8	9.2	-	-	10.2
6	539	644	1,032	62	9	-	2,286	20.3	19.4	1.9	2.5	33.3	-	3.6
7	895	733	484	-	-	-	2,112	33.8	22.1	.9	-	-	-	3.4
8	734	475	150	-	-	-	1,359	27.7	14.3	.3	-	-	-	2.2
9	358	367	38	-	-	-	763	13.5	11.1	.1	-	-	-	1.2
10	66	233	9	-	-	-	308	2.5	7.0	*	-	-	-	.5
All grades	2,650	3,319	54,240	2,497	27	-	62,733 ^{1/}	100.0	100.0	100.0	100.0	100.0	-	100.0
<u>UNITED STATES</u>														
1	-	31	967	22	-	-	1,020	-	0.2	0.7	0.7	-	-	0.6
2	-	295	14,516	378	-	-	15,189	-	2.1	10.4	11.4	-	-	9.4
3	-	1,268	70,436	1,532	18	-	73,254	-	8.9	50.7	46.3	66.7	-	45.4
4	17	1,618	37,587	994	-	-	40,216	0.4	11.3	27.0	30.0	-	-	24.9
5	71	1,845	11,482	300	-	-	13,698	1.6	12.9	8.3	9.1	-	-	8.5
6	619	3,215	2,615	73	9	-	6,531	13.5	22.5	1.9	2.2	33.3	-	4.1
7	1,236	3,448	1,046	-	-	-	5,730	27.0	24.4	.8	-	-	-	3.6
8	1,118	1,504	285	-	-	-	2,907	24.5	10.5	.2	-	-	-	1.8
9	760	588	68	9	-	-	1,425	16.6	4.1	*	.3	-	-	.9
10	748	446	47	-	-	-	1,241	16.4	3.1	*	-	-	-	.8
All grades	4,569	14,258	139,049	3,308	27	-	161,211 ^{1/}	100.0	100.0	100.0	100.0	100.0	-	100.0

^{1/} As reported by the Bureau of the Census, running bales.

* Less than 0.05 percent.

Table 4. -- Grade and staple of American-Egyptian cotton ginned in the United States, during specified periods, 1963-64

Grade and staple	Ginnings					
	Prior to Sept. 1	September	October	November	After Nov. 30	Total Crop
<u>Grade</u>	<u>Bales</u>	<u>Bales</u>	<u>Bales</u>	<u>Bales</u>	<u>Bales</u>	<u>Bales</u>
1	-	78	391	280	271	1,020
2	-	287	3,509	7,619	3,774	15,189
3	13	502	16,453	35,673	20,613	73,254
4	-	603	9,847	16,635	13,131	40,216
5	-	386	3,391	3,832	6,089	13,698
6	-	79	966	732	4,754	6,531
7	-	49	320	365	4,996	5,730
8	12	39	37	220	2,599	2,907
9	-	-	18	47	1,360	1,425
10	-	58	18	59	1,106	1,241
All grades	25	2,081	34,950	65,462	58,693	161,211 ^{1/}
<u>Staple</u> (inches)						
1-1/4 and shorter. . .	-	10	9	-	4,550	4,569
1-5/16	-	268	1,338	1,168	11,484	14,258
1-3/8	25	1,684	31,814	62,936	42,590	139,049
1-7/16	-	119	1,762	1,358	69	3,308
1-1/2	-	-	27	-	-	27
1-9/16 and longer. . .	-	-	-	-	-	-
All staples	25	2,081	34,950	65,462	58,693	161,211 ^{1/}
<u>Grade</u>	<u>Percent</u>	<u>Percent</u>	<u>Percent</u>	<u>Percent</u>	<u>Percent</u>	<u>Percent</u>
1	-	3.7	1.1	0.4	0.5	0.6
2	-	13.8	10.0	11.6	6.4	9.4
3	52.0	24.1	47.0	54.5	35.1	45.4
4	-	29.0	28.2	25.4	22.4	24.9
5	-	18.5	9.7	5.9	10.4	8.5
6	-	3.8	2.8	1.1	8.1	4.1
7	-	2.4	.9	.6	8.5	3.6
8	48.0	1.9	.1	.3	4.4	1.8
9	-	-	.1	.1	2.3	.9
10	-	2.8	.1	.1	1.9	.8
All grades	100.0	100.0	100.0	100.0	100.0	100.0
<u>Staple</u> (inches)						
1-1/4 and shorter. . .	-	0.5	*	-	7.8	2.8
1-5/16	-	12.9	3.8	1.8	19.6	8.8
1-3/8	100.0	80.9	91.1	96.1	72.5	86.3
1-7/16	-	5.7	5.0	2.1	.1	2.1
1-1/2	-	-	.1	-	-	*
1-9/16 and longer. . .	-	-	-	-	-	-
All staples	100.0	100.0	100.0	100.0	100.0	100.0

^{1/} As reported by the Bureau of the Census, running bales.

* Less than 0.05 percent.

Table 5. -- Grade index and average staple of upland cotton ginned in the United States, by States, crops of 1960-1963

State	Grade index <u>1/</u>				Average staple <u>2/</u>			
	1960	1961	1962	1963	1960	1961	1962	1963
	<u>Index</u>	<u>Index</u>	<u>Index</u>	<u>Index</u>	<u>32d inches</u>	<u>32d inches</u>	<u>32d inches</u>	<u>32d inches</u>
Alabama	95.9	95.6	95.7	95.7	33.3	33.4	33.2	33.1
Arizona	97.3	97.1	92.9	92.4	34.0	33.7	33.6	33.3
Arkansas	94.2	94.8	91.7	94.8	33.7	34.1	33.8	33.8
California	97.2	98.3	96.2	92.8	34.1	34.1	34.5	34.1
Florida	92.0	88.5	91.0	92.2	32.9	32.5	32.9	32.8
Georgia	95.3	95.2	94.8	93.6	33.3	32.9	32.9	33.0
Illinois	94.3	83.8	93.0	91.8	33.7	33.3	33.9	33.8
Kentucky	95.4	91.5	92.4	95.1	33.7	33.6	33.6	33.7
Louisiana	95.0	94.8	95.3	95.2	33.5	33.8	33.7	33.7
Mississippi	94.8	95.5	96.2	96.8	33.5	34.0	33.9	33.9
Missouri	93.9	94.3	93.2	93.9	33.8	33.9	33.8	33.8
Nevada	99.7	98.2	97.1	96.6	35.7	36.7	36.9	36.4
New Mexico	99.9	99.3	95.9	96.7	35.7	35.2	35.0	35.4
North Carolina	94.8	96.8	93.8	94.2	33.5	33.7	33.5	33.3
Oklahoma	92.6	91.2	87.6	93.7	31.0	31.1	30.6	30.2
South Carolina	96.6	96.7	95.0	95.1	33.7	33.3	33.5	33.2
Tennessee	96.0	95.5	95.8	98.1	33.5	33.8	33.6	33.7
Texas	94.8	95.2	92.5	93.8	31.3	31.1	30.9	30.5
Virginia	92.3	94.1	94.8	94.2	34.0	34.1	33.7	33.2
United States	95.4	95.7	93.9	94.6	32.9	32.9	32.8	32.7

1/ Computed by weighting the quantity in each grade by the 1937-39 average price per pound for such grade of 15/16 inch staple. Converted to an index with Middling White equaling 100.

2/ Averages calculated on numerical equivalents of the staple designations (for example, 29/32"=29).

Table 6. -- Percentage distribution of micronaire readings of upland cotton ginned in the United States, by individual readings and by States, 1963-64

State	Readings																	Total														
	Pct.																															
	2.4 and below	2.5	2.6	2.7	2.8	2.9	3.0	3.1	3.2	3.3	3.4	3.5	3.6	3.7	3.8	3.9	4.0		4.1	4.2	4.3	4.4	4.5	4.6	4.7	4.8	4.9	5.0	5.1	5.2	5.3	5.4
Georgia	.5	.9	1.5	2.0	3.2	4.4	5.9	6.5	8.9	8.8	10.0	9.7	9.9	7.0	6.2	4.1	3.3	2.1	1.7	1.1	.8	.4	.2	.1	.1	.1	.1	.1	.1	.1	.1	100.0
Alabama	.3	.5	.7	1.3	1.9	2.9	3.9	6.0	7.5	9.5	11.0	13.6	11.3	10.8	7.7	5.1	2.5	1.7	.7	.5	.2	.2	.2	.2	.2	.2	.2	.2	.2	.2	.2	100.0
Florida	.7	.2	.6	.7	2.8	1.4	2.6	3.8	3.7	6.4	4.6	8.6	16.6	14.9	17.9	6.7	5.1	.9	.5	.5	.5	.5	.5	.5	.5	.5	.5	.5	.5	.5	.5	100.0
South Carolina	.5	.9	1.1	1.5	2.2	2.7	3.8	4.5	6.4	6.5	8.3	9.2	9.9	8.3	7.8	6.1	5.8	3.8	3.3	2.2	2.0	.9	.9	.4	.4	.4	.4	.4	.4	.4	.4	100.0
North Carolina	.5	.7	.7	1.1	1.4	2.0	2.9	3.7	4.2	5.9	5.7	8.2	7.7	8.5	7.2	7.3	6.2	5.4	4.1	4.3	3.4	2.9	1.9	1.6	.9	.9	.9	.9	.9	.9	.9	100.0
Virginia	.8	.9	1.0	.9	2.4	3.0	4.0	1.3	5.3	3.5	5.6	6.1	2.2	6.2	7.7	4.5	5.0	4.4	5.2	3.9	4.3	2.7	5.7	4.6	2.2	2.7	.9	2.8	.9	2.8	.9	100.0
Oklahoma	.4	.6	.8	.8	1.0	1.4	1.7	1.5	2.2	2.2	2.6	2.6	3.8	4.0	4.9	5.2	6.4	6.5	7.7	6.3	7.5	6.3	4.9	4.3	3.0	2.2	1.2	.7	.5	100.0		
Texas	.5	1.1	1.4	2.4	3.1	3.7	4.2	4.3	3.9	4.2	4.0	4.5	4.2	4.6	4.4	5.1	5.3	5.6	4.9	5.1	4.3	4.2	3.3	3.0	2.2	2.0	1.3	1.0	.6	.5	.7	100.0
Louisiana	.1	.1	.1	.1	.2	.3	.4	.5	.6	.8	.7	1.1	1.4	1.7	2.6	3.4	4.9	6.3	8.0	8.4	9.9	8.9	9.3	8.0	7.4	5.3	4.0	2.6	1.6	1.4	100.0	
Arkansas	.1	.2	.4	.4	.6	.7	1.1	1.4	2.2	3.0	4.3	4.8	6.8	7.3	9.1	8.5	8.9	7.4	7.4	6.1	5.8	4.0	3.8	2.3	1.7	.8	.5	.3	.3	.3	.3	100.0
Tennessee	.2	.3	.4	.6	.6	1.1	1.0	2.0	1.7	3.4	3.4	6.2	7.1	10.4	8.7	10.2	9.4	10.4	6.6	6.1	3.0	3.5	1.2	1.3	.5	.4	.1	.1	.1	.1	.1	100.0
Mississippi	.1	.2	.3	.3	.5	.4	1.0	.9	2.3	2.0	4.8	4.4	8.7	7.5	12.0	8.6	14.1	7.8	9.8	4.5	5.4	1.8	1.5	.5	.3	.1	.1	.1	.1	.1	.1	100.0
Missouri	.2	.4	.5	.9	1.5	1.5	2.0	2.2	3.4	3.1	4.8	4.1	6.5	6.2	8.3	6.8	6.6	7.4	4.8	5.7	3.2	3.5	2.1	1.8	.8	1.3	.7	.7	.7	.7	.7	100.0
Illinois	.2	.5	2.1	2.5	6.7	.5	2.6	.9	6.5	3.1	7.5	2.2	3.1	5.3	12.2	11.8	12.2	2.2	2.9	2.2	-	-	-	-	-	-	-	-	-	-	-	100.0
Kentucky	.3	.6	.3	2.7	.7	1.2	1.1	2.1	2.4	1.6	1.9	3.9	2.0	4.6	1.7	26.9	8.3	26.8	7.1	1.7	.5	.7	.3	-	.1	-	-	-	-	-	-	100.0
Arizona	.2	.4	.5	.7	.8	1.3	1.6	1.7	1.9	2.1	2.3	2.6	2.5	2.8	3.0	2.8	3.2	3.9	4.7	5.4	6.4	6.9	7.5	7.7	7.1	6.5	5.3	3.7	2.2	1.3	.8	100.0
California	.1	.2	.4	.6	.9	1.1	1.1	1.4	1.6	2.1	2.3	3.1	3.7	4.8	6.2	8.6	10.5	12.6	12.0	10.7	7.1	4.4	2.2	1.1	.4	.2	.1	.1	.1	.1	.1	100.0
New Mexico	1.5	2.6	3.2	4.4	4.1	4.5	4.9	5.3	4.8	5.8	5.1	6.4	6.1	7.6	6.2	6.8	5.7	5.9	3.4	2.0	1.1	.5	.1	.1	.1	.1	.1	.1	.1	.1	.1	100.0
Nevada	3.6	3.2	2.4	3.6	4.4	11.2	7.3	5.6	6.0	5.2	7.7	5.6	4.0	6.0	7.3	6.9	2.4	1.6	-	.8	.4	.4	-	-	-	-	-	-	-	-	-	100.0
United States	.2	.4	.5	.9	1.1	1.5	1.7	1.9	1.8	2.2	2.3	3.0	3.1	4.1	4.3	5.6	6.1	7.9	7.2	8.4	7.0	7.5	5.3	5.0	3.2	3.0	1.7	1.3	.7	.5	.4	100.0

* Less than 0.05 percent.

Table 7. -- Preparation, grade reduction, and wasty upland cotton ginned in the United States, by States, 1963-64

State	Preparation			Total Bales	Grade Reductions <u>1/</u> Bales	Wasty <u>2/</u> Bales
	Normal Bales	Rough Preparation				
		Prep. 3 and 4 Bales	Gin Cut Bales			
Alabama	871,434	2,791	-	874,225	52,233	-
Arizona	758,118	218	-	758,336	122,425	18,508
Arkansas	1,499,912	988	-	1,500,900	60,723	565
California	1,730,345	4,520	22	1,734,887	120,459	2,108
Florida	14,924	12	-	14,936	1,866	-
Georgia	602,293	2,077	-	604,370	64,841	19
Illinois	1,776	-	-	1,776	-	-
Kentucky	5,473	-	-	5,473	54	4
Louisiana	673,619	1,593	-	675,212	73,637	127
Mississippi	2,095,041	8,609	-	2,103,650	108,655	162
Missouri	459,984	449	-	460,433	9,807	354
Nevada	5,257	10	-	5,267	386	375
New Mexico	227,432	183	-	227,615	7,315	16,987
North Carolina	361,528	418	-	361,946	52,019	-
Oklahoma	323,450	1,139	-	324,589	12,947	4,787
South Carolina	463,807	467	-	464,274	44,141	-
Tennessee	643,920	146	-	644,066	7,839	178
Texas	4,336,294	14,122	17	4,350,433	84,540	119,786
Virginia	9,227	168	-	9,395	50	-
United States	15,083,834	37,910	39	15,121,783	823,937	163,960

1/ Cotton reduced in grade for reasons other than preparation.

2/ Cotton that has a weak, irregular, or immature staple.

Table 8. -- Grade reductions, by specified causes, of upland cotton ginned in the United States, by States, 1963-64

State	Cause of Reduction									
	Grass	Bark	Spindle Twist	Motes	Seed and Hulls	Stems	Sand and Dust	Oil	Strings and Bagging	Total
	<u>Bales</u>	<u>Bales</u>	<u>Bales</u>	<u>Bales</u>	<u>Bales</u>	<u>Bales</u>	<u>Bales</u>	<u>Bales</u>	<u>Bales</u>	<u>Bales</u>
Alabama	52,066	22	12	12	98	12	-	11	-	52,233
Arizona	23,364	96,337	880	-	568	64	1,204	8	-	122,425
Arkansas	55,510	3,327	481	93	453	619	-	207	33	60,723
California	54,788	64,143	1,402	55	52	-	9	10	-	120,459
Florida	1,857	9	-	-	-	-	-	-	-	1,866
Georgia	64,409	408	6	-	-	-	-	10	8	64,841
Illinois	-	-	-	-	-	-	-	-	-	-
Kentucky	54	-	-	-	-	-	-	-	-	54
Louisiana	71,711	1,517	18	89	-	8	-	294	-	73,637
Mississippi	107,449	567	19	457	32	26	-	105	-	108,655
Missouri	7,446	2,322	-	27	-	12	-	-	-	9,807
Nevada	176	210	-	-	-	-	-	-	-	386
New Mexico	1,236	4,846	1,222	-	-	-	11	-	-	7,315
North Carolina	51,922	-	-	66	31	-	-	-	-	52,019
Oklahoma	3,122	9,361	-	10	224	11	107	112	-	12,947
South Carolina	44,033	57	30	-	21	-	-	-	-	44,141
Tennessee	6,964	857	-	-	-	7	-	11	-	7,839
Texas	26,247	53,046	1,121	2,346	891	626	35	228	-	84,540
Virginia	50	-	-	-	-	-	-	-	-	50
United States	572,404	237,029	5,191	3,155	2,370	1,385	1,366	996	41	823,937

Table 9. -- Tenderability of upland cotton ginned, by States, 1963-64

State	Tenderable <u>1/</u>		Untenderable		Total crop <u>2/</u>	
	Bales	Pct.	Bales	Pct.	Bales	Pct.
Alabama	770,817	88.2	103,408	11.8	874,225	100.0
Arizona	577,305	76.1	181,031	23.9	758,336	100.0
Arkansas	1,326,291	88.4	174,609	11.6	1,500,900	100.0
California	1,534,694	88.5	200,193	11.5	1,734,887	100.0
Florida	10,347	69.3	4,589	30.7	14,936	100.0
Georgia	485,848	80.4	118,522	19.6	604,370	100.0
Illinois	1,321	74.4	455	25.6	1,776	100.0
Kentucky	4,874	89.1	599	10.9	5,473	100.0
Louisiana	555,873	82.3	119,339	17.7	675,212	100.0
Mississippi	1,878,924	89.3	224,726	10.7	2,103,650	100.0
Missouri	408,542	88.7	51,891	11.3	460,433	100.0
Nevada	4,538	86.2	729	13.8	5,267	100.0
New Mexico	197,120	86.6	30,495	13.4	227,615	100.0
North Carolina	299,672	82.8	62,274	17.2	361,946	100.0
Oklahoma	210,943	65.0	113,646	35.0	324,589	100.0
South Carolina	401,893	86.6	62,381	13.4	464,274	100.0
Tennessee	609,624	94.7	34,442	5.3	644,066	100.0
Texas	3,101,284	71.3	1,249,149	28.7	4,350,433	100.0
Virginia	8,218	87.5	1,177	12.5	9,395	100.0
All States	12,388,128	81.9	2,733,655	18.1	15,121,783	100.0

1/ Tenderable with respect to grade and staple in settlement of futures contracts.

2/ As reported by the Bureau of the Census, running bales.

Table 10. -- Tenderability of upland cotton ginned in the United States, 1947-1963

Year	Tenderable <u>1/</u>		Untenderable		Total crop <u>2/</u>	
	Bales	Pct.	Bales	Pct.	Bales	Pct.
1947	9,197,081	79.6	2,358,849	20.4	11,555,930	100.0
1948	11,719,213	80.4	2,857,601	19.6	14,576,814	100.0
1949	11,791,158	74.1	4,113,544	25.9	15,904,702	100.0
1950	7,234,459	73.5	2,611,224	26.5	9,845,683	100.0
1951	10,793,023	71.8	4,232,480	28.2	15,025,503	100.0
1952	10,982,423	73.9	3,875,742	26.1	14,858,165	100.0
1953	13,691,670	84.2	2,560,929	15.8	16,252,599	100.0
1954	11,506,960	84.8	2,070,033	15.2	13,576,993	100.0
1955	11,106,760	76.6	3,393,764	23.4	14,500,524	100.0
1956	10,609,930	81.0	2,492,207	19.0	13,102,137	100.0
1957	6,859,873	63.5	3,940,845	36.5	10,800,718	100.0
1958	9,768,742	86.0	1,584,723	14.0	11,353,465	100.0
1959	11,401,025	78.9	3,044,992	21.1	14,446,017	100.0
1960	10,050,977	70.8	4,148,110	29.2	14,199,087	100.0
1961	11,655,270	81.7	2,608,095	18.3	14,263,365	100.0
1962	11,373,949	77.1	3,380,447	22.9	14,754,396	100.0
1963	12,388,128	81.9	2,733,655	18.1	15,121,783	100.0

1/ Tenderable with respect to grade and staple in settlement of futures contracts. Commencing with 1961 crop, includes additional qualities made tenderable under New Orleans interior delivery contract.

2/ As reported by the Bureau of the Census, running bales.

Table 11. -- Grade and staple of upland cotton ginned in Alabama, 1963-64

Grade	13/16 inch and shorter	7/8 inch	29/32 inch	15/16 inch	31/32 inch	1 inch	1-1/32 inches	1-1/16 inches	1-3/32 inches	1-1/8 inches	1-5/32 inches	1-3/16 inches	1-7/32 inches	1-1/4 inches and longer	All staples	
	Bales	Bales	Bales	Bales	Bales	Bales	Bales	Bales	Bales	Bales	Bales	Bales	Bales	Bales	Bales	Percent
White:																
G.M.	-	-	-	-	-	11	98	512	22	-	-	-	-	-	643	0.1
S.M.	-	-	-	11	431	4,792	39,200	44,045	1,674	33	-	-	-	-	89,186	10.2
M.+	-	-	-	-	-	99	714	1,031	65	-	-	-	-	-	1,809	.2
S.L.M.	-	-	-	396	1,224	25,869	169,828	109,883	3,361	61	-	-	-	-	310,622	35.6
S.L.M.+	-	-	-	17	54	1,813	5,181	5,181	205	11	-	-	-	-	18,017	2.1
L.M.	-	-	-	408	2,586	38,943	131,161	37,011	907	29	-	-	-	-	211,045	24.1
L.M.+	-	-	-	33	250	2,995	14,022	4,650	33	11	-	-	-	-	21,994	2.5
S.G.O.	-	25	-	142	1,643	19,843	49,200	11,083	86	-	-	-	-	-	82,022	9.4
S.G.O.+	-	-	-	27	432	3,486	6,310	1,241	-	-	-	-	-	-	11,633	1.3
G.O.	-	-	-	62	534	3,486	6,310	1,241	-	-	-	-	-	-	11,633	1.3
G.O.+	-	-	-	30	92	503	592	106	10	-	-	-	-	-	1,333	.2
Total	25	25	30	1,099	6,841	98,794	421,800	214,908	6,363	145	-	-	-	-	749,975	85.9
Light Spotted:																
G.M.	-	-	-	-	-	11	10	-	-	-	-	-	-	-	21	.*
S.M.	-	-	-	12	142	1,728	7,447	3,846	22	-	-	-	-	-	13,197	1.5
M.	-	-	-	74	737	7,933	28,135	13,358	275	-	-	-	-	-	50,312	5.8
S.L.M.	-	-	-	163	956	6,750	20,849	6,096	63	11	-	-	-	-	34,908	4.0
L.M.	-	-	30	73	583	4,080	8,385	2,664	23	-	-	-	-	-	15,833	1.8
Total	-	-	30	342	2,418	20,502	64,826	25,964	363	11	-	-	-	-	114,476	13.1
Spotted:																
G.M.	-	-	-	-	-	-	-	-	-	-	-	-	-	-	-	.*
S.M.	-	-	-	-	-	46	142	17	-	-	-	-	-	-	205	.*
M.	-	-	-	54	336	378	378	88	-	-	-	-	-	-	856	.1
S.L.M.	-	-	-	11	145	459	347	44	-	-	-	-	-	-	1,006	.1
L.M.	-	-	-	61	76	373	330	40	-	-	-	-	-	-	880	.1
Total	-	-	-	72	275	1,214	1,197	189	-	-	-	-	-	-	2,947	.3
Tinged:																
G.M.	-	-	-	-	-	-	-	-	-	-	-	-	-	-	-	.*
S.M.	-	-	-	-	-	8	32	-	-	-	-	-	-	-	32	.*
M.	-	-	-	-	-	17	16	-	-	-	-	-	-	-	8	.*
S.L.M.	-	-	-	11	42	42	42	-	-	-	-	-	-	-	33	.*
L.M.	-	-	-	11	67	67	48	-	-	-	-	-	-	-	53	.*
Total	-	-	-	11	67	67	48	-	-	-	-	-	-	-	126	.*
Light Gray:																
G.M.	-	-	-	-	-	13	-	11	-	-	-	-	-	-	24	.*
S.M.	-	-	-	228	1,039	505	704	20	-	-	-	-	-	-	1,801	.2
M.	-	-	-	395	1,445	93	43	11	-	-	-	-	-	-	2,504	.3
S.L.M.	-	-	-	563	2,590	1,252	71	-	-	-	-	-	-	-	147	.*
Total	-	-	-	1,099	6,841	2,590	1,252	71	-	-	-	-	-	-	4,476	.5
Gray:																
G.M.	-	-	-	-	-	-	-	-	-	-	-	-	-	-	-	.*
S.M.	-	-	-	10	45	51	21	11	-	-	-	-	-	-	41	.*
M.	-	-	-	10	45	51	21	11	-	-	-	-	-	-	127	.*
S.L.M.	-	-	-	10	56	70	32	11	-	-	-	-	-	-	11	.*
Total	-	-	-	10	56	70	32	11	-	-	-	-	-	-	179	.*
Below Grade:																
G.M.	-	-	-	54	248	908	704	132	-	-	-	-	-	-	2,046	.2
Total	25	25	30	1,598	10,401	124,145	489,859	241,275	6,746	156	-	-	-	-	674,225	100.0
All grades:																
Percent	Percent	Percent	Percent	Percent	Percent	Percent	Percent	Percent	Percent	Percent	Percent	Percent	Percent	Percent	Percent	Percent
0.2	1.2	14.2	56.0	27.6	.8	-	-	-	-	-	-	-	-	-	100.0	-
All Grades:																
1/ As reported by the Bureau of the Census, running bales.																
* Less than 0.05 percent.																
Percentage rough preparation..... 0.3																
Grade index..... 95.7																
Average staple..... 33.1																

Table 15. -- Grade and staple of upland cotton ginned in Florida, 1963-64

Grade	13/16 inch and shorter	7/8 inch	29/32 inch	15/16 inch	31/32 inch	1 inch	1-1/32 inches	1-1/16 inches	1-3/32 inches	1-1/8 inches	1-5/32 inches	1-3/16 inches	1-7/32 inches	1-1/4 inches and longer	All staples	
	Bales	Bales	Bales	Bales	Bales	Bales	Bales	Bales	Bales	Bales	Bales	Bales	Bales	Bales	Bales	Percent
White:																
G.M.	-	-	-	-	-	41	115	56	-	-	-	-	-	-	212	1.4
S.M.	-	-	-	-	-	-	-	-	-	-	-	-	-	-	-	-
M.+	-	-	-	-	-	-	-	-	-	-	-	-	-	-	-	-
M.	-	-	-	-	21	290	1,527	740	22	-	-	-	-	-	2,600	17.4
S.L.M.+	-	-	-	-	24	85	27	-	-	-	-	-	-	-	136	0.9
S.L.M.	-	-	-	-	55	850	2,754	368	-	-	-	-	-	-	4,027	26.9
L.M.+	-	-	-	-	58	126	229	52	-	-	-	-	-	-	465	3.1
L.M.	-	-	-	9	120	636	913	156	-	-	-	-	-	-	1,834	12.3
S.G.O.+	-	-	-	-	-	-	9	-	-	-	-	-	-	-	9	0.1
S.G.O.	-	-	-	-	36	165	56	12	-	-	-	-	-	-	269	1.8
G.O.+	-	-	-	-	-	-	-	-	-	-	-	-	-	-	-	-
G.O.	-	-	-	-	-	52	12	-	-	-	-	-	-	-	64	0.4
Total	-	-	-	9	290	2,164	5,700	1,411	22	-	-	-	-	-	9,616	64.3
Light Spotted:																
G.M.	-	-	-	-	-	98	166	23	-	-	-	-	-	-	314	2.1
S.M.	-	-	-	-	25	480	1,027	112	-	-	-	-	-	-	1,657	11.1
M.	-	-	-	-	38	917	1,159	114	-	-	-	-	-	-	2,300	15.4
S.L.M.	-	-	-	-	102	262	359	23	-	-	-	-	-	-	708	4.7
L.M.	-	-	-	-	44	-	-	-	-	-	-	-	-	-	-	-
Total	-	-	-	8	209	1,777	2,713	272	-	-	-	-	-	-	4,979	33.3
Spotted:																
G.M.	-	-	-	-	-	-	-	-	-	-	-	-	-	-	-	-
S.M.	-	-	-	-	13	-	12	-	-	-	-	-	-	-	25	0.2
M.	-	-	-	-	-	62	19	-	-	-	-	-	-	-	82	0.4
S.L.M.	-	-	-	-	-	31	20	-	-	-	-	-	-	-	50	0.3
L.M.	-	-	-	8	-	-	-	-	-	-	-	-	-	-	28	0.2
Total	-	-	-	8	13	113	31	-	-	-	-	-	-	-	165	1.1
Light Gray:																
G.M.	-	-	-	-	-	-	-	-	-	-	-	-	-	-	-	-
S.M.	-	-	-	-	-	10	-	-	-	-	-	-	-	-	10	0.1
M.	-	-	-	-	-	8	-	-	-	-	-	-	-	-	8	0.1
S.L.M.	-	-	-	-	-	-	-	-	-	-	-	-	-	-	-	-
Total	-	-	-	-	-	18	-	-	-	-	-	-	-	-	18	0.2
Gray:																
G.M.	-	-	-	-	-	-	-	-	-	-	-	-	-	-	-	-
S.M.	-	-	-	-	-	-	-	-	-	-	-	-	-	-	-	-
M.	-	-	-	-	-	-	-	-	-	-	-	-	-	-	-	-
S.L.M.	-	-	-	-	-	-	13	-	-	-	-	-	-	-	13	0.1
Total	-	-	-	-	-	-	13	-	-	-	-	-	-	-	13	0.1
Below Grade:																
G.M.	-	-	-	-	36	61	48	-	-	-	-	-	-	-	145	1.0
All grades	-	-	-	25	548	4,153	8,505	1,683	22	-	-	-	-	-	14,936	100.0
All grades																
Percent	0.2	0.2	0.2	0.2	3.7	27.8	56.9	11.3	.1	-	-	-	-	-	100.0	
As reported by the Bureau of the Census, running bales.																
Percentage rough preparation... 0.1																
Grade index..... 92.2																
Average staple..... 32.6																

Table 17. -- Grade and staple of upland cotton ginned in Illinois, 1963-64

Grade	13/16 inch and shorter	7/8 inch	29/32 inch	15/16 inch	31/32 inch	1 inch	1-1/32 inches	1-1/16 inches	1-3/32 inches	1-1/8 inches	1-5/32 inches	1-3/16 inches	1-7/32 inches	1-1/4 inches and longer	All staples	
	Bales	Bales	Bales	Bales	Bales	Bales	Bales	Bales	Bales	Bales	Bales	Bales	Bales	Bales	Bales	Percent
White:																
G.M.	-	-	-	-	-	-	-	78	47	13	-	-	-	-	138	7.8
S.M.	-	-	-	-	-	-	-	6	6	-	-	-	-	-	12	.7
M.+	-	-	-	-	-	-	16	392	130	19	-	-	-	-	957	31.4
M.	-	-	-	-	-	-	7	20	12	-	-	-	-	-	39	2.2
S.L.M.+	-	-	-	-	-	-	26	300	12	6	-	-	-	-	344	19.4
S.L.M.	-	-	-	-	-	-	-	6	-	-	-	-	-	-	6	.3
L.M.+	-	-	-	-	-	4	32	109	28	-	-	-	-	-	173	9.7
L.M.	-	-	-	-	-	-	-	16	-	-	-	-	-	-	16	.9
S.G.O.+	-	-	-	-	-	7	57	-	6	-	-	-	-	-	70	3.9
S.G.O.	-	-	-	-	-	-	-	-	-	-	-	-	-	-	-	-
G.O.+	-	-	-	-	-	-	-	-	-	-	-	-	-	-	-	-
G.O.	-	-	-	-	-	-	-	-	-	-	-	-	-	-	-	-
Total	-	-	-	-	-	11	138	927	241	38	-	-	-	-	1,355	76.3
Light Spotted:																
G.M.	-	-	-	-	-	-	-	-	-	-	-	-	-	-	-	-
S.M.	-	-	-	-	-	-	-	-	-	-	-	-	-	-	-	-
M.	-	-	-	-	-	13	32	22	-	-	-	-	-	-	54	3.0
S.L.M.	-	-	-	-	-	13	30	33	-	-	-	-	-	-	76	4.3
L.M.	-	-	-	-	-	13	57	7	-	-	-	-	-	-	77	4.3
Total	-	-	-	-	-	26	119	62	-	-	-	-	-	-	207	11.6
Spotted:																
G.M.	-	-	-	-	-	-	-	-	-	-	-	-	-	-	-	-
S.M.	-	-	-	-	-	-	-	-	-	-	-	-	-	-	-	-
M.	-	-	-	-	-	13	17	7	-	-	-	-	-	-	37	2.1
S.L.M.	-	-	-	-	-	7	13	13	-	-	-	-	-	-	33	1.9
L.M.	-	-	-	-	-	19	22	-	-	-	-	-	-	-	41	2.3
Total	-	-	-	-	-	39	52	20	-	-	-	-	-	-	111	6.3
Tinged:																
G.M.	-	-	-	-	-	-	-	-	-	-	-	-	-	-	-	-
S.M.	-	-	-	-	-	-	-	-	-	-	-	-	-	-	-	-
M.	-	-	-	-	-	7	-	-	-	-	-	-	-	-	7	.4
S.L.M.	-	-	-	-	-	-	-	-	-	-	-	-	-	-	-	-
L.M.	-	-	-	-	-	13	-	-	-	-	-	-	-	-	13	.7
Total	-	-	-	-	-	13	7	-	-	-	-	-	-	-	20	1.1
Below Grade	-	-	-	-	-	26	50	7	-	-	-	-	-	-	83	4.7
All Grades	-	-	-	-	-	115	366	1,016	241	38	-	-	-	-	1,776	100.0
All grades	-	-	-	-	-	6.5	20.6	57.2	13.6	2.1	-	-	-	-	100.0	-

As reported by the Bureau of the Census, running bales.
 Percentage rough preparation..... 0
 Grade index..... 91.8
 Average staple..... 33.8

Table 22. -- Grade and staple of upland cotton ginned in Nevada, 1963-64

Grade	13/16 inch and shorter	7/8 inch	29/32 inch	15/16 inch	31/32 inch	1 inch	1-1/32 inches	1-1/16 inches	1-3/32 inches	1-1/8 inches	1-5/32 inches	1-3/16 inches	1-7/32 inches	1-1/4 inches and longer	All staples		
	Bales	Bales	Bales	Bales	Bales	Bales	Bales	Bales	Bales	Bales	Bales	Bales	Bales	Bales		Bales	Percent
White:																	
G.M.	-	-	-	-	-	-	-	-	-	-	-	-	-	-	-	-	-
S.M.	-	-	-	-	-	-	-	219	33	77	120	-	-	-	449	8.5	-
M.	-	-	-	-	-	-	-	-	155	319	1,619	171	87	-	2,580	49.1	-
S.L.M.+	-	-	-	-	-	-	21	9	9	8	95	12	-	-	124	2.4	-
S.L.M.	-	-	-	-	-	-	-	94	70	187	763	297	23	-	1,434	27.2	-
L.M.+	-	-	-	-	-	-	-	57	-	17	11	24	10	-	38	.7	-
L.M.	-	-	-	-	-	-	-	-	-	26	22	-	-	-	129	2.4	-
S.O.O.+	-	-	-	-	-	-	-	-	-	-	-	-	-	-	-	-	-
S.O.O.	-	-	-	-	-	-	-	-	4	-	-	-	-	-	4	.1	-
G.O.+	-	-	-	-	-	-	-	-	-	-	-	-	-	-	-	-	-
G.O.	-	-	-	-	-	-	-	4	-	-	-	-	-	-	4	.1	-
Total	-	-	-	-	-	-	21	591	262	634	2,630	504	170	-	4,762	90.5	-
Light Spotted:																	
G.M.	-	-	-	-	-	-	-	-	-	-	-	-	-	-	-	-	-
S.M.	-	-	-	-	-	-	12	-	12	-	8	-	-	-	32	.6	-
M.	-	-	-	-	-	-	-	38	24	17	37	-	-	-	120	2.3	-
S.L.M.	-	-	-	-	-	-	-	49	34	17	28	28	-	-	160	3.0	-
L.M.	-	-	-	-	-	-	-	34	12	9	-	-	-	-	58	1.0	-
Total	-	-	-	-	-	-	8	121	82	43	73	28	-	-	367	6.9	-
Tinged:																	
G.M.	-	-	-	-	-	-	-	-	-	-	-	-	-	-	-	-	-
S.M.	-	-	-	-	-	-	-	-	-	-	-	-	-	-	-	-	-
M.	-	-	-	-	-	-	-	9	-	-	-	-	-	-	9	.2	-
S.L.M.	-	-	-	-	-	-	4	9	-	-	-	-	-	-	13	.2	-
L.M.	-	-	-	-	-	-	-	-	-	-	-	-	-	-	-	-	-
Total	-	-	-	-	-	-	4	18	-	-	-	-	-	-	22	.4	-
Below Grade, . . .	-	-	-	-	-	-	-	-	4	-	-	-	-	-	4	.1	-
All Grades, . . .	-	-	-	-	-	-	-	108	4	-	-	-	-	-	112	2.1	-
All Grades, . . .	-	-	-	-	-	-	8	41	898	677	2,703	532	120	-	5,267	100.0	-
All Grades, . . .	-	-	-	-	-	-	0.2	.8	15.9	12.9	51.2	10.1	2.3	-	100.0	100.0	-
As reported by the Bureau of the Census, running bales.	-	-	-	-	-	-	-	-	-	-	-	-	-	-	-	-	-
Percentage rough preparation, . . .	-	-	-	-	-	-	-	-	-	-	-	-	-	-	-	-	0.2
Grade index, . . .	-	-	-	-	-	-	-	-	-	-	-	-	-	-	-	-	96.6
Average staple, . . .	-	-	-	-	-	-	-	-	-	-	-	-	-	-	-	-	36.4

Table 25. -- Grade and staple of upland cotton ginned in Oklahoma, 1963-64

Grade	13/16 inch and shorter	7/8 inch	29/32 inch	15/16 inch	31/32 inch	1 inch	1-1/32 inches	1-1/16 inches	1-3/32 inches	1-1/8 inches	1-5/32 inches	1-3/16 inches	1-7/32 inches	1-1/4 inches and longer	All staples		
															Bales	Percent	Bales
White:																	
G.M.	-	38	265	1,378	772	362	211	567	199	28	-	-	-	-	-	3,840	1.2
S.M.	-	-	-	10	9	-	10	-	-	-	-	-	-	-	-	29	-
M.	10	589	2,960	8,531	4,035	2,709	2,444	4,637	1,987	605	67	9	-	-	-	28,583	8.8
S.L.M.+	-	9	111	315	205	39	115	233	69	41	-	-	-	-	-	1,137	.4
S.L.M.	-	489	3,323	8,906	2,916	1,842	2,793	4,854	2,174	871	312	110	29	-	-	28,619	8.8
S.L.M.+	-	40	269	467	271	186	152	280	184	39	10	-	-	-	-	1,898	.6
L.M.	-	131	1,266	2,279	470	414	429	1,090	456	114	50	10	-	-	-	6,709	2.1
S.O.O.+	-	19	101	167	32	32	52	84	32	11	-	-	-	-	-	511	.2
S.O.O.	-	19	151	493	167	112	165	62	23	-	12	-	-	-	-	1,204	.4
G.O.+	-	-	-	32	-	46	-	-	-	-	-	-	-	-	-	52	-
G.O.	-	10	73	92	-	20	-	20	10	-	10	-	-	-	-	261	.1
Total	10	1,344	8,519	22,670	8,877	5,763	6,371	11,827	5,134	1,709	461	129	29	-	-	72,843	22.6
Light Spotted:																	
G.M.	-	10	745	3,561	6,491	2,723	856	222	103	-	-	-	-	-	-	31	-
S.M.	-	411	11,189	38,036	53,428	14,363	5,457	2,058	738	350	68	19	-	-	-	14,761	4.5
M.	-	247	5,909	24,241	31,985	6,578	2,128	1,371	1,280	196	99	39	10	-	-	127,953	39.4
S.L.M.	-	57	513	2,409	3,630	991	313	353	347	20	9	-	-	-	-	74,468	22.9
L.M.	-	775	18,366	68,247	95,955	24,655	8,754	4,004	3,566	566	176	58	10	-	-	8,756	2.7
Total	230	3,686	7,222	8,566	1,261	293	207	49	-	9	-	-	-	-	-	225,986	69.5
Spotted:																	
G.M.	-	162	177	151	30	10	-	-	-	-	-	-	-	-	-	-	-
S.M.	-	114	1,862	3,802	3,893	607	92	64	-	-	-	-	-	-	-	530	.2
M.	-	106	1,563	2,979	3,774	528	150	99	49	9	-	-	-	-	-	10,434	3.2
S.L.M.	-	10	299	764	748	96	41	44	-	-	-	-	-	-	-	9,257	2.9
L.M.	-	230	3,686	7,222	8,566	1,261	293	207	49	9	-	-	-	-	-	2,002	.6
Total	-	-	-	-	-	-	-	-	-	-	-	-	-	-	-	22,223	6.9
Tinged:																	
G.M.	-	10	10	-	-	-	-	-	-	-	-	-	-	-	-	-	-
S.M.	-	8	143	174	194	10	-	-	-	-	-	-	-	-	-	20	-
M.	-	-	-	-	-	-	-	-	-	-	-	-	-	-	-	529	.2
S.L.M.	-	-	-	-	-	-	-	-	-	-	-	-	-	-	-	465	.1
L.M.	-	-	-	-	-	-	-	-	-	-	-	-	-	-	-	194	.1
Total	-	-	-	-	-	-	-	-	-	-	-	-	-	-	-	1,208	.4
Yellow Stained:																	
G.M.	-	-	-	-	-	-	-	-	-	-	-	-	-	-	-	-	-
S.M.	-	-	-	-	-	-	-	-	-	-	-	-	-	-	-	-	-
M.	-	-	-	-	-	-	-	-	-	-	-	-	-	-	-	-	-
S.L.M.	-	-	-	-	-	-	-	-	-	-	-	-	-	-	-	-	-
L.M.	-	-	-	-	-	-	-	-	-	-	-	-	-	-	-	-	-
Total	-	-	-	-	-	-	-	-	-	-	-	-	-	-	-	-	-
Light Gray:																	
G.M.	-	-	-	-	-	-	-	-	-	-	-	-	-	-	-	-	-
S.M.	-	-	-	-	-	-	-	-	-	-	-	-	-	-	-	-	-
M.	-	-	-	-	-	-	-	-	-	-	-	-	-	-	-	-	-
S.L.M.	-	-	-	-	-	-	-	-	-	-	-	-	-	-	-	-	-
L.M.	-	-	-	-	-	-	-	-	-	-	-	-	-	-	-	-	-
Total	-	-	-	-	-	-	-	-	-	-	-	-	-	-	-	-	-
Gray:																	
G.M.	-	-	-	-	-	-	-	-	-	-	-	-	-	-	-	-	-
S.M.	-	-	-	-	-	-	-	-	-	-	-	-	-	-	-	-	-
M.	-	-	-	-	-	-	-	-	-	-	-	-	-	-	-	-	-
S.L.M.	-	-	-	-	-	-	-	-	-	-	-	-	-	-	-	-	-
L.M.	-	-	-	-	-	-	-	-	-	-	-	-	-	-	-	-	-
Total	-	-	-	-	-	-	-	-	-	-	-	-	-	-	-	-	-
Below Grade	10	206	343	501	401	132	123	38	10	-	-	-	-	-	-	1,764	.5
All grades	1,049	24,134	85,164	127,683	35,215	14,996	10,797	15,582	6,572	2,312	646	206	39	-	-	324,589	100.0
All grades	0.3	7.4	26.2	39.6	10.8	4.6	3.3	4.8	2.0	.7	.2	.1	-	-	-	100.0	-
1/ As reported by the Bureau of the Census, running bales.																	
* Less than 0.05 percent.																	
Percentage rough preparation..... 0.4																	
Grade index..... 93.7																	
Average staple..... 30.2																	

Table 27. -- Grade and staple of upland cotton ginned in Tennessee, 1963-64

Grade	13/16 inch and shorter	7/8 inch	29/32 inch	15/16 inch	31/32 inch	1 inch	1-1/32 inches	1-1/16 inches	1-3/32 inches	1-1/8 inches	1-5/32 inches	1-3/16 inches	1-7/32 inches	1-1/4 inches and longer	All staples	
	Bales	Bales	Bales	Bales	Bales	Bales	Bales	Bales	Bales	Bales	Bales	Bales	Bales	Bales	Bales	Percent
White:																
G.M.	-	-	-	-	-	-	17	45	-	-	-	-	-	-	62	-
S.M.	-	-	8	22	191	1,859	30,094	113,302	11,666	455	-	-	-	-	157,697	24.5
M.+	-	-	-	-	-	-	440	1,972	334	10	-	-	-	-	2,756	.4
M.	-	-	-	15	326	4,416	59,933	170,007	14,901	517	-	-	-	-	250,115	39.1
S.L.M.+	-	-	9	9	-	346	3,338	7,664	489	-	-	-	-	-	11,646	1.8
S.L.M.	-	-	9	69	386	5,487	46,911	76,848	2,933	10	-	-	-	-	132,653	20.6
L.M.+	-	-	-	-	30	392	3,785	6,962	434	-	-	-	-	-	11,603	1.8
L.M.	-	-	33	33	192	2,590	10,418	10,466	292	-	-	-	-	-	23,991	3.7
S.G.O.+	-	-	-	-	-	75	277	304	21	-	-	-	-	-	677	.1
S.G.O.	-	-	-	9	60	650	1,519	664	52	-	-	-	-	-	2,924	.5
G.O.+	-	-	-	-	-	-	12	-	-	-	-	-	-	-	12	-
G.O.	-	-	-	-	53	295	121	21	-	-	-	-	-	-	450	.1
Total	-	-	17	157	1,238	15,870	156,865	368,255	31,122	992	-	-	-	-	594,516	92.6
Light Spotted:																
G.M.	-	-	-	-	-	116	1,291	1,366	36	-	-	-	-	-	2,809	.4
S.M.	-	-	-	32	184	1,786	7,663	10,691	361	-	-	-	-	-	20,717	3.2
M.	-	-	-	57	345	2,498	6,380	5,531	159	-	-	-	-	-	14,970	2.3
S.L.M.	-	-	-	45	333	1,349	2,016	766	42	-	-	-	-	-	4,953	.7
L.M.	-	-	-	-	-	-	-	-	-	-	-	-	-	-	-	-
Total	-	-	-	134	862	5,749	17,350	16,354	598	-	-	-	-	-	43,047	6.6
Spotted:																
G.M.	-	-	-	-	-	14	57	5	-	-	-	-	-	-	76	-
S.M.	-	-	-	14	125	236	168	168	-	-	-	-	-	-	543	.1
M.	-	-	-	5	88	426	542	113	-	-	-	-	-	-	1,174	.2
S.L.M.	-	-	-	11	322	859	345	26	-	-	-	-	-	-	1,563	.2
L.M.	-	-	-	-	-	-	-	-	-	-	-	-	-	-	-	-
Total	-	-	-	16	424	1,424	1,180	312	-	-	-	-	-	-	3,356	.5
Tinted:																
G.M.	-	-	-	-	-	-	-	-	-	-	-	-	-	-	-	-
S.M.	-	-	-	-	7	13	13	6	-	-	-	-	-	-	39	-
M.	-	-	-	14	21	170	86	-	-	-	-	-	-	-	291	-
S.L.M.	-	-	-	1	75	99	5	-	-	-	-	-	-	-	180	-
L.M.	-	-	-	-	-	-	-	-	-	-	-	-	-	-	-	-
Total	-	-	-	15	103	282	104	6	-	-	-	-	-	-	510	-
Light Gray:																
G.M.	-	-	-	-	-	44	328	292	-	-	-	-	-	-	664	.1
S.M.	-	-	-	12	67	103	85	-	-	-	-	-	-	-	267	-
M.	-	-	-	5	17	-	10	-	-	-	-	-	-	-	32	-
S.L.M.	-	-	-	-	-	-	-	-	-	-	-	-	-	-	-	-
L.M.	-	-	-	14	17	128	431	387	-	-	-	-	-	-	903	.1
Total	-	-	-	81	334	857	267	21	-	-	-	-	-	-	1,560	.2
Below Grade:																
All grades	-	-	17	403	2,992	24,327	176,213	407,394	31,728	992	-	-	-	-	644,066	100.0
All grades	-	-	-	0.1	.5	3.6	27.4	63.1	4.9	.2	-	-	-	-	100.0	-

Percentage rough preparation..... 98.1
 Grade index..... 33.7
 Average staple.....

Table 30. -- Grade and staple of upland cotton ginned, during specified periods, by States, 1963-64

ALABAMA

ARIZONA

Grade and staple	ALABAMA						ARIZONA					
	Prior to Sept. 1	September	October	November	After Nov. 30	Total Crop	Prior to Sept. 1	September	October	November	After Nov. 30	Total Crop
Grade	Bales	Bales	Bales	Bales	Bales	Bales	Bales	Bales	Bales	Bales	Bales	Bales
White:												
G.M.	-	547	96	-	-	643	141	200	323	86	8	758
S.M.	9,335	53,899	25,299	629	24	89,186	1,433	4,395	10,343	2,616	1,498	20,285
M.+	222	986	664	37	-	1,909	53	123	418	404	138	1,136
M.	48,519	134,211	118,288	9,488	116	310,622	584	12,137	85,256	73,058	31,245	202,280
S.L.M.+	1,083	6,756	9,532	623	23	18,017	13	338	5,002	4,509	3,002	12,864
S.L.M.	13,262	64,301	116,767	16,377	338	211,045	238	5,000	44,682	113,763	78,882	242,565
L.M.+	1,429	7,965	10,875	1,596	129	21,994	-	19	535	2,434	2,818	5,806
L.M.	3,747	21,597	46,194	9,665	819	82,022	-	535	2,947	9,396	18,636	31,514
S.G.O.+	-	315	978	262	-	1,555	-	10	-	85	148	243
S.G.O.	383	2,587	6,502	1,913	248	11,633	-	114	399	1,171	19,496	21,180
G.O.+	-	-	-	16	-	16	-	-	9	-	40	49
G.O.	56	388	535	240	114	1,333	-	20	61	258	4,732	5,071
Total	78,036	293,552	335,730	40,846	1,811	749,975	2,462	22,891	149,975	207,780	160,643	543,751
Light Spotted:												
G.M.	-	21	-	-	-	21	-	-	-	-	-	-
S.M.	3,291	8,315	1,500	80	11	13,197	9	1,022	4,172	988	157	6,348
M.	14,943	26,442	6,695	2,057	375	50,512	566	7,561	39,251	19,510	2,977	69,865
S.L.M.	7,489	17,572	5,629	3,041	1,177	34,908	386	3,715	14,606	15,652	8,299	42,658
L.M.	2,648	8,019	3,082	1,174	915	15,838	44	491	1,852	4,866	26,949	34,202
Total	28,371	60,369	16,906	6,352	2,478	114,476	1,005	12,789	59,881	41,016	38,382	153,073
Spotted:												
G.M.	-	-	-	-	-	-	-	-	-	-	-	-
S.M.	29	128	23	25	-	205	9	29	90	10	-	138
M.	135	316	117	178	110	856	40	427	1,840	432	140	2,879
S.L.M.	79	267	144	295	221	1,006	40	443	1,562	897	385	3,327
L.M.	131	298	273	70	108	880	-	122	411	251	752	1,536
Total	374	1,009	557	568	439	2,947	89	1,021	3,903	1,590	1,277	7,880
Tinged:												
All grades . .	34	9	-	24	59	126	-	-	-	-	-	-
Light Gray:												
G.M.	-	11	13	-	-	24	-	-	17	-	10	27
S.M.	-	70	1,594	137	-	1,801	-	19	198	1,070	2,343	3,630
M.	11	40	1,838	575	40	2,504	-	-	543	3,014	5,581	9,138
S.L.M.	-	11	95	41	-	147	-	10	90	354	569	1,023
Total	11	132	3,540	753	40	4,476	-	29	848	4,438	8,503	13,818
Gray:												
All grades . .	-	22	135	22	-	179	-	-	68	282	572	922
Below Grade . .	75	727	746	454	44	2,046	-	48	463	2,879	35,502	38,892
All grades . . .	106,901	355,820	357,614	49,019	4,871	874,225 1/2	3,556	36,778	215,138	257,985	244,879	758,336 1/2
Grade index . .	97.1	96.8	94.9	91.6	85.9	95.7	99.2	97.0	96.8	94.6	85.5	92.4
Staple (inches)												
13/16 & shorter.	-	-	-	-	-	-	-	-	10	-	977	987
7/8	-	-	-	25	-	25	-	-	-	20	3,060	3,080
29/32	-	-	-	-	30	30	-	-	9	30	2,293	2,332
15/16	-	323	829	203	233	1,588	-	10	119	443	22,735	23,307
31/32	190	1,486	5,748	1,712	1,265	10,401	7	76	236	1,743	37,958	40,020
1	4,138	30,673	70,140	16,612	2,582	124,145	459	939	2,901	6,143	41,286	51,728
1-1/32	44,646	188,179	227,745	28,600	689	489,859	2,032	18,688	101,534	126,324	92,338	340,916
1-1/16	55,037	131,813	52,498	1,855	72	241,275	1,058	14,686	83,633	105,267	36,562	241,206
1-3/32	2,818	3,293	623	12	-	6,746	-	429	3,482	4,448	2,335	10,694
1-1/8	72	53	31	-	-	156	-	375	7,111	7,358	3,771	18,615
1-5/32	-	-	-	-	-	-	-	1,062	13,657	5,552	1,005	21,216
1-3/16	-	-	-	-	-	-	-	458	2,079	451	468	3,456
1-7/32	-	-	-	-	-	-	-	47	141	32	30	250
1-1/4 & longer .	-	-	-	-	-	-	-	68	226	174	61	529
All staples . . .	106,901	355,820	357,614	49,019	4,871	874,225 1/2	3,556	36,778	215,138	257,985	244,879	758,336 1/2
Average staple (32nd inches)	33.5	33.3	32.9	32.6	31.8	33.1	33.2	33.6	33.8	33.6	32.4	33.3

1/2 As reported by the Bureau of the Census, running bales.

Table 31. -- Grade and staple of upland cotton ginned, during specified periods, by States, 1963-64

Grade and staple	ARKANSAS						CALIFORNIA					
	Prior to Sept. 1	September	October	November	After Nov. 30	Total Crop	Prior to Sept. 1	September	October	November	After Nov. 30	Total Crop
Grade	Bales	Bales	Bales	Bales	Bales	Bales	Bales	Bales	Bales	Bales	Bales	Bales
White:												
G.M.	-	42	396	21	-	459	-	2	21	-	-	23
S.M.	-	33,522	45,352	1,649	93	80,616	25	1,110	9,861	2,913	1,254	15,163
M.+	-	4,062	3,710	115	-	7,887	-	221	611	168	283	1,283
M.	-	207,690	223,966	22,914	504	455,074	153	2,228	109,054	120,151	42,893	274,479
S.L.M.+	-	20,359	21,402	1,509	33	43,303	-	62	19,015	11,303	5,012	35,392
S.L.M.	-	182,938	253,971	49,513	2,749	489,171	268	984	322,377	483,512	131,125	938,266
L.M.+	-	41,909	47,060	8,965	458	98,392	-	20	9,718	18,169	4,119	32,026
L.M.	-	31,868	61,513	19,952	6,544	119,877	25	168	26,421	75,193	87,018	188,825
S.G.O.+	-	1,899	3,443	1,928	546	7,816	-	-	177	695	275	1,147
S.G.O.	-	2,097	6,922	4,467	3,343	16,829	25	2	1,267	9,340	32,861	43,495
G.O.+	-	-	178	210	196	584	-	-	-	11	-	11
G.O.	-	84	838	954	905	2,781	-	-	44	1,330	12,152	13,526
Total	-	526,470	668,751	112,197	15,371	1,322,789	496	4,797	498,566	722,785	316,992	1,543,636
Light Spotted:												
G.M.	-	-	10	-	-	10	-	-	11	35	11	57
S.M.	-	1,454	2,590	273	15	4,332	-	23	248	358	1,443	2,072
M.	-	21,183	38,260	8,151	556	68,150	140	454	6,161	5,615	5,688	18,058
S.L.M.	-	21,491	32,100	12,449	4,540	70,580	25	473	6,144	10,731	12,543	29,916
L.M.	-	3,497	7,451	5,005	5,215	21,168	-	35	1,070	3,888	17,086	22,079
Total	-	47,625	80,411	25,878	10,326	164,240	165	985	13,634	20,627	36,771	72,182
Spotted:												
All grades . .	-	347	440	975	2,685	4,447	-	75	543	510	2,408	3,536
Tinged:												
All grades . .	-	10	-	43	220	273	-	-	-	-	38	38
Yellow Stained:												
All grades . .	-	-	-	8	-	8	-	-	-	-	-	-
Light Gray:												
G.M.	-	-	13	-	10	23	-	-	-	-	22	22
S.M.	-	548	810	205	117	1,680	-	-	2,723	5,261	13,241	21,225
M.	-	339	633	270	355	1,597	-	20	6,819	15,865	37,319	60,023
S.L.M.	-	30	91	87	99	307	-	-	762	1,786	12,877	15,425
Total	-	917	1,547	562	581	3,607	-	20	10,304	22,912	63,459	96,695
Gray:												
All grades . .	-	166	62	51	43	322	-	-	202	795	4,106	5,103
Below Grade . .	-	52	785	1,443	2,934	5,214	-	-	94	761	12,842	13,697
All grades . . .	-	575,587	751,996	141,157	32,160	1,500,900 ^{1/2}	661	5,877	523,343	768,390	436,616	1,734,887 ^{1/2}
Grade index . . .	-	95.9	95.1	91.5	81.9	94.8	95.2	97.9	94.9	93.6	88.7	92.8
Staple (inches)												
13/16 & shorter.	-	-	-	-	-	-	-	-	-	-	11	11
7/8	-	-	-	16	-	16	-	-	-	-	155	155
29/32	-	-	52	-	8	60	-	-	-	-	1,147	1,147
15/16	-	176	575	433	144	1,328	-	-	12	20	9,629	9,661
31/32	-	449	1,593	968	936	3,946	-	-	10	64	9,778	9,852
1	-	6,768	22,915	11,228	10,079	50,989	-	-	1,298	2,211	30,772	34,281
1-1/32	-	83,719	215,538	72,982	17,727	389,966	115	634	9,685	39,755	117,573	167,762
1-1/16	-	383,430	463,983	53,413	3,182	904,008	546	2,756	300,019	491,296	232,161	1,026,778
1-3/32	-	96,696	45,870	2,065	76	144,707	-	2,218	208,862	232,055	35,203	478,338
1-1/8	-	4,288	1,452	42	8	5,790	-	141	3,421	2,933	187	6,682
1-5/32	-	61	19	-	-	80	-	64	12	11	-	87
1-3/16	-	-	-	10	-	10	-	64	-	36	-	100
1-7/32	-	-	-	-	-	-	-	-	-	12	9	21
1-1/4 & longer .	-	-	-	-	-	-	-	-	-	12	-	12
All staples . . .	-	575,587	751,996	141,157	32,160	1,500,900 ^{1/2}	661	5,877	523,343	768,390	436,616	1,734,887 ^{1/2}
Average staple (32nd inches)	-	34.0	33.7	33.3	32.7	33.8	33.8	34.4	34.4	34.3	33.5	34.1

^{1/2} As reported by the Bureau of the Census, running bales.

Table 32. -- Grade and staple of upland cotton ginned, during specified periods, by States, 1963-64

FLORIDA

GEORGIA

Grade and staple	Prior to	September	October	November	After	Total	Prior to	September	October	November	After	Total
	Sept. 1	Bales	Bales	Bales	Nov. 30	Crop	Sept. 1	Bales	Bales	Bales	Nov. 30	Crop
White:												
G.M.	-	-	-	-	-	-	31	19	-	-	-	50
S.M.	132	80	-	-	-	212	10,344	10,215	4,312	264	10	25,145
M+.	-	-	-	-	-	-	699	646	328	10	10	1,693
M.	1,152	1,355	93	-	-	2,600	45,750	88,200	40,413	6,096	320	180,779
S.L.M+. . . .	-	121	15	-	-	136	3,512	6,417	3,109	607	53	13,698
S.L.M.	611	3,062	354	-	-	4,027	24,926	79,793	40,283	7,150	413	152,565
L.M+.	120	284	61	-	-	465	5,177	13,063	3,876	767	48	22,931
L.M.	285	1,098	426	25	-	1,834	14,845	56,921	19,321	2,868	299	94,254
S.G.O+. . . .	-	9	-	-	-	9	191	984	530	181	61	1,947
S.G.O.	26	118	111	14	-	269	1,518	8,013	3,850	662	193	14,236
G.O+.	-	-	-	-	-	-	-	38	-	11	-	49
G.O.	-	56	8	-	-	64	78	831	639	160	50	1,758
Total	2,326	6,183	1,068	39	-	9,616	107,071	265,140	116,661	18,776	1,457	509,105
Light Spotted:												
G.M.	-	-	-	-	-	-	-	-	-	-	-	-
S.M.	129	185	-	-	-	314	2,399	3,016	505	278	51	6,249
M.	644	968	45	-	-	1,657	7,020	13,989	5,597	2,230	337	29,173
S.L.M.	713	1,496	76	9	6	2,300	5,723	17,533	7,440	2,826	567	34,089
L.M.	195	406	102	5	-	708	2,290	9,484	3,771	1,204	322	17,071
Total	1,681	3,055	223	14	6	4,979	17,432	44,022	17,313	6,538	1,277	86,582
Spotted:												
All grades . .	95	54	8	8	-	165	285	931	684	1,903	633	4,436
Tinged:												
All grades . .	-	-	-	-	-	-	-	9	9	229	236	483
Yellow Stained:												
All grades . .	-	-	-	-	-	-	-	-	-	-	20	20
Light Gray:												
All grades . .	-	-	18	-	-	18	32	354	1,184	309	66	1,945
Gray:												
All grades . .	13	-	-	-	-	13	12	26	61	-	18	117
Below Grade. . .	63	44	33	5	-	145	12	242	737	270	421	1,682
All grades . . .	4,178	9,336	1,350	66	6	14,936 1/	124,844	310,724	136,649	28,025	4,128	604,370 1/
Grade index. . .	93.7	92.3	87.6	80.2	89.0	92.2	95.5	93.2	93.4	91.9	84.6	93.6
Staple (inches)												
13/16 & shorter.	-	-	-	-	-	-	-	-	-	-	-	-
7/8.	-	-	-	-	-	-	-	-	9	11	-	20
29/32.	-	-	-	-	-	-	3	-	58	33	48	142
15/16.	-	9	8	8	-	25	-	109	662	203	299	1,273
31/32.	216	189	137	6	-	548	72	2,138	5,250	1,268	1,065	9,793
1	1,196	2,268	640	43	6	4,153	5,192	38,686	37,168	9,728	1,604	92,378
1-1/32	1,982	5,972	542	9	-	8,505	75,143	219,914	77,957	15,205	990	389,209
1-1/16	771	889	23	-	-	1,683	43,452	47,535	14,733	1,557	122	107,399
1-3/32	13	9	-	-	-	22	982	2,179	738	20	-	3,919
1-1/8.	-	-	-	-	-	-	-	163	65	-	-	228
1-5/32	-	-	-	-	-	-	-	-	-	-	-	-
1-3/16	-	-	-	-	-	-	-	-	-	-	-	-
1-7/32	-	-	-	-	-	-	-	-	-	-	-	-
1-1/4 & longer .	-	-	-	-	-	-	-	-	9	-	-	9
All staples. . .	4,178	9,336	1,350	66	6	14,936 1/	124,844	310,724	136,649	28,025	4,128	604,370 1/
Average staple (32nd inches). .	32.8	32.8	32.3	31.8	32.0	32.8	33.3	33.0	32.8	32.6	31.9	33.0

1/ As reported by the Bureau of the Census, running bales.

Table 33. -- Grade and staple of upland cotton ginned, during specified periods, by States, 1963-64

ILLINOIS							KENTUCKY					
Grade and staple	Prior to Sept. 1	September	October	November	After Nov. 30	Total Crop	Prior to Sept. 1	September	October	November	After Nov. 30	Total Crop
Grade	Bales	Bales	Bales	Bales	Bales	Bales	Bales	Bales	Bales	Bales	Bales	Bales
White:												
G.M.	-	-	-	-	-	-	-	-	-	-	-	-
S.M.	-	67	71	-	-	138	-	133	459	19	-	611
M.+	-	-	12	-	-	12	-	12	-	-	-	12
M.	-	67	486	4	-	557	-	590	970	217	-	1,777
S.L.M.+	-	-	28	11	-	39	-	12	28	19	-	59
S.L.M.	-	-	301	43	-	344	-	478	1,003	288	5	1,774
L.M.+	-	-	6	-	-	6	-	-	106	19	-	125
L.M.	-	-	164	9	-	173	-	24	270	98	40	432
S.G.O.+	-	-	16	-	-	16	-	-	18	19	-	37
S.G.O.	-	-	28	29	13	70	-	-	-	-	30	30
G.O.+	-	-	-	-	-	-	-	-	-	-	-	-
G.O.	-	-	-	-	-	-	-	-	-	9	-	9
Total	-	134	1,112	96	13	1,355	-	1,249	2,854	688	75	4,866
Light Spotted:												
G.M.	-	-	-	-	-	-	-	-	-	-	-	-
S.M.	-	-	-	-	-	-	-	-	-	-	-	-
M.	-	-	32	22	-	54	-	84	32	29	-	145
S.L.M.	-	-	22	41	13	76	-	24	28	68	68	188
L.M.	-	-	-	50	27	77	-	-	18	98	35	151
Total	-	-	54	113	40	207	-	108	78	195	103	484
Spotted:												
G.M.	-	-	-	-	-	-	-	-	-	-	-	-
S.M.	-	-	-	-	-	-	-	-	-	-	-	-
M.	-	-	-	24	13	37	-	-	-	-	-	-
S.L.M.	-	-	-	33	-	33	-	-	-	30	5	35
L.M.	-	-	-	26	15	41	-	-	-	-	5	5
Total	-	-	-	83	28	111	-	-	-	30	10	40
Tinged:												
All grades . .	-	-	-	7	13	20	-	-	-	-	45	45
Below Grade. . .												
All grades . . .	-	-	-	55	28	83	-	-	-	-	38	38
Grade index. . .												
All grades . . .	-	102.0	95.4	82.1	75.4	91.8	-	97.6	96.4	92.0	78.8	95.1
Staple (inches)												
13/16 & shorter.	-	-	-	-	-	-	-	-	-	-	-	-
7/8.	-	-	-	-	-	-	-	-	-	-	-	-
29/32.	-	-	-	-	-	-	-	-	-	-	-	-
15/16.	-	-	-	-	-	-	-	-	-	-	-	-
31/32.	-	-	-	-	-	-	-	-	-	10	19	29
1	-	-	-	50	65	115	-	-	10	168	139	317
1-1/32	-	-	124	185	57	366	-	12	602	393	68	1,075
1-1/16	-	40	857	119	-	1,016	-	1,309	2,155	342	45	3,851
1-3/32	-	68	173	-	-	241	-	36	165	-	-	201
1-1/8.	-	26	12	-	-	38	-	-	-	-	-	-
1-5/32	-	-	-	-	-	-	-	-	-	-	-	-
1-3/16	-	-	-	-	-	-	-	-	-	-	-	-
1-7/32	-	-	-	-	-	-	-	-	-	-	-	-
1-1/4 & longer .	-	-	-	-	-	-	-	-	-	-	-	-
All staples. . .	-	134	1,166	354	122	1,776 1/2	-	1,357	2,932	913	271	5,473 1/2
Average staple (32nd inches) .	-	34.9	34.1	33.2	32.5	33.8	-	34.0	33.8	33.2	32.5	33.7

1/2 As reported by the Bureau of the Census, running bales.

Table 36. -- Grade and staple of upland cotton ginned, during specified periods, by States, 1963-64

Grade and staple	NEW MEXICO						NORTH CAROLINA					
	Prior to Sept. 1	September	October	November	After Nov. 30	Total Crop	Prior to Sept. 1	September	October	November	After Nov. 30	Total Crop
Grade	Bales	Bales	Bales	Bales	Bales	Bales	Bales	Bales	Bales	Bales	Bales	Bales
White:												
G.M.	-	201	1,489	207	10	1,907	-	-	8	-	-	8
S.M.	-	3,866	13,884	2,787	264	20,801	-	6,296	7,609	643	110	14,618
M.+	-	168	313	118	-	599	-	11	-	9	-	20
M.	-	7,765	53,714	16,720	5,192	83,391	-	33,413	75,314	18,127	1,496	128,350
S.L.M.+	-	674	6,836	1,414	366	9,290	-	1,497	11,668	4,913	123	18,201
S.L.M.	-	1,397	16,757	25,446	11,622	55,222	-	12,616	45,494	35,436	4,211	97,757
L.M.+	-	17	663	2,234	710	3,624	-	872	6,176	3,838	321	11,207
L.M.	-	45	1,026	2,156	1,956	5,183	-	12,637	26,670	10,049	2,396	51,752
S.G.O.+	-	-	8	110	41	159	-	142	751	339	10	1,242
S.O.O.	-	-	64	157	951	1,172	-	1,664	10,151	3,943	936	16,694
G.O.+	-	-	-	-	6	6	-	-	9	7	-	16
G.O.	-	-	-	24	504	528	-	66	1,107	742	78	1,993
Total	-	14,133	94,754	51,373	21,622	181,882	-	69,174	184,957	78,046	9,681	341,858
Light Spotted:												
G.M.	-	-	-	-	-	-	-	-	-	12	-	12
S.M.	-	181	750	192	197	1,320	-	162	1,427	917	73	2,579
M.	-	4,716	14,012	4,275	6,424	29,427	-	369	3,646	2,791	759	7,565
S.L.M.	-	551	1,881	2,325	4,370	9,127	-	122	1,898	1,376	371	3,767
L.M.	-	10	93	607	2,393	3,103	-	232	1,062	340	806	2,440
Total	-	5,458	16,736	7,399	13,384	42,977	-	885	8,033	5,436	2,009	16,363
Spotted:												
All grades . .	-	10	54	61	605	730	-	22	46	580	364	1,012
Tinged:												
All grades . .	-	-	-	-	19	19	-	-	-	36	22	58
Light Gray:												
All grades . .	-	17	146	151	183	497	-	66	300	725	910	2,001
Gray:												
All grades . .	-	-	-	10	6	16	-	-	82	66	168	316
Below Grade . .												
All grades . .	-	-	10	209	1,275	1,494	-	11	167	110	50	338
All grades . .	-	19,618	111,700	59,203	37,094	227,615 ^{1/}	-	70,158	193,585	84,999	13,204	361,946 ^{1/}
Grade index . .	-	99.3	98.7	95.5	91.3	96.7	-	95.6	94.4	93.2	90.2	94.2
Staple (inches)												
13/16 & shorter.	-	-	-	-	-	-	-	-	-	-	-	-
7/8	-	-	-	113	306	419	-	-	-	-	-	-
29/32	-	-	30	2,651	3,833	6,514	-	-	11	-	-	11
15/16	-	-	249	6,852	9,948	17,049	-	-	49	-	-	49
31/32	-	38	566	4,425	4,715	9,744	-	100	567	38	14	719
1	-	120	478	698	916	2,212	-	1,463	14,235	3,358	402	19,458
1-1/32	-	150	546	359	270	1,325	-	26,527	127,316	57,987	8,523	220,353
1-1/16	-	504	2,924	3,009	4,372	10,809	-	39,960	51,008	23,324	4,245	118,537
1-3/32	-	1,020	4,220	4,459	4,631	14,330	-	2,108	368	292	20	2,788
1-1/8	-	7,099	26,432	22,710	7,379	63,620	-	-	31	-	-	31
1-5/32	-	10,422	69,744	13,124	485	93,775	-	-	-	-	-	-
1-3/16	-	245	5,863	411	6	6,525	-	-	-	-	-	-
1-7/32	-	-	282	54	11	347	-	-	-	-	-	-
1-1/4 & longer .	-	20	366	338	222	946	-	-	-	-	-	-
All staples . .	-	19,618	111,700	59,203	37,094	227,615 ^{1/}	-	70,158	193,585	84,999	13,204	361,946 ^{1/}
Average staple (32nd inches) . .	-	36.4	36.6	34.6	32.5	35.4	-	33.6	33.2	33.2	33.3	33.3

^{1/} As reported by the Bureau of the Census, running bales.

Table 37. -- Grade and staple of upland cotton ginned, during specified periods, by States, 1963-64

OKLAHOMA							SOUTH CAROLINA					
Grade and staple	Prior to Sept. 1	September	October	November	After Nov. 30	Total Crop	Prior to Sept. 1	September	October	November	After Nov. 30	Total Crop
Grade	Bales	Bales	Bales	Bales	Bales	Bales	Bales	Bales	Bales	Bales	Bales	Bales
White:												
G.M.	-	-	-	-	-	-	-	-	74	-	-	74
S.M.	-	874	2,353	583	30	3,840	4,997	17,278	5,311	135	7	27,728
M+.	-	10	9	10	-	29	602	1,132	65	-	-	1,799
M.	-	4,300	14,924	7,674	1,685	28,583	19,085	97,859	45,324	6,254	658	169,180
S.L.M.+	-	162	517	283	175	1,137	579	7,970	2,995	518	45	12,007
S.L.M.	-	3,201	12,317	8,790	4,311	28,619	1,965	52,264	66,130	16,197	1,938	138,494
L.M.+	-	313	606	620	359	1,898	162	5,751	3,539	381	163	9,996
L.M.	-	1,017	2,539	2,241	912	6,709	452	24,370	20,935	5,927	2,041	53,725
S.G.O.+	-	104	221	137	49	511	12	325	183	46	-	566
S.G.O.	-	259	328	319	298	1,204	12	1,744	4,382	1,518	902	8,558
G.O.+	-	22	10	10	10	52	-	-	-	-	-	-
G.O.	-	44	51	87	79	261	-	109	669	434	319	1,531
Total	-	10,306	33,875	20,754	7,908	72,843	27,866	208,702	149,607	31,410	6,073	423,658
Light Spotted:												
G.M.	-	31	-	-	-	31	12	-	-	-	-	12
S.M.	-	4,787	7,513	1,606	855	14,761	324	2,008	892	217	59	3,500
M.	-	21,732	52,207	25,652	28,362	127,953	848	4,698	5,028	1,696	236	12,506
S.L.M.	-	7,824	24,305	15,297	27,059	74,485	174	4,943	5,223	1,537	310	12,187
L.M.	-	762	2,317	1,843	3,834	8,756	46	2,728	2,726	606	333	6,439
Total	-	35,136	86,342	44,398	60,110	225,986	1,404	14,377	13,869	4,056	938	34,644
Spotted:												
G.M.	-	-	-	-	-	-	-	-	-	-	-	-
S.M.	-	193	87	63	187	530	12	42	-	27	13	94
M.	-	1,232	1,944	1,318	5,940	10,434	-	36	59	97	104	296
S.L.M.	-	469	1,272	1,328	6,188	9,257	23	65	74	15	-	177
L.M.	-	60	185	194	1,562	2,002	-	29	202	-	81	312
Total	-	1,954	3,489	2,903	13,877	22,223	35	172	335	139	198	879
Tinged:												
All grades . .	-	20	29	43	1,116	1,208	-	-	11	15	117	143
Yellow Stained:												
All grades . .	-	-	-	-	10	10	-	-	-	-	-	-
Light Gray:												
All grades . .	-	40	308	105	42	495	93	533	2,251	501	451	3,829
Gray:												
All grades . .	-	-	39	11	10	60	12	51	65	21	108	257
Below Grade. . .	-	60	199	182	1,323	1,764	-	46	489	72	257	864
All grades . . .	-	47,516	124,281	68,396	84,396	324,589 1/2	29,410	223,881	166,627	36,214	8,142	464,274 1/2
Grade index. . .	-	95.3	94.9	93.7	90.8	93.7	99.8	96.1	93.8	92.2	86.7	95.1
Staple (inches)												
13/16 & shorter.	-	60	842	59	82	1,043	-	-	-	-	-	-
7/8.	-	2,180	17,041	2,041	2,872	24,134	-	-	11	-	-	11
29/32.	-	11,891	40,757	16,231	16,285	85,164	-	-	-	9	-	9
15/16.	-	19,110	34,104	27,486	47,183	127,883	-	11	31	24	73	139
31/32.	-	6,698	8,536	8,387	11,594	35,215	12	319	941	395	214	1,881
1.	-	3,078	4,608	4,159	3,151	14,996	186	7,433	17,098	5,701	1,589	32,007
1-1/32.	-	1,580	4,447	3,063	1,707	10,797	13,391	133,844	115,763	24,379	5,420	292,797
1-1/16.	-	1,953	7,979	4,670	980	15,582	15,079	79,209	31,809	5,386	754	132,237
1-3/32.	-	810	3,888	1,541	333	6,572	742	3,043	886	296	53	5,020
1-1/8.	-	134	1,454	555	169	2,312	-	11	88	12	39	150
1-5/32.	-	22	411	173	40	646	-	-	-	12	-	12
1-3/16.	-	-	175	31	-	206	-	-	-	-	-	-
1-7/32.	-	-	39	-	-	39	-	-	-	-	-	-
1-1/4 & longer .	-	-	-	-	-	-	-	11	-	-	-	11
All staples. . .	-	47,516	124,281	68,396	84,396	324,589 1/2	29,410	223,881	166,627	36,214	8,142	464,274 1/2
Average staple (32nd inches) .	-	30.3	30.1	30.5	30.1	30.2	33.6	33.3	33.1	33.0	32.8	33.2

1/2 As reported by the Bureau of the Census, running bales.

Table 38. -- Grade and staple of upland cotton ginned, during specified periods, by States, 1963-64

TENNESSEE							TEXAS					
Grade and staple	Prior to Sept. 1	September	October	November	After Nov. 30	Total Crop	Prior to Sept. 1	September	October	November	After Nov. 30	Total Crop
Grade	Bales	Bales	Bales	Bales	Bales	Bales	Bales	Bales	Bales	Bales	Bales	Bales
White:												
G.M.	-	22	40	-	-	62	258	471	1,684	272	56	2,741
S.M.	-	57,672	96,019	3,716	190	157,597	45,171	13,015	32,595	10,231	837	101,849
M.	-	718	1,961	77	-	2,756	1,064	294	847	301	19	2,525
M.	-	88,816	141,266	19,154	879	250,115	188,240	48,682	130,844	128,568	38,769	535,103
S.L.M.+	-	3,655	6,983	993	15	11,646	6,155	2,524	7,756	9,732	2,853	29,020
S.L.M.	-	33,730	75,747	21,270	1,906	132,653	164,467	31,130	53,495	215,213	277,975	742,280
L.M.+	-	1,456	7,840	2,202	105	11,603	6,711	2,033	4,431	32,514	29,884	75,573
L.M.	-	2,847	12,328	6,009	2,807	23,991	31,658	11,705	7,921	33,486	63,945	148,715
S.G.O.+	-	31	391	185	70	677	626	308	225	2,191	2,747	6,097
S.G.O.	-	266	771	1,142	775	2,954	4,182	4,222	1,472	2,141	9,669	21,686
G.O.+	-	-	-	7	5	12	34	55	20	61	63	233
G.O.	-	10	50	160	230	450	1,057	563	162	238	2,874	4,894
Total	-	189,223	343,396	54,915	6,962	594,516	449,623	115,002	241,452	434,948	429,691	1,670,716
Light Spotted:												
G.M.	-	-	-	-	-	-	20	22	38	-	-	80
S.M.	-	1,409	1,101	280	19	2,809	49,687	25,472	47,679	18,021	2,433	143,292
M.	-	7,289	8,767	4,254	407	20,717	296,963	211,060	230,200	255,121	366,520	1,359,864
S.L.M.	-	3,060	4,903	5,130	1,877	14,970	99,027	93,273	66,084	107,140	441,942	807,466
L.M.	-	274	773	1,313	2,191	4,551	17,755	15,687	8,949	11,553	62,006	115,950
Total	-	12,032	15,544	10,977	4,494	43,047	463,452	345,514	352,950	391,835	872,901	2,426,652
Spotted:												
G.M.	-	-	-	-	-	-	9	-	-	-	11	20
S.M.	-	8	11	51	6	76	634	433	686	447	385	2,585
M.	-	75	75	332	61	543	3,596	6,351	6,420	7,098	52,845	76,310
S.L.M.	-	52	59	376	687	1,174	2,766	4,879	4,660	4,867	78,517	95,689
L.M.	-	24	16	212	1,311	1,563	1,388	1,505	1,481	1,345	13,675	19,394
Total	-	159	161	971	2,065	3,356	8,393	13,168	13,247	13,757	145,433	193,998
Tinged:												
All grades . .	-	-	-	34	476	510	65	20	119	69	11,439	11,712
Yellow Stained:												
All grades . .	-	-	-	-	-	-	10	10	-	-	88	108
Light Gray:												
All grades . .	-	152	545	229	37	963	10,220	2,076	1,294	885	4,193	18,668
Gray:												
All grades . .	-	24	75	-	15	114	2,004	730	571	46	747	4,098
Below Grade . .												
	-	-	-	102	1,458	1,560	2,485	3,784	3,755	1,120	13,337	24,481
All grades . . .	-	201,590	359,721	67,228	15,527	644,066 ^{1/}	936,252	480,304	613,388	842,660	1,477,829	4,350,433 ^{1/}
Grade index . .	-	99.5	98.7	94.4	83.0	98.1	95.7	94.3	96.3	94.6	90.9	93.8
Staple (inches)												
13/16 & shorter.	-	-	-	-	-	-	2,361	5,193	5,832	795	1,273	15,454
7/8	-	-	-	-	-	-	35,211	65,036	60,499	14,500	29,834	205,080
29/32	-	-	8	9	-	17	99,122	140,358	182,844	188,886	479,513	1,090,723
15/16	-	-	26	227	150	403	162,019	124,040	171,947	467,799	842,581	1,768,386
31/32	-	194	403	969	1,426	2,992	95,857	36,960	62,490	86,042	74,201	355,550
1	-	887	7,364	10,243	5,833	24,327	136,587	27,136	20,881	17,774	21,402	223,780
1-1/32	-	26,886	100,558	42,088	6,681	176,213	272,955	37,914	11,908	10,073	8,458	341,308
1-1/16	-	153,849	238,532	13,611	1,402	407,394	123,305	27,838	20,918	19,632	9,287	200,980
1-3/32	-	18,814	12,798	81	35	31,728	7,859	4,186	18,543	10,628	3,527	44,743
1-1/8	-	960	32	-	-	992	767	3,987	20,452	16,251	6,824	48,281
1-5/32	-	-	-	-	-	-	66	7,005	33,170	9,750	813	50,804
1-3/16	-	-	-	-	-	-	70	575	3,472	415	107	4,639
1-7/32	-	-	-	-	-	-	73	13	196	30	9	321
1-1/4 & longer	-	-	-	-	-	-	-	63	236	85	-	384
All staples . .	-	201,590	359,721	67,228	15,527	644,066 ^{1/}	936,252	480,304	613,388	842,660	1,477,829	4,350,433 ^{1/}
Average staple (32nd inches)	-	34.0	33.7	33.0	32.5	33.7	31.7	30.3	30.6	30.3	29.8	30.5

^{1/} As reported by the Bureau of the Census, running bales.

Table 39. -- Grade and staple of upland cotton ginned, during specified periods, in Virginia, 1963-64

Grade and staple	Prior to Sept. 1	September	October	November	After Nov. 30	Total Crop
Grade	Bales	Bales	Bales	Bales	Bales	Bales
White:						
G.M.	-	-	-	-	-	-
S.M.	-	19	-	-	-	19
M.+	-	-	-	-	-	-
M.	-	298	753	66	16	1,133
S.L.M.+ . . .	-	112	1,065	116	-	1,293
S.L.M.	-	112	2,419	1,576	90	4,197
L.M.+	-	-	52	410	13	475
L.M.	-	-	39	235	156	430
S.G.O.+	-	-	-	-	-	-
S.G.O.	-	-	-	-	13	13
G.O.+	-	-	-	-	-	-
G.O.	-	-	-	-	-	-
Total	-	541	4,328	2,403	288	7,560
Light Spotted:						
G.M.	-	-	-	-	-	-
S.M.	-	-	13	15	-	28
M.	-	-	207	481	160	848
S.L.M.	-	-	13	425	379	817
L.M.	-	-	-	15	54	69
Total	-	-	233	936	593	1,762
Spotted:						
All grades . .	-	-	-	46	27	73
All grades . . .	-	541	4,561	3,385	908	9,395 ^{1/}
Grade index. . .	-	98.3	95.7	92.8	89.5	94.2
Staple (inches)						
13/16 & shorter.	-	-	-	-	-	-
7/8.	-	-	-	-	-	-
29/32.	-	-	-	-	-	-
15/16.	-	-	-	-	-	-
31/32.	-	-	-	-	-	-
1	-	37	272	86	40	435
1-1/32	-	401	3,078	2,601	687	6,767
1-1/16	-	103	1,211	698	181	2,193
1-3/32	-	-	-	-	-	-
1-1/8.	-	-	-	-	-	-
1-5/32	-	-	-	-	-	-
1-3/16	-	-	-	-	-	-
1-7/32	-	-	-	-	-	-
1-1/4 & longer .	-	-	-	-	-	-
All staples. . .	-	541	4,561	3,385	908	9,395 ^{1/}
Average staple (32nd inches) .	-	33.1	33.2	33.2	33.2	33.2

^{1/} As reported by the Bureau of the Census, running bales.

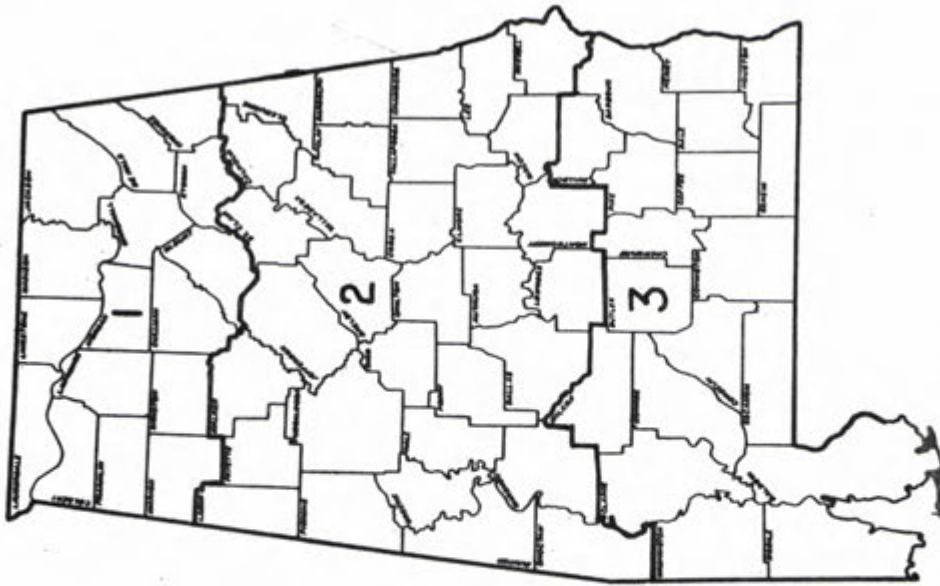
Table 40. -- Grade and staple of upland cotton ginned, by States and districts, 1963-64

ALABAMA

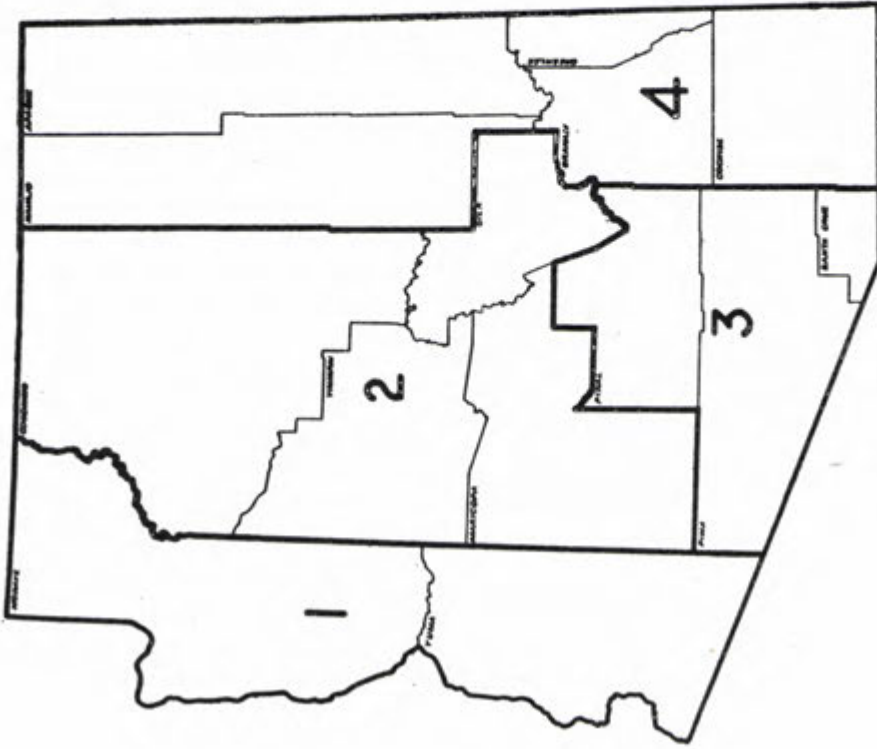
ARIZONA

Grade and staple	Ginned in District			Ginned in the State	Ginned in District				Ginned in the State
	1	2	3		1	2	3	4	
Grade	Bales	Bales	Bales	Bales	Bales	Bales	Bales	Bales	Bales
White:									
G.M.	575	68	-	643	38	135	277	308	758
S.M.	60,146	23,095	5,945	89,186	1,378	5,883	10,040	2,984	20,285
M.+	1,450	414	45	1,909	49	241	738	108	1,136
M.	147,142	114,138	49,342	310,622	8,052	67,526	107,060	19,642	202,280
S.L.M.+	10,636	5,693	1,688	18,017	1,602	2,877	4,757	3,628	12,864
S.L.M.	109,199	68,207	33,639	211,045	31,441	102,440	95,645	13,039	242,565
L.M.+	11,378	6,122	4,494	21,994	958	1,976	2,387	485	5,806
L.M.	37,738	25,734	18,550	82,022	6,974	13,824	9,459	1,257	31,514
S.G.O.+	827	414	314	1,555	19	82	111	31	243
S.G.O.	4,313	3,680	3,640	11,633	2,105	11,246	7,189	640	21,180
G.O.+	16	-	-	16	-	30	19	-	49
G.O.	415	327	591	1,333	600	2,081	2,194	196	5,071
Total	383,835	247,892	118,248	749,975	53,216	208,341	239,876	42,318	543,751
Light Spotted:									
G.M.	11	10	-	21	-	-	-	-	-
S.M.	3,737	4,939	4,521	13,197	324	1,527	4,033	464	6,348
M.	10,464	15,492	24,556	50,512	5,624	29,561	33,528	1,152	69,865
S.L.M.	8,341	6,971	19,596	34,908	8,701	19,360	14,132	465	42,658
L.M.	2,745	2,340	10,753	15,838	4,379	15,442	13,847	534	34,202
Total	25,298	29,752	59,426	114,476	19,028	65,890	65,540	2,615	153,073
Spotted:									
G.M.	-	-	-	-	-	-	-	-	-
S.M.	69	42	94	205	19	68	51	-	138
M.	519	70	267	856	295	1,637	920	27	2,879
S.L.M.	601	96	309	1,006	880	1,458	953	36	3,327
L.M.	145	133	602	880	494	497	525	20	1,536
Total	1,334	341	1,272	2,947	1,688	3,660	2,449	83	7,880
Tinged:									
All grades . . .	77	6	43	126	-	-	-	-	-
Light Gray:									
G.M.	11	-	13	24	-	10	-	17	27
S.M.	235	1,411	155	1,801	892	1,839	882	17	3,630
M.	242	1,729	533	2,504	3,472	4,310	1,336	20	9,138
S.L.M.	82	55	10	147	721	254	39	9	1,023
Total	570	3,195	711	4,476	5,085	6,413	2,257	63	13,818
Gray:									
All grades . . .	33	97	49	179	358	534	30	-	922
Below Grade. . . .	297	279	1,470	2,046	2,599	18,308	17,815	170	38,892
All grades	411,444	281,562	181,219	874,225 <u>1/</u>	81,974	303,146	327,967	45,249	758,336 <u>1/</u>
Grade index. . . .	96.5	96.2	93.4	95.7	90.8	91.4	93.2	96.7	92.4
Staple (inches)									
13/16 & shorter. .	-	-	-	-	-	149	838	-	987
7/8.	25	-	-	25	21	934	2,125	-	3,080
29/32.	30	-	-	30	98	1,065	1,169	-	2,332
15/16.	1,126	320	142	1,588	2,260	10,301	10,692	54	23,307
31/32.	5,174	3,764	1,463	10,401	3,851	20,056	16,113	-	40,020
1	55,424	45,591	23,130	124,145	6,871	24,591	19,997	269	51,728
1-1/32	238,560	148,172	103,127	489,859	41,701	136,530	162,636	49	340,916
1-1/16	108,340	81,218	51,717	241,275	26,911	107,035	104,554	2,706	241,206
1-3/32	2,672	2,477	1,597	6,746	261	2,128	4,353	3,952	10,694
1-1/8.	93	20	43	156	-	134	2,054	16,427	18,615
1-5/32	-	-	-	-	-	132	1,777	19,307	21,216
1-3/16	-	-	-	-	-	80	1,109	2,267	3,456
1-7/32	-	-	-	-	-	-	115	135	250
1-1/4 & longer . .	-	-	-	-	-	11	435	83	529
All staples. . . .	411,444	281,562	181,219	874,225 <u>1/</u>	81,974	303,146	327,967	45,249	758,336 <u>1/</u>
Average staple (32nd inches)	33.1	33.1	33.2	33.1	33.1	33.0	33.1	36.3	33.3

1/ As reported by the Bureau of the Census, running bales.



ALABAMA
DISTRICTS FOR COTTON
QUALITY REPORTS



ARIZONA
DISTRICTS FOR COTTON
QUALITY REPORTS

Table 41. -- Grade and staple of upland cotton ginned, by States and districts, 1963-64

Grade and staple	ARKANSAS					CALIFORNIA		
	Ginned in District				Ginned in the State	Ginned in District		Ginned in the State
	1	2	3	4		1	2	
Grade	Bales	Bales	Bales	Bales	Bales	Bales	Bales	Bales
White:								
G.M.	46	188	31	194	459	21	2	23
S.M.	2,533	46,259	5,118	26,706	80,616	13,173	1,990	15,163
M+.	358	5,084	395	2,050	7,887	885	398	1,283
M.	15,058	258,928	37,309	143,779	455,074	209,901	64,578	274,479
S.L.M+.	1,366	29,991	1,703	10,243	43,303	27,380	8,012	35,392
S.L.M.	8,697	287,876	27,197	165,401	489,171	849,663	88,603	938,266
L.M+.	1,892	71,443	1,431	23,626	98,392	29,867	2,159	32,026
L.M.	1,873	66,141	5,399	46,464	119,877	176,724	12,101	188,825
S.G.O+.	134	5,767	173	1,742	7,816	1,117	30	1,147
S.G.O.	244	8,899	603	7,083	16,829	39,091	4,404	43,495
G.O+.	-	391	-	193	584	11	-	11
G.O.	37	1,857	115	772	2,781	12,461	1,065	13,526
Total	32,238	782,824	79,474	428,253	1,322,789	1,360,294	183,342	1,543,636
Light Spotted:								
G.M.	-	10	-	-	10	57	-	57
S.M.	148	1,656	730	1,798	4,332	717	1,355	2,072
M.	2,358	22,804	10,717	32,271	68,150	10,450	7,608	18,058
S.L.M.	1,513	26,340	6,085	36,642	70,580	18,724	11,192	29,916
L.M.	459	8,180	1,212	11,317	21,168	12,324	9,755	22,079
Total	4,478	58,990	18,744	82,028	164,240	42,272	29,910	72,182
Spotted:								
All grades . . .	102	1,507	221	2,617	4,447	2,187	1,349	3,536
Tinged:								
All grades . . .	17	123	11	122	273	38	-	38
Yellow Stained:								
All grades . . .	-	8	-	-	8	-	-	-
Light Gray:								
G.M.	-	-	-	23	23	-	22	22
S.M.	28	917	277	458	1,680	17,849	3,376	21,225
M.	11	869	102	615	1,597	50,087	9,936	60,023
S.L.M.	-	180	-	127	307	13,837	1,588	15,425
Total	39	1,966	379	1,223	3,607	81,773	14,922	96,695
Gray:								
All grades . . .	7	118	91	106	322	4,699	404	5,103
Below Grade . . .	68	3,207	185	1,754	5,214	8,426	5,271	13,697
All grades	36,949	848,743	99,105	516,103	1,500,900 ^{1/}	1,499,689	235,198	1,734,887 ^{1/}
Grade index. . . .	96.2	94.8	96.0	94.3	94.8	92.7	93.3	92.8
Staple (inches)								
13/16 & shorter. .	-	-	-	-	-	-	11	11
7/8.	-	16	-	-	16	-	155	155
29/32.	42	18	-	-	60	-	1,147	1,147
15/16.	147	1,028	54	99	1,328	19	9,642	9,661
31/32.	270	2,754	211	711	3,946	508	9,344	9,852
1	2,050	30,091	3,122	15,726	50,989	10,699	23,582	34,281
1-1/32	10,877	213,323	29,779	135,987	389,966	84,357	83,405	167,762
1-1/16	21,479	516,528	58,036	307,965	904,008	919,425	107,353	1,026,778
1-3/32	1,987	81,913	7,345	53,462	144,707	477,871	467	478,338
1-1/8.	87	3,023	558	2,122	5,790	6,682	-	6,682
1-5/32	10	49	-	21	80	64	23	87
1-3/16	-	-	-	10	10	64	36	100
1-7/32	-	-	-	-	-	-	21	21
1-1/4 & longer . .	-	-	-	-	-	-	12	12
All staples. . . .	36,949	848,743	99,105	516,103	1,500,900 ^{1/}	1,499,689	235,198	1,734,887 ^{1/}
Average staple (32nd inches) . .	33.6	33.8	33.7	33.8	33.8	34.3	33.1	34.1

^{1/} As reported by the Bureau of the Census, running bales.



**CALIFORNIA
DISTRICTS FOR COTTON
QUALITY REPORTS**



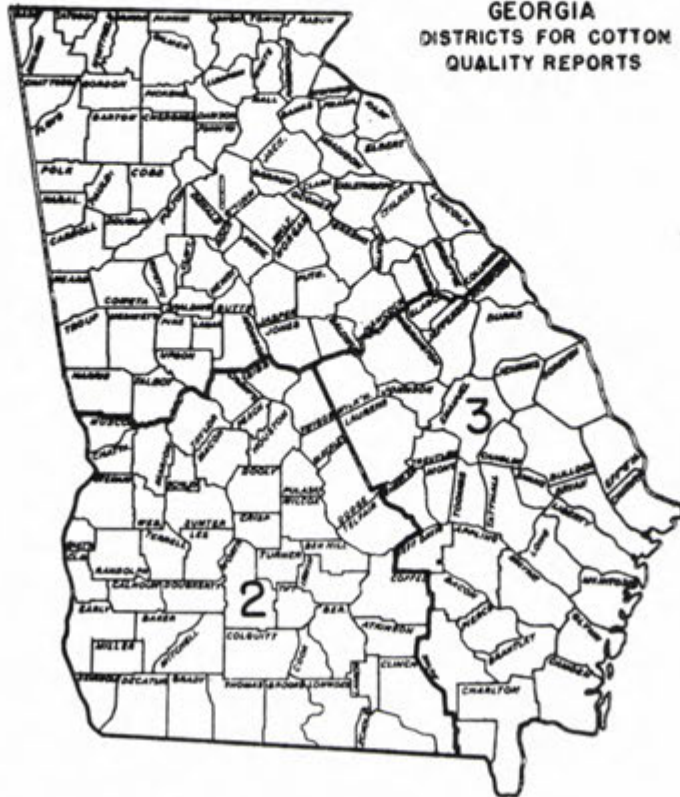
**ARKANSAS
DISTRICTS FOR COTTON
QUALITY REPORTS**

Table 42. -- Grade and staple of upland cotton ginned, by States and districts, 1963-64

Grade and staple	GEORGIA				LOUISIANA				
	Ginned in District			Ginned in the State	Ginned in District				Ginned in the State
	1	2	3		1	2	3	4	
	<u>Grade</u>	<u>Bales</u>	<u>Bales</u>	<u>Bales</u>	<u>Bales</u>	<u>Bales</u>	<u>Bales</u>	<u>Bales</u>	<u>Bales</u>
White:									
G.M.		9	7	34	50	85	-	-	85
S.M.		9,813	8,916	6,416	25,145	11,899	63	15,769	18,785
M.+		631	810	252	1,693	334	-	381	382
M.		63,591	70,770	46,418	180,779	42,998	84	115,441	40,608
S.L.M.+		3,479	7,386	2,833	13,698	1,158	22	2,772	702
S.L.M.		21,222	90,550	40,793	152,565	54,536	369	163,534	16,358
L.M.+		2,708	15,668	4,555	22,931	1,417	20	4,569	65
L.M.		7,302	63,274	23,678	94,254	9,951	29	40,190	4,087
S.G.O.+		491	1,283	173	1,947	22	-	298	-
S.G.O.		1,088	8,826	4,322	14,236	1,287	-	5,361	715
G.O.+		11	38	-	49	-	-	18	-
G.O.		178	986	594	1,758	288	-	562	82
Total		110,523	268,514	130,068	509,105	123,975	587	348,895	81,784
Light Spotted:									
G.M.		-	-	-	-	-	-	-	-
S.M.		1,721	2,874	1,654	6,249	2,295	14	222	2,765
M.		7,285	12,439	9,449	29,173	16,323	147	21,138	19,723
S.L.M.		5,079	16,462	12,548	34,089	10,165	162	21,588	7,210
L.M.		1,553	8,504	7,014	17,071	1,954	5	5,731	1,509
Total		15,638	40,279	30,665	86,582	30,737	328	48,679	31,207
Spotted:									
All grades . . .		2,696	1,246	494	4,436	345	3	992	411
Tinged:									
All grades . . .		459	24	-	483	38	-	27	-
Yellow Stained:									
All grades . . .		20	-	-	20	-	-	-	-
Light Gray:									
All grades . . .		351	801	793	1,945	735	3	760	4,214
Gray:									
All grades . . .		18	47	52	117	71	-	26	200
Below Grade. . .		516	620	546	1,682	327	-	587	281
All grades . . .		130,221	311,531	162,618	604,370 ^{1/}	156,228	921	399,966	118,097
Grade index. . .		96.5	92.5	93.3	93.6	95.5	94.6	94.5	97.4
Staple (inches)									
13/16 & shorter. .		-	-	-	-	-	-	-	-
7/8.		-	20	-	20	-	-	-	-
29/32.		69	49	24	142	-	-	16	16
15/16.		610	487	176	1,273	42	-	77	119
31/32.		3,376	3,969	2,448	9,793	30	-	236	8
1		24,168	47,422	20,788	92,378	1,936	3	5,933	925
1-1/32		68,614	208,958	111,637	389,209	48,952	157	104,852	25,696
1-1/16		30,605	49,777	27,017	107,399	103,398	705	273,380	86,741
1-3/32		2,561	830	528	3,919	1,870	56	15,382	4,717
1-1/8.		209	19	-	228	-	-	79	10
1-5/32		-	-	-	-	-	-	-	-
1-3/16		-	-	-	-	-	-	11	-
1-7/32		-	-	-	-	-	-	-	11
1-1/4 & longer . .		9	-	-	9	-	-	-	-
All staples. . . .		130,221	311,531	162,618	604,370 ^{1/}	156,228	921	399,966	118,097
Average staple (32nd inches) . .		33.0	33.0	33.0	33.0	33.7	33.9	33.7	33.8

^{1/} As reported by the Bureau of the Census, running bales.

GEORGIA
DISTRICTS FOR COTTON
QUALITY REPORTS



LOUISIANA
DISTRICTS FOR COTTON
QUALITY REPORTS



Table 43. -- Grade and staple of upland cotton ginned, by States and districts, 1963-64

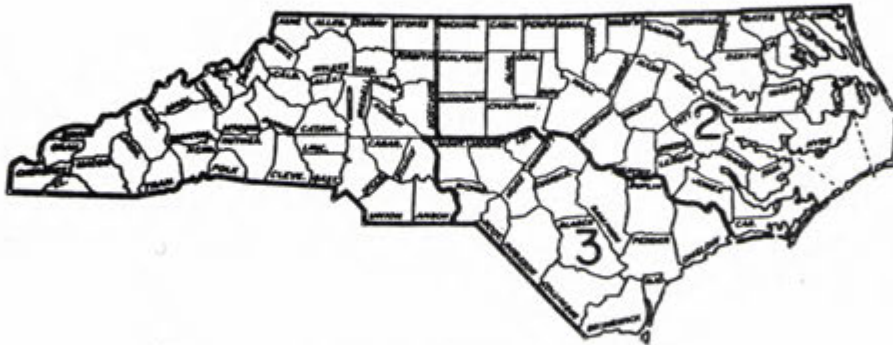
Grade and staple	MISSISSIPPI					NEW MEXICO		
	Ginned in District				Ginned in the State	Ginned in District		Ginned in the State
	1	2	3	4		1	2	
<u>Grade</u>	<u>Bales</u>	<u>Bales</u>	<u>Bales</u>	<u>Bales</u>	<u>Bales</u>	<u>Bales</u>	<u>Bales</u>	<u>Bales</u>
White:								
G.M.	489	58	92	85	724	1,106	801	1,907
S.M.	155,904	84,791	27,487	12,282	280,464	9,273	11,528	20,801
M.+	16,584	1,483	1,871	754	20,692	244	355	599
M.	453,075	182,952	106,372	44,398	786,797	37,993	45,398	83,391
S.L.M.+	29,017	5,020	5,260	1,792	41,089	8,554	736	9,290
S.L.M.	395,071	98,439	38,789	7,264	539,563	29,842	25,380	55,222
L.M.+	25,165	6,359	2,350	215	34,089	1,619	2,005	3,624
L.M.	76,784	28,473	7,925	1,419	114,601	2,717	2,466	5,183
S.G.O.+	1,653	521	100	8	2,282	60	99	159
S.G.O.	10,546	4,480	1,467	192	16,685	825	347	1,172
G.O.+	63	12	-	-	75	-	6	6
G.O.	1,643	742	147	41	2,573	372	156	528
Total	1,165,994	413,330	191,860	68,450	1,839,634	92,605	89,277	181,882
Light Spotted:								
G.M.	-	-	-	11	11	-	-	-
S.M.	5,450	3,323	3,726	1,205	13,704	336	984	1,320
M.	93,658	16,515	11,051	4,525	125,749	1,274	28,153	29,427
S.L.M.	74,891	11,241	3,850	867	90,849	801	8,326	9,127
L.M.	17,847	3,528	991	148	22,514	244	2,859	3,103
Total	191,846	34,607	19,618	6,756	252,827	2,655	40,322	42,977
Spotted:								
All grades . . .	2,576	1,134	113	50	3,873	73	657	730
Tinged:								
All grades . . .	50	19	-	-	69	-	19	19
Light Gray:								
All grades . . .	2,967	894	609	57	4,517	275	222	497
Gray:								
All grades . . .	223	46	10	-	279	10	6	16
Below Grade. . .	2,037	362	52	-	2,451	397	1,097	1,494
All grades . . .	1,365,693	450,382	212,262	75,313	2,103,650 ^{1/}	96,015	131,600	227,615 ^{1/}
Grade index. . .	96.2	97.4	98.1	99.3	96.8	97.0	96.5	96.7
<u>Staple</u> <u>(inches)</u>								
13/16 & shorter. .	-	-	-	-	-	-	-	-
7/8.	8	9	-	-	17	-	419	419
29/32.	40	-	30	12	82	-	6,514	6,514
15/16.	162	103	244	31	540	-	17,049	17,049
31/32.	594	938	809	211	2,552	-	9,744	9,744
1	7,960	10,686	8,421	2,724	29,791	51	2,161	2,212
1-1/32	177,582	109,606	57,571	20,285	365,044	52	1,273	1,325
1-1/16	926,126	299,304	123,801	46,914	1,396,145	2,981	7,828	10,809
1-3/32	239,198	29,072	21,077	5,136	294,483	4,594	9,736	14,330
1-1/8.	13,195	641	290	-	14,126	27,586	36,034	63,620
1-5/32	756	23	19	-	798	53,696	40,079	93,775
1-3/16	72	-	-	-	72	6,012	513	6,525
1-7/32	-	-	-	-	-	304	43	347
1-1/4 & longer . .	-	-	-	-	-	739	207	946
All staples. . . .	1,365,693	450,382	212,262	75,313	2,103,650 ^{1/}	96,015	131,600	227,615 ^{1/}
Average staple (32nd inches) . .	34.1	33.8	33.7	33.7	33.9	36.6	34.5	35.4

^{1/} As reported by the Bureau of the Census, running bales.

Table 44. -- Grade and staple of upland cotton ginned, by States and districts, 1963-64

Grade and staple	NORTH CAROLINA				OKLAHOMA			
	Ginned in District			Ginned in the State	Ginned in District			Ginned in the State
	1	2	3		1	2	3	
<u>Grade</u>	<u>Bales</u>	<u>Bales</u>	<u>Bales</u>	<u>Bales</u>	<u>Bales</u>	<u>Bales</u>	<u>Bales</u>	<u>Bales</u>
White:								
G.M.	-	-	8	8	-	-	-	-
S.M.	8,133	5,024	1,461	14,618	2,816	195	829	3,840
M+.	-	20	-	20	19	-	10	29
M.	27,100	67,242	34,008	128,350	20,155	3,369	5,059	28,583
S.L.M+.	1,916	12,227	4,058	18,201	717	303	117	1,137
S.L.M.	7,282	51,897	38,578	97,757	18,944	5,477	4,198	28,619
L.M+.	450	7,185	3,572	11,207	1,112	470	316	1,898
L.M.	929	20,406	30,417	51,752	3,718	1,348	1,643	6,709
S.G.O+.	30	879	333	1,242	214	161	136	511
S.G.O.	246	5,576	10,872	16,694	606	400	198	1,204
G.O+.	7	-	9	16	30	-	22	52
G.O.	-	689	1,304	1,993	150	89	22	261
Total	46,093	171,145	124,620	341,858	48,481	11,812	12,550	72,843
Light Spotted:								
G.M.	12	-	-	12	21	-	10	31
S.M.	1,090	1,008	481	2,579	12,445	515	1,801	14,761
M.	2,319	2,849	2,397	7,565	103,086	7,158	17,709	127,953
S.L.M.	463	1,544	1,760	3,767	60,289	6,331	7,865	74,485
L.M.	189	948	1,303	2,440	6,922	1,007	827	8,756
Total	4,073	6,349	5,941	16,363	182,763	15,011	28,212	225,986
Spotted:								
G.M.	-	-	-	-	-	-	-	-
S.M.	76	-	-	76	530	-	-	530
M.	402	51	41	494	9,855	118	461	10,434
S.L.M.	80	87	48	215	8,713	140	404	9,257
L.M.	37	135	55	227	1,907	72	23	2,002
Total	595	273	144	1,012	21,005	330	888	22,223
Tinged:								
All grades . . .	44	14	-	58	1,171	9	28	1,208
Yellow Stained:								
All grades . . .	-	-	-	-	10	-	-	10
Light Gray:								
All grades . . .	52	1,448	501	2,001	481	14	-	495
Gray:								
All grades . . .	12	192	112	316	49	-	11	60
Below Grade. . .	-	49	289	338	1,515	126	123	1,764
All grades . . .	50,869	179,470	131,607	361,946 ^{1/}	255,475	27,302	41,812	324,589 ^{1/}
Grade index. . .	98.8	94.8	91.6	94.2	93.6	92.9	94.6	93.7
<u>Staple</u> (inches)								
13/16 & shorter. .	-	-	-	-	713	20	310	1,043
7/8.	-	-	-	-	16,808	1,104	6,222	24,134
29/32.	-	11	-	11	64,975	6,300	13,889	85,164
15/16.	-	22	27	49	107,602	9,204	11,077	127,883
31/32.	51	445	223	719	30,563	2,720	1,932	35,215
1.	3,864	8,713	6,881	19,458	12,108	2,114	774	14,996
1-1/32.	28,883	111,317	80,153	220,353	6,770	2,363	1,664	10,797
1-1/16.	17,089	58,423	43,025	118,537	8,312	2,759	4,511	15,582
1-3/32.	951	539	1,298	2,788	4,519	686	1,367	6,572
1-1/8.	31	-	-	31	2,236	10	66	2,312
1-5/32.	-	-	-	-	624	22	-	646
1-3/16.	-	-	-	-	206	-	-	206
1-7/32.	-	-	-	-	39	-	-	39
1-1/4 & longer . .	-	-	-	-	-	-	-	-
All staples. . .	50,869	179,470	131,607	361,946 ^{1/}	255,475	27,302	41,812	324,589 ^{1/}
Average staple (32nd inches) . .	33.3	33.3	33.3	33.3	30.2	30.7	30.1	30.2

^{1/} As reported by the Bureau of the Census, running bales.



**NORTH CAROLINA
DISTRICTS FOR COTTON
QUALITY REPORTS**



**OKLAHOMA
DISTRICTS FOR COTTON
QUALITY REPORTS**

Table 45. -- Grade and staple of upland cotton ginned, by States and districts, 1963-64

Grade and staple	SOUTH CAROLINA				TENNESSEE		
	Ginned in District			Ginned in the State	Ginned in District		Ginned in the State
	1	2	3		1	2	
Grade	Bales	Bales	Bales	Bales	Bales	Bales	Bales
White:							
G.M.	74	-	-	74	40	22	62
S.M.	9,969	11,773	5,986	27,728	140,847	16,750	157,597
M.+	183	934	682	1,799	2,636	120	2,756
M.	33,555	86,229	49,396	169,180	239,912	10,203	250,115
S.L.M.+	1,352	6,728	3,927	12,007	9,706	1,940	11,646
S.L.M.	14,591	83,689	40,214	138,494	124,845	7,808	132,653
L.M.+	602	5,092	4,302	9,996	10,464	1,139	11,603
L.M.	974	35,222	17,529	53,725	22,520	1,471	23,991
S.G.O.+	11	304	251	566	522	155	677
S.G.O.	80	6,599	1,879	8,558	2,909	45	2,954
G.O.+	-	-	-	-	12	-	12
G.O.	-	1,283	248	1,531	450	-	450
Total	61,391	237,853	124,414	423,658	554,863	39,653	594,516
Light Spotted:							
G.M.	-	12	-	12	-	-	-
S.M.	1,253	1,220	1,027	3,500	2,714	95	2,809
M.	4,402	4,959	3,145	12,506	20,022	695	20,717
S.L.M.	1,275	6,575	4,337	12,187	14,361	609	14,970
L.M.	160	3,942	2,337	6,439	4,319	232	4,551
Total	7,090	16,708	10,846	34,644	41,416	1,631	43,047
Spotted:							
All grades . . .	235	428	216	879	3,279	77	3,356
Tinged:							
All grades . . .	99	33	11	143	464	46	510
Light Gray:							
All grades . . .	47	3,261	521	3,829	955	8	963
Gray:							
All grades . . .	-	235	22	257	114	-	114
Below Grade. . .	26	566	272	864	1,549	11	1,560
All grades . . .	68,888	259,084	136,302	464,274 $\frac{1}{2}$	602,640	41,426	644,066 $\frac{1}{2}$
Grade index. . .	98.5	94.3	94.8	95.1	98.0	99.1	98.1
Staple (inches)							
13/16 & shorter. .	-	-	-	-	-	-	-
7/8.	11	-	-	11	-	-	-
29/32.	-	9	-	9	9	8	17
15/16.	21	84	34	139	387	16	403
31/32.	502	1,189	190	1,881	2,806	186	2,992
1.	8,892	18,067	5,048	32,007	21,951	2,376	24,327
1-1/32	45,070	168,062	79,665	292,797	158,247	17,966	176,213
1-1/16	13,354	68,980	49,903	132,237	387,203	20,191	407,394
1-3/32	1,038	2,558	1,424	5,020	31,053	675	31,728
1-1/8.	-	112	38	150	984	8	992
1-5/32	-	12	-	12	-	-	-
1-3/16	-	-	-	-	-	-	-
1-7/32	-	-	-	-	-	-	-
1-1/4 & longer . .	-	11	-	11	-	-	-
All staples. . . .	68,888	259,084	136,302	464,274 $\frac{1}{2}$	602,640	41,426	644,066 $\frac{1}{2}$
Average staple (32nd inches) . .	33.1	33.2	33.3	33.2	33.7	33.5	33.7

$\frac{1}{2}$ As reported by the Bureau of the Census, running bales.

**SOUTH CAROLINA
DISTRICTS FOR COTTON
QUALITY REPORTS**



**TENNESSEE
DISTRICTS FOR COTTON
QUALITY REPORTS**



Table 46. -- Grade and staple of upland cotton ginned in Texas, by districts, 1963-64

Grade and staple	Ginned in District										Ginned in the State	
	1	2	3	4	5	6	7	8	9	10		
Grade	Bales	Bales	Bales	Bales	Bales	Bales	Bales	Bales	Bales	Bales	Bales	Bales
White:												
G.M.	10	37	-	-	11	2,436	-	30	36	181		2,741
S.M.	20,817	12,976	83	2,580	4,822	20,184	269	8,487	10,046	21,585		101,849
M.+	125	107	-	27	103	1,110	22	100	801	130		2,525
M.	208,996	49,770	124	30,748	24,026	58,688	998	43,777	44,780	73,196		535,103
S.L.M.+	11,350	1,309	-	446	732	8,734	72	1,573	2,753	2,051		29,020
S.L.M.	463,425	31,605	169	12,394	24,562	49,310	563	25,617	50,499	84,136		742,280
L.M.+	61,460	3,278	32	681	840	2,247	32	1,566	3,589	1,848		75,573
L.M.	89,335	9,086	70	5,918	6,857	4,421	62	6,198	13,656	13,112		148,715
S.G.O.+	4,453	578	-	258	76	132	-	334	210	56		6,097
S.G.O.	9,348	1,291	39	3,300	1,691	1,562	10	1,174	1,524	1,747		21,686
G.O.+	124	19	14	36	10	11	-	10	9	-		233
G.O.	1,892	148	-	460	82	1,096	-	183	357	676		4,894
Total	871,335	110,204	531	56,848	63,812	149,931	2,028	89,049	128,260	198,718		1,670,716
Light Spotted:												
G.M.	19	9	-	-	-	23	-	-	9	20		80
S.M.	32,513	46,631	1,009	25,449	2,929	3,368	1,553	15,933	5,722	8,185		143,292
M.	555,690	262,554	6,578	290,615	24,609	30,662	14,963	84,330	43,295	46,568		1,359,864
S.L.M.	459,370	129,283	3,101	97,150	15,929	11,230	6,626	23,376	24,516	36,885		807,466
L.M.	55,128	15,634	356	11,206	4,596	7,401	970	4,113	5,811	10,735		115,950
Total	1,102,720	454,111	11,044	424,420	48,063	52,684	24,112	127,752	79,353	102,393		2,426,652
Spotted:												
G.M.	-	-	-	-	-	11	-	-	-	9		20
S.M.	449	1,079	23	491	105	70	10	126	73	159		2,585
M.	41,859	21,791	314	6,452	957	1,089	1,215	1,183	239	1,211		76,310
S.L.M.	64,988	19,093	39	5,032	611	1,204	1,192	1,581	561	1,388		95,689
L.M.	10,255	3,951	25	1,417	363	1,207	222	399	206	1,349		19,394
Total	117,551	45,914	401	13,392	2,036	3,581	2,639	3,289	1,079	4,116		193,998
Tinged:												
All grades . .	9,731	1,540	-	169	-	177	64	10	-	21		11,712
Yellow Stained:												
All grades . .	70	18	-	-	10	-	-	10	-	-		108
Light Gray:												
All grades . .	3,818	901	-	465	1,443	1,042	180	1,656	1,958	7,205		18,568
Gray:												
All grades . .	700	155	-	447	536	32	19	386	264	1,559		4,098
Below Grade. . .	5,821	1,276	10	3,229	2,626	7,339	111	932	822	2,315		24,481
All grades . . .	2,111,746	614,119	11,986	498,970	118,526	214,786	29,153	223,084	211,736	316,327		4,350,433 1/
Grade Index. . .	92.9	94.4	94.5	94.6	93.4	94.8	93.8	95.8	94.6	94.7		93.8
Staple												
(inches)												
13/16 & shorter.	1,437	2,960	1,200	6,354	143	46	1,473	1,498	60	283		15,454
7/8.	42,449	41,526	4,252	95,670	2,417	81	7,868	9,171	245	1,401		205,080
29/32.	620,378	220,876	4,700	189,697	6,108	322	13,404	30,522	1,392	3,324		1,090,723
15/16.	1,211,251	290,521	1,630	151,553	10,152	6,070	4,883	70,727	10,657	10,942		1,768,386
31/32.	177,476	40,295	143	31,628	11,451	11,612	592	40,088	21,497	20,768		355,550
1	34,252	8,724	44	11,259	18,735	14,863	315	27,289	40,436	67,863		223,780
1-1/32	8,956	3,384	7	8,536	37,923	13,730	270	27,548	85,469	155,485		341,308
1-1/16	5,353	3,317	10	4,024	28,375	43,022	159	14,924	49,022	52,774		200,980
1-3/32	4,011	1,636	-	239	3,071	28,871	30	1,135	2,853	2,897		44,743
1-1/8.	4,902	752	-	10	132	41,699	110	162	77	437		48,281
1-5/32	1,127	89	-	-	8	49,482	40	20	-	38		50,804
1-3/16	82	10	-	-	11	4,457	9	-	28	42		4,639
1-7/32	-	-	-	-	-	248	-	-	-	73		321
1-1/4 & longer .	72	29	-	-	-	283	-	-	-	-		384
All staples. . .	2,111,746	614,119	11,986	498,970	118,526	214,786	29,153	223,084	211,736	316,327		4,350,433 1/
Average staple												
(32nd inches) .	29.8	29.6	28.5	29.4	32.4	34.8	28.9	30.8	32.7	32.7		30.5

1/ As reported by the Bureau of the Census, running bales.

