

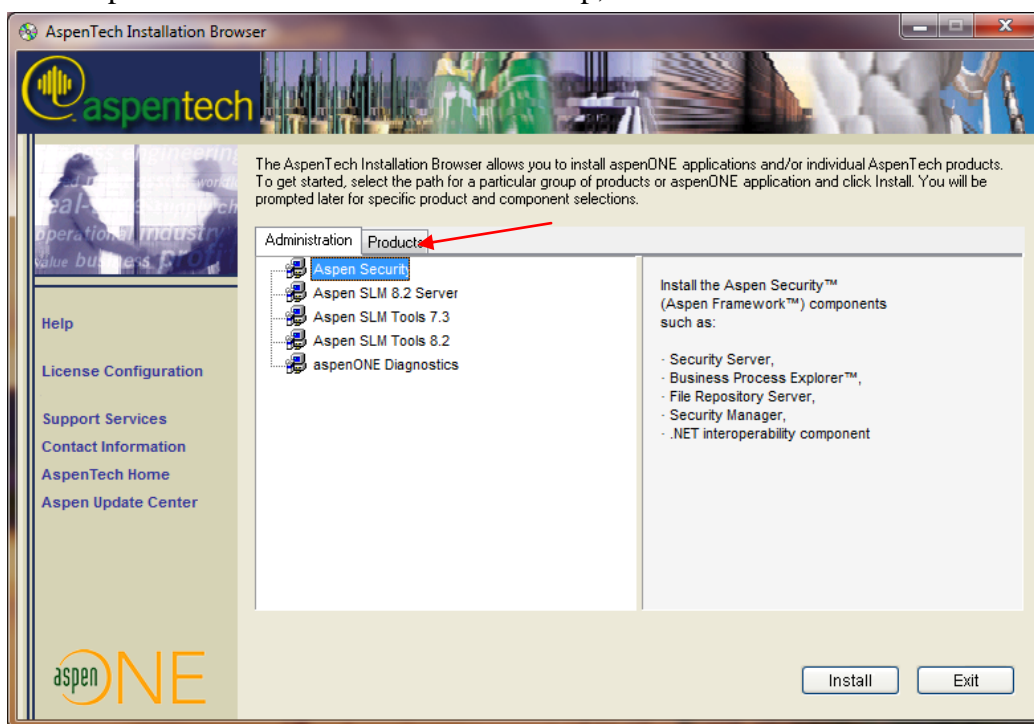
AspenPlus Installation on Individual Computers

Department of Chemical Engineering

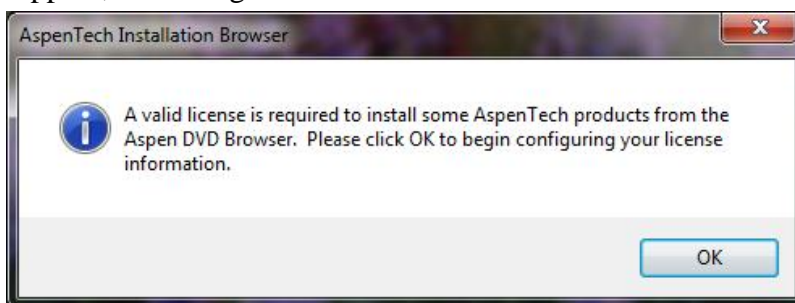
Texas Tech University.

AspenPLUS 7.1 runs on Windows XP (SP3), Windows Vista, and Windows 7. (If you are installing the software on Vista or Windows 7, please see [these instructions](#).) The software only runs on 32-bit operating systems. It will not run on a 64-bit operating system, even as a 32-bit application. It runs only on Windows.

1. Obtain the AspenONE 7.1 DVD installation disk from the Department IT specialists (che.it@ttu.edu).
 - a. Bring a blank DVD to the specialist and let him provide you a pre-burned copy of the software in return.
2. Insert the disk into your computer's DVD drive. It should start the installation process automatically.
3. After the AspenTech Installation browser loads up, select the "Products" tab.



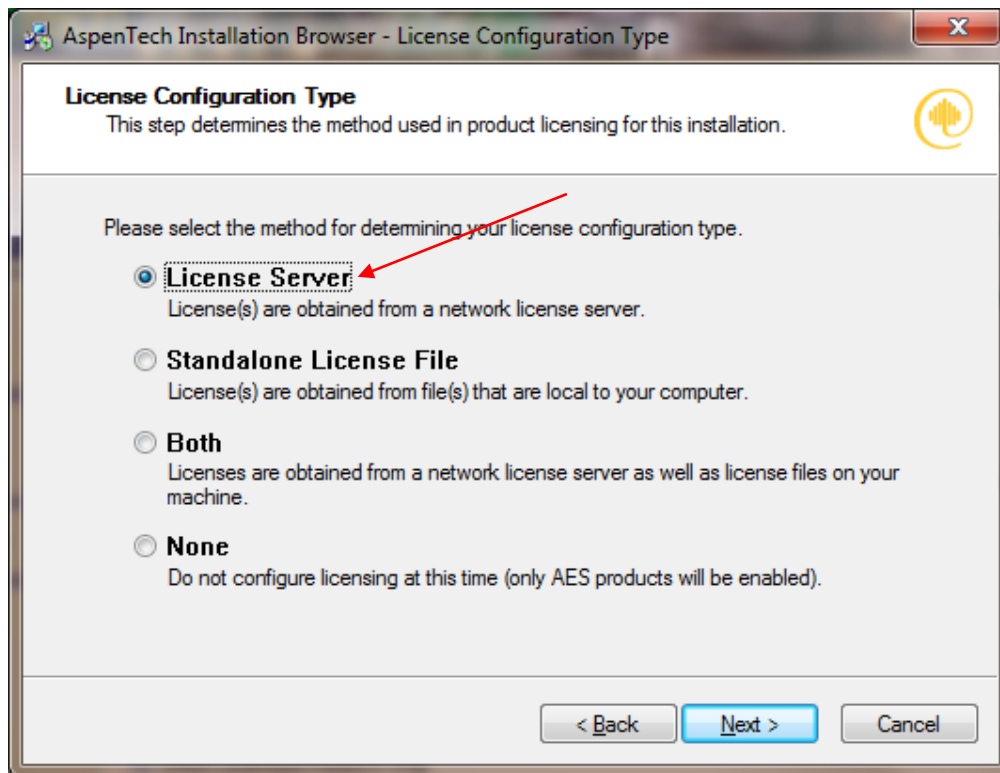
4. A pop-up will appear, indicating the need for a valid license. Select "OK".



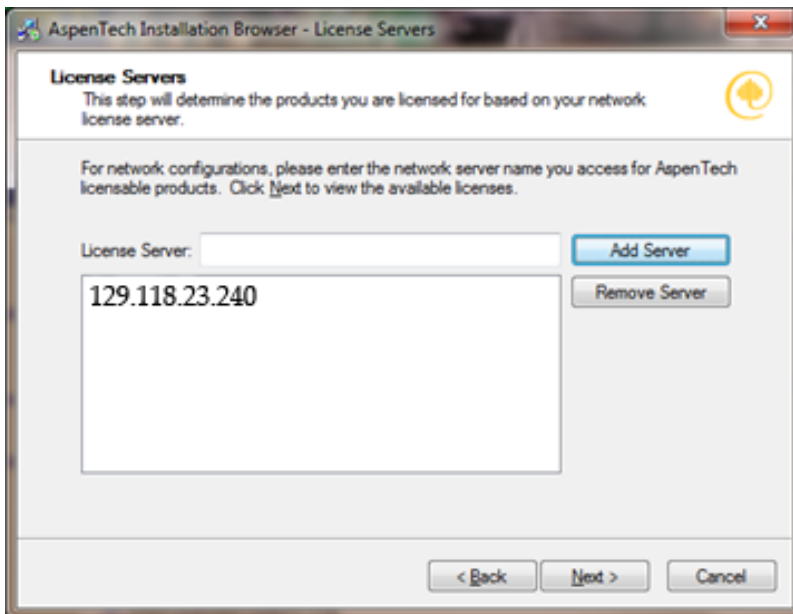
5. The Installer Configuration Wizard will pop up. Select “Next”.



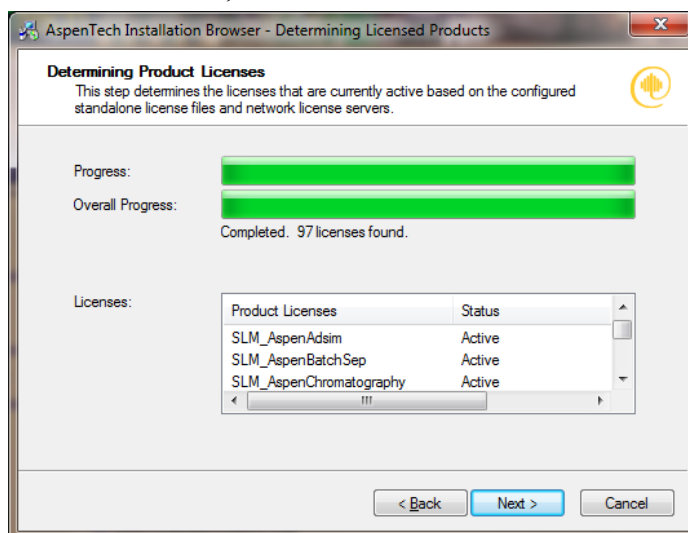
6. Select “License Server” for the license configuration type. Click on “Next”.



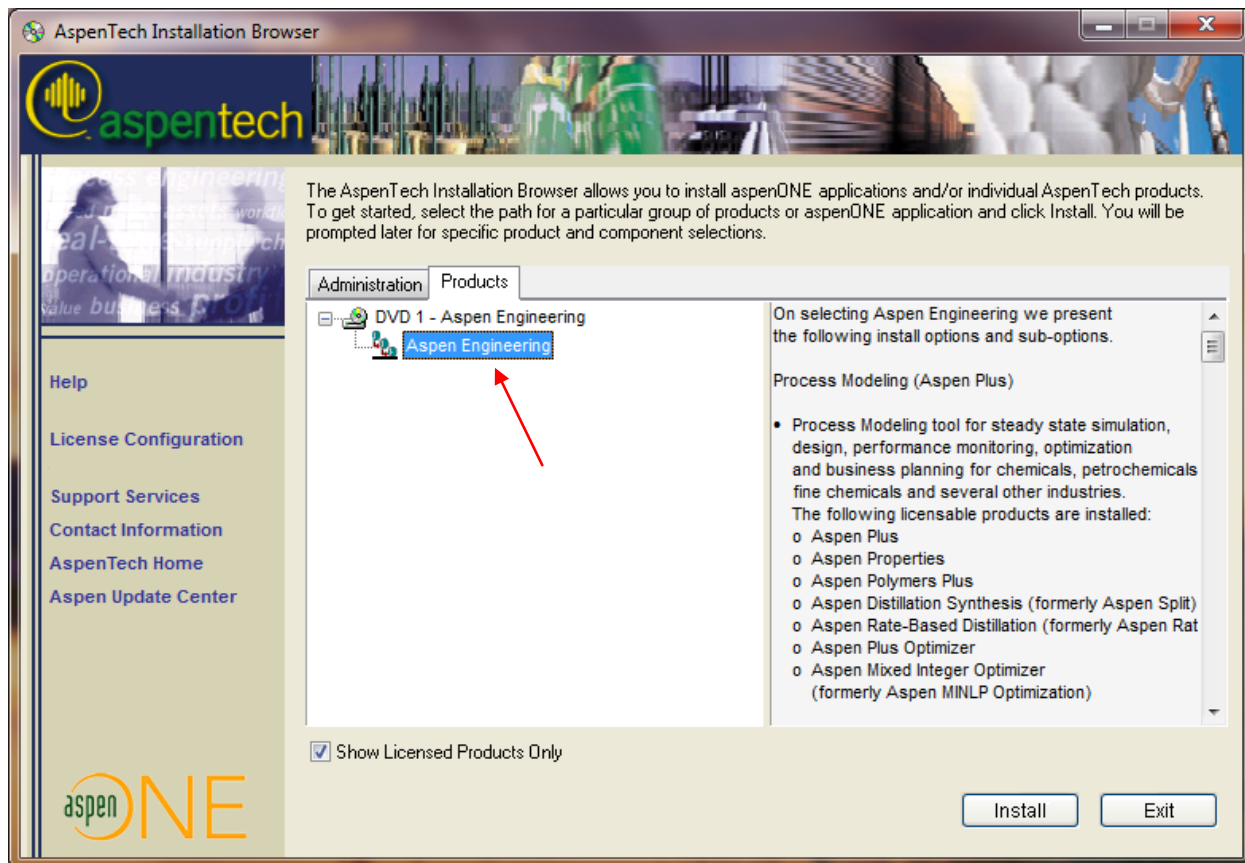
7. The “License Servers” window will pop up. Enter **129.118.23.240** in to the license server field. Click “Add Server”. Click “Next”.



- a. Note: your computer must be able to “see” the Chemical Engineering license server in order for AspenPLUS to run. The license supports 50 simultaneous users, regardless of location.
 - b. If you connect to TTUnet on campus, either wirelessly or with a wired connection, your computer will automatically find the server.
 - c. If you connect from off-campus through a third-party Internet Service Provider, you must set up a *Virtual Private Network (VPN)*, so that you can tunnel through the TTU firewall.
 - d. Setting up a VPN only requires your Eraider username and password. The details on setting up a VPN to TTUnet are given on the Information Technology website at <http://www.depts.ttu.edu/helpcentral/directions/VPN/index.php>.
8. The “Determining Product Licenses” window will pop up. When the installer completes its survey of the licenses on the server, click “Next”.



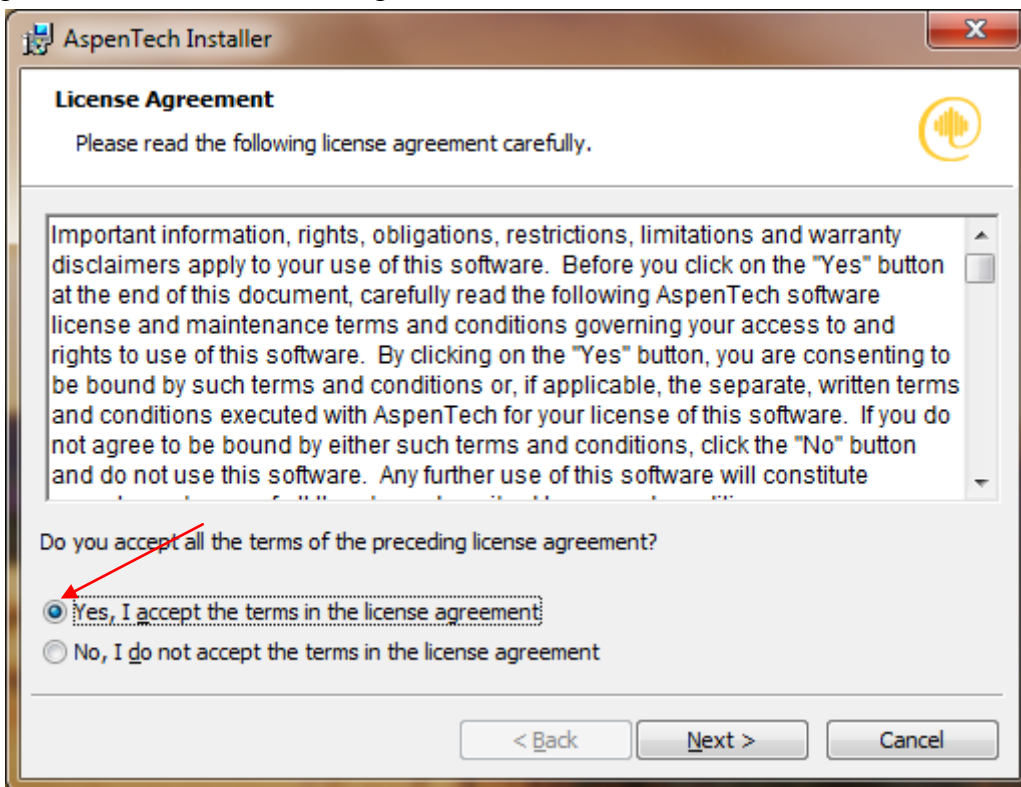
9. You will return to the Installation Browser, which will display the ASPEN Engineering Suite. Select Aspen Engineering and click on “Install”



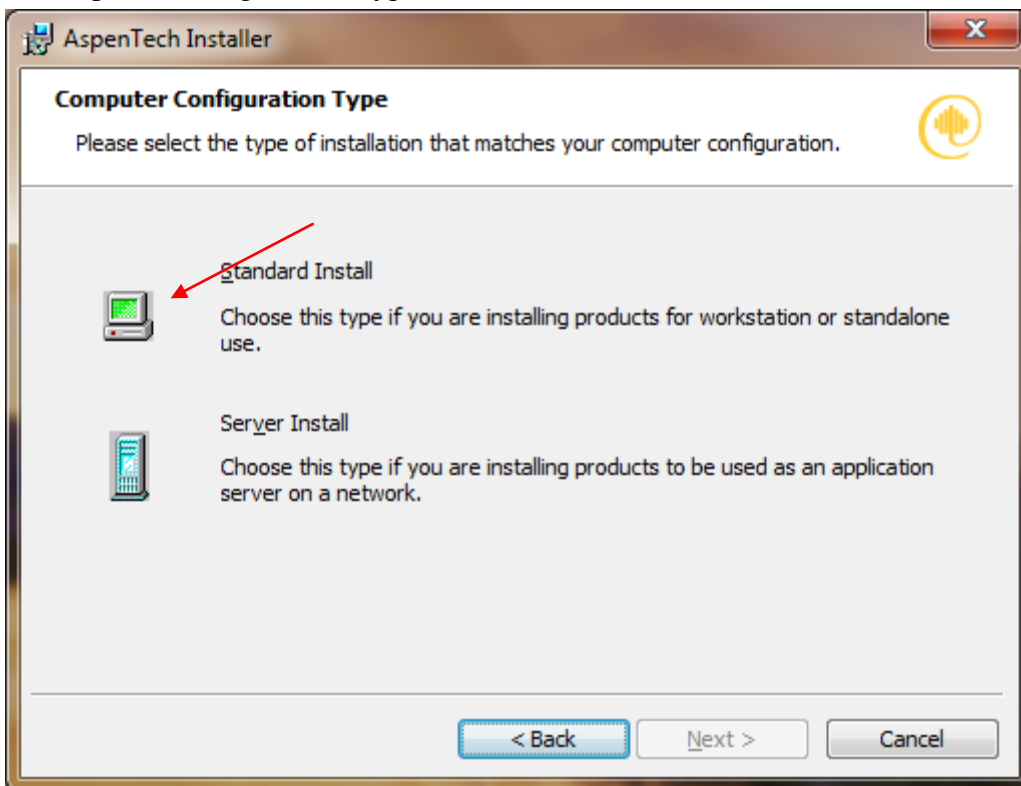
10. The ASPEN Engineering V7.1 Setup program will open. Click “Next”.



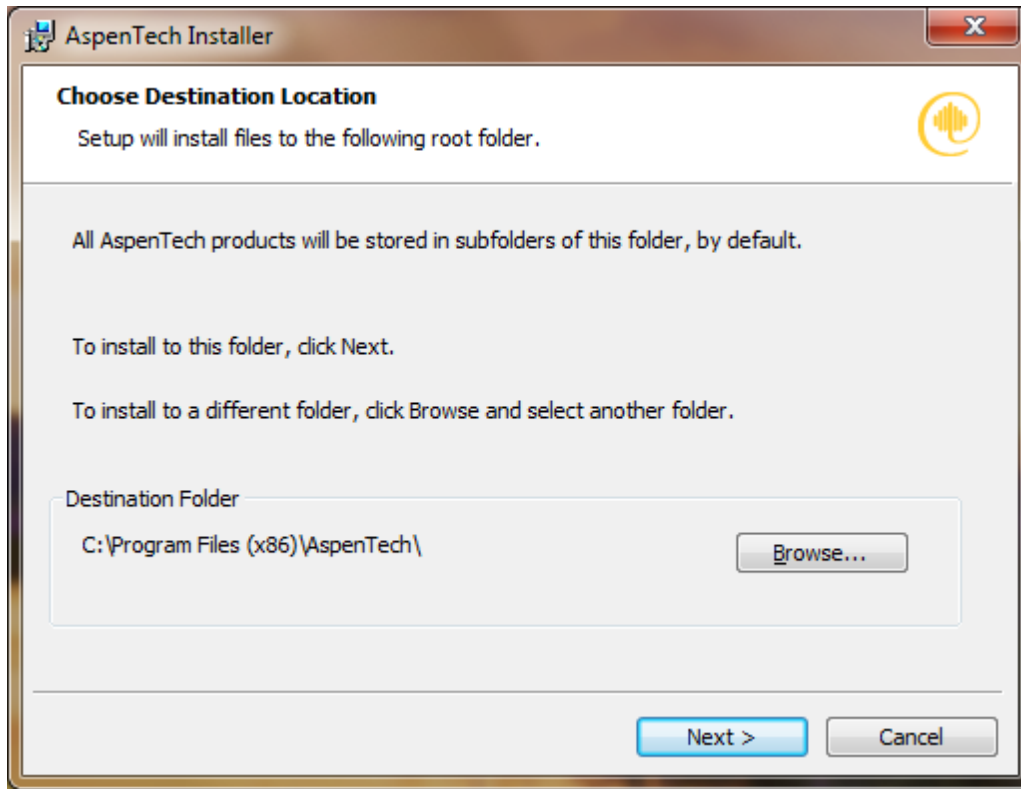
11. Accept the terms of the License Agreement and click “Next”.



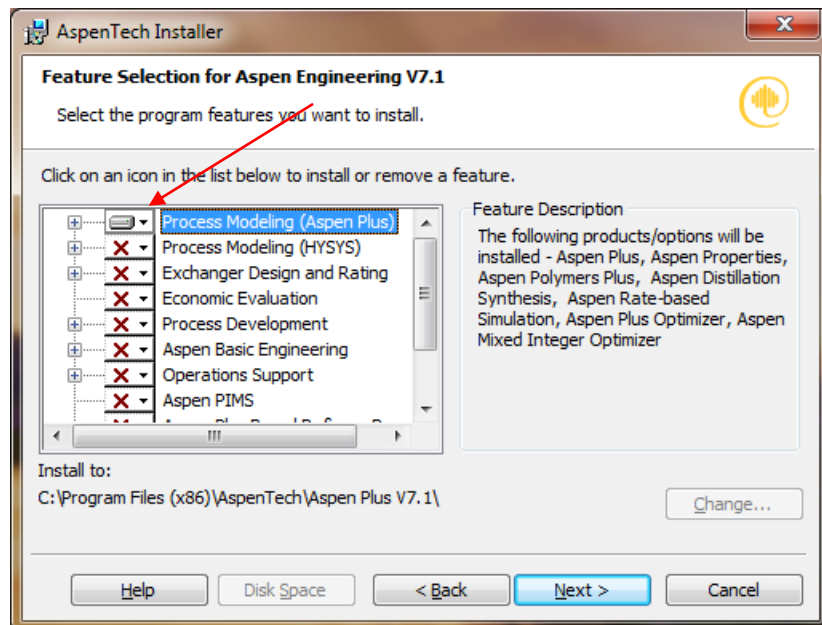
12. On the Computer Configuration Type window, select “Standard Install”.



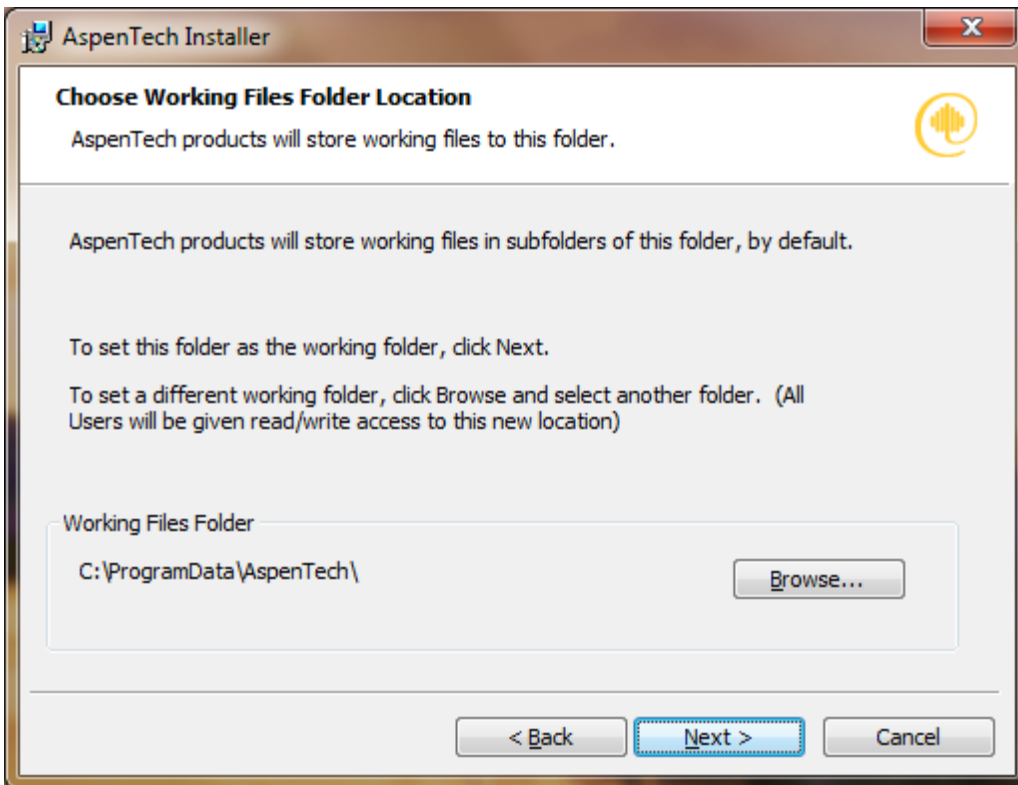
13. In the window “Choose Destination Location”, confirm that you wish to use the default location, or browse to a different location. Click “Next”.



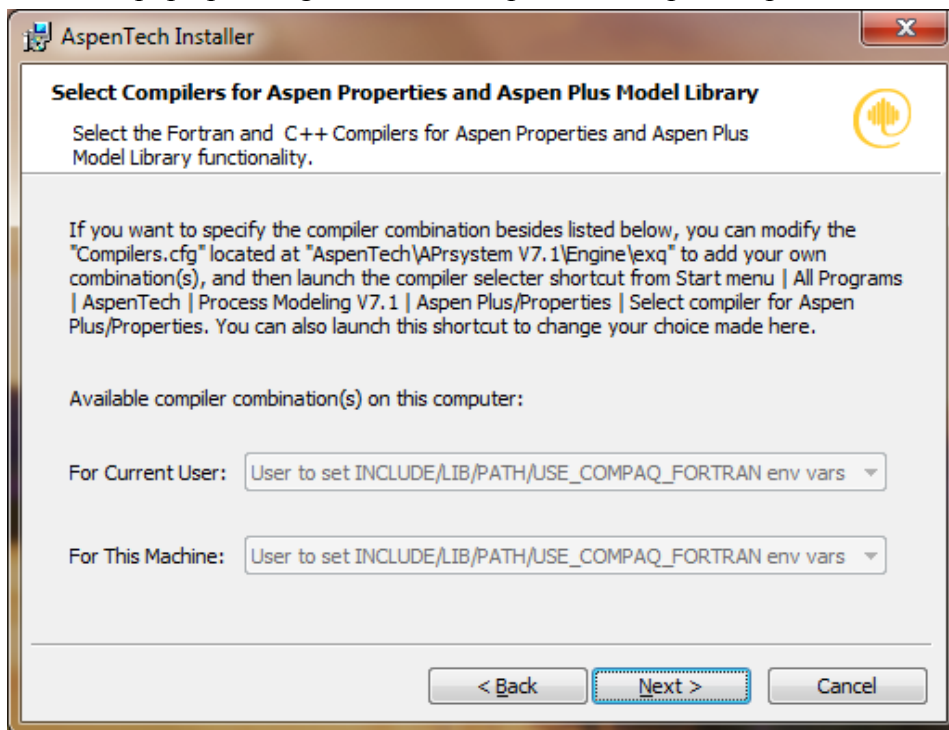
14. In “Feature Selection for Aspen Engineering V7.1”, select “Process Modeling (Aspen Plus)”. *Select only Aspen Plus.* Significant time and operating system modifications are required for the other products. Click “Next”.



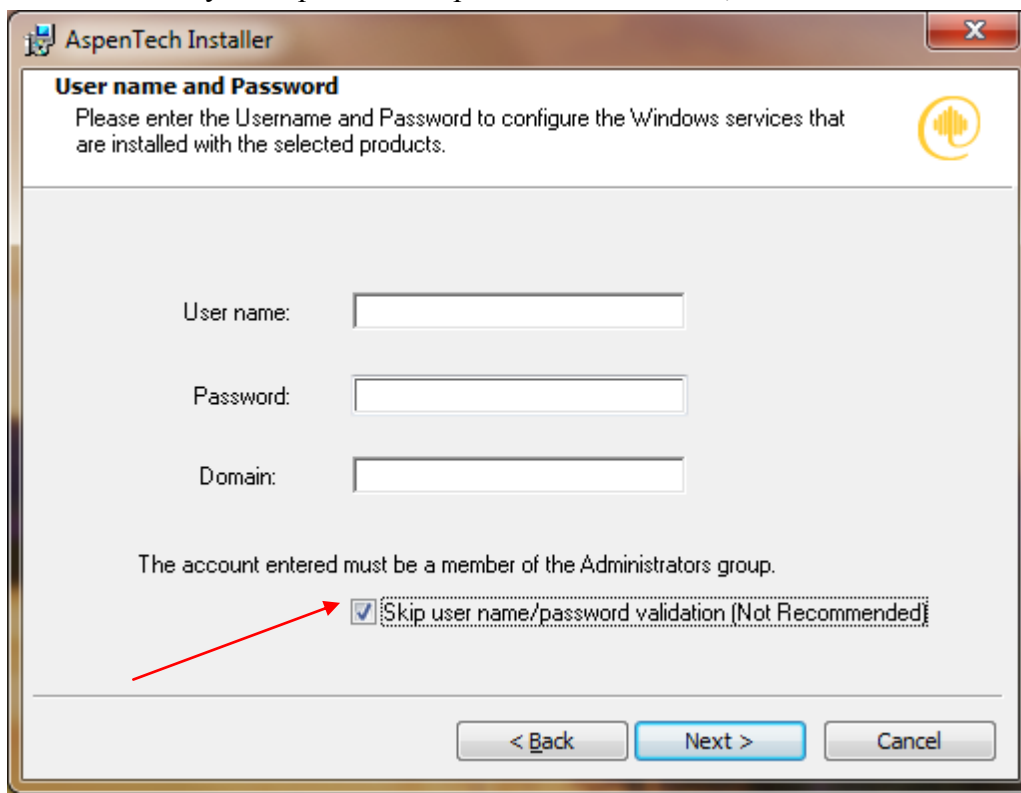
- 15. The window “Choose Working Files Folder Location” will open. This is where your ASPEN simulations will be stored. Accept the default location or browse to an alternate location. Click “Next”.



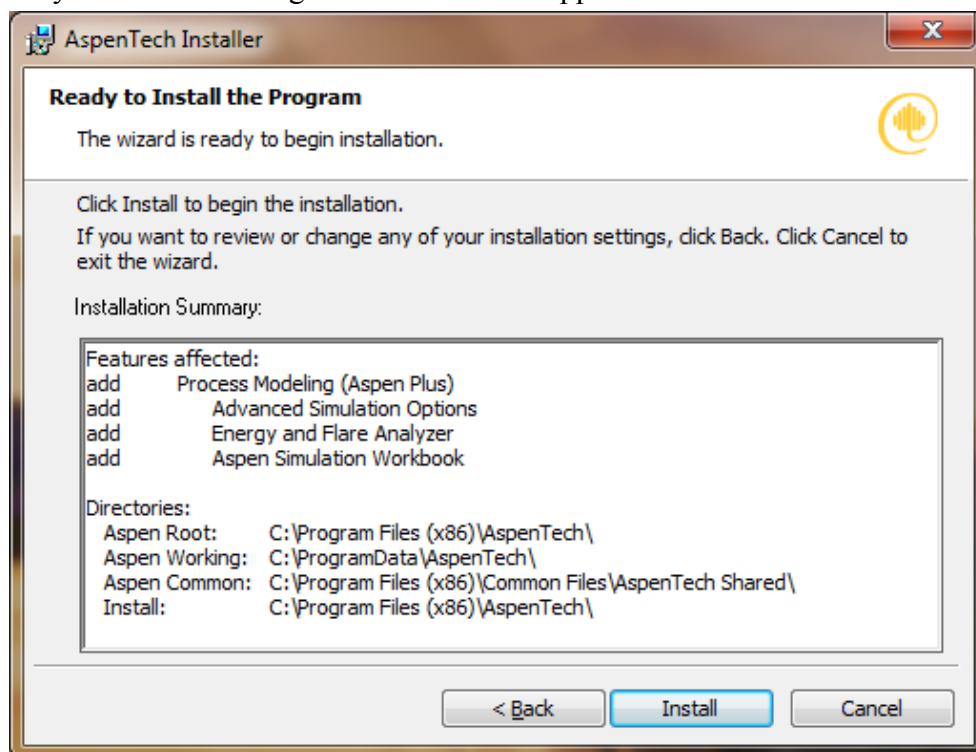
- 16. A window should pop up asking to choose compilers for Aspen Properties, click “Next.”



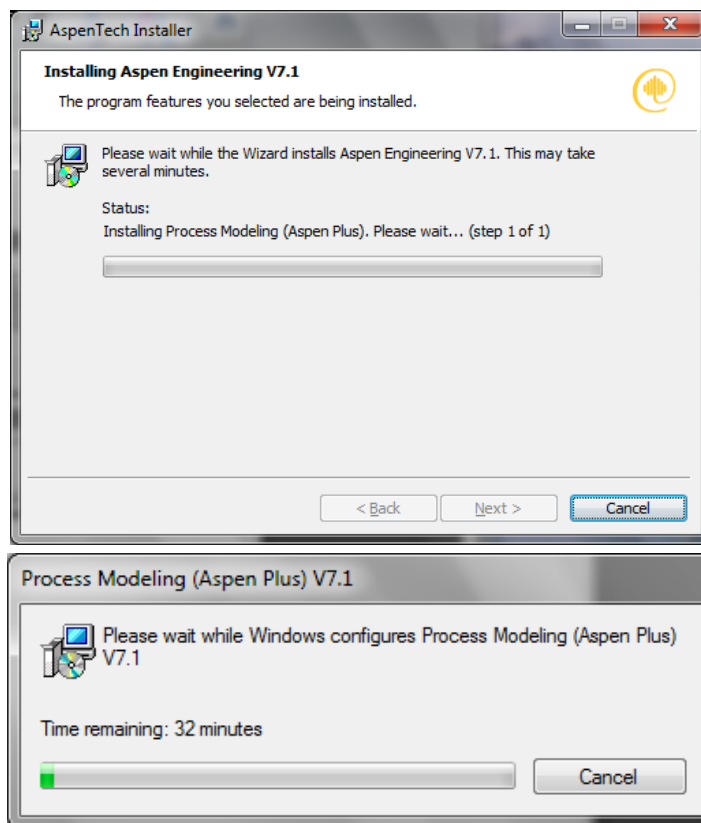
17. The next window will ask for username, password and domain, leave the fields blank and check the box that says “Skip username/password validation”, then select “Next.”



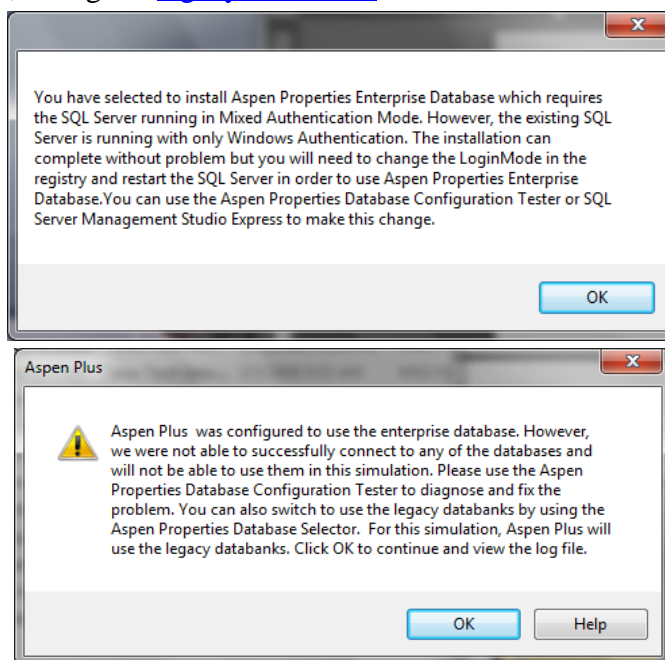
18. The “Ready to Install the Program” window will appear. Click “Install”.



19. The installation dialog box will appear. It takes approximately 20 minutes to install the single product Aspen Plus onto a hard drive.

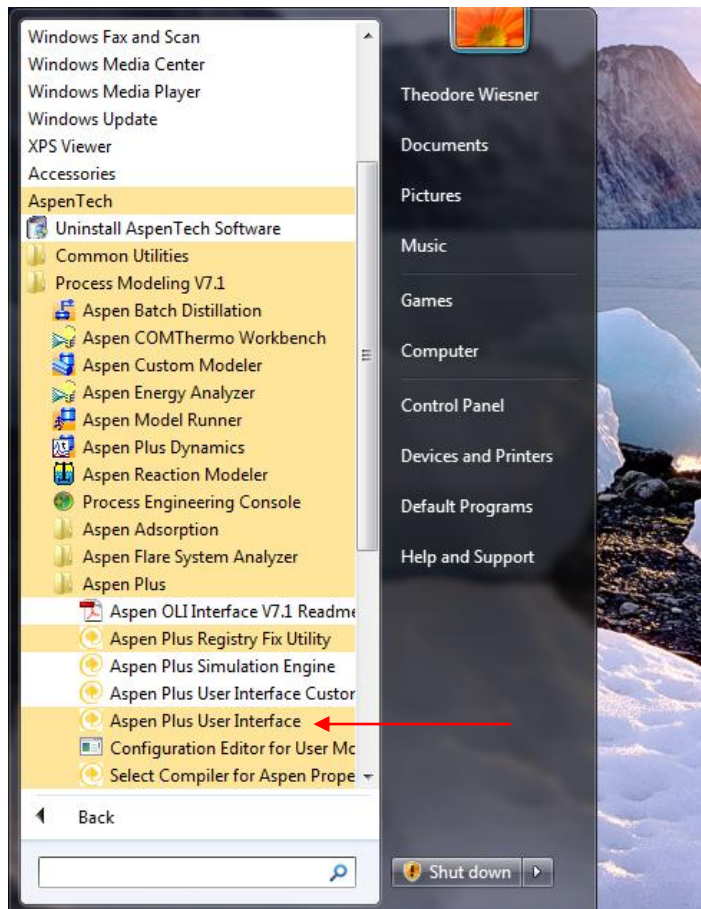


20. If at any time during the course of installing or using Aspen Plus you receive either of the following error dialogs, simply click OK and continue the installation. After the installation process is complete, change to [legacy databanks](#).

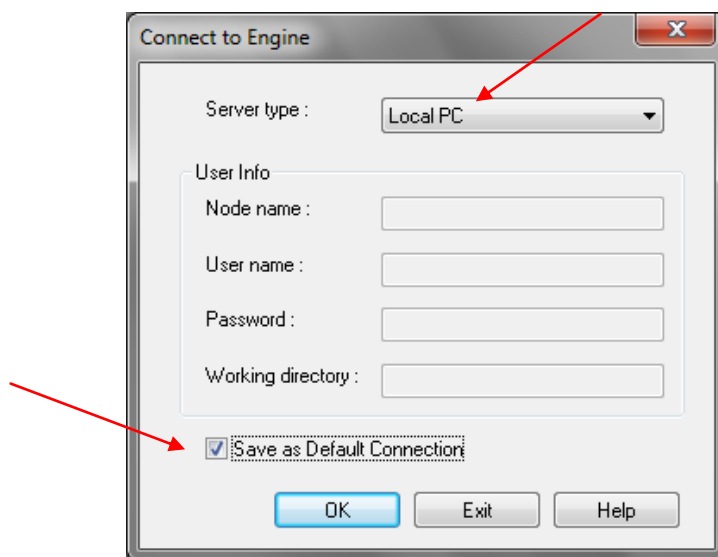


21. Upon completion of the installation, restart your computer as prompted by the installer.

22. You are now ready to run AspenPLUS on your personal computer. From Windows, go to “Start”, “ All Programs”, “AspenTech”, “Process Modeling V7.1”, “AspenPlus”, then click on “AspenPlus User Interface”

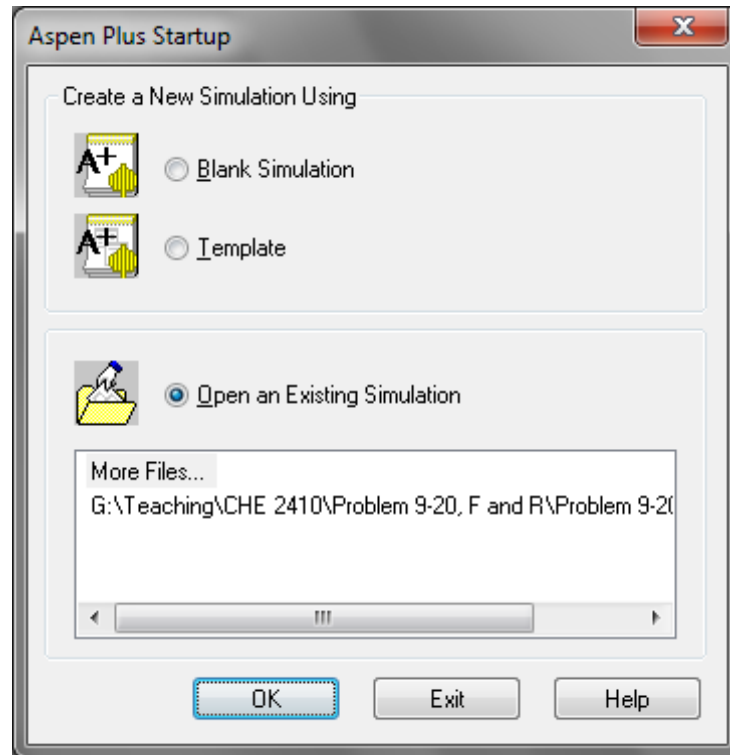


23. The first time you run the software, you must select the server type. Choose local PC and save as the default connection.



24. The first time you run the software, you must register *as an academic user*.

25. You will see the Aspen Start up window, which gives you the options of opening a blank simulation, a template, an existing simulation, etc. Select one option and click “OK”.

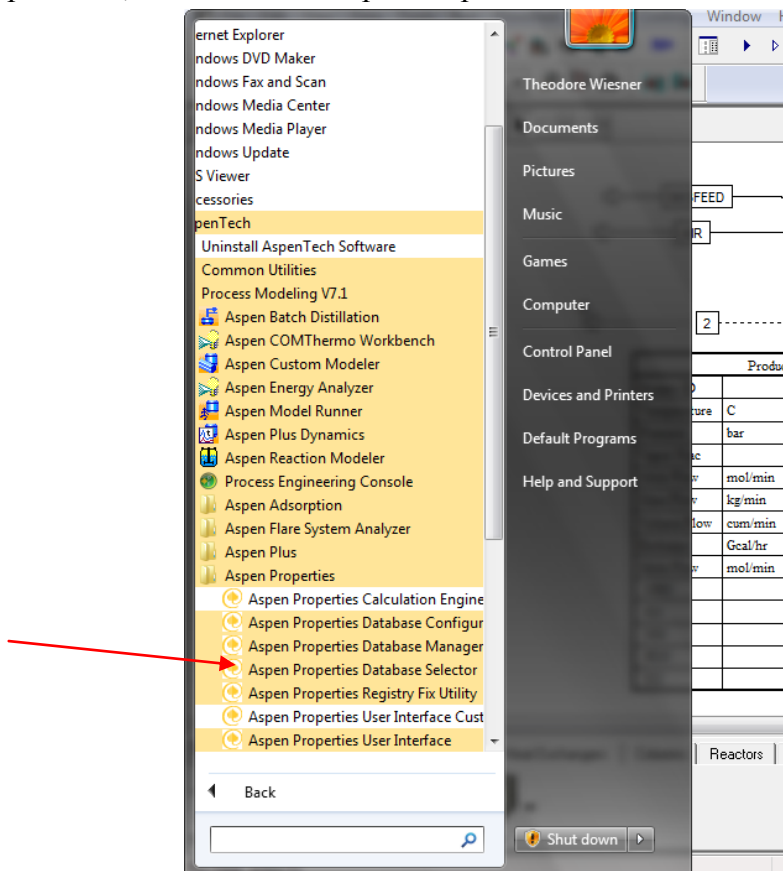


26. You can now run your simulation.

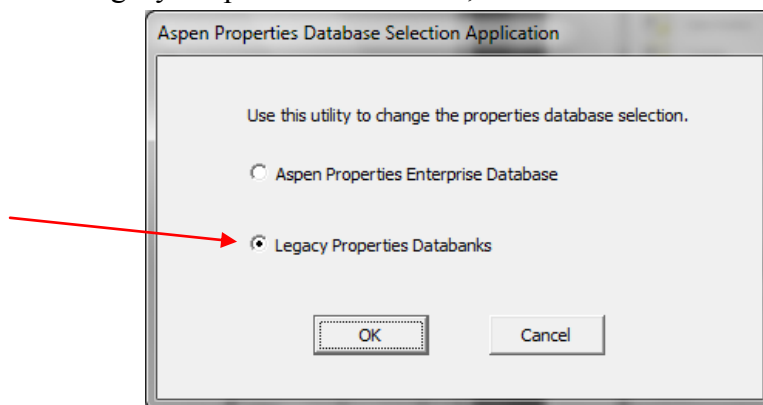
Production of Nitric Oxide				
Stream ID	AIR	NH3FEED	PRODUCT	
Temperature	C	150.0	25.0	700.0
Pressure	bar	8.000	8.000	8.000
Vapor Frac		1.000	1.000	1.000
Mole Flow	mol/min	900.000	100.000	1025.000
Mass Flow	kg/min	25.965	1.703	27.668
Volume Flow	cum/min	3.958	0.310	10.367
Enthalpy	Gcal/hr	0.047	-0.066	-0.090
Mole Flow	mol/min			
NH3			100.000	
O2		189.000		69.000
NO				90.000
H2O				150.000
N2		711.000		716.000

Preparing to Install Aspen Products under the Vista or Windows 7 Operating Systems

27. Prior to installing Aspen, download and install [Microsoft SQL Server Express \(Service Pack 3\)](#).
28. After installing Aspen, *but prior to running Aspen Plus*, change to legacy databanks. From Windows, go to “Start”, “ All Programs”, “AspenTech”, “Process Modeling V7.1”, “AspenPlus”, then click on “Aspen Properties Database Selector”



29. Select the "Legacy Properties Databanks", then click OK.



30. You can then [run Aspen Plus](#) without receiving a databank connection error.
31. Return to [start of installation instructions](#) or [error dialog](#).