
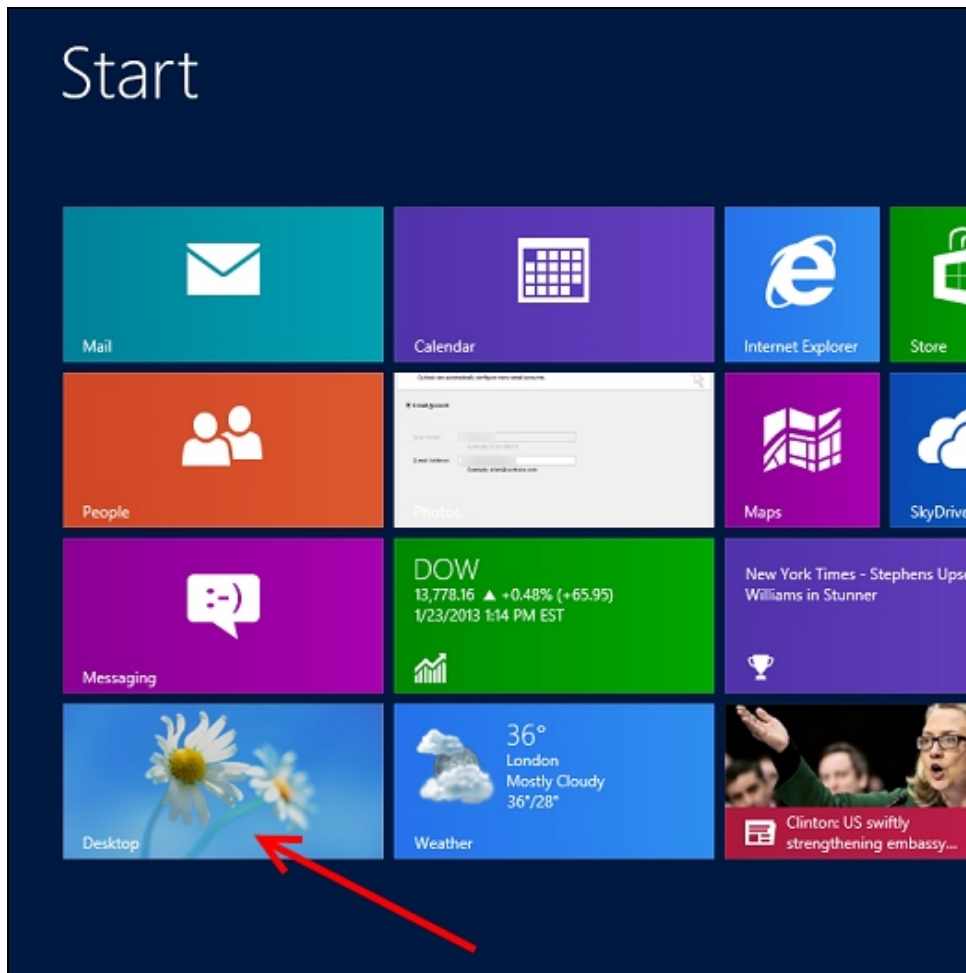



[Print](#)

## How to: Set up TTUnet VPN in Windows 8 or 8.1

### Details:

1) Go to the Desktop. From the Start Menu, you may access the Desktop by clicking the Desktop tile. (Alternatively, you may press the keyboard combination Windows key  + D.)

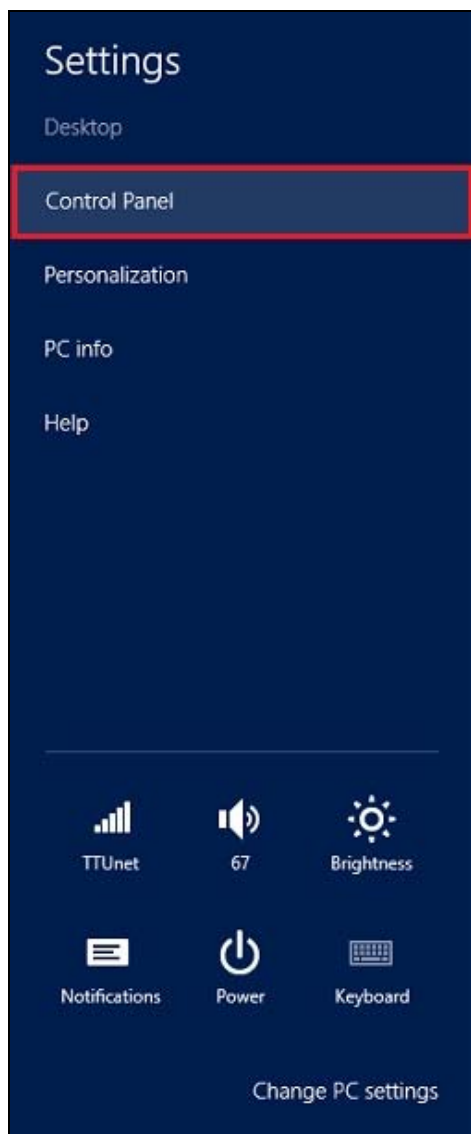


2) Move your mouse pointer to either the bottom-right or top-right corner of the screen. (Alternatively, you may press the keyboard combination Windows key  + C.) This causes the Charms menu to appear.

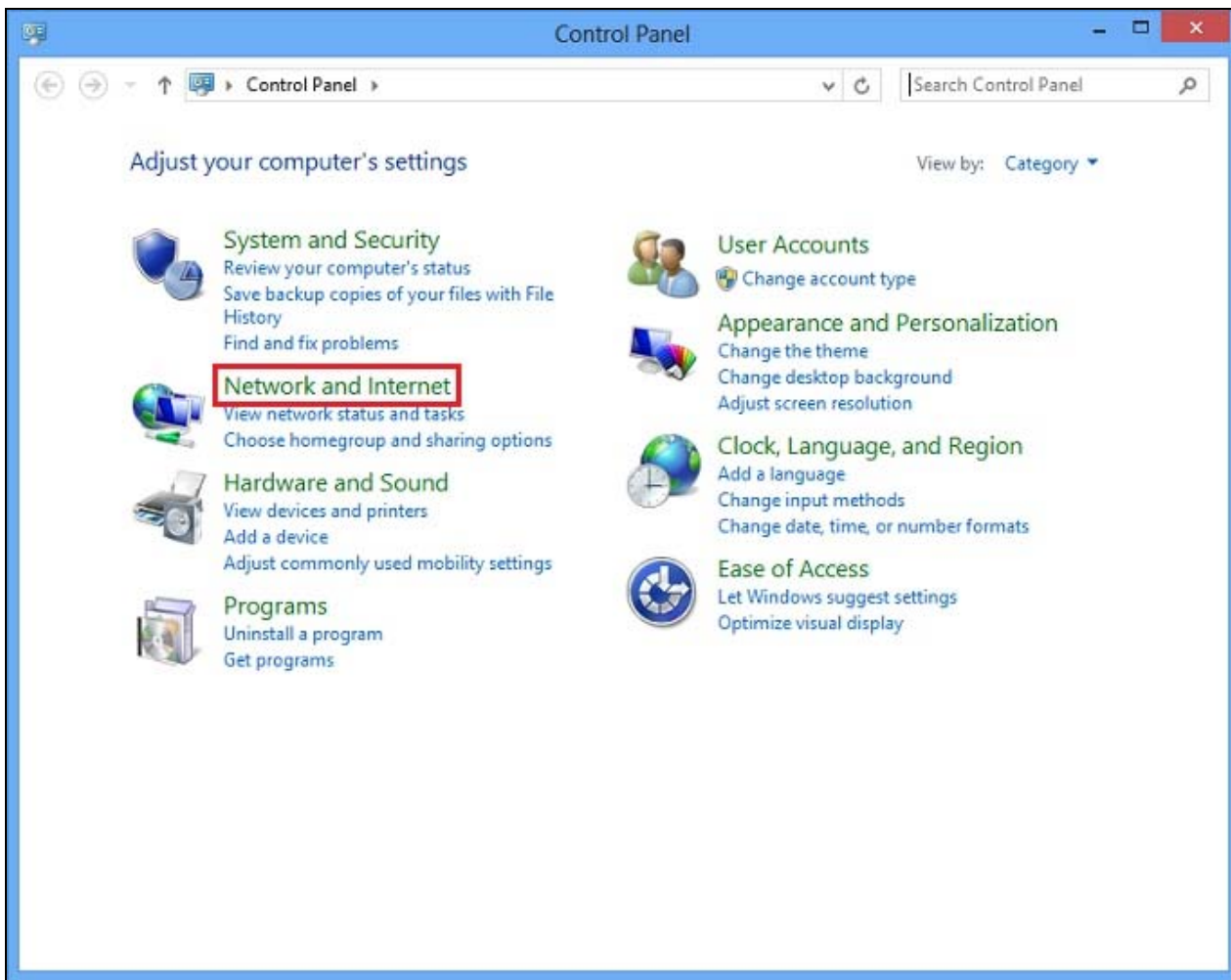
3) Click **Settings** on the Charms menu.



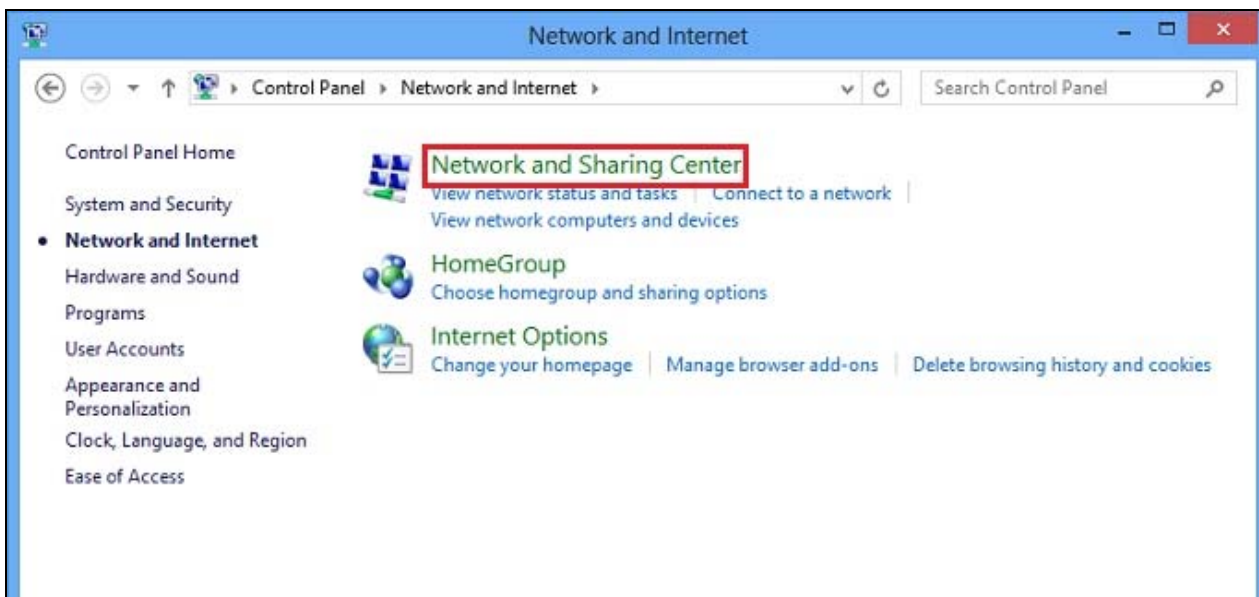
4) Click **Control Panel**.



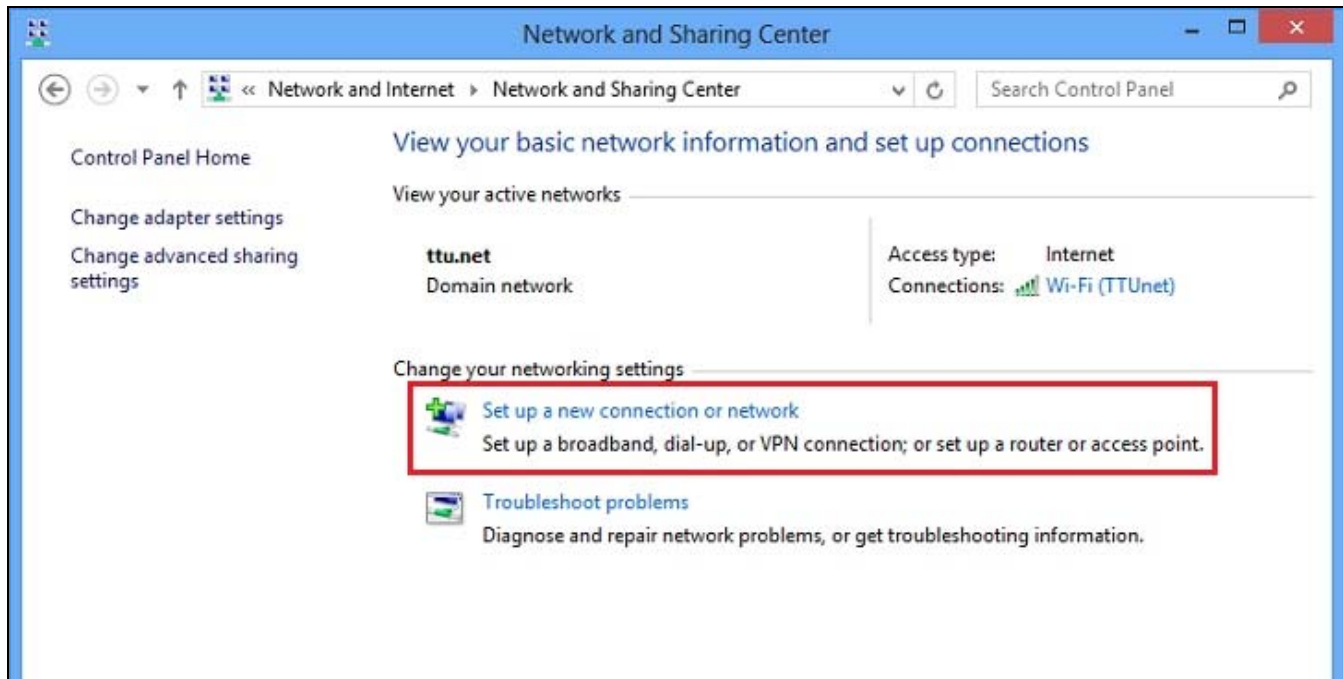
5) Click **Network and Internet**.



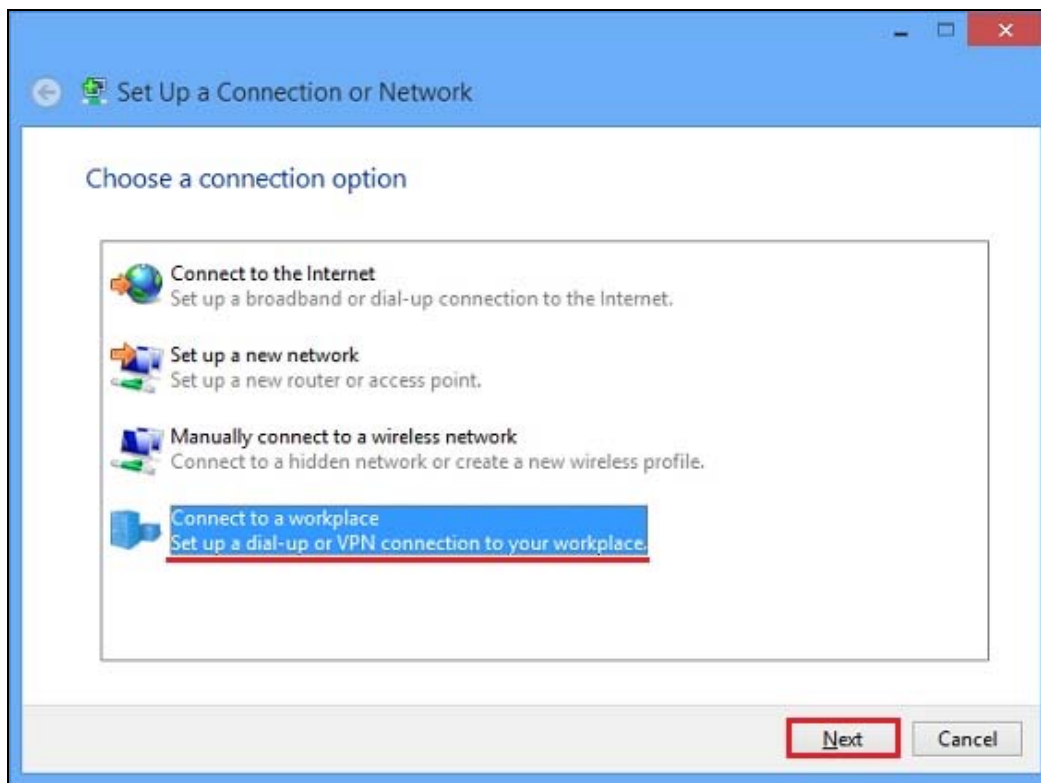
6) Open the **Network and Sharing Center**.



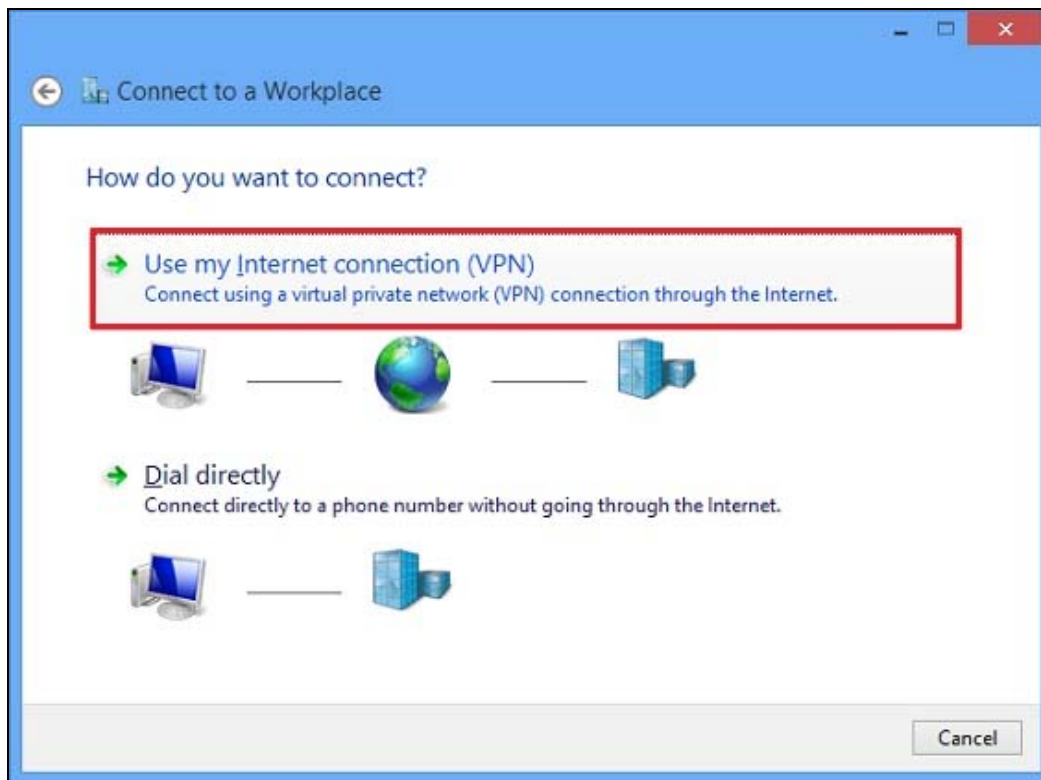
7) Click **Set up a new connection or network**.



8) Click **Connect to a workplace**, and then click **Next**.

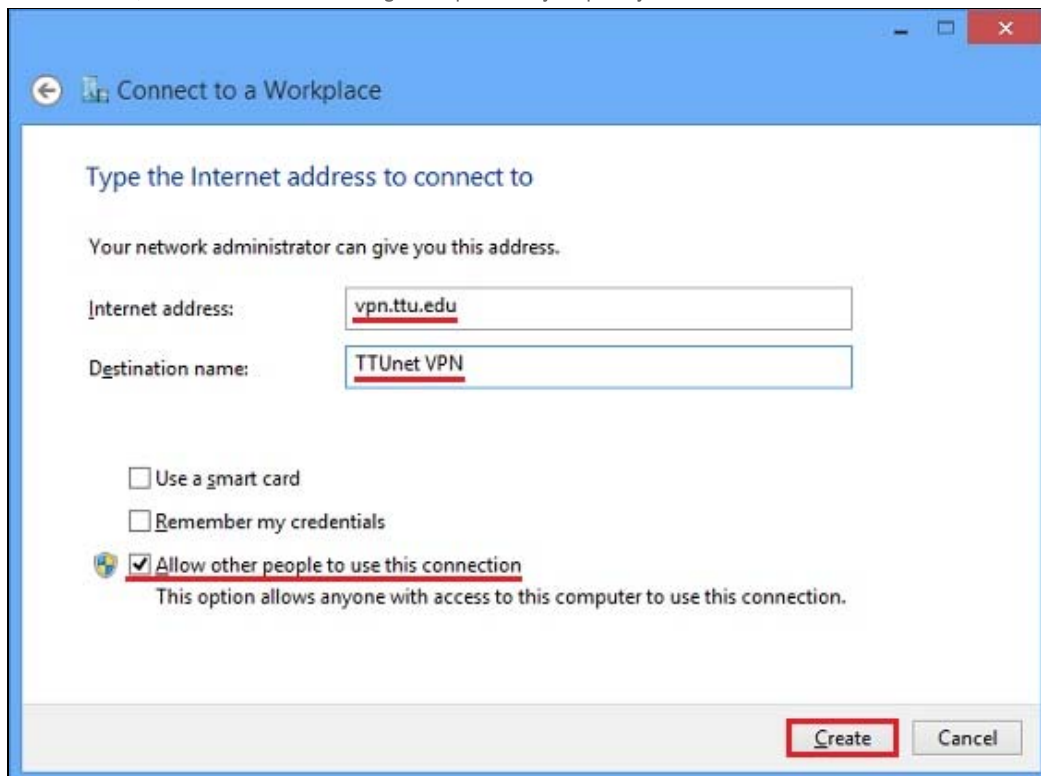


9) If presented with the following screen, click **Use my Internet connection (VPN)**.

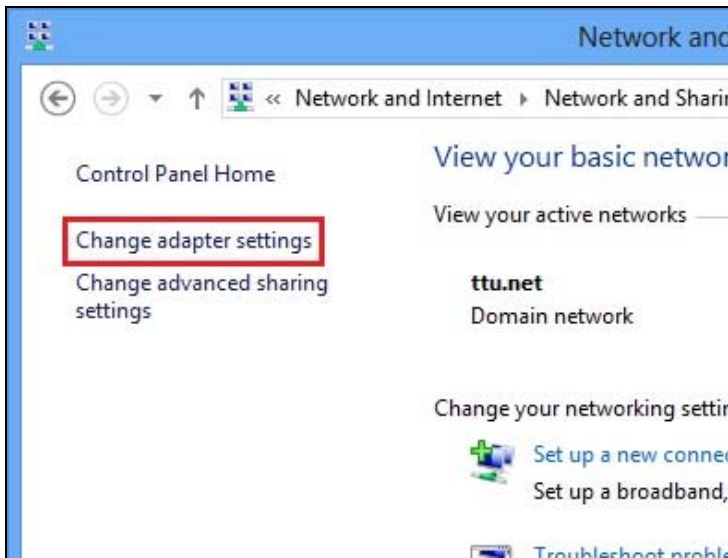


10) Configure the details for the TTUnet VPN connection, and click **Create**.

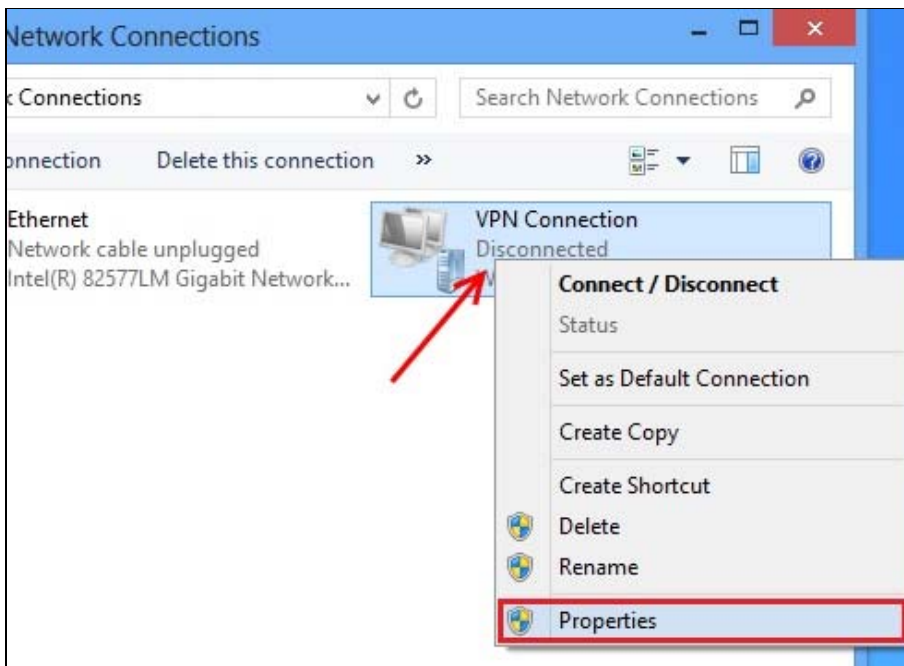
- **Internet address:** vpn.ttu.edu
- **Destination name:** TTUnet VPN (or any descriptive name you would like)
- **Use a smart card:** Unchecked
- **Remember my credentials:** Unchecked
- **Allow other people to use this connection:** If you would like all Windows user accounts on your computer to be able to use this VPN connection, check this box. Checking this option may require you to enter administrative credentials to proceed.)



11) The 'Network and Sharing Center' window should still be open. On the left side, click **Change adapter settings**.

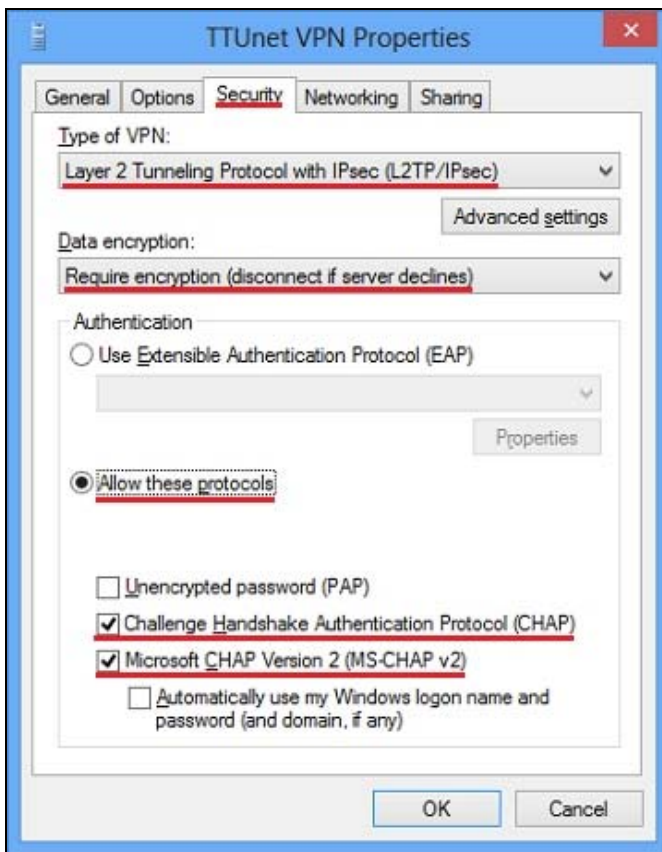


12) Right-click on the icon for your TTUnet VPN connection and select **Properties**.

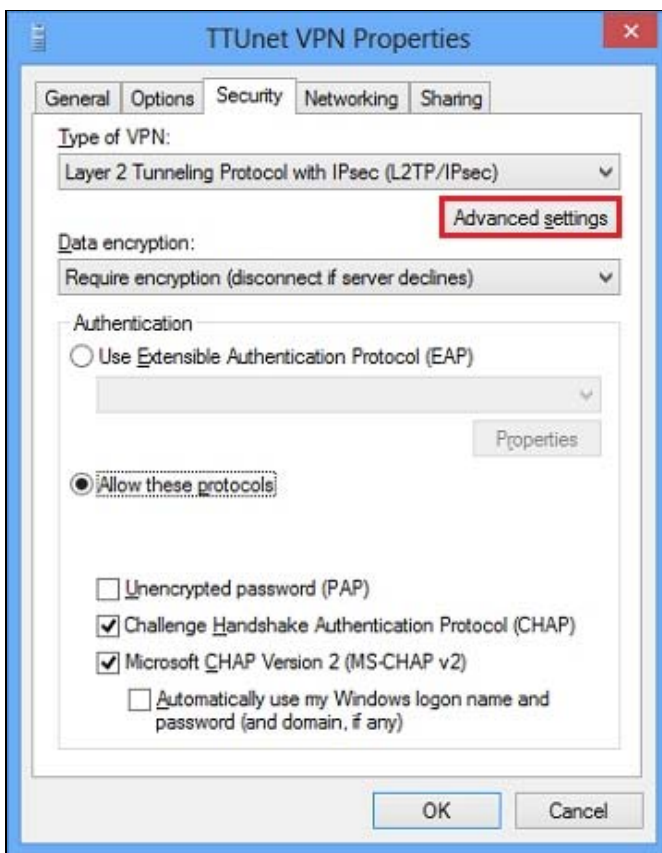


13) Click on the **Security** tab, and configure the following settings.

- **Type of VPN:** Layer 2 Tunneling Protocol with IPsec (L2TP/IPsec)
- **Data encryption:** Require encryption (disconnect if server declines)
- **Authentication:** Allow these protocols
- **Challenge Handshake Authentication Protocol (CHAP):** Checked
- **Microsoft CHAP Version 2 (MS-CHAP v2):** Checked



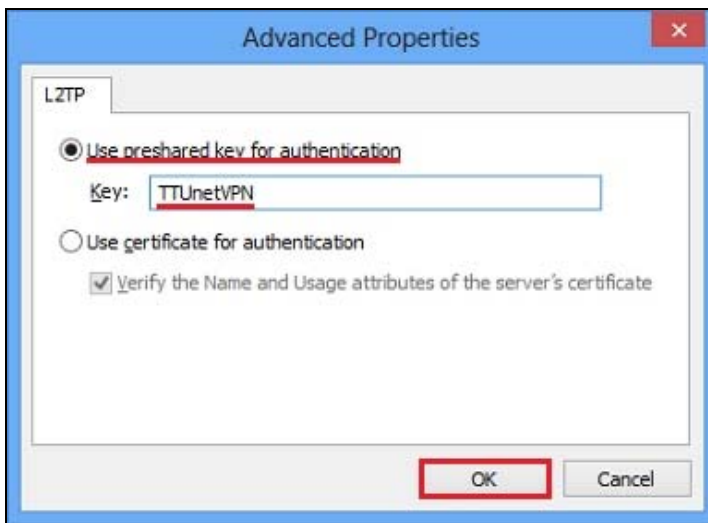
14) Under 'Type of VPN', click **Advanced settings**.



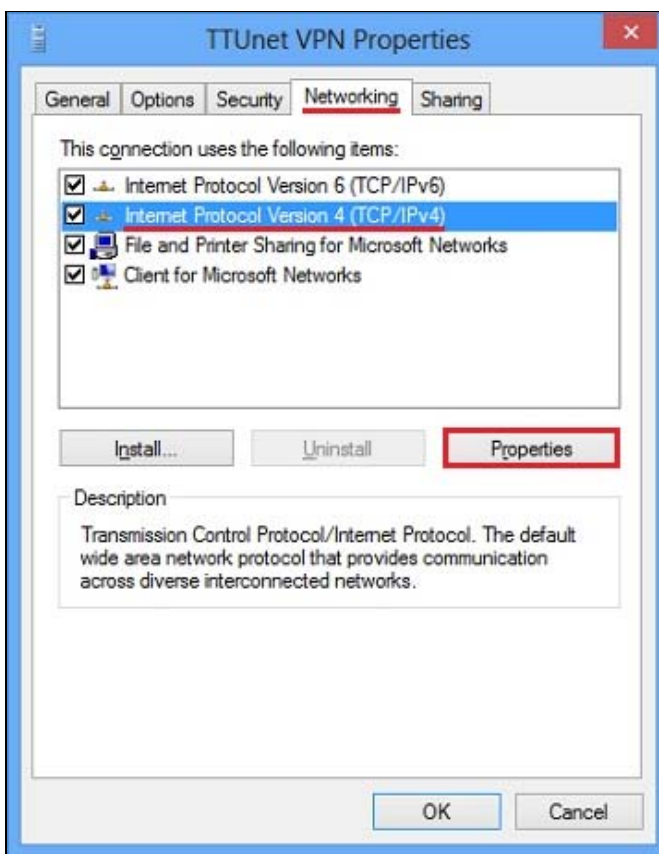
15) Select **Use preshared key for authentication**. Type **TTUnetVPN** as the key, and then click **OK**.

**NOTE:** The key is *case-sensitive*.

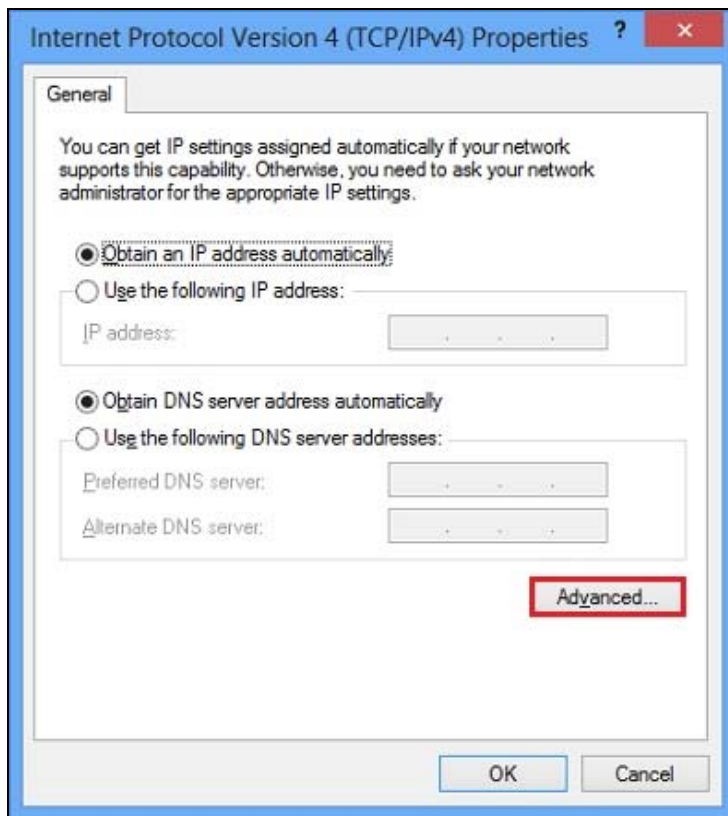





16) Click the **Networking** tab. Click once on **Internet Protocol Version 4 (TCP/IPv4)** to select it, and then click the **Properties** button.

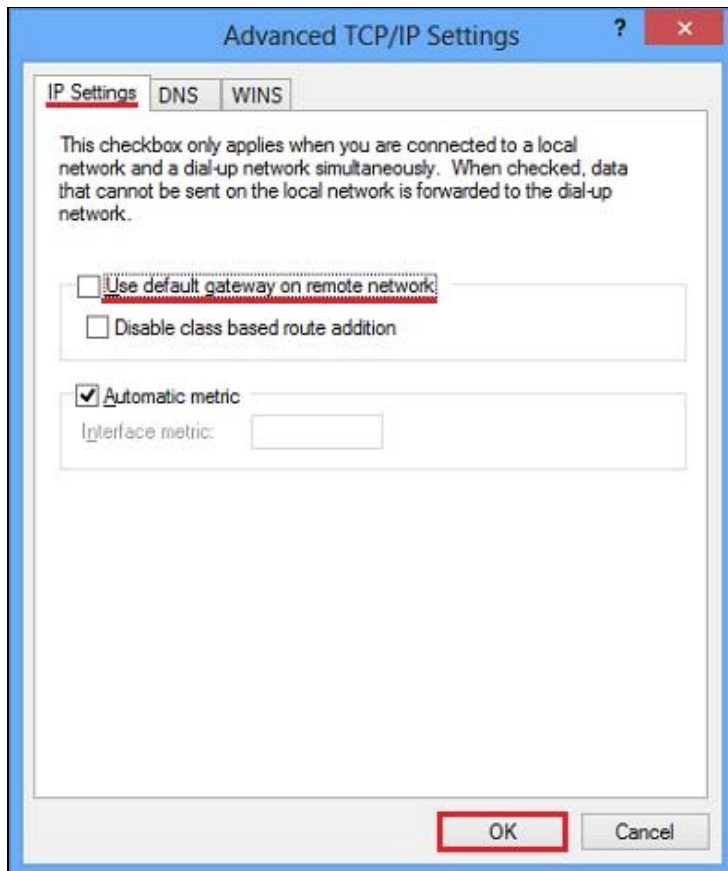


17) Click **Advanced**.

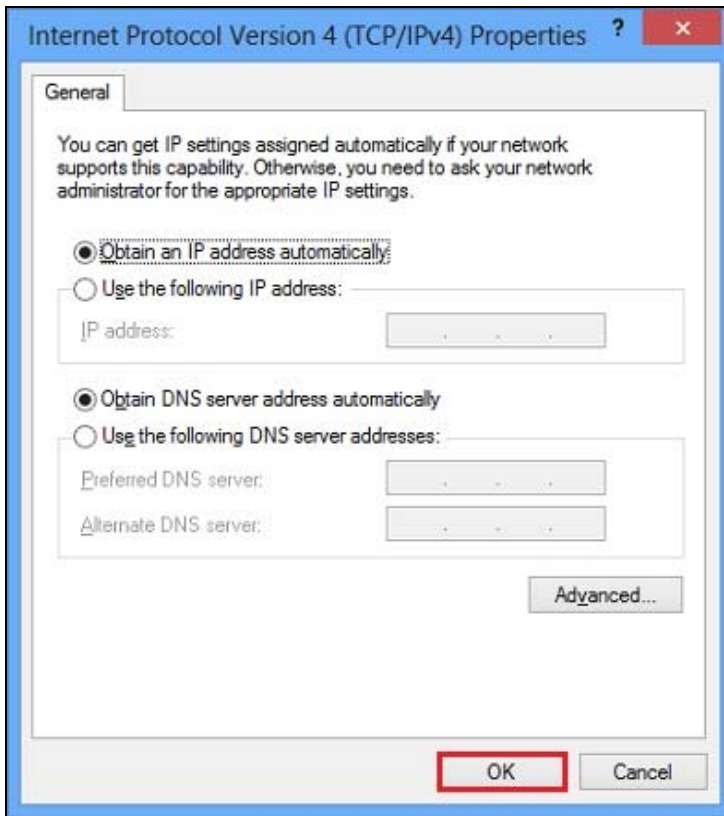


18) Under the IP Settings tab, *uncheck* the box next to **Use default gateway on remote network**. Then, click **OK**.

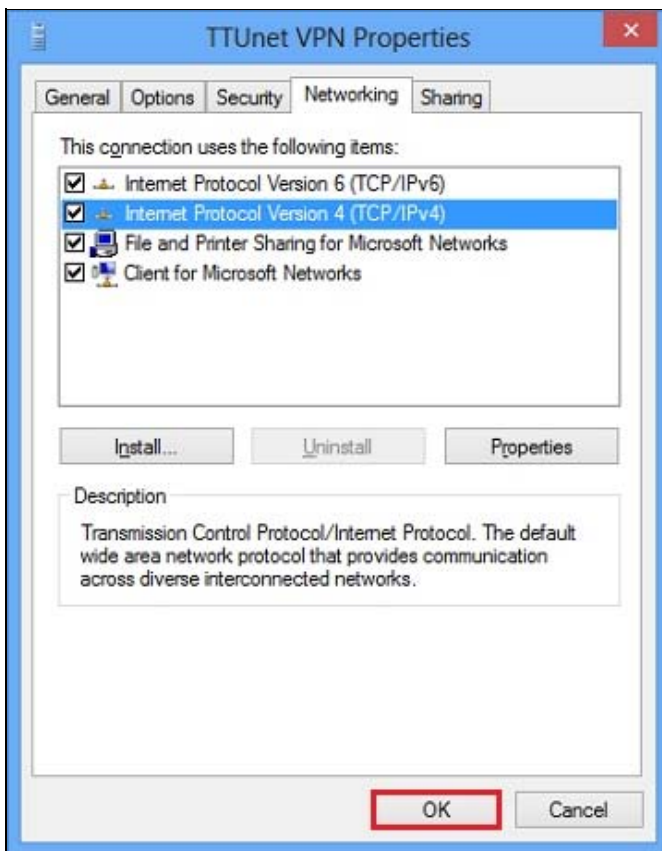
 **NOTE:** Leave the box *checked* if you plan to access TTU Library online resources, use the Texas Tech Travel system, or to access both TTU and TTUHSC email resources (such as shared calendars) while connected to VPN.



19) Click **OK** on the Internet Protocol Version 4 window.



20) Click **OK** on the properties window to save your VPN settings.



OUTCOME

TTUnet VPN has been set up on your computer enabling you to access resources not available outside TTUnet.

See also:

- [How to: Connect to TTUnet VPN in Windows 8 or 8.1](#)
- [How to: Disconnect from TTUnet VPN in Windows 8 or 8.1](#)

**Solution properties**

Solution ID:

121102165152203

Last modified date:

06/17/2014 12:42:22 PM

Taxonomy path:

Network Connectivity//VPN//Setup and Connecting//

Author:

bkurungo

---

askIT Portal - version 7.1.0  
RightAnswers Inc. 1999-2012