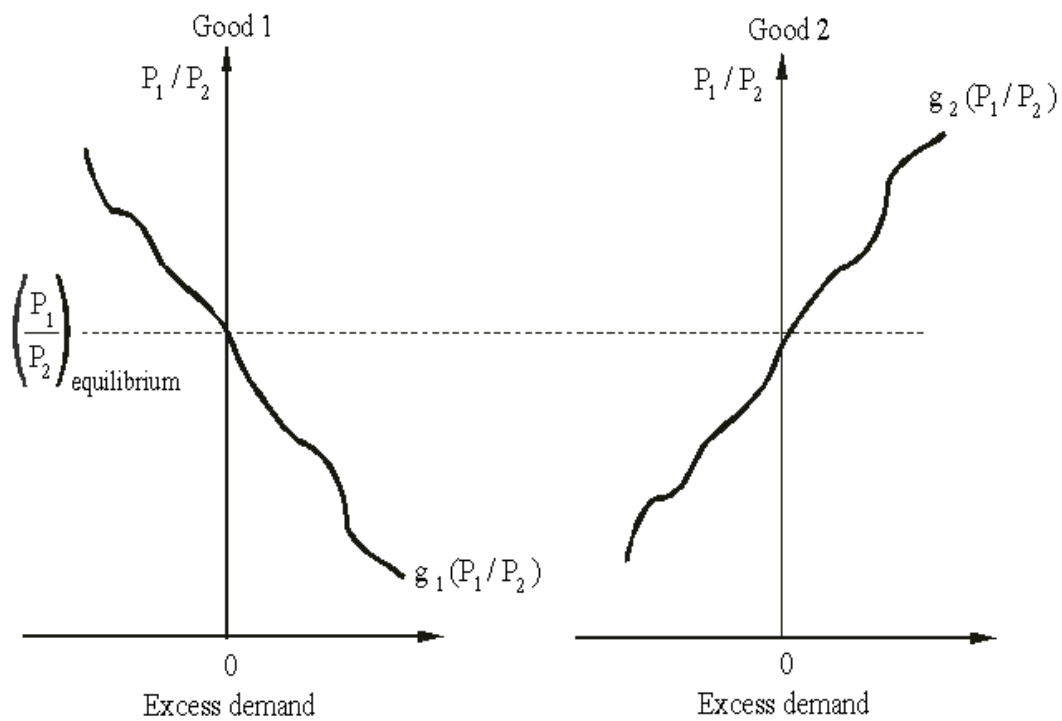


Requirements for the Ph.D. Degree in Economics

Department of Economics

Texas Tech University

Fall 2011



Requirements for the Ph.D. Degree in Economics

Department of Economics

Texas Tech University

Part I. Coursework

The graduate school requires 20 courses (60 hours) for the Ph.D. degree. The department requires **8 core courses**, 3 areas of specialization – or fields (each area of specialization consists of at least 2 courses in the chosen field, i.e. a total of at least **6 field courses** are required), and **6 approved electives** (normally, these courses will also be economics courses with a maximum of two courses from outside the economics department). Students with prior graduate work may transfer in courses as specified in the Graduate Catalog; however, no transfer credit will be given for any of the 8 core courses. All courses in economics must be passed with a minimum grade of B- in order to count toward the degree.

The eight core courses are as follows:

ECO 5311	Macroeconomic Theory and Policy
ECO 5312	Microeconomic Analysis
ECO 5313	Mathematical Economics I
ECO 5314	Econometrics I
ECO 5315	Mathematical Economics II
ECO 5318	History of Economics
ECO 5381	Empirical Studies in Macroeconomics
ECO 5382	Advanced Microeconomics

These core courses should be completed before any field courses or approved electives are taken.

Currently the department offers the following field and /or elective courses:

ECO 5316	Time Series Econometrics
ECO 5317	Natural Resources and Environmental Economics
ECO 5319	Advanced Topics in Environmental Economics
ECO 5321	Labor Markets Theory and Policy
ECO 5322	The Economics of Wages and Income
ECO 5323	Monetary Theory I
ECO 5324	Seminar in Public Finance
ECO 5325	Seminar in Economic Policy
ECO 5328	Monetary Theory II
ECO 5329	Current Problems in Public Finance
ECO 5332	Advanced International Finance
ECO 5333	Advanced International Economics
ECO 5346	Game Theory
ECO 5347	Industrial Organization Theory
ECO 5348	Seminar in Empirical Industrial Organization

These courses are usually offered on a two year cycle but note that because at least five students are required in order to offer a course, not all field/elective courses may be offered at a given time unless there is sufficient interest among current students.

The desired sequence of core and field courses is as follows:

<u>1st Year:</u>	Fall Semester	ECO 5311, ECO 5312, ECO 5313
	Spring Semester	ECO 5314, ECO 5315, ECO 5318
<u>2nd Year:</u>	Fall Semester	ECO 5381, ECO 5382, one field course
	Spring Semester	3 field courses
<u>3rd and 4th Year:</u>	Remaining field course, approved electives, and ECO 8000 (12 Dissertation hours)	

Part II. Degree Plan

Students should fill out a degree plan in their second or third regular semester. The degree plan lists the courses that are going to be used to fulfill the coursework requirements discussed above. The plan may be changed with relatively little hassle, but it should be kept up to date because when the time comes to graduate, the Graduate School will check the degree plan against the courses the student has actually taken.

Part III. Comprehensive Examinations

The graduate school requires a set of comprehensive examinations (qualifying examinations in the parlance of the Graduate School) before writing the dissertation. The economics comprehensive examinations are broken down into two parts: the core examination and the field examinations.

The core examination covers the core courses. Students will have to take the core examination as soon as they have finished the 8 core courses (i.e. during their 4th full semester in the program).

The examination comprises of two four and a half hour sessions separated by two or three days (i.e. a Friday and a Tuesday or a Thursday and a Monday). The “micro session” will test the following courses: ECO 5312, ECO 5313, ECO 5315, and ECO 5382 and the macro session will test ECO 5311, ECO 5314, ECO 5318, and ECO 5381. Students must take both sessions together the first time, but a student who passes one session and fails the other will only be required to re-take the session that he or she failed. According to the rules of the Graduate School, the student may only take the examination twice in order to secure a passing score (...a student... *“who does not pass the qualifying examination may be permitted to repeat it once after a time lapse of at least four month but not more than 12 months from the date of the unsatisfactory examination.”* TTU 2010/11 Undergraduate/Graduate Catalog, p.81)

The Department of Economics **requires** a graduate student who does not pass all or part of the core exam to repeat it during the semester that directly follows the semester in which s/he took it for the first time. If a student takes the core examination during the Fall semester (Spring semester) for the first time and failed one or both parts, s/he will be required to repeat all or part of it during the following Spring semester (Fall semester). Please note that good grades in core courses **do not** guarantee success in the Ph.D. core comprehensive exams.

The field examinations will be given after the student **completes** the second course of the two-course field. The field examination **will not** be given during the semester in which the student is taking the second field course. The field examinations over the three fields do not have to all be taken in the same semester. As with the core examination, a student who fails a field examination must fulfill all requirements needed to pass the examination during the semester that directly follows the semester in which s/he took it for the first time. After a student has passed all of the comprehensive examinations, the graduate advisor will notify the Graduate School that the student has passed the qualifying examinations and will request that the student be admitted to candidacy for the degree. The formal admission to candidacy is done by the Graduate Council, which meets monthly in the first part of the month. The Graduate School requires that at least a four month period transpire between the admission to candidacy and the final dissertation defense.

Part IV. Ph.D. Candidacy

The Director of Graduate Studies in the department will recommend to the Dean of the Graduate School that a student be admitted to candidacy for the degree of Ph.D. in economics after he/she fulfills the following requirements:

- a. Pass the Ph.D. core comprehensive exam.
- b. Pass three Ph.D. field exams (both “a” and “b” are commonly known as the Ph.D. comprehensive exam).
- c. Obtain approval from the Director of Graduate Studies to start taking ECO 8000 credit hours. Note that this approval will only be granted when the student submits evidence that he/she has made significant effort towards his/her dissertation research. As an example of this “significant effort” is a letter from the student’s dissertation chairperson stating (broadly) the dissertation topic and the potential dissertation committee members. Students enrolled in ECO 8000 are expected to present a dissertation proposal during the first semester of this enrollment.

Part V. The Proposal Defense

After the student has chosen a topic and made an outline of the work he or she will do in order to complete the dissertation, the dissertation chairperson should suggest a proposal defense. This defense is not a formal requirement of the Graduate School. Rather it is a departmental requirement intended to assure that the student’s proposed course of research will be sufficient to

satisfy the requirements of the members of the dissertation committee. It is also a point in time for the committee members to make suggestions before the student has invested too much time in the dissertation. The proposal defense is primarily for the student's benefit and as such it is important to hold the defense while the dissertation is still in the planning stage.

Part VI. The Final Defense

After the student has completed the dissertation, the Graduate School requires that there be a final defense (or Final Examination, as the Graduate School calls it). This defense is a public defense, meaning that any interested party can attend and ask questions. The Graduate School will also send a representative to ensure that the proper procedures are being followed.

After this defense, the dissertation advisor will send the Graduate School a notice that the student has successfully defended the dissertation, and this will allow the student to graduate. Please note that in order to graduate in a given semester, a student **must defend approximately six weeks before the graduation date**. The Graduate School has a calendar of various deadlines that must be met that semester, and they will send this to the student at the beginning of the semester that the student has indicated that he or she will graduate.

Part VII. Annual Review of Progress in the Doctoral Program

The graduate faculty of the department will conduct a formal, annual review of each doctoral student's progress in the program. Any student not making satisfactory progress may be placed on probation and given conditions to meet to stay in the program. Continued unsatisfactory progress in any area of a student's work will be cause for dismissal. Graduate students will be given a copy of their annual evaluation.

Part VIII. Financial Assistance

Financial assistance (scholarship, teaching assistantship) are awarded on a competitive basis for the duration of the two long semesters (fall, spring) of the academic year. Continued financial assistance is contingent on the student's academic progress in the program as well as satisfactory performance of all the duties associated with the assistantship. In general, to qualify

for continued financial assistance students are required to make satisfactory progress in the program, maintain a GPA of 3.5 or higher, and perform all the duties and responsibilities associated with their appointment (specific duties and responsibilities for teaching assistants (TA's) and graduate part-time instructors GPTI's) will be outlined in a workshop/orientation at the beginning of each semester.

In addition to the requirements above, international teaching assistants are required to attend the International Teaching Assistant Workshop (ITA Workshop). This is a university requirement (see Operating Policy 64.03). The ITA Workshop is conducted each summer to assess the language skills of ITA's. The department offers international students employment in the form of a teaching assistantship with the presumption that they will teach at some point during their employment. As per OP 64.03, an international student will not be allowed to teach without having fulfilled all the requirements of the ITA workshop. This workshop is offered every summer, starts around mid July, and lasts for three weeks.

Please note that if an ITA does not pass all requirements of the ITA workshop at the end of his/her second year in the program, he/she may lose all or part of his financial support from the department.

Part IX. Important University Operating Policies and Procedures

It is very important that you familiarize yourself with University Operating Policies and Procedures (OP). They define your rights and responsibilities as a graduate student and, in the case of many of you, as a teaching assistant. The majority of the OP's related to you are listed in Section 64. The following is a list containing the most important OP's concerning you that you must read:

OP 64.02: Defines full-time studies, continuous enrollment, and residency conditions. <http://www.depts.ttu.edu/opmanual/OP64.02.pdf>

OP 64.03: Defines the responsibilities and procedural guidelines for TA's and GPTI's. <http://www.depts.ttu.edu/opmanual/OP64.03.pdf>

OP 64.04: Defines the academic requirements for continuation of graduate studies. <http://www.depts.ttu.edu/opmanual/OP64.04.pdf>

OP 64.07: Outlines the disposition of cases involving graduate student appeals. <http://www.depts.ttu.edu/opmanual/OP64.07.pdf>

OP 64.11: Defines guidelines for handling graduate student employee insurance. <http://www.depts.ttu.edu/opmanual/OP64.11.pdf>

OP 70.05: Defines university policy and employee eligibility for insurance programs and other benefits. <http://www.depts.ttu.edu/opmanual/OP70.05.pdf>

OP 32.25: Defines guidelines for tutoring for payment.
<http://www.depts.ttu.edu/opmanual/OP32.25.pdf>

Contacts:

Rosie Carrillo
Administrative Business Assistant
Department of Economics & Geography
806.742.2201
rosie.carrillo@ttu.edu

Rashid Al-Hmoud
Director of Graduate Studies
Department of Economics & Geography
806.742.2201
rashid.al-hmoud@ttu.edu

Additional information can be found at the following websites:

<http://www.webpages.ttu.edu/kbecker/Graduate%20Students/GradProgramHome.htm>