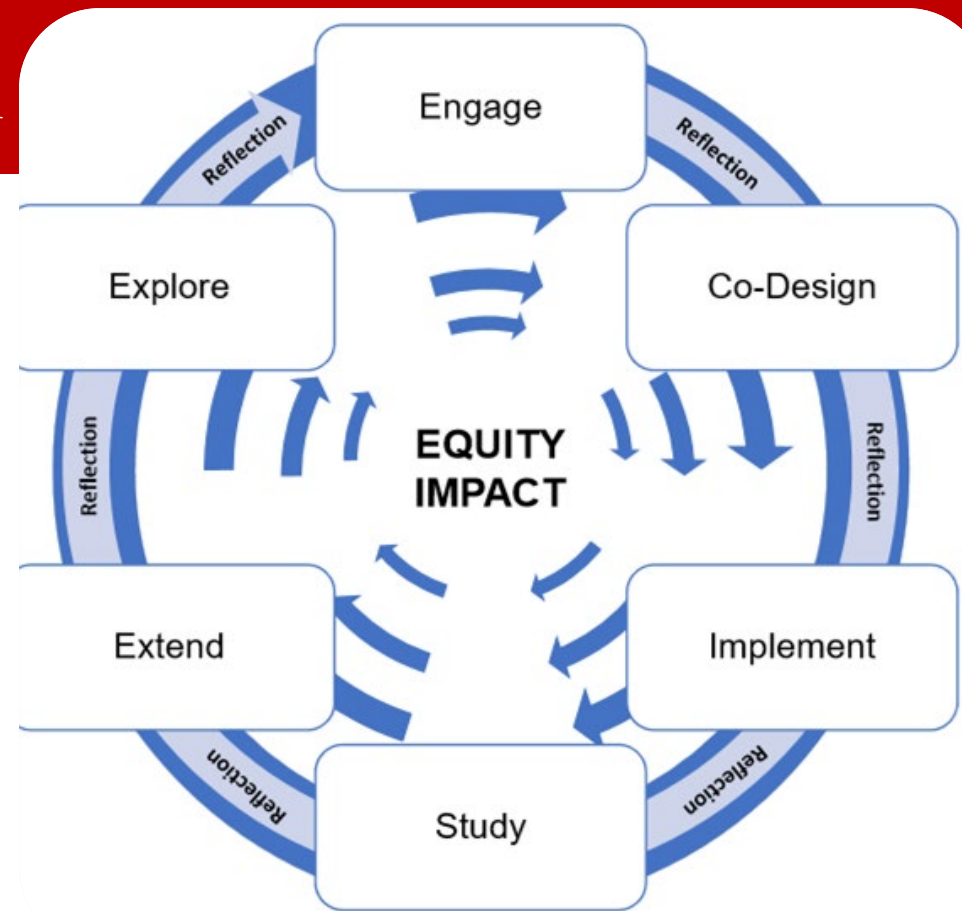


Expanding Arts Education to Rural Communities – Wallace Passports Program

- The Texas Cultural Trust reported students in rural communities have 70% less access to arts courses than students in suburban communities (Explore)

Suburban schools offer **70%** > More arts courses than rural schools

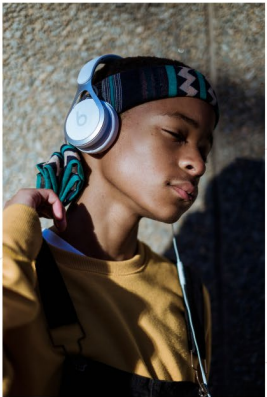
- Set a goal of ensuring that every student in Hockley County has access to at least 2 high-quality experiences in the arts every year by 2025 (Engage)
- Research successful programs across the country and develop partnerships with industry leaders to create a Collective Impact Project (Co-design)
- Host community stakeholder meeting to engage community partnerships, create resource data base, and long-term plan for sustainability (Implement)
- Survey students, families, and teachers to assess impact each year and make adjustments for continued growth and support (Study)



The IEL Equity Impact Framework



Expanding Arts Education to Rural Communities Wallace Passports Program



An educational outreach program to innovate arts and cultural education throughout Hockley County.



COLLABORATION GOALS

- Investigate local needs and interests for arts and cultural education.
- Serve ALL Hockley County public schools
- Provide on-site and on-campus opportunities for student engagement
- Increase "soft-skills" among area students
 - Confidence
 - Risk-taking
 - Creativity
 - Empathy
 - Empathy
 - Resiliency
 - Presence
 - Collaboration



For more information on the project visit:
www.WallaceTheater.com or



EPFP™ POLICY
LEADERSHIP
NETWORKING
Education Policy Fellowship Program



Alycyn Keeling, Texas EPFP 2022-2023 Fellow