

TEXAS TECH UNIVERSITY
Graduate School™
Year in Review
2016-2017

By The Numbers

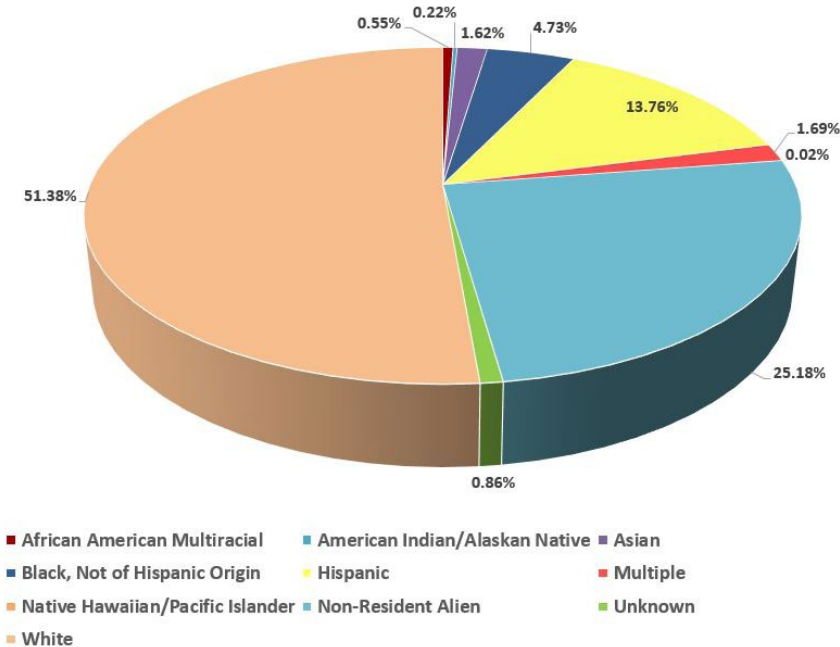
- 6058 graduate students (16.8% of Texas Tech University's student population)
 - 1313 international students (21.7% of graduate student population)
 - 3172 master's students (54.12% of graduate student population)
 - 2429 doctoral students (41.45% of graduate student population)
 - 259 non-degree students (4.42% of graduate students population)
- 100 master's programs
- 61 doctoral programs
- 61 graduate certificates
- 1553 graduate faculty



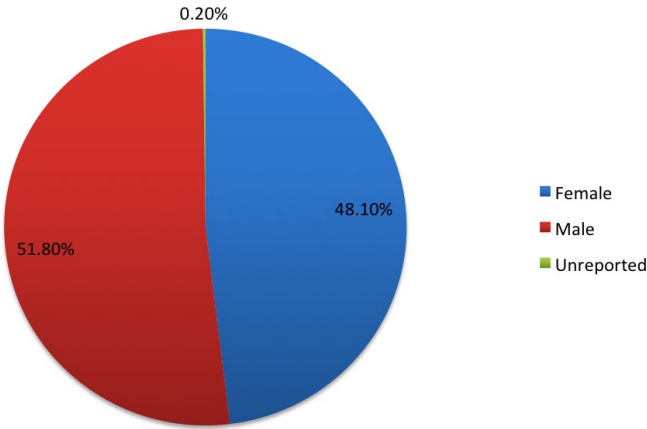
Our Graduate Students

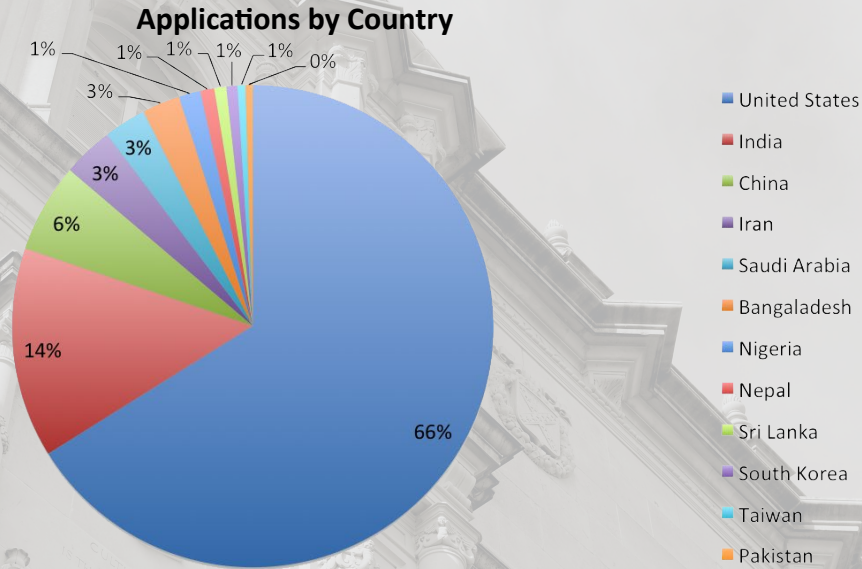
Our students come from every U.S. state and from all corners of the world. We celebrate our rich diversity and enjoy the benefits it brings to our intellectual community and to the fabric of our society.

Ethnicity



Gender





International Applications

- The Graduate School cultivates and facilitates international agreements for collaboration, student exchange, and joint degree programs. Some 30 new agreements have been made since 2013.
- There are 179 sponsored international graduate students which is an increase of 115% since 2013.

Recruiting for Excellence

Texas Tech's position as a top-tier research university depends on the size, scope, and quality of its graduate enterprise. The Graduate School has a number of programs that help attract and support top-quality graduate students.

Recruitment Efforts

The Graduate School's recruiting efforts bring Texas Tech to a diverse range of prospective graduate students.

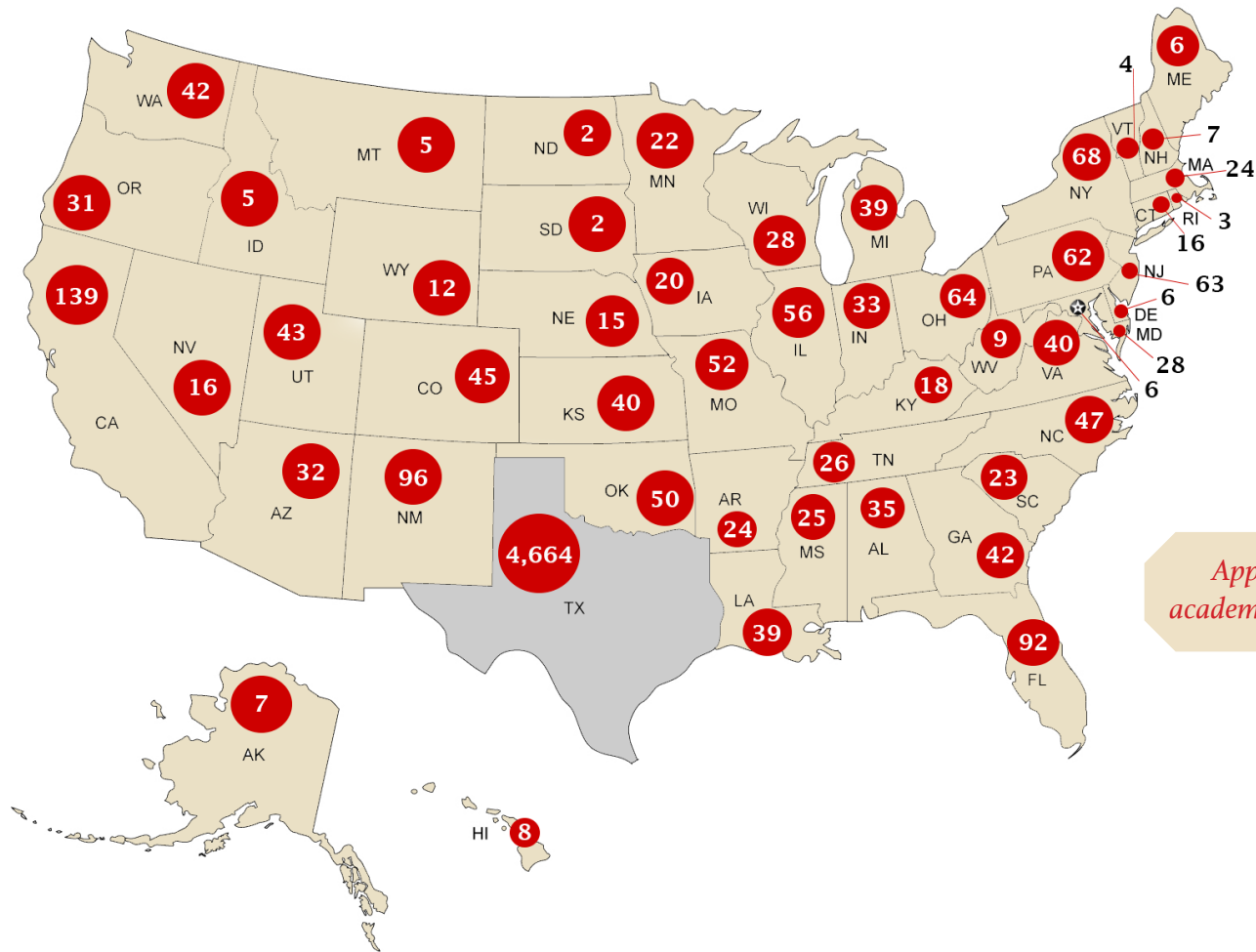
- State, national, and international recruiting events
- Assisting academic departments with their recruitment efforts
- Utilizing online recruiting platforms
- Connecting with working professionals as well as with prospective graduate students from historically underrepresented groups

Recruitment Fellowships

- Presidential Fellowships provide a stipend of \$34,000, tuition, and small research and travel allowance for up to five years. Ten new fellows are funded each year.
- Recruitment Fellowships augment department stipends for up to four years for doctoral students in order to make competitive offers.
- 150 recruitment fellowships were awarded last year.

Application Statistics

- 42.6% of master's applicants accepted
- 30.4% of doctoral applicants accepted
- Since academic year 2012-2013, Verbal GRE scores have increased from 44th to 48th percentile and Quantitative GRE scores have increased from 39th to 59th percentile.



*Applications from
academic year 2016-2017*

Advancing Student Success

The Graduate School is committed to helping students succeed in their programs and to assure that they have the skills they need to enter and succeed in the workforce.

Professional & Career Development

National surveys of employers and of our alumni indicate the need for professional development. Our program develops competencies in six core areas. More than 350 events were held during 2016-2017.

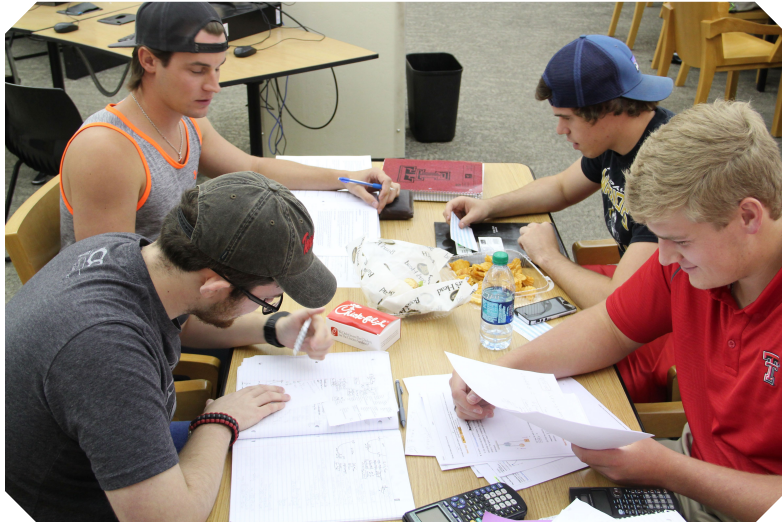


Student Life Activities

Regular social events and group activities, such as stress management sessions, occur multiple times throughout the semester.

Graduate Center

- The Graduate Center located in the basement of the Administration Building is available 24/7 and is the nexus for professional and career development events and provides space for networking, meetings and conferences, relaxation, and quiet study.
- A coffee bar along with student support and academic support services are available including the Graduate Writing Center and Statistical Consulting Services.



Fellowships

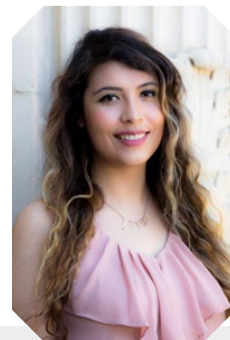
- 250 fellowships awards ranging from \$500-30,000 are available to new and continuing students, both full-time and part-time, on a competitive basis.
- Doctoral Dissertation Completion Fellowship awards enable doctoral students near the end of their programs to focus exclusively on their dissertation research to facilitate degree completion. Forty-five awards were offered last year.
- The Graduate School assists students developing and submitting fellowship applications to external sponsors (e.g., National Science Foundation).

Graduate Student Research Support Program

The Graduate Student Research Support Program offered in collaboration with The CH Foundation, the Graduate Student Advisory Council, and Parent and Family Relations provides up to \$40,000 to assist students with research-related expenses

Student Travel Program

This program matches department support to enable graduate students to present their work at professional conferences. Over 500 students were supported.



The Helen DeVitt Jones Graduate Fellowship will tremendously help in supporting my education without placing a financial burden on my future. - **Ivette Noriega**

PhD Candidate in Human Development and Family Studies

Where Students Go

Our graduate students gain the expertise, creativity, and courage to take on the world's most complex challenges. They enter every sector of the economy and make significant and lasting contributions locally, nationally, and internationally.

Degrees Awarded 2016-2017

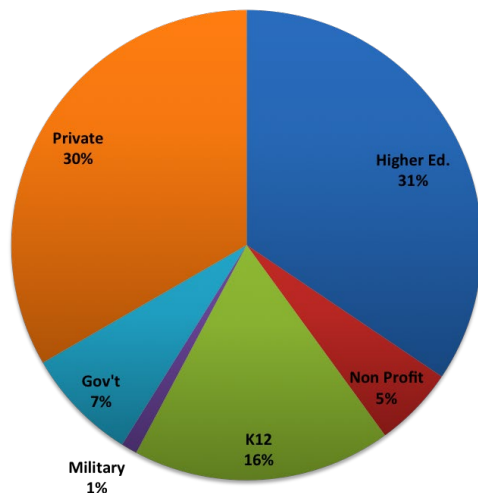
346 doctoral degrees*

1,581 masters degrees

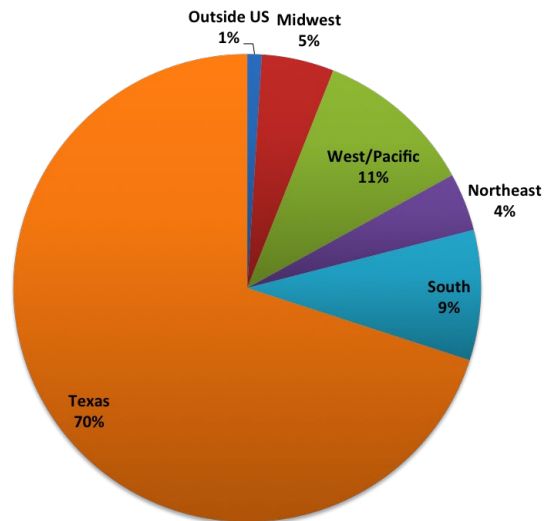
227 graduate certificates

*doctoral degrees awarded ranks 50th (top 12%) in the US

Employment Sector



Employment Location







TEXAS TECH UNIVERSITY
Graduate School™

Texas Tech University Graduate School | Administration 328
P: 806.742.2787 | gradschool@ttu.edu | gradschool.ttu.edu