



Texas Tech University Band & Orchestra Camp

Double Bass Audition Materials (2017)

For each of the categories below, please prepare and perform the scale/etude/and orchestral excerpt that BEST DEMONSTRATES your current ability level.

****Please consult your orchestra teacher and/or private lesson instructor to help guide you.*

You will audition for one of the following ensembles:

Orchestra 1—Texas Tech Symphony

Advanced

Orchestra 2—Matador Orchestra

Intermediate

Orchestra 3—Red Raider String Orchestra

Developing

Each audition will consist of:

Section I: Scales

Section II: Etudes

Section III: Short Excerpt from a prepared solo

Orchestra 1—Texas Tech Symphony

Section I: Scales

Texas Tech Symphony (Advanced)

F Major Scale Fast Fingering 3 Octaves

Double Bass

Mark Morton

1 E 4 A 1 4 D 1 2 G 1 2 1 4 1 2 1 2 + 1 2 + 1 2

22 3 2 1 + 2 1 1 2 1 4 1 G 2 1 0 D 2 1 0 A 4 1 0 E 4 1

Detailed description: This musical score is for a double bass player. It consists of two staves. The first staff is in bass clef with a key signature of one flat (Bb). It contains the first 21 notes of the F major scale (F, C, G, C, F, C, G, C, F, C, G, C, F, C, G, C, F, C, G). Above the notes are fingering numbers: 1, 4, 0, 1, 4, 0, 1, 2, 0, 1, 2, 1, 4, 1, 2, 0, 1, 2, +, 1, 2. Above the first few notes are chord labels: E, A, D, G. The second staff is in treble clef with a key signature of one flat. It contains the last 11 notes of the F major scale (G, C, F, C, G, C, F, C, G, C, F, C). Above the notes are fingering numbers: 3, 2, 1, +, 2, 1, 0, 2, 1, 4, 1, 2, 1, 0, 2, 1, 0, 4, 1, 0, 4, 1. Above the first few notes are chord labels: G, D, A, E.

F Major Arpeggio Fast Fingering 3 Octaves

Double Bass

Mark Morton

1 E A 1 D 4 G 1 G 3 + 3 + 3 G 1 D 4 1 A 0 E 1

Detailed description: This musical score is for a double bass player. It consists of two staves. The first staff is in bass clef with a key signature of one flat. It contains the first 14 notes of the F major arpeggio (F, C, G, C, F, C, G, C, F, C, G, C, F, C). Above the notes are fingering numbers: 1, 0, 1, 4, 1, 4, 1, 3, +, 3, +, 3, 1, 4, 1, 0, 1. Above the first few notes are chord labels: E, A, D, G. The second staff is in treble clef with a key signature of one flat. It contains the last 10 notes of the F major arpeggio (G, C, F, C, G, C, F, C, G, C). Above the notes are fingering numbers: 3, 2, 1, 3, 1, 0, 3, 1, 4, 1, 4, 1, 0, 2, 1, 0, 2, 1, 0. Above the first few notes are chord labels: G, D, A, E.

E Melodic Minor Fast Fingering 3 Octaves

Double Bass

Mark Morton

0 E 1 2 A 1 4 2 4 D 1 2 D 1 4 G 1 4 1 3 1 3 1 2

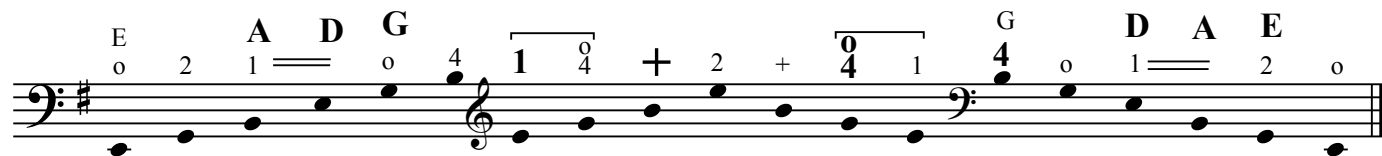
22 3 2 1 3 1 0 3 1 4 1 G 4 1 0 D 4 1 0 A 2 1 0 E 2 1 0

Detailed description: This musical score is for a double bass player. It consists of two staves. The first staff is in bass clef with a key signature of two sharps (D major). It contains the first 14 notes of the E melodic minor scale (E, B, F#, B, E, B, F#, B, E, B, F#, B, E, B). Above the notes are fingering numbers: 0, 1, 2, 0, 1, 4, 2, 4, 1, 2, 1, 4, 1, 4, 1, 4, 1, 3, 1, 3, 1, 2. Above the first few notes are chord labels: E, A, D, D, G. The second staff is in treble clef with a key signature of two sharps. It contains the last 11 notes of the E melodic minor scale (B, F#, B, F#, B, F#, B, F#, B, F#, B, F#, B). Above the notes are fingering numbers: 3, 2, 1, 3, 1, 0, 3, 1, 4, 1, 4, 1, 0, 4, 1, 0, 2, 1, 0, 2, 1, 0. Above the first few notes are chord labels: G, D, A, E.

E Minor Arpeggio Fast Fingering 3 Octaves

Double Bass

Mark Morton



Section II: Etude

Texas Tech Symphony (Advanced)

Edited by FRED ZIMMERMANN **BASS** **RODOLPHE KREUTZER** (1766-1834)

Allegro moderato 3

The etude consists of five staves of bass clef notation. It features extensive fingerings, including triplets and various articulations. Dynamics such as *mf* and *mezzo* are indicated. The piece concludes with a double bar line and a final bass clef symbol.

Section III: Short Excerpt from a prepared solo

Orchestra 2—Matador Orchestra

Section I: Scales

Matador Orchestra (Intermediate)

F Major Scale Fast Fingering 2 Octaves Low

Double Bass

Mark Morton

Musical notation for the F Major Scale Fast Fingering 2 Octaves Low. The scale is written on a bass clef staff with a key signature of one flat (Bb). The notes are E, A, D, G, Bb, C, F, Bb, C, F, A, D, G, Bb, C, F, E. Fingerings are indicated by numbers 1-4 above the notes. The sequence of fingerings is: 1 4, o 1 4, o 1 2, o 1 2, 1 4, 1 2, 1 4, 1 2, 1 o, 2 1 o, 4 1 o, 4 1.

F Major 7 Arpeggio Fast Fingering 2 Octaves Low

Double Bass

Mark Morton

Musical notation for the F Major 7 Arpeggio Fast Fingering 2 Octaves Low. The arpeggio is written on a bass clef staff with a key signature of one flat (Bb). The notes are E, A, D, G, Bb, C, F, Bb, C, F, A, D, G, Bb, C, F, E. Fingerings are indicated by numbers 1-4 above the notes. The sequence of fingerings is: 1 o, 2 1 2 1 4, 1 2 1, 4 1 2 1 2 o, 1.

G Melodic Minor Scale Fast Fingering 2 Octaves Low

Double Bass

Mark Morton

Musical notation for the G Melodic Minor Scale Fast Fingering 2 Octaves Low. The scale is written on a bass clef staff with a key signature of two flats (Bb, Eb). The notes are E, A, D, G, Bb, C, F, Bb, C, F, A, D, G, Bb, C, F, E. Fingerings are indicated by numbers 1-4 above the notes. The sequence of fingerings is: 4 o 1 4, o 1 4, o 1 4, 1 4, 1 3 2 3 1 2 1, 4 1 1 o, 4 1 o, 4 1 o, 4.

G Minor Arpeggio Fast Fingering 2 Octaves Low

Double Bass

Mark Morton

Musical notation for the G Minor Arpeggio Fast Fingering 2 Octaves Low. The arpeggio is written on a bass clef staff with a key signature of two flats (Bb, Eb). The notes are E, A, D, G, Bb, C, F, Bb, C, F, A, D, G, Bb, C, F, E. Fingerings are indicated by numbers 1-4 above the notes. The sequence of fingerings is: 4 1 o, 1 2, 1 3 1, 2 1 o, 1 4.

Section II: Etude

Matador Orchestra (Intermediate)

1
♩ = 92

(4 4)

(4 4)

1 4 2 4 1 4 1 4 4 4 1 4 4

4 / 1 4 4 2 1 / 4 2 / 1 0 2 2 1 / 1 4

(4 4 4) (4 4) 1 (4 4 4) 1 1 (4 4)

2 1 4 4 4 1 2 / 1 4 4 / 1 2 / 1 4 1 4

1 4 1 1 1 1 2 1 / 0 2

♩ = 76 50

1 (4 4)

2 2 1 / 1 4 4 2 4 1 4 4 4 / 1 2 2

1 (1) 1 1 1 4 1 / 4 1 4 4 1 1 4 4

Section III: Short Excerpt from a prepared solo

Orchestra 3—Red Raider String Orchestra

Section I: Scales

Red Raider Orchestra (Developing)

Bb Major Scale Fast Fingering 1 Octave Low

Mark Morton

Double Bass

Musical notation for the Bb Major Scale Fast Fingering 1 Octave Low. The notation is on a bass clef staff with a key signature of two flats (Bb). The scale is written as a sequence of eighth notes. Above the notes are fingerings: 1, 4, 0, 1, 4, 0, 2, 4, 2, 0, 4, 1, 0, 4, 1. Above the notes are chord symbols: A, D, G, D, A. The scale ends with a double bar line.

Bb Major Arpeggio 1 Octave Low

Mark Morton

Double Bass

Musical notation for the Bb Major Arpeggio 1 Octave Low. The notation is on a bass clef staff with a key signature of two flats (Bb). The arpeggio is written as a sequence of eighth notes. Above the notes are fingerings: 1, 4, 1, 1, 1, 4, 1, 1, 0, 4, 0, 1. Above the notes are chord symbols: A, D, G, D, A, A, D, G, D, A. The arpeggio ends with a double bar line.

D Melodic Minor Scale Fast Fingering 1 Octave Low

Mark Morton

Double Bass

Musical notation for the D Melodic Minor Scale Fast Fingering 1 Octave Low. The notation is on a bass clef staff with a key signature of one flat (Bb). The scale is written as a sequence of eighth notes. Above the notes are fingerings: 0, 1, 2, 0, 1, 4, 2, 4, 1, 2, 1, 0, 2, 1, 0. Above the notes are chord symbols: D, G, D. The scale ends with a double bar line.

D Minor Arpeggio 1 Octave Low

Mark Morton

Double Bass

Musical notation for the D Minor Arpeggio 1 Octave Low. The notation is on a bass clef staff with a key signature of one flat (Bb). The arpeggio is written as a sequence of eighth notes. Above the notes are fingerings: 4, 1, 4, 4, 4, 1, 4, 0, 1, 4, 1, 0. Above the notes are chord symbols: A, D, G, D, A, D, G, D. The arpeggio ends with a double bar line.

Section II: Etude

Red Raider Orchestra (Developing)

Scarborough Fair

The musical score for "Scarborough Fair" is written in bass clef with a key signature of one sharp (F#) and a 3/4 time signature. It consists of three staves of music. The first staff begins with a D chord and contains notes with various fingerings: a square fingering symbol, a V-shaped fingering, and numbers -2 and 1. The second staff continues with G chords and includes fingerings -1, 4, -1, 4, -4, and -4. The third staff concludes the piece with notes and fingerings 0, 0, and 0. The score includes slurs, accents, and dynamic markings.

Section III: Short Excerpt from a prepared solo