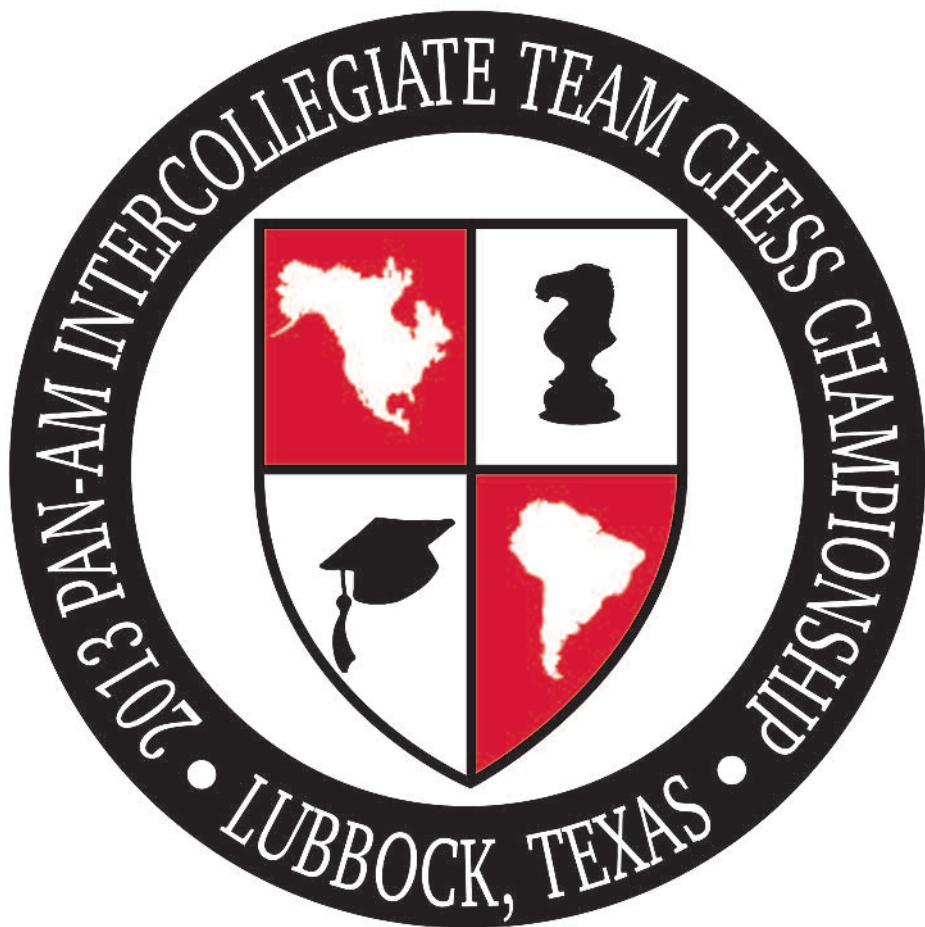


*~Diamond Jubilee~
60th Anniversary!*



**Overton Hotel & Conference Center
Lubbock, Texas
December 27-30, 2013**

Schedule of Events

All events are in the Overton Hotel.

Thursday, December 26th

6 p.m. – 8 p.m.: registration and gift-bag pickup
Second floor, outside playing hall, Horizon Ballroom

Friday, December 27th

10:30 a.m. – 4 p.m.: registration and gift-bag pickup
Second floor, outside playing hall, Horizon Ballroom

4 p.m. (no later than): Final deadline for registration;
Lineups due to tournament director.

4 p.m. – 5 p.m.: Reception and Dinner (fellowship and food!)
Sunset C (first floor)

6 p.m.: Round One
Second floor, tournament hall

Saturday, December 28th

10 a.m.: Round Two
Second floor, tournament hall

5 p.m.: Round Three
Second floor, tournament hall

Sunday, December 29th

10 a.m.: Round Four
Second floor, tournament hall

5 p.m.: Round Five
Second floor, tournament hall

Monday, December 30th

9 a.m.: Round Six
Second floor, tournament hall

3 p.m.: Awards Ceremony
Second floor, tournament hall



**STATE OF TEXAS
OFFICE OF THE GOVERNOR**

Greetings:

As Governor of Texas, I am pleased to welcome all of those in attendance at the 2013 Pan-American Intercollegiate Chess Team Championship at Texas Tech University.

What an outstanding occasion this is as you convene for what I am certain will be an unforgettable "World Series of College Chess." Chess demands concentration, logic and analysis, as well as foresight and a high level of mental discipline. Participants, I applaud your instructors, families and others who have helped you to reach this level of achievement. Determined and diligent, you have prepared for this tournament and will now give your best. Excellence in chess fosters success both inside and outside of the classroom, and I have every expectation that yours will be futures of great accomplishments.

To our visitors from near and far, I hope you will enjoy all that Lubbock has to offer. Renowned for its Texas hospitality, historical landmarks and exciting community events, there is something here for everyone.

First Lady Anita Perry joins me in wishing you a memorable event.

Sincerely,

A large, stylized handwritten signature of Rick Perry in black ink.

Rick Perry
Governor



TEXAS TECH UNIVERSITY SYSTEM

Office of the Chancellor

December 27, 2013

Dear Guest:

On behalf of the Texas Tech University System, I extend a warm West Texas welcome to each of you. We are pleased to host the 2013 Pan-American Intercollegiate Chess Team Championship here in Lubbock, and we are honored that competitors from all over the world will be joining us.

While you are here, I hope you will have time to enjoy the beauty of our campus and the friendliness of our community. At Texas Tech, we provide more than a great education through various programs that prepare our students for success in their future careers. Whether you are preparing to attend college, considering graduate school, or have additional educational pursuits, the TTU System has something to offer you.

We wish you the best of luck in the competition and hope you enjoy your stay in Lubbock.

Yours truly,

A handwritten signature in black ink that reads "Kent Hance". The signature is written in a cursive style with a large, stylized "K" and "H".

Kent Hance



TEXAS TECH UNIVERSITY™

Office of the President

December 27, 2013

Dear Participants:

Welcome to Texas Tech University!

We are honored to host the 2013 Pan-American Intercollegiate Team Chess Championship. These next few days will be a very exciting time for you and I am excited for the opportunities you will have while on our campus. Each of you brings a great deal of knowledge and enthusiasm for Chess and this will be a vital part of your success. This tournament not only allows you to showcase your talent and skill, but also will allow you to become acquainted with and share knowledge amongst your fellow competitors. It is my hope that you take every opportunity presented to make the most of your experience.

I hope you enjoy your time on our campus and that you have an opportunity to explore all that Texas Tech University has to offer.

Best wishes for an exciting tournament.

Sincerely,

A handwritten signature in black ink that reads "M. Duane Nellis".

M. Duane Nellis
President

Dear 2013 Pan Am participants,

On behalf of the United States Chess Federation's College Chess Committee, I would like to welcome you to the 2013 Pan-American Intercollegiate Team Chess Championships (Pan-Ams). We are very grateful to Al Lawrence, Alex Onischuk, Hal Karlsson, and all the fine folks at Texas Tech University for bringing this prestigious tournament to Lubbock, Texas.

The Pan-Ams as we know them began in 1946, so you are part of a very important tournament with a long and distinguished history. We hope you take advantage of your time here to see the campus of Texas Tech University and some of the interesting sites the city of Lubbock has to offer. Please enjoy the high-level competition and the opportunity to catch up with your fellow collegiate chess players from other universities. We look forward to seeing you a year from now on South Padre Island, Texas!

Best regards,
Russell S. Harwood
Chair, College Chess Committee



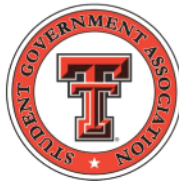
Greetings!

It is an absolute pleasure to welcome you on behalf of the 33,000 students here at Texas Tech University. While many students are away for the holidays, you are competing on behalf of your university. We would like to thank you for your sacrifice for your university and wish you the best while competing in the 2013 Pan-Am Championships. Students like you, who continue competing through the holidays, bring true prestige to our universities. Win or lose this time, you will all walk away champions.

During your time in Lubbock, I urge you to enjoy one of the many attractions the city has to offer or simply enjoy a West Texas sunset. We wish you the best visit and the best tournament possible.

Regards, and WRECK 'EM!

Luke P. Cotton
Student Body President



*Dinner Reception for the 60th Anniversary
Pan-American Intercollegiate Team
Chess Championship*

4 p.m., December 27

Sunset C, Overton Hotel, Lubbock, Texas

Sponsored by Dr. Joseph & Jennifer Hancock & Family

Introductions by Al Lawrence, Director, Texas Tech Chess Program

Presentation of the Flag by the Lubbock County Sheriff's Office Honor Guard

Singing of the National Anthem by Ms. Natalie D'Anne Head

Welcome by Dr. Lawrence Schovanec, Provost, Texas Tech University

Welcome to Lubbock by Floyd Price, Councilman for District Two

"From Here, It's Possible"

Paul Frazier, Ed.D.

Assistant Vice President

Division of Institutional Diversity, Equity & Community Engagement

Introduction of National Tournament Director Franc Guadalupe

Introduction of Dr. Hal Karlsson, Associate Professor, Texas Tech University
Faculty Advisor to the Knight Raiders Chess Club

Dinner

and

Music by the "Final Four Quartet"

Eva Haraldsdóttir - violin I

Dilini Senadheera - violin II

Jordan Kirksey - viola

Melissa Viator - cello

History of the Pan-Ams



“The Pan-Ams” are open to all post-secondary schools in North America, Central America, South America and the Caribbean.

The championship is rich in college tradition. The first Pan-Ams took place in 1946 (but the championship traces its heritage to a U.S. university championship going back even further) and was held biennially until 1962, when the event was made annual and has indeed been held every year since then.

The top four qualifying schools from the Pan-Ams go on to compete in the Final Four of college chess, held in the spring. The winner is considered national champion and takes home the President's Cup.

Wikipedia contributors. “Pan American Intercollegiate Team Chess Championship.” Wikipedia, The Free Encyclopedia, 4 May. 2013. Web. 15 Dec. 2013.

#	Year	Teams	City	Champion(s)
1	1946	13	New York City	CC of NY
2	1948	14	New York City	CC of NY
3	1950	15	New York City	Columbia U.
4	1952	12	New York City	Columbia U.
5	1954	8	New York City	Fordham U.
6	1956	14	Philadelphia	U. of Chicago
7	1958	10	Cleveland	U. of Chicago
8	1960	13	Princeton, N.J.	Columbia U.
9	1962	28	Philadelphia	Brooklyn College
10	1963	28	Notre Dame	U of Tx., Berkeley
11	1964	21	Los Angeles	San Jose State U.
12	1965	27	New York City	U. of Toronto
13	1966	27	State College, Pa.	MIT
14	1967	24	Hoboken, N.J.	Berkeley
15	1968	49	Chicago	U. of Chicago
16	1969	43	Montreal	McGill U
17	1970	51	Evanston, Ill.	MIT
18	1971	55	Toronto	Columbia U.
19	1972	108	Columbus, Ohio	U. of Chicago
20	1973	73	Atlanta	U. of Toronto, U of Chicago
21	1974	89	Louisville	U. of Toronto
22	1975	123	Columbus, Ohio	U. of Nebraska., Harvard U.
23	1976	108	New York City	U. of South Fl.
24	1977	67	St. Louis	U. of Pennsylvania
25	1978	85	Chicago	Yale U.
26	1979	42	Los Angeles	U. of Florida
27	1980	52	Atlanta	U. of Toronto
28	1981	71	New York City	U. of Toronto
29	1982	62	Columbus, Ohio	U. of Toronto
30	1983	59	Worcester, Mass.	Yale U.
31	1984	59	Kitchener, Ont.	Columbia U.
32	1985	60	New Brunswick, N.J.	Rhode Island College
33	1986	53	Providence, R.I.	U. of Chicago, Harvard U.
34	1987	38	Columbus, Ohio	Yale U.
35	1988	36	New Brunswick, N.J.	Harvard U.
36	1989	19	Salt Lake City	Berkeley, Harvard U.
37	1990	30	Cambridge, Mass.	Harvard U.
38	1991	33	Chicago	U. of Il. Champaign-Urbana
39	1992	33	Detroit	U. of Minnesota
40	1993	31	DeLand, Fl.	Boro. Manhattan Comm.C.
41	1994	31	Providence, R.I.	Boro. Manhattan Comm. C.
42	1995	36	New York City	NYU, Brooklyn C.
43	1996	36	Baltimore	UMBC
44	1997	38	Bowling Green, Ky.	Boro. Manhattan Comm. C.
45	1998	20	Dallas	UMBC
46	1999	31	Toronto	UMBC
47	2000	21	Milwaukee, Wis.	UMBC, UTD
48	2001	29	Providence, RI.	UMBC, UTD
49	2002	30	Miami	UMBC-B
50	2003	30	Miami	UTD
51	2004	23	Wichita, Kan.	UTD
52	2005	27	Miami	UMBC
53	2006	24	Washington, D.C.	UTD-B, UTD-A
54	2007	28	Miami	UTD
55	2008	29	Dallas	UMBC, UTD-B
56	2009	28	So. Padre Island, Tex.	UMBC
57	2010	28	Milwaukee, Wis.	UTD
58	2011	28	Fort Worth, Tex.	UTD
59	2012	44	Princeton, N.J.	UTD, Webster-B, Webster-A, U of Illinois
60	2013	?	Lubbock, Tex.	?

A Brief History of the Texas Tech Knight Raiders

The Texas Tech Knight Raiders Chess Club became an official student organization in 2003, organized by a group of students, together with faculty members Drs. Hal Karlsson and Eduardo Cabrera. The club name puts together the name of the chess piece that creates the most surprise on the chessboard (and is no relation to former Tech basketball coach Bobby Knight!) with the word “Raiders” from, of course, “Red Raiders.” The club motto, “Check ‘em Tech,” pays homage to the famous line “Wreck ‘em, Tech,” from the school fight song, “Fight, Raiders, Fight!”

Texas Tech offered its first chess scholarships in 2005. In 2007, thanks to generous sponsors, Texas Tech began offering significant scholarships to highly

qualified students. In 2011 and 2012, Tech won the “President’s Cup,” the national championship of collegiate team chess. In 2013 the Texas Tech Chess Program was founded, concentrating not only on competition but on outreach to the community and beyond. The Knight Raiders are current Texas State team and individual co-champions, Southwest Regional team and individual champions, and multiple division Pan-Am champions.

At this gathering, Texas Tech Chess and the Knight Raiders will for the first time host the Pan-American Intercollegiate Team Chess Championship, which has been regularly held since 1946 and traces its heritage back even further. We’re especially honored to host the tournament’s diamond jubilee edition!



Check ‘em, Tech!

Acknowledgments

2013 Pan-American Intercollegiate Team Chess Championship Organizing Committee:

Alfonso Almeida, Luke Cotton, Peggy Flores, Mike Gunn, Brett James,
Dr. Haraldur Karlsson, Al Lawrence, Trey Modlin, GM Alex Onischuk,
Dr. Jerry Perez, Dr. Igor Volobouev

The Organizing Committee gives thanks to the many who helped make this 60th anniversary championship possible, including the following individuals, who deserve our special gratitude:

Kari Abitbol (Assistant Director, School of Law)

Olga Achourkina (TTU Chess Program)

Jane Bell (Sr. Dir., TTU International Cultural Center)

Randi Rivers-Carnley (Rawls College of Business)

Dominick Casadonte (Interim Dean, Graduate School)

William H. Crafton (owner, Gardski's Restaurant)

Stephanie Criswell (Scarborough Specialties)

The Dario Family (One Guy from Italy Restaurant)

Darby Dickerson (Dean, TTU School of Law)

Julie Doss (Assistant Dean, TTU School of Law)

Paul Frazier, (AVP, TTU Institutional Diversity)

Dr. Steve Fritz (Dean, TTU Honors College)

Michael Giesselmann (Chair, TTU Electrical and Computer Engineering)

Dr. Joseph and Jennifer Hancock, Esq., & family

Scott Hein (Rawls College of Business)

Lori Hernandez Criswell (Scarborough Specialties)

The Hibdon Family

Ram Iyer (TTU Dept. of Mathematics & Statistics)

The Kleppa-Karlsson Family

Frank Komarek (Rawls College of Business)

Carol Korzeniewski (Chair, TTU Department of Chemistry and Biochemistry)

Magne Kristiansen (TTU Center for Pulsed Power and Power Electronics)

Lance Nail (Dean, Rawls College of Business)

Jeff Lee (Chair, TTU Dept. of Geosciences)

Roger Lichti (TTU Chair, Dept. of Physics)

Christopher Monico (Dept. of Mathematics)

Juan Muñoz (VP for Undergraduate Education and SVP for Institutional Diversity, Equity, and Community Engagement)

Tibor Nagy (TTU Vice Provost for International Affairs)

M. Duane Nellis (President, TTU)

Stephen Ekwaro-Osire (Associate Dean, Whitacre College of Engineering)

Camille Patterson (TTU Office of International Affairs)

The Jerry Perez Family

Brian Shannon (TTU School of Law)

Jeff Williams (Dean, TTU College of Arts and Sciences)

Celeste Yoshinobu (TTU Dept. of Geosciences)

Billy Rizzo, (owner, Stella's Restaurant)

Thanks also to the staff of the Overton Hotel:

Shannon Baker, Senior Sales Manager; Erin Neel, Conference & Catering Manager



TEXAS TECH UNIVERSITY
Graduate School™

The organizers of the 2013 Pan-American Intercollegiate Team Chess Championship would like to offer special thanks to the U.S. Chess Federation and to our sponsors, recognized on the following pages, who made the event possible.

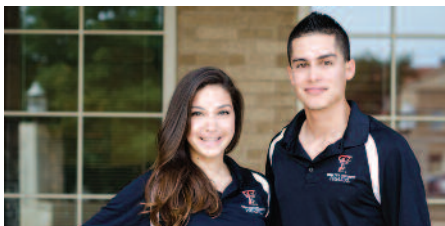


TEXAS TECH UNIVERSITY

Office *of the* President™



Texas Tech University is dedicated to creating and supporting an environment that allows all members of the university community to be academically and professionally successful. Through outreach and service, the university prepares faculty, staff, and students to be ethical leaders in a diverse and globally competitive world. This outreach and service has led to recognition by the **Education Trust** for high degree attainment by Hispanic and African-American students, **The Best Colleges** as one of the six best colleges for first-generation college students, **G.I. Jobs Magazine** for being a Military Friendly School, **Hispanic Outlook** for being a Top 50 institution for Hispanic degrees awarded and the **State of Texas** for being a Mother-Friendly campus.



For more information visit www.ttu.edu/diversity

UNIVERSITY

Honors
college



SCHOLARSHIPS

HONORS ARTS & LETTERS

**EARLY ACCEPTANCE
TO LAW SCHOOL**



UNDERGRADUATE RESEARCH



**FIRST-YEAR
EXPERIENCE
PROGRAM**



**HONORS
COMMUNITY**

**ENVIRONMENT
AND THE
HUMANITIES**

**TERRY
SCHOLAR
PROGRAM**



**STUDY
ABROAD**



**EARLY ACCEPTANCE
TO MEDICAL SCHOOL**

LETTER OF INTENT

A Promise For Tomorrow

In future support of the work of the **U.S. Chess Trust**, I want to provide for future generations and to ensure the continuity of services by the U.S. Chess Trust.

Therefore,

☐ I have made provision ☐ I will make provision

to support the U.S. Chess Trust by:

- ☐ making a bequest or endowment provision in my Will
- ☐ creating a charitable remainder or lead trust naming the U.S. Chess Trust as a beneficiary.
- ☐ establishing an endowment or special fund at the U.S. Chess Trust.
- ☐ directing the trustees or directors of my foundation to continue beyond my lifetime making an annual gift to the U.S. Chess Trust.
- ☐ Making an outright gift to the U.S. Chess Trust during my lifetime in the sum of \$_____.

This Letter of Intent represents my commitment to the work of the U.S. Chess Trust. It does not represent a legal obligation and may be changed by me at any time.

Whatever the amount of your gift, when you leave a legacy for the future of the U.S. Chess Trust, you are an important part of the Promise for Tomorrow.

Please send with your name, address, phone, and email contact information and email Barbara DeMaro at bduscf@aol.com (845-527-1167)



U.S. Chess Trust

*Please note that there is a required amount in order to be listed as a Future Legacy Donor. Write or send an email to Barbara DeMaro, bduscf@aol.com for this amount. Donations to the U.S. Chess Trust are tax-deductible. A 501(c)(3) organization. BD:08/03



TEXAS TECH UNIVERSITY

College of Arts & Sciences

The College of Arts & Sciences

Arts & Sciences embraces,
in one sweep, the discipline of
the hard sciences and the
breadth of the humanities.



Those who complete our programs
develop a renaissance mind-set,
ready to meet the challenges of
a global economy—with the sensitivity
to savor the personal rewards
of a life well lived.

. Office of the Dean .

. Faculty Division 806-742-3833 . Student Division 806-742-3833 .

. www.as.ttu.edu .

Special Thanks to Dr. Joseph & Jennifer Hancock & Family

Sponsors of our reception
for all contestants in the
Pan-American Intercollegiate
Team Chess Championship



TEXAS TECH UNIVERSITY

Department *of* Physics™



TEXAS TECH UNIVERSITY

Department *of* Geosciences™



TEXAS TECH UNIVERSITY

Department of Electrical
& Computer Engineering™

American Chess Equipment

Proud Sponsors of the Pan-Ams!

(714) 904-3400

4366 E. La Palma Ave.

Anaheim, CA 92807

www.amchesseq.com



TEXAS TECH UNIVERSITY

Center *for* Pulsed Power & Power Electronics™



TEXAS TECH UNIVERSITY

Rawls College *of* Business™

Check 'em, Tech!



Software Solutions For:
Civil Justice * Criminal Justice * Law Enforcement
County Government * Probation

We are proud supporters of the Texas Tech Chess Program.

P.O. Box 2248, Lubbock, Texas 79408, (806) 767-9500

Still paying \$\$\$ to play chess??
Play for FREE at  Chess.com



Join the world's largest chess community with over
7 million players from all around the world.



All Titled Players (incl. National and FIDE Masters!) get
FREE lifetime Diamond Memberships.

Create Your Free Account at Chess.com and Start Playing Today!



- Live Chess
- Correspondence
- Tournaments
- Team Matches

- Video Library
- Tactics Trainer
- Opening Explorer
- Computer Analysis

- Forums
- News
- Articles
- ChessTV





NORTH AMERICA

www.dgtnorthamerica.com

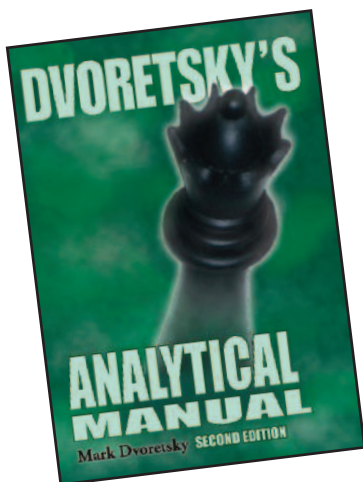


Russell Enterprises, Inc.

234 Depot Rd.

Milford, CT 06460

www.russell-enterprises.com





gardski's
LOFT

Proud Sponsors of the PanAms!

2009 Broadway

806.744.2391

www.gardskisloft.com

LUBBOCK MENSA

The organization for smart people like you!

Proud Sponsors of the PanAms!



Lubbock Mensa



*Texas Tech Law:
Talent. Teamwork. Tradition.*

Make your next move toward a
practice-ready legal career.

Find out how you can join our team of
champions at law.ttu.edu.



TEXAS TECH UNIVERSITY
School of Law™

**"Teamwork is a part of life—whether in
chess, law, or any other profession."**

—Konstantin Parkhomenko,
Texas Tech Law class of 2010
Gallagher & Kennedy
Sante Fe, New Mexico



TEXAS TECH UNIVERSITY

Office of International Affairs™



TEXAS TECH UNIVERSITY

Department of Chemistry & Biochemistry™



TEXAS TECH

U N I V E R S I T Y[®]

**Texas Tech welcomes all the competitors
to the diamond jubilee edition
of the
Pan-American Intercollegiate
Team Chess Championship!**



**Texas Tech
Knight Raiders
Chess Club**



**Texas Tech
Chess Program**

“From here, it’s possible!”