



**CATIE: A PARTNER IN RESEARCH,
EDUCATION AND INCLUSIVE GREEN
DEVELOPMENT**

Leida Mercado, PhD
Ricardo Padrón, MPS



BRIEF HISTORY

As US Agriculture Secretary, Henry A. Wallace championed the creation of a Research and Education Tropical Agriculture Institute, aiming to catalyze agricultural-driven economic development across Latin America and the Caribbean

1940

As Vice President, Henry Wallace initiated the creation of the Agricultural Sciences Institute in Turrialba, Costa Rica. The institute's key objectives were:

Land Use Planning

Natural Resource Conservation

Water Resource Management

Environmental Accounting and Economics

Advancement of Agribusiness Development

1943

Graduation of the inaugural Master of Science cohort

1947



CATIE'S GOVERNANCE

Three governance bodies

1. Inter-American Board of Agriculture
2. Superior Council of Ministers
(Agriculture Ministers of member countries)
3. Board of Directors.

REGIONAL MANDATE

- 13 member countries
- National offices

MEMBER
COUNTRIES

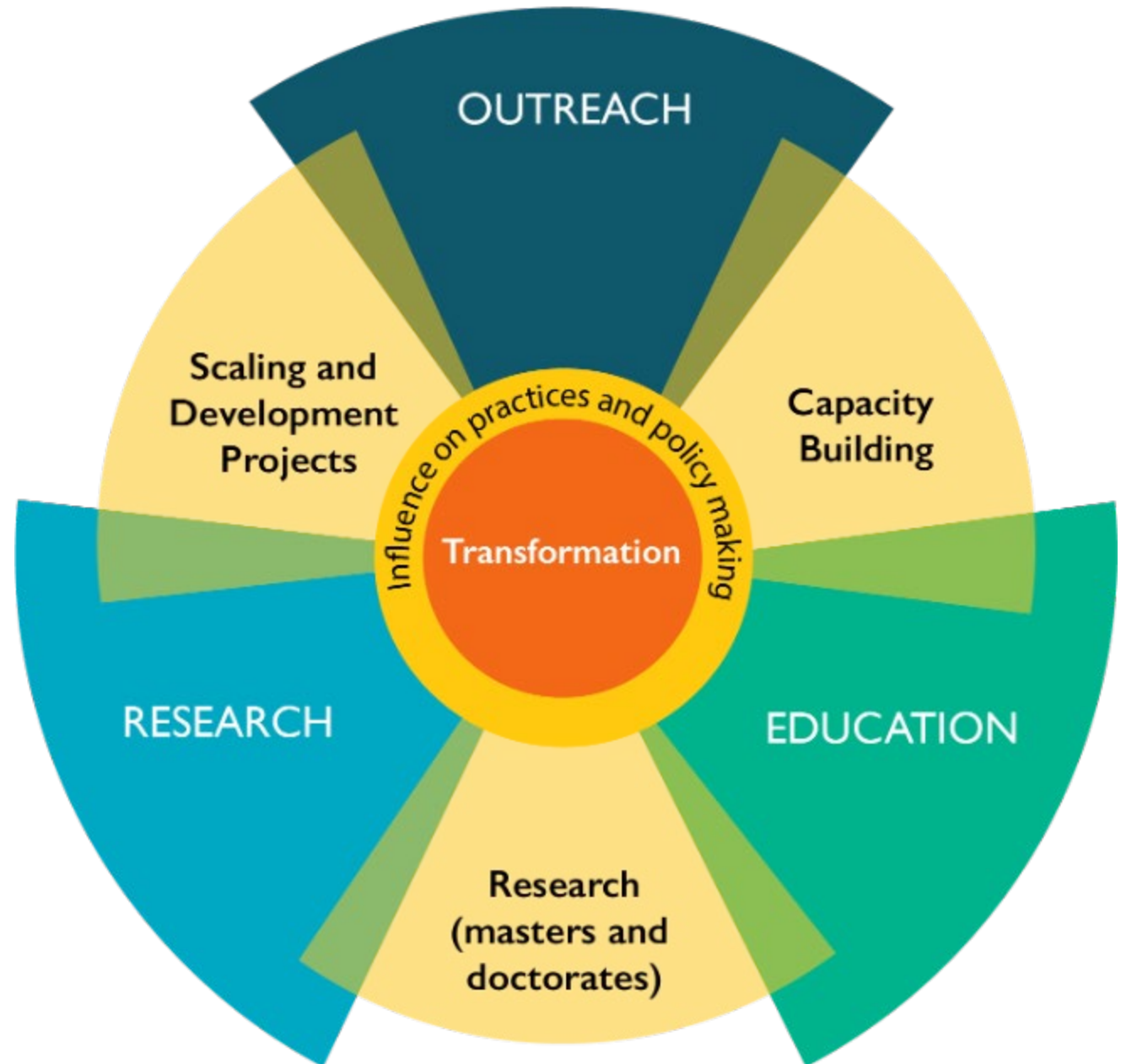
CATIE'S

VALUE PROPOSITION

CATIE is an international, private, non-profit organization headquartered in Costa Rica,.

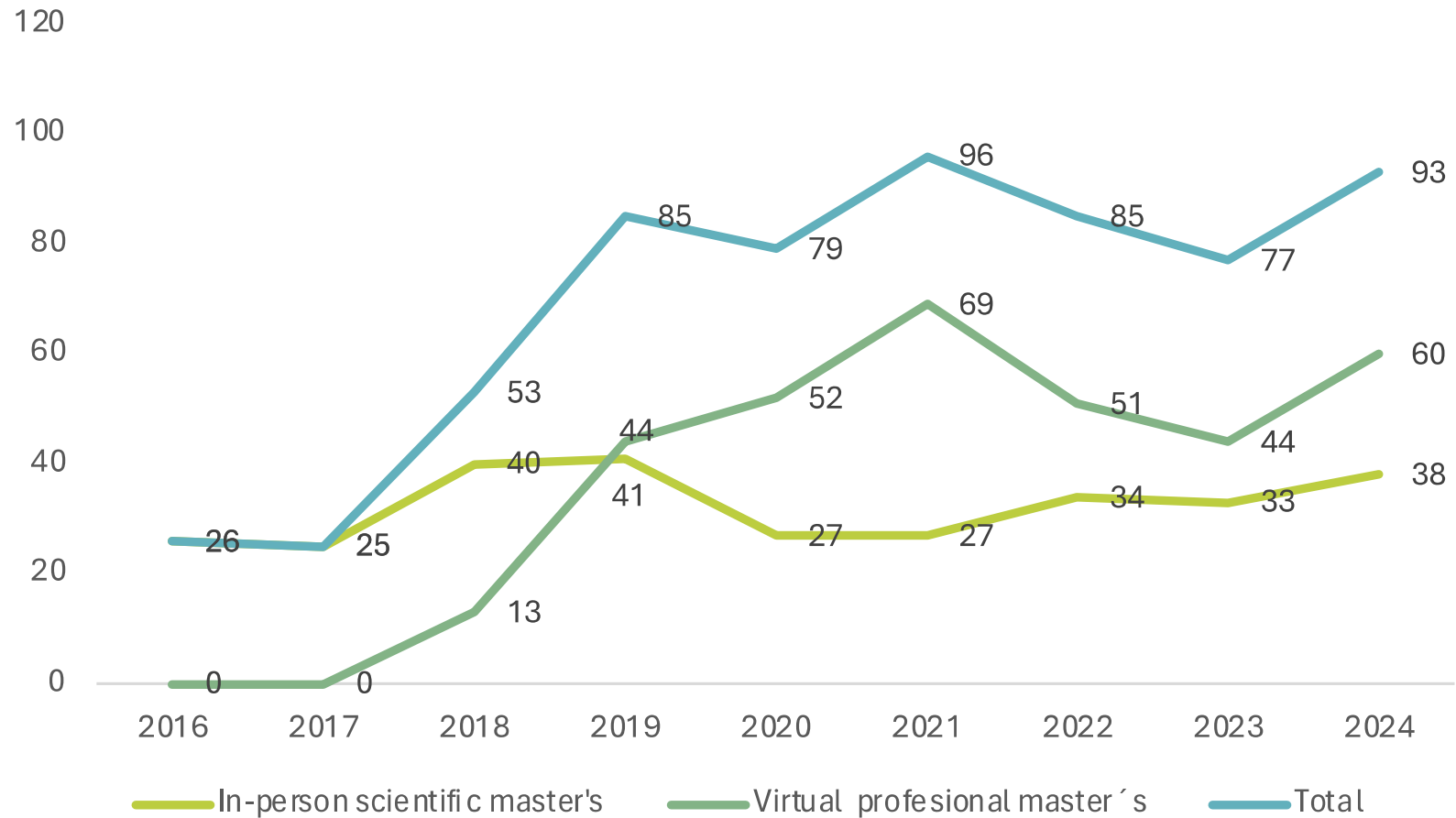
CATIE ´s interventions aim at fostering transformational change in the agriculture sector through:

- Integrating
 - Impact oriented research
 - Education: master's degrees, doctorates, and training (diplomas, courses and trainings).
 - Outreach by scaling solutions in joint actions with countries and in alliances with key partners.



EDUCATION

CATIE's transition to blended education



Academic Master's Programs:

1. Agroforestry and Sustainable Agriculture
2. Tropical Forests Management and Biodiversity
3. Integrated Watershed Management
4. Economy, Development and Climate Change

Professional Master's Programs (Virtual):

1. Integrated Watershed Management
2. Management of Agribusiness and Sustainable Markets
3. Sustainable and Regenerative coffee production



Capacity building

An average of 12,000 experts trained over the past decade in LAC countries by focusing on:

- Genetic improvement and agroforestry systems for coffee and cocoa
- Low-carbon livestock systems
- Climate-smart agriculture and water security
- Sustainable agribusiness
- Restoration of productive landscapes
- Economic valuation of environment and ecosystem services



38%
women



62%
men

In 2023, we implemented 240 training events, including diplomas, courses, and workshops, both virtual and in-person.

16 816 people trained

Study Abroad Programs



University	Women	Men	Total
Nebraska State University	5	19	24
Georgia University	6	1	7
Colorado State University	6	12	18
Nicholls University	12	7	19
Austin High School-Global Studies	46	108	154
Agnes Scott College	22		22
Ohio State University	13	1	14
Prairie View A&M University, Texas	12		12
Duke University	13		13
Verto Education Spring 23	20	3	23
Abeline Christian University	6	4	10
Kentucky State University	3	1	4
Alabama A&M University	40	20	60
Verto Education Fall 23	170	30	200
University of Toronto	40	10	50
Total	414	216	630

RESEARCH

Scientific platform enhanced by strategic global partnerships"



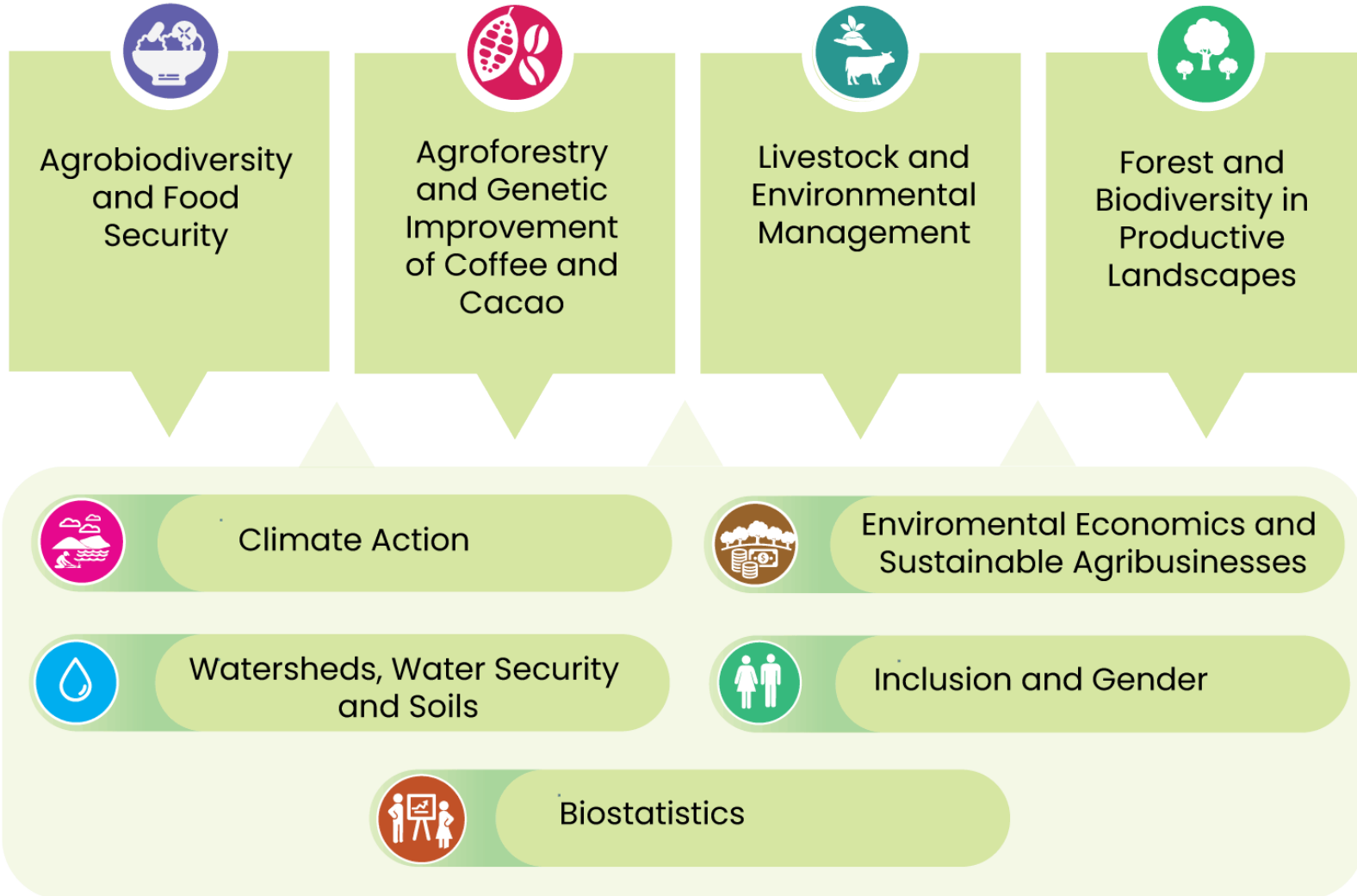
Examples of key collaborations with institutions from the United States

University of Wisconsin	 CALs Global COLLEGE OF AGRICULTURAL & LIFE SCIENCES UNIVERSITY OF WISCONSIN-MADISON
University of Vermont	 <i>The</i> UNIVERSITY <i>of</i> VERMONT
Texas Tech University	 TEXAS TECH UNIVERSITY Office of the Provost International Affairs
University of Idaho	 University of Idaho
World Resource Institute	 WORLD RESOURCES INSTITUTE

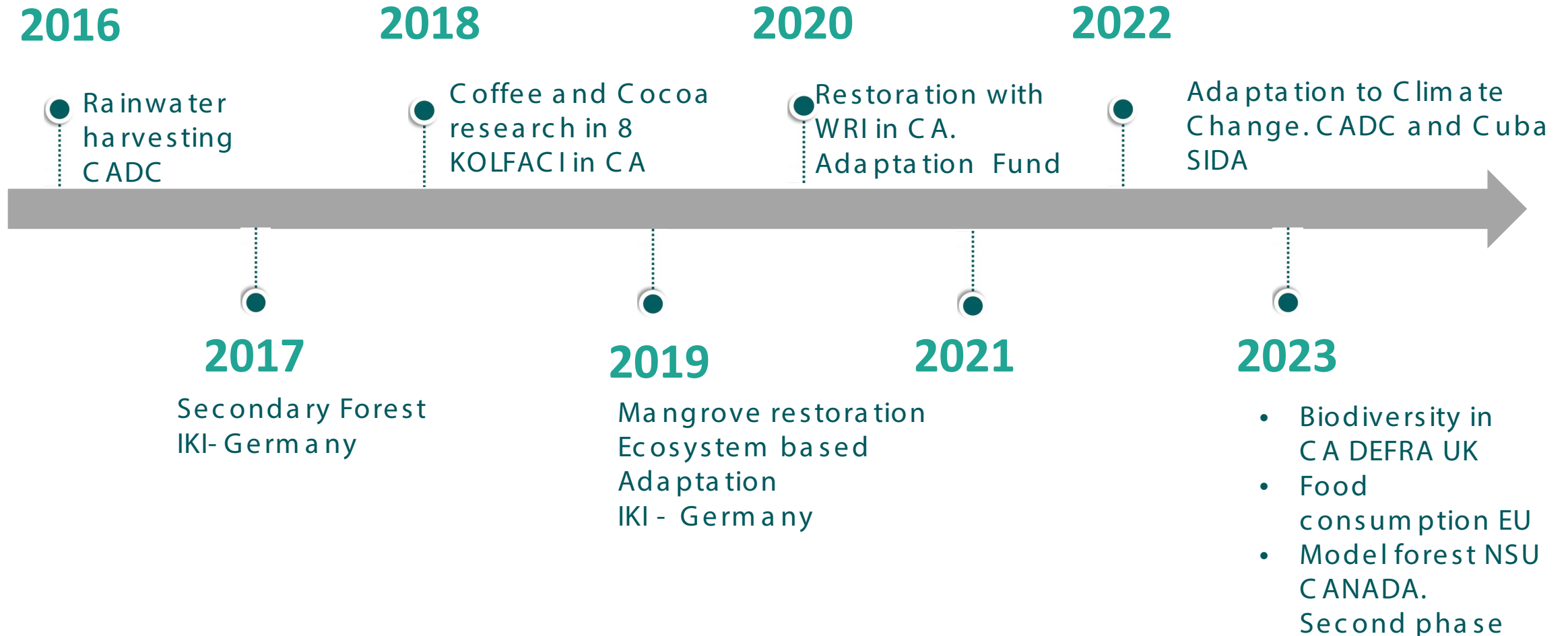
- Our research aims to translate discoveries into impactful contributions towards advancing the Sustainable Development Goals (SDGs) in Latin America and the Caribbean
- Our transdisciplinary approach engages external partners to create and implement innovative solutions addressing societal needs

Our research is developed around nine themes:





Strategic research-development projects



Geographic distribution



Regional research coffee program- Kolfalci



Regional research Cacao program- Kolfaci



Regional livestock low carbon prog - Mitigation Action Facility



Food security and nutrition (PINN, rain-water harvesting)



Forest -biodiversity and conservation



Mangrove and blue carbon



Environmental economics and agribusiness



Adaptation to climate change (ESCALAR)



Watershed and rain-water harvesting



STRATEGIC PROJECTS In a priority landscape

-  The Central American Dry Corridor
-  Taking adaptation innovations to scale - SIDA
-  Monitoring food security – European Union
-  Ecosystem based adaptation – GIZ-IUCN-CATIE
-  Landscape restoration - UK
-  Sustainable water management - IDB
-  Water Fund - IDB
-  NAMA-Livestock – NAMA FACILITY
-  AGRO-INNOVA – regenerative food production – IICA-
European Union
-  Water harvesting for Food Security - COSUDE



SCALING PROBED INNOVATIONS TO BUILD RESILIENCE IN THE CENTRAL AMERICAN DRY CORRIDOR (CA-DC)

- This four-year project (2022-2026) funded by Sweden, will address the negative impacts of climate change – drought aggravation and other extreme events - on the most vulnerable CADC communities
- This will be achieved using two main pathways and a cross-cutting inclusion and equity approach:
 - PATHWAY 1. Scaling Agricultural Innovations for Adaptation (rainwater harvesting and agroforestry in coffee and basic grains) using attractive business opportunities for rural youth as scaling mechanism.
 - PATHWAY 2. Ensuring an enabling environment (capacity development, governance and finance)



ESCALAR's expected outcomes and progress 2022-2023



Multi-stakeholder platforms support the scaling up of AIA and the strengthening-creation of Rural Enterprises



People identify benefits from implemented AIA



Youth participate in the strengthening-creation of Rural Enterprises



Key stakeholders are informed and possess the capacity to access financing

- **435 families** (37% led by women) implement Agricultural Innovations for Adaptation (AIA).
- **870 individuals**, including 92 decision-makers, trained on the benefits of AIA.
- **149 young people** (41% women) trained in establishing and/or strengthening rural enterprises.
- **18 youth-led ventures** supported with seed capital and in the incubation process.
- **1 policy instrument** approved and 3 in the process of approval to promote the scaling up of AIA.
- **Funding mobilized** for the implementation of rainwater harvesting innovations.



**Innovation and
Entrepreneurship Lab
For rural development in
LAC**

Activa is part of the Forests and Biodiversity in Productive Landscapes Unit. Activa is a Laboratory that supports **entrepreneurship and innovation for rural development** and sustainable management of natural resources in Latin America and the Caribbean (LAC).

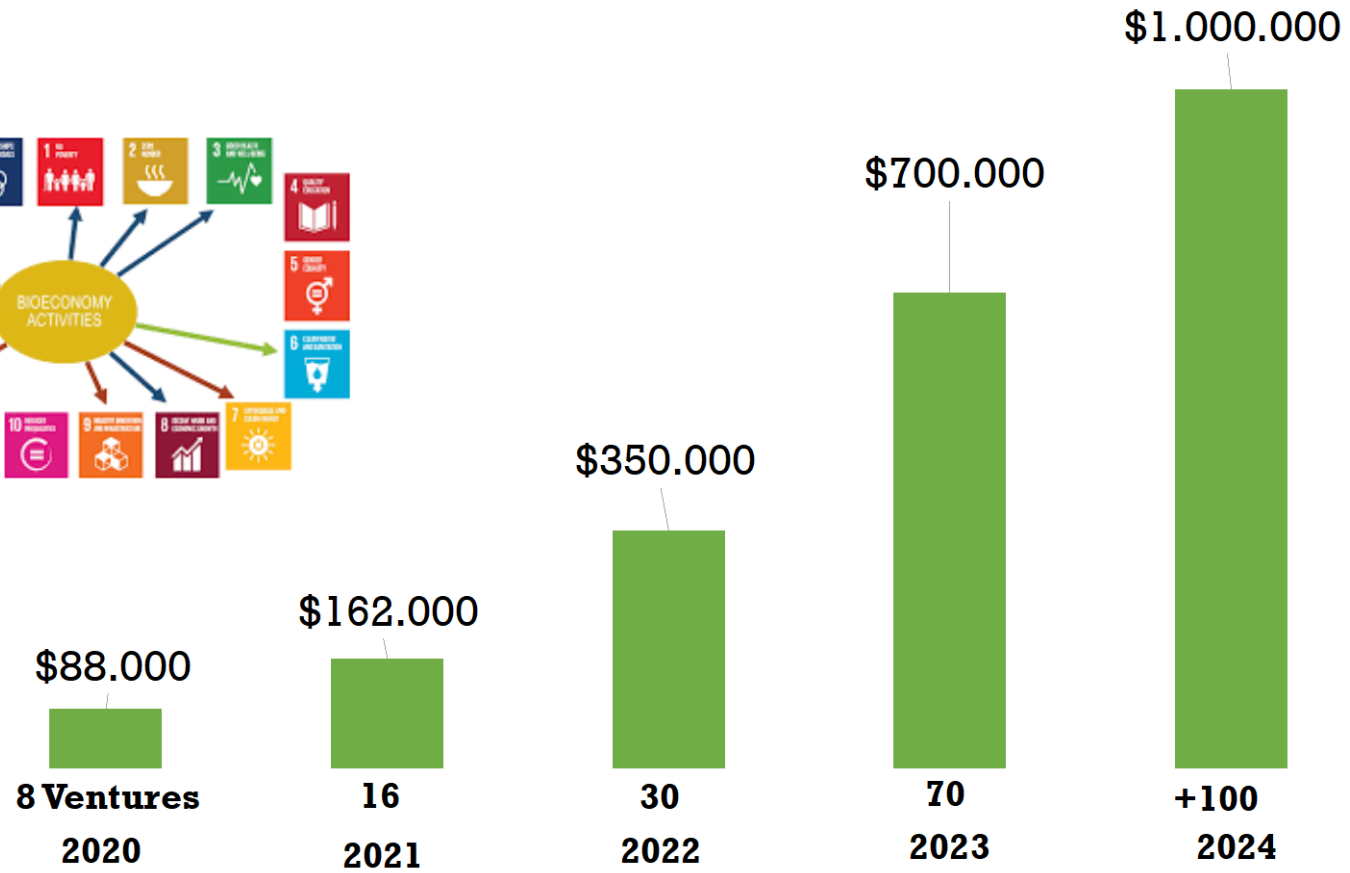
We integrate **advanced methodologies** for the development of innovations available to rural people.

We **facilitate networking** between actors interested in the rural sector, such as development banks, international cooperation, productive value chain actors, and investors, among others.

Partners:



Portfolio



Cooperation with Donors and the Private Sector





Solutions for Inclusive Green Development
Soluciones para el Desarrollo Verde Inclusivo



**We look forward to discussing
potential collaboration
Thanks!**