

COLLEGE OF ARCHITECTURE
TEXAS TECH UNIVERSITY

Architecture Research and Design Center (ARDC) Report

Sept 01 2014 to Dec 31, 2015



Accomplishments in
Scholarship, Creative Activities, and Research

Compiled by Clifton Ellis, PhD., Associate Dean for Research



Architecture Research and Design Center (ARDC) facilitates and coordinates research, scholarship and design activities within the College of Architecture (CoA). It assists faculty and students in their research/scholarship/creative endeavors, serves as a liaison to other research centers and institutes, and provides architectural/research services to the community.

The ARDC is headed by the Associate Dean for Research of CoA, and has one staff member. Physical resources include a fully equipped conference room and space for four research assistants. It also offers high definition laser scanning equipment, ground penetrating radar, and GPS survey instruments, among others. ARDC showcases faculty research, scholarship, and creative activities and houses a permanent exhibition of faculty productions. A list of faculty expertise is also available.

In the academic year 2013-2014 CoA faculty have written three book chapters and five full papers, lectured in 15 national and international venues, and displayed their creative work in 45 exhibitions. Additionally, they have organized conferences and workshops nationally, served as peer reviewers of journal articles and books, panelists, nominators, and editors. Full details of their research related activities are presented in the following pages.

Clifton Ellis, Ph.D., Professor
Associate Dean for Research
College of Architecture

PUBLICATIONS

Book Chapters

1. **Flueckiger, U.**, (2013) 'Sustainable Cabin', in Mulfinger, Dale (Eds.) *Back to the Cabin*, pg. 162-167, Taunton Press
2. **Raab, P.**, (2014), 'The Barn-An Adaptive Archetype' in *Discovering Architecture: Built Form as Cultural Reflection*, Frank Jacobus et al. (ed), pg. 91-111, Kendal-Hunt Publishers
3. **Taylor, C.** (2014) 'From Field to Frame: Exhibiting Land Art.' In *Challenging Conventions of Museum Display*. Jeremiah Gallay, Jane Lusaka, and Joelle Seligson, editors, American Association of Museums Press (submitted, in production)

Journal Articles

1. **Neiman, B.** (2014). Bebop Performances, Center (18) Music in Architecture-Architecture in Music, Michael Benedikt (ed.) pp. 228-235.
2. **Shacklette, B.**, (2014), Agents of Social Change: Influential Women Architects and Artists in New Mexico and the American Southwest, *Journal of Social Sciences Research (JSSR) 2014*, Volume 3, pp. 5-12, February 2014
3. **Shacklette, B.**, (2014), Learning from Experience. The Social Value of Contextually Situated Architecture, *The International Journal of Social, Political and Community Agendas in the Arts*, Volume 8, Issue 2, pp. 45-54, ISSN: 2326-9960 (print) 2327-2104 (online), August 2014
4. **Watkins, J.**, (2014), Reflection on Legacy, *Studio Potter Magazine*, Spring/Summer Issue, pp. 26-29, January 2014
5. **Watkins, J.**, (2013), Notes on Alternative Firing, (in Chinese, translated by Dr. Yang Luo), *Chinese Ceramic Artists*, pp. 70-75, Winter Issue, November 2013

Abstracts Published

1. **Ajlouni, R.**, (2014), *Fractals and Self-similarity in Ancient Islamic Architecture*, in the proceedings of *Nexus 2014: Relationships between Architecture and Mathematics*, Ankara, Turkey, June 9-12, 2014
2. **Ajlouni, R.**, (2013), *An Ancient Rule for Constructing Dodecagonal Quasi-Periodic Formations*, in the proceedings of *12th International Conference on Quasicrystals*, Krakow, Poland, September 2013
3. Ghamari, H., and **Haq, S.**, (2014), 'Artworks Landmarks Positioning as Route Selection Predictors', in the proceedings of *EDRA 45th Annual Conference, Building with Change*, Jeff Carney and K. Caerarnie ed., New Orleans, Louisiana
4. **Nesbit, Jeffrey S.** (2014), 'Urban Ontological Systems', in the proceedings of *Civilization at the Crossroads Response and Responsibility of the Systems Sciences*, Jennifer Wilby, Stefan Blachfellner, Wolfgang Hofkirchner (eds.), Bertalanffy Center for the Study of Systems Science: Vienna, (issn: 2227-7803) p. 280 – 285
5. **Shacklette, B.**, (2013) 'Redefining Studio Culture: Enhancing Student Learning by Integrating Service Learning with Graduate Architecture Design Studio Curriculum'. In *Proceedings of the Eighth*

International Conference on Interdisciplinary Social Sciences, July 30-August 1, 2013 Charles University, Prague, Czech Republic

6. **Shacklette, B.**, (2013) '*Memory, Cognition and Representational Structures in Contextually Situated Architecture*' in the proceedings of *8th International Conference on the Arts in Society* June 24-26, 2013, Eötvös Loránd University, Budapest, Hungary
7. **Shacklette, B.**, (2014), '*Destination Place Geographies: Considering Contextual Urban Aesthetics across Culture, Time and Space*', in the proceedings of the *International Organization of Social Sciences and Behavioral Research Spring Conference*, February 20-21, 2014, Biloxi, Mississippi, pg. 2
8. **Shacklette, B.**, (2014), '*Engagement Scholarship: Integrating Engagement Scholarship into the Advanced Architectural Design Studio*', in the proceedings of the *International Organization of Social Sciences and Behavioral Research Spring Conference*, February 20-21, 2014, Biloxi, Mississippi, 2014, pg. 4
9. **Shacklette, B.**, (2014), '*Habitus and the Game of Place: A Study on the Particularity of Plaza Life in the City Center of Seville, Spain*' in the proceedings of the *International Organization of Social Sciences and Behavioral Research Spring Conference*, February 20-21, 2014, Biloxi, Mississippi, pg. 3

Invited Publications

1. **Ellis, C.**, (2014), *Book Review*, Cary Carson and Carl R. Lounsbury (Ed) *The Chesapeake House: Architectural Investigation by Colonial Williamsburg*. in *The Journal of American History*, June 2014, Vol. 101 No. 1
2. **Watkins, J.**, (2013), '*James E. Watkins*', *New Ceramics, the European Ceramics Magazine*, Fall Issue, pp. 8-11, September 2013

PRESENTATIONS AND EXHIBITIONS

Conference/Symposia Presentations

1. **Driskill, D.**, (2014), '*High Cotton: A Community Well-Served by Reutilization of an Abandoned Industrial Site*', paper presentation at the *10th International Conference on Environmental, Cultural, Economic and Social Sustainability*, January 2014, University of Split, Croatia
2. **Driskill, D.**, (2013), '*Urban Tech as an Engagement Model*', *National Engagement Boundaries Conference*, Texas Tech University, September, 2013, Lubbock, Texas
3. **Driskill, D.**, (2013), '*Community Engagement*' presentation to the *AIA Dallas Leadership Academy*, November, 2013, Dallas, Texas
4. **Driskill, D.**, (2013), '*Avenue J: Lessons from the Past and from Nature to Heal Lubbock's Future*', at the *Climate Sciences Center Seminar Series*, Texas Tech University, November 5, 2013, Lubbock, Texas
5. **Glassell, M.**, (2014), '*Constructing the Construction Sequence: Reconceiving Technology for Architecture*', *2014 National Conference on the Beginning Design Student*, April 3-5, 2014, Chicago, Illinois

6. Ghamari, H., and **Haq, S.**, (2014), '*Artworks Landmarks Positioning as Route Selection Predictors*', in the proceedings of *EDRA 45th Annual Conference*, Building with Change, Jeff Carney and K. Caerarnie ed., New Orleans, Louisiana
7. **Nesbit, J.**, (2014), '*Urban Ontological Systems*,' Architectural Ecologies: Code, Culture, and Technology at the *Convergence Symposium, European Meetings on Cybernetics and Systems Theory*, April 23-24, 2014, University of Vienna, Vienna, Austria
8. **Nesbit, J.**, (2014), '*Stitch Morphologies: Shanghai*,' *ACSA/AIK 2014 International Conference: Open Cities Research and Design*. June 21-23, 2014, EWHA Women's University, Seoul, South Korea
9. **Raab, P.**, (2014), '*Speed Designing: Invigorative Design Strategies*,' *2014 National Conference on the Beginning Design Student*, April 3-5, 2014, Chicago, Illinois
10. **Raab, P.**, (2014), '*Constructing the Construction Sequence: Reconceiving Technology for Architecture*,' *2014 National Conference on the Beginning Design Student*, April 3-5, 2014, Chicago, Illinois
11. **Shacklette, B.**, (2014), '*Art, Architecture and the Preservation of Cultural Continuity*, *Ninth International Conference on the Arts in Society*, June 25-27, 2014, Sapienza University of Rome, Rome, Italy
12. **Shacklette, B.**, (2014), '*Destination Place Geographies: Considering Contextual Urban Aesthetics across Culture, Time and Space*,' the *International Organization of Social Sciences and Behavioral Research Spring Conference*, February 20-21, 2014, Biloxi, Mississippi
13. **Shacklette, B.**, (2014), '*Engagement Scholarship: Integrating Engagement Scholarship into the Advanced Architectural Design Studio*,' the *International Organization of Social Sciences and Behavioral Research Spring Conference*, February 20-21, 2014, Biloxi, Mississippi
14. **Shacklette, B.**, (2014), '*Habitus and the Game of Place: A Study on the Particularity of Plaza Life in the City Center of Seville, Spain*,' the *International Organization of Social Sciences and Behavioral Research Spring Conference*, February 20-21, 2014, Biloxi, Mississippi
15. **Shacklette, B.**, (2013), '*Integrating Engagement Scholarship into the Advanced Architectural Design Studio*,' *Boundary-Spanning: Engaged Scholarship across Disciplines, Communities & Geography*, *Engagement Scholarship Consortium*, Texas Tech University, October 8-9, 2013, Lubbock, Texas

Conference Proposals

1. **Shacklette, B.**, '*The Habitus of Place: A Study on the Particularity of Plaza Life in the City Center of Seville, Spain*,' ARCC/EAAE 2014 International Conference University of Hawaii, Manoa Honolulu, Hawaii
2. **Shacklette, B.**, '*Health, Wellness, and the Social Value of Beautiful Places*,' 12th Annual Hawaii International Conference on Arts and Humanities January 10-13, 2014, Honolulu, Hawaii.
3. **Shacklette, B.**, '*Considering Contextual Urban Geographies Across Culture, Time and Space*,' 12th Annual Hawaii International Conference on Arts and Humanities, January 10- 13, 2014, Honolulu, Hawaii.
4. **Shacklette, B.**, '*Trends and Traditions: Exploring the Relevance of Earth-based Construction Types across Socio-economic Extremes*,' The Fifth International Conference on the Constructed Environment, University of Pennsylvania in Philadelphia, USA from 16-17 October 2014. (January 29, 2014 accepted)
5. **Shacklette, B.**, '*The Scholarship of Engagement: How collaborations between architectural design studies and underserved communities, in a context of partnership and reciprocity, encourage the*

exchange of knowledge', Twelfth International Conference on New Directions in the Humanities 11-13 June 2014 Universidad CEU San Pablo Madrid, Spain, (March 20, 2014 rejected)

6. **Shacklette, B.**, *'Pedagogy for Change A Workshop on Integrating Engaged Learning with the Graduate Level Comprehensive Architecture Design Studio Course'*, The Engagement Scholarship Consortium Conference, Shaw Conference Centre, Edmonton. Alberta, Canada. Oct. 7 & 8, 2014 (accepted March 9, 2014)

Exhibitions

1. **Al Ajlouni, R.**, *'Quasi-crystal Patterns in Architecture'*, Verge Gallery, School of Architecture, the University of Sydney, June 2014, Sydney, Australia.
2. **Campbell, D.**, *'title of art'*, an exhibition of Texas Tech College of Architecture Art Faculty, Library, Texas Tech University, February 2014, Lubbock, Texas
3. **Campbell, D.**, *'title of art'*, Soul Collage Exhibit, Louise Hopkins Underwood Cultural Arts Center, February 2014, Lubbock, Texas
4. **Chinn, J.**, *'Three on the Beach'*, *'The Face'*, an exhibition of Texas Tech College of Architecture Art Faculty, Library, Texas Tech University, February 2014, Lubbock, Texas
5. **Davis, J.**, *'Raising Cain'* (won Third Place Award) and *'Road to Taos'* and *'High Road'*, West Texas Watercolor Society Spring Exhibition (regional juried show), Juror: Jerry Yarnell, Buddy Holly Center, Lubbock, TX. May 2014
6. **Davis, J.**, *'Wall Scape'*, The Pennsylvania Watercolor Society's Member's Online Exhibition (On line, juried, invitational open to members only, membership across USA), Juror: Glenn E. Blue, April 2014.
7. **Davis, J.**, *'Genesis'*, San Diego Watercolor Society 33rd Annual International Exhibition, San Diego Watercolor Society Gallery, (International Juried Show), juror: Jean Grastorf, AWS, NWS, TWSA, San Diego, California. September - October 2013
8. **Davis, J.**, *'Bonus Burgers Cacti, Bettye's Bricks'*, New Mexico Watercolor Society Fall "Open" Watercolor Exhibition 2013, (National Juried Show), juror: Ted Nuttall, Albuquerque, New Mexico, October 2013
9. **Davis, J.**, *'Portal'*, Mississippi Watercolor Society Grand National Exhibition, Mississippi Museum of Art, (National Juried Show), juror: Iain Stewart, accepted and exhibited, Jackson, Mississippi, October-December 2013
10. **Davis, J.**, *'Red Shirt White Hat' and 'Dignity'*, West Texas Watercolor Society Fall Exhibition, 5th & J Gallery, (Regional juried show), juror: Carolyn K. Walker, Lubbock, Texas. October 2013
11. **Driskill, D.**, *'High Cotton: Genesis'*, Design Team: Urbanist Design, Studio Outside, HiWorks, Urban Tech, Link Ministries, First Friday Art Trail, September 2014, Urban Tech Studio Gallery, Lubbock, Texas
12. **Driskill, D.**, *'High Cotton'*, Historic Resources Survey: Downtown Lubbock, First Friday Art Trail, Urban Tech Studio Gallery, Lubbock, Texas August 2014
13. **Driskill, D.**, *'High Cotton: A Community Well Served'*, Texas Design Schools Engagement Projects, Juror: Brent Brown, BC Workshop, Dallas, Texas. August-October 2013
14. **Gonzales, M.** *'Various Works'*, 16th Annual Contemporary Art International Exhibition, Upstream People Gallery, Omaha, Nebraska, June 2014

15. **Gonzales, M.**, *'Works'*, an exhibition of Texas Tech College of Architecture Art Faculty, Library, Texas Tech University, Lubbock, Texas March 201
16. **Gonzales, M.**, *'Printmaking'*, guest artist/lecturer in printmaking, Coastal Bend College, Beeville, Texas February 2014
17. **Jaddo, L.**, *'Off Center'*, group exhibition of faculty, College of Architecture Gallery, Texas Tech University, Lubbock, Texas, March 2-30, 2014
18. **Jaddo, L.**, *'Doll III'*, invitational community artists group exhibition, Tornado Gallery, Lubbock, Texas April 3, 2014
19. **Jaddo, L.**, *'Haley'*, mixed media art work, 27th Annual McNeese National Works on Paper Competition, McNeese State University, Department of Visual Arts, Shearman Fine Arts Center, Lake Charles, Louisiana April 3 – May 30, 2014
20. **Jaddo, L.**, *'Garden Goddess'*, hydro formed metal sculpture, Lubbock Art Festival Competition, Lubbock Civic Center, Lubbock, Texas April 11-13, 2014
21. **Jaddo, L.**, *'Jaddo Paintings'*, one person exhibition, International Cultural Center, Texas Tech University, Lubbock, Texas, April 22 – June 10, 2014
22. **Jaddo, L.**, *'The Exquisite Uterus: The Art of Resistance'*, Helen Klebsadel/University of Wisconsin, Union Art Gallery, University of Wisconsin, Activism in Art, Milwaukee, Wisconsin, September 20-October 20, 2014,
23. **Jaddo, L.**, *'Al-Mutanabbi Street Starts Here'*, Center for Book Arts, 28 West 27th street, 3rd floor, New York, New York, Travelling exhibition. July 10-September 21, 2014
24. **Louden, E.**, *'Migrant Worker Housing'*, Lubbock Garden and Arts Annual Photography Exhibition, non-juried, public art exhibition, 10 images exhibited, three sold, Lubbock Garden and Arts, Lubbock, Texas May-June 2014
25. **Louden, E.**, *'Cowhead Mesa Rock Art Archaeology Research Exhibition'*, Collaboration research with Dr. Stance Hurst, TTU Archaeology Department, Lubbock Lake Landmark Exhibition Hall, Lubbock, Texas January-May 2014
26. **Martin, M.**, *'Wooden Landscapes'*, group exhibition of faculty, College of Architecture Gallery, Texas Tech University, Lubbock, Texas March 2-30, 2014
27. **McReynolds, V.**, *'Wandering Above a Sea of Fog'*, Wunderlich Gallery, The University of Melbourne, Melbourne, Australia April 2014
28. **McReynolds, V.**, *'Doing It, and Doing It, and Doing It Well'* - Studio Couture, Detroit Design Festival, Detroit, Michigan September 21 - 29, 2013
29. **Nesbit, Jeffrey S.** *'Stitch Morphologies: Shanghai'*. 2014 ACSA/AIK International Conference: Open Cities Research and Design Project Exhibition, EWHA Women's University, Seoul, South Korea June 21 – 23, 2014
30. **Neiman, B.**, S. Armanovs, R. Burch, S. Daves, A. Laskie, J. Lesley, D. Mijic, C. Rodarte, B. Sablan, C. Shartle, A. Wharff, *'Poetics 13, Poetic Potential of Computers'*, College Of Architecture Library Gallery, Texas Tech University, Lubbock, Texas. November 20 - January 30, 2014
31. **Neiman, B.**, *'Bebop Performances'*, FACE Faculty Academic Contributions Exhibit, October 2, 2013.
32. **Park, K.**, *'OPEN2'*, the 2nd International Professor Workshop Exhibition, installation projects from the Interactive Graphics workshop the Media Museum, Communication University of China, Beijing, China, March 25-April 1, 2014
33. **Park, K.**, *'aMachine & DiMeND'*, the First Friday Art Trail, installation projects from the aMachine graduate studio and media installations from the Digital Media in Neoteric Dimension, CASP 5&J Gallery, Louise Hopkins Underwood Center for the Arts, Lubbock, Texas, May 2, 2014
34. **Perbellini, M., White D.**, *'Verona Lab'*, CoA Study Abroad Summer Studio 2013 at *Marmomacc Stone Academy*, 48th Marmomacc, Veronafiere, Verona, Italy, September 2013;
35. **Perbellini, M.**, *'2014 Student Biennial Exhibition'*, AIA Houston, Architecture Center, Traveling Exhibition with TSA

36. **Perbellini, M.**, *'Art + Architecture'*, Arts Festival, Interdisciplinary Exhibition of Smart Materials Research at the Lubbock Civic Center, Lubbock, TX, April 2014;
37. **Pongratz, C.**, and **Perbellini, M.**, *'Hyperwave Collection'*, Design by Pongratz Perbellini Architects, 48th Marmomacc, Verona, Italy September 2013.
38. **Raab, P.**, and **Glassell, M.**, *'Constructing the Construction Sequence'*, curated exhibition, College of Architecture, Lubbock, Texas October – November, 2013
39. **Taylor, C.**, *'2013 Texas Biennale'*, Field Reports from Land Arts of the American West, September 5 – November 9, 2013.
40. **Taylor, C.**, *'Land Arts 2013 Exhibition'*, Louise Hopkins Underwood Center for the Arts, Lubbock, Texas, April 4 – May 2, 2014
41. **Watkins, J.**, One Person Exhibition, 20 pieces, Texas A&M University-Commerce, Commerce, Texas April 2014
42. **Watkins, J.**, One Person Exhibition, 20 pieces, Tarrant County College, Hurst, Texas March 2014
43. **Watkins, J.**, Group exhibition, one piece, Tweed Museum, the University of Minnesota Duluth, in Duluth, Minnesota. August 1st 2014
44. **White, J.P.**, *'Chimneys'*, Photograph Exhibit, College of Architecture Library, Texas Tech University, Lubbock, Texas April 2014
45. **White, J.P.**, *'Historic American Buildings Survey Drawings and Photographs'*, College of Architecture Library, Texas Tech University, Lubbock, Texas May-August 2014

FUNDED RESEARCH

Ongoing Funded Research

1. **Al Ajlouni, R.** *'God is the Light of the Heavens and the Earth'*, The Hamad bin Khalifa Fellowship, the Fifth Biennial Hamad bin Khalifa Symposium on Islamic Art, November 9-11, 2013, Palermo, Sicily.
2. **Taylor, C.** *'Great Salt Lake Exploration Platform.'* Funded in part by the Graham Foundation for Advanced Studies in the Fine Arts. 2012-2015

Research Grants and Fellowship Proposals

1. **McReynolds, V.**, JAE Spring 2014. "Learning with Valparaíso: Gravitas of Survey and Design in a Vertical City"
2. **McReynolds, V.**, ACSA Spring 2014. "Studio Valparaíso: Celebrating Complexity Abroad in a Perpetually Similar World"

RELATED SERVICE

Editor / Peer Reviewer / Jury Member / Panelist / Curator / Correspondent etc.

1. **Al Ajlouni, R.** *Peer Reviewer*, Beyond Architecture, New Intersections and Connections, ARCC/EAAE 2014 International Conference, the Architectural Research Centers Consortium and the European Association for Architectural Education, February 12-15, 2014, Hawaii.
2. **Aranha, J.**, *Reviewer* 'Traditional Dwellings and Settlements Review (TDSR), Journal for the International Association for the Study of Traditional Environments', Center for Environmental Design, UC Berkeley, CA, summer/ fall 2013

3. **Aranha, J.**, *Reviewer*, Urban Development Category, Institute of International Education and the Global Innovation Initiative (GII) funded by the U.S. Department of State, the UK Department of Business, Innovation and Skills and the British Council. Fall 2013
4. **Buelinckx, H.**, *Panelist*, the Diagram, College of Architecture Dialogues, Texas Tech University, Lubbock, Texas, Spring 2014
5. **Ellis, C.**, *Paper Reviewer*, Journal of American History
6. **Ellis, C.**, *Paper Reviewer*, ARRIS, The Journal of the Southeast Society of Architectural Historians (SESAH)
7. **Gomez, J.**, *Panelist*, the Diagram, College of Architecture Dialogues, Texas Tech University, Lubbock, Texas, Spring 2014
8. **Haq, S.**, 1 book review, Routledge Publications
9. **Haq, S.**, 3 full papers in *Journal of Environmental Psychology*, Elsevier Publications
10. **Haq, S.**, 2 full papers, *Environment and Behavior*, Sage Publications
11. **Haq, S.**, 1 full paper, *Transportation Research Part A: Policy and Practice*, Elsevier Publications
12. **Haq, S.**, 20 abstracts, *Healthcare Design Conference (Research track)*, November 15-19, 2013, Orlando, Florida
13. **Haq, S.**, 4 abstracts EDRA 46, *Brain Storm: dynamic Intersections of Environment Behavior and Neuroscience*, Los Angeles, May 27-30, 2015
14. **Haq, S.**, 8 abstracts, 2 papers, ARCC-EAAE2014 International Conference *Beyond Architecture: New Intersections & Connections*, University of Hawai'i at Manoa Feb 12-15, 2014
15. **Haq, S.**, 5 research proposals, Center for Health Design's New Investigator Award
16. **Haq, S.**, 4 research proposals Center for Health design's New Investigator Award (second call)
17. **Haq, S.**, 14 projects in stage one and 5 projects in stage two, Center for Health Design Renovation/Remodel showcase competition
18. **Jaddo, L.**, *Panelist*, 30th Anniversary Conference on the Advancement of Women, 'Sacred Woman, Sacred Dance: Culturally Diverse Women Unraveling and Connecting Feminist Movements to the Manifold Embodiments of Indigenous Movements and Dances', Texas Tech University, April 17, 2014, Lubbock, Texas
19. **Nesbit, J.**, *Invited Studio Critic*, 'Air Studio'. Instructor Eric Reeder, June 19, 2014, Konkuk University, Seoul, South Korea.
20. **Nesbit, J.**, *Invited Studio Critic* 'Dongdaemun Project'. Instructor Daniel Oh, June 30, 2014, Korea University, Seoul, South Korea.
21. **Nesbit, J.**, *Moderator*, 'Architectural Ecologies: Code, Culture, and Technology' at the Convergence Symposium, European Meetings on Cybernetics and Systems Research, University of Vienna, April 23, 2014, Vienna, Austria
22. **Nesbit, J.**, and Joshua Nason. *Session chairs*, 'Chasing the City', 102nd ACSA, *Globalizing Architecture: Flow and Disruptions*. April 12 – 13, 2014, Miami, FL.
23. **Neiman, B.**, *Panelist*, CoA Dialogues, Genesis of Form, College of Architecture, Texas Tech University, October 11, 2013, Lubbock, Texas
24. **Park, K.**, *Paper Reviewer*, Annual University of Southern California BIM Symposium: BIM GAP, August 22, 2014
25. **Shacklette, B.**, *Associate Editor*, The International Journal of Social, Political and Community Agendas in the Arts Volume 8, Issue 2 2014
26. **Shacklette, B.**, *Associate Editor*, The International Journal of Interdisciplinary Studies in Communication Volume 7 2014
27. **Taylor, C.** *Curator*, *Land Arts 2013 Exhibition*, Louise Hopkins Underwood Center for the Arts, LHUCA Warehouses on Mac Davis Lane, Lubbock, Texas, 4 April – 2 May 2014

Invited Lectures

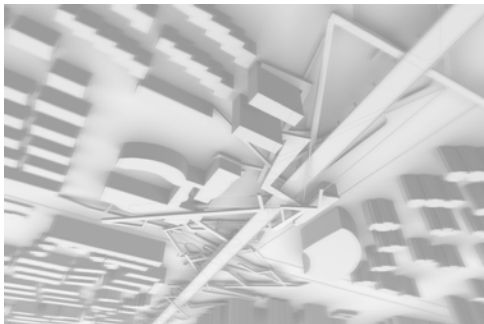
1. **Al Ajlouni, R.**, '*Quasi-Crystalline Geometry*', the Islamic Geometric Patterns Workshop, Istanbul Design Center, 23-29 Sept. 2013, Istanbul, Turkey.
2. **Flueckiger, U.**, '*28 Dollars and 12 ½ Cents a Design Build Project*', 29th Faculty Academic Contribution Exhibition, Crosslyn Room, Texas Tech University Library, October 2, 2013, Lubbock, Texas.
3. **Nesbit, J. S.** '*Designing the Unpredictable*'. Future Cities Lab 2014 Lecture Series. July 17 2014, FCL-ETH Centre, Singapore.
4. **Louden, E.**, '*Dickey House Restoration and Rehabilitation*', Invited speaker by the Blackshear Group, kickoff fund raising even, Dickey House, April 2014, Lubbock, Texas
5. **Louden, E.**, 2013 Samuel Benton Cantey, III Lecture. Historic Fort Worth Inc. Invited Public Lecture in conjunction with Preservation Awards for Fort Worth Historic Preservation projects, Main gallery, Fort Worth Art Center, September 26, 2013, Fort Worth, Texas.
6. **Park, K.**, '*Contemporary Interactive Design in North America*', Communication University of China, March 19, 2014, Beijing, China
7. **Park, K.**, '*Village*', Young Architects Forum, Zagamachi Gallery, May 27, 2014, Seoul, Korea
8. **Pentecost, R.**, '*Establishing a Research Agenda*', World Congress on Design and Health, International Academy for Design and Health, July 12, 2014, Toronto, Canada
9. **Pentecost, R.**, '*How 10 Forces are Continuing to Change Healthcare Design*', New Prescription for Transforming Healthcare, IFMA Health Care Institute and the Corporate Reality, Design and Management Institute, June 12, 2014, Washington, D.C.
10. **Pentecost, R.**, '*How 10 Forces are Continuing to Change Healthcare Design*', New Prescription for Transforming Healthcare, IFMA Health Care Institute and the Corporate Reality, Design and Management Institute, June 13, 2014, Raleigh, North Carolina
11. **Pentecost, R.**, '*Virtual Patient Experiences: The Dominant Opportunity in a Transforming Market*', Cleveland Clinic Patient Experience Summit, May 20, 2014, Cleveland, Ohio
12. **Raab, P.**, '*Haptic Strategies: Current Work and Teaching Methodologies*', presentation at South Dakota State University, Department of Architecture, May 9, 2014, Brookings, South Dakota
13. **Raab, P.**, '*Haptic Strategies: Current Work and Teaching Methodologies*', presentation at Dalhousie University, College of Architecture, May 28, 2014, Halifax, Nova Scotia
14. **Shacklette, B.**, '*A Service Learning Presentation: Successful Service-Learning Outcomes and a View of Factors and Methods that Provide Results*', presentation at TLPDC TTU Service Learning Advisory Council, January 13, 2014, Texas Tech University, Lubbock, Texas
15. **Watkins, J.**, '*Reflections*', Lecture and Workshop, Melchisin International Summer School for the Arts, July 2014, Victoria British Columbia, Canada
16. **Watkins, J.**, '*Reflections*', Lecture and Workshop, Texas A&M University-Commerce, April 2014, Commerce, Texas
17. **Watkins, J.**, '*Reflections*', Lecture and Workshop, Tarrant County College, March 2014, Hurst, Texas
18. **Watkins, J.**, '*Reflections*', Lecture and Workshop, Clay Studio, Louise Hopkins Underwood Center for the Arts, May 2014, Lubbock, Texas

PROFESSIONAL / DESIGN / GRAPHIC / PRODUCTION WORK

1. **Gomez, J.**, *4000 sf. residence in Bosque Real, Mexico City*, SD, DD, CD. Full Design and drawings. In City review process for permits, to begin construction as soon as permits are released. February-December 2013.
2. **Pongratz, C., Perbellini, M.**, *Pearl Residence*, 8-apartments complex, residential, new construction, on 12,000 sq.ft. lot area, Lubbock, TX, 2014, construction in progress
3. **Perbellini, M., Pongratz, C.**, *Neumann Residence*, Project for 3200 sq.ft. Residential renovation, design proposal 2013, Lubbock
4. **Raab, P.**, *Bar/Restaurant Redesign*, Hyatt Riverwalk [project budget: \$100,000] - construction finishing Jan 2014
5. **Raab, P.**, (in Collaboration with Studio 512), *Whimsy guest house*, Austin, Texas [project budget: \$150,000], 2012-2014
6. **Raab, P.**, Lead Architect, *restaurant renovation*, Tacoland, San Antonio, Texas [project budget: \$75,000], 2014
7. **Raab, P.**, Lead Architect, *exterior bar*, Worm, San Antonio Riverwalk, San Antonio, Texas [project budget: \$150,000], 2012-2014
8. **Raab, P.**, *Bar/Restaurant Redesign*, Pearl Brewery, San Antonio [project budget: \$80,000] - construction started Sep 2013
9. **Smith, G.**, *Cover Design*, Brett Houk ed. *The 2013 Season of the Chan Chich Archaeological Project*, Papers of the Chan Chich Archaeological Project, # 7. Department of Sociology, Anthropology, and Social Work, Texas Tech University, Lubbock
10. **White, J.P.**, 2014 – Ongoing – Huckabee House, Lubbock, Texas, consulting and contract documents, renovation and additions

HONORS / AWARDS

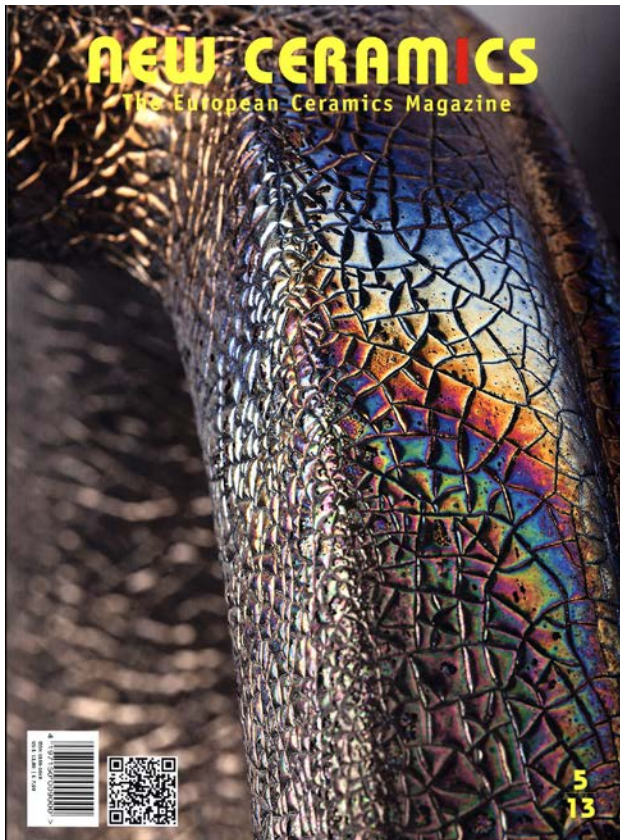
1. **Gonzalez, R.**, *Texas Tech University Hemphill Wells New Professor Excellence in Teaching Award*, 2014
2. **Louden, E.**, *Preservation Achievement Award by Historic Fort Worth, Inc.* for recognition of outstanding service and preservation activism in the city of Fort Worth. 2010-2013. September 26, 2013.



3. **Nesbit, Jeffrey S.** *First Place Merit Award*, *Stitch Morphologies: Shanghai*. 2014 ACSA/AIK International Conference: Open Cities Research and Design Project Competition, June 21, 2014. EWHA Women's University, Seoul, South Korea.

RECOGNITIONS/PUBLICITY

1. **Aranha, J.**, 'On the Road to Building Better Architects' in *Texas Tech University Discoveries*. <http://www.depts.ttu.edu/vpr/discoveries/spring-2014/aranha/aranha-story.php>, Spring 2014
2. **Driskill, D.**, 'Urban Stage' images on the front page of the *Lubbock Avalanche Journal and Go Magazine* following the Urban Stage Design Charrette in Oct. 2013.
3. **Jaddo, L.**, 'Deer', in DiSilvestro, Rozanne (eds.) *Stories We Tell*, pg. 120, Instant Publishers, 2013
4. **Jaddo, L.**, 'Diaspora' published in catalogue of New Century Gallery, organized by Women's Caucus for the Arts. Chelsea, NY, 2013
5. **Perbellini, M.**, featured in Renzo Gastaldo, *L'Architetto che tiene cattedra in Texas*, in *L'Arena*, Main Regional Newspaper, Verona, Italy, April 08, 2014
6. **Taylor, C.**, 'Moving Mountains: Land Arts of the American West', Director Sam Wainwright Douglas, *Documentary in progress on Land Arts*. <http://www.austinfilm.org/page.aspx?pid=1414>, January 18, 2014
5. **Taylor, C.**, Photographs 'Double Negative', 2010 and 'Jackpile Mine', 2011 published in *Undermining: a wild ride through land use, politics, and art in the changing west*. Lucy Lippard. (New York & London: New Press, 2014) pp. 84 and 111
6. **Watkins, J.** Ceramic work featured as Cover Image, "*Studio Potter Magazine*" January 1st 2014



7. **Watkins, J.** Ceramic work featured as Cover Image, "*New Ceramics, The European Ceramics Magazine*", September, 1st 2013

EQUIPMENT AVAILABLE IN THE ARDC

3D Laser Scanner(s)



Leica HDS 3000 is a high definition laser scanner for the documentation of communities, historical architecture and archaeology. Uses include the collection of 3D point cloud data for historical structures documentation such as the Statue of Liberty and high definition documentation of archaeological sites such as Mesa Verde National Park.

Leica Scan Station C10 is an upgrade to the HDS 3000. This equipment includes the functionality of an optical total station which allows users to traverse, resection or use scan targets for maximum flexibility in dealing with site logistics. It also conducts general 360° and focused areas scans faster, can be setup & moved faster, lets users locate targets, register & geo-reference faster, and lets users check scan results faster.

<http://today.ttu.edu/2012/11/school-of-architecture-acquires-state-of-the-art-equipment/>

Global Positioning System (GPS) Survey Equipment

Trimble survey grade GPS is for site and structure documentation. Uses include positioning data set for inclusion into Geographical Information Systems (GIS) and surveying of architectural and archaeological sites. This is usually used in conjunction with the 3D laser scanner (Leica HDS 3000) on documentation projects to give survey co-ordinates to the point cloud data gathered by the scanner.

Optical Total Station (Survey Equipment)

This **Leica survey instrument** is for the documentation of architecture and communities. Uses include establishing control grids for the documentation of architecture, communities and archaeology. This is typically used in conjunction with the GPS survey equipment in our historical documentation projects.

Creaform Handheld 3D Scanner

The Creaform handheld 3D Scanner is a portable, high resolution (sub-millimeter) scanner. Uses include 3D scanning of existing objects, 3D archiving, complex shape acquisition, measurements archiving, digital models and mock-ups and rapid prototyping.

FLIR Infrared Camera

The FLIR Infrared Camera captures images in the infrared spectrum allowing the user to detect the difference in temperature between an area and its surroundings. The FLIR infrared camera is an excellent, non-contact, tool for Building Diagnostics, Energy Audits, Moisture Detection, and Restoration & Remediation.

Ground Penetrating Radar

The ground penetrating radar system uses radar pulses to image the subsurface. GPR can be used in a variety of media, including rock, soil, ice, fresh water, pavements and structures. It can detect objects, changes in material, and voids and cracks. Applications include nondestructive testing (NDT) of structures and pavements, locating buried structures and utility lines, and studying soils and

bedrock. In environmental remediation, GPR is used to define landfills, contaminant plumes, and other remediation sites.

FACULTY EXPERTISE

College of Architecture, Texas Tech University

Ajlouni, Rima	Historic Preservation	Photogrammetry	Digital methods and Computation	Islamic Art and Architecture	Patterns and geometry
Aranha, Joseph	Vernacular architecture	Non-Western Architecture	Climate responsive architecture	Meaning and symbolism in architecture	
Buelinckx, Hendrika	Formal design theory and methods	Visual spatial literacy	Shape algebra's and grammars	Women in architecture	Architectural theory
Davis, Jimmy	Architectural Rendering/delineation/illustration	Watercolor	Art	Exhibition	Photography
Driskill, David	Urban Design	Sustainability	Programming	Architecture for High School Students	Community Design
Ellis, Clifton	Cultural Landscapes	Antebellum South	Slavery	Domesticity	Renaissance & Enlightenment
Fairbetter, La Gina	Creative Process	Mural Painting	Design Communication	Design Communication	Freehand Drawing
Flueckiger, Urs Peter	Architectural Design	Sustainable Design	Design Build	Architectural Drawing	
Glassell, Mari Michael	Urban Theory and Design	Urban Diagnostics	Multi-Family Housing / Density	Adaptive Re-Use	Foundation Design Studio
Gomez, Javier	Architectural Design	New Architecture in Historical Buildings or Sites	XVI-XVIII Spanish Colonial Architecture		
Gonzales, Manuel	Drawing/Painting	Digital Media	Mixed Media	Alternative Print Making	Photo Process
Gonzales, Robert	American History	Latin American Architecture	Border Architecture	Design	American Studies
Haq, Saif	Spatial Cognition	Space Syntax	Architecture and Urban Theory	Non Western Architecture	Health Care Facilities Design
Hill, Glenn	Energy + Design	Visualization	General Systems Theory	Computer Simulation of Buildings	Integrated Architecture
Jaddo, Lahib	Art and Architecture	Beginning Design			
Louden, Elizabeth	Historic Preservation	Architectural Documentation, Large Format	3-D Laser Scanning	Historic Building Materials	Cultural Sites and Building Assessment
Martin, Michael	Furniture	Sustainability	Affordable Housing		
McReynolds, Victoria	Installations	Terrain vague	Memory space	Design pedagogy	Steps and stairs
Neiman, Bennett	Design	Process	Improvisation	Imagination	Creativity
Nesbit, Jeff	Design	Fields	Urbanism	Decay	Theory
Park, Kuhn	Computational Design	Building Information Modeling	Information Envisioning	Digital Media Arts	Physical Computing
Perbellini, Maria	Design process	Design strategies	Parametric surface	Digital craft and	Material systems

		for digital constructs	structures	fabrication	innovation
Perl, Robert	Architecture	Design Methods	Sustainability	Design Thinking	Visualization
Pongratz, Christian	Architecture & Design	Urban Ecology & Vision	Design Theory & Strategies	Computation & Media	Manufacturing & Innovation
Raab, Peter	Architectural Design + Fabrication	Construction	Structural Analysis	Design-Build	Sustainability
Shacklette, Ben	Architectural design	Participatory processes in community design	Vernacular Architecture of the American Southwest	Service learning and Community Engagement	Architectural Drawing and Freehand Sketching
Smith, Gary	Historic Preservation	Historic Structures Reports	Documentation	Adaptive Use	Ethics
Taylor, Chris	Embodied fieldwork	Land art / earthworks	Interdisciplinary practice	Design-build	Design pedagogy
Torres, MaryAlice-	Community Design	Urban Design	Downtown Revitalization	Historic Preservation	Architecture
Vernooy, Andrew	Urban design	Construction Technology	Design theory	Late 20th cent Arch	Adv Struct Systems
Wade, Derrick	Sensory design	Local government	Client relationships	Residential design and construction	Cold climate sustainable design
Watkins, James	Free Hand Drawing	Water Color	Architectural Ceramics	Ceramic Art	
White, Dustin	Digital Fabrications	Mass Customization	Digital Processes and Computation	Design	
White, Jim	Housing	Accessibility	Site design	Materials and methods	
White, John	Historic Preservation	Architecture	Adaptive Use		
Zugay, Brian	Churches	Religious Architecture	American Architecture		