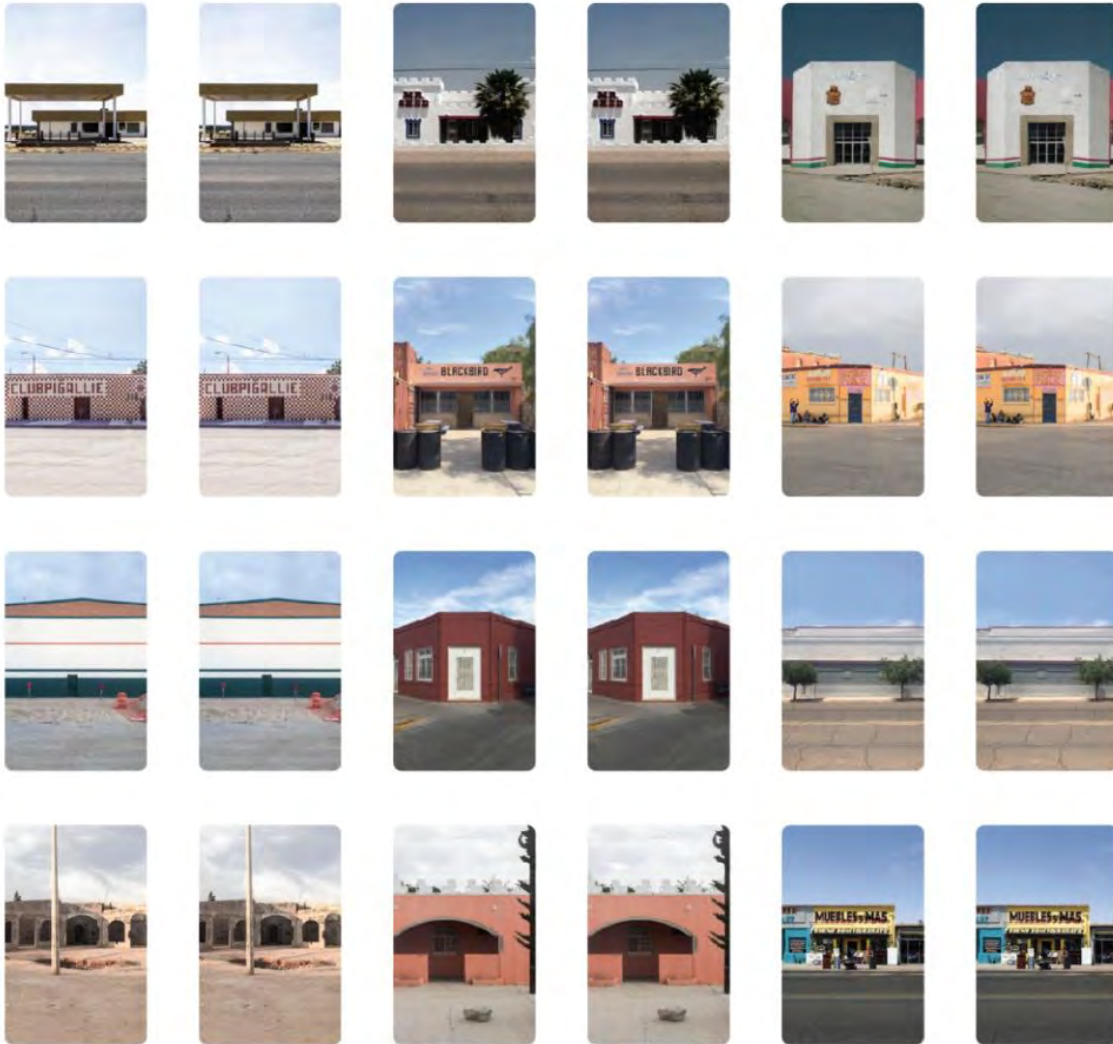


**ARCH 3314 Contemporary Issues In Architecture**  
College of Architecture, Texas Tech University  
Spring 2021

Noémie Despland-Lichtert- *She/Her*  
[noemie.despland-lichtert@ttu.edu](mailto:noemie.despland-lichtert@ttu.edu)



**A Playful Approach to Reading and Writing for Architects**

## Catalog Description

Contemporary issues in architectural theory and history utilizing precedents from the early 20th century to the present. Writing Intensive.

## Course Description

Through weekly workshops, reading, and discussion, this undergraduate seminar will introduce students to a diversity of types of writing in Architecture from news coverage to scholarly articles, but also manifestos, pitches, and fiction. Students can expect to gain significant skills in reading comprehension and writing skills for a diversity of audiences and purposes.

## Student Learning Objectives

- Strengthen reading comprehension, including analyzing the context of production of a text.
- Strengthen Research skills, including understanding the difference between various types of sources and how to use them.
- Strengthen writing skills in a variety of styles, including narrative, analytical, epistolary, digital, and factual.

## Student Performance Objectives (S.P.C. A.1)

Professional Communication Skills: Ability to write and speak effectively and use representational media appropriate for the profession and with the general public.

## Means of Evaluation

The evaluation of performance in the course is based primarily on participation, concept, and execution.

## Teaching Methods

This seminar will promote peer to peer learning and teaching. Students will be asked to research and present various topics throughout the semester.

## Grading Breakdown & Weights

Participation		25%
Writing assignment 1	(Design journal)	15%
Writing assignment 2	(History paper)	15%
Writing assignment 3	(Project statement or online presence)	15%
Writing assignment 4	(Creative Writing)	15%
Final		15%

## Means of Preparation & Participation Evaluation

The criteria for assessing the preparation and participation credit are as follows:

- Attendance
- Completion of deliverables in a timely manner
- Capacity to integrate and respond to instructor's feedback
- Demonstration of understanding key concepts of the class

## Notes on Attendance & Grading

Attending classes is a basic responsibility of every TTU student who is enrolled in courses at the College of Architecture. In seminar courses, the central learning experience is through direct contact between the student, their peers, and the faculty which advances a student's understanding through shared exploration. Regular and punctual class attendance is considered an essential part of satisfying both the NAAB requirements.

If illness or personal life events are preventing you from attending the class please reach out to the instructor before class. No medical notes will be required (with the exception of extended absences). This class is based on trust.

**Tentative Course Schedule** - *These dates are subject to change at the discretion of the instructor and/or the CoA.*

### Week 1

01/21 - Class introduction and student forms

### Week 2

01/26 - Syllabus description

- + Show how to access our textbook
- + Get a sketchbook

01/28 - Reading Description

- + Read "How and why Architects Write" and "Design Journals" from (*How Architects Write* 2017)
- + In class choose a building to research and document in your "Design Journal"

### Week 3

02/02 - Sketchbook pinup and workshop

- + Breakout room exchanges
- + Design prompt for each other

02/04 - **Cross Seminar Social**

- + *Due Writing assignment 1 (On Miro)*

### Week 4

02/09 - Research

- + Read "History Term Paper" from (*How Architects Write* 2017)
- + Reading Discussion in class

02/11 - Library Workshop

### Week 5

02/16 - **Game Day Workshop (mix and match)**

02/18 - Plagiarism

- + Plagiarism Quiz
- + History Term Paper workshop and questions

### **Week 6**

02/23 - [Game Day \(mix and match\)](#)

- + *Due Writing assignment 2 (Via Email before class)*

02/25 - [Game Day Workshop \(Taboo\)](#)

### **Week 7**

03/02 - [Game Day \(Taboo\)](#)

03/04 - [Cross Seminar Social \(present Taboo and mix and match\)](#)

### **Week 8**

03/09 - Project Description

- + Read "Project Description" from *(How Architects Write 2017)*

03/11 - Online Presence

- + Read "Writing for your Online Presence" from *(How Architects Write 2017)*

### **Week 9**

03/16 - Writing Assignment Peer Review Workshop

03/18 - [Game Day - Processing Lecture](#)

- + *Due Writing assignment 3 Project Description or Online Presence ( Via Email Before Class)*

### **Week 10**

03/23 - No Class; Wellness Day

03/25 - Creative Writing in Architecture

- + Reading discussion

### **Week 11**

03/30 - Creative Writing in Architecture (continues)

- + Reading discussion

04/01 - [Cross Seminar Social \(show Taboo and Processing\)](#)

### **Week 12**

04/06 - [Game Day Workshop](#)

04/08 - [Game Day](#)

### **Week 13**

04/13 - Creative Writing in Architecture (continues)

+ Reading discussion

04/15 - Creative Writing in Architecture (continues)

+ reading discussion

### **Week 14**

04/20 - Peer Reviews

04/22 - *Due Writing assignment 4 (creative writing)*

### **Week 15**

04/27 - Final prep

04/29 - **Final**

#### **ADA Statement**

Any student who, because of a disability, may require special arrangements in order to meet the course requirements should contact the instructor as soon as possible to make any necessary arrangements. Students should present appropriate verification from Student Disability Services during the instructor's office hours. Please note: instructors are not allowed to provide classroom accommodations to a student until appropriate verification from Student Disability Services has been provided. For additional information, please contact Student Disability Services in West Hall or call 806-742-2405.

#### **Academic Integrity Statement**

Academic integrity is taking responsibility for one's own class and/or course work, being individually accountable, and demonstrating intellectual honesty and ethical behavior. Academic integrity is a personal choice to abide by the standards of intellectual honesty and responsibility. Because education is a shared effort to achieve learning through the exchange of ideas, students, faculty, and staff have the collective responsibility to build mutual trust and respect. Ethical behavior and independent thought are essential for the highest level of academic achievement, which then must be measured. Academic achievement includes scholarship, teaching, and learning, all of which are shared endeavors. Grades are a device used to quantify the successful accumulation of knowledge through learning. Adhering to the standards of academic integrity ensures grades are earned honestly. Academic integrity is the foundation upon which students, faculty, and staff build their educational and professional careers. [Texas Tech University ("University") Quality Enhancement Plan, Academic Integrity Task Force, 2010]

(806)-742-SAFE (7233) or file a report online at [titleix.ttu.edu/students](http://titleix.ttu.edu/students). Faculty and staff members at TTU are committed to connecting you to resources on campus. Some of these available resources are: TTU Student Counseling Center, 806-742-3674, [depts.ttu.edu/scc/](http://depts.ttu.edu/scc/) (Provides confidential support on campus.) TTU 24-hour Crisis Helpline, 806-742-5555, (Assists students who are experiencing a mental health or interpersonal violence crisis. If you call the helpline, you will speak with a mental health counselor.) Voice of Hope Lubbock Rape Crisis Center, 806-763-7273, [voiceofhopelubbock.org](http://voiceofhopelubbock.org) (24-hour hotline that provides support for survivors of sexual violence.) The Risk, Intervention, Safety, and Education (RISE) Office, 806-742-2110, [depts.ttu.edu/rise/](http://depts.ttu.edu/rise/) (Provides a range of resources and support options focused on prevention education and student wellness.) Texas Tech Police Department, 806-742-3931, [depts.ttu.edu/ttpd/](http://depts.ttu.edu/ttpd/) (To report criminal activity that occurs on or near Texas Tech campus.)

#### **Civility In The Classroom Statement**

Texas Tech University is a community of faculty, students, and staff that enjoys an expectation of cooperation, professionalism, and civility during the conduct of all forms of university business, including the conduct of student-student and student-faculty interactions in and out of the classroom. Further, the classroom is a setting in which an exchange of ideas and creative thinking should be encouraged and where intellectual growth and development are fostered. Students who disrupt this classroom mission by rude, sarcastic, threatening, abusive, or obscene language and/or behavior will be subject to appropriate sanctions according to university policy. Likewise, faculty members are expected to maintain the highest standards of professionalism in all

### Religious Holy Day Statement

"Religious holy day" means a holy day observed by a religion whose places of worship are exempt from property taxation under Texas Tax Code §11.20. A student who intends to observe a religious holy day should make that intention known in writing to the instructor prior to the absence. A student who is absent from classes for the observance of a religious holy day shall be allowed to take an examination or complete an assignment scheduled for that day within a reasonable time after the absence. A student who is excused under section 2 may not be penalized for the absence; however, the instructor may respond appropriately if the student fails to complete the assignment satisfactorily.

### Discrimination, Harassment, And Sexual Violence Statement

Texas Tech University is committed to providing and strengthening an educational, working, and living environment where students, faculty, staff, and visitors are free from gender and/or sex discrimination of any kind. Sexual assault, discrimination, harassment, and other Title IX violations are not tolerated by the University. Report any incidents to the Office for Student Rights & Resolution,

### COVID-19 Information

Face coverings are required. Texas Tech University requires that students wear face coverings while in classes, while otherwise in campus buildings, and when social distancing cannot be maintained outdoors on campus.

Signage. Be attentive to signage posted at external and some classroom doorways that indicates entry and exit ways, gathering and queuing spaces, and availability of masks and hand sanitizer.

Seating assignments. The purpose of assigned seating is to assist in contact tracing, if necessary, and to augment social distancing. Students are expected to sit at a minimum of six feet apart. [State whether seats in your classroom will be marked as available and unavailable.] A required seating chart will be created once everyone is positioned with appropriate social distancing. There will also be an orderly procedure, designed to ensure social distancing, for exiting the classroom. [You may want to refer them to the Guidebook distributed at the All School Meeting.]

### Illness-Based Absence Policy

If at any time during this semester you feel ill, in the interest of your own health and safety as well as the health and safety of your instructors and classmates, you are encouraged not to attend face-to-face class meetings or events. Please review the steps outlined below that you should follow to ensure your absence for illness will be excused. These steps also apply to not participating in synchronous online class meetings if you feel too ill to do so and missing specified assignment due dates in asynchronous online classes because of illness.

1. If you are ill and think the symptoms might be COVID-19-related:

interactions with all constituents of the university ([www.depts.ttu.edu/ethics/matadorchallenge/ethicalprinciples.php](http://www.depts.ttu.edu/ethics/matadorchallenge/ethicalprinciples.php)).

### LGBTQIA Support Statement

I identify as an ally to the lesbian, gay, bisexual, transgender, queer, intersex, and asexual (LGBTQIA) community and I am available to listen and support you in an affirming manner. I can assist in connecting you with resources on campus to address problems you may face pertaining to sexual orientation and/or gender identity that could interfere with your success at Texas Tech. Please note that additional resources are available through the Office of LGBTQIA within the Center for Campus Life, Student Union Building Room 201, [www.lgbtqia.ttu.edu](http://www.lgbtqia.ttu.edu), 806.742.5433." Office of LGBTQIA, Student Union Building Room 201, [www.lgbtqia.ttu.edu](http://www.lgbtqia.ttu.edu), 806.742.5433 Within the Center for Campus Life, the Office serves the Texas Tech community through facilitation and leadership of programming and advocacy efforts. This work is aimed at strengthening the lesbian, gay, bisexual, transgender, queer, intersex, and asexual (LGBTQIA) community and sustaining an inclusive campus that welcomes people of all sexual orientations, gender identities, and gender expressions

- b. During the health provider visit, request a "return to school" note;
- c. E-mail the instructor a picture of that note;
- d. Return to class by the next class period after the date indicated on your note.

Following the steps outlined above helps to keep your instructors informed about your absences and ensures your absence or missing an assignment due date because of illness will be marked excused. You will still be responsible to complete within a week of returning to class any assignments, quizzes, or exams you miss because of illness.

If you have interacted with the individual(s) who have tested positive for COVID-19:

Maintain a list of those persons and consult Student Health Services at 806-743-2911 or your primary care provider on the next steps.

Do not return to class until you are medically cleared by your Health Care Provider.

### Attendance Policy

The seminar meets every Tuesday and Thursday online. Students are required to attend and participate in each class period. It is crucial that students remain engaged throughout each class period. The College of Architecture's attendance policy is the following: Students are allowed to miss the equivalent of one week of class (two classes if the course meets two times/week, etc) without directly affecting the student's grade and ability to complete the course. If additional absences are required for a personal illness/family emergency, pre-approved academic reason/religious observance, the situation should be discussed and evaluated with the faculty member and appropriate Chair on a case-by-case basis. For each absence over that

- a. Call Student Health Services at 806.743.2848 or your health care provider. After hours and on weekends contact TTU COVID-19 Helpline at 806.743.2911.
  - b. Self-report as soon as possible using the Dean of Students COVID-19 webpage. This website has specific directions about how to upload documentation from a medical provider and what will happen if your illness renders you unable to participate in classes for more than one week.
  - c. If your illness is determined to be COVID-19-related, all remaining documentation and communication will be handled through the Office of the Dean of Students, including notification of your instructors of the period of time you may be absent from and may return to classes.
  - d. If your illness is determined not to be COVID-19-related, please follow steps 2.a-d below.
2. If you are ill and can attribute your symptoms to something other than COVID-19:
- a. If your illness renders you unable to attend face-to-face classes, participate in synchronous online classes, or miss specified assignment due dates in asynchronous online classes, you are encouraged to visit with either Student Health Services at 806.743.2848 or your health care provider. Note that Student Health Services and your own and other health care providers may arrange virtual visits.

allowed number, the student's evaluation can be lowered up to one full letter grade, though the greater than four absences are grounds for failure at the discretion of the program.

Any student not in class within the first 10 minutes will be considered tardy, and any student absent (in any form including sleep, technological distraction, or leaving mid-class for a long break) for more than 1/3 of the class time can be considered fully absent. If arriving late, a student must be respectful of a class in session and do everything possible to minimize disruption caused by a late arrival. It is always the student's responsibility to seek means (if possible) to make up work missed due to absences, not the instructor's, although such recourse is not always an option due to the nature of the material covered.

A mid-term or final review is to be treated the same as a final exam as outlined and expected by the University. Students must understand that the days allocated for their seminar final in the syllabus are considered an examination period. If they are absent or tardy on any review day and miss their opportunity to present, this is considered equal to missing a final exam.

### **Best Practices**

Since the class will meet on Zoom, please follow this protocol to maximize your ability to concentrate and participate with minimal distractions:

- Participate in class with web camera on, if possible
- Keep microphone on mute unless speaking
- • Follow established class norms for contributing to class discussion (e.g., raising hand; using chat; unmuting / muting when called upon; collaborating with small groups; presenting original work)
- Keep a notebook for this class and take daily notes