



Mein Haus: A Workforce Housing Initiative for Fredericksburg, Texas

Arch 5501,5502, 5503 Architectural Design Studio Fall 2021 (old degree plan)

Arch 5501,5502, 5503 Architectural Design Studio & Arch 7000 Fall 2021 (new degree plan)

Texas Tech University 2021-2022 Undergraduate and Graduate Catalog Course Descriptions

Arch 5501-5503 Topical studio that explores design, theoretical and/or technological issues that affect current architectural thought and practice.

Arch 7000 – 1 Semester Credit Hours Research course in which students will learn and demonstrate the core skills necessary to draft a thesis or generate an alternative research project.

Ben K. Shacklette, Registered Texas Architect & Associate Professor

Ben.Shacklette@ttu.edu

806-392-6558



A Workforce Housing Initiative for Fredericksburg, Texas addresses the urgent need for affordable middle-income housing, which is a national concern. Students in this studio will work with representatives of the community of Fredericksburg to execute projects which explore land use density models, mixed use development, efficient housing design, multiple occupancy, self-build, and non-traditional yet innovative approaches aimed at producing high quality affordable living opportunities which respond to local culture, climate, and constructability.



Sunday House on San Antonio Street

Fredericksburg Herb Farm is a modern planned development inspired by the historic Sunday Houses.

Rheingold Country School Pavilion and Schoolhouse

Situated in the heart of the German Texas Hill Country, Fredericksburg was settled in 1846 by 120 German immigrants amidst hostile Commanche lands where they remained an isolated community for many years developing the distinct speech, local customs and traditions, and the iconic architecture which is idiosyncratic of the region and special to Texas. The proposed Workforce Housing can be informed by the particular use of limestone, the log cabin, wood framing, and German Fachwerk construction found in Fredericksburg. Students will visit and learn from the rural country schoolhouses and ranching communities, town settlement history, and the Sunday Houses which are only found in Fredericksburg, and they will engage the local community through participatory design strategies.



According to the **Urban Land Institute** (ULI), Workforce Housing is defined as “Housing affordable to households earning between 60 and 120 percent of area median income (AMI). Workforce housing targets middle-income workers which includes professions such as police officers, firefighters, teachers, health care workers, retail clerks, and technicians. Households who need workforce housing are the middle class who may not always qualify for subsidized housing designed to serve low income households.”

The United States Department of **Housing and Urban Development** (HUD) uses the metric that housing should cost no more than 30% of pre-tax household income to be affordable.



Workforce Housing Goals & Aspirations:

- Compact and efficient (reduce sprawl), low-cost but not low-quality dwelling units.
- Market appeal embracing modern trends and incorporating sensitivity to history and context.
- Close to workplace locations-walkable distances. Reduce traffic and parking needs.
- Can also be in the county with workforce shuttle to downtown.
- Compact land use development patterns. Master planned communities-dense neighborhood.
- Sustainable-renewable design: Solar shading, rainwater harvesting, local materials, compact design. To reduce consumption.



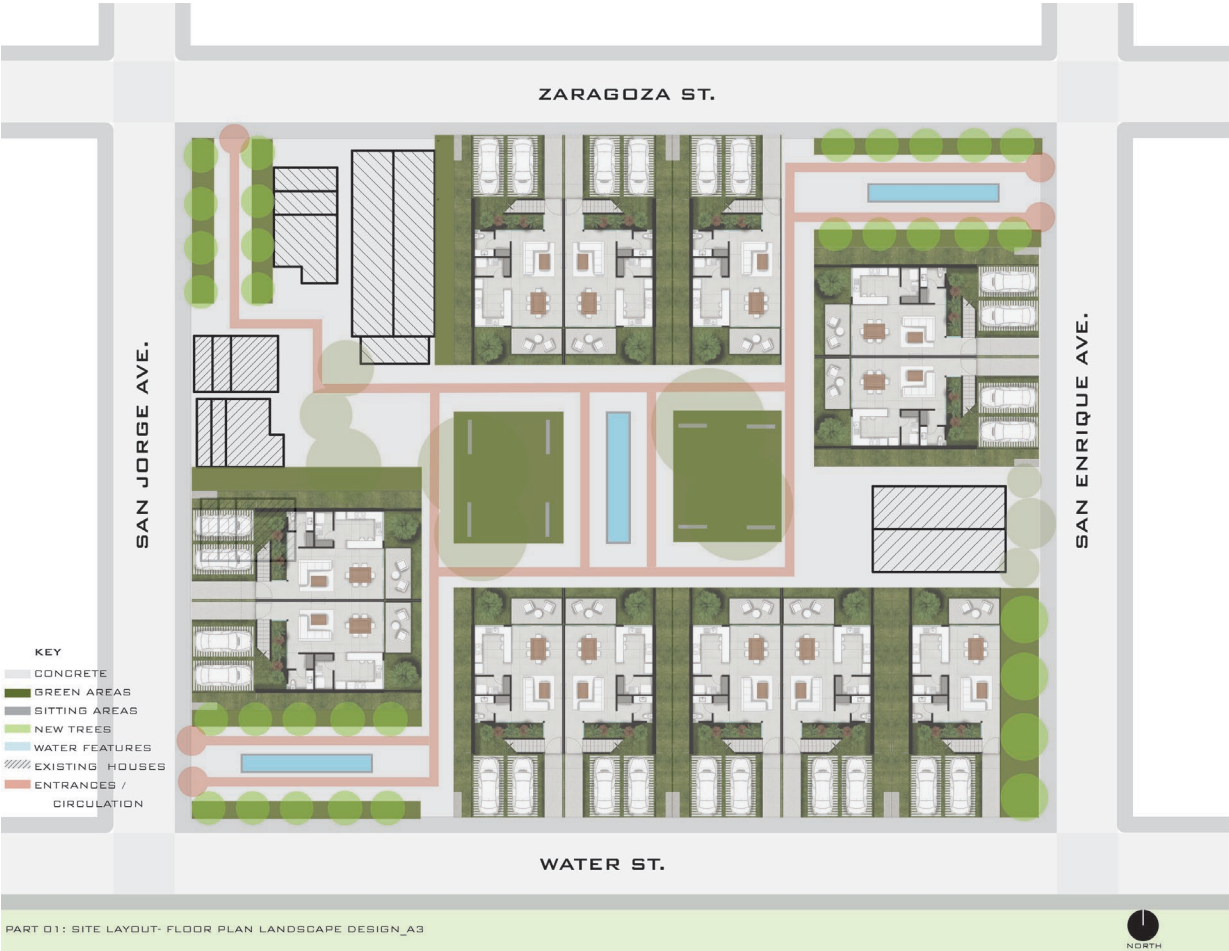
ARCH 5501-5003 Graduate Architectural Design Studio Outreach and Engagement Project:

Ben K. Shacklette, Registered Texas Architect & Associate Professor

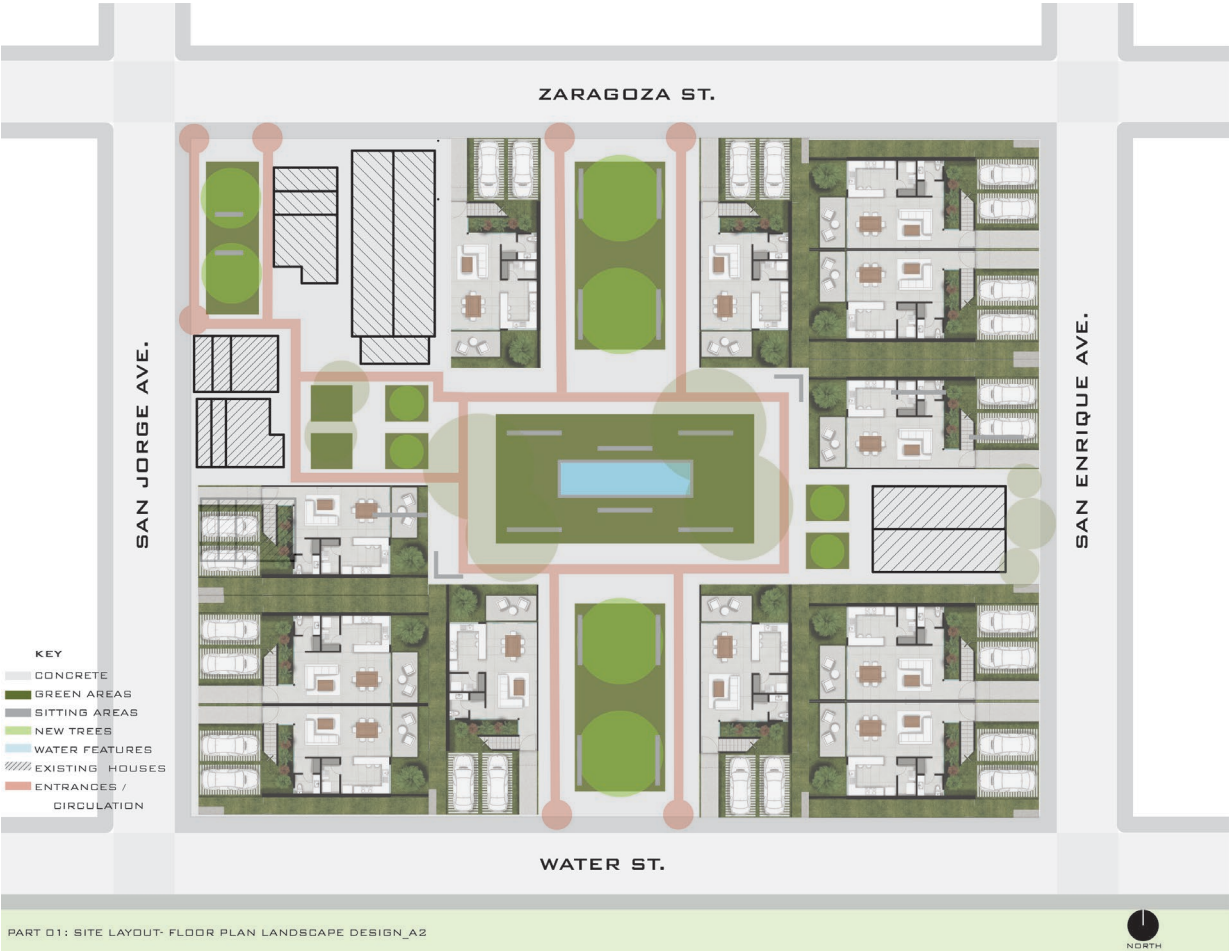
Fredericksburg is one of the premier destinations in Texas. This studio will make on-site visits to Fredericksburg and Gillespie County to learn firsthand about the unique history of its people, and its distinctive architecture. Lodging on these field trips will be provided to students by local citizens at no cost.

Mein Haus is German for My House, and this project addresses the urgent need to find ways to make the American Dream of home ownership a continuing reality for an increasingly economically stressed and displaced middle class. Students will execute projects which explore land use density methods, mixed use development, efficient housing design, multiple occupancy, self-build, and non-traditional yet innovative approaches aimed at producing market rate affordable living opportunities which respond to local culture, climate, and constructability. Student projects will entail field research, pre-design research and writing, photography and sketching, digital design, and model making. This is an outreach and engagement project where students will work directly with community stakeholders under the direction of the instructor, and activities will include zoom meetings, on-site research and design charrettes, and presentations to the public for the course final.

DESIGN: PRELIMINARY SCHEMES



FLOOR PLAN A1



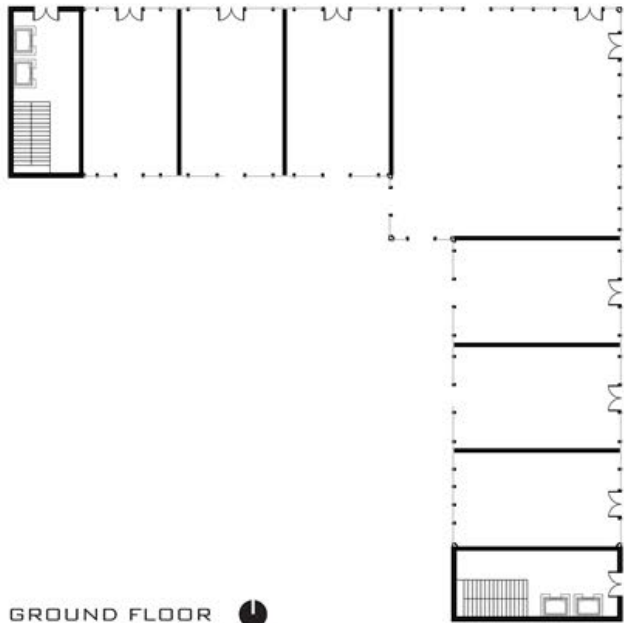
FLOOR PLAN A2

Example of Anticipated Student Design Outcomes Jacqueline Reyes Arch 3602 Design VI Spring 2021

DESIGN: MIDTERM PROPOSAL



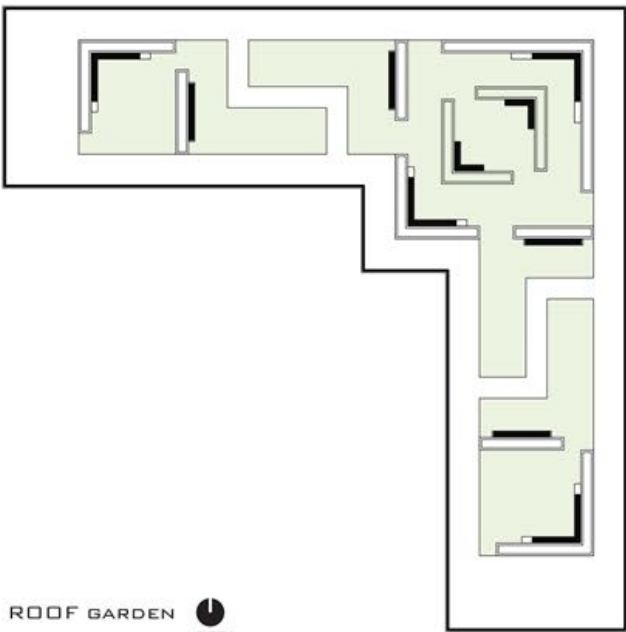
FLOOR PLANS
1 & 2-BEDROOM APARTMENTS



GROUND FLOOR 
NORTH

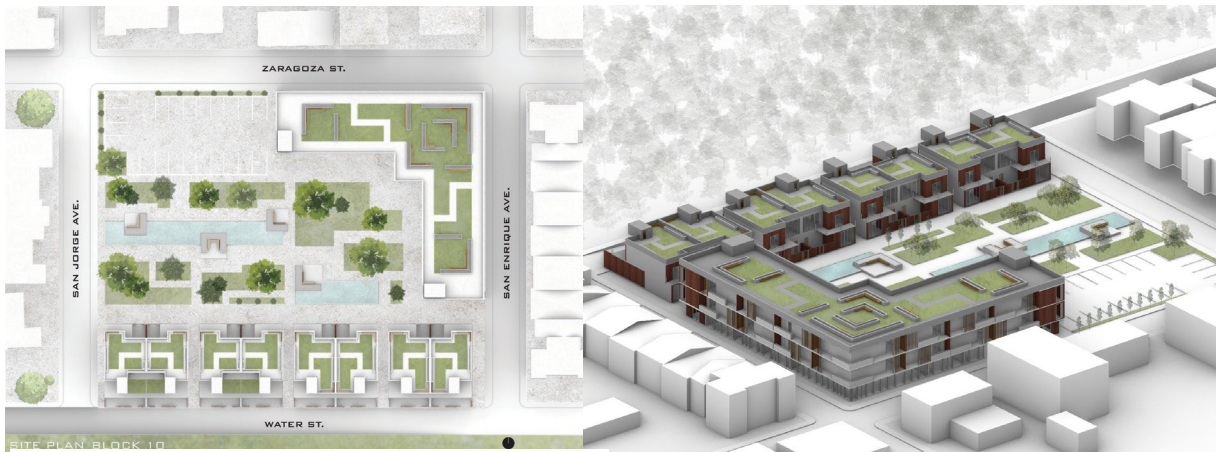


2ND, 3RD FLOOR 
NORTH



ROOF GARDEN 
NORTH

BARRIO AZTECA BLOCK 10 FINAL DESIGN PROPOSAL



ARCH 5501 -5503 Advanced Architectural Design

Ben K. Shacklette, Architect & Associate Professor

Ben.Shacklette@ttu.edu 806-392-6558

A Topical Community Engagement Studio Tentative Schedule

Mein Haus: A Workforce Housing Initiative For Fredericksburg, Texas

Week 1 Pre-Design

Monday	August 23	First day of classes-All School Meeting and Lottery
Wednesday	August 25	Project Introduction
Friday	August 27	Lecture: A brief History of Fredericksburg

Week 2 Schematic Design

Monday	August 30	Workforce Housing Research
Wednesday	September 1	Workforce Housing Research
Friday	September 3	Workforce Housing Research

Week 3

Monday	September 6	Labor Day Holiday no class
Wednesday	September 8	Workforce Housing Research Presentations
Friday	September 10	Arrive- Fredericksburg Site Visit No. 1 Field Research

Week 4

Monday	September 13	Return-Lubbock
Wednesday	September 15	Workforce Housing Preliminary Design
Friday	September 17	Workforce Housing Preliminary Design

Week 5

Monday	September 20	Workforce Housing Preliminary Design
Wednesday	September 22	Workforce Housing Preliminary Design
Friday	September 24	Arrive- Fredericksburg Site Visit No. 2 Charrettes

Week 6 Design Development

Monday	September 27	Return-Lubbock
Wednesday	September 29	Workforce Housing Design Development
Friday	October 1	Workforce Housing Design Development

Week 7

Monday	October 4	Workforce Housing Design Development
Wednesday	October 6	Workforce Housing Design Development
Friday	October 8	Workforce Housing Design Development

Week 8

Monday	October 11	Midterm Group Reviews TBA
Wednesday	October 13	Midterm Group Reviews TBA
Friday	October 15	Midterm Group Reviews TBA

Week 9 Final Design Resolution

Monday	October 18	Workforce Housing Design Resolution
Wednesday	October 20	Workforce Housing Design Resolution
Friday	October 22	Workforce Housing Design Resolution

Week 10

Monday	October 25	Workforce Housing Design Resolution
Wednesday	October 27	Workforce Housing Design Resolution
Friday	October 29	Workforce Housing Design Resolution

Week 11

Monday	November 1	Workforce Housing Design Resolution
Wednesday	November 3	Workforce Housing Design Resolution
Friday	November 5	Workforce Housing Design Resolution

Week 10 Final Design Representation: Oral Presentations, Drawings & Models

Monday	November 8	Workforce Housing Final Design Representation
Wednesday	November 10	Workforce Housing Final Design Representation
Friday	November 12	Workforce Housing Final Design Representation

Week 11

Monday	November 15	Workforce Housing Final Design Representation
Wednesday	November 17	Workforce Housing Final Design Representation
Friday	November 19	Arrive- Fredericksburg Site Visit No. 3 Final Presentations

Week 12

Monday	November 22	Return-Lubbock
Wednesday	November 24	Thanksgiving Vacation
Friday	November 26	Thanksgiving Vacation

Week 13

Monday	November 29	Documentation and Studio clean-up
Wednesday	December 1	Last Day of Classes