



EMERGENCY ACTION PLAN

2024

CHEMISTRY (0005)

1204 BOSTON AVE



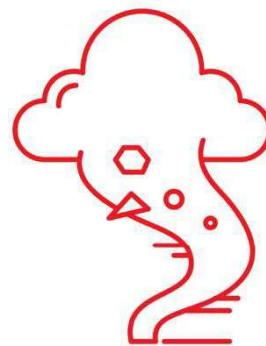
TEXAS TECH UNIVERSITY
Division of Safety & Security

Emergency Management™

BEM: Building Emergency Manager
EAC: Emergency Action Coordinator

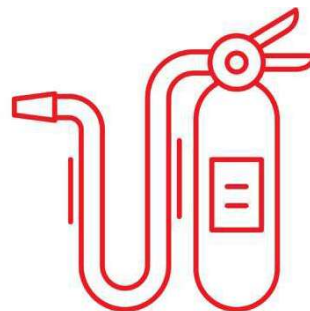
WEATHER

- Severe weather watches and warnings will be issued by the National Weather Service.
- TTU Tornado Sirens will be sounded during a Tornado Warning.
- Warnings will also be delivered on enabled mobile devices from the National Weather Service and TechAlert!
- Seek shelter in the Emergency Sheltering Area. Close all doors behind you. Stay away from doors, windows, and outside walls. Follow your EAC's or BEM's instructions. Wait for the "All Clear".



FIRE

- If you see smoke or fire, pull the fire alarm and dial 9-1-1.
- When horns and strobes are sounded, all occupants must evacuate, **EACH AND EVERY TIME**.
- Leave the Building using exits or stairs. **DO NOT USE THE ELEVATORS.**
- Evacuate to the Northeast or West lot area and report to your BEM or EAC.
- Use a fire extinguisher if you can safely and are familiar with the operation.
- Assist others. Those who cannot use the stairs will wait on Fire-Protected Stairs. Then, notify your EAC or BEM and First Responders to your location.
- **“Wait for the All Clear”** before returning to the building.



MEDICAL

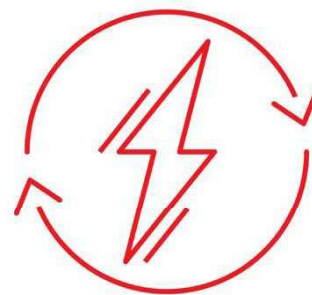
- Dial 9-1-1 for any medical emergency. Provide Building Name, Address, Room Number, and Call Back number. Follow Dispatchers Instructions.
- If someone suddenly falls to the ground, is unresponsive, and not breathing, perform Hands-Only-CPR. Instruct someone to dial 9-1-1 and to grab the nearest AED.
- Continue CPR and/or AED until paramedics arrive.



Step 1	Step 2		Step 3	Step 4
 <p>Phone 9-1-1 and get an AED.</p>	 <p>Cover your own mouth and nose with a face mask or cloth.</p>	 <p>Cover the person's mouth and nose with a face mask or cloth.</p>	 <p>Perform Hands-Only CPR. Push hard and fast on the center of the chest at a rate of 100 to 120 compressions per minute.</p>	 <p>Use an AED as soon as it is available.</p>

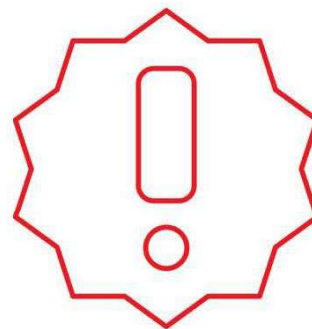
POWER

- A power outage may occur due to mechanical malfunction or severe weather.
- Emergency lighting may be available.
- Utilize flashlights and follow instructions.
- There may be a need to evacuate and close the building. Temporary relocation may apply, follow supervisor instruction.



VIOLENCE

- When a violent event occurs, but is not directed at you, do not interfere and immediately dial 9-1-1.
- If directed at you, move away from the threat if possible. Defend yourself by any means possible. **AVOID-DENY-DEFEND.** When safe, dial 9-1-1. Follow instructions from first responders.



SHOOTER

- If you suspect an active shooter, immediately dial 9-1-1.
- If under attack, follow Active Shooter Protocol **AVOID-DENY-DEFEND.** https://www.depts.ttu.edu/ttpe/active_shooter.php
- Follow police orders & TechAlerts!



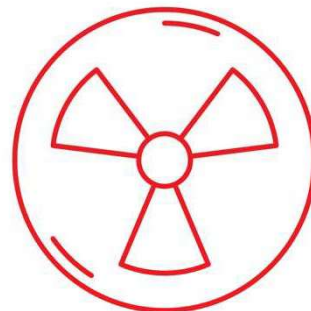
SUSPICIOUS MAIL

- If you see or receive a suspicious package, leave it where found and dial 9-1-1. Do not disturb or try to conduct any cleanup. Keep the immediate area clear of others.
- Instruct people who have touched the package to wash their hands with soap and water.
- Follow first responder's instructions.



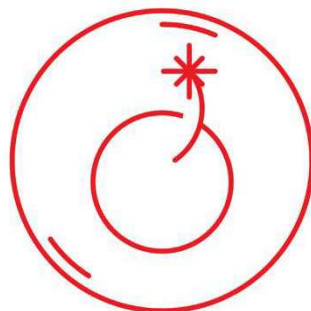
HAZARDOUS MATERIALS

- When a hazardous materials spill occurs or is suspected, avoid any contact with the substance and avoid breathing in vapors.
- Dial 9-1-1. Alert people in the area to evacuate to a safe area.
- Turn off ignition sources if you can safely do so.
- Follow directions from first responders and alerts from TechAlert!



BOMB THREAT

- If you receive a bomb threat, immediately have someone dial 9-1-1 and notify your supervisor. Keep the caller on the line as long as possible. **DO NOT HANG UP.**
- Write down or record as much information as possible.
- Follow police directions and notifications issued by TechAlert! View the **Bomb Threat Checklist** at:
<https://www.cisa.gov/sites/default/files/2024-04/Bomb%20Threat%20Checklist%20v3.0.pdf>



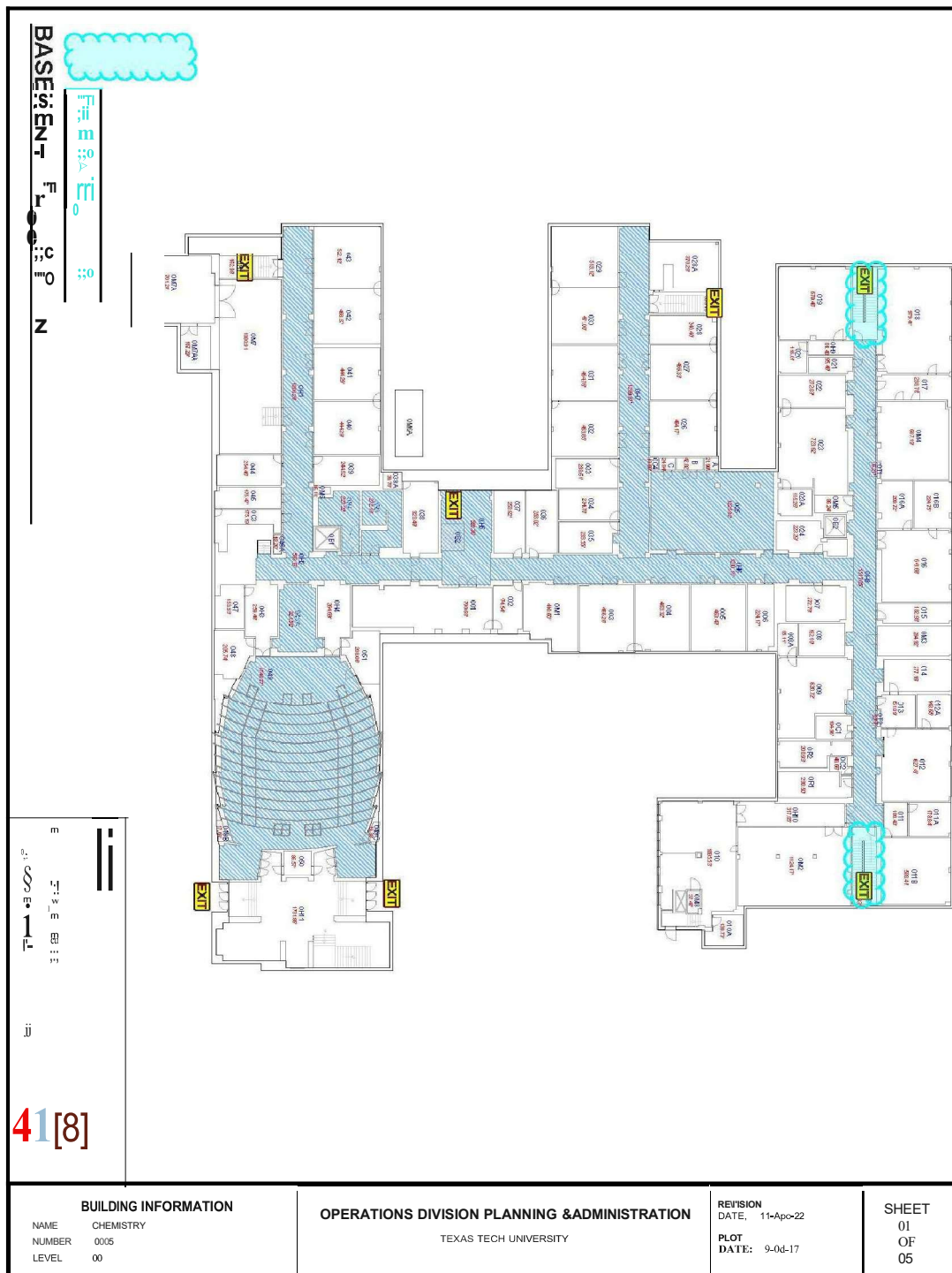
INFORMATION FOR PEOPLE WITH DISABILITIES

- If you cannot evacuate the building, go to the nearest Fire Rated Stairwell (see maps). Emergency responders will evacuate you from these areas (see maps).
- Make sure you know where the building's Fire Rated Stairwells are located and how to get to them. Make sure you tell first responders or your EAC what stairwell you are in.
- Ask others to help you evacuate if needed.
- Connect with your EAC and make sure they are aware of your evacuation needs.

OTHER IMPORTANT INFORMATION**AED Location**

Texas Tech University
STOP 2006 | Lubbock, Texas 79409
T 806.742.3940

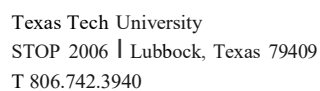
Evacuation

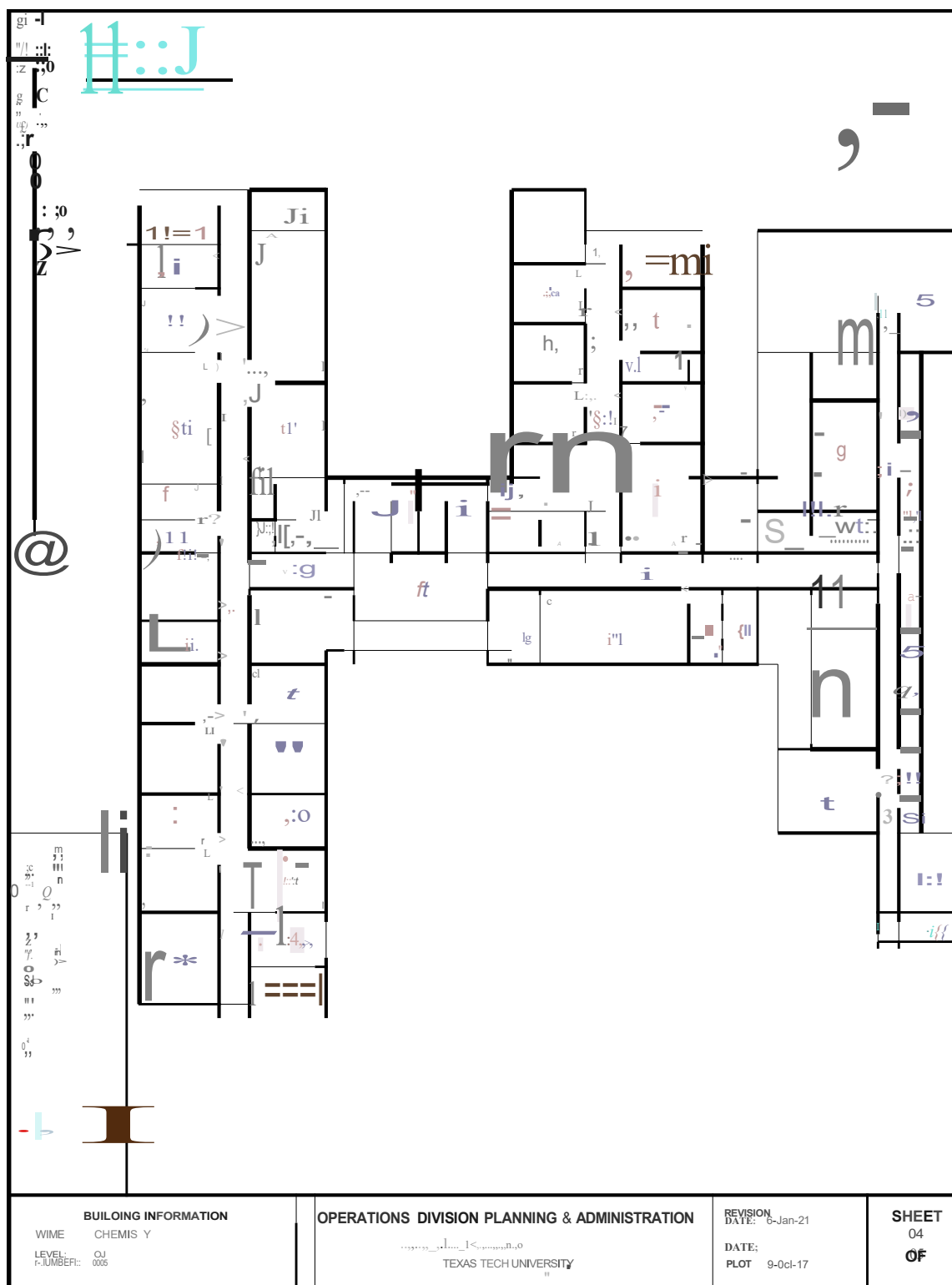
[EXIT]

Texas Tech University
 STOP 2006 | Lubbock, Texas 79409
 T 806.742.3940

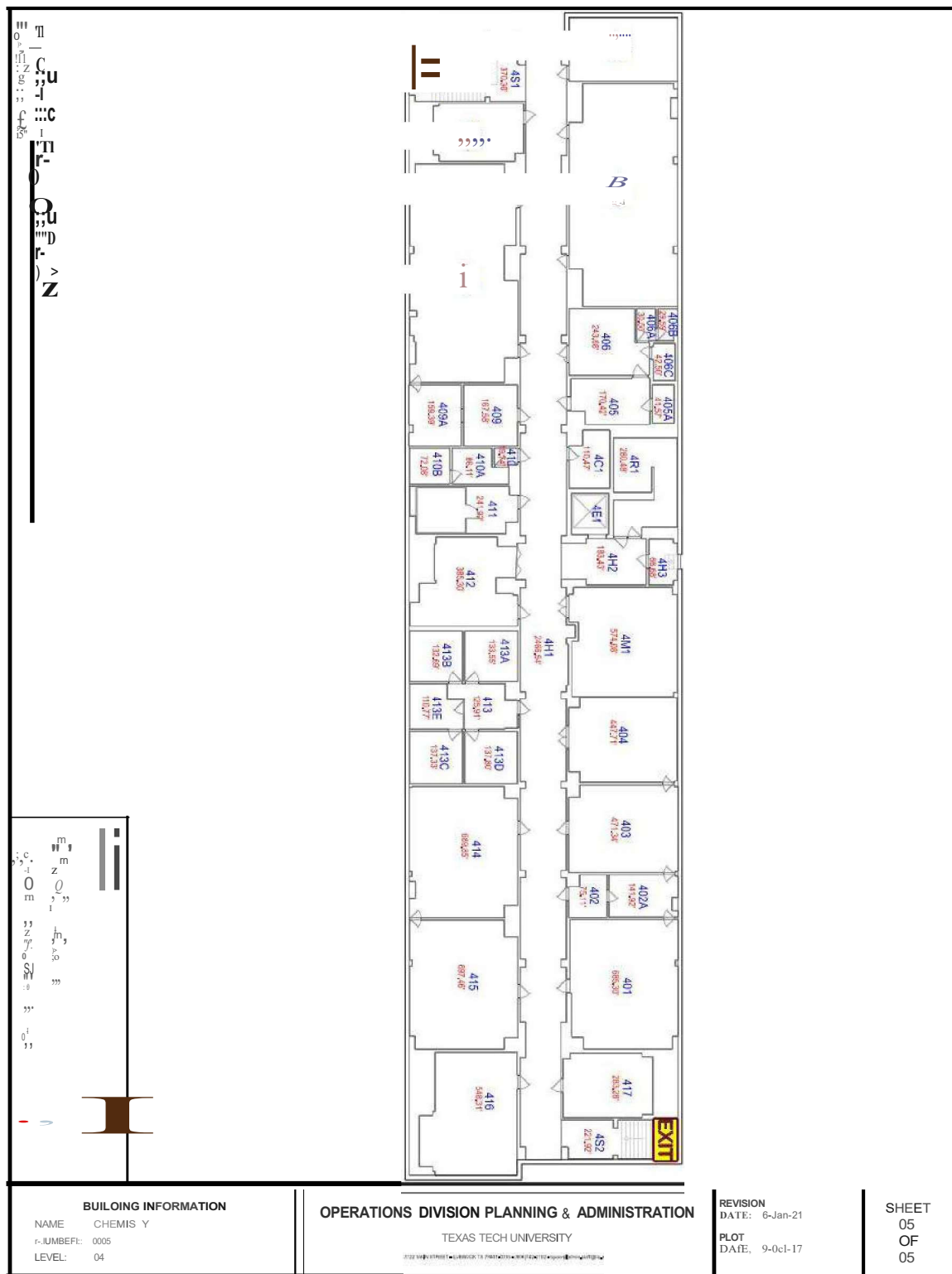


Texas Tech University
 STOP 2006 | Lubbock, Texas 79409
 T 806.742.3940

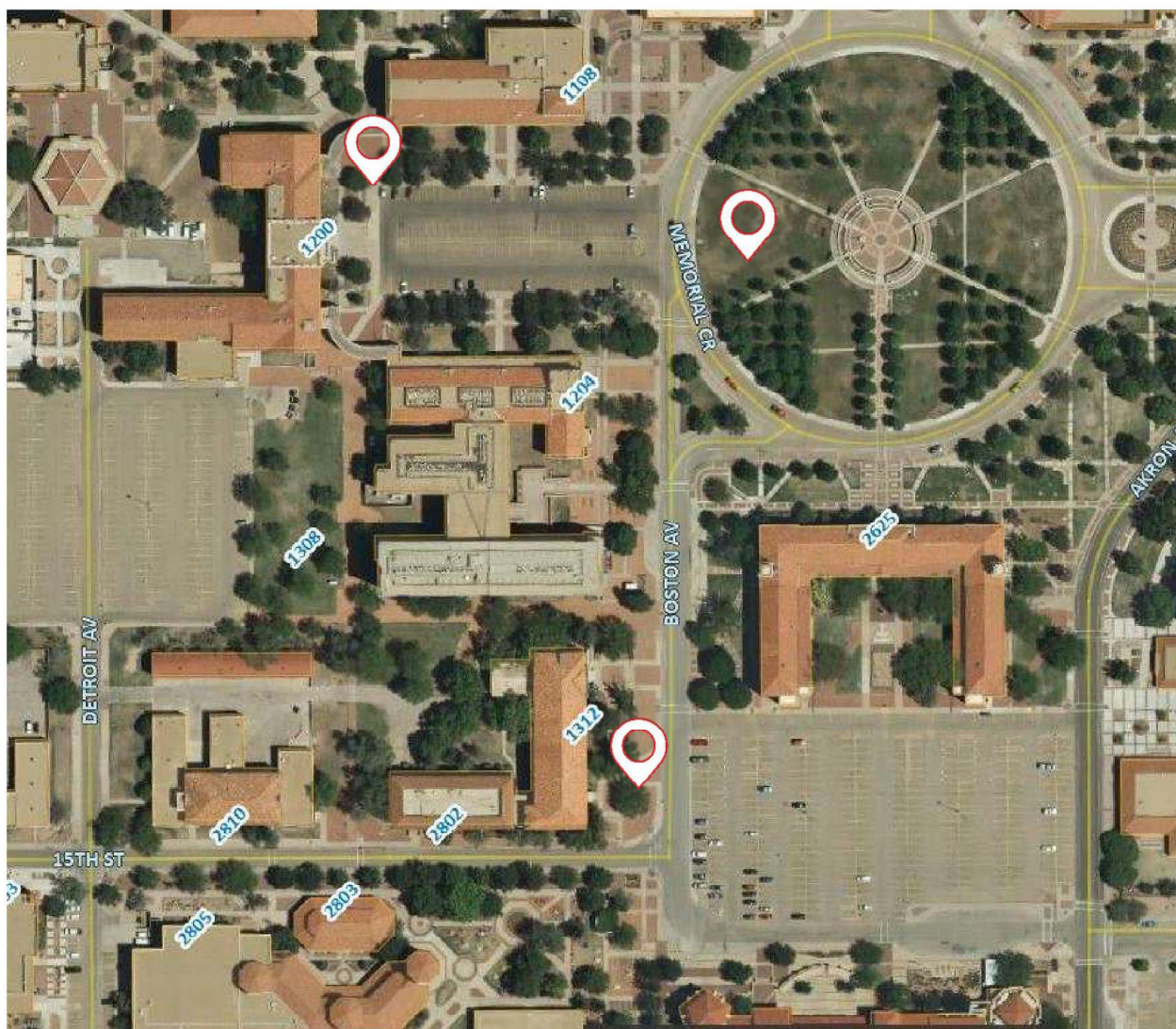




Texas Tech University
STOP 2006 | Lubbock, Texas 79409
T 806.742.3940



Texas Tech University
 STOP 2006 | Lubbock, Texas 79409
 T 806.742.3940

EMERGENCY ASSEMBLY POINT

Texas Tech University
STOP 2006 | Lubbock, Texas 79409
T 806.742.3940

CONTACTS

EMERGENCY	911
POLICE (NON-EMERGENCY)	806-742-3931
OPERATIONS	806-742-4677
FIRE MARSHAL	806-742-0146
EMERGENCY MANAGEMENT	806-742-3940
ENVIRONMENTAL HEALTH AND SAFETY	806-742-3876
RISK MANAGEMENT	806-742-0212
INFORMATION TECHNOLOGY	806-742-4357
BUILDING EMERGENCY MANAGER	PAPPAS, DIMITRI DIMITRI.PAPPAS@TTU.EDU 806-834-1103 Jonelle Lewis (Safety Officer) 806-834-1977
MY EMERGENCY ACTION COORDINATOR	HARRISON, KAMERON KAMERON.HARRISON@TTU.EDU 806-787-7524
	QUITEVIS, EDWARD EDWARD.QUITEVIS@TTU.EDU 806-834-3066
	PEDRECH, ADRIENNE APEDRECH@TTU.EDU 806-834-6508
	MAYER, MF MF.MAYER@TTU.EDU 806-834-3689
	GORDEN, JOHN JGORDEN@TTU.EDU 806-834-0044

	SUROWIEC, KAZIMIERZ KAZ.SUROWIEC@TTU.EDU 806-834-3541;
	KORZENIEWSKI, CAROL CAROL.KORZENIEWSKI@TTU.EDU 806-834-3551
	SHI, HUAZHONG HUAZHONG.SHI@TTU.EDU 806-834-7214
	SMITH, ADAM AW.SMITH@TTU.EDU 806-834-3551



TEXAS TECH UNIVERSITY
Division of Safety & Security

Emergency Management™

emergencymgmt@ttu.edu | 806-742-3940