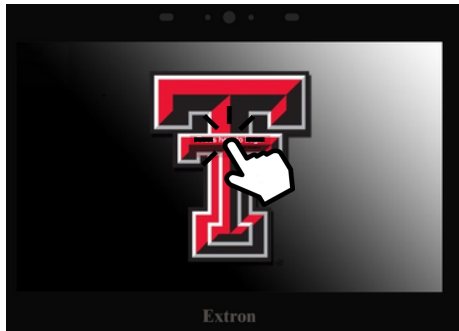




ClickShare: Laptop Edition

PART 1: Power On Touch Panel

STEP 1: Press center of Double T to turn ON audio visual system from the Touch Panel.

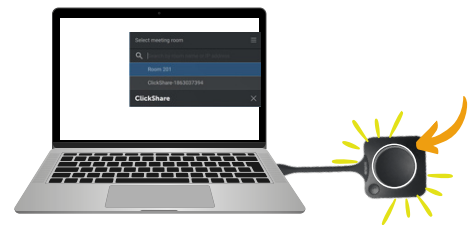


STEP 2: Press ClickShare input



PART 2: Connect Device to ClickShare (USB or USB-C)

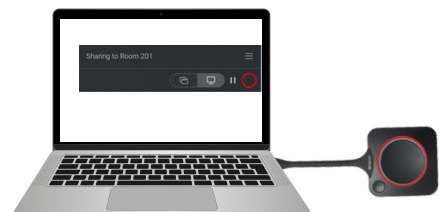
- 1 Plug in ClickShare Adapter into your device. Side pop-up will appear & ask to select the correct meeting room. A WHITE circle will blink indicating it's connecting.



- 2 Once you select the correct meeting room, the WHITE circle will stop blinking indicating it is ready for use. Press the circle once you are ready to use.



- 3 The circle will become RED indicating it is in *presentation mode*. Your device's display will be broadcasted onto the screen.



- 4 Share your content!

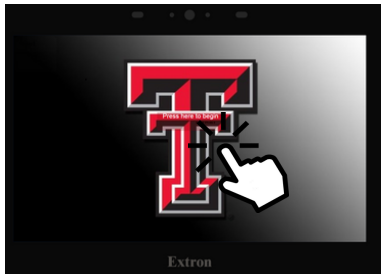
****Once you are done, press the RED circle to disable presentation mode.****



ClickShare App (White Background)

PART 1: Power On Touch Panel

STEP 1: Press center of Double T to turn ON audio visual system from the Touch Panel.



STEP 2: Press ClickShare

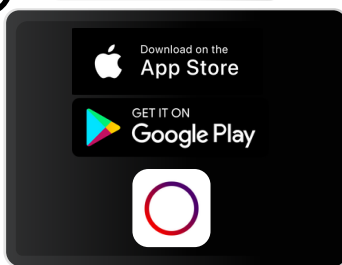


STEP 3: ClickShare background displayed on screen.



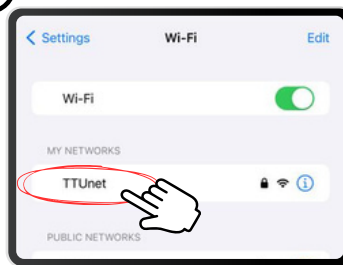
PART 2: Connect Device to ClickShare App

①



Download or
Open ClickShare
App

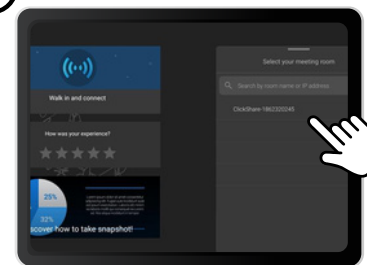
②



Go to Settings, select
“TTUnet”

****Tip: eRaider single sign-on.****

③



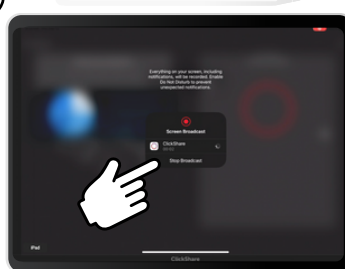
Go back to ClickShare
App & select your
meeting room.

④



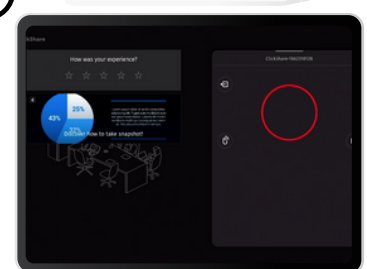
Press the center of the circle
when you are ready to use.
Enter 4-digit passcode shown
on the screen.

⑤



Press “Start
Broadcast/Now” and
it will begin a count
down.

⑥



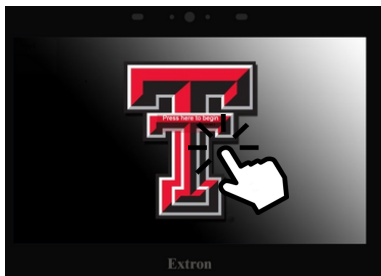
The red circle indicates
you are in *presentation
mode*. When you’re done,
press the red circle to
disconnect.



ClickShare App (Black Background)

PART 1: Power On Touch Panel

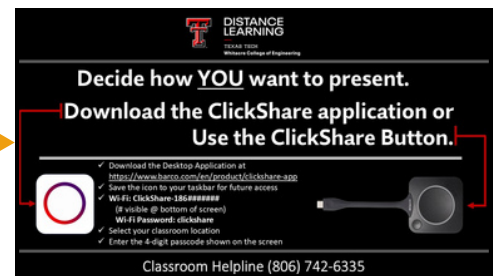
STEP 1: Press center of Double T to turn ON audio visual system from the Touch Panel.



STEP 2: Press ClickShare

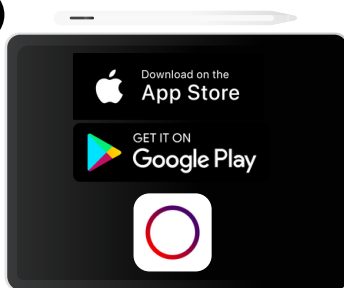


STEP 3: ClickShare background displayed on screen.



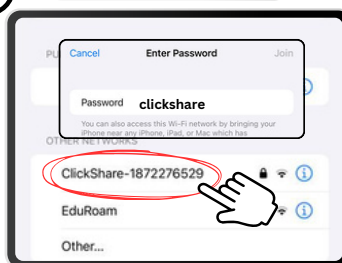
PART 2: Connect Device to ClickShare App

①



Download or
Open ClickShare
App

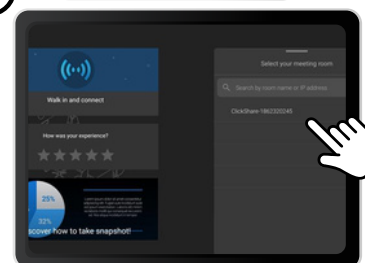
②



Go to Settings, select Wi-Fi,
choose “ClickShare-186xxx,”
enter password (**clickshare**).

****Tip: # visible @ bottom of screen****

③



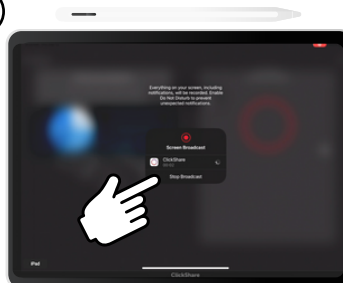
Go back to ClickShare
App & select your
meeting room.

④



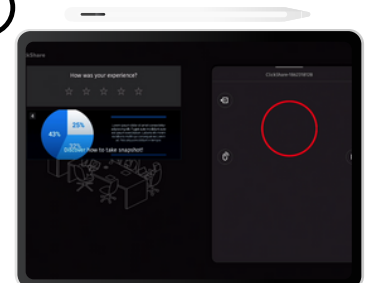
Press the center of the circle
when you are ready to use.
Enter 4-digit passcode shown
on the screen.

⑤



Press “Start
Broadcast/Now” and
it will begin a count
down.

⑥



The red circle indicates
you are in *presentation
mode*. When you’re done,
press the red circle to
disconnect.