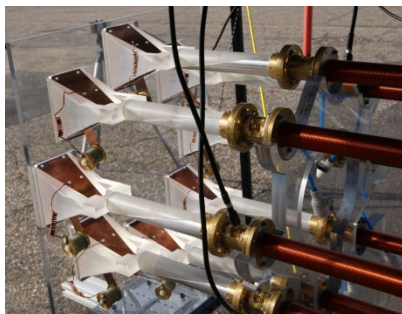
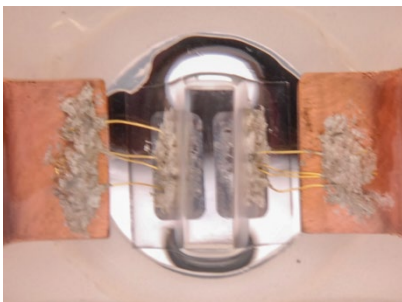
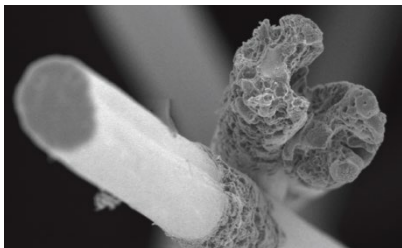




CENTER FOR PULSED POWER & POWER ELECTRONICS

TEXAS TECH
Whitacre College of Engineering



Faculty Opening in Electrical and Computer Engineering Texas Tech University

2025

Texas Tech University - The Department of Electrical and Computer Engineering (ECE) invites applications for a tenure-track position at the Assistant, Associate, or Professor level with a targeted start date of January 2026. Candidates should have a research background in **Electromagnetic Pulse Research, Pulsed Power, Power Electronics and Power Systems**, Transient Computational Electromagnetics, or closely related fields. The successful candidate will complement and contribute to a large existing Research [Center](#).

Candidates must hold a doctorate in Electrical Engineering or a closely related field. The successful applicant will be expected to teach both undergraduate and graduate courses, develop new courses, and establish a robust research program. This includes securing external funding and producing archival publications. Candidates should also be prepared to engage in professional service activities and collaborate within the department and across disciplines. Any candidate must be able to work in an environment conforming to ITAR requirements. Interested applicants should email their CV, a cover letter with a brief statement of research and teaching interests, and the names of at least three references to the Search Committee chair. Andreas.Neuber@ttu.edu.

Go here to apply:
[40724BR](#)

Choose "search
openings" link and
search for
Requisition ID –
40724BR

Applications will be accepted on a rolling basis until the position is filled. We actively encourage applications from all those who can contribute to the excellence of the academic community at Texas Tech University through their research, teaching, and/or service.

ABOUT THE COLLEGE: The Whitacre College of Engineering at Texas Tech University comprises seven academic departments: Electrical & Computer, Chemical, Civil & Environmental & Construction, Industrial, Mechanical, Petroleum, and Computer Science. It offers over thirty degree-programs to nearly 6,600 students, including more than 1,300 graduate students. Research funding has seen significant growth, with awards totaling \$36 million in FY'24. The college's major research strengths include wind science & engineering, pulsed power and power electronics, microscale and nanoscale devices and semiconductor materials, medical imaging, bioengineering, energetics, intelligent software systems, and polymer materials. Texas Tech University, classified as a Carnegie Doctoral/Research University, enrolls approximately 40,000 students across 10 colleges.

ABOUT THE CITY: Lubbock, home to 300,000 residents, offers a balanced cost of living and a thriving, diverse economy. Anchored by Texas Tech University, the city also boasts a robust healthcare sector, plentiful retail and dining options, and strong agriculture, manufacturing, and energy industries. Families will find excellent educational opportunities with three independent school districts and numerous private and religious schools. Travel is a breeze with Lubbock Preston Smith International Airport, which is serviced by several national airlines. Experience the beauty of the Texas South Plains with stunning sunrises and sunsets, and enjoy the pleasant weather that comes with 265 days of sunshine per year at an elevation of 3,250 feet. Lubbock's friendly southwestern climate makes it a great place to live and thrive.