

# OpenSFS Annual Member Meeting

May 7, 2024





Home

Agenda

Call for Presentations

Student Support

Getting Here



Thank you to our sponsors for supporting LUG 2024!

## Platinum Sponsors



**Hewlett Packard  
Enterprise**



## Silver Sponsors



# Agenda

- OpenSFS Supporters
- What is OpenSFS?
- OpenSFS Board Elections
- OpenSFS Financials
- Community Events



# OpenSFS Supporters



# OpenSFS and the Lustre Community

- OpenSFS facilitates a community around Lustre
  - Organization for both Vendors (Participants) and Users (Members) to discuss features and directions
- Promote Lustre and the Lustre community
  - Ensure Lustre remains vendor-neutral, open, and freely downloadable
- Organize the Lustre Users Group conference
- Does Not
  - Fund Lustre development





# LUG Survey

- Short question survey to assess the event
- We use the feedback to revise the event each year
- <https://eventreg.ads.ttu.edu/event/15/surveys/1>



# Board Nominating Committee

- Committee

- Cameron Harr – LLNL
- Kristy Kallback-Rose – LBNL
- Joe Mervini – Sandia

- Process

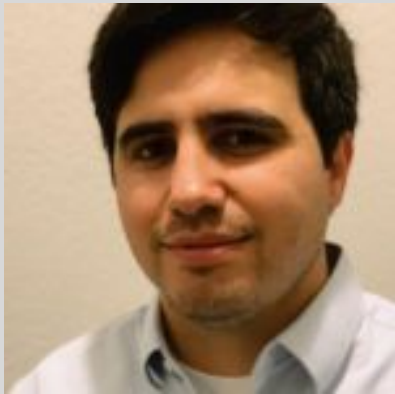
- Reached out to active people in Member organizations
- Found 5 candidates for the 3 open positions





# Board Elections

- **Dominic Manno** was elected for a 2-year term as Vice President 🎉
- **Tom Crowe** was elected for a 2-year term as Secretary 🎉
- **Shawn Hall** was elected for a 2-year term as Director at Large 🎉



Dominic Manno  
OpenSFS Vice  
President



Tom Crowe  
OpenSFS Secretary



Shawn Hall  
Director at Large

# 2024 OpenSFS Board



President:  
Megan Larko  
Translucent



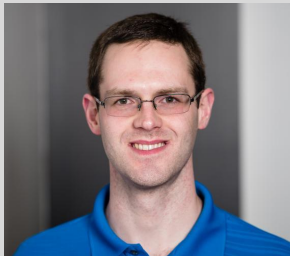
Vice President:  
Dominic Manno  
LANL



Secretary:  
Tom Crowe  
Indiana University



Treasurer:  
Leo Saavedra  
LBNL



Director at Large:  
Shawn Hall  
Jump Trading



Director at Large:  
Sarp Oral  
ORNL

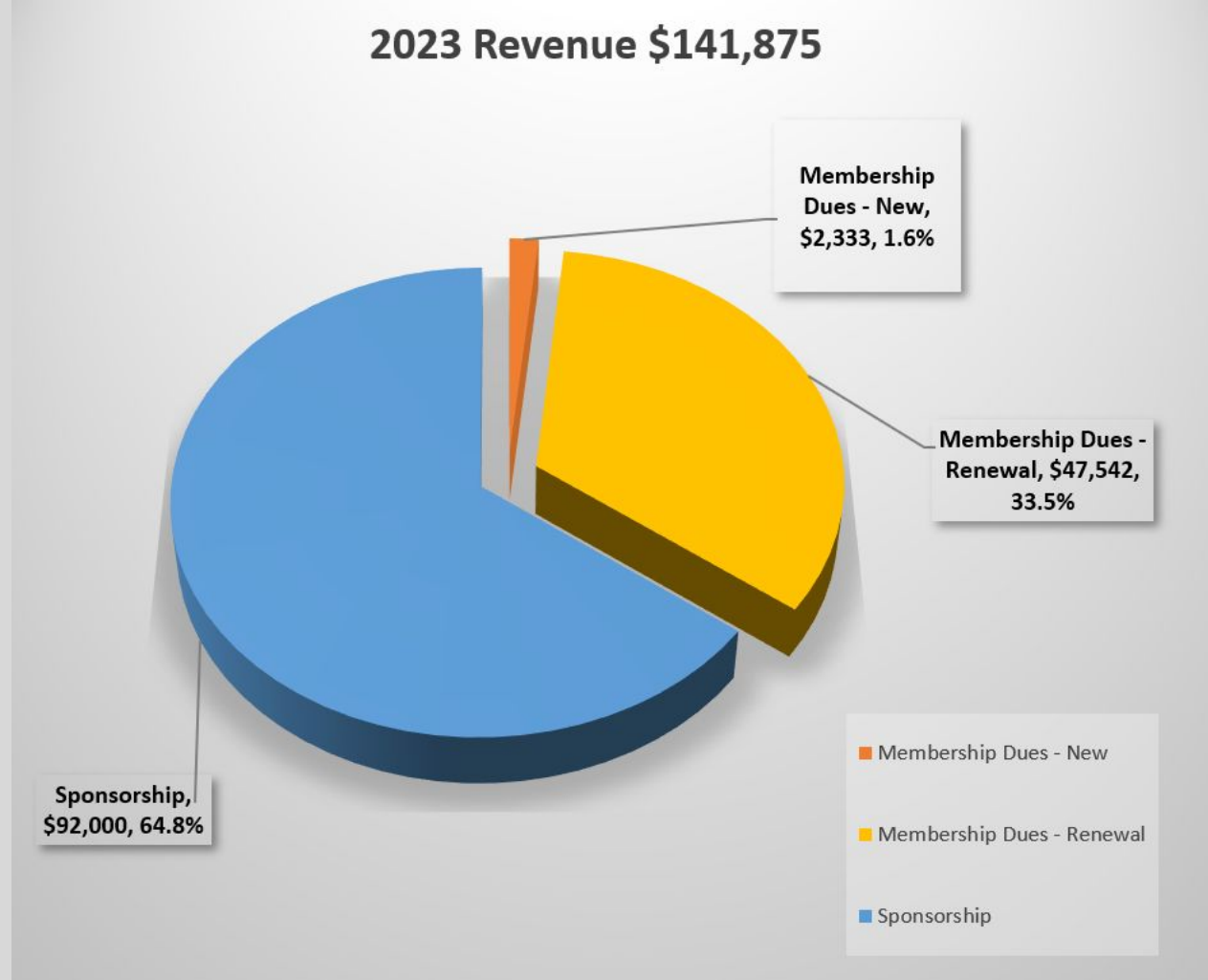


# Finances

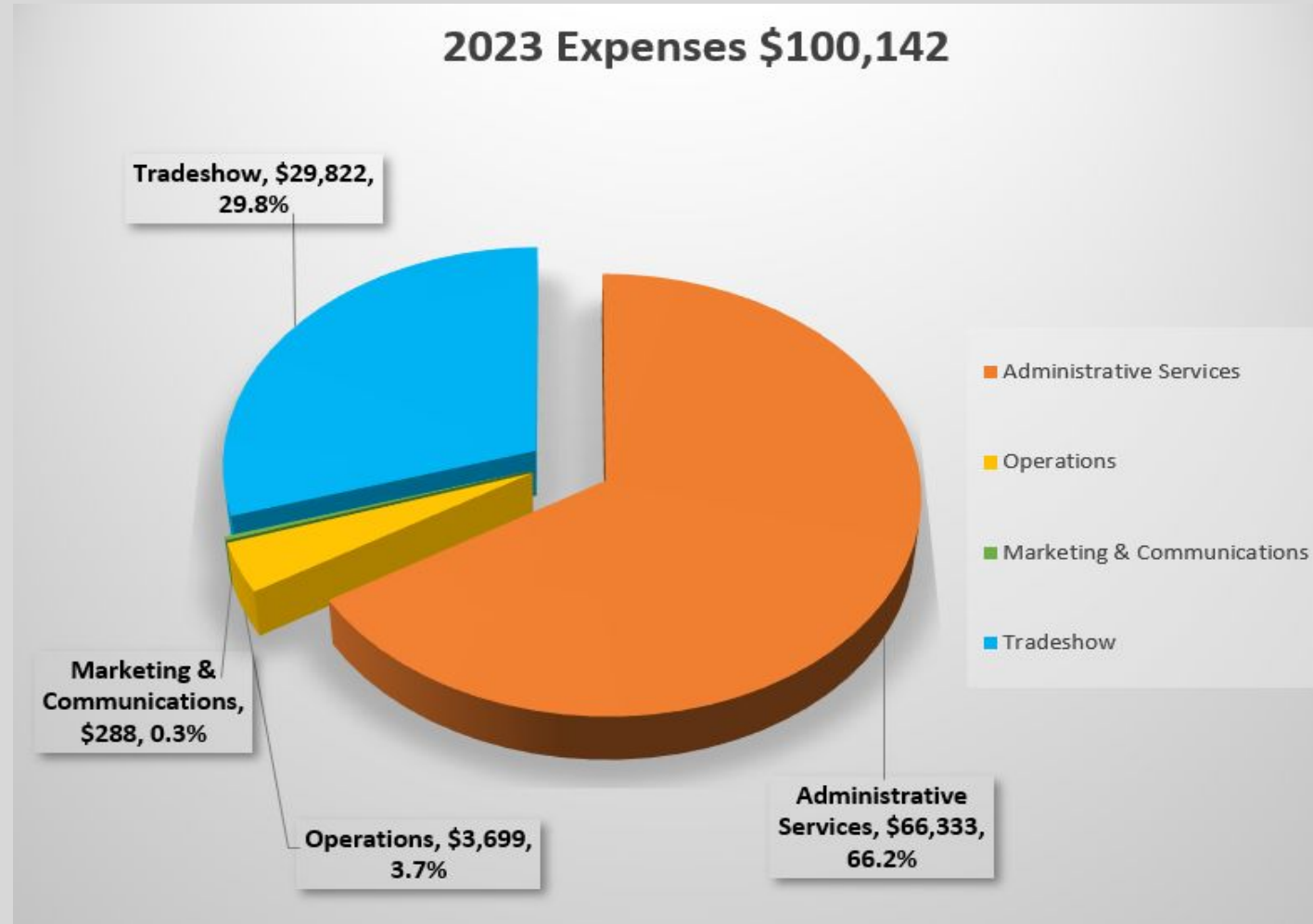
- 2023 Actual Results
- 2024 Budget
- 2024 Cash Projection



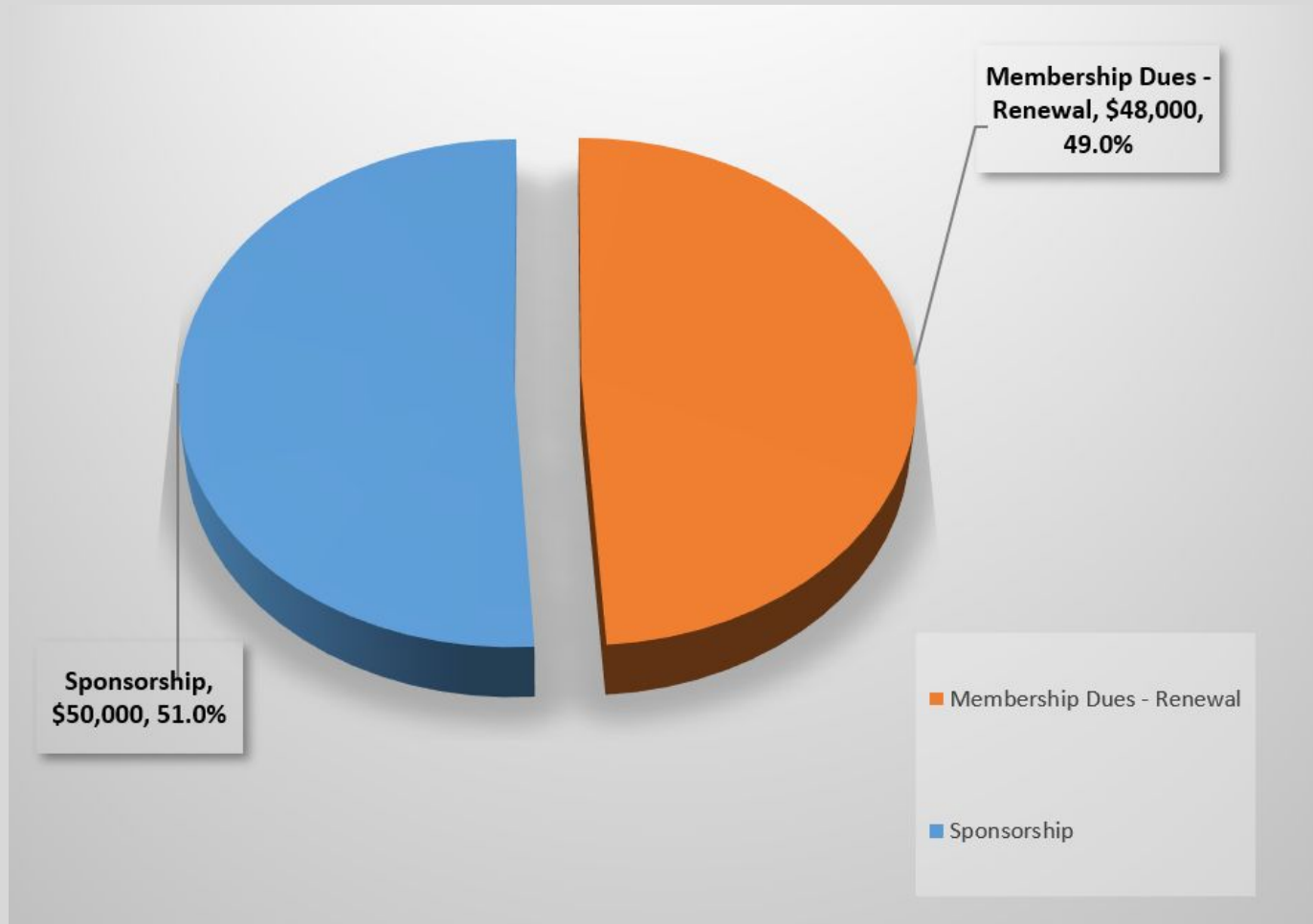
# 2023 Finances Revenue



# 2023 Finances Expenses

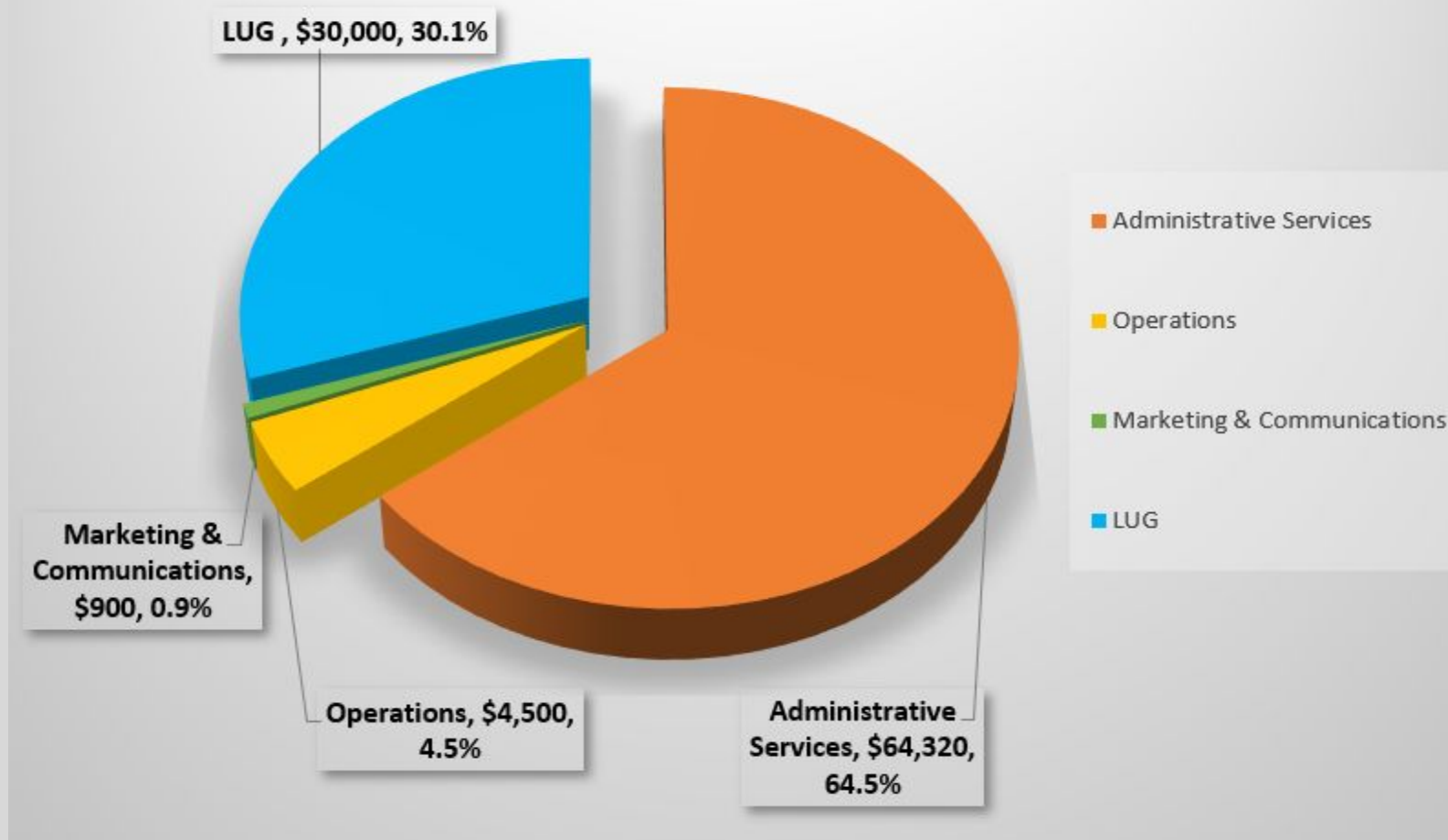


# 2024 Budget Finances Revenue



# 2024 Budget Finances Expenses

2024 Budgeted Expenses \$99,720





# 2024 Cash Projection

Beginning Bank Balance

## Cash Inflows

Total Membership Dues - New

Total Membership Dues - Renewal

Lug Sponsorships / Event Revenue

## Total Cash Inflows

## Cash Outflows

Audit / CPA Costs

Legal Fees

Trademark Expenses

Management Services

General Office Expenses

Bank Fees

Insurance

Web Site Expenses

Events

## Total Cash Outflows

Ending Bank Balance

Actual			Forecast									TOTAL 2024
Jan	Feb	Mar	Apr	May	Jun	Jul	Aug	Sept	Oct	Nov	Dec	
310,150	308,525	303,600	310,600	307,850	315,025	308,675	306,750	302,325	298,375	310,425	313,500	
-	-	-	-	-	-	-	-	-	-	-	-	-
3,000	1,000	6,000	2,000	-	2,000	3,000	2,000	1,000	17,000	8,000	7,000	52,000
-	-	6,000	-	44,000	-	-	-	-	-	-	-	50,000
3,000	1,000	12,000	2,000	44,000	2,000	3,000	2,000	1,000	17,000	8,000	7,000	102,000
-	-	-	-	2,000	600	-	-	-	-	-	600	3,200
-	-	-	-	1,500	-	-	1,500	-	-	-	1,500	4,500
-	-	-	-	-	2,500	-	-	-	-	-	-	2,500
4,500	4,500	4,500	4,500	4,500	4,525	4,500	4,525	4,500	4,525	4,500	4,500	54,075
25	25	25	25	25	325	25	25	25	25	25	25	600
75	25	200	200	200	225	200	200	225	200	200	225	2,175
-	-	-	-	125	100	125	100	125	125	125	550	1,375
25	25	25	25	75	75	75	75	75	75	75	75	700
-	1,350	250	-	28,400	-	-	-	-	-	-	-	30,000
4,625	5,925	5,000	4,750	36,825	8,350	4,925	6,425	4,950	4,950	4,925	7,475	99,125
308,525	303,600	310,600	307,850	315,025	308,675	306,750	302,325	298,375	310,425	313,500	313,025	313,025

Please note: The Projected Ending Cash for 2024 is an estimate based on forecasted data. It is subject to change as the actual data differs from forecasted data. It is not a guarantee of the ending cash balance at any period in time.



# Events

- LUG'24 - Hosted by TTU
  - → You are here ←
- ISC'24 BoF
  - Co-hosted by EOFS and OpenSFS
  - May 14, 2024
- LAD'24
  - TBA
- SC'24
  - Lustre Community BoF (planned)
- LUG 2025 / 2026 / 2027
  - If interested in hosting a future LUG, please contact OpenSFS

**Other events to share with the community?**



# LAD 2024

- Guillaume Courrier - CEA



# Documentation Working Group

- Based on previous survey - interest in improving Lustre documentation
- Looking for 1-2 more leads for working group
- Working group charge would be
  - identify reasons documentation may be inadequate
  - identify areas needing improvement
  - recommend actions to improve documentation and prioritization

Contact [dwg@lists.opensfs.org](mailto:dwg@lists.opensfs.org) if interested in participating



# Marketing Initiative

- based on feedback from SC'23 Lustre BOF
  - positive marketing for Lustre as counterpoint to new storage solutions
- contracting with marketing company to construct pro-Lustre materials
  - OpenSFS members will provide technical input
  - vendor agnostic



# Developer Day Summary

- Peter Jones - Whamcloud
- 22 Participants from 13 organizations
- Activity Highlights
  - Dynamic Nodemaps discussion (LU-17431)
  - ZFS 2.2 build and testing
  - IPv6 test framework changes (LU-16822)
  - Lustre dev infrastructure tutorial
  - FLR Erasure Coding discussion
  - Coverity testing discussion
  - Various enhancements (LU-17775/LU-17316/LU-17551)



# LUG'24 Hosting Committee

- Dr Alan Sill-Manning Dir, HPCC (TTU)
- Misha Ahmadian - Research Associate, HPCC (TTU)
- Jessi Holeman - Business Coordinator, HPCC (TTU)
- Dr Yong Chen - Interim Chair, HPCC (TTU)
- Stephane Thiell (Stanford) - PC Chair
- Brad Gipson (ORNL) - Student Chair
- Jesse Hanley (ORNL) - Student Co-chair & PC co-Chair
- Megan Larko (OpenSFS)
- Shawn Hall (OpenSFS)
- Kirill Lozinskiy (OpenSFS)
- Sarp Oral (OpenSFS)
- Kevin Harms (OpenSFS)

# Thanks!







Thank you!

