

Bienvenue ようこそ
स्वागतम् Willkommen
Karibu Bem vinda
欢迎 स्वागत है
Bienvenido
دی دم آ شوخ 환영 Kaabo



TEXAS TECH™

#YouAreWelcomeHere

TTU ISSS | Exchange Student Guide

الهاك желанный

TEXAS TECH UNIVERSITY

FROM HERE, YOUR JOURNEY BEGINS.



TEXAS TECH™

Be Fearless.

CONTENTS

Academics	4
Spirit & Tradition	6
Lubbock, Texas	8
International Admissions	10
Estimated Cost of Attendance	12
Scholarships	13
Resources and Services	14
University Career Center	15
Undergraduate Majors	16
FAQ	18
Contact	19

YOU ARE WELCOME TO...

Discover yourself and become part of something innovative! Explore new opportunities in a place where you are encouraged to be the best version of yourself. Get to know the friendly culture that is West Texas. You are welcome here at Texas Tech, and we will be here for you every step of the way! Let's get started.

ACADEMICS

DREAM, THRIVE, AND ACHIEVE.

With 12 colleges and schools offering hundreds of academic programs, the opportunities to influence the world and succeed are endless. Ranked as a Tier 1 Carnegie Research Institution, Texas Tech has more than 80 specialized centers and institutes that support research in a variety of disciplines. Internationally recognized faculty and highly trained staff work closely with students to provide support. Here you can find your niche to dream, thrive, and achieve success!

Inspire Change.

20:1

Student to Teacher Ratio

Tier 1

Research University
Carnegie Classification

#105

Top Public Universities in the U.S.
U.S. News & World Report, 2019

150

Total
Undergraduate Degrees

100

Total
Graduate Degrees

50

Total
Doctoral Degrees



Engage in New Traditions.

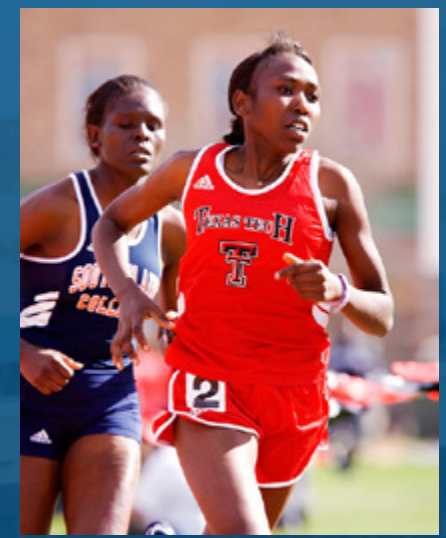
SPRIT & TRADITION

GET INVOLVED AND MAKE MEMORIES.

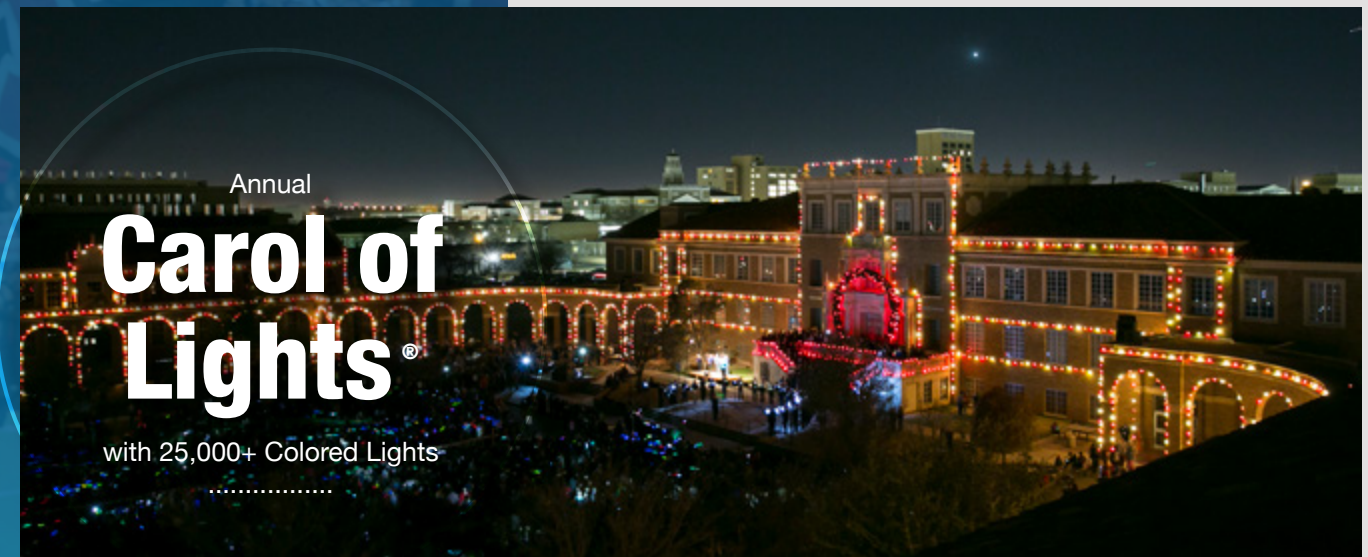
Becoming part of the Red Raider family is more than just wearing Red and Black or attending sporting events. It is about discovering who you really are in a new culture that allows you to express yourself freely. It is about joining one of the more than 450 student organizations on campus and making an impact. It is the peer-to-peer connection with your Global Guide that will make you feel right at home as you transition to our campus. It is about sharing cultures and making new memories.



Unlimited Access to
**Sporting
Events**
with Student Tuition



Annual
Arbor Day
Tradition



Annual
**Carol of
Lights®**
with 25,000+ Colored Lights

LUBBOCK, TEXAS

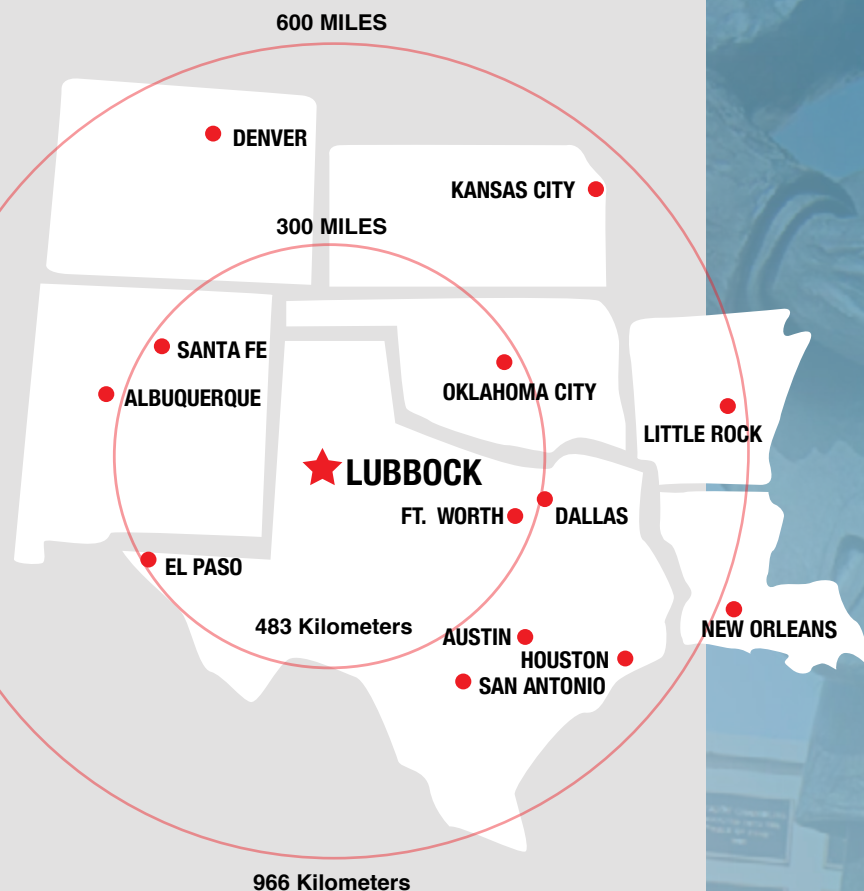
FIND YOUR HOME AWAY FROM HOME.

As one of the best college towns in the nation, Lubbock offers all the conveniences of a large city, but with a small town feeling. Located in the panhandle of West Texas, the city is only hours away from other metropolitan areas like Austin, Dallas, and Houston. Both the campus and surrounding community are culturally diverse with a vibrant art and music scene, museums, coffee shops, and entertainment venues. Lubbock is well known for its hospitality and friendly atmosphere—creating a home away from home for international students.

Lubbock Averages

262

Days of Sunshine



Embrace a New Culture.

International
**Restaurants
and Markets**

36

Museums, Libraries,
& Arts Centers



More Than

75

Venues & Parks



TRAVEL, LEARN, DISCOVER ACCESS OPPORTUNITY.

BEFORE ACCEPTANCE

Students enrolled in one of Texas Tech's exchange partners who would like to attend Texas Tech for a semester or year must be nominated by their home university's international office. Nominations should be sent directly to the Alternative Responsible Officer (ruby.oku@ttu.edu). Following the nomination, students will receive instructions from the Alternative Responsible Officer explaining their next steps and the online application process. Students who are accepted to the Texas Tech School of Law are required to pay the \$300 mandatory orientation Fee in addition to meals and accommodation.

NOMINATION DEADLINES ARE LISTED BELOW FOR EACH TERM:

March 1

Fall and/or Academic Year (Fall - Spring)

September 15

Spring and/or Calendar Year (Spring - Fall)

February 15

Summer (May - August)

APPLICATION DEADLINES:

April 1

Fall and/or Academic Year

October 15

Spring and/or Calendar Year

DOCUMENT REQUIREMENTS

The items below should be submitted in your online application to the admissions office. Because of the time required to obtain immigration documents, it is important to submit the required documents in a timely manner. These documents are listed in order of submission priority and should be submitted to the online application by the deadlines listed.

- ☐ **Official transcript from your home university**
Undergraduates must have an equivalent of a 2.5 US grade point average (GPA) to be accepted in to the university and a 3.0 GPA to be accepted into the Rawls College of Business. Graduate and Law students must also have a 3.0 GPA.
- ☐ **Course Request Form**
You can find this form in your application. This form will help the Alternative Responsible Officer enroll you. The course(s) requested can be changed.
- ☐ **English Proficiency**
Your English language proficiency may be verified by any of the following:
 - **TOEFL (79 iBT)**
 - **IELTS (6.5)**
 - **Pearson**
 - **Cambridge Certificate of Proficiency in English**
 - **Cambridge Certificate of Advanced English Language**
- ☐ **Photo of the information pages of your passport.**
Your passport must be valid for 6 months after the end of your term at Texas Tech. The photo must be legible and in color.
- ☐ **Documentation of Financial Support**
Evidence of financial support (\$10,000 for one semester or \$21,000 for the academic year) must be provided, as required by the U.S. Department of State. This should be an original document, such as an original bank statement or a letter signed by an official of a financial institution, stating the availability of funds, and translated to English if necessary. You will also need these documents for your visit to the U.S. Embassy or Consular Office for your visa appointment.

AFTER ACCEPTANCE

After students are notified of acceptance, they complete the steps below.

- Confirm participation by pressing '**submit**' in your online application
- Submit the meningitis form if under 22 years of age.
- Provide insurance documentation that meets the State Department requirements or enroll in Texas Tech's insurance.
- Sign up for on or off-campus accommodation.
- Upload a photo of yourself for Texas Tech student ID.

TRAVEL
Learn
DISCOVER

COST OF ATTENDANCE

INVEST IN YOUR FUTURE.

At Texas Tech, we want you to get the education you deserve. We offer many opportunities for exchange students to continue their success journey at affordable rates.

UNDERGRADUATE ESTIMATES

Estimated Cost of Attendance 2024–2025 per semester.

	Non-Fee Paying Reciprocal	Fee Paying Undergraduate Exchange	Fee Paying Graduate Exchange
International Non-Resident Tuition & Fees	\$0	\$12,225.50	\$8, 959
Living Expenses	\$7,000	\$7,000	\$7,000
Books	\$700	\$700	\$700
Health Insurance	\$1,885	\$1,885	\$1,885
Total	\$9,585	\$21,810.50	\$18,544

The above costs are based on the 2024-2025 academic year and are subject to change. Undergraduate fee-paying tuition based on 15 hours. Graduate fee-paying tuition based on 9 hours. Health insurance listed is the TTU insurance; if you wish to bring your home insurance and it meets the minimum requirements, this cost will be waived. To be eligible as a non-fee paying reciprocal, school must be in balance with Texas Tech. Books and living expenses are based on high estimates provided by Texas Tech.

Achieve
Success.

HOUSING OPTIONS

There are reserved rooms in the on-campus residence halls for exchange students. Students who live on campus are required to enroll in a meal plan. The average cost of living on campus for one semester is \$7,000. This includes the meal plan, room, and fees associated with the plan.

Exchange students are permitted to live off-campus should they wish, however exchange students are responsible for all reservations, leases, and payments. We cannot assist in this process.

ON-CAMPUS ORIENTATION

Exchange students are required to participate in an on-campus orientation after arrival. Each orientation will include immigration information, cultural information, academics, and more. Exchange students are also welcome and encouraged to participate in the International Student Life program which includes multiple cultural programs throughout the semester. A few examples are:

Airport Pickup

Welcome Bar-B-Que

Homecoming Parade *Fall only*

Culture Fest *Fall only*

Thanksgiving Dinner *Fall only*

Day Hikes to local hiking grounds

Athletic Events

Worldwide Showcase *Spring only*

Spring Break trip to Santa Fe, New Mexico *Spring only*

Dare to
be Elite.

RESOURCES AND SERVICES

EXPLORE THE BENEFITS.

Texas Tech offers International Red Raiders a vast array of support services to assist with immigration, cultural transition, writing skills, student health, student counseling/advising, and career information. The TTU campus is also among the safest in the nation with 24/7 police surveillance and safety emergency stations around campus. TTU has been rated 4.5 stars out of 5 on the basis of being LGBTQIA friendly. This feeling of support, protection, and comfort provides the freedom you need to attain success.

More Than
**30
Events**
with International
Student Life
.....

245 Foot
**Leisure
Pool**
and Lazy River
.....

UNIVERSITY CAREER CENTER PLAN YOUR CAREER.

Texas Tech students not only receive an excellent education, but also learn the skills and knowledge necessary to obtain internships and job offers around the world. Regardless of the field of study, there are faculty and staff across campus preparing students for successful careers.

Texas Tech has been ranked among the top universities in the nation in engineering, science, business, and research. Personal growth and career building happens in many different ways, and at Texas Tech, you will have the opportunity to create your own pathway to success!

Comprehensive
ISSS

International Student &
Scholar Services Division
for Immigration Support
.....

Safety
24/7

Police Patrol, Surveillance, and
Access to Emergency Phones
throughout Campus
.....



UNDERGRADUATE MAJORS

INFLUENCE

THE WORLD.

Whether you are continuing your education or pursuing your first big career opportunity, it is our mission to help you succeed in this journey. When you graduate, you will have the knowledge and skills you need to immediately contribute to your career of choice. It is no wonder the Wall Street Journal ranked us amongst the top 25 colleges in the nation for graduating the most well-prepared students. The outcome: studying at Texas Tech University will open doors for you to begin a successful career and your Red Raider family will be with you every step of the way!



COLLEGE OF AGRICULTURAL SCIENCES & NATURAL RESOURCES

- Agribusiness**
International Agribusiness
- Agricultural & Applied Economics**
International Agribusiness
- Agricultural Communications**
- Agricultural Education**
- Animal Science**
Business, Companion Animal Science, Animal Production, Equine Assisted Therapy, Equine Production, Equine Science, Meat Science, Meat Science Business, Science, Pre-Veterinary, Production Science
- Conservation Law Enforcement**
- Food Science**
Science, Industry
- Landscape Architecture**
- Natural Resources Management**
Conservation Science, Fisheries Biology, Range Conservation, Ranch Management, Wildlife Biology
- Plant & Soil Science**
Crop Science, Environmental Soil and Water Science, Horticultural and Turf Science, Local Food & Wine Production, Viticulture and Enology

COLLEGE OF ARCHITECTURE

- Architecture**
- Architecture/General Business (dual)**
- Architecture/Civil Engineering (dual)**

COLLEGE OF ARTS & SCIENCES

- Anthropology**
Forensic Anthropology
- Biochemistry**
- Biology**
Ecology & Environmental Biology
- Cell & Molecular Biology**
- Chemistry**
- Economics**
- English**
Creative Writing, Literature & Language, Teacher Certification
- General Studies**
- Geography**
- Geosciences**
Environmental, Geology, Geophysics
- Global Studies**
- History**
- International Economics**
- Kinesiology**
- Languages & Cultures**
Classics, French, German, Russian Language & Area Studies
- Mathematics**
- Microbiology**
- Philosophy**
- Physics**
Applied Physics, Astrophysics
- Political Science**
American Politics, Comparative Politics, International Politics, Policy & Public Administration
- Psychology**
- Social Work**
- Sociology**
- Criminology**

- Spanish**
Literature & Cultures of the Spanish Speaking World, Spanish in Global Context, Spanish Language Studies
- Sport Management**
- Technical Communication**

JERRY S. RAWLS COLLEGE OF BUSINESS ADMINISTRATION

- Accounting**
- Energy Commerce**
- Finance**
Real Estate
- General Business**
Construction Management
- Information Technology**
Application Development, Business Analysis, Cyber Security, Networking, Web Application Design
- Management**
Human Resources Management
- Marketing**
Sales, Customer Relationship Management, Supply Chain Management

COLLEGE OF EDUCATION

- Certification for Teaching**
Bilingual, English as a Second Language, Special Education
- Education (2+1 Tech Teach, Elementary & Middle Level, Secondary)**

EDWARD E. WHITACRE JR. COLLEGE OF ENGINEERING

- Chemical Engineering**
- Civil Engineering**
- Computer Engineering**
- Computer Science**
- Construction Engineering**
- Electrical Engineering**
- Environmental Engineering**
- Industrial Engineering**
- Mechanical Engineering**
- Petroleum Engineering**

COLLEGE OF HUMAN SCIENCES

- Apparel Design and Manufacturing**
- Community, Family & Addiction Sciences**
- Early Childhood**
Teacher Certification EC-6th
- Family & Consumer Sciences**
Secondary Teacher Certification
- Human Development & Family Studies**
Secondary Teacher Certification
- Human Sciences**
- Interior Design**
- Nutrition**
Health & Wellness, Nutrition, Pre-Professional Health, Secondary Teacher Certification
- Nutritional Sciences & Dietetics**
- Personal Financial Planning**
- Restaurant, Hotel & Institutional Management**
- Retail Management**
Corporate/Research, Store Management

HONORS COLLEGE

- All majors, from any college, can also be in the Honors college.*
- Honors Arts & Letters**

COLLEGE OF MEDIA & COMMUNICATION

- Advertising**
- Communication Studies**
- Creative Media Industries**
- Digital Media & Professional Communication**
- Journalism**
- Media Strategies**
- Public Relations**

J.T. & MARGARET TALKINGTON COLLEGE OF VISUAL & PERFORMING ARTS

- Art**
Art Education, Art History, Graphic Design, Photography, Studio Art
- Dance**
- Interdisciplinary Arts Studies**
- Music**
Composition, Music Education, Performance, Theory
- Theatre Arts**
Acting, Design/Technology, Musical Theatre

OFFICE OF THE PROVOST

- Applied Leadership**
- Exploratory Programs for Undeclared**
Arts & Humanities, Business & Industry, Multidisciplinary, Public Service, Social Sciences, STEM
- University Studies**
Agricultural Leadership, Applied Leadership, Human Resource Development, Integrative Studies, Journalism & Visual Media, Legal Studies, Mexican American Latina/o Studies, Organizational Leadership
- Wind Energy**

***PRE-PROFESSIONAL PROGRAMS**

- Pre-Clinical Lab Sciences*
- Pre-Dentistry*
- Pre-Law*
- Pre-Medicine*
- Pre-Nursing*
- Pre-Occupational Therapy*
- Pre-Optometry*
- Pre-Pharmacy*
- Pre-Physical Therapy*
- Pre-Physician Assistant*
- Pre-Speech, Language & Hearing Sciences*
- Pre-Veterinary*

- Bold: Majors**
- Minors: Specialization & Concentration Within Listed Major*

See a complete listing including graduate degrees at www.admissions.ttu.edu/academics.

**Pre-Professional Programs are not majors*

FREQUENTLY ASKED QUESTIONS / FAQ

Q: What is the difference between the nomination deadline and the application deadline?

A: The nomination deadline is the date in which your home university’s exchange coordinator must nominate you to the TTU exchange coordinator. The application deadline is the date in which you, the student, must have all documents turned in to the Alternative Responsible Officer. This application deadline is usually a month after the nomination deadline.

Q: Our universities are out of balance, can I still come as an exchange student?

A: Yes, but only as a fee-paying student. This means you will be required to pay tuition and fees for an ‘out-of-state-student.’

Q: How do I register for courses?

A: If you are a non-fee paying student (meaning you are paying tuition at your home university, and not at Texas Tech), you will be automatically registered in your courses.

Q: What is the equivalent of ECTS to U.S. Credit Hours?

A: The general rule of thumb is **2.5 ECTS = 1 U.S. Credit Hour**. To be considered full time as an undergraduate, you must be enrolled in **12 U.S. Credit Hours**. This means you will be enrolled in **30 ECTS**. If you are a graduate student, you must be enrolled in **9 U.S. Credit Hours**, or **22.5 ECTS**.

2.5 ECTS	1 U.S. Credit Hours
7.5 ECTS	3 U.S. Credit Hours
22.5 ECTS	9 U.S. Credit Hours
30 ECTS	12 U.S. Credit Hours
37.5 ECTS	15 U.S. Credit Hours

Q: How do I pay my bill (or pay for my on-campus accommodation)?

A: All payments are made via the TTU Ebill available on Raiderlink.

Q: I require assistance in the classroom (mobility, hearing, sight). Are you able to help me with ability accommodations?

A: Yes, we can work with Texas Tech Student Disability Services to connect you with accommodations options and services. We encourage you to disclose any requested assistance as early as possible so we can work with our on-campus team to prepare for your arrival

Q: Can the proof of my financial support be a declaration from my parents/mentor/guardian?

A: Yes, however, you will need a signed affidavit from your parents (meaning the document has been notarized) stating that they will cover you for your entire time in the U.S. You will also need to submit a print out of their bank statement (proving they have enough to cover you).

Q: I am LOVING Texas Tech! How can I extend my time here and do another semester as an exchange student?

A: That’s great! First, we need approval from your home university. After we receive written verification that you have approval from your home university, we can work with our immigration team to get you a program extension.

Q: How do I only sign a 6-month lease for my on-campus accommodation?

A: There is no option to do this online. You will sign up for a 9-month lease (or academic year lease) and the TTU Alternative Responsible Officer will alert the housing office.

Q: A course I want to take says it’s full, can I still take it?

A: It depends. If the course has a ‘waitlist’, then you are welcome to register for it and wait for someone to drop the course. If there is not a ‘waitlist’, you will likely not be able to register for the course.

Q: Every time I try to register I get an error, why is this?

A: You are not automatically permitted into courses at Texas Tech. The majority of the courses offered need prerequisites and since the system cannot track the courses you have taken at your home institution, it shows you an error (usually prerequisite and test score error). Before you attempt to register for a course,you must let Texas Tech know of your desired course(s) so the Alternative Responsible Officer can contact the academic department and permit you.

Q: Which meal plan do you suggest?

A: If you are living off campus and would like to have the option to eat on campus, the Alternative Responsible Officer suggests you get the commuter meal plan. If you don’t enroll in this, you will be paying more for each meal when you eat on campus (you automatically get a discount for each purchase when you use a meal plan). If you are living on campus, it will really just depend on your eating style. Most students choose the smallest meal plan because you can always add more money to the plan if you ever run out.

Q: My visa ends the day the semester ends, however I planned on traveling after the semester. How can I do this?

A: No worries, you are permitted to be in the U.S. for 30 days after the end date on your visa.

Q: Can I work on campus as an exchange student?

A: It depends. You are only legally allowed to work on campus and your job on campus must be related to the field of study in which you are enrolled. For more questions about this, please contact the J-1 Alternative Responsible Officer.

Q: Can I travel out of the country in the middle of my program?

A: It depends on the type of visa you have but usually, yes. Before you leave, however, you will need a travel signature from the J-1 Alternative Responsible Officer. If you do not have this signature, it is likely you will not be let back into the country.

INTERNATIONAL STUDENT & SCHOLAR SERVICES (ISSS) CONTACT

Tina Newton
Director of ISSS
tina.newton@ttu.edu
806.742.3667

Ruby Oku
Senior Advisor/ Designated School Official/ Alternative Responsible Officer
ruby.oku@ttu.edu
806.742.3667

 /TTUinternationalstudentlife
 /ttu_isl



TEXAS TECH™

www.international.ttu.edu | 806.742.3667
601 Indiana Avenue, Lubbock, TX 79409-5004



INTERNATIONAL AFFAIRS

TEXAS TECH
Office of the Provost

