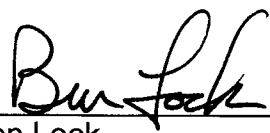


## INDEX OF ATTACHMENTS

- Attachment 1 ASU OP 10.17, International Undergraduate Student Admissions with proposed revisions
- Attachment 2 TTUS FY 2019 Prioritized Audit Plan
- Attachment 3 ASU Authorize expenditures for the Angelo State University Mayer Museum project (DP Stage II) PowerPoint
- Attachment 4 TTU Approve budget increase for the Experimental Sciences Building II (finish-out shell space – final GMP) PowerPoint
- Attachment 5 TTU Authorize expenditures for the Dairy Barn Renovation project (DP Stage II and CMR pre-construction services) PowerPoint
- Attachment 6 TTUHSC El Paso Approve concept and preliminary budget for the Dental Oral Health Clinic in El Paso, TX (DP Stage I) PowerPoint
- Attachment 7 TTUHSC El Paso Approve amendment to a lease agreement in El Paso PowerPoint
- Attachment 8 TTUS Report on Facilities Planning and Construction projects (project data as of 02/04/19) PowerPoint
- Attachment 9 TTUS Facilities Planning and Construction Capital Projects Budget Analysis FY 2010-2019 Report (01/24/2019)
- Attachment 10 TTUS FY 2018 Texas Tech University System Combined Annual Financial Report PowerPoint
- Attachment 11 TTUS Legislative Update 2020-21 Biennium PowerPoint

I, Ben Lock, the duly appointed and qualified Secretary of the Board of Regents, hereby certify that the above and foregoing is a true and correct copy of the Minutes of the Texas Tech University System Board of Regents meeting on February 21-22, 2019.

  
\_\_\_\_\_  
Ben Lock  
Secretary

SEAL

[Minor revision: approved by TTUS Board of Regents, August 8, 2014]



## Angelo State University Operating Policy and Procedure

### OP 10.17: International Undergraduate Student Admissions

**DATE:** February 14, ~~2018~~21, 2019

**PURPOSE:** The purpose of this Operating Policy/Procedure (OP) is to clarify policies concerning international student admissions.

**REVIEW:** This OP will be reviewed in April every three years, or as needed, by the Director of the Center for International Studies and the Director of Undergraduate Admissions with recommended revisions forwarded through the provost and vice president for academic affairs to the president by May 15. This policy may be amended only by action of the Board of Regents of the Texas Tech University System. (*Regents' Rules 05.01.2*)

### POLICY/PROCEDURE

#### Admission of International Undergraduate Students

1. Graduates of foreign secondary schools who have completed the equivalent of at least an American high school diploma (12<sup>th</sup> grade) may apply for admission to Angelo State University by writing to the Center for International Studies and submitting the online application at <https://www.applytexas.org>. The mailing address for the Center for International Studies is ASU Station #11035, San Angelo, TX 76909-1035, and the website address is <http://www.angelo.edu/dept/cis/>.
2. Applicants with foreign academic credentials must provide academic records in the original language with a certified English translation. Applicants who have attended school outside the United States must provide official results of secondary external examinations (e.g., GCE "Ordinary" level exams) on examination board letterhead, certificates of completion of a state secondary school examination, and official transcripts from any university-level studies already completed in the United States or elsewhere. Failure to provide complete information regarding post-secondary level study could result in cancellation of admission.
3. Students whose native language is not English also must present a score of at least 550 (paper-based exam), 213 (computer-based exam), or ~~79~~69 (internet-based exam) on the Test of English as a Foreign Language (TOEFL) or a score of 60 on the Duolingo English Test. Or students may present a score of at least ~~6.5~~6.0 on the International English Language Testing System (IELTS). The TOEFL/IELTS requirement may be waived if the student has attended a U.S. high school or college for at least three consecutive years or if the student is a citizen in a country where English is the native language. Angelo State University will make the final decision regarding approved English speaking countries. A list of approved English speaking countries is on file in the Center for International Studies. Information concerning the TOEFL may be obtained from Educational Testing Service, P.O. Box 899, Princeton, New Jersey 08540, U.S.A. Information concerning the IELTS may be obtained from IELTS

[Minor revision: approved by TTUS Board of Regents, August 8, 2014]

International, 825 Colorado Boulevard, Suite 112, Los Angeles, California 90041, U.S.A.  
Angelo State University does not require ACT or SAT scores of international applicants.

4. International students not living in the United States are encouraged to apply a year in advance. International students are required to verify their ability to support themselves financially. Please visit the Center for International Studies website for more information on the cost to attend. The website address is: <http://www.angelo.edu/dept/international-students/>
5. A nonrefundable application fee is required. An International Money Order or U.S. Postal Money Order or online Flywire payment for the current application fee must accompany the international student application. The website address for Flywire is: <https://www.flywire.com/pay/angelo>. Students who apply on-line through the Apply Texas Application may pay the current application fee with a credit card at the time of application.

**6. OTHER PROVISIONS AND CONDITIONS OF ADMISSION - All other provisions and conditions of admission not covered by the above admission requirements shall be established by the President of the University or his/her designee.**

**6.7. CONDITIONAL ADMISSION** - Conditional admission for international students may be considered for undergraduate students sponsored by a known and responsible organization, institution, corporation, or government, who would be eligible for admission to Angelo State University, except for a deficiency in English language skills as determined by the Center for International Studies. Applicants for conditional admissions must be reviewed and approved by the Center for International Studies. While in this status, students will be enrolled in a recognized Intensive English Program. Upon successful completion of the Intensive English Program and meeting the language requirements for admission, students may then transfer into the appropriate department and college at Angelo State University. Courses completed in the Intensive English Program will not count as transferrable courses.

**7.8. PARTNER INSTITUTIONS** - Reciprocal Exchange, Study Abroad, Hybrid and ELLI students are admitted to Angelo State University on the basis of a contract signed with the international partner university. The Center for International Studies oversees and implements all such agreements. Working with other offices on campus, the Center for International Studies coordinates admission of the students and, working within the framework of the contract and with the partner institution, advises and enrolls these students.

TEXAS TECH UNIVERSITY SYSTEM  
OFFICE OF AUDIT SERVICES  
PRIORITIZED AUDIT PLAN  
Fiscal Year 2019

PRIORITY	ENTITY	AUDIT AREA	BUDGETED HOURS	BUDGET ADJUSTMENTS	STATUS AS OF FEB 11	ACTUAL HOURS	TIME STILL NEEDED	BUDGET vs ACTUAL
		<b>TOTAL ENGAGEMENT HOURS AVAILABLE</b>	<b>21,000</b>					
		<b>REQUIRED AUDITS</b>						
Required	ALL	Audit Report Follow-Up Procedures and Reporting	800		In Progress	511	289	0
Required	ALL	State Auditor's Office, THECB, and Comptroller's Office Misc. Projects	15	(11)				4
		TTUS Contract Audit - HSC Construction Contract			5 In Progress	5		5
		TTU, HSC, ASU 2018 Statewide Federal Financial Audit			In Progress			0
		TTU State Travel Card Use			State Comptroller's Office Complete			0
		TTU Comptroller's Post - Payment Audit			3 In Progress		3	0
		ASU HUB Program Compliance			3 Complete	3		0
Required	ALL	CPRIT Grant Funds	10		External			10
Required	ALL	Contracting and Procurement Processes	200		Compliance			200
Required	TTUS	Texas Tech Foundation, Inc Financial Statements	120		External In Progress	93	5	22
Required	TTUS	Regents, Chancellor, & Presidents Travel and Other Expenses	30		External Complete	35		(5)
Required	TTUS	Risk Management Assessment	100		Risk Management			100
Required	TTUS	Office of Audit Services Annual Report	30		Compliance Complete	22		8
Required	TTUS	Office of Audit Services Annual Plan	100		Compliance			100
Required	TTUS	Office of Audit Services Quality Assurance Activities Review	60		Compliance			60
Required	TTU	Athletics Financial Agreed-Upon Procedures	5		External Complete	2		3
Required	TTU	Texas Tech Public Media Financial Statements	250		External Complete	162		88
Required	TTU	Football Attendance Certification	10		Compliance Complete	22		(12)
New	TTU	Certified Rehabilitation Cost Report - Admin Building			Compliance			80
New	TTU	Perkins Loan Program Liquidation			External In Progress			5
Required	HSC	SACS Financial Statement Review	40		External Complete			40
Required	HSC	Correctional Managed Health Care Contract	150		Compliance			150
Required	HSC	Joint Admission Medical Program Grants - Lubbock SOM	60		Compliance Complete	63		(3)
New	HSC	Texas Higher Education Coordinating Board Nursing Shortage Reduction		25	Compliance Complete	26		(1)
Required	HSC/HSC-EP	Texas Higher Education Coordinating Board Residency Grants	50		Compliance Complete	49		1
Required	HSC-EP	Joint Admission Medical Program Grants - El Paso PLFSOM	60		Compliance Complete	98		(38)
Required	ASU	Carr Foundation Financial Statements	10		External In Progress		10	0
Required	ASU	ASU Foundation, Inc. Financial Statements	5		External In Progress		5	0
		<b>TOTALS FOR REQUIRED AUDITS</b>	<b>2,105</b>	<b>110</b>		<b>1,086</b>	<b>317</b>	<b>812</b>
		<b>AUDITS IN PROGRESS AT AUGUST 1, 2018</b>						
Prior Year	TTU	School of Law	292		Financial/Controls Complete	279		13
Prior Year	TTU	Office of the Registrar	282		IT/Operational/Controls Complete	193		89
Prior Year	TTU	Office of Human Resources	317		Operational/Controls Complete	570		(253)
Prior Year	TTU	Financial Compliance of Grant Funds	469		Compliance In Progress	857	10	(398)
Prior Year	HSC	Parrman Basin Campus Departments - Psychiatry	297		Operational/Controls Complete	322		(25)
Prior Year	HSC-EP	TAC 202 Information Technology Controls Compliance	232		IT/Controls/Compliance Complete	182		50
Prior Year	HSC-EP	Conflict of Interest Management Processes	5		Compliance/Operational Complete	2		3
Prior Year	HSC-EP	Paul L. Foster School of Medicine Department of Pediatrics	322		Financial/Operational Complete	512		(190)
Prior Year	ASU	Distance Education Governance and Security Controls	182		IT/Governance Complete	126		56
Prior Year	ALL	Wrap-up on Audits Included in August BOR Report	52		Complete	90		(38)
		<b>TOTALS FOR AUDITS IN PROGRESS</b>	<b>2,450</b>			<b>3,133</b>	<b>10</b>	<b>(693)</b>
		<b>UNPLANNED SPECIAL PROJECTS AND INVESTIGATIONS</b>						
		<b>Total Hours Budgeted for Special Projects &amp; Investigations</b>	<b>4,200</b>	<b>(473)</b>				<b>3,727</b>
		<b>IN PROGRESS AT AUGUST 1, 2018</b>						
Special		None						0
		<b>BEGUN AFTER AUGUST 1, 2018</b>						
Special	TTU	College of Engineering Scholarships		130	In Progress	124	6	0
Special	HSC-EP	Department of Emergency Medicine Contract Billing Processes		93	Complete	93		0
Special	HSC	Department of Obstetrics and Gynecology		100	In Progress	83	17	0
Special	ALL	Miscellaneous Hotline Projects		150	In Progress	48	102	0
		<b>SPECIAL PROJECTS AND INVESTIGATIONS TOTALS</b>	<b>4,200</b>	<b>473</b>		<b>348</b>	<b>125</b>	<b>3,727</b>
		<b>HIGHEST PRIORITY</b>						
	TTUS	LP&L Power Purchase Agreement	60		Complete	184		(124)
	TTUS	Office of Investments	400		Financial/Operational			400
	TTU	Time & Effort Reporting Processes	200		Compliance In Progress	213	30	(43)
	TTU	Payroll Security and Processes	400		IT/Controls In Progress	495	50	(145)
	TTU	Research Safety Governance	400		Governance In Progress	12	388	0
	HSC	Time & Effort Reporting Processes	200		Compliance In Progress	113	87	0
	HSC	Department of Ophthalmology EyeDoc Express Application Controls	300	(300)	IT/Controls Cancelled			0
	HSC	Department of Ophthalmology EMR Migration and Implementation Review		300	Management Advisory In Progress	15	285	0
	HSC	Industrial Control Systems Security	350		IT/Controls Complete	333		17
	HSC-EP	Time & Effort Reporting Processes	200		Compliance In Progress	99	101	0
	HSC-EP	Transmountain Campus Bus Business Processes	350		Financial/Controls In Progress	480	40	(170)
	HSC-EP	IT Network Security	400		IT/Controls			400
	ASU	Graduate Studies Tuition	300		Financial/Compliance In Progress	350	10	(60)
	ASU	Grant Administration Processes	400		Operational/Compliance In Progress	217	183	0
		<b>HIGHEST PRIORITY TOTALS</b>	<b>3,960</b>			<b>2,511</b>	<b>1,174</b>	<b>275</b>
		<b>MODERATE PRIORITY</b>						
2	TTUS	Security Camera Policies	450		Management Advisory In Progress	31	419	0
2	TTUS	Office of Institutional Advancement	350		Management Advisory			350
2	TTU	College of Education	350		Financial/Operational In Progress	23	327	0
2	TTU	Intercollegiate Athletics	400		Operational/Compliance			400
2	TTU	CS Gold Application Security	325		IT/Controls In Progress	343	40	(58)
2	HSC	Office of Strategic Initiatives Revenue Cycle Unit	350		Management Advisory			350
2	HSC	GE Centrality Business - Dictionary Change Management	400		IT/Controls Complete	233		167
New	HSC	TAC 202 Information Technology Controls Compliance		400	IT/Controls/Compliance In Progress	113	287	0
2	HSC	Food and Entertainment Expenses	300		Financial In Progress	159	141	0
2	HSC-EP	PLFSOM Department Cash Controls - Pedi	80		Controls In Progress			80

TEXAS TECH UNIVERSITY SYSTEM  
OFFICE OF AUDIT SERVICES  
PRIORITIZED AUDIT PLAN  
Fiscal Year 2019

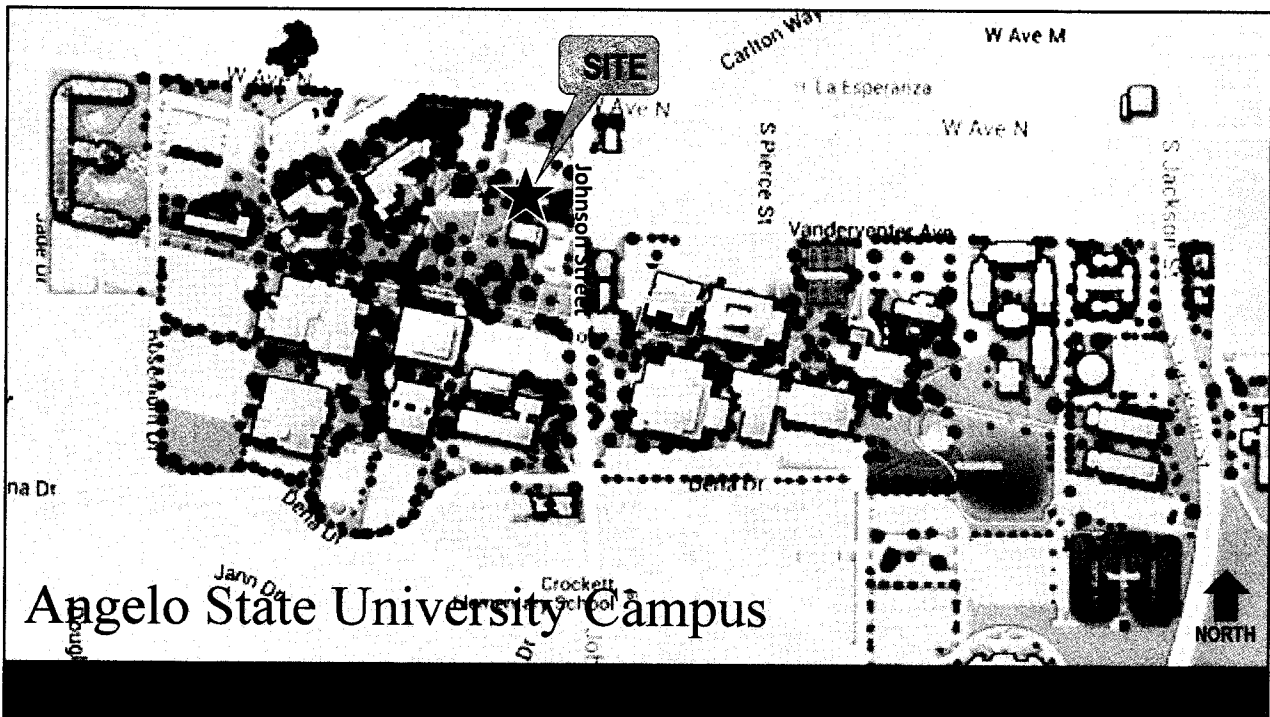
PRIORITY	ENTITY	AUDIT AREA		BUDGETED HOURS	BUDGET ADJUSTMENTS	STATUS AS OF FEB 11	ACTUAL HOURS	TIME STILL NEEDED	BUDGET vs ACTUAL
2	HSC-EP	Amazon Purchases	Financial/Controls	350		Complete	288		62
2	HSC-EP	GE Centricity EMR Application Controls	IT/Controls	350					350
2	HSC-EP	PLFSOM Department of Emergency Medicine	Financial/Controls	400		In Progress	2	398	0
2	ASU	Hispanic Serving Institution (HSI) Grants	Financial/Compliance	200	100	In Progress	55	245	0
2	ASU	Housing and Residential Programs	Financial/Compliance	350					350
<b>MODERATE PRIORITY TOTALS</b>				<b>4,655</b>	<b>500</b>		<b>1,247</b>	<b>1,857</b>	<b>2,051</b>
<b>LOWER PRIORITY</b>									
3	TTUS	IT Risk Assessment Framework	IT/Controls	200		In Progress	17	183	0
3	TTU	School of Music Cash Controls	Controls	100	150	In Progress	249	10	(9)
3	TTU	Costa Rica Campus	Financial	175					(75)
3	TTU	Student Success and Retention	Operational	425					425
3	HSC	School of Medicine – Permian Basin	Operational/Controls	400					400
3	HSC	Garrison Institute	Financial	250		Complete	282		(32)
3	HSC-EP	Library Cash Controls	Controls	80		In Progress	84	15	(19)
3	HSC-EP	Data Loss Prevention Controls	IT/Controls	250	50	Complete	274		24
3	ASU	Chrome River System Post-Implementation Review	IT/Controls	200		In Progress	74	126	0
<b>LOWER PRIORITY TOTALS</b>				<b>2,080</b>	<b>200</b>		<b>980</b>	<b>334</b>	<b>966</b>
<b>CONSTRUCTION PROJECT AUDITS</b>									
EP/CPA	TTUS	TTU Sports Performance Center	RSM US LLP			In Progress			0
EP/CPA	TTUS	TTU Experimental Sciences Building II	CBIZ Risk & Advisory Services			In Progress			0
EP/CPA	TTUS	TTU TCVPA Maedgen Theatre Addition	CBIZ Risk & Advisory Services			In Progress			0
EP/CPA	TTUS	TTU Weeks Hall Renovation	RL Townsend & Associates						0
EP/CPA	TTUS	TTU Womble Basketball Practice Facility	RL Townsend & Associates						0
EP/CPA	TTUS	TTU School of Veterinary Medicine	CBIZ Risk & Advisory Services						0
EP/CPA	TTUS	HSC Education Research & Technology Building	CBIZ Risk & Advisory Services			In Progress			0
EP/CPA	TTUS	HSC Permian Basin Academic Facility	CBIZ Risk & Advisory Services			In Progress			0
EP/CPA	TTUS	HSC-EP Medical Sciences Building II	RSM US LLP			In Progress			0
EP/CPA	TTUS	ASU Centennial Village	RSM US LLP			Complete			0
EP/CPA	TTUS	ASU Museum	CBIZ Risk & Advisory Services						0
<b>CONSTRUCTION PROJECT TOTALS</b>				<b>0</b>	<b>-</b>		<b>-</b>	<b>-</b>	<b>0</b>
<b>OTHER VALUE-ADDED WORK</b>									
<b>Total Hours Budgeted for Other Value-Added Work</b>				<b>1,550</b>	<b>(955)</b>				<b>595</b>
Other	ALL	Continuous Monitoring Data Analysis				Ongoing	4		
Other	ALL	Fraud Prevention Training				Ongoing	106		
Other	ALL	Cash Handling and Control Environment Training				Ongoing	18		(19)
Other	ALL	New Employee Orientation				Ongoing	17		
Other	ALL	Data Acquisition Methodology				Ongoing	21		
Other	TTUS	Enterprise Application Steering Committee, Council, and Work Group				Ongoing	2		
Other	TTU	Ethics Center Advisory Board				Ongoing			
Other	HSC	President's Executive Council				Ongoing	6		
Other	HSC	Institutional Compliance and ERM Committee				Ongoing	4		
Other	HSC	Billing Compliance Advisory Committee				Ongoing	2		
Other	HSC	Enterprise Risk Management Committee				Ongoing	3		
Other	HSC	Performance Improvement Committee				Ongoing			
Other	HSC-EP	Institutional Compliance Working Committee				Ongoing	3		
Other	HSC-EP	Conflict of Interest Committee				Ongoing	2		
Other	ASU	Process Improvement Team				Ongoing	1		
Other	N/A	Quality Assurance (Peer) Reviews: UNC Chapel Hill, Cal. State Univ. System				Ongoing	1		
Other	N/A	Texas Tech Federal Credit Union Board and Committees				Ongoing	29		
Other	N/A	Professional Organizations (ACUA, TACUA, IIA, TSCPA, ACFE)				Ongoing	546		
Other	ALL	Other Miscellaneous Projects				Ongoing	190		
<b>OTHER VALUE-ADDED WORK TOTALS</b>				<b>1,550</b>	<b>-</b>		<b>955</b>	<b>-</b>	<b>595</b>
<b>TOTAL ENGAGEMENT HOURS</b>				<b>21,000</b>	<b>810</b>		<b>10,260</b>	<b>3,817</b>	<b>7,733</b>
<b>KEY</b>									
	TTUS	Texas Tech University System and/or inclusive of multiple Texas Tech institutions							
	TTUSA	Texas Tech University System Administration							
	TTU	Texas Tech University							
	HSC	Texas Tech University Health Sciences Center							
	ASU	Angelo State University							
	HSC-EP	Texas Tech University Health Sciences Center El Paso							
	N/A	Work that is not attributable to a particular institution or campus							
Required	Audits that are mandated by law, Operating Policies, standards, contracts, etc. Will be performed based on timing of external deadlines.								
Prior Year	Engagements from prior year annual plan that were in progress at August 1. Goal is to complete them early in the year.								
Special	Unplanned special projects and investigations.								
2	Engagements that were deemed most critical per the risk assessment at August 1.								
3	Engagements that were deemed to be moderately critical per the risk assessment at August 1.								
3	Engagements that were deemed least critical per the risk assessment at August 1.								
EP/CPA	Outsourced construction audits performed by independent CPA or consulting firms.								
Other	Other projects, including committee service, class development and instruction, professional organizations, etc.								

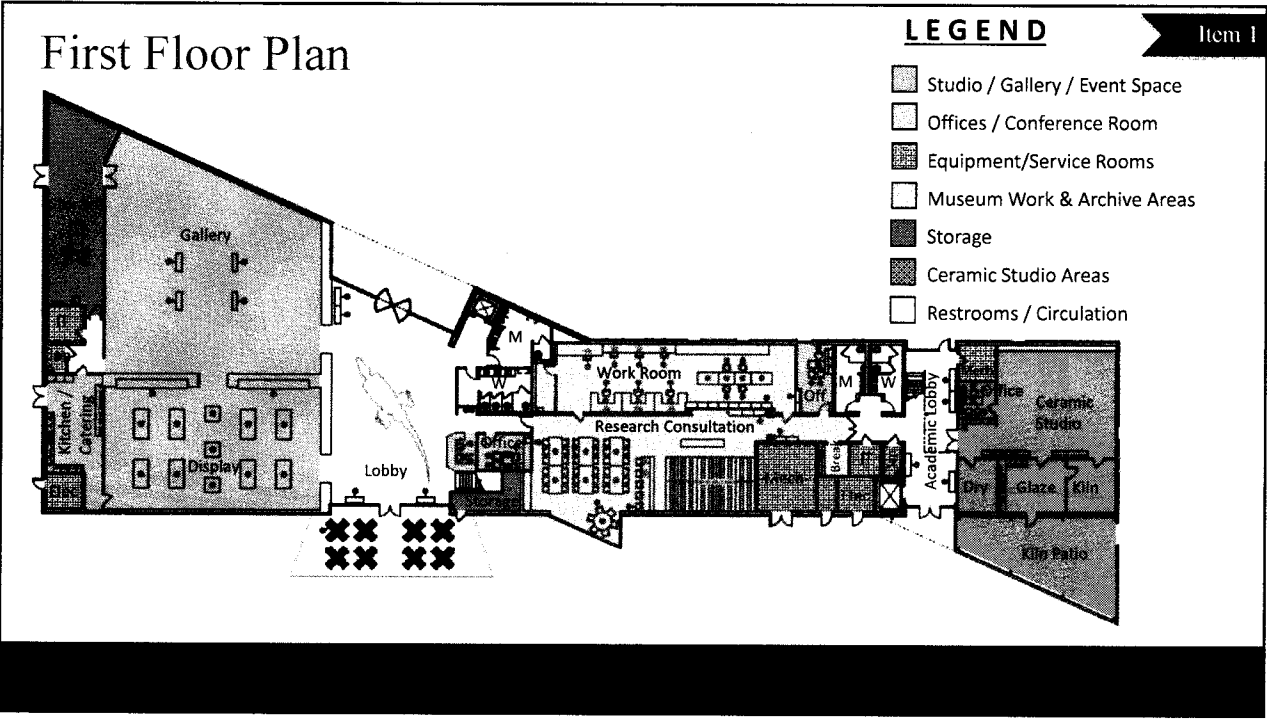
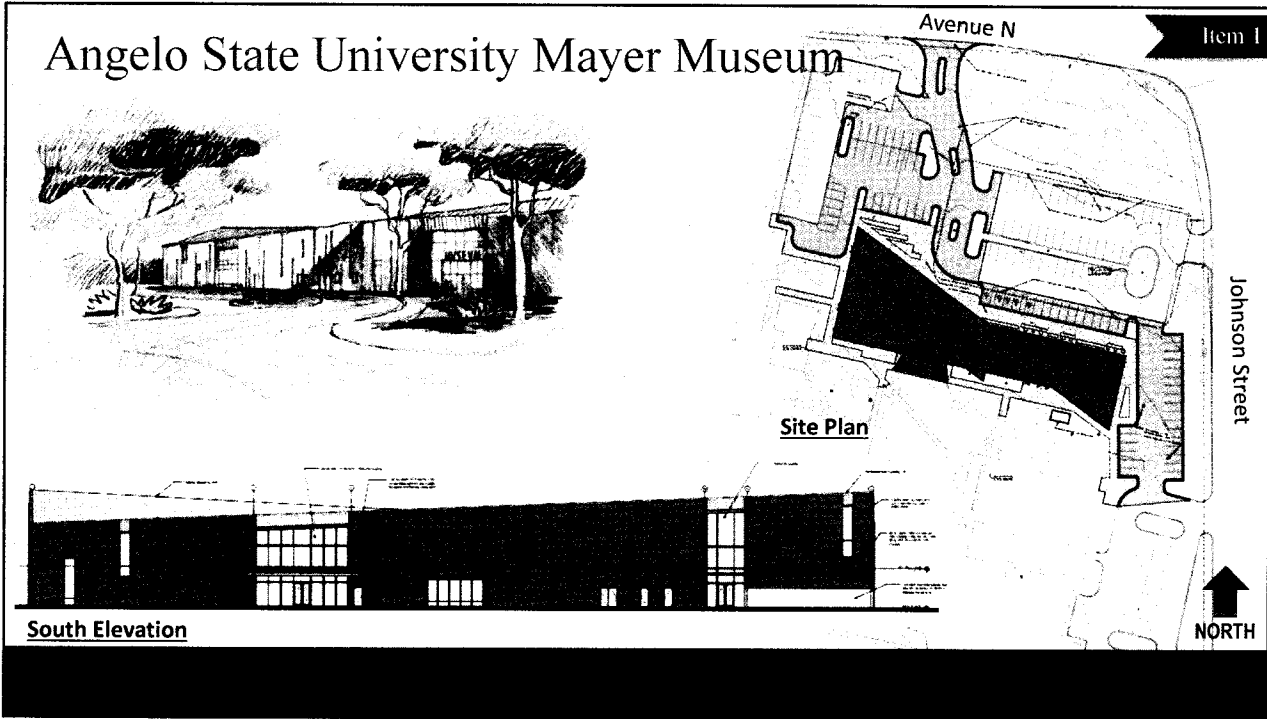
Angelo State University

Item 1

# Authorize expenditures for the Angelo State University Mayer Museum project (DP Stage II)

*Billy Breedlove*



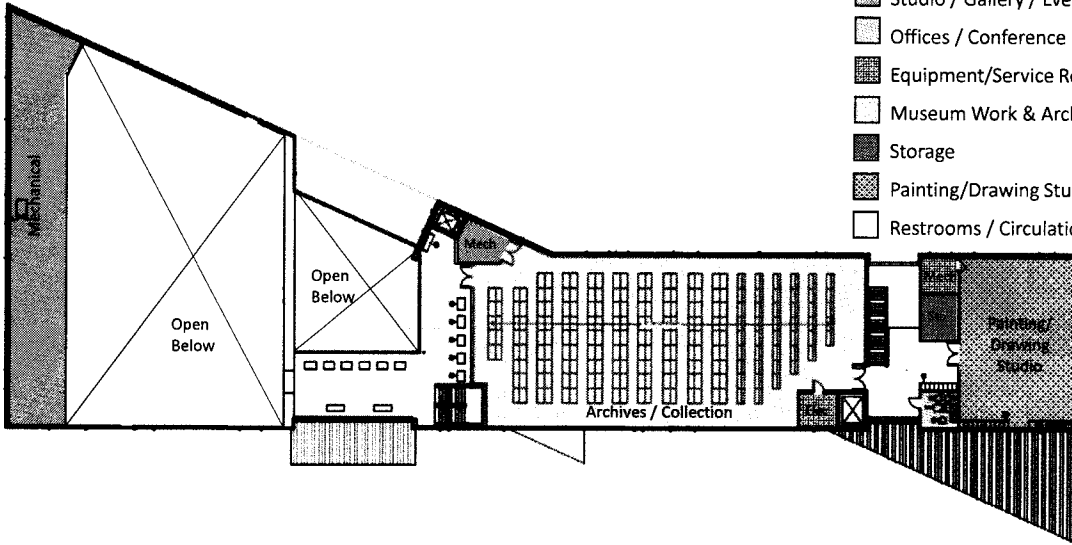


## Second Floor Plan

### LEGEND

Item 1

-  Studio / Gallery / Event Space
-  Offices / Conference Room
-  Equipment/Service Rooms
-  Museum Work & Archive Areas
-  Storage
-  Painting/Drawing Studio
-  Restrooms / Circulation



## Scope of Services

Item 1

- Execute Design Professional Stage II services consisting of:
  - Design Development;
  - Construction Documents;
  - Construction Administration Phases;
  - Provide a Statement of Probable Cost; and
  - Project Schedule.



## Project Overview

Item 1

- Complete the design and contract documents for an approximate 30,948 GSF new art museum building to support the Bachelor of Arts program in Studio Art.
- The building will include:
  - Classrooms, class labs;
  - Student gallery space;
  - Faculty and staff offices; and
  - Support spaces.
  - Specialized laboratories for graphic design and ceramics programs.
- The project will also include analysis of the site utility infrastructure work required, surface parking, landscape enhancements, and public art.

## Project Budget

Item 1

	BOR Approved 3-02-18	Additional Request	Revised Budget
	\$ 425,000	\$ 851,608	\$ 1,276,608
Construction	\$ 0	\$ 0	\$ 0
Professional Services	\$ 372,312	\$ 703,540	\$ 1,075,852
FF&E	\$ 0	\$ 0	\$ 0
Administrative Cost	\$ 49,688	\$ 4,812	\$ 54,500
BOR Directed Fees (1% Public Art / 1% Landscape Enhancements / 2.4% FP&C Fee)	\$ 3,000	\$ 29,921	\$ 32,921
Contingency	\$ 0	\$ 113,335	\$ 113,335

## Recommendation

Item 1

- Approve expenditure of \$851,608 for a total of \$1,276,608 for the Angelo State University Mayer Museum project with an anticipated total project budget of \$18,004,400; and authorize Design Professional Stage II services.
- The expenditure will be funded with Gifts (cash).
- The current total of expenditures includes the previously board authorized expenditure from Gifts (\$425,000 cash).

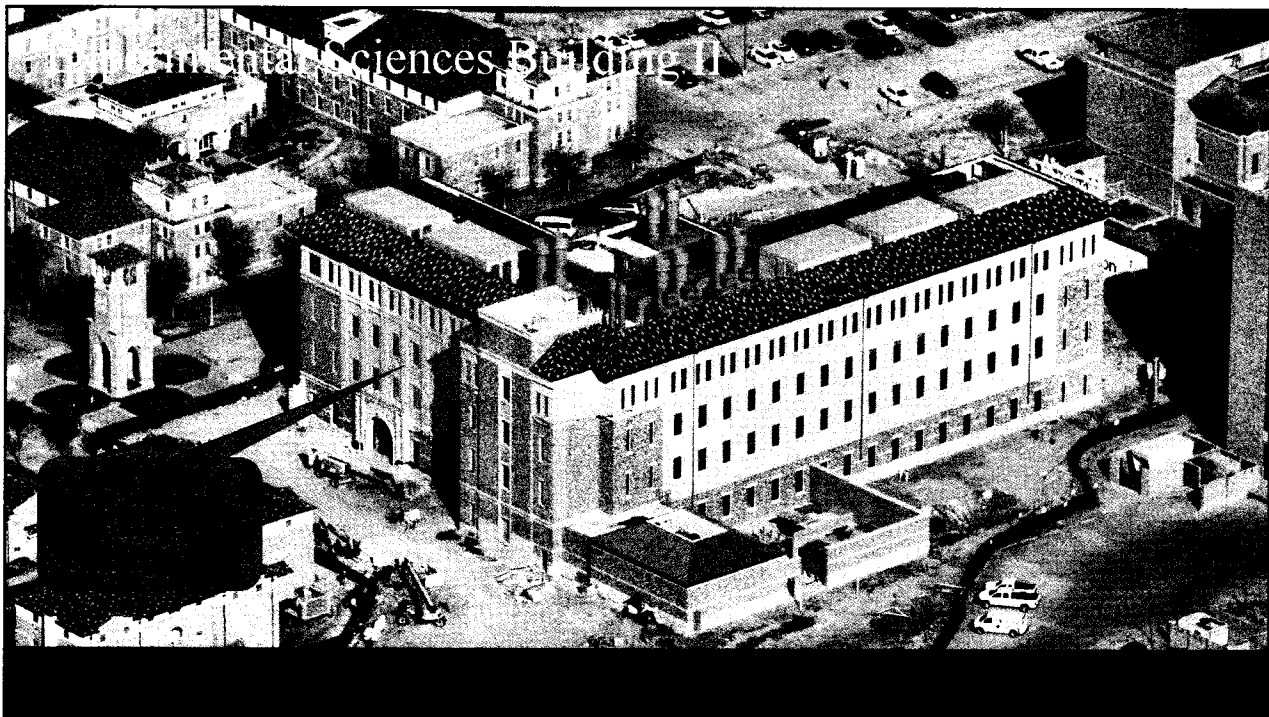


Texas Tech University

Item 2

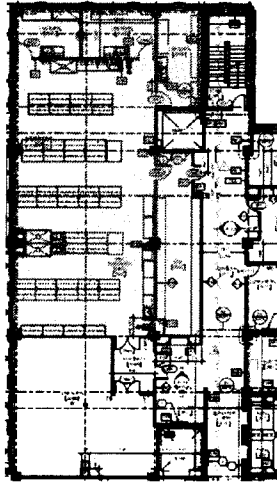
Approve budget increase for the Experimental Sciences Building II (finish-out shell space – final GMP)

*Billy Breedlove*

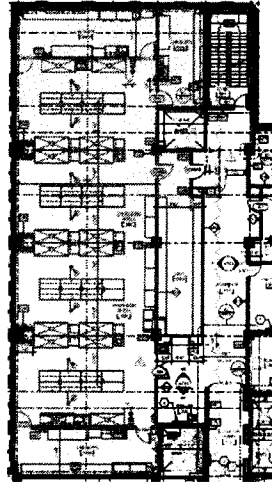


## Floor Plans – Shell Space Finish-Out

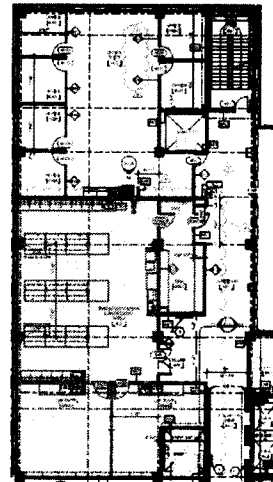
Item 2



Second Floor



Third Floor



Fourth Floor



NORTH

## Scope of Services


Item 2

- Accept the Guaranteed Maximum Price (“GMP”) for construction within the Experimental Sciences Building II (“ESB II”) for the finish-out of a total of 11,350 square feet of shell space, located on the second, third, and fourth floors consisting of:
  - Flexible, modular high-tech interdisciplinary research laboratories;
  - Principal research investigator offices;
  - Staff offices;
  - Core instrumentation facilities; and
  - Support space.

Project Budget			Item 2
	Current Budget	Additional Request	Revised Budget
	\$77,000,000	\$ 2,500,000	\$79,500,000
Construction	\$60,495,000	\$ 3,294,037	\$ 63,789,037
Professional Services	\$ 8,335,204	\$ 415,885	\$ 8,751,089
FF&E	\$ 3,807,530	\$ (1,252,695)	\$ 2,554,835
Administrative Cost	\$ 343,734	\$ (52,219)	\$ 291,515
BOR Directed Fees (1% Public Art / 1% Landscape Enhancements / 2.4% FP&C)	\$ 3,344,688	\$ 145,774	\$ 3,490,462
Contingency	\$ 673,844	\$ (50,782)	\$ 623,062

**Recommendation** Item 2

- Authorize to accept the Guaranteed Maximum Price (“GMP”); increase the budget by \$2,500,000 for the Experimental Sciences Building II (“ESBII”) – Shell Space Finish-Out project; the total project budget will be established at \$79,500,000; report the project change to the Texas Higher Education Coordinating Board; amend the Construction Manager Agent (“CMA”) contract; and amend the Construction Manager at Risk (“CMR”) contract.
- The increase for the finish out of shell space will be funded through the Revenue Finance System (“RFS”) repaid with Institutional or Higher Education Assistance Funds(“HEAF”).



## Recommendation (cont.)

Item 2

- The total project budget includes the previously board authorized \$77,000,000 which is comprised of the RFS funding of the 84<sup>th</sup> Texas Legislature's Regular Session authorization of Tuition Revenue Bond (\$70,000,000) and the balance funded through RFS repaid by HEAF (\$7,000,000).



Texas Tech University

Item 3

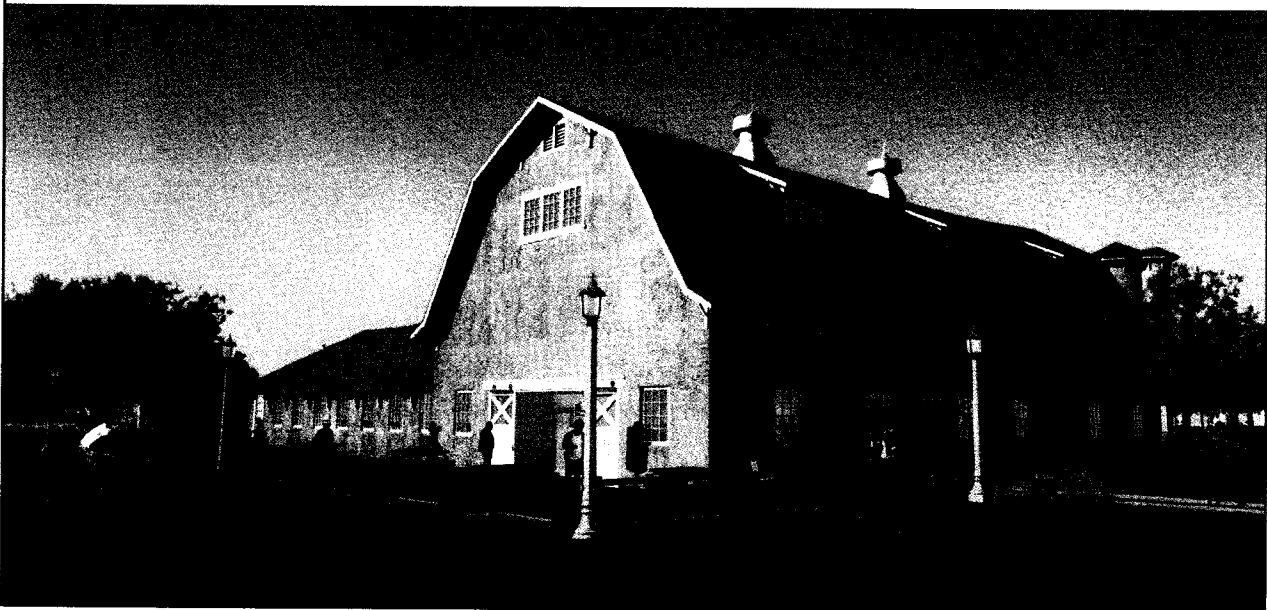
Authorize expenditures for the Dairy Barn Renovation project (DP Stage II and CMR pre-construction services)

*Billy Breedlove*



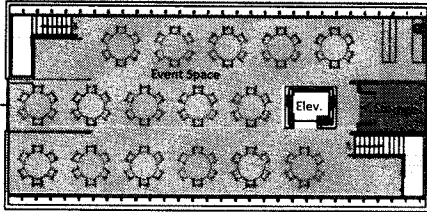
Artist Rendering – East Elevation

Item 3

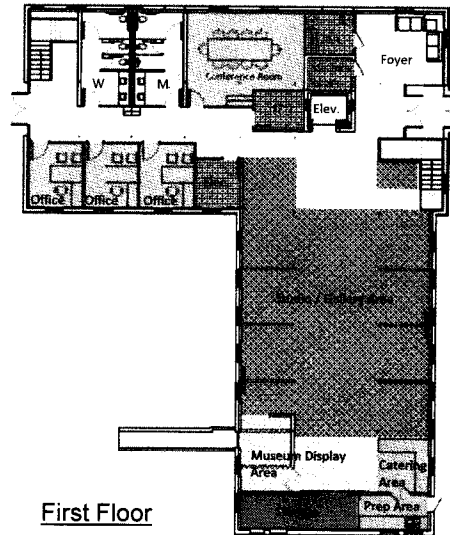


## Floor Plans

Item 3



Second Floor



First Floor



### LEGEND

-  Event / Catering Areas
-  Offices / Conference Room
-  Equipment/Service Rooms
-  Museum Display Area
-  Storage
-  Studio / Gallery Space
-  Restrooms / Circulation

## Scope of Services

Item 3

- Execute Design Professional Stage II services consisting of:
  - Design Development
  - Construction Documents
  - Construction Administration Phases
  - Provide a Statement of Probable Cost; and
  - Project Schedule.



## Scope of Services (cont.)

Item 3

- Execute Construction Manager at Risk Agreement to allow the contractor to provide Pre-construction activities associated with the planning and design process, such as:
  - Project evaluation,
  - Site analysis,
  - Constructability review,
  - Value engineering,
  - Scheduling,
  - Cost control; and
  - Concept budget development.

## Project Overview

Item 3

- Complete design and contract documents for the renovation of the 8,000 GSF historic Dairy Barn structure.
- Renovate and convert the entire structure to support TTU's collaborative learning environment with the creation of:
  - Studio / Gallery spaces;
  - Museum / Display area;
  - Event space with catering support;
  - Offices, conference room, and support spaces.
- Due to original function and date of the facility, the utility infrastructure to accomplish this initiative must be provided, i.e., mechanical, electrical, lighting, plumbing, fire suppression, security, stairs and elevator.

## Project Overview (cont.)

Item 3

- Building exterior requires replacement of roof; renovation of windows; new exterior doors; stucco repair; and painting of soffits and trim - all items shall reflect the historical period.
- Asbestos materials have been previously abated.
- Ingress / egress to be coordinated with newly constructed Library Mall.
- The existing silo is not a part of the renovation project.

## Project Budget

Item 3

	BOR Approved August 2018 \$ 123,650	Additional Request \$ 176,657	Revised Budget \$ 300,307
Construction	\$ 0	\$ 4,708	\$ 4,708
Professional Services	\$ 102,150	\$ 138,250	\$ 240,400
FF&E	\$ 0	\$ 0	\$ 0
Administrative Cost	\$ 21,500	\$ 0	\$ 21,500
BOR Directed Fees (2.4% FP&C)	\$ 0	\$ 7,038	\$ 7,038
Contingency	\$ 0	\$ 26,661	\$ 26,661

## Recommendation

Item 3

- Approve expenditures of \$176,657 for a total of \$300,307 for the Dairy Barn Renovation project with an anticipated total project budget of \$2,600,000; authorize Design Professional Stage II services; and award a Construction Manager at Risk Agreement for pre-construction services.
- The expenditures will be funded through the Revenue Finance System repaid with Gifts for half of the project budget and Institutional Funds and Higher Education Assistance Funds for the other half of the project budget.
- The current total of expenditures includes the previously board authorized expenditures from Gifts (\$123,650 cash).

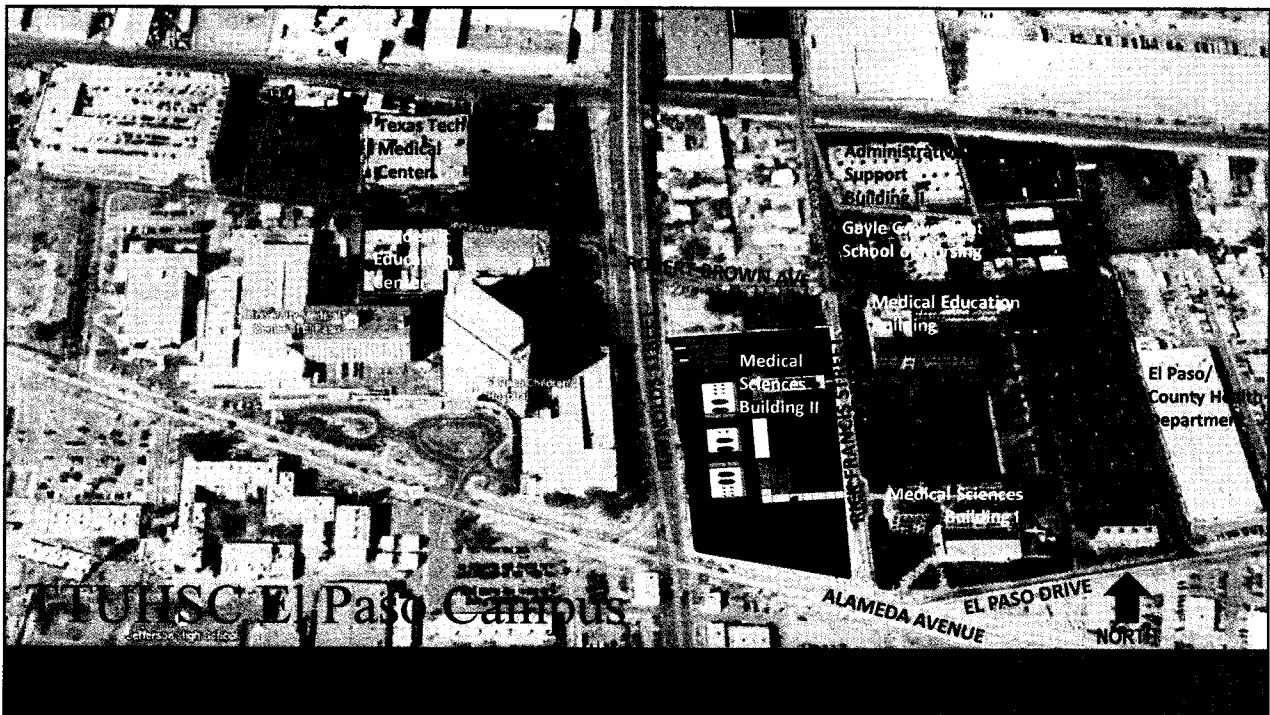


# Texas Tech University Health Sciences Center El Paso

Item 4

## Approve concept and preliminary budget for the Dental Oral Health Clinic in El Paso, TX (DP Stage I)

*Billy Breedlove*



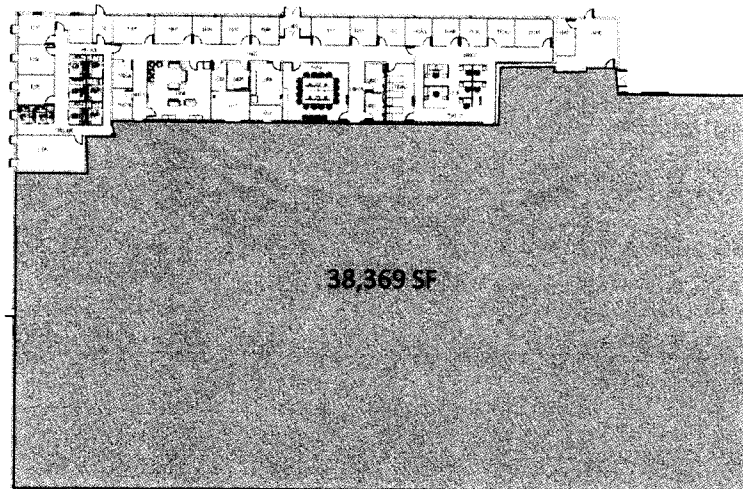
## Administrative Support Building II

Item 4



## Proposed Shell Space Finish-Out

Item 4



Floor Plan



## Scope of Services

Item 4

- Establish a preliminary budget, execute a Design Professional Agreement, and authorize Stage I services in order to move forward on the project's vision through:
  - Programming and Schematic Design phases;
  - Statement of Probably Cost; and
  - Project Schedule.

## Proposed Project Overview

Item 4


- Finish-out 38,369 GSF of shell space within the Administrative Support Building II ("ASBII") consisting of:
  - A dental clinic for 130 operating stations plus support areas;
  - Sterilization area;
  - Central dispensing area(s);
  - Faculty and staff offices with support spaces;
  - Public lobby and waiting areas for adults and children;
  - Public and private restrooms;
  - Custodial spaces; and
  - Expand utilities and building systems to meet programming needs.
  - Dental Clinic equipment to be installed with the intent to be relocated at a later date.

Project Budget		Item 4
	\$	689,473
Construction	\$	0
Professional Services	\$	636,352
FF&E	\$	0
Administrative Costs	\$	4,899
BOR Directed Fees (1% Public Art / 1% Landscape Enhancements / 2.4% FP&C)	\$	16,160
Contingency	\$	32,062

Item 4

## Recommendation

- Authorize to establish a preliminary budget of \$689,473 to provide planning and design services for the Dental Oral Health Clinic project, in El Paso, TX, with an anticipated project budget of \$30,500,000; award the Design Professional Agreement; and authorize Stage I services.
- The preliminary budget will be funded with a combination of TTUHSC El Paso's Institutional Funds and Higher Education Assistance Fund ("HEAF") funds.



# Texas Tech University Health Sciences Center El Paso

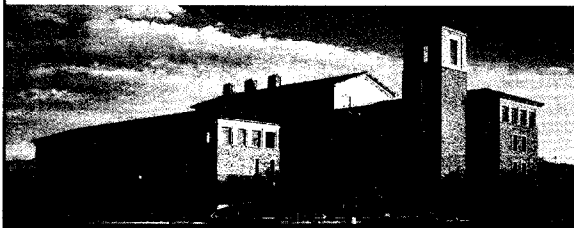
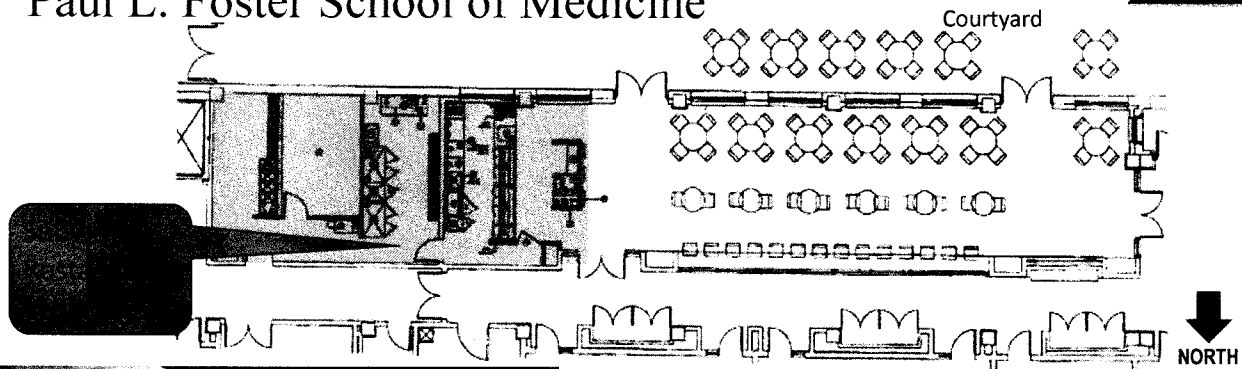
Item 5

Approve amendment to a lease agreement in El Paso  
*Dr. Richard Lange*



# Paul L. Foster School of Medicine

Item 5



Southeast view of Building



## Recommendation

Item 5

- Authorize the president to negotiate and execute an amendment to a lease agreement between Texas Tech University Health Sciences Center at El Paso ("TTUHSC El Paso") and Subway Real Estate Limited Liability Corporation ("Subway") to extend the term for an additional ten years.
- The lease extension will begin July 1, 2019 and remains in effect through June 30, 2029 to include a non-exclusivity clause.



# Texas Tech University System

Item 6

## Report on Facilities Planning and Construction projects (project data as of 02/04/19)

*Billy Breedlove*



# ASU – Food Service Center Renovation

Item 6

**Current Budget:** \$ 8,600,000

**Gross Square Feet:** 27,900 GSF

**Team / Status:**

- Design Professional (DP):  
idGROUP, LLC
- Construction Manager at Risk (CMR):  
Western Builders of Amarillo @ 4%
- Construction Manager Agent (CMA):  
Waived
- Artist:  
Waived

**Substantial Completion Date:**

Original Date – August 2019

Actual Date – TBD



# ASU – Food Service Center Renovation

Item 6

Construction Delivery: CMR

BUDGET	BOR Appr (Planning)	BOR Appr (Full)	Previous Budget <sup>①</sup>	Current Budget <sup>②</sup>	+(-) Change	NOTES
	A	B	C	D	D-C	
	\$ -	\$ 8,600,000	\$ 8,600,000	\$ 8,600,000	\$ -	
<b>CATEGORY</b>						
Professional Services	\$ -	\$ 658,620	\$ 658,620	\$ 658,620	\$ -	
Administrative	\$ -	\$ 5,000	\$ 5,000	\$ -	\$ (5,000)	
Regents' Rules	\$ -	\$ 500	\$ -	\$ -	\$ -	
<b>TOTAL</b>				\$ 8,600,000	\$ -	

**PARTNERS**

General Contractor: Western Builders of Amarillo  
 Design Professional: idGROUP, LLC  
 CM Agent (PM Assist): N/A  
 Tier 2 Auditor: N/A

① e-Builder 12/13/2018

② e-Builder (Project Management Software)

# TTU – Talkington College of Visual & Performing Arts Theatre & Dance Complex

Item 6

**Current Budget:** \$ 23,000,000

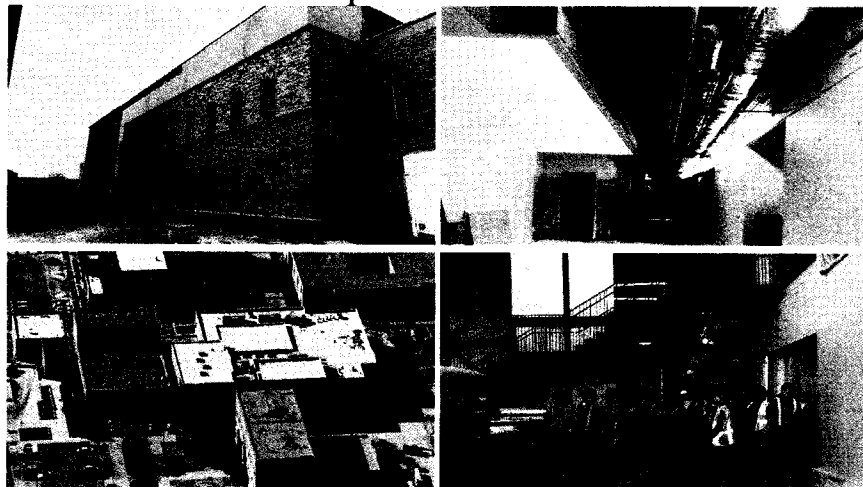
**Gross Square Feet:** 50,728 GSF

**Team / Status:**

- Design Professional: BRW Architects @ 87%
- Construction Manager at Risk (CMR): Teinert Commercial Building Services, Inc. @ 68%
- Construction Manager Agent (CMA): Parkhill, Smith & Cooper, Inc. @ 85%
- Artist: RDG Studio / March 2019 Installation

**Substantial Completion Date:**

Original Date – December 2018  
 Amended Date - March 2019  
 Actual Date – TBD



# TTU – Talkington College of Visual & Performing Arts Theatre & Dance Complex

Item 6

Construction Delivery: CMR

BUDGET	BOR Appr (Planning)	BOR Appr (Full)	Previous Budget <sup>①</sup>	Current Budget <sup>②</sup>	+(-) Change D-C	NOTES
	A	B	C	D		
	\$ -	\$ 23,000,000	\$ 23,000,000	\$ 23,000,000	\$ -	
<b>CATEGORY</b>						
Professional Services	\$ -	\$ 2,737,473	\$ 2,774,099	\$ 2,774,099	\$ -	
Administrative	\$ -	\$ 134,275	\$ 139,011	\$ 139,011	\$ -	
Project Contingency	\$ -	\$ -	\$ -	\$ -	\$ -	
Regents' Rules	\$ -	\$ 999,049	\$ 999,049	\$ 999,049	\$ -	

**PARTNERS**

- General Contractor     Teinert Commercial Building Services, Inc.
- Design Professional     BRW Architects
- CM Agent (PM Assist)     Parkhill, Smith & Cooper, Inc.
- Tier 2 Auditor             CBIZ

- ① e-Builder 11/26/2018
- ② e-Builder (Project Management Software)

# TTU – Experimental Sciences Building II

Item 6

**Current Budget:** \$ 77,000,000

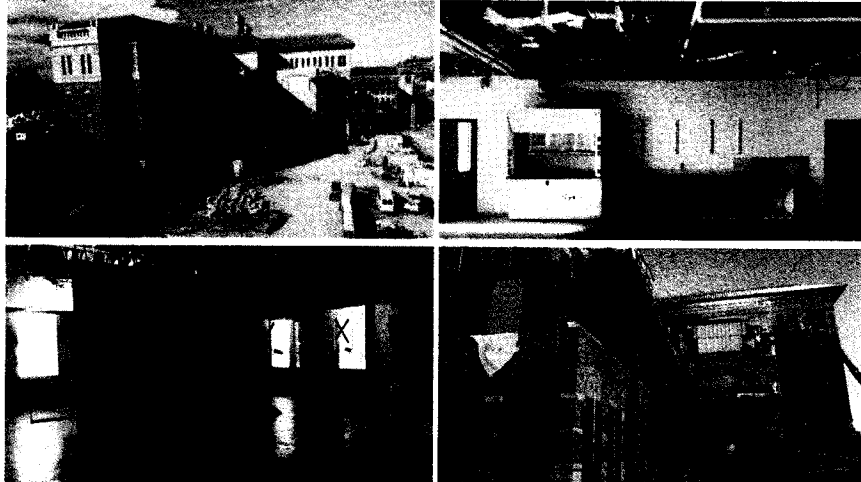
**Gross Square Feet:** 117,800 GSF

**Team / Status:**

- Design Professional:  
TreonorHL @ 91%
- Construction Manager at Risk (CMR):  
Flintco, LLC @ 80%
- Construction Manager Agent (CMA):  
Project Control of Texas, Inc. @ 73%
- Artist:  
Lead Pencil Studio / June 2019 Installation

**Substantial Completion Date:**

Original Date – June 2019  
 Actual Date – TBD



# TTU – Experimental Sciences Building II

Item 6

Construction Delivery: CMR

BUDGET	BOR Appr (Planning)	BOR Appr (Full)	Previous Budget <sup>①</sup>	Current Budget <sup>②</sup>	+(-) Change D-C	NOTES
	A	B	C	D		
	\$ 2,217,364	\$ 77,000,000	\$ 77,000,000	\$ 77,000,000	\$ -	
<b>CATEGORY</b>						
Professional Services	\$ 1,862,310	\$ 7,898,378	\$ 8,143,314	\$ 8,335,204	\$ 191,890	Extend CMA Contract an additional 9 months
Administrative	\$ 104,730	\$ 541,884	\$ 343,734	\$ 343,734	\$ -	
Regents' Rules	\$ 51,969	\$ 3,344,688	\$ 3,344,688	\$ 3,344,688	\$ -	
<b>TOTAL</b>						

**PARTNERS**

General Contractor Flintco, LLC  
 Design Professional TreanorHL  
 CM Agent Project Control of Texas, Inc.  
 Tier 2 Auditor CBIZ

① e-Builder 11/26/2018  
 ② e-Builder (Project Management Software)

# TTU – The Dustin R. Womble Basketball Center

Item 6

**Current Budget:** \$ 29,500,000

**Gross Square Feet:** 58,630 GSF

**Team / Status:**

- Design Professional:  
Populous, Inc. @ 72%
- Construction Manager at Risk (CMR):  
Lee Lewis Construction, Inc. @ 0%
- Construction Manager at Agent (CMA):  
Waived
- Artist:  
RFQ posted on February 11, 2019

**Substantial Completion Date:**

Original Date – June 2020.

Actual Date – TBD



# TTU – The Dustin R. Womble Basketball Center

Item 6

Construction Delivery: CMR

	BOR Appr (Planning)	BOR Appr (Full)	Previous Budget <sup>①</sup>	Current Budget <sup>②</sup>	+(-) Change	NOTES
	A	B	C	D	D-C	
<b>BUDGET</b>	\$ -	\$ 29,500,000	\$ 29,500,000	\$ 29,500,000	\$ -	
<b>CATEGORY</b>						
Construction						
Professional Services	\$ -	\$ 2,395,592	\$ 2,395,592	\$ 2,395,592	\$ -	
Administrative	\$ -	\$ 83,400	\$ 83,400	\$ 83,400	\$ -	
Regents' Rules	\$ -	\$ 1,298,000	\$ 1,298,000	\$ 1,298,000	\$ -	

**PARTNERS**

General Contractor Lee Lewis Construction, Inc.  
 Design Professional Populous, Inc.  
 CM Agent (PM Assist) Waived  
 Tier 2 Auditor Townsend

- ① e-Builder 12/13/2018
- ② e-Builder (Project Management Software)

# TTU – Cash Family Sports Nutrition Center

Item 6

**Current Budget:** \$ 5,560,000

**Gross Square Feet:** 8,988 GSF

**Team / Status:**

- Design Professional:  
MWM Architects @ 79%
- Construction Manager at Risk (CMR):  
Teinert Comm Building Serv, Inc.  
@ 2%
- Construction Manager at Agent (CMA):  
N/A
- Artist:  
Contract Routing

**Substantial Completion Date:**

Original Date – September 2019  
 Actual Date – TBD



# TTU – Cash Family Sports Nutrition Center

Item 6

Construction Delivery: CMR

	BOR Appr (Planning)	BOR Appr (Full)	Previous Budget①	Current Budget②	+(-) Change D-C	NOTES
	A	B	C	D		
<b>BUDGET</b>	\$ -	\$ 5,560,000	\$ 24,500,000	\$ 5,560,000	\$ -	
<b>CATEGORY</b>						
Professional Services	\$ -	\$ 450,266	\$ 450,266	\$ 450,266	\$ -	
Administrative	\$ -	\$ 45,500	\$ 45,500	\$ 45,500	\$ -	
Regents' Rules	\$ -	\$ 111,200	\$ 111,200	\$ 111,200	\$ -	
<b>TOTAL</b>						

**PARTNERS**

General Contractor      Teinert Commercial Building Services, Inc.  
 Design Professional      MWM Architects  
 CM Agent (PM Assist)      N/A  
 Tier 2 Auditor              N/A

- ① e-Builder 12/13/2018
- ② e-Builder (Project Management Software)

# TTU – Lubbock Municipal Auditorium and Coliseum

Item 6

**Current Budget:** \$ 3,500,000

**Gross Square Feet:** 115,500 GSF

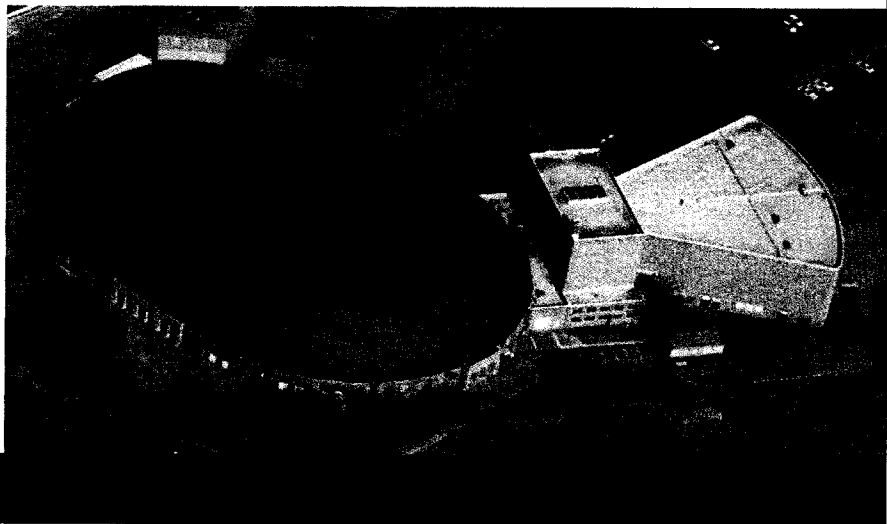
**Team / Status:**

- Design Professional:  
Parkhill Smith and Cooper @ 51%
- Construction Manager at Risk (CMR):  
Teinert Commercial Contractors @ 3%
- Construction Manager Agent (CMA):  
N/A
- Artist:  
Waived

**Substantial Completion Date:**

Original Date – July 2019

Actual Date – TBD



# TTU – Lubbock Municipal Auditorium and Coliseum

Item 6

Construction Delivery: CMR

	BOR Appr (Planning)	BOR Appr (Full)	Previous Budget①	Current Budget②	+(-) Change D-C	NOTES
	A	B	C	D		
<b>BUDGET</b>	\$ -	\$ 3,500,000	\$ 3,500,000	\$ 3,500,000	\$ -	
<b>CATEGORY</b>						
Professional Services	\$ -	\$ 170,563	\$ 170,563	\$ 170,563	\$ -	
Administrative	\$ -	\$ 31,741	\$ 31,741	\$ 31,741	\$ -	
Regents' Rules	\$ -	\$ -	\$ -	\$ -	\$ -	

**PARTNERS**

General Contractor      Teinert Commercial Building Services, Inc.  
 Design Professional      Parkhill, Smith & Cooper, Inc.  
 CM Agent (PM Assist)      N/A  
 Tier 2 Auditor              N/A

- ① e-Builder 12/13/2018
- ② e-Builder (Project Management Software)

# TTU – Weeks Hall Asbestos Abatement and Demolition

Item 6

**Current Budget:** \$ 24,500,000

**Gross Square Feet:** 67,234 GSF

**Team / Status:**

- Design Professional:  
 Dekker/Perich/Sabatini @ 68%
- Construction Manager at Risk (CMR):  
 Lee Lewis Construction, Inc. @ 3%
- Artist:  
 Artist Interviews on March 28, 2019

**Substantial Completion Date:**

Original Date – May 2020

Actual Date – TBD





# TTU – Weeks Hall Asbestos Abatement and Demolition

Item 6

Construction Delivery: CMR

BUDGET	BOR Appr (Planning)	BOR Appr (Full)	Previous Budget <sup>①</sup>	Current Budget <sup>②</sup>	+(-) Change D-C	NOTES
	A	B	C	D		
	\$ -	\$ 24,500,000	\$ 24,500,000	\$ 24,500,000	\$ -	
<b>CATEGORY</b>						
Professional Services	\$ -	\$ 2,381,684	\$ 2,381,684	\$ 2,381,684	\$ -	
Administrative	\$ -	\$ 174,350	\$ 174,350	\$ 174,350	\$ -	
Regents' Rules	\$ -	\$ 1,078,000	\$ 1,078,000	\$ 1,078,000	\$ -	

**PARTNERS**

General Contractor Lee Lewis Construction, Inc.  
 Design Professional Dekker/Perich/Sabatini  
 CM Agent (PM Assist) Waived  
 Tier 2 Auditor Townsend

- ① e-Builder 12/13/2018
- ② e-Builder (Project Management Software)

# TTUHSC – Lubbock Education, Research & Technology + West Expansion

Item 6

**Current Budget** \$ 99,375,000

**Gross Square Feet:** 199,862 GSF

UC 62,258 GSF  
 WE 125,104 GSF  
 AEC 12,500 GSF

**Team / Status:**

- Design Professional:  
Perkins + Will @ 93%
- Construction Manager at Risk (CMR):  
Hill & Wilkinson General Contractors @ 67%
- Construction Manager Agent (CMA):  
Hill International @ 77%
- Artist:  
Interior Art: Adam Frank – March 2019  
Exterior Art: James Surls – March 2019

**Substantial Completion Date:**

Original Date – March 2019  
 Amended Date – June 2019  
 Actual Date – TBD



# TTUHSC – Lubbock Education, Research & Technology + West Expansion

Item 6

Construction Delivery: CMR

BUDGET	BOR Appr (Planning)	BOR Appr (Full)	Previous Budget①	Current Budget②	+ / (-) Change D-C	NOTES
	9/2015   ~ 200,000 GSF A	10/2016   183,216 GSF 10/2017   200,052 GSF B	12/2018   199,862 GSF C	2/04/2019   199,862 GSF D		
	\$ 2,403,613	\$ 91,375,000	\$ 99,375,000	\$ 99,375,000		
<b>CATEGORY</b>						
Professional Services	\$ 2,035,360	\$ 9,842,401	\$ 10,142,208	\$ 9,702,208	\$ (440,000)	FFE budget deficit correction transfer from other Professional Services
Administrative	\$ 89,067	\$ 754,030	\$ 1,081,621	\$ 1,081,621	\$ -	
Regents' Rules	\$ 56,335	\$ 3,816,207	\$ 3,687,886	\$ 3,687,886	\$ -	

**PARTNERS**

General Contractor Hill & Wilkinson General Contractors  
 Design Professional Perkins + Will  
 CM Agent Hill International  
 Tier 2 Auditor CBIZ

- ① e-Builder 11/26/2018
- ② e-Builder (Project Management Software)

# TTUHSC – Permian Basin Academic Facility

Item 6

**Current Budget:** \$ 22,300,000

**Gross Square Feet:** 51,000 GSF

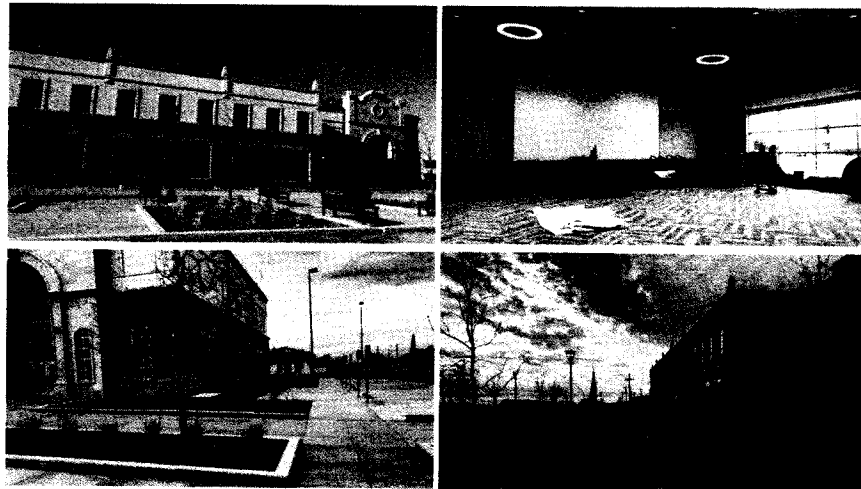
**Team / Status:**

- Design Professional:  
FKP Architects, Inc. @ 79%
- Construction Manager at Risk (CMR):  
Flintco, LLC @ 98.75%
- Construction Manager Agent (CMA):  
Adams Management Services @ 97%
- Artist:  
Albert Paley / Installed August 2018

**Substantial Completion Date:**

Original Date – July 2018

Actual Date – TBD



# TTUHSC – Permian Basin Academic Facility

Item 6

Construction Delivery: CMR

BUDGET	BOR Appr (Planning)	BOR Appr (Full)	Previous Budget	Current Budget	+(-) Change D-C	NOTES
	9/2015   54,000 GSF A	8/2016   51,000 GSF B	12/2018   51,000 GSF C	2/04/2019   51,000 GSF D		
	\$ 552,665	\$ 22,300,000	\$ 22,300,000	\$ 22,300,000	\$ -	
<b>CATEGORY</b>						
Professional Services	\$ 459,318	\$ 2,505,559	\$ 2,268,805	\$ 2,334,874	\$ 66,069	Increase CMA contract for add'l time, \$50,000 and reallocate TRB funding, \$16,069
Administrative	\$ 28,347	\$ 123,145	\$ 106,650	\$ 106,722	\$ 72	Reallocate TRB funds
Regents' Rules	\$ 12,953	\$ 969,159	\$ 969,159	\$ 969,157	\$ (2)	Reallocate TRB funds

**PARTNERS**

General Contractor: Flinto, LLC  
 Design Professional: FKP Architects, Inc.  
 CM Agent: Adams Management  
 Tier 2 Auditor: CBIZ

- ① e-Builder 11/26/2018
- ② e-Builder (Project Management Software)

# TTUHSC El Paso - Medical Sciences Building II

Item 6

**Current Budget:** \$ 84,400,000

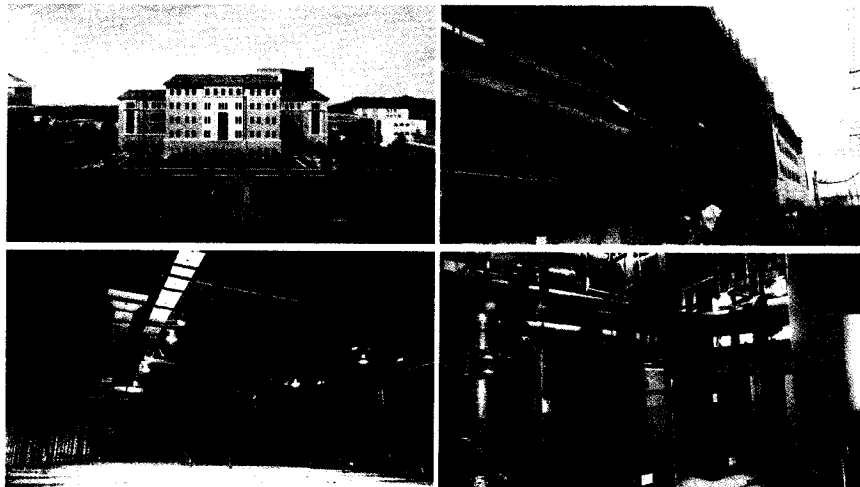
**Gross Square Feet:** 219,900 GSF

**Team / Status:**

- Design Professional:  
Perkins + Will @ 86%
- Construction Manager at Risk (CMR):  
Sundt @ 53%
- Construction Manager Agent (CMA):  
Broaddus and Associates @ 79%
- Artist:  
Thomas Sayre / July 2019 Installation

**Substantial Completion Date:**

Original Date – March 2019  
 Actual Date – TBD



# TTUHSC El Paso - Medical Sciences Building II

Item 6

Construction Delivery: CMR

	BOR Appr (Planning) 9/2015   227,000 GSF	BOR Appr (Full) 12/2016   223,000 GSF	Previous Budget ① 12/2018   219,900 GSF	Current Budget ② 2/04/2019   219,900 GSF	+(-) Change D-C	NOTES
	A	B	C	D		
<b>BUDGET</b>	\$ 2,412,064	\$ 84,400,000	\$ 84,400,000	\$ 85,255,675	\$ 855,675	Shell space finish-out increase approved 12/14/18
<b>CATEGORY</b>						
Professional Services	\$ 2,019,315	\$ 9,749,196	\$ 8,712,855	\$ 8,770,491	\$ 57,636	
Administrative	\$ 109,506	\$ 856,129	\$ 299,362	\$ 299,362	\$ -	
Regents' Rules	\$ 56,533	\$ 3,594,250	\$ 3,594,250	\$ 3,614,305	\$ 20,055	

**PARTNERS**

- General Contractor: Sundt
- Design Professional: Perkins + Will
- CM Agent: Broaddus and Associates
- Tier 2 Auditor: RSM

- ① e-Builder 11/26/2018
- ② e-Builder (Project Management Software)

# TTUHSC El Paso – Dental Learning Center

Item 6

**Current Budget:** \$ 12,518,175

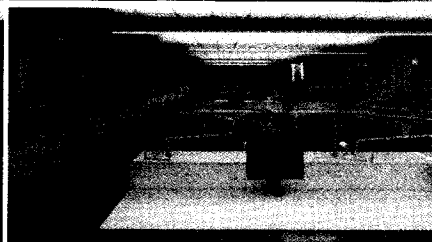
**Gross Square Feet:** 28,831 GSF

**Team / Status:**

- Design Professional:  
Perkins + Will @ 70%
- Construction Manager at Risk (CMR):  
Sundt @ 0%
- Construction Manager Agent (CMA):  
Broaddus and Associates @ 0%
- Artist:  
Waived

**Substantial Completion Date:**  
Original Date – August 2019

Actual Date – TBD



# TTUHSC El Paso - Medical Sciences Building II

Item 6

Construction Delivery: CMR

	BOR Appr (Planning)	BOR Appr (Full)	Previous Budget <sup>①</sup>	Current Budget <sup>②</sup>	+ / (-) Change	NOTES
	A	B	C	D	D-C	
<b>BUDGET</b>	\$ -	\$ 12,518,175	\$ 12,518,175	\$ 12,518,175	\$ -	
<b>CATEGORY</b>						
Professional Services	\$ -	\$ 775,163	\$ 775,163	\$ 767,963	\$ (7,200)	
Administrative	\$ -	\$ 42,604	\$ 42,604	\$ 42,604	\$ -	
Regents' Rules	\$ -	\$ 275,795	\$ 275,795	\$ 282,995	\$ 7,200	Adjust FP&C fee from Professional Services

**PARTNERS**

General Contractor Sundt  
 Design Professional Perkins + Will  
 CM Agent Broaddus and Associates  
 Tier 2 Auditor RSM

① e-Builder 12/13/2018

② e-Builder (Project Management Software)

# TTUSA – Project Assist

Item 6

- USDA Cotton Classing Laboratory
- Frazier Alumni Pavilion Addition
- Texas Tech Federal Credit Union Expansion
- Red Raider Substation
- Veteran Administration Lubbock Community Based Outpatient Clinic
- Lubbock NW Drainage Improvement Project
- Lubbock Playa Lake 52 Drainage Project

## Texas Tech University System

Item 6

### Status of Public Art

## ASU – Archer College of Health & Human Services

Item 6

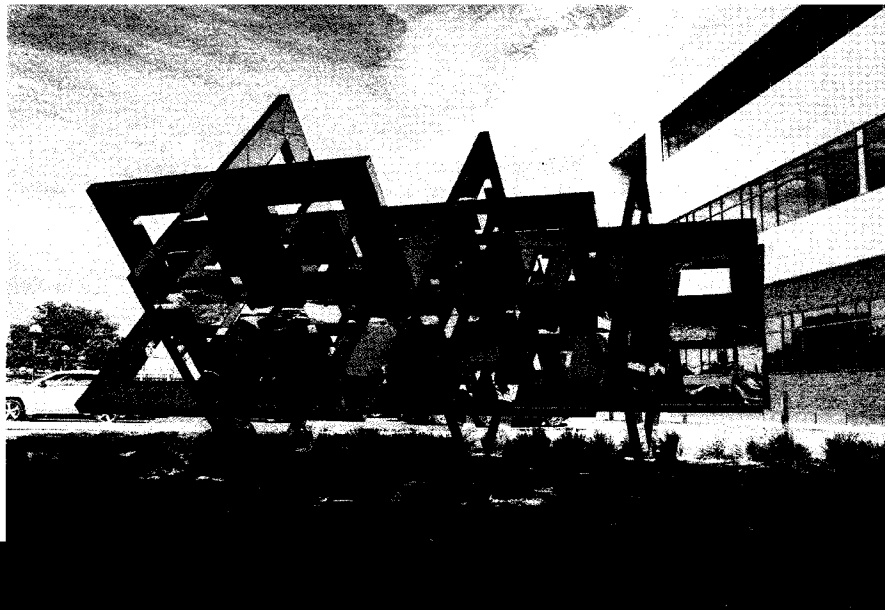
**Art Budget:** \$ 253,000

**Artist:** Owen Morrel  
Miami, FL

**Title:** *Cube-i*

**Status:** Installed November 2018

**Artist Statement:** "Cube-i" will be a mirrored stainless-steel piece that is 24' long, 8' wide, and 11' tall. The artist wants to transform the site through this iconic and interactive sculpture. The strong geometry of the piece mimics the architecture of the Archer College of Health and Human Services building. The cube, a symbol of wholeness or oneness, has specific meaning within the context of this facility promoting and initiating overall wellness and wholeness. Mirrors reflect those who view the sculpture and the surrounding environment, including the building and the nature around it. The sciences heavily influence all the artist's work.



## ASU – Centennial Village II

Item 6

**Art Budget:** \$ 135,000

**Artist:** Frank Swanson  
Sedalia, CO

**Title:** *Confluence*

**Status:** January 2019 Installation

**Artist Statement:** "Confluence" will be composed of two granite sculpture elements and six sculptural benches. The artist wants to enhance the building by creating a unique environment that can be used for seating, as well as present a dynamic sculpture to interact with. The sculpture represents the melding of ideas that are brought together in a university setting. The central pieces of the sculpture, cut from the same block, are separate but interconnecting, representing the circles of conversations and ideas that are swirling amongst the faculty and students. The overall shape also mirrors two ram horns. This piece will be lit at night, allowing viewers to enjoy it any time they visit.



## TTU – New Honors Residence Hall

Item 6

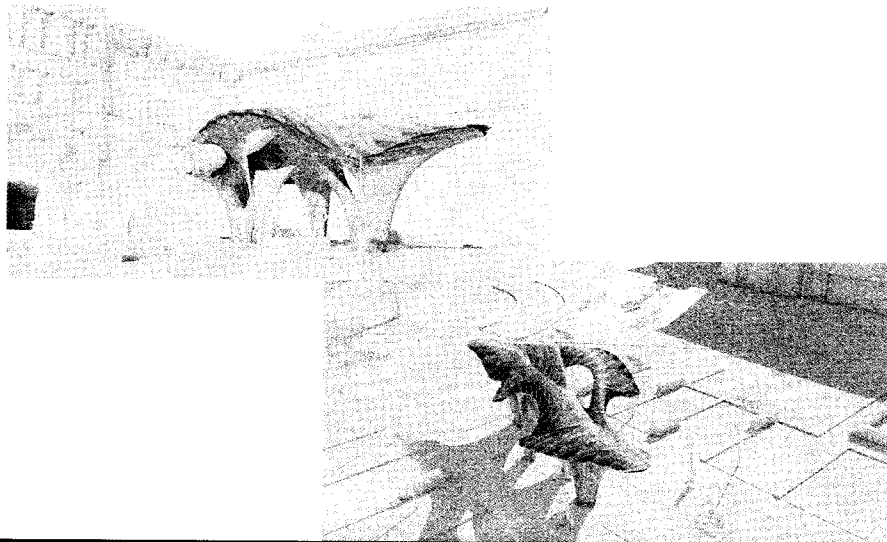
**Art Budget:** \$ 287,000

**Artist:** Marc Fornes / Theverymany  
New York, NY

**Title:** *Wandering*

**Status:** March 2019 Installation

**Artist Statement:** "Wandering" will be a sculptural shade structure that is planned to be between 16 and 18' tall and 50' long. Marc Fornes' work is inspired by public art as an engaging space and a place for social interaction. The artist was inspired by the potential traffic flow patterns in the space to create the initial shape. He also used the Banyan tree as inspiration; although they have a large center trunk (represented by the university), they also drop many roots that flourish (students). The piece will be made of painted aluminum and will have a white and tan ombre color scheme. It will also change in appearance from many angles, including the views from the top floor of the dorm. Unique shapes will be imbedded in the piece, which will cast interesting shadows in the day, as well as when the piece is lit at night.



## TTU – Talkington College of Visual & Performing Arts Theatre & Dance Complex

Item 6

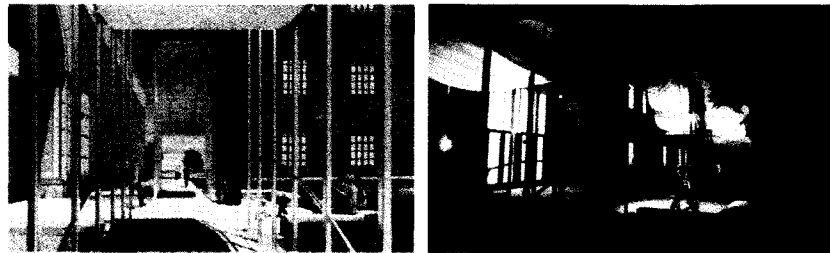
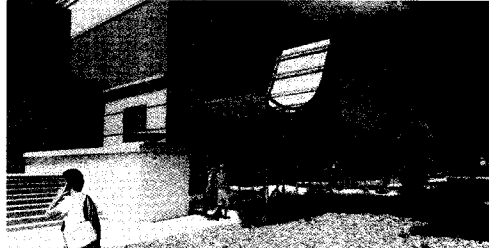
**Art Budget:** \$ 220,000

**Artist:** RDG Studio  
Des Moines, IA

**Title:** *Awaiting Artist Announcement*

**Status:** March 2019 Installation

**Artist Statement:** The proposed design is for a sculptural installation, reminiscent of the proscenium of a theatre stage, that will frame the entryway to the building. The structure will function on many levels, as a pergola or passageway, and suggestive of a gallery or stage left/stage right on either side of the entryway. The structure will create a ceremonial experience of entering the building where, for a moment, everyone is a performer on a stage. Laser-cut panels will suggest the opening of curtains; the overlap in the panels create a sense of movement and the folds of drapery. LED lighting will give the piece a red glow at night.



## TTU – Museum Life Safety Upgrade and Air Management Replacement

Item 6

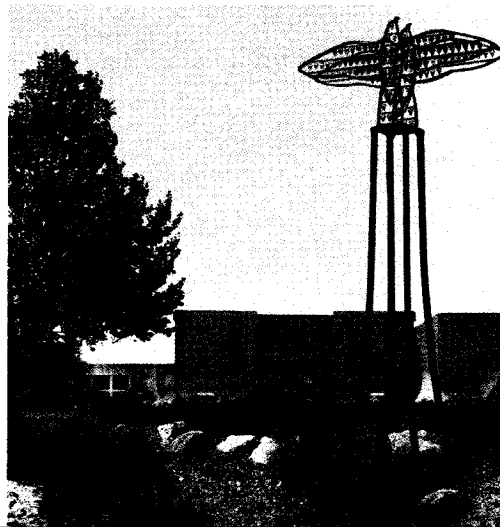
**Art Budget:** \$ 67,000

**Artist:** Peter Mangan  
Blanco, TX

**Title:** *Awaiting Artist Announcement*

**Status:** March 2019 Installation

**Artist Statement:** The selected design is for a 20' tall sculpture made of steel and fused glass. The sculpture represents a red-tailed hawk and will be placed within the ecogarden landscape planned for the Museum's entry; the base of the sculpture was created to mimic the unique shape of the Museum's building. The abstracted bird sculpture has a wingspan of 10', double that of a real red tail hawk, and the colors of the interior fused glass pieces will be like the actual bird's feather coloring. The 136 pieces will also subtly move and shimmer, activated by the Lubbock winds. The piece will be lit at night with LED solar lighting.





## TTU – Experimental Sciences Building II

Item 6

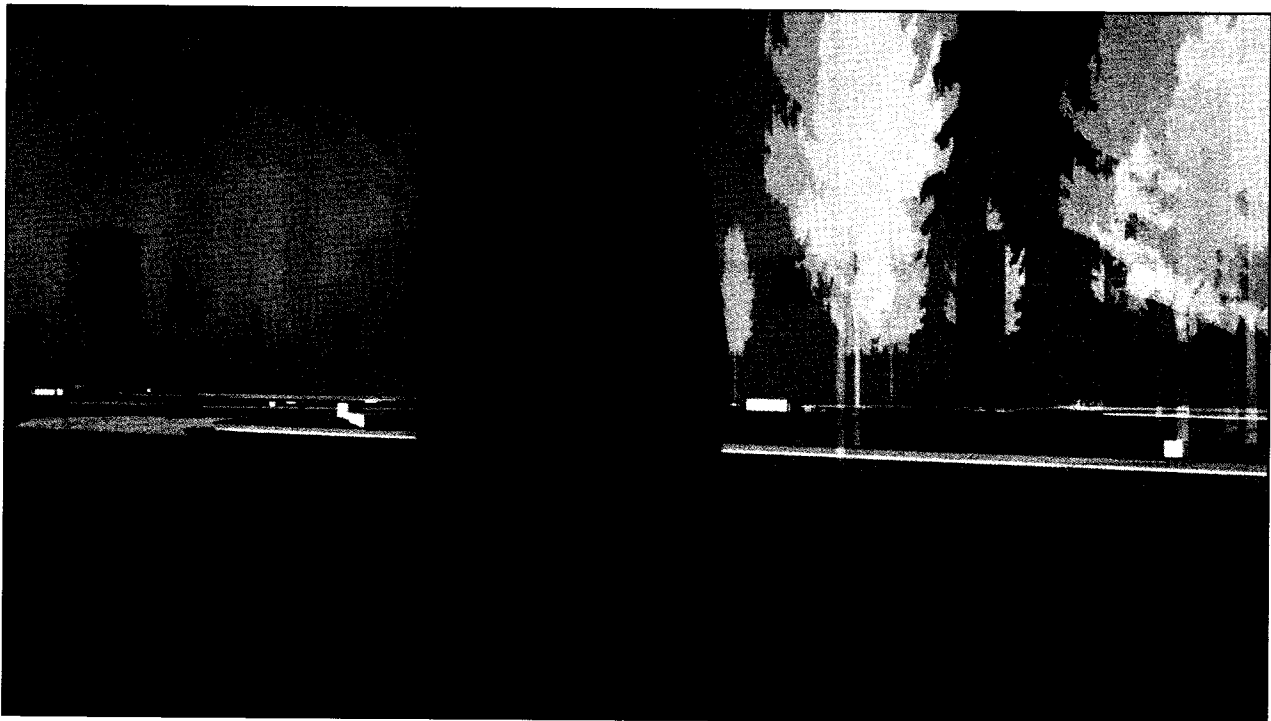
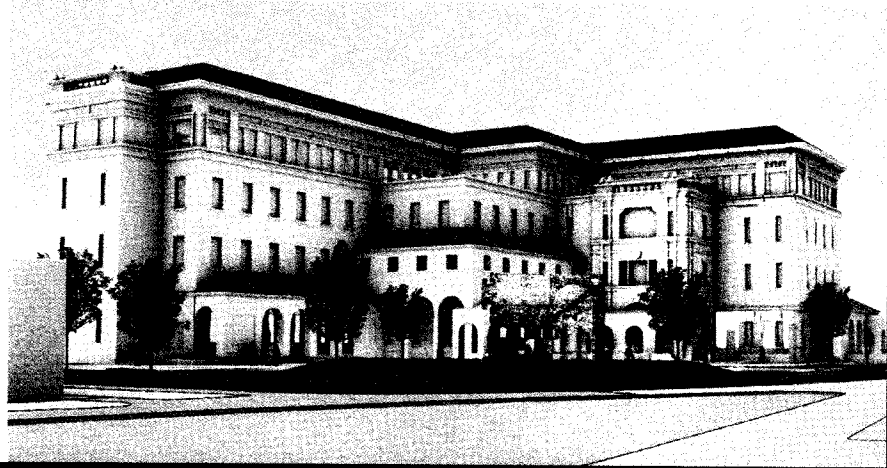
**Art Budget:** \$ 754,000

**Artist:** Lead Pencil Studio  
Seattle, WA

**Title:** *Awaiting Artist Announcement*

**Status:** June 2019 Installation

**Artist Statement:** The proposed design is for a 35' tall by 35' foot long by 7' wide sculptural installation created using cross-welded wire. The sculpture resembles "architecture in reverse" by taking the negative space that we normally don't see and turning it into art, directing viewers to a new way of seeing. Their proposal was inspired by the intertwined relationship between human imagination and rational thinking that takes place in the experimental sciences. The structure will create a sense of place and provoke dialogue by creating indefinite ends rather than asserting conclusions. The artists will work with TTU to create a site-specific work that also engages with the architecture and history of the campus. LED lighting will give the piece a subtle glow at night, while the unique material will create interesting shadows throughout the day.



## TTUHSC – Lubbock Education, Research & Technology + West Expansion Interior

Item 6

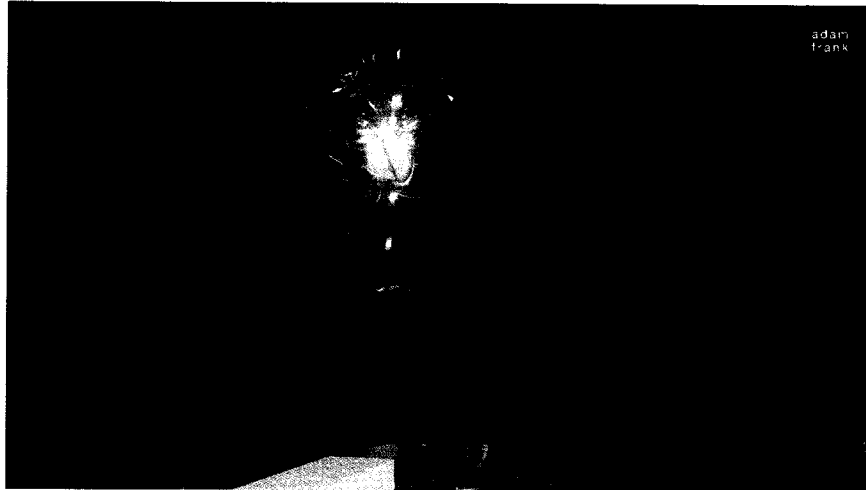
**Art Budget:** \$ 300,000

**Artist:** Adam Frank  
New York, NY

**Title:** *Pulse*

**Status:** March 2019 Installation

**Artist Statement:** The proposed design, tentatively titled *Pulse*, is for an 11-foot-tall, 8-foot-wide LED screen that features an accurate simulation of the human circulatory system in the visual style of an MRI in the lobby of the University Center. As people enter the building, the heartbeat quickens. The more building occupants, the faster the beats and the blood flow. As people leave, the heart begins to slow and eventually settles to an average sleeping rate overnight. Each member of the TTUHSC community help to drive the heartbeat equally. *Pulse* will activate the lobby with an anatomically accurate MRI of the beating heart of the Health Sciences Center. This piece will help set the tone for campus visitors as an innovative and vibrant medical center.



## TTUHSC – Lubbock Education, Research & Technology + West Expansion Exterior

Item 6

**Art Budget:** \$ 530,500

**Artist:** James Surls  
Carbondale, CO

**Title:** *Complete Fragment*

**Status:** March 2019 Installation

**Artist Statement:** The proposed design, titled *Complete Fragment*, is for three bronze and stainless-steel sculptures, one 8'x 9'x 10', another 9.5'x 8'x 11', and the third 11'x 12'x 18' in size. Each sculpture represents the origin of life through the depiction of molecules, as well as growth as represented by flowers. The three separate pieces are meant to create one whole piece, allowing the viewer to stand in the middle of the site and view a sculpture from any angle. Each sculpture has its own life, yet the power is that each is a part of the whole, representative of the connecting tissue of the human endeavor. These sculptures will be part of a landscaped park space where visitors can sit and find calm and healing, a respite from the busy life inside the buildings.



## TTUHSC El Paso - Medical Sciences Building II

Item 6

**Art Budget:** \$ 790,000

**Artist:** Thomas Sayre  
Raleigh, NC

**Title:** *Between Earth and Sky*

**Status:** July 2019 Installation

**Artist Statement:** The public art installation by Thomas Sayre titled *Between Earth and Sky*, will sculpt the almost 15,000 square foot site into one large, sculptural environment, consisting of highly articulated ground plane terrain and an ever-changing array of kinetic wind sculptures hovering above it. The ground plane will be sculpted into a series of 20 earth berms ranging in height from 3 to 4 feet. Slicing through the berms will be a curving pathway bracketed by earthcast walls. Rising out of the terrain will be 23 wind activated sculptures, varying in height from 16-24 feet; each sculpture will have a unique pattern and a hand-blown glass ball that will be lit at night. The artist will work with faculty and researchers on the TTUHSC El Paso campus to determine unique patterns to use in the sculptures.







FACILITIES PLANNING AND CONSTRUCTION  
Capital Project Budget Analysis  
Fiscal Year 2010-2019

Project Name	Contract Type	BUDGET				Actual/Projected Cost (D)	VARIANCE A		VARIANCE B		BOR Adjustment Date	BUDGET ADJUSTMENTS
		Original Budget (Proposed MP1)	Board Approved A	Board Adjustment B	Internal Adjustment		Adjusted Budget C	Actual/Projected less Board Approved (Over/Under) (D-A)	Actual/Projected less Adjusted Budget (Over/Under) (D-C)	% (Over/Under)		
<b>TOTAL - System</b>		27,500,000	\$27,500,000	\$0	\$0	\$27,278,358	-\$221,642	-\$221,642	-1%			
Amador Health Assessment Facility	Construction Mgt @ Risk	\$13,300,000	\$13,300,000	\$0	\$0	\$13,300,000	\$0	\$0	0%			
Labford Ex. Rmch & Technology - West Expansion	Construction Mgt @ Risk	\$15,200,000	\$15,200,000	\$0	\$0	\$15,200,000	\$0	\$0	0%			
<b>TOTAL - HSC</b>		155,408,500	\$155,408,500	\$0	\$0	\$155,408,500	\$0	\$0	0%			
<b>TOTAL - HSC/ET Paso/ASU</b>		1,252,495,024	\$1,252,495,024	\$0	\$0	\$1,252,495,024	\$0	\$0	0%			
Medical Science Building II	Construction Mgt @ Risk	\$41,500,000	\$41,500,000	\$0	\$0	\$41,500,000	\$0	\$0	0%			
Medical Science Building III	Construction Mgt @ Risk	\$11,900,000	\$11,900,000	\$0	\$0	\$11,900,000	\$0	\$0	0%			
<b>TOTAL - ET Paso</b>		111,900,000	\$111,900,000	\$0	\$0	\$111,900,000	\$0	\$0	0%			
<b>TOTAL - HSC/ET Paso/ASU</b>		1,252,495,024	\$1,252,495,024	\$0	\$0	\$1,252,495,024	\$0	\$0	0%			
Corcho Hall	Construction Mgt @ Risk	\$1,150,364,196	\$1,150,364,196	\$0	\$0	\$1,150,364,196	\$0	\$0	0%			
<b>TOTAL - ASU</b>		106,640,000	\$106,640,000	\$0	\$0	\$106,640,000	\$0	\$0	0%			
<b>TOTAL - HSC/ET Paso/ASU</b>		1,252,495,024	\$1,252,495,024	\$0	\$0	\$1,252,495,024	\$0	\$0	0%			

Verifies based on initial full project funding  
Project Status:  
In Construction  
Construction Mgt @ Risk

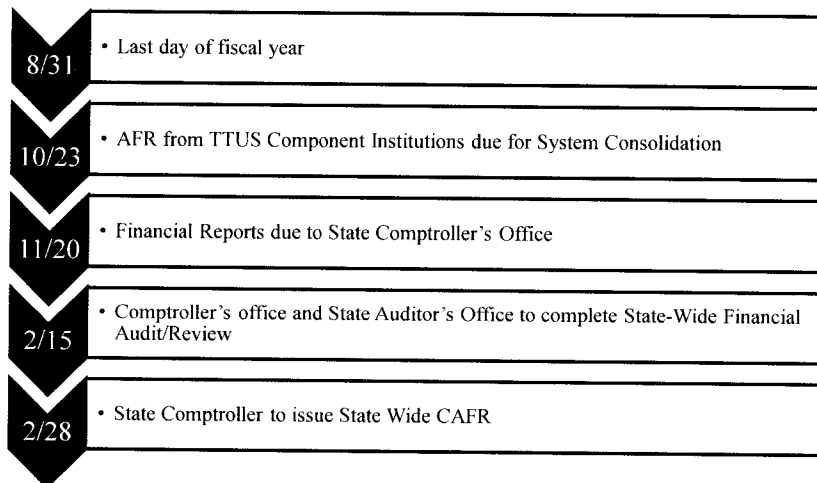


TEXAS TECH UNIVERSITY SYSTEM

*Review of the*  
**FY 2018 Texas Tech University System  
Combined Annual Financial Report**

Gary Barnes, *TTUS Vice Chancellor and CFO*  
February 21, 2019

**Texas Tech University System  
Timeline for Combined Annual Financial Reporting**

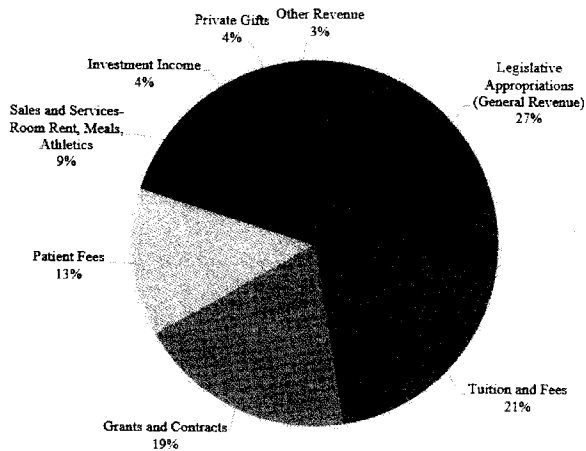


## Revenues, Expenses and Changes in Net Position



as of August 31 (in thousands)					
	2014	2015	2016	2017	2018
<b>Beginning Net Position</b>	\$ 2,603,698	\$ 2,685,809	\$ 2,732,250	\$ 2,924,055	\$ 2,833,287
<b>Revenues</b>					
Tuition and Fees	348,344	380,658	404,505	413,531	429,179
Patient Fees	244,555	254,662	262,154	260,173	273,361
Sales and Services-Room Rent, Meals, Athletics	162,286	181,365	185,717	191,103	194,800
Grants and Contracts	347,152	346,389	400,650	397,159	400,522
Other Revenue	31,841	23,202	49,780	56,421	52,567
Legislative Appropriations (General Revenue)	466,857	468,174	515,430	541,934	554,682
Private Gifts	95,216	83,318	123,267	92,203	88,246
Investment Income	113,740	56,594	80,557	117,710	82,715
<b>TOTAL REVENUE</b>	<b>1,809,991</b>	<b>1,794,362</b>	<b>2,022,060</b>	<b>2,070,234</b>	<b>2,076,072</b>
<b>Expenses</b>					
Salaries, Wages & Benefits	996,509	1,049,394	1,105,158	1,184,505	1,149,009
Professional Fees and Services	64,091	64,588	76,200	80,018	79,680
Travel	31,104	31,396	33,651	33,796	35,146
Materials and Supplies	85,731	90,832	91,457	93,380	90,384
Utilities, Rentals & Leases	62,747	65,952	69,172	75,182	77,120
Repairs & Maintenance	37,706	38,556	38,473	39,357	43,273
Interest Expense on Capital Assets, Depreciation	148,142	154,915	142,400	145,044	149,957
Scholarships	65,817	69,515	77,794	83,208	83,698
Other Operating Expenses	116,649	129,511	170,150	141,139	151,467
<b>TOTAL EXPENSES</b>	<b>1,608,496</b>	<b>1,694,659</b>	<b>1,804,455</b>	<b>1,875,629</b>	<b>1,859,734</b>
<b>Other</b>					
Increase (Decrease) in Fair Mkt Value of Inv	47,998	(59,284)	(26,711)	65,927	40,631
Prior Period Adjustment(s)	(167,382)	(53)	911	(351,300)	-
<b>Ending Net Position</b>	<b>\$ 2,685,809</b>	<b>\$ 2,726,175</b>	<b>\$ 2,924,055</b>	<b>\$ 2,833,287</b>	<b>\$ 3,090,256</b>

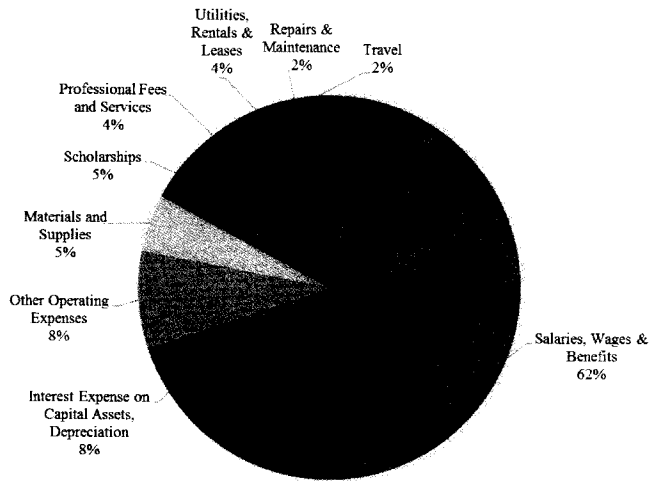
## Sources of Revenue, FY 2018



Revenues (in thousands)	FY 2018	
Legislative Appropriations (General Revenue, HEF, TRB)	554,682	27%
Tuition and Fees	429,179	21%
Grants and Contracts	400,522	19%
Patient Fees	273,361	13%
Sales and Services-Room Rent, Meals, Athletics	194,800	9%
Investment Income	82,715	4%
Private Gifts	88,246	4%
Other Revenue	52,567	3%
<b>TOTAL REVENUE</b>	<b>2,076,072</b>	

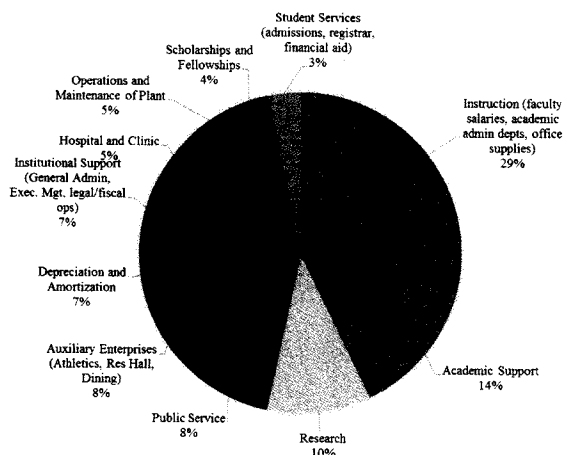


## Total Expenses, FY 2018



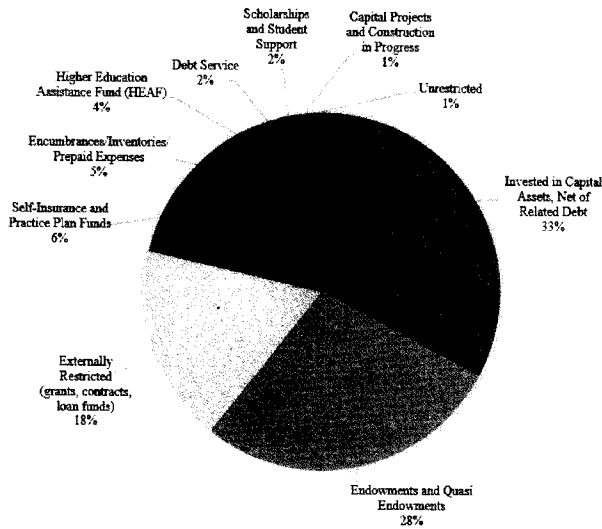
Expenses (in thousands)	FY 2018	
Salaries, Wages & Benefits	1,149,009	62%
Interest Expense on Capital Assets, Depreciation	149,957	8%
Other Operating Expenses	151,467	8%
Materials and Supplies	90,384	5%
Scholarships	83,698	5%
Professional Fees and Services	79,680	4%
Utilities, Rentals & Leases	77,120	4%
Repairs & Maintenance	43,273	2%
Travel	35,146	2%
<b>TOTAL EXPENSES</b>	<b>1,859,734</b>	

## Operating Expenses by NACUBO Function, FY 2018



Operating Expenses by NACUBO Function (in thousands)	FY 2018	
Instruction (faculty salaries, academic admin depts, office supplies)	527,480	29%
Academic Support (libraries, academic computing, central academic admin)	258,021	14%
Research	192,291	10%
Public Service	147,113	8%
Auxiliary Enterprises (Athletics, Res Hall, Dining)	149,679	8%
Depreciation and Amortization	126,559	7%
Institutional Support (General Admin, Exec. Mgt, legal/fiscal ops)	120,692	7%
Hospital and Clinic	91,550	5%
Operations and Maintenance of Plant	91,737	5%
Scholarships and Fellowships	68,552	4%
Student Services (admissions, registrar, financial aid)	62,663	3%
<b>TOTAL OPERATING EXPENSES</b>	<b>1,836,337</b>	

# Net Position, FY 2018



Net Position (in thousands)	FY 2018	
Invested in Capital Assets, Net of Related Debt <i>(buildings, land, equipment)</i>	1,011,251	33%
Endowments and Quasi Endowments	863,106	28%
Externally Restricted <i>(grants, contracts, loan funds)</i>	554,638	18%
Self-Insurance and Practice Plan Funds	197,554	6%
Encumbrances/Inventories/Prepaid Expenses	152,294	5%
Higher Education Assistance Fund (HEAF)	119,207	4%
Debt Service	68,541	2%
Scholarships and Student Support	48,089	2%
Capital Projects and Construction in Progress	44,788	1%
Unrestricted	30,788	1%
<b>TOTAL NET POSITION</b>	<b>3,090,256</b>	

# TTUS Credit Profile

## Analysis of FY 2015 - FY 2018\* Ratios for TTUS



MOODY'S		FY 2015	FY 2016	FY 2017	FY 2018
Operating Revenue (\$MM)	15%	1,704	1,882	1,894	1,896
Annual Change in Operating Revenues (%)	5%	5.5%	9.1%	0.6%	1.6%
Operating Cash Flow Margin (%)	10%	14.7%	16.9%	13.4%	14.1%
Max Single Revenue Contribution (%)	15%	31%	30%	30%	31%
Total Cash & Investments (\$MM)	10%	2,071	2,189	2,414	2,540
Spendable C&I to Operation Expense (x)	10%	0.9x	0.9x	1.0x	1.0x
Spendable Cash & Investments to Total Debt (x)	10%	2.3x	2.5x	2.0x	2.2x
Total Debt-to-Cash Flow (x)	10%	2.5x	1.9x	3.4x	3.0x

\*Estimate based on FY18 CAFR.

# TTUS Credit Profile

## Peer Comparisons, FY 2018\*



MOODY'S



	Texas A&M University System	Texas State University System	Texas Tech University System	University of North Texas System	University of Texas System	University of Houston System
<b>RATINGS (Moody's, S&amp;P, Fitch)</b>	<b>Aaa/AAA/AAA</b>	<b>Aa2/NR/AA</b>	<b>Aa1/AA+/AA+</b>	<b>Aa2/NR/AA</b>	<b>Aaa/AAA/AAA</b>	<b>Aa2/AA/NR</b>
Operating Revenue (\$MM)	4,381	1,265	1,896	908	18,542	1,293
RANKING:	2	5	3	6	1	4
Operating Cash Flow Margin (%)	13.4%	17.2%	14.1%	12.4%	15.9%	14.2%
RANKING:	5	1	4	6	2	3
Max Single Revenue Contribution (%)	33%	54.9%	31.4%	46.5%	41%	54.4%
RANKING:	2	6	1	4	3	5
Spendable Cash & Investments to Operating (x)	1.6	0.7	1.0	0.6	1.3	0.9
RANKING:	1	5	3	6	2	4
Spendable Cash & Investments to Total Debt (x)	1.8	0.8	2.2	0.7	1.9	0.8
RANKING:	3	4 (tied)	1	6	2	4 (tied)
Total Debt-to-Cash Flow (x)	7.0	5.1	3.0	6.5	4.2	7.0
RANKING:	5 (tied)	3	1	4	2	5 (tied)
<b>AVERAGE RANKING:</b>	<b>3.00</b>	<b>4.00</b>	<b>2.17</b>	<b>5.33</b>	<b>2</b>	<b>4.17</b>
	<b>2</b>	<b>4</b>	<b>2</b>	<b>6</b>	<b>1</b>	<b>5</b>

\*TTUS ratios updated based on estimates from FY18 CAFR – peer comparisons shown are based on FY17 data as FY18 figures are not yet available for peer institutions.



TEXAS TECH UNIVERSITY SYSTEM



Texas Tech University System

# Legislative Update

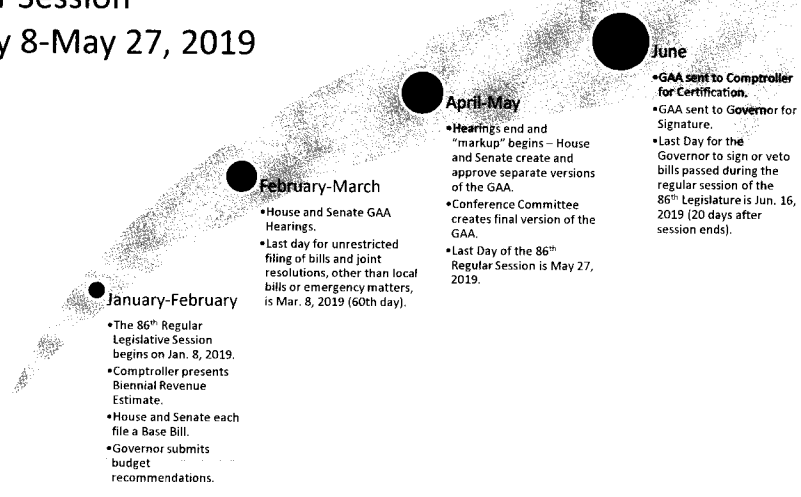
2020-21 Biennium

Tedd L. Mitchell, M.D.  
TTUS Chancellor/TTUHSC President

February 21, 2019



## Texas 86<sup>th</sup> Legislature Regular Session January 8-May 27, 2019









## Texas Economic Outlook and Factors Affecting the State Budget

- As the 10<sup>th</sup> largest economy in the world, the 2020-21 economic forecast for Texas is moderate growth in real Gross State Product<sup>1</sup> at 2%-3% per year.
  - Leading economic factors include agriculture and energy.
  - TTU System is uniquely positioned to provide solutions for the food, fiber, and energy needs of Texas.
- General Revenue-Related funds available for the 2020-21 biennium will be 8.1% more than the previous biennium.
  - Factors that will impact the State Budget include delivering state services to more people (population growth) along with increases in the cost to deliver those services (inflation).

<sup>1</sup> Real Gross State Product is Gross State Product adjusted for inflation.



## Key Issues for the State

- |   |   |   |  |
|---|---|---|--|
|  |  |  |  |
| Public School<br>Finance/Property<br>Tax Relief                                     | School Safety   | Behavioral<br>Health  | Harvey Related   |

## Key Issues for Higher Education

- |   |   |   |   |   |   |   |   |   |
|---|---|---|---|---|---|---|---|---|
|  |  |  |  |  |  |  |  |  |
| Formula<br>Funding  | Non-Formula<br>Support  | Research Funds  | Higher<br>Education Funds   | Higher<br>Education<br>Group<br>Insurance   | TEXAS Grant<br>Program  | Graduate<br>Medical<br>Expansion<br>Grants  | Hazlewood<br>Exemptions   | Texas Mental<br>Health Care<br>Consortium   |



## Summary of Base Bills

In Millions	Current	House Base Bill			Senate Base Bill		
		2018-19 Budget/Estimate	2020-21 Recommendation	Biennial Change	Percentage Change	2020-21 Recommendation	Biennial Change
Total State Budget (All Articles)	\$235,770.2	\$247,227.3	\$11,457.1	4.9%	\$242,867.8	\$7,097.6	3.0%
Higher Education (Art. III)	\$20,736.3	\$21,071.1	\$335.8	1.6%	\$21,078.4	\$342.1	1.6%
TTU System (All Components)	\$953.1	\$1,003.8	\$50.7	5.3%	\$968.9	\$15.8	1.7%

5



## Summary of TTU System

In Millions	Current	House Base Bill			Senate Base Bill		
		2018-19 Budget/Estimate	2020-21 Recommendation	Biennial Change	Percentage Change	2020-21 Recommendation	Biennial Change
Texas Tech University	\$435.6	\$447.1	\$11.5	2.6%	\$432.6	(\$3.0)	(0.7%)
Angelo State University	\$80.0	\$81.5	\$1.5	1.8%	\$81.1	\$1.1	1.3%
TTU System	\$2.7	\$2.7	\$0.0	0.0%	\$2.7	\$0.0	0.0%
<b>Total General Academics and System Office</b>	<b>\$518.4</b>	<b>\$531.3</b>	<b>\$12.9</b>	<b>2.5%</b>	<b>\$516.4</b>	<b>(\$1.9)</b>	<b>(0.4%)</b>
TTU Health Sciences Center	\$292.7	\$321.5	\$28.8	9.8%	\$301.5	\$8.8	3.0%
TTU Health Sciences Center El Paso	\$142.0	\$150.9	\$8.9	6.3%	\$150.9	\$8.9	6.3%
<b>Total Health-Related</b>	<b>\$434.7</b>	<b>\$472.5</b>	<b>\$37.7</b>	<b>8.7%</b>	<b>\$452.5</b>	<b>\$17.7</b>	<b>4.1%</b>
<b>Grand Total TTUS</b>	<b>\$953.1</b>	<b>\$1,003.8</b>	<b>\$50.7</b>	<b>5.3%</b>	<b>\$968.9</b>	<b>\$15.8</b>	<b>1.7%</b>

6



## Exceptional Item Requests

Requests to fund new programs or additional funding for current programs.

Program	Component	Requested 2020	Requested 2021	Request Biennial Total 20-21	funded in HB1	funded in SB1
School of Dental Medicine	TTUHSC El Paso	\$10,000,000	\$10,000,000	\$20,000,000	funded with offset to PFSM	no
Veterinary Medicine	TTU	\$5,414,866	\$7,764,866	\$13,179,732	fully funded	funded at 2018-19 levels
Texas Tech Mental Health Institute	TTUHSC	\$1,250,000	\$1,250,000	\$2,500,000	no	no
Academic and Student Success	TTU	\$4,809,408	\$4,809,408	\$9,618,816	no	no
Academic and Student Support	ASU	\$2,500,000	\$2,500,000	\$5,000,000	no	no
Tuition Revenue Bond Retirement	One Request by Each Component	\$23,110,795	\$23,110,795	\$46,221,590	no new projects funded	no new projects funded
Additional funding for System Operations	TTUSA	\$632,000	\$632,000	\$1,264,000	funded at 2018-19 levels	Funded at 2018-19 levels

