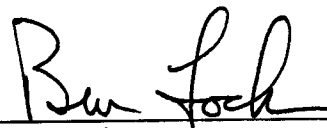


INDEX OF ATTACHMENTS

Attachment 1	ASU Table of Programs
Attachment 2	TTU University Housing Room Rates and Hospitality Services Board Rates
Attachment 3	TTU Honors College: Blueprint for the Future PowerPoint
Attachment 4	TTU Amendment to Ground Lease PowerPoint
Attachment 5	TTU New Rawls College of Business Administration Building PowerPoint
Attachment 6	TTUS Bricks and Mortar Report
Attachment 7	TTUS 2008 Annual Report PowerPoint
Attachment 8	TTUS 2008 Annual Report Risk Coverage
Attachment 9	TTUS Prioritized Audit Plan
Attachment 10	TTUS Office of Audit Services – El Paso Campus PowerPoint
Attachment 11	TTU Office of Institutional Diversity PowerPoint
Attachment 12	TTUS Chancellor's Report
Attachment 13	TTU President's Report
Attachment 14	TTU SGA President's Report
Attachment 15	TTUHSC President's Report
Attachment 16	TTUHSC SGA President's Report
Attachment 17	ASU President's Report
Attachment 18	ASU SGA President's Report

I, Ben Lock, the duly appointed and qualified Secretary of the Board of Regents, hereby certify that the above and foregoing is a true and correct copy of the Minutes of the Texas Tech University System Board of Regents meeting on December 11-12, 2008.


Ben Lock
Secretary

Seal

Table of Programs Angelo State University

CIP Code Name	CIP Code	Assoc	Bacc	Mast	Doct	Prof
Animal/Livestock Husbandry and Production	01.0302.00		X			
Animal Sciences	01.09		X	X		
Environmental Studies	03.0103.00		P			
Environmental Science	03.0104.00		P			
Natural Resources Management and Policy	03.0201.00		X			
Communication Studies/Speech Communication and Rhetoric	09.0101.00		X	X		
Journalism	09.0401.00		X			
COMPUTER AND INFORMATION SCIENCES AND SUPPORT SERVICES	(11)		X	P		
EDUCATION	(13)			X		
German Language and Literature	16.0501.00		X			
French Language and Literature	16.0901.00		X			
Spanish Language and Literature	16.0905.00		X			
ENGLISH LANGUAGE AND LITERATURE/LETTERS	(23)		X	X		
Liberal Arts and Sciences/Liberal Studies	24.0101.00		Pc			
General Studies	24.0102.00		Xc			
Humanities/Humanistic Studies	24.0103.00		Pc			
BIOLOGICAL AND BIOMEDICAL SCIENCES	(26)		X	X		
MATHEMATICS AND STATISTICS	(27)		X	P		
Biological and Physical Sciences	30.0101.00		Pc			
International Studies	30.2001.00		Xc			
Interdisciplinary Studies, General	30.9999.01		Xc	Pc		
Fitness and Sports	31.0501.10		X	X		
Kinesiology and Exercise Science	31.0505.00			P		
PHILOSOPHY AND RELIGIOUS STUDIES	(38)		P			
PHYSICAL SCIENCES	(40)		X			
Applied Physics	40.0899.01			P		
SCIENCE TECHNOLOGIES/TECHNICIANS	(41)		P			
PSYCHOLOGY	(42)		X	X		
SECURITY AND PROTECTIVE SERVICES	(43)		X			
Criminal Justice/Safety Studies	43.0104.00		X			
Public Administration	44.0401.00			X		
Social Work	44.0701.00		P			

SOCIAL SCIENCES	(45)		X	
VISUAL AND PERFORMING ARTS	(50)		X	
Athletic Training/Trainer	51.0913.00		X	
Clinical Laboratory Science/Medical Technology/Technologist	51.1005.00		X	
Nursing	51.16			X
Nursing - Registered Nurse Training (RN, ASN, BSN, MSN)	51.1601.00	X	X	
Physical Therapy/Therapist	51.2308.00			X P
BUSINESS, MANAGEMENT, MARKETING, AND RELATED SUPPORT SERVICES	(52)		X	X
HISTORY	(54)		X	X

X-Degree programs offered. P-Preliminary authority only. No degree programs offered.

Note: Two digit CIP codes in ALL CAPS indicates broad authority. All others are limited.

c Any combinations of currently approved programs in your institution's program inventory.
Last four year cycle review that was approved by the Board: January 2005

(A) UNIVERSITY STUDENT HOUSING ROOM RATES

In accordance with Texas Education Code Section 51.002 and the recommendations of the Residence Halls Association (RHA), University Student Housing, and reviewed by the Vice President for Student Affairs & Enrollment Management; recommend a 2.9% increase in room rates.

<u>Room Rates (9 Month)</u>	<u>*2008-2009</u>	<u>2009-2010</u>
Air Conditioned	\$3,980	\$4,096
Single Room Fee	\$1,000	\$1,000
Gordon Efficiency	\$4,075	\$4,194
Gordon 2 Bedroom	\$4,246	\$4,370
Gordon 1 Bedroom	\$4,522	\$4,654
Carpenter Wells 4 Bedroom	\$4,783	\$4,922
Carpenter Wells 3 Bedroom	\$5,089	\$5,237
Carpenter Wells 2 Bedroom	\$5,698	\$5,864
Carpenter Wells 1 Bedroom	\$6,225	\$6,406
Murray Suites	\$5,161	\$5,311
Room Rates (12 Month)		
Carpenter Wells 4 Bedroom	\$5,386	\$5,543
Carpenter Wells 3 Bedroom	\$5,773	\$5,941
Carpenter Wells 2 Bedroom	\$6,417	\$6,604
Carpenter Wells 1 Bedroom	\$7,011	\$7,215
Murray Suites	\$5,813	\$5,982
Room Rates (Summer per part of term)		
Carpenter Wells 4 Bedroom	\$608	\$626
Carpenter Wells 3 Bedroom	\$633	\$652
Carpenter Wells 2 Bedroom	\$680	\$700
Carpenter Wells 1 Bedroom	\$723	\$744
Murray Suites	\$704	\$725

NOTE: *No increase in room rates for 2008-2009

(B) HOSPITALITY SERVICES BOARD RATES

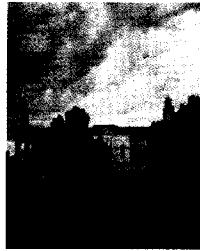
In accordance with Texas Education Code Section 51.002 and the recommendations of the Residence Halls Association (RHA), University Student Housing, and reviewed by the Vice President for Student Affairs & Enrollment Management; recommend a 2.9% increase in board rates.

<u>Board Plans</u>	<u>*Fall 2008 and Spring 2009</u>	<u>Fall 2009 and Spring 2010</u>
Red & Black	\$3,600 (1785 Dining Bucks)	\$3,705 (1845 Dining Bucks)
Diamond	\$3,330 (1525 Dining Bucks)	\$3,427 (1567 Dining Bucks)
Platinum	\$3,155(1340 Dining Bucks)	\$3,247 (1387 Dining Bucks)
Gold	\$2,930 (1115 Dining Bucks)	\$3,015 (1155 Dining Bucks)
Silver	\$2,715 (900 Dining Bucks)	\$2,794 (934 Dining Bucks)

	<u>*Summer Part of Term 2009</u>	<u>Summer Part of Term 2010</u>
Red & Black	\$500 (295 Dining Bucks)	\$515 (303 Dining Bucks)
Diamond	\$460 (255 Dining Bucks)	\$474 (262 Dining Bucks)
Platinum	\$430 (225 Dining Bucks)	\$443 (231 Dining Bucks)
Gold	\$390 (185 Dining Bucks)	\$402 (190 Dining Bucks)
Silver	\$370 (165 Dining Bucks)	\$381 (169 Dining Bucks)

	<u>*Fall/Spring/Summer 2008-2009</u>	<u>Fall/Spring/Summer 2009-2010</u>
	<u>(12-Month Dining Plan Contract)</u>	<u>(12-Month Dining Plan Contract)</u>
Red & Black	\$4,490 (2475 Dining Bucks)	\$3,915 (1845 Dining Bucks)
Diamond	\$4,215 (2200 Dining Bucks)	\$3,637 (1567 Dining Bucks)
Platinum	\$3,965 (1950 Dining Bucks)	\$3,457 (1387 Dining Bucks)
Gold	\$3,700 (1685 Dining Bucks)	\$3,225 (1155 Dining Bucks)
Silver	\$3,430 (1425 Dining Bucks)	\$3,004 (934 Dining Bucks)

NOTE: *No increase in board rates for 2008-2009.



Texas Tech University Honors College: Blueprint for the Future

Dr. Guy Bailey
President

December 11, 2008



Purpose of the Honors College

- To assist in recruiting high-achieving students
- To provide a unique learning experience for those students and a focus of campus excellence
- To emphasize specific intellectual objectives
 - *Broad liberal education*
 - *Global awareness*
 - *Critical and creative thinking skills*
 - *Effective written, verbal, and electronic communication skills*
 - *Intellectual curiosity and life-long learning skills*



Current Composition of the Honors College

- 875 students, down from 1070 students in 2003
- 472 Honors students live on campus (roughly 55%)
- Approximately 80% of Honors students are on scholarships of some sort
- About 15% of Honors students have some sort of study abroad experience



Future Directions – Students and Financial Aid

- Expand the Honors College as a mechanism for recruiting the best students (grow to 1200 students over the next decade)
- Expand scholarship resources for the Honors College
- Expand five-year funding of Honors students, with the 5th year targeted for enrollment in a Texas Tech graduate or professional program
- Expand practice of offering \$1000 scholarships for high school students enrolled in International Baccalaureate programs
- Provide room and board for National Merit finalists
- Provide one-year recruiting scholarships
- Enhance study abroad scholarships



Future Directions – Facilities and Programs

- As new residential facilities are built, build a residential/dining facility, devoted specifically to the Honors College, that is modeled on the colleges at Oxford and Cambridge
- Expand paid undergraduate research opportunities
- Expand study abroad expectations/options
- Expand service learning expectations/options
- Expand first-year Honors experience from one semester to one year
- Explore outdoor learning options
- Make senior thesis mandatory



TEXAS TECH UNIVERSITY



TEXAS TECH UNIVERSITY SYSTEM™

Facilities Committee

TTU

**Approve Amendment to Ground
Lease of Texas Tech University Land**

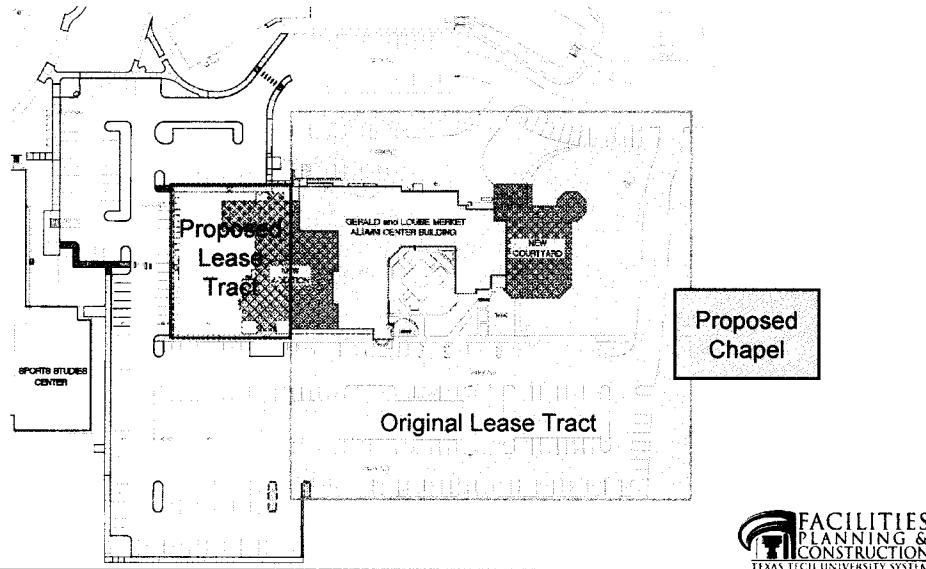


Merket Alumni Center





Proposed Lease Tract



Recommendation

- Authorize the President to Execute an Amendment to the Existing Ground Lease with the Texas Tech Alumni Association for an Additional 0.461 Acres of Land for the Expansion of the Market Alumni Center and to make other adjustments to the lease that may be required for the construction of the University Chapel. The Term of the Lease will run Through August 31, 2043 at no cost.





TEXAS TECH UNIVERSITY SYSTEM™

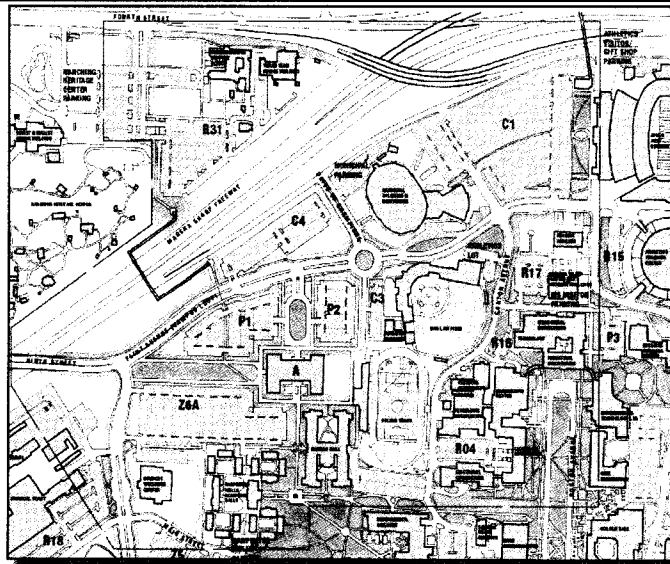
Facilities Committee

TTU

Report on the New Rawls College of Business Administration Building

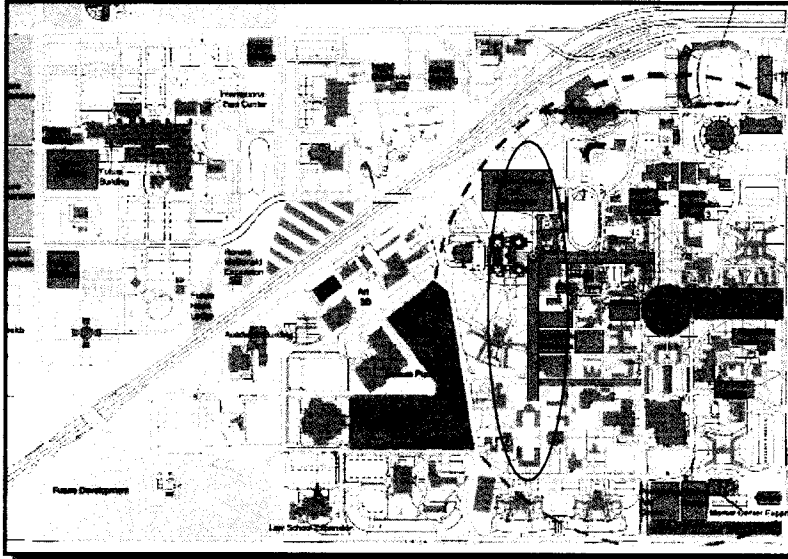


North Campus Gateway Plan Short-Term





Current Land Use Plan



Rawls College of Business Administration

Board of Regents Meeting
December 2008



TEXAS TECH UNIVERSITY
Rawls College of Business

Strategic Goals for the New Rawls College Building

- Signature building that defines the Northwest Gateway—a symbol of the University's future
- Technology based
- Growth:

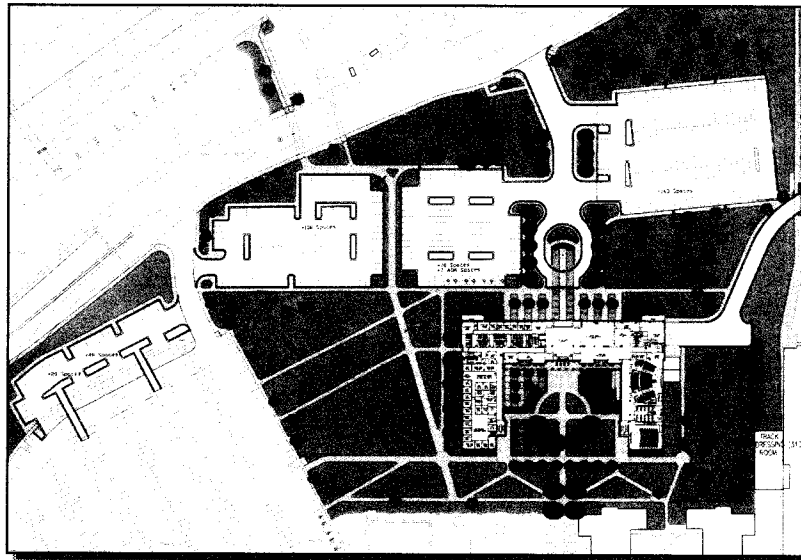
	Now	Future
– Undergraduate	3,600	4,000
– Graduate	600	1,200
- Sustainable building—lower operating costs, expandable format, flexible design
- Impressive spaces—educational mission and core right sized



Academic Goals for the New Rawls College Building

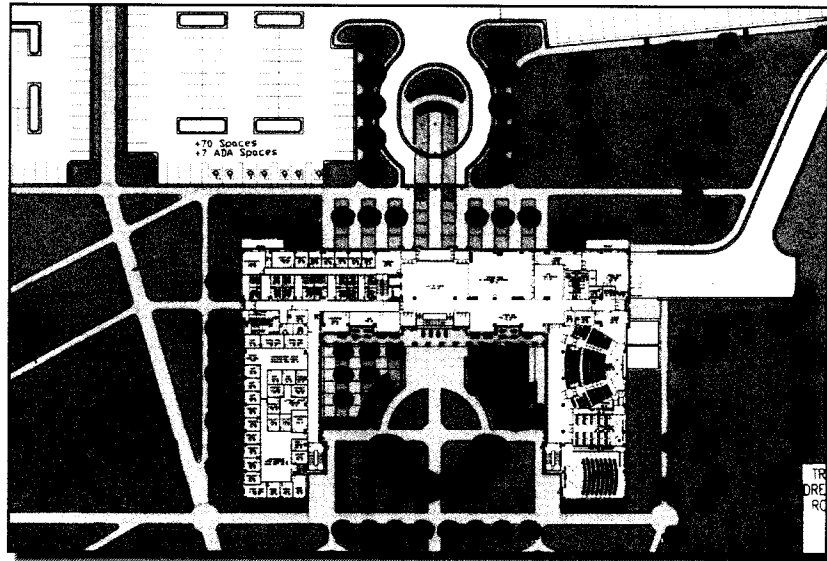
- Building to attract both students and faculty
- Interaction Spaces—Students-Students, Students-Faculty, Faculty-Faculty
- Student service—Advising, Placement, Study
- Student presence—keep students in the learning environment
- Classroom sizes to fit our program
- Business community presence with student interaction



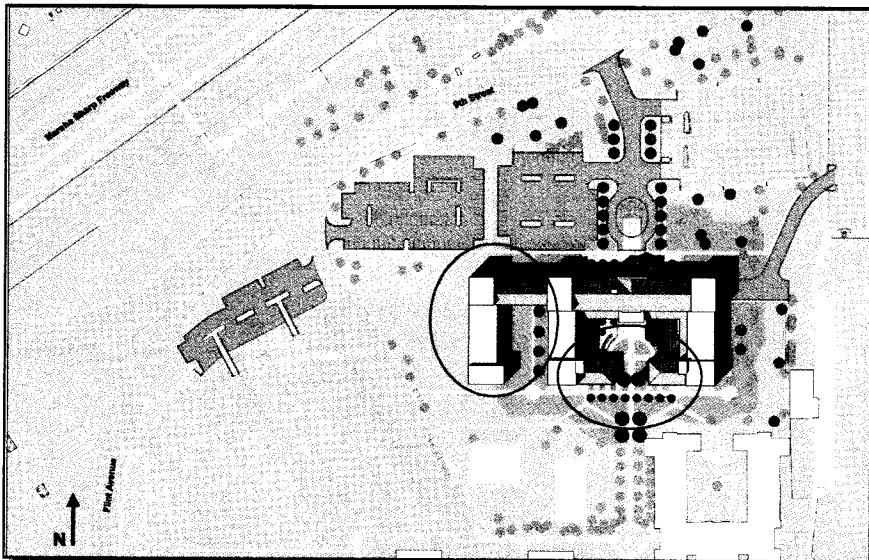




Rawls CoBA Site Plan

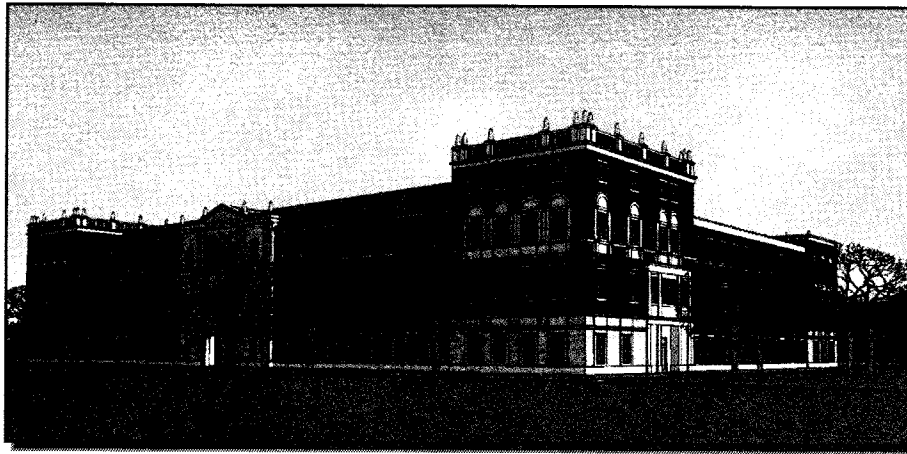


Rawls CoBA Expansion Site Plan





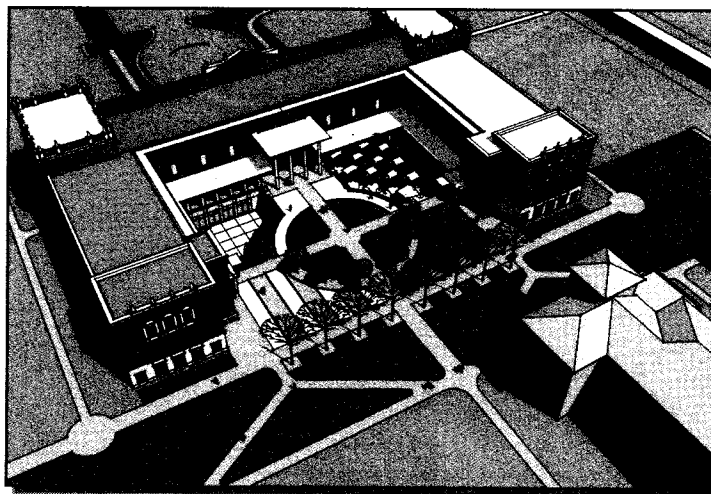
View from the Northwest



**FACILITIES
PLANNING &
CONSTRUCTION**
TEXAS TECH UNIVERSITY SYSTEM



Courtyard



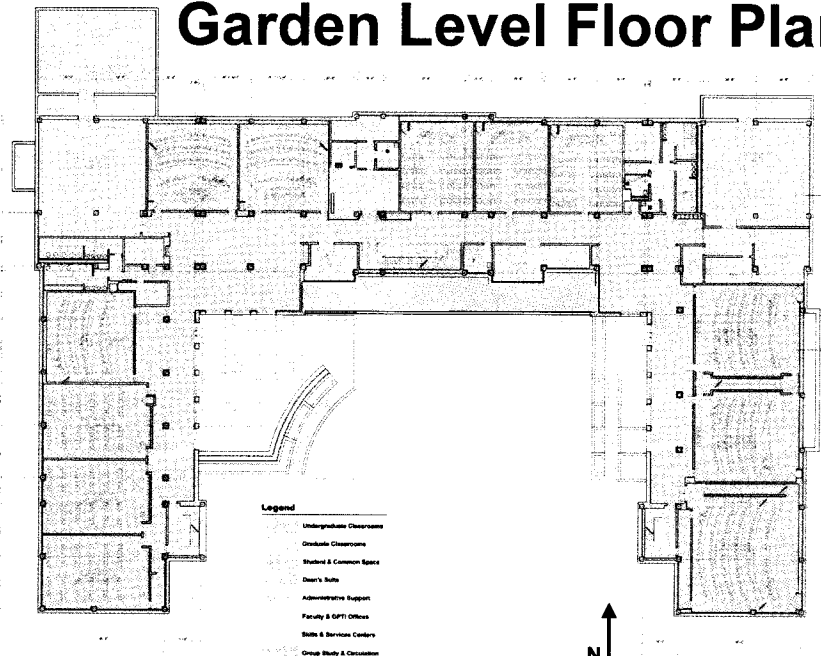
**FACILITIES
PLANNING &
CONSTRUCTION**
TEXAS TECH UNIVERSITY SYSTEM



Courtyard

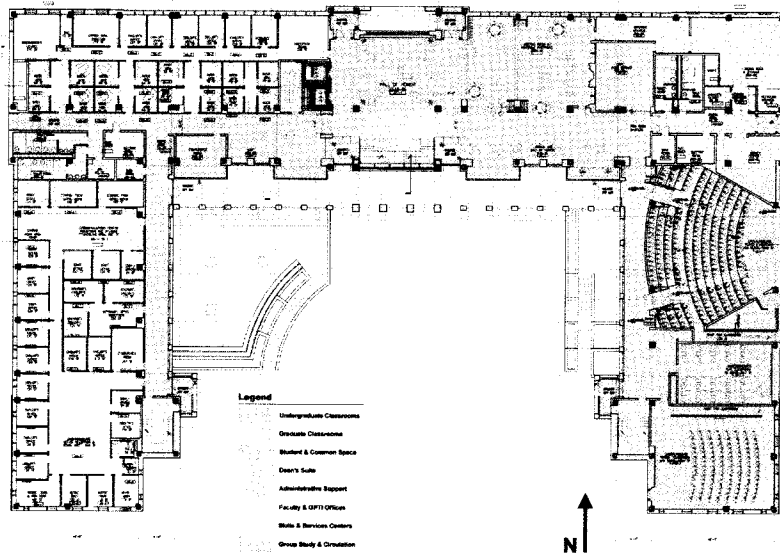


Garden Level Floor Plan

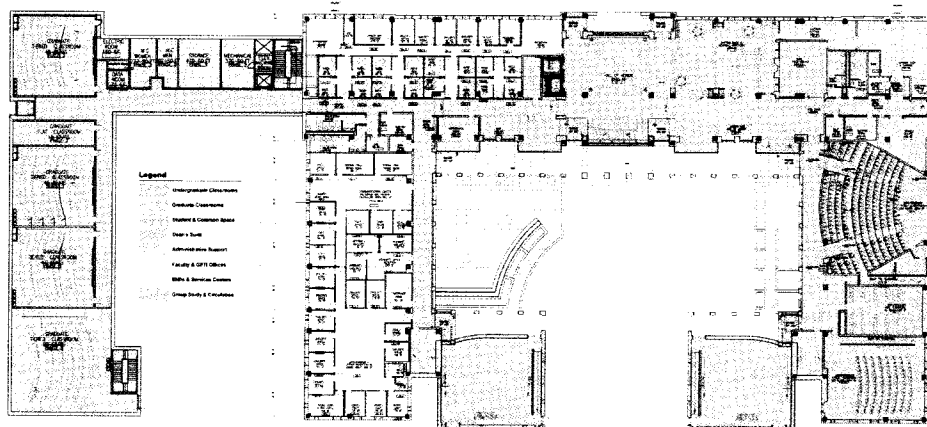




First Floor Plan

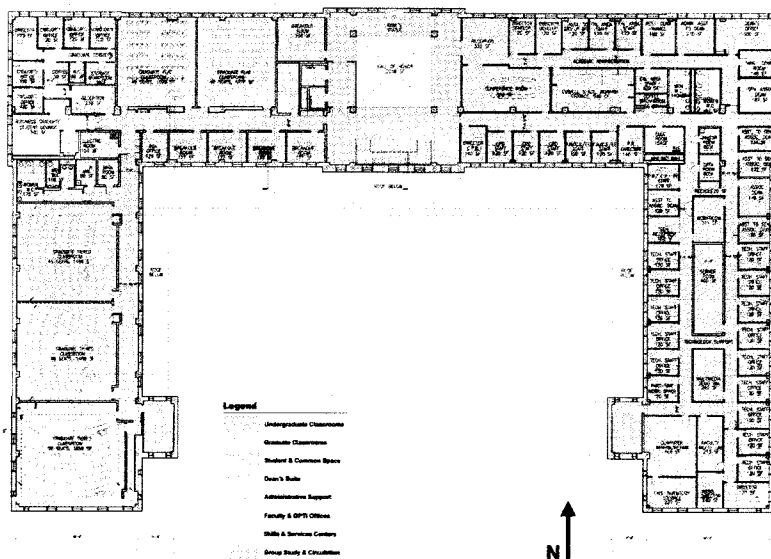


Expansion Plan

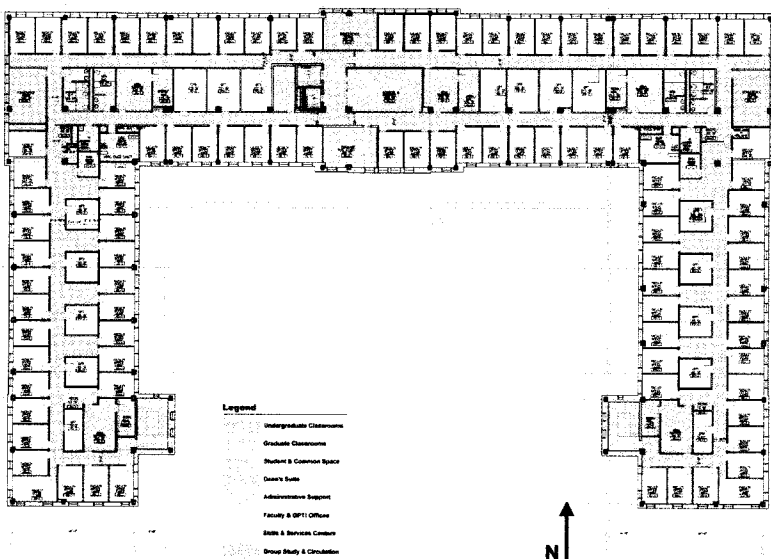




Second Floor Plan



Third Floor Plan





Scope of Work

- **Demolition of Existing Thompson/Gaston Hall and Related Site/Tunnel/Utilities/Parking**
 - Construct New 143,000 GSF Building –
 - Graduate and Undergraduate Classrooms
 - Faculty/Staff Offices
 - Professional Education Spaces
 - Stock Trading Room
 - Career Center
 - Advance Technology Support
- **Associated Site Work, Utility Infrastructure, Surface Parking, Landscape Enhancements, and Public Art**



Budget

Project Budget	\$ 70,000,000
Construction	\$ 49,350,000
Professional Services	\$ 7,500,000
FF&E	\$ 6,045,000
Administrative Costs	\$ 199,172
BOR Directed Fees	\$ 3,405,828
Contingency	\$ 3,500,000





Schedule

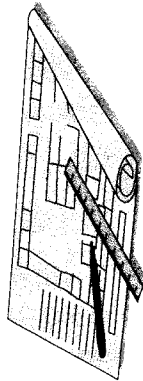
➤ Phase I - Abatement/Demolition of
Thompson Gaston Halls

- Start Construction August 18, 2008
- Complete Construction March 10, 2009

➤ Phase II - Rawls CoBA

- Start (Funds Permitting) June 2009
- Complete Construction June 2011

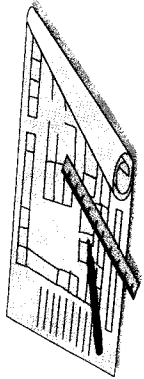




Project	Cost	Status	Completion Date
TTU			
Jones AT&T Stadium East Expansion	\$ 25,000,000	Under Construction	July 2010
Skyview's Relocation	\$ 1,500,000	Out for Bid	July 2010
Softball Team Facility	\$ 3,000,000	Under Construction	January 2010
Pulse Power Lab	\$ 1,500,000	Under Construction	August 2009
Memorial Circle Utility Tunnel Replacement	\$ 3,887,819	Under Construction	August 2009
Softball Field Improvements	\$ 1,000,000	Dugouts Complete / Batting Cage Under Construction	March 2009
Soccer Team Facility	\$ 4,080,000	Field Improve. Sub Complete / Team Facility Under Construction	September 2009
Track Renovation/Relocation	\$ 4,000,000	Track Sub. Complete / Striping Remains	January 2009
Art 3D Annex Ceramics/Klin Yard	\$ 1,556,937	Substantially Complete	October 2008
Student Leisure Pool	\$ 8,250,000	Under Construction	September 2009
Engineering Expansion/Renovation Phase I	\$ 10,000,000	Substantially Complete	January 2009
Horn/Knapp Window Replacement	\$ 2,500,000	Under Construction	November 2009
Thompson Gaston Demolition	\$ 2,200,000	Abatement & Demo Underway	March 2009
Marsha Sharp Freeway (TxDOT Project)	TBD	Under Construction	2010+
TOTAL	\$ 68,474,756		

Project	Cost	Status	Completion Date
ASU			
UC Dining Services Expansion	\$ 2,500,000	Substantially Complete	January 2009
Centennial Village Residence Hall	\$ 28,215,000	Open / Under Construction	August 2008/October 2008
TOTAL	\$ 30,715,000		

Project	Cost	Status	Completion Date
HSC			
Amarillo School of Pharmacy Expansion	\$ 8,010,000	Under Construction	September 2009
El Paso Vivarium Upgrade	\$ 737,479	Complete	December 2008
International Pain Center	\$ 7,000,000	Complete	November 2008
Amarillo Family Medicine Relocation	\$ 7,026,925	Under Construction	July 2009
Amarillo HSC - Coulter Research Building	\$ 18,152,430	Substantially Complete	January 2009
Total	\$ 40,926,834		
GRAND TOTAL	\$ 140,116,590		



Project	Cost	Status	Completion Date
TTU			
Rawls College of Business Administration	\$ 67,800,000	Design In Progress	June 2011
CoBA Building Renovations	\$ 25,000,000	Abatement & AV Survey Initiated	TBD
Architecture Building LifeSafety Upgrade	\$ 2,716,164	Programming Complete	TBD
Biology Building LifeSafety Upgrade	\$ 3,021,321	Programming Complete	TBD
Experimental Science Lab Build Out	\$ 6,000,000	Evaluating Alternatives	TBD
Admin Bldg Improvements	\$ 4,000,000	Design In Progress	TBD
System Offices Relocation	\$ 6,500,000	Design In Progress	TBD
Campus Chapel	\$ 3,000,000	Design Professional RFQ Posted	TBD
Jones AT&T Stadium North End Zone Expansion	\$ 6,500,000	Awaiting Funding	TBD
SPICE Chess Area	\$ 71,000	Contracted	TBD
Scholarship Walk	TBD	Contracted	TBD
TOTAL	\$ 124,608,485		

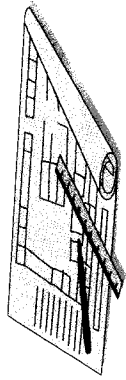
Project	Cost	Status	Completion Date
ASU			
University Hall/Abatement Demolition	\$ 2,500,000	Design In Progress	TBD
Rec/Wellness/CHP Expansion	\$ 7,000,000	Design In Progress	TBD
Hardeman Hall Renovation	\$ 12,000,000	Design In Progress	TBD
Plaza Verde Residence Hall	\$ 37,500,000	Design In Progress	TBD
Library IT Commons Renovation	\$ 4,000,000	Design In Progress	TBD
TOTAL	\$ 63,000,000		

Project	Cost	Status	Completion Date
HSC			
Lubbock Simulation Center	\$ 7,236,000	Design Pro Preparing RFQ	TBD
Lubbock Cancer Research Labs	\$ 3,700,000	Design Pro Preparing RFQ	TBD
HSC Memorial Garden	\$ 181,000	Contracted	TBD
TOTAL	\$ 11,117,000		
GRAND TOTAL	\$ 198,725,485		

Bricks and Mortar Report

Future Projects
February 2008

www.fpc.ttu.edu



Project	Cost	Status	Completion Date
TTU			
Engineering Expansion/Renovation Phase II	\$ 60,000,000	Programming in Progress	TBD
Honors College	\$ 6,000,000	Proposed	TBD
The Rawls Course Clubhouse	\$ 2,500,000	Proposed	TBD
Dairy Barn Renovation	TBD	Proposed	TBD
Vietnam Center	\$ 35,000,000	Proposed	TBD
TOTAL	\$ 68,500,000		

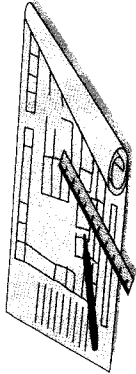
Project	Cost	Status	Completion Date
ASU			
College of Nursing and Allied Health	\$ 42,850,000	Proposed	TBD
Campus Safety and Modernization	\$ 22,278,000	Proposed	TBD
Campus Expansion/Community Development	\$ 23,707,000	Proposed	TBD
TOTAL	\$ 88,835,000		

Project	Cost	Status	Completion Date
HSC			
Lubbock Education and Research Expansion	\$ 30,000,000	Proposed	TBD
El Paso Clinical Sciences Building	\$ 29,000,000	Proposed	TBD
El Paso Medical Science Building II	\$ 95,000,000	Proposed	TBD
Amarillo Simulation Center	\$ 18,000,000	Proposed	TBD
Permian Basin Academic Building	\$ 14,000,000	Proposed	TBD
Laura W. Bush Institute Renovations	\$ 12,800,000	Proposed	TBD
TOTAL	\$ 198,800,000		
GRAND TOTAL	\$ 356,135,000		

Bricks and Mortar Report

Projects Completed February 2009

www.fpc.ttu.edu



Project	Cost	Status	Completion Date
TTU			
High Performance Research Computer Facility	\$ 1,800,000	Complete	September 2008
Sneed/Bledsoe HVAC Upgrade	\$ 6,000,000	Complete	August 2008
Bledsoe Window Replacement	\$ 1,000,000	Complete	August 2008
4th Street Sewer Upgrade	\$ 560,000	Complete	October 2008
Mark & Becky Lanier Prof. Development Center	\$ 13,665,000	Complete	April 2008
NCAA Soccer Complex	\$ 1,998,000	Complete	August 2007
Art 3-D Annex	\$ 8,603,315	Complete	September 2007
Outreach & Extended Studies Building	\$ 8,000,000	Complete	October 2007
Softball Field Repairs	\$ 509,055	Complete	September 2007
Discovery Mall	\$ 1,167,698	Complete	July 2007
Student Wellness Center	\$ 9,229,767	Complete	March 2007
CDRC / CSAR	\$ 8,126,506	Complete	October 2006
Scholarship Donor Recognition Walk	\$ 225,000	Complete	November 2006
Sneed/Gordon/Bledsoe LifeSafety Upgrades	\$ 5,792,000	Complete	September 2006
Jones AT&T Stadium Field Improvements	\$ 2,860,000	Complete	August 2006
Student Union Building Phase II B	\$ 6,034,070	Complete	November 2006
Student Union Building Phase III	\$ 1,299,043	Complete	July 2006
NRHC - Christine DeVitt Wing	\$ 3,278,509	Complete	June 2006
Experimental Sciences Building	\$ 36,702,120	Complete	March 2006
Texas Tech Parkway	\$ 9,222,073	Complete	February 2006
Grover E. Murray Residence Hall	\$ 24,613,235	Complete	January 2006
Animal and Food Sciences Building	\$ 16,809,505	Complete	February 2006
Wall/Gates Life Safety Upgrade	\$ 3,094,012	Complete	January 2006
Student Parking Expansion	\$ 660,000	Complete	October 2005
Student Union Bldg. Expansion/Renovation	\$ 37,372,009	Complete	October 2003/February 2005
Museum NSRL Addition	\$ 3,555,259	Complete	August 2005
Admin Building Stone Repair	\$ 2,262,839	Complete	January 2005
Jones SBC Stadium Stage IIA /IIB	\$ 53,578,710	Complete	May 2004/Sept 2004

Hulen Clement Fire Protection	\$	3,234,692	Complete	August 2004
Football Training Facility	\$	10,974,030	Complete	May 2004
Marsha Sharp Center for Student Athletes	\$	3,789,332	Complete	January 2004
The Rawls Course Support Facilities	\$	1,692,000	Complete	November 2003
Admin Building Roof Repairs	\$	827,901	Complete	November 2003
The Rawls Course	\$	9,013,000	Complete	August 2003
Horn/Knapp Fire Suppression	\$	3,026,015	Complete	December 2002
Campus Conference Bonfire Circle	\$	400,000	Complete	September 2002
English-Philosophy & Education Complex	\$	44,910,950	Complete	August 2002
Flint Avenue Parking Facility	\$	10,670,916	Complete	August 2002
Dan Law Field	\$	1,612,000	Complete	June 2002
Fuller Track Field House	\$	480,000	Complete	June 2002
Pfluger Fountain	\$	826,000	Complete	April 2002
Recreation Center Expansion/Renovation	\$	12,070,277	Complete	November 2001
Jones SBC Stadium Stage I	\$	22,000,000	Complete	September 2001
Frazier Plaza & Masked Rider Statue	\$	515,000	Complete	September 2001
Tennis-Softball Complex	\$	4,059,784	Complete	September 2001
Campus Fiber Optic Connection	\$	1,667,000	Complete	September 2001
West Hall/Visitors Center	\$	5,703,441	Complete	August 2001
Broadway Gatehouses	\$	816,000	Complete	August 2001
Marquee	\$	352,000	Complete	August 2001
Stangel/Murdough Fire Suppression	\$	1,616,293	Complete	August 2001
Chitwood/Weymouth Fire Suppression	\$	2,779,706	Complete	August 2000
TOTAL	\$	411,054,062		

Project	Cost	Status	Completion Date
HSC			
El Paso Strategic Space Study	TBD	Complete	TBD
El Paso - Archer Building Renovations	\$ 1,700,000	Complete	March 2008
Texas Tech Physicians Medical Pavilion	\$ 36,462,388	Complete	June 2006/Dec 2007
El Paso Medical Education Bldg.	\$ 45,000,000	Complete	November 2007
Abilene School of Pharmacy	\$ 9,087,743	Complete	July 2007
El Paso Medical Science Bldg. I Build Out	\$ 3,564,306	Complete	July 2006
Amarillo Campus Improvements	\$ 1,424,677	Complete	September 2006
HSC Roof Replacement	\$ 1,747,867	Complete	April 2006
The Larry Combest Health & Wellness Center	\$ 1,551,549	Complete	January 2006
El Paso Medical Science Bldg. I	\$ 36,977,869	Complete	February 2006
HSC Campus Infrastructure Improvement	\$ 5,028,277	Complete	January 2006
HSC El Paso Clinic Expansion/Renovation	\$ 9,638,830	Complete	February 2005
HSC El Paso Hydronic Pipe Replacement	\$ 1,552,209	Complete	February 2005
HSC Academic Classroom Bldg.	\$ 14,963,993	Complete	October 2003
HSC Synergistic Center	\$ 1,995,105	Complete	March 2003
Amarillo Academic/Clinic Facility	\$ 23,636,894	Complete	April 2002
Midland Physicians Assistant Building	\$ 6,000,000	Complete	August 2001
HSC Admin Relocation	\$ 1,862,000	Complete	March 2001
Odessa Clinic Renovation	\$ 1,200,000	Complete	September 2000
Communications Disorders Renovation	\$ 2,161,000	Complete	May 2000
TOTAL	\$ 205,554,707		
GRAND TOTAL COMPLETED	\$ 616,608,769		
PROGRAM TOTAL	\$ 1,311,585,844		

2008 Annual Report

OFFICE OF AUDIT SERVICES

Kimberly F. Turner, CPA
Chief Audit Executive

December 11, 2008



MISSION AND OBJECTIVES

Mission

- The Office of Audit Services is to assist the board and other units of the Texas Tech University System in identifying, avoiding, and mitigating risks.

Objectives

- Provide independent, objective assurance and consulting services designed to add value and improve operations; and
- Assist the System in accomplishing its objectives with a systematic, disciplined approach to evaluate and improve the effectiveness of risk management, control, and governance processes

Section 07.02, Regents' Rules

PROCESSES TO ENSURE RISK COVERAGE

- Annual plan based on institutional risks
- Engagement level risk assessment
- Flexible annual plan with unallocated hours for changing risks, fraud investigations, and special projects
- Follow-up process to ensure action plans are implemented
- Continuing education tailored to risk areas

QUALITY ASSURANCE PROGRAM

Quality assurance measures are required by:

- The Texas Internal Auditing Act
- The IIA's International Standards for the Professional Practice of Internal Auditing
- Generally Accepted Government Auditing Standards
- Regents' Rule 07.02, *Audits*
- Office of Audit Services' internal policies

QUALITY ASSURANCE PROGRAM

Office of Audit Services (OAS) Policies

- Audit Manual
- Policy Manual

Engagement Procedures

- Disclosure of independence impairments of individual auditors
- Supervision and detailed review of all work by in-charge auditor and engagement director
- Additional high-level review on select engagements
- Team completion of engagement performance measures
- Performance assessments of individual auditors after every engagement
- Rotation of engagement director for recurring engagements

QUALITY ASSURANCE PROGRAM

Other Internal Evaluations

- Annual performance measures, monitored quarterly
- Annual assessment of the quality assurance program (new GAGAS requirement)
- Comprehensive internal self-assessment every three years

External Evaluations

- Compilation and review of information from client evaluations
- Peer review—required every three years

SIGNIFICANT 2008 PROJECTS

TTUS Conflicts of Interest

TTU Centers and Institutes

TTUHSC Fraud Risk Assessments

ASU Carr Foundation Operational Audit

RISKS ADDRESSED IN 2008 AUDITS

Texas Tech University

Year	2008	2007	2006	2005	2004	2003	2002	2001	2000	1999	1998	1997	1996	1995	1994	1993	1992	1991	1990	1989	1988	1987	1986	1985	1984	1983	1982	1981	1980	1979	1978	1977	1976	1975	1974	1973	1972	1971	1970	1969	1968	1967	1966	1965	1964	1963	1962	1961	1960	1959	1958	1957	1956	1955	1954	1953	1952	1951	1950	1949	1948	1947	1946	1945	1944	1943	1942	1941	1940	1939	1938	1937	1936	1935	1934	1933	1932	1931	1930	1929	1928	1927	1926	1925	1924	1923	1922	1921	1920	1919	1918	1917	1916	1915	1914	1913	1912	1911	1910	1909	1908	1907	1906	1905	1904	1903	1902	1901	1900	1899	1898	1897	1896	1895	1894	1893	1892	1891	1890	1889	1888	1887	1886	1885	1884	1883	1882	1881	1880	1879	1878	1877	1876	1875	1874	1873	1872	1871	1870	1869	1868	1867	1866	1865	1864	1863	1862	1861	1860	1859	1858	1857	1856	1855	1854	1853	1852	1851	1850	1849	1848	1847	1846	1845	1844	1843	1842	1841	1840	1839	1838	1837	1836	1835	1834	1833	1832	1831	1830	1829	1828	1827	1826	1825	1824	1823	1822	1821	1820	1819	1818	1817	1816	1815	1814	1813	1812	1811	1810	1809	1808	1807	1806	1805	1804	1803	1802	1801	1800	1799	1798	1797	1796	1795	1794	1793	1792	1791	1790	1789	1788	1787	1786	1785	1784	1783	1782	1781	1780	1779	1778	1777	1776	1775	1774	1773	1772	1771	1770	1769	1768	1767	1766	1765	1764	1763	1762	1761	1760	1759	1758	1757	1756	1755	1754	1753	1752	1751	1750	1749	1748	1747	1746	1745	1744	1743	1742	1741	1740	1739	1738	1737	1736	1735	1734	1733	1732	1731	1730	1729	1728	1727	1726	1725	1724	1723	1722	1721	1720	1719	1718	1717	1716	1715	1714	1713	1712	1711	1710	1709	1708	1707	1706	1705	1704	1703	1702	1701	1700	1699	1698	1697	1696	1695	1694	1693	1692	1691	1690	1689	1688	1687	1686	1685	1684	1683	1682	1681	1680	1679	1678	1677	1676	1675	1674	1673	1672	1671	1670	1669	1668	1667	1666	1665	1664	1663	1662	1661	1660	1659	1658	1657	1656	1655	1654	1653	1652	1651	1650	1649	1648	1647	1646	1645	1644	1643	1642	1641	1640	1639	1638	1637	1636	1635	1634	1633	1632	1631	1630	1629	1628	1627	1626	1625	1624	1623	1622	1621	1620	1619	1618	1617	1616	1615	1614	1613	1612	1611	1610	1609	1608	1607	1606	1605	1604	1603	1602	1601	1600	1599	1598	1597	1596	1595	1594	1593	1592	1591	1590	1589	1588	1587	1586	1585	1584	1583	1582	1581	1580	1579	1578	1577	1576	1575	1574	1573	1572	1571	1570	1569	1568	1567	1566	1565	1564	1563	1562	1561	1560	1559	1558	1557	1556	1555	1554	1553	1552	1551	1550	1549	1548	1547	1546	1545	1544	1543	1542	1541	1540	1539	1538	1537	1536	1535	1534	1533	1532	1531	1530	1529	1528	1527	1526	1525	1524	1523	1522	1521	1520	1519	1518	1517	1516	1515	1514	1513	1512	1511	1510	1509	1508	1507	1506	1505	1504	1503	1502	1501	1500	1499	1498	1497	1496	1495	1494	1493	1492	1491	1490	1489	1488	1487	1486	1485	1484	1483	1482	1481	1480	1479	1478	1477	1476	1475	1474	1473	1472	1471	1470	1469	1468	1467	1466	1465	1464	1463	1462	1461	1460	1459	1458	1457	1456	1455	1454	1453	1452	1451	1450	1449	1448	1447	1446	1445	1444	1443	1442	1441	1440	1439	1438	1437	1436	1435	1434	1433	1432	1431	1430	1429	1428	1427	1426	1425	1424	1423	1422	1421	1420	1419	1418	1417	1416	1415	1414	1413	1412	1411	1410	1409	1408	1407	1406	1405	1404	1403	1402	1401	1400	1399	1398	1397	1396	1395	1394	1393	1392	1391	1390	1389	1388	1387	1386	1385	1384	1383	1382	1381	1380	1379	1378	1377	1376	1375	1374	1373	1372	1371	1370	1369	1368	1367	1366	1365	1364	1363	1362	1361	1360	1359	1358	1357	1356	1355	1354	1353	1352	1351	1350	1349	1348	1347	1346	1345	1344	1343	1342	1341	1340	1339	1338	1337	1336	1335	1334	1333	1332	1331	1330	1329	1328	1327	1326	1325	1324	1323	1322	1321	1320	1319	1318	1317	1316	1315	1314	1313	1312	1311	1310	1309	1308	1307	1306	1305	1304	1303	1302	1301	1300	1299	1298	1297	1296	1295	1294	1293	1292	1291	1290	1289	1288	1287	1286	1285	1284	1283	1282	1281	1280	1279	1278	1277	1276	1275	1274	1273	1272	1271	1270	1269	1268	1267	1266	1265	1264	1263	1262	1261	1260	1259	1258	1257	1256	1255	1254	1253	1252	1251	1250	1249	1248	1247	1246	1245	1244	1243	1242	1241	1240	1239	1238	1237	1236	1235	1234	1233	1232	1231	1230	1229	1228	1227	1226	1225	1224	1223	1222	1221	1220	1219	1218	1217	1216	1215	1214	1213	1212	1211	1210	1209	1208	1207	1206	1205	1204	1203	1202	1201	1200	1199	1198	1197	1196	1195	1194	1193	1192	1191	1190	1189	1188	1187	1186	1185	1184	1183	1182	1181	1180	1179	1178	1177	1176	1175	1174	1173	1172	1171	1170	1169	1168	1167	1166	1165	1164	1163	1162	1161	1160	1159	1158	1157	1156	1155	1154	1153	1152	1151	1150	1149	1148	1147	1146	1145	1144	1143	1142	1141	1140	1139	1138	1137	1136	1135	1134	1133	1132	1131	1130	1129	1128	1127	1126	1125	1124	1123	1122	1121	1120	1119	1118	1117	1116	1115	1114	1113	1112	1111	1110	1109	1108	1107	1106	1105	1104	1103	1102	1101	1100	1099	1098	1097	1096	1095	1094	1093	1092	1091	1090	1089	1088	1087	1086	1085	1084	1083	1082	1081	1080	1079	1078	1077	1076	1075	1074	1073	1072	1071	1070	1069	1068	1067	1066	1065	1064	1063	1062	1061	1060	1059	1058	1057	1056	1055	1054	1053	1052	1051	1050	1049	1048	1047	1046	1045	1044	1043	1042	1041	1040	1039	1038	1037	1036	1035	1034	1033	1032	1031	1030	1029	1028	1027	1026	1025	1024	1023	1022	1021	1020	1019	1018	1017	1016	1015	1014	1013	1012	1011	1010	1009	1008	1007	1006	1005	1004	1003	1002	1001	1000	999	998	997	996	995	994	993	992	991	990	989	988	987	986	985	984	983	982	981	980	979	978	977	976	975	974	973	972	971	970	969	968	967	966	965	964	963	962	961	960	959	958	957	956	955	954	953	952	951	950	949	948	947	946	945	944	943	942	941	940	939	938	937	936	935	934	933	932	931	930	929	928	927	926	925	924	923	922	921	920	919	918	917	916	915	914	913	912	911	910	909	908	907	906	905	904	903	902	901	900	899	898	897	896	895	894	893	892	891	890	889	888	887	886	885	884	883	882	881	880	879	878	877	876	875	874	873	872	871	870	869	868	867	866	865	864	863	862	861	860	859	858	857	856	855	854	853	852	851	850	849	848	847	846	845	844	843	842	841	840	839	838	837	836	835	834	833	832	831	830	829	828	827	826	825	824	823	822	821	820	819	818	817	816	815	814	813	812	811	810	809	808	807	806	805	804	803	802	801	800	799	798	797	796	795	794	793	792	791	790	789	788	787	786	785	784	783	782	781	780	779	778	777	776	775	774	773	772	771	770	769	768	767	766	765	764	763	762	761	760	759	758	757	756	755	754	753	752	751	750	749	748	747	746	745	744	743	742	741	740	739	738	737	736	735	734	733	732	731	730	729	728	727	726	725	724	723	722	721	720	719	718	717	716	715	714	713	712	711	710	709	708	707	706	705	704	703	702	701	700	699	698	697	696	695	694	693	692	691	690	689	688	687	686	685	684	683	682	681	680	679	678	677	676	675	674	673	672	671	670	669	668	667	666	665	664	663	662	661	660	659	658	657	656	655	654	653	652	651	650	649	648	647	646	645	644	643	642	641	640	639	638	637	636	635	634	633	632	631	630	629	628	627	626	625	624	623	622	621	620	619	618	617	616	615	614	613	612	611	610	609	608
------	------	------	------	------	------	------	------	------	------	------	------	------	------	------	------	------	------	------	------	------	------	------	------	------	------	------	------	------	------	------	------	------	------	------	------	------	------	------	------	------	------	------	------	------	------	------	------	------	------	------	------	------	------	------	------	------	------	------	------	------	------	------	------	------	------	------	------	------	------	------	------	------	------	------	------	------	------	------	------	------	------	------	------	------	------	------	------	------	------	------	------	------	------	------	------	------	------	------	------	------	------	------	------	------	------	------	------	------	------	------	------	------	------	------	------	------	------	------	------	------	------	------	------	------	------	------	------	------	------	------	------	------	------	------	------	------	------	------	------	------	------	------	------	------	------	------	------	------	------	------	------	------	------	------	------	------	------	------	------	------	------	------	------	------	------	------	------	------	------	------	------	------	------	------	------	------	------	------	------	------	------	------	------	------	------	------	------	------	------	------	------	------	------	------	------	------	------	------	------	------	------	------	------	------	------	------	------	------	------	------	------	------	------	------	------	------	------	------	------	------	------	------	------	------	------	------	------	------	------	------	------	------	------	------	------	------	------	------	------	------	------	------	------	------	------	------	------	------	------	------	------	------	------	------	------	------	------	------	------	------	------	------	------	------	------	------	------	------	------	------	------	------	------	------	------	------	------	------	------	------	------	------	------	------	------	------	------	------	------	------	------	------	------	------	------	------	------	------	------	------	------	------	------	------	------	------	------	------	------	------	------	------	------	------	------	------	------	------	------	------	------	------	------	------	------	------	------	------	------	------	------	------	------	------	------	------	------	------	------	------	------	------	------	------	------	------	------	------	------	------	------	------	------	------	------	------	------	------	------	------	------	------	------	------	------	------	------	------	------	------	------	------	------	------	------	------	------	------	------	------	------	------	------	------	------	------	------	------	------	------	------	------	------	------	------	------	------	------	------	------	------	------	------	------	------	------	------	------	------	------	------	------	------	------	------	------	------	------	------	------	------	------	------	------	------	------	------	------	------	------	------	------	------	------	------	------	------	------	------	------	------	------	------	------	------	------	------	------	------	------	------	------	------	------	------	------	------	------	------	------	------	------	------	------	------	------	------	------	------	------	------	------	------	------	------	------	------	------	------	------	------	------	------	------	------	------	------	------	------	------	------	------	------	------	------	------	------	------	------	------	------	------	------	------	------	------	------	------	------	------	------	------	------	------	------	------	------	------	------	------	------	------	------	------	------	------	------	------	------	------	------	------	------	------	------	------	------	------	------	------	------	------	------	------	------	------	------	------	------	------	------	------	------	------	------	------	------	------	------	------	------	------	------	------	------	------	------	------	------	------	------	------	------	------	------	------	------	------	------	------	------	------	------	------	------	------	------	------	------	------	------	------	------	------	------	------	------	------	------	------	------	------	------	------	------	------	------	------	------	------	------	------	------	------	------	------	------	------	------	------	------	------	------	------	------	------	------	------	------	------	------	------	------	------	------	------	------	------	------	------	------	------	------	------	------	------	------	------	------	------	------	------	------	------	------	------	------	------	------	------	------	------	------	------	------	------	------	------	------	------	------	------	------	------	------	------	------	------	------	------	------	------	------	------	------	------	------	------	------	------	------	------	------	------	------	------	------	------	------	------	------	------	------	------	------	------	------	------	------	------	------	------	------	------	------	------	------	------	------	------	------	------	------	------	------	------	------	------	------	------	------	------	------	------	------	------	------	------	------	------	------	------	------	------	------	------	------	------	------	------	------	------	------	------	------	------	------	------	------	------	------	------	------	------	------	------	------	------	------	------	------	------	------	------	------	------	------	------	------	------	------	------	------	------	------	------	------	------	------	------	------	------	------	------	------	------	------	------	------	------	------	------	------	------	------	------	------	------	------	------	------	------	------	------	------	------	------	------	------	------	------	------	------	------	------	------	------	------	------	------	------	------	------	------	------	------	------	------	------	------	------	------	------	------	------	------	------	------	------	------	------	------	------	------	------	------	------	------	------	------	------	------	------	------	------	------	------	------	------	------	------	------	------	------	------	------	------	------	------	------	------	------	------	------	------	------	------	------	------	------	------	------	------	------	------	------	------	------	------	------	------	------	------	------	------	------	------	------	------	------	------	------	------	------	------	------	------	------	------	------	------	------	------	------	------	------	------	------	------	------	------	------	------	------	------	------	------	------	------	------	------	------	------	------	------	------	------	------	------	------	------	------	------	------	------	------	------	------	------	------	------	------	------	------	------	------	------	------	------	------	------	------	------	------	------	------	------	------	------	------	------	------	------	------	------	------	------	------	------	------	------	------	------	------	------	------	------	------	------	------	------	------	------	------	------	------	------	------	------	-----	-----	-----	-----	-----	-----	-----	-----	-----	-----	-----	-----	-----	-----	-----	-----	-----	-----	-----	-----	-----	-----	-----	-----	-----	-----	-----	-----	-----	-----	-----	-----	-----	-----	-----	-----	-----	-----	-----	-----	-----	-----	-----	-----	-----	-----	-----	-----	-----	-----	-----	-----	-----	-----	-----	-----	-----	-----	-----	-----	-----	-----	-----	-----	-----	-----	-----	-----	-----	-----	-----	-----	-----	-----	-----	-----	-----	-----	-----	-----	-----	-----	-----	-----	-----	-----	-----	-----	-----	-----	-----	-----	-----	-----	-----	-----	-----	-----	-----	-----	-----	-----	-----	-----	-----	-----	-----	-----	-----	-----	-----	-----	-----	-----	-----	-----	-----	-----	-----	-----	-----	-----	-----	-----	-----	-----	-----	-----	-----	-----	-----	-----	-----	-----	-----	-----	-----	-----	-----	-----	-----	-----	-----	-----	-----	-----	-----	-----	-----	-----	-----	-----	-----	-----	-----	-----	-----	-----	-----	-----	-----	-----	-----	-----	-----	-----	-----	-----	-----	-----	-----	-----	-----	-----	-----	-----	-----	-----	-----	-----	-----	-----	-----	-----	-----	-----	-----	-----	-----	-----	-----	-----	-----	-----	-----	-----	-----	-----	-----	-----	-----	-----	-----	-----	-----	-----	-----	-----	-----	-----	-----	-----	-----	-----	-----	-----	-----	-----	-----	-----	-----	-----	-----	-----	-----	-----	-----	-----	-----	-----	-----	-----	-----	-----	-----	-----	-----	-----	-----	-----	-----	-----	-----	-----	-----	-----	-----	-----	-----	-----	-----	-----	-----	-----	-----	-----	-----	-----	-----	-----	-----	-----	-----	-----	-----	-----	-----	-----	-----	-----	-----	-----	-----	-----	-----	-----	-----	-----	-----	-----	-----	-----	-----	-----	-----	-----	-----	-----	-----	-----	-----	-----	-----	-----	-----	-----	-----	-----	-----	-----	-----	-----	-----	-----	-----	-----	-----	-----	-----	-----	-----	-----	-----	-----	-----	-----	-----	-----	-----	-----	-----	-----	-----	-----	-----	-----	-----	-----	-----	-----	-----	-----	-----	-----	-----	-----	-----	-----	-----	-----	-----	-----	-----	-----	-----	-----	-----	-----	-----	-----	-----	-----	-----	-----	-----	-----	-----	-----	-----	-----	-----	-----	-----	-----	-----	-----	-----	-----	-----	-----	-----	-----	-----	-----	-----	-----	-----	-----	-----	-----	-----	-----	-----	-----	-----	-----	-----	-----	-----	-----	-----	-----

[illegible]

RISKS ADDRESSED IN 2008 AUDITS

Angelo State University

- Student safety
- Fraud
- Compliance with Texas Public Investments Act
- Compliance with Robert & Nona Carr Will
- Inappropriate use of funds
- Misstated financial information

OFFICE OF AUDIT SERVICES STAFF

15 Auditors

- 7 with Master's degrees
- 145 years of combined career experience
 - *80+ years of experience with Texas Tech, including ASU*
- Certifications
 - *6 Certified Public Accountants*
 - *3 Certified Internal Auditors*
 - *2 Certified Information Systems Auditors*
 - *1 Certified Information Systems Security Professional*
 - *1 Certification in Control Self-Assessment*

OFFICE OF AUDIT SERVICES STAFF

Professional Commitment and Involvement

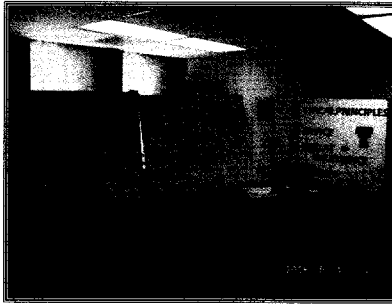
- ACUA Past-President and Board Member
- ACUA Midyear Conference Director
- TACUA Secretary and Board Member
- AICPA Ambassador
- The Institute of Internal Auditors (IIA) Seminar Instructor
- Texas Higher Education Coordinating Board facilities task force member
- Peer reviewer for The University of Texas System Audit Office
- Published article on fraud risk assessment in College & University Auditor
- Presentations to college classes and professional associations
- Community involvement in leadership positions

OTHER VALUE-ADDED SERVICES

- TTU SACS Quality Enhancement Plan Steering Committee
- TTU Ethical Institution Task Force
- HSC Institutional Compliance Committee
- ASU Residence Life software implementation committee
- ASU Staff Senator
- ConnecTech (Banner implementation) Committees
- System-wide Hotline Marketing Task Force
- Cash handling and control environment training
- Ethics presentations in various forums

OTHER VALUE-ADDED SERVICES

ESPN College Gameday



OFFICE OF AUDIT SERVICES

Current Report to the Board

CURRENT REPORTS

El Paso Dept of Facilities Operations & Maintenance

- Performed after a report of potential conflict of interest
- Director found to have conflicts with several vendors
- \$116,000 over 10 years spent with these vendors
- AVPs will conduct training on ethics and on purchasing guidelines
- AVPs will institute verification and monitoring of purchasing
- Former Director is no longer employed at TTUHSC

CURRENT REPORTS

Coordinating Board Facilities Audit at ASU

- Based on new requirements by the Coordinating Board
- ASU in the initial group of universities to be subject to the rule
- Will be required every 5 years
- Objective is to determine compliance with Coordinating Board rules on project approval
- ASU was a member of Texas State University System during the audit period
- 2 of 3 projects reviewed did not have proper approvals after scope changes
- TTUS Facilities Planning & Construction has helped ensure ASU now has appropriate processes in place

Office of Audit Services
2008 Annual Report Risk Coverage
Based on TTU Risk Footprint of 2007

#	MANAGERIAL PROCESSES	RISKS	1	AUDITS	RISKS	2	AUDITS	RISKS	3	AUDITS	RISKS	4	AUDITS	RISKS	5	AUDITS	RISKS	6	AUDITS	RISKS	7	AUDITS
A	Research Grants & Contracts	Inability to attract and retain quality research faculty		Advance System Review; Credit Card Info. Security; Rawls College; Internal Affairs	Inadequate return of indirect costs to generating units		Centers & Institutes	Retaining unproductive research faculty		Centers & Institutes	Inability to effectively leverage allocated resources		Centers & Institutes; Research Incentive Awards	Improper expenditures of F&A recovery and of licensing revenue		Research Incentive Awards					Falsification of research data or misreporting of results	
B	Information & Communication	Non-compliance w/ security OPA & best practices		Advance System Review; Credit Card Info. Security; Rawls College; Internal Affairs	Loss of confidential, sensitive, or financial data		Centers & Institutes	DIR mandated IT policies negatively impacting TTU operations		Centers & Institutes	Ineffective implementation of Banner and related products		ConnecTech Committees; Rawls College	Lack of funds to upgrade hardware & software							Inadequate operating space	
C	Athletics	Insufficient revenue to cover operations and debt servicing		Athletics Financial Review	Academics and Compliance Issues			Inability to maintain BCS conference		NCAA Compliance	Inability to attract and retain quality coaches			Failure to build, maintain competitive facilities							Litigation and unethical behaviors	NCAA Compliance
D	Academic Affairs	Inefficient funding for key faculty startup packages			Failure to maintain SCH generation			Inability to reallocate resources to meet changing demands		Centers & Institutes	Inability to hire and retain quality faculty			Inefficient use of academic facilities							Not affording cost increases for Library materials	
E	Institutional Advancement	Lack of endorsement for scholarships		Office of Investments	Inability to raise funds to meet scholarship needs		College of Engineering	Ineffective management of funds (funds, donors, etc.)		Foundation, Office of Investments, College of Engineering; Credit Card Information	Misappropriation or mismanagement of donor funds			Increases in cost of fundraising efforts paid by institution							Lack of communication of development activities w/ System	
F	Institutional Administration	Lack of coordination/communication among TTUS, TTU, TTUISC		Centers & Institutes	Failure to maintain a viable campus master plan that supports institution's academic mission			Lack of planning and preparation for emergency incident			Failure to reallocate resources to priorities of excellence		Centers & Institutes	Individual leaders involved in illegal or unethical activities		Conflicts of Interest; Regents' Travel					Loss of confidence in TTU administration by students, faculty, staff	Conflicts of Interest; Regents' Travel
G	Government Relations	Reduction in state funding to higher education			Unanticipated regulatory impacts that strain resources			Ineffective Legislative Appropriations Request (LAR)			Changes in Department of Education accreditation policies			Negative perceptions of institution by law makers and government administrators							Failure to consistently communicate priorities to all constituencies	
H	Facilities & Physical Plant	Excessive increase in utility costs		School of Law, Contracting Office; Security, Physical Plant	Death or serious injury due to life safety or code violation		Environmental Health & Safety Compliance	Excessive deferred maintenance			Fire destroys major facility			Disaster destroys a major portion of campus							Attacks or vandalism of research facilities	
I	Administration & Finance	Failure to provide services for friendly service			Failure in billing and collection process		School of Law	Ineffective management of financial resources		Centers & Institutes; Office of Investments; Contracting Office	Loss of critical contracts		Contracting Office	Financial statements not included or documented in budget process							High Facilities Project Construction project rates and overhead charges	
J	Student Affairs	Compliance with and response to policies related to student mental health			Lack of infrastructure to support auxiliary facilities, programs and services			Lack of revenue to auxiliary related to exemptions and waivers			Critical incidents involving students in Lubbock community											
K	Human Resources	Erosion of employee benefits by the State Legislature			Inadequate training in selection of a diverse and qualified workforce			Inability to properly handle disciplinary actions			Inadequately trained employees										Lack of clear employee performance expectations	

Legend: Impact is shown first, and then probability.

HL, MH, LL = Extensive Risk Management & Considerable Risk Management (all Levels of Control) plus a traditional audit
 HL, MH, LL = Manage and Monitor (all Levels of Control but no traditional audit)
 MH, LL = Monitor (only Execution Controls & Supervisory Controls)
 ML, LH, LM, LL = Accept (accept the risk and have no controls)

Office of Audit Services
2008 Annual Report Risk Coverage
Based on TTU Risk Footprint of 2007

RISKS	8	AUDITS	RISKS	9	AUDITS	RISKS	10	AUDITS	RISKS	11	AUDITS	RISKS	12	AUDITS
HL	Inability to deliver on contractual research agreements		HL	Inability to follow through with start-up commitments to new faculty		HL	Mismanagement of funds cause loss of grant funding	KONK-KTIT; PARS; Texas Workforce Development Grants	HL	Poor controls for research result in violations	PARS	HL	Ineffective coordination of programs between TTU and TLUHSC	
HL	Disruption of phone service		HL	Unauthorized alteration of University data or infrastructure		HL	Disruption of IT services due to disasters or other causes				HL	HL	Inability to attract IT staff or loss of IT staff with knowledge of TTU systems	
HL	Tragic accident to athletic staff team and/or sport fan			Ineffective game management and security			Results of terrorist attacks on local and/or distant							
HL	Failure of an individual college to maintain accreditation	Rawls College	HL	Failure to maintain SACS accreditation	QEP Steering Committee and Task Force	HL	Inefficient class offerings for students to make academic progress			HL	Competition from other universities in off-campus teaching sites			Budgeting and staffing decisions based on bad growth estimates
MH	Lack of fund raising to maintain endowments			Loss of Key Personnel			Lack of fund raising to meet building needs				HL	HL	HL	
HL	Major scandal causes unfavorable national reputation	Credit Card Info. Security; Advance System Review; Conflicts of Interest; Regents' Travel	HL	Inappropriate use of force by police officers			Lack of communication & cooperation among departments							
HL	Inability to maintain effective relationships with government leadership													
	Sustained power outage heating/cooling loss													
MH	Inability of auxiliaries to cash flow; inadequate management facility; debt service			Failure to develop/maintain traditional culture, & pay issues			Improper contract management leads to lawsuit	Contracting Office						

Legend: Impact is shown first, and then probability.

HH, HH = Extensive Risk Management & Considerable Risk Management (all Levels of Control^a plus a traditional audit)
HL, HH = Manage and Monitor; (all Levels of Control but no traditional audit)
HH, MM = Monitor (only Execution Controls & Supervisory Controls)
ML, LL, MM = Accept (accept the risk and have no controls)

RISKS	AUDITS	RISKS	AUDITS	RISKS	AUDITS	RISKS	AUDITS	RISKS	AUDITS
Business Continuity, inadequate emergency response or disaster recovery plan		Release or loss of select agent or other substances, etc		Improper use of equipment, PPE and safety procedures (e.g. Bior)		Poor or inadequate planning of facilities (e.g. Master Planning)			
Ineffective generation and marketing of products & financial support		Inadequate communication and coordination between ITUS component institutions		Inappropriate expenditure of resources		Loss of TOC contact		Corrections/Managed Health Care	
Inadequate research funding		Ineffective coordination of ITUS component research opportunities between institutions		Mishandling materials due to failure to follow lab protocols		Principal investigators not supervising lab assistants			
Failure to retain diverse faculty		Failure to retain students		Insufficient or outdated education equipment		Inadequate classroom support			
Inadequate student health services		Ineffective recruiting of students							
Inadequate training of employees		Improper accounting of endowments		Inadequate cash handling procedures		Inadequate purchasing controls		Confessing Processes: Rural and Urban Managed Health Care	
Inadequate animal health program		Operating facilities without safety standards		Lack of facility safety with IWB and AGLUC		Inadequate training of medical record clerks			
Inaccurate test coding		Medical errors result in continued fines		Mishandling patient specimens		Patient non-compliance with physician-directed care			

Office of Audit Services
2008 Annual Report Risk Coverage
Based on TTUS Risk Footprint of 2007

MANAGERIAL PROCESSES	RISKS	AUDITS	RISKS	AUDITS	RISKS	AUDITS	RISKS	AUDITS	RISKS	AUDITS
1			2		3		4		5	
A Board of Regents										7
B Strategic Management	Damage to reputation due to poor external relationships		Selection of senior leadership that fails to be in alignment with the mission		Lack of financial stewardship causes loss of future funding	Office of Investments; Foundation	Poor Board decisions result from insufficient information		Future resources jeopardized due to poor financial strategic planning decisions	
C External Relations	Risk of being misquoted in the press		Outdated website information		Inaccurate or inappropriate information provided to media		Poor community relations and partnerships		Liability issues of events serving alcohol	
D Institutional Advancement	Unrealized fundraising		Foundation tax exempt status jeopardized due to misapplication	Foundation	Not complying with donor intentions		Poor donor relations		Limited donor base	
E Administrative Support	Failure to educate Board results in uninformed decisions		Inadequate support from outside legal counsel		Security breach of sensitive information	Advance System Review	Lack of resources hinders job performance		Lack of resources lowers employee morale	
F Information & Communication	Failure to establish and communicate effective communication/marketing messaging program for external and internal target audiences		Not providing timely, adequate, unbiased information to the Board		Not setting appropriate tone at the top	Conflicts of Interest	Inadequate guidance to System components		Negative publicity	Advance System Review; Conflicts of Interest
G Facilities	Improper management of project budget		Not completing buildings on time		Not using donated property as donor intended		Poor quality of bid submissions		Gifts-in-kind do not benefit the institutions	
H Financial Services	Inadequate funding for scholarships	Office of Investments; College of Engineering	Mismanagement of endowments	Foundation	Not following investment guidelines results in bad investments	Office of Investments	Insufficient funding received from components		Lack of appropriate insurance coverage when adverse event occurs	
I Governmental Relations	Possible reduction in state funding to higher education		Failure to adequately communicate required reports to state agencies		Negative external audit report		Failure to ensure Legislature perceives Tech in a positive perspective		Sanctions due to affirmative action violations	
J Human Resources	Inadequate staffing within components of System		Insufficient resources to handle employee grievances		Security breach of firewall		Discriminatory personnel practices		Human resources lawsuits	
K Safety & Security	Uninsured loss		Preparation for active shooter scenario		Emergency management situation		Background checks not conducted or considered		Security breach of firewall	

Legend: Impact is shown first, and then probability.

HH, HM = Highest risks: Prioritize time and resources to handle these risks first
 HL, MH = Medium-high risks: Ensure controls are in place and monitor closely
 MM, ML, LH = Medium-low risks: Monitor controls as time and resources allow after handling higher risks
 LL, LL = Lowest risks: Prioritize these risks and the related controls last

Office of Audit Services
2008 Annual Report Risk Coverage
Based on TTUS Risk Footprint of 2007

RISKS	AUDITS	RISKS	AUDITS	RISKS	AUDITS	RISKS	AUDITS	RISKS	AUDITS
	8		9		10		11		12
Diminished returns result from investment decisions	Office of Investments	Damaged reputation due to poor bond rating		Lack of direction and accountability due to insufficient strategic planning		Approving contracts that could be detrimental to our mission			
Failure to respond to open record requests									
Poor internal communications impact donor relations		Poor donor record management	Advance System Review	Lack of follow up with donors (stewardship)		Accepting gifts-in-kind with more costs than benefits		Poor marketing/ publicity impacts fundraising	
Wasting resources by not maintaining equipment		Failure to document past decisions in Board minutes		Poor information leading to bad decisions		Poorly conceived/ written policies lead to unfavorable litigation		Major failure of computing systems	
Inconsistent message (public appearances)		Not addressing audit recommendations		Not monitoring critical success factors		Reporting incorrect info to Board and SAO			
Insufficient number of bids solicited									
Inaccurate financials	Foundation	Inadequate coverage for Medical Malpractice claims		Noncompliance with entire System budget		Inadequate cash flow for investment because funds not deposited		Waste of resources due to unnecessary travel	
Insufficient workers' comp insurance assessment budget		Failure to follow record retention schedule							
Lack of proper training for employees		Poor employee retention		Poor record management (i.e. lack of documentation)		Lack of employee diversity		Unproductive employees	
Damage of reputation due to injury of an employee at trail		Unsafe student environment		Implementation and testing of emergency management preparedness					

TEXAS TECH UNIVERSITY SYSTEM
OFFICE OF AUDIT SERVICES
PRIORITIZED AUDIT PLAN
Fiscal Year 2009

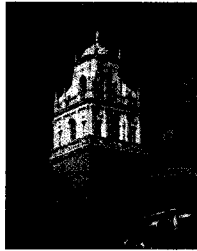
PRIORITY	ENTITY	AUDIT AREA	BUDGETED HOURS	BUDGET ADJUSTMENTS	STATUS AS OF NOV 30	ACTUAL HOURS	TIME STILL NEEDED	BUDGET vs ACTUAL
		TOTAL ENGAGEMENT HOURS AVAILABLE	18,000					
		REQUIRED AUDITS						
Required	TTUS	Texas Tech University Foundation	Financial (assist)	130				130
Required	TTUS	Regents, Chancellor, & Presidents Travel and Credit Cards	Compliance (assist)	20	In Progress	5	15	0
Required	TTUS	Office of Audit Services Annual Report	Compliance	40	Complete	20		20
Required	TTUS	Office of Audit Services Annual Plan	Compliance	80				80
Required	TTUS	Office of Audit Services Self-Assessment	Compliance	150				150
Required	TTUS	Office of Audit Services Peer Review	Compliance	80	In Progress	4	76	0
Required	TTUS	State Auditor's Office Miscellaneous Projects	Miscellaneous (assist)	80	(10)			70
		TTU: 2008 Statewide Financial Audit	Financial (assist)	10	In Progress		10	0
Required	TTU	Texas Higher Education Coordinating Board ARP/ATP Grants	Compliance	150				150
Required	TTU	NCAA Compliance	Compliance	400				400
Required	TTU	Athletics Financial Review	Financial (assist)	240	In Progress	144	96	0
Required	TTU	Joint Admission Medical Program Grants	Compliance	60	Complete	41		19
Required	TTU	KOUM-FM	Financial (assist)	300	In Progress	190	110	0
Required	TTU	Football Attendance Certification	Compliance	10				10
Required	HSC	SACS Financial Review	Financial	400	In Progress	123	277	0
Required	HSC	State Comptroller's Office Post-Payment Audit	Compliance (assist)	10	Complete			10
Required	HSC	Texas Higher Education Coordinating Board ARP/ATP Grants	Compliance	120				120
Required	HSC	Texas Higher Education Coordinating Board Residency Grants	Compliance	220	In Progress	48	172	0
Required	HSC	Correctional Managed Health Care Committee Contract	Compliance	200				200
Required	HSC	Joint Admission Medical Program Grants	Compliance	60	Complete	53		7
Required	ASU	Joint Admission Medical Program Grants	Compliance	60	Complete	72		(12)
Required	ASU	Athletics Financial Review	Financial (assist)	10				10
Required	ASU	Texas Higher Education Coordinating Board Facilities Audit	Compliance	130	Complete	124		6
		TOTALS FOR REQUIRED AUDITS	2,820	130		824	756	1,370
		AUDITS IN PROGRESS AT AUGUST 1, 2008						
Prior Year	TTUSA	Construction Management	Financial/Operational	430	In Progress	210	220	0
Prior Year	TTU & HSC	Research Infrastructure	Operational/Compliance	10	Complete	35		(25)
Prior Year	TTU	State Auditor's Office: Student Fee Audit	Compliance (assist)	5	Complete			5
Prior Year	TTU	Athletics Business Office	Controls	135	Complete	132		3
Prior Year	HSC	IT Security	IT Controls/Mgt Advisory	100	Complete	56		44
Prior Year	HSC	IDX-TES Implementation	IT Controls/Mgt Advisory	20	Complete	40		(20)
Prior Year	HSC	School of Medicine--Odessa Campus	Operational/Financial	140	Complete	74		66
Prior Year	HSC	School of Medicine--Amarillo Campus	Operational/Financial	20	Complete	19		1
Prior Year	ASU	NCAA Compliance	Compliance	160	Complete	127		33
Prior Year	ASU	State Auditor's Office: 2008 Statewide Financial Audit	Financial (assist)	5	In Progress		5	0
Prior Year	ASU	Construction Management	Financial/Operational	255	In Progress	289	40	(74)
Prior Year	ASU	Controller's Office	Operational/Controls	100	Complete	112		(12)
Prior Year	TTUS	Wrap-up on Audits Included in August BOR Report		10	Complete			10
		TOTALS FOR AUDITS IN PROGRESS	1,390	-		1,094	265	31
		UNPLANNED SPECIAL PROJECTS AND INVESTIGATIONS						
		Total Hours Budgeted for Special Projects & Investigations	4,425	(1,477)				2,948
		IN PROGRESS AT AUGUST 1, 2008						
Special	TTUS	TeamMate TEC Implementation	Special	30	Complete	30		0
Special	TTU	Physical Plant Warehouse Inventory	Special	20	Complete	20		0
Special	TTU	Human Sciences Scholarships	Special	182	Complete	182		0
Special	HSC	Expenditure Review	Special	260	Complete	260		0
Special	HSC	El Paso Facilities Maintenance & Operations	Special	173	Complete	173		0
		BEGUN AFTER AUGUST 1, 2008						
Special	TTUS	Fund 5140	Special	77	Complete	77		0
Special	TTU	Highland Lakes Expenditures	Special	120	On Hold	105	15	0
Special	HSC	School of Nursing Wellness Center	Special	175	Complete	175		0
Special	HSC	Permian Basin Rural Health Clinics	Special	100	In Progress	82	18	0
Special	TTU	Upward Bound Cash Controls	Special	60	In Progress	14	46	0
Special	TTU	Athletics Tennis Special	Special	200	In Progress	64	136	0
Special	ALL	Misc. Hotline Projects	Special	80	In Progress	74	6	0
		SPECIAL PROJECTS AND INVESTIGATIONS TOTALS	4,425	1,477		1,256	221	2,948

TEXAS TECH UNIVERSITY SYSTEM
OFFICE OF AUDIT SERVICES
PRIORITIZED AUDIT PLAN
Fiscal Year 2009

PRIORITY	ENTITY	AUDIT AREA	BUDGETED HOURS	BUDGET ADJUSTMTS	STATUS AS OF NOV 30	ACTUAL HOURS	TIME STILL NEEDED	BUDGET vs ACTUAL
HIGHEST PRIORITY								
	TTUS	Gateway		400	In Progress	109	291	0
	TTU	Info-Institutional Voucher Process	400		On Hold	52	348	0
	TTU	Banner Student/Finance System Feeds	450		In Progress	315	135	0
	TTU	eProcurement Processes	350					350
	HSC	HealthNet	450		On Hold	48	402	0
	HSC	eProcurement Processes	350					350
	ASU	Financial Aid Office	400					400
	ASU	IT General Controls Review	550					550
	ASU	One Card Office	400		In Progress	64	336	0
		HIGHEST PRIORITY TOTALS	3,350	400		588	1,512	1,650
MODERATE PRIORITY								
2	TTUS	Technology Transfer/Commercialization	350					350
2	TTU	Sponsored Programs Accounting and Reporting	400					400
2	TTU	College of Mass Communications	300		On Hold	282	18	0
2	TTU	College of Outreach & Distance Education	350	200	On Hold	335	215	0
2	HSC	El Paso Fixed Assets	350		Complete	198		152
2	HSC	El Paso IT General Controls Review	600					600
2	HSC	Electronic Medical Record Implementation	450					450
2	ASU	Study Abroad Program	250					250
		MODERATE PRIORITY TOTALS	3,050	200		815	233	2,202
LOWER PRIORITY								
3	TTUS	Audit Report Follow-Up Procedures and Reporting	250		In Progress	126	124	0
3	TTU	NCAA Compliance Risk Assessment	70					70
3	TTU	Student Affairs Risk Assessment	200					200
3	TTU	Enrollment Growth Efficiencies	400					400
3	HSC	El Paso Pediatrics Grant Management	400		On Hold	313	87	0
3	HSC	School of Pharmacy Research Funding	400					400
3	ASU	Division of Continuing Studies	300		In Progress	241	59	0
		LOWER PRIORITY TOTALS	2,020			680	270	1,070
OTHER VALUE-ADDED WORK								
		Total Hours Budgeted for Other Value-Added Work	945	(296)			649	
Other	TTUS	Big 12 Internal Auditor Conference			Ongoing	15		
Other	TTUS	Cash Handling and Control Environment Workshops			Ongoing	35		
Other	TTUS	Fraud Awareness Training			Ongoing			
Other	TTUS	ConnectTech Steering Committee (Banner project)			Ongoing	6		
Other	TTUS	ConnectTech Security Committee (Banner project)			Ongoing	27		
Other	TTUS	ConnectTech Transition Testing (Banner project)			Ongoing	6		
Other	TTUS	ConnectTech Reporting Strategy Committee (Banner project)			Ongoing	1		
Other	TTUS	Enterprise Risk Management			Ongoing			
Other	TTUS	Compliance Hotline Maintenance			Ongoing	8		
Other	TTU	SACS Quality Enhancement Plan (QEP) Steering Committee			Ongoing			
Other	TTU	SACS QEP Ethical Institution Task Force			Ongoing			
Other	TTU	Travel Task Force			Ongoing	3		
Other	HSC	Institutional Compliance Working Committee			Ongoing	5		
Other	N/A	Professional Organizations (ACUA, TACUA, IIA, TSCPA, SAIAP, ACFE)			Ongoing	61		
Other	N/A	Misc. Conference Presentations			Ongoing	52		
Other	TTUS	Other Miscellaneous Projects			Ongoing	77		
		OTHER VALUE-ADDED WORK TOTALS	945			296	-	649
		TOTAL ENGAGEMENT HOURS	18,000	730		5,553	3,257	9,920

TEXAS TECH UNIVERSITY SYSTEM
OFFICE OF AUDIT SERVICES
PRIORITIZED AUDIT PLAN
Fiscal Year 2009

PRIORITY	ENTITY	AUDIT AREA	BUDGETED HOURS	BUDGET ADJUSTMTS	STATUS AS OF NOV 30	ACTUAL HOURS	TIME STILL NEEDED	BUDGET vs ACTUAL
		ADDITIONAL PROJECTS NOT ON PLAN						
4	TTUS	Back IT Risk Assessment Follow-Up	IT/Follow-Up	400				
4	TTU	Scholarship Office	Operational/Controls	400				
4	TTU	Export Controls	Compliance	400				
4	HSC	El Paso Accreditation Preparation	Management Advisory	300				
4	ASU	Accreditation Preparation	Management Advisory	225				
		EXTRA AUDIT HOURS NEEDED	1,725					
		KEY						
	TTUS	Texas Tech University System and/or inclusive of multiple Texas Tech institutions						
	TTUSA	Texas Tech University System Administration						
	TTU	Texas Tech University						
	HSC	Texas Tech University Health Sciences Center						
	TTU & HSC	Areas with parallel functions or shared responsibility						
	ASU	Angelo State University						
	N/A	Work that is not attributable to a particular institution or campus						
Required	Audits that are mandated by law, Operating Policies, standards, contracts, etc. Will be performed based on timing of external deadlines.							
Prior Year	Engagements from prior year annual plan that were in progress at August 1. Goal is to complete them early in the year.							
Special	Unplanned special projects and investigations							
1	Engagements that were deemed most critical per the risk assessment at August 1.							
2	Engagements that were deemed to be moderately critical per the risk assessment at August 1.							
3	Engagements that were deemed least critical per the risk assessment at August 1.							
4	Areas of exposure that need attention, but have not been included in the official plan because of resource constraints.							
Other	Other projects, including committee service, class development and instruction, professional organizations, etc.							



Office of Audit Services

El Paso Campus

Kimberly F. Turner, CPA
Chief Audit Executive

December 11, 2008

OFFICE OF AUDIT SERVICES—EL PASO CAMPUS

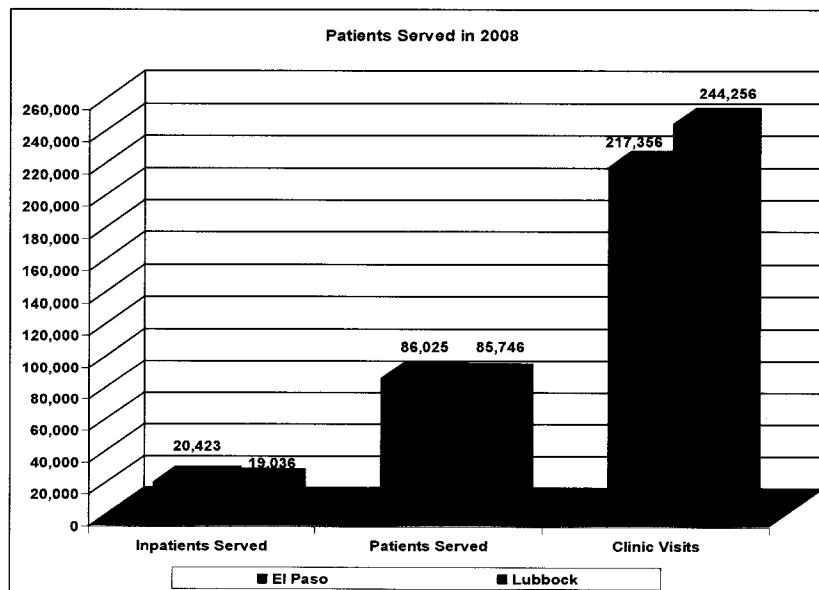
El Paso Growth

TTUHSC EL PASO GROWTH AND RISKS

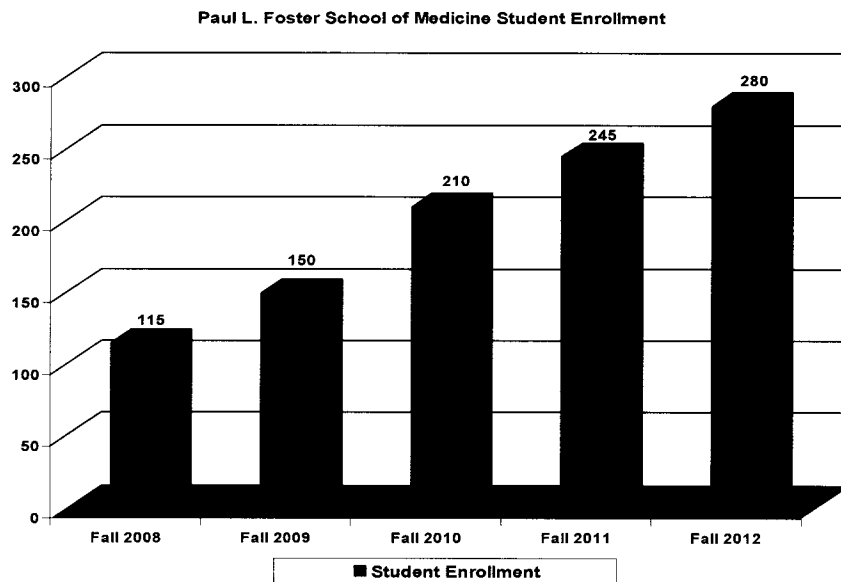
Comparative information

- Operating budget for fiscal year 2009
 - HSC Lubbock \$241 million (40% of total)
 - HSC El Paso \$129 million (21%)
- Employee headcount for Fall 2008
 - HSC Lubbock 2,370 (43% of total)
 - HSC El Paso 1,178 (21%)

TTUHSC EL PASO GROWTH AND RISKS



TTUHSC EL PASO GROWTH AND RISKS



TTUHSC EL PASO GROWTH AND RISKS

Recent audit engagements are indicative of the risks expected of a large campus

- El Paso Fraud Risk Assessment
- El Paso Facilities Maintenance & Operations
- El Paso Fixed Assets
- El Paso Pediatrics Grant Management

OFFICE OF AUDIT SERVICES—EL PASO CAMPUS

Potential Positive Impact

AUDIT SERVICES IN EL PASO

Onsite audit staff could more effectively assist the Board of Regents and Health Sciences Center management in identifying, avoiding, and mitigating risks.

AUDIT SERVICES IN EL PASO

Reporting Relationship with System Audit Office

- Direct reporting line to System Office
- Quality of work would be monitored by System Office
- Assistant Director responsible for overseeing the day-to-day operations of the Office of Audit Services at El Paso and for overseeing the audits conducted on the El Paso campus.
- Audit support would still be provided by the System Office staff for certain engagements.

AUDIT SERVICES IN EL PASO

Expected outcomes

- Stronger resource to administration, faculty, and staff
 - Increased hours dedicated to El Paso campus
 - Enhanced understanding of El Paso campus risks
 - Enhanced responsiveness as issues arise
- Deterrent to fraud
 - Training opportunities in cash handling, ethics, and fraud awareness
 - Proactive fraud auditing

OFFICE OF AUDIT SERVICES—EL PASO CAMPUS

Resources

AUDIT SERVICES IN EL PASO

External indicators of staff size

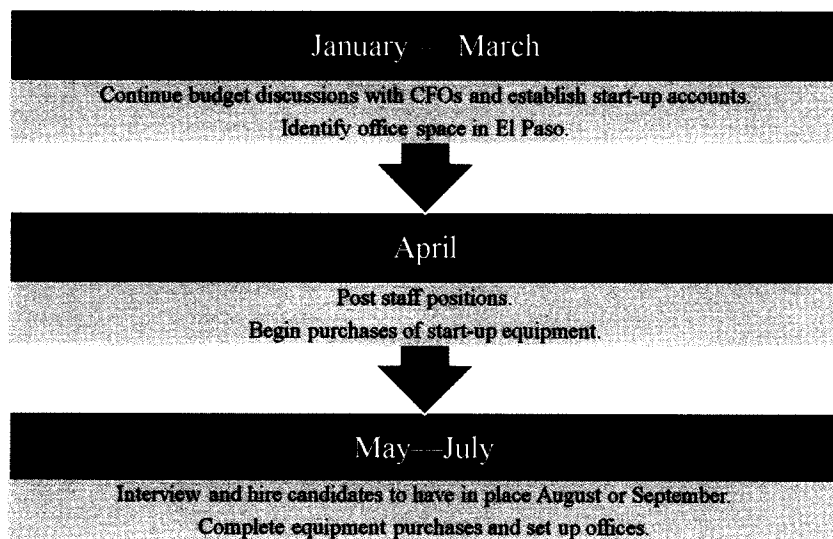
- UT System Policy
 - \$100M-150M expenditures = 3-5 auditors
 - *El Paso 2009 budgeted expenditures: \$129 million*
 - \$1B+ expenditures = 14+ auditors
 - *Texas Tech 2009 budgeted expenditures: \$1.322 billion*
- Recent ACUA Survey: 1.46 Auditors per \$100M Revenue
 - *TTUS Consolidated 2009 budgeted revenues: \$1.274 billion = 18-19 auditors*
 - *El Paso 2009 budgeted revenues: \$118 million = 2 auditors*
- Thus: Propose two auditors for El Paso

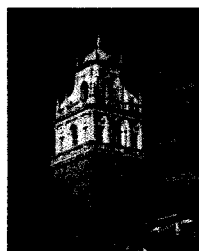
AUDIT SERVICES IN EL PASO

Proposed budget

Salaries	\$ 115,000
Fringe benefits	28,750
Administrative support	14,000
Maintenance & operations	23,000
One-time capital needs	<u>10,000</u>
Total	\$ 190,750

PROPOSED TIMELINE

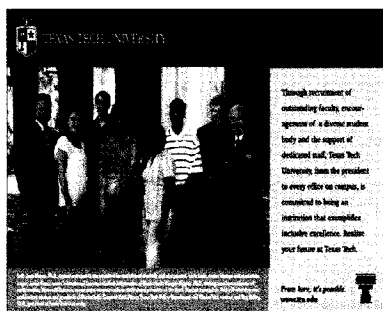




Office of Institutional Diversity

Juan S. Muñoz, Ph.D.
Special Assistant to the President, Institutional Diversity
Associate Vice Provost
Associate Professor

*Board of Regents Presentation
December 11, 2007*



- Office location – Admin 162
- Annual Report
- Minority Access Inc. Diversity Award
- Native American Summer Institute
- Institute for Developmental Gifted and Advanced Learners (IDEAL)
- Ford Foundation Big XII Difficult Dialogues
- Maddox Foundation Outreach and Summer Institute



- President's Diversity and Equity Council
- Big XII Chief Diversity Officer Meeting
- Student Leadership Symposium
- Phoebe Eng, author of *Warrior Lessons*
- Veteran Actor Pepe Serna, *One Man Show*
- West Texas *Showdown* Step Show
- Fourth Annual *Day of the Dead* Celebration
- Faculty to Lead Native American Heritage Month
- College of Mass Communication Diversity Grant
- South Texas Initiatives

3



Cultural Performances	\$60,000
Campus Diversity Enhancement Support	\$70,000
Community Engagement Initiatives	\$45,000
Faculty/Staff Academic & Inclusive Excellence Programs	\$10,000
Student Scholarships	\$45,000
Academic Outreach	\$32,000
Faculty Excellence Fund	\$250,000
Student Transition Support	\$50,000

Grants Awarded

Greater Texas Foundation	\$15,000
Texas Higher Education Coordinating Board	\$65,000
J.F. Maddox Foundation	\$100,000
Helen Jones Foundation	\$20,000

4



Texas Tech University is committed to the inherent dignity of all individuals and the celebration of diversity. We foster an environment of mutual respect, appreciation, and tolerance for differing values, beliefs, and backgrounds. We encourage the application of ethical practices and policies that ensure that all are welcome on the campus and are extended all of the privileges of academic life. We value the cultural and intellectual diversity of our university because it enriches our lives and the community as a whole, promoting access, equity, and excellence.

5



Chancellor's Report
Texas Tech University System
Board of Regents Meeting
December 12, 2008

Chancellor Hance stated he had several things to present. One was mentioned earlier when Dr. Valerie Paton was introduced regards the SACS accreditation. It's an unfortunate occurrence which should have never happened. We have made changes and adjustments and are now the gold standard for any school going through this. In talking with Dr. Silver and Dr. Belle Wheelan, they could not have been more complimentary of our staff and everything. Everyone pitched in and we are better for it and the fact that we cut down on some core curriculum. Everyone wanted their class and core curriculum so it would be required so that there would be a justification for what they were doing and it just added up and up. We are better off. We don't ever want to go through that again and we will not go through that again.

On fundraising, we are \$9 million above what we were a year ago at this time. In the last two years, we have had the two greatest years we've ever had as far as cash is concerned. We've had the first and third greatest years overall in fundraising but in our third year we had about \$112 million in cash with the total of \$120 something million. There was one year back in 2001 or something where we were at \$130 million but less that \$30 million was in cash. We really focused on cash and I believe that the gentlemen who was giving the report from the new group who is doing our financial assistance and planning is pretty well on target with what he said yesterday about the cash we have brought in and the fact that we are ahead of last year. We are probably one of a few universities doing that. That can always change but we have stayed focused. You can't read the headlines everyday and think that is where you should be or you will get discouraged. I appreciate that some of you have met with our people and are willing to help. As we get our campaign kicked off all of the regents will be called—present and former regents—to assist in that regard.

On our technology commercialization, we continue to make progress. You heard the report on the chemical wipes and what has happened there with Dr. Seshadri "Ram" Ramkumar and Ron Kendall. David Miller is doing a good job. As head of our Commercialization Technology, he has gone through all of the patents and all the research needed to determine what can be commercialized. We have established a committee that will review all of these and see what is feasible for us to try to take public and get commercialized. Dave Sharbutt, who is a very successful businessman in Lubbock, is chairing that committee. We are in the process of recruiting other people to join that committee like Bob Herd, who has been a contributor; he has agreed to serve. I want good business people who can look at something and know whether the time and money should be spent on a particular project.

On the subject of commencement, Senator John McCain will be giving our address today. We are very honored to have him here. He'll be flying in and out the same day because they have a vote this morning and also tomorrow morning. That is subject to change due to what is happening in congress with the automobile bailout issue. For

those who will be attending, we will have a short private reception before commencement.

Things have been going well. Relationships are going well. The Board is doing a good job. I have been here two years. I feel we have made a lot of great progress. We have brought in a lot of good people. I am optimistic about Texas Tech. I love it more now than when I took the job. It is fun. There are some heartaches as we go along. We had a memorial service on Monday in this room for a young lady whose life taken in a car accident. We lost another student this week. I always talk with the parents in addition to Dr. Shonrock and Dr. Bailey. Families are appreciative of that. We try to prevent those types of things from happening but when you have 28,000 students at that age it is inevitable. Other than that, things are going well and I am proud of Texas and all the publicity we have received from the football program has been excellent—we're number 1 in the top 25 as far as graduation rates and we are number 1 in the Big XII.

Thank you.

President's Report
Texas Tech University
Board of Regents Meeting
December 12, 2008

Dr. Bailey presented his report to the Board: Many of the highlights that were mentioned earlier during the introductions are included in the President's Newsletter. That is a list of accomplishments of our faculty, students and staff. It has been a wonderful fall for us. So many good things happen during a semester and some of those don't get a lot of publicity, but this newsletter lays those out.

A list of all of the media outlets that covered the announcement that we had with Hobbs Bonded Fibers for the Fibertect decontaminate wipe is being distributed. As you can see, there are also a couple of press releases included. This is spectacular media coverage. This is not quite the same publicity as being on ABC several Saturday nights in a row, but still it is significant international coverage. It speaks volumes for what is happening here.

The chancellor mentioned the SACS accreditation. We also had the NCAA accreditation and we were fully accredited there. We have got a great report from them. The American Psychological Association also visited our Clinical Psychology Program. We had terrific report from them. That is a very highly regarded program which was fully accredited. Accreditation is like the offensive line. You are only noticed if there is a mistake. Truthfully, there are a very large number of accrediting agencies who accredit our programs. In virtually every case, we get very high marks. Again, the SACS was very gratifying as well. We are making structural changes that will ensure that problem never occurs again. We will continually assess what is going in our institution, especially our core curriculum. We will try to take that and use that in our budget and planning process as well. If we have to wrap that up every ten years, the best thing to do is to do it on a continuing basis and use it as part of our normal everyday planning.

Some other important academic issues: I had mentioned the grant from the Greater Texas Foundation. We are doing some good things to prepare math and science teachers. Some other awards we won include the Recruitment and Retention Award in Agriculture by members of Tech's Agricultural Sciences and Natural Resources. AgriTexans recruiting group won this year's Excellence in Recruitment and Retention Award. They will receive that award on January 6, 2009 at the National Ag Ambassador Conference in Huntsville. Our meat judging team was once again named as a 2008 National Champion Intercollegiate Meat Judging Team, in Dakota City, Nebraska. We won the beef grading, pork judging, lamb judging, specifications, reasons and total beef divisions and we finished fourth in beef judging and placing divisions. The team is coached by graduate students Jesse Collins and Justin Derington and is supervised by Mark Miller, professor of Meat Science and Muscle Biology. Sometimes we just take for granted how fine our programs are in agriculture, but this reinforces those things.

Another thing to mention, as you are all aware, is that we are doing two searches right now—a provost search and vice president for research. We had two finalists in for the

provost position. We hope to have an announcement made before too long. We are still continuing the vetting of candidates. Either shortly before or after Christmas we should have a provost named. We will continue shortly after the provost selection with the other search. We hope to have finalists for vice president for research sometime in late January or early February. Dr. Stafford is ensuring that we get the best candidates from our pool. We appreciate that work.

Finally, we are always concerned with recruiting the best students and the Cotton Bowl will offer us an opportunity for doing that. After the Cotton Bowl parade, we intend to take advantage of that visibility and have a large-scale student recruiting event. Any of you who would like to be part of that are more than welcome to attend. We are getting alums and the governing board involved with students. Students having the opportunity to meet you would make a significant difference. We will provide you with more details as they become available.

There a couple of other recruiting event partnerships to mention. We are doing some very exciting things with community colleges. Juan had mentioned some things we are doing in South Texas. We have the following events scheduled: On September 18, we had a meeting with Amarillo College. Again, Dr. Stafford was our host. On September 22, we met with South Plains College to firm up our partnerships with them. We are building a gateway program and are trying to expand our articulation agreements. With Cisco Community College, we would appreciate Regent Dueser's help. We have begun initial contact with South Texas College. If you look at where our students are from, the area where we have the most opportunity for growth is in the lower Rio Grande Valley. We have only about 650 students from that area. South Texas College offers us an opportunity for partnerships and for expanding our enrollment with them. Finally, we met with McLennan Community College and we are looking at partnerships we can do there as well. We currently have 47 memorandums of understanding between community colleges and Texas Tech. We'd like to not only expand the number of those partnerships but create more specific articulation agreements. The goal is to have a seamless transition just as we have with South Plains College. In looking at the 100 percent retention and graduation rate, if we do our articulation agreements right, students should be able to transfer here and have a seamless education which will be something we can be proud of.

It has been a wonderful semester and we deeply appreciate your support.

SGA President's Report
Texas Tech University
Board of Regents Meeting
December 12, 2008

Lee Bobbitt presented her report to the Board: Thank you for the opportunity to be here today. We made it through another semester, finals and everything else. We have just a few scratches, but we'll heal from all that and be ready to start a new semester.

A press release is being distributed to the Board from the *Houston Chronicle*. The external vice president, Austin Pennington, and I attended the Summit on Higher Education a couple of weeks ago in College Station. We focused on the legislative session and how we can come together as students from Texas as a whole. It is really important that Texas Tech's students go to Austin to represent our 28,000 student. It was quite an impact representing the 500,000 students the State of Texas has at its universities. We focused on some goals we want to achieve while this session takes place. Some themes that we will focus on are accountability, affordability and accessibility. There are numerous bills in pre-filed legislation and we have looked at those and as we progress throughout the session we are looking at ways that are more promising in helping to push those by contacting our representatives.

Over Thanksgiving, I had the opportunity to travel to Spain and visit the Texas Tech Center in Seville. I had a fabulous time. The students there are learning a tremendous amount and they are getting not only language experience but cultural experience as a whole. Student Regent Kelli Stumbo traveled with us as well. There are 28 students currently enrolled for the fall semester. There will be 80 in the spring. It is important to discuss how important it is to study abroad. We should really encourage our students to do more of that. As someone who has studied abroad, I can personally say that is an excellent program. It is a great thing to do to make you more competitive in the marketplace. It increases the prestige of our students worldwide. That is a fabulous program. Dr. Inglis and his staff are doing a great job.

As Dr. Bailey mentioned, our students deserve praise for their accomplishments. The Ranch Horse team won multiple individual national titles this November at the National Championship. The Livestock Judging team won best team overall for the second consecutive year by a 50 point margin. They weren't just the best; they were well above the rest. The Meat Judging team won their fifth consecutive national title. Congratulations to them. This just proves that we are doing great things at Texas Tech and our students are some of the best.

Thank you for all of your support. We have had a great semester. I can't thank the Board, Chancellor Hance, President Bailey and Dr. Shonrock enough for all you do for Texas Tech.

President's Report
Texas Tech University Health Sciences Center
Board of Regents Meeting
December 12, 2008

Dr. Baldwin stated that the work of the HSC is progressing well. The faculty, students and staff continue to maintain our excellence and to build upon it. In the area of education, all of our programs are thriving and we are in the process of our SACS accreditation. We have submitted our off-site review materials and had a brief visit from the leadership of the committee who will review us formally in the spring. The report was very positive. They did raise some issues about our ability to vouch for the education people have received before coming here which is a somewhat vexing problem that we are confident that we can address sensibly. They also had questions about some of our distance education programs, which are exemplary.

Our research programs continue to grow under the leadership of Dr. Stocco, our EVP of Research. Despite the general climate of the country, our NIH funding continues to rise and our researchers continue to do well across all the campuses.

In clinical care, we continue to do a tremendous amount of service with the people of Texas. That is a important part of our overall program in both teaching and research, but also in terms of our budgetary considerations with our clinical practice generating strong income, which is growing despite the economy and perhaps in large part because of the very strong predominance of government payment for our services from Medicare and Medicaid.

We are recruiting in many areas, but we are very intensively recruiting now for a new dean of Nursing due to the departure of Dr. Alexia Green. We are very anxious to recruit a new associate vice chancellor for development because we have a major gap in terms of leadership and development at the HSC. We are also recruiting for the director of rural health institute named for Marie Hall.

Communications is being re-organized across all eight campuses, and several new hires are facilitating this process. You may remember from Kim Turner's presentation that if you look at our \$610 million budget, just barely 40 percent of it is in Lubbock. Sometimes we forget because Lubbock is our home, how much of the HSC is scattered around our multiple campuses—our eight campuses in this State.

A few words about the Select Commission on Higher Education: the Commission is nearing its final report which will be completed by December 31, 2008. This has been a very gratifying and useful experience for me. The final draft that I have seen reflects a continuing concern that I have about the Texas Tech System broadly as it is perceived within the Commission. I have high hopes for the final report but have just recently submitted my somewhat dissenting view on the final report of the Commission which deals with among other things the issue of Tier 1 or flagship status at universities in Texas. There are several components of thinking about our institution by the

Commission, particularly those held by Commissioner Paredes and some of the representatives on the Commission who represent principally Texas A&M and the University of Texas. They have to do with a growing trend toward emphasis on regionalization which is a euphemism for having major universities in Houston and Dallas. Another area of concern is the issue of not reflecting increases in peer-reviewed funding but rather in trying incurrent relative levels of peer reviewed funding. Another has to do with the recognition of the community impacts and traditions of great universities like Texas Tech in Texas. While this Commission's report may or may not have a great influence on the legislature, it is important for this that it does have the support of the Commissioner, Mr. Paredes and the appointees of the Governor. We have represented ourselves as well as possible. I thank Mike Sanders and Martha Brown for advising me and attending all of the Commission meetings. It has been a challenging experience as the only representative of our System on that Board. Of course, through our elected representatives we may have a better outcome than the report may reflect. I wanted to make you aware of the fact that is coming to a conclusion at the end of this month.

Regent Griffin asked if we are on track for the fall of 2009 for the opening of the Medical School in El Paso.

President Baldwin stated it was. The Medical School in El Paso is almost 40 years old, and we are on track for the first four-year medical students to arrive next fall. We have a very enthusiastic and talented group of applicants as was mentioned in the video, with more than 2500 applicants for the first 40 places in the school.

SGA President's Report
Texas Tech University Health Sciences Center
Board of Regents Meeting
December 12, 2008

Rick Bliss presented his report to the Board: My dad used to say if you can get up every morning and go to work and enjoy what you do then you are doing the right thing. This is what we get to do everyday, so it's a good thing.

I would like to update you on some of what has been going on with the Student Government and the Health Sciences Center. One of the SGA's major goals is community service. In October and November, we have completed over 500 hours of man work for Habitat for Humanity and the Food Bank and various other organizations around Lubbock. I am very proud of that. For most of the students who do a lot of that work, the number one thing on their Christmas list this year is more hours in the day. So, the fact they give quite a bit of time to do this really says a lot about the group that we are working with. I am very impressed with that.

We had our annual holiday reception last Friday. That was a fun event. We collected can goods and money. We collected over \$200 and approximately 500 pounds of food which was donated to the South Plains Food Bank. We get students to donate the cans and the money for admission and we provide food and give out door prizes. Kaplan was gracious enough to give \$1,500 worth of US Medical Licensing Exam prep classes and the Nursing NCLEX prep classes. We got to give away an iPod and Dr. Baldwin donated some basketball tickets. We had some good door prizes for our students.

The SGA has been working closely with Student Services and Business Services at the HSC trying to implement our Direct Deposit Higher One program and getting students involved with that. There will be electronic transfer of student loans starting in January. We have been working with the students to make sure that everyone is on board with that. It has been going well.

The SGA and the Texas Nursing Student Association (TNSA) are involved in welcoming potential candidates for the dean of the School of Nursing. We have student representatives who will meet with each of these candidates over the next few weeks. That is a great opportunity for them to talk with the candidates and ask and answer questions. We are very excited that Nursing School students get to participate in the interview process.

The School of Medicine hosted the regional American Student Association Conference this past weekend. It was extremely successful. There were over 200 registrants. The keynote speakers emphasized rural health and underprivileged areas. There were also clinics on various techniques. They had an intubation clinic and a suture clinic and the Simulation Center comes in handy because people don't like to do sutures on themselves. They had a residency fair and it was a very well done conference.

Thank you.

President's Report
Angelo State University
Board of Regents Meeting
December 12, 2008

Dr. Rallo stated that ASU has had a very busy, productive and dynamic fall.

On December 4, we held a community forum to introduce the public about various building projects that are starting on campus. We think as a good neighbor, people need to understand what is going on and how it will benefit the community from a development perspective and how it will allow ASU to move toward its enrollment goals while soliciting input from the community on how we can mitigate some of issues on traffic and other such issues. It was well attended and well received and we will continue to do that.

On November 7, our College of Education was accepted as a candidate for the College of Ed for NCATE accreditation. We will host a site visit in the spring of 2010. Under the leadership of the provost, we will shortly submit our accreditation request to the College of Business for AACSB. This professional accreditation, which the Board is likely familiar with, is essential in our ability to recruit not just students but also to recruit the types of faculty that we want. We need this accreditation so we can attract individuals of that caliber.

A third thing: our goal is to grow our Honors College by five to ten percent of our student population. As part of that, we will shortly submit our application of Phi Kappa Phi which is the oldest honor society in the nation. As a point of reference, on April 19, UT Arlington became the 300th Phi Kappa Phi chapter.

Finally, our men's basketball team is 6-0. It's our best start to the season in 15 years. As a native New Yorker, I have to mention that our two scorers as well as our leading rebounder all happen to be from New York City.

Thank you and happy holidays to you all.

SGA President's Report
Angelo State University
Board of Regents Meeting
December 12, 2008

Steve Jackson presented his report to the Board.

Chairman Dueser asked him about his experience in running with the bulls in Spain.

Steve replied: "I did run with the bulls last summer in Pamplona, Spain. It was an incredible experience.

"As Dr. Rallo mentioned earlier in his introductions, I am Steven Jackson, vice president of the ASU SGA. This is my first Board of Regents to attend. I appreciate you having me.

"There are three things I would like to discuss that are happening at ASU from the student perspective.

"One, students are becoming a lot more involved. Just this semester, we have added twenty new student organizations. That stems from a new position that was created—a coordinator for student organizations. That is Heather Valle. She has done a really great job in growing that program. These new organizations have become some of our more active organizations in some cases. We are really excited about that.

"Second, you may have heard a bit about *U.S. Today* readership programs going on at universities. We currently have that available in our residency halls. It is something that we have discussed expanding to the entire campus. We decided to go ahead and move forward with that. We are starting a pilot program—a four week pre-program—to see how it will work. That will start in January when the students return for the spring semester. We plan to get some additional funding to make that a semester-long project in order to see how it is received by students and decide if it is something that we want to implement permanently.

"Third, last week the administration hosted a fee workshop for students. This was a chance for students to get on the same page as the administration on proposed fee increases. When student fees are mentioned to students you get a reaction of dread. Students are leery of those types of things, but the workshop was very informative and very honest which was nice. We got a lot of straight answers from the administration and we appreciate that. Generally, students, from those who attended—and that is spreading to other students as well—are starting to realize that in order to maintain the level of service that we are getting now, it is probably time to increase some of those fees. Students understand that.

"Other than that, our students have had a great semester. Our students are doing very well. They are doing even better now that final exams are over."

Regent Griffin asked if Steve would share some of the more significant organizations which had been established.

Steve replied: "We have quite a few more English organizations—one for technical writing. A lot of these have come online in the past month. So, they are just getting started. Another big draw for the student organizations is that a student organization leadership fund is available which provides \$5,000 to every student organization created. It is up to the students to budget that money. Students interested in establishing an organization request funds from that student organization leadership fund to get started."

Regent Griffin stated that was a great jump start for those organizations.