

**TECHNOLOGY  
SUPPORT**

# **PHOTOSHOP -PART I**

**SHORTCOURSE HANDOUT**



Texas Tech University

## Table of Contents

Let's Get Started! .....	3
Open an Image File.....	4
Workspace Tips.....	4
Keyboard Shortcuts .....	4
Image Size, Resolution, and Cropping .....	5
Cropping an Image .....	5
Image Corrections .....	6
Healing Brushes.....	6
Clone Stamp Tool .....	7
Content Aware Fill .....	7
Color Corrections .....	8
Adjustment Layers .....	9
File Formats.....	9
Painting on Layers.....	10
Making Selections & Combining Photos.....	12
Recommended Online Resources:.....	13

# Photoshop – Part I

## ShortCourse Handout

---

Instructor: Joshua Pia

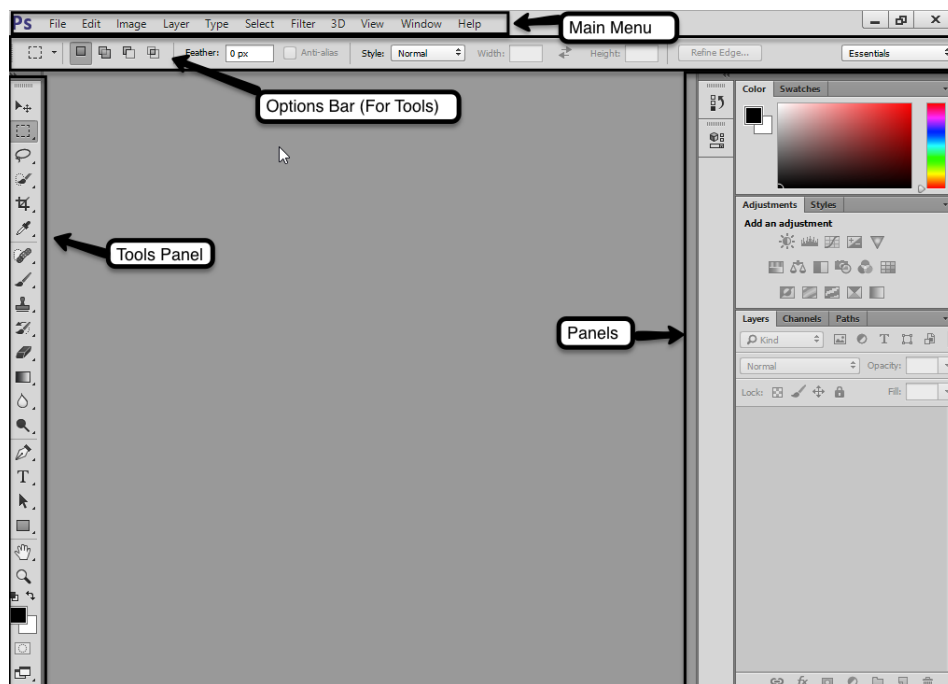
### Topics Covered

- Workspace, Tools and Menus
- Image Size, Resolution and Cropping
- Image Corrections: Healing Brushes, Red Eye Tool, Clone Stamp
- Color Corrections: Brightness & Contrast. Hue, etc.
- Working with Layers
- Combining Photos

### Let's Get Started!

1. Log on to the computer using your **eRaider Username and Password**.
2. Start Photoshop by going to **Start > All Programs > Adobe Photoshop CC 2014**

### Workspace, Tools & Menus



## Open an Image File

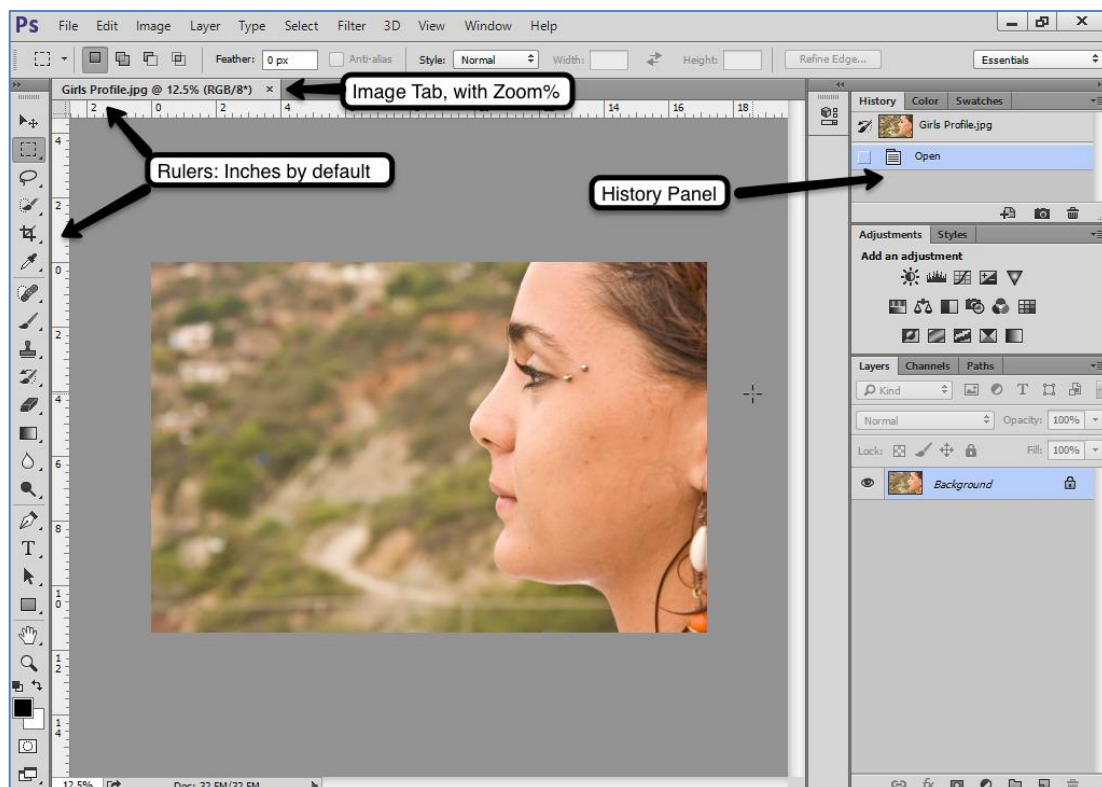
1. In the Main Menu, go to File > Open
2. Navigate to ShortCourses > ShortCourse Materials > Adobe Photoshop
3. Select “**Girls Profile.jpg**” then click on **Open**

## Workspace Tips

- Activate the Image Ruler by going to View>Rulers. Then change to pixels format by right-clicking on the ruler.
- Place the History Panel in the main dock for quick access.

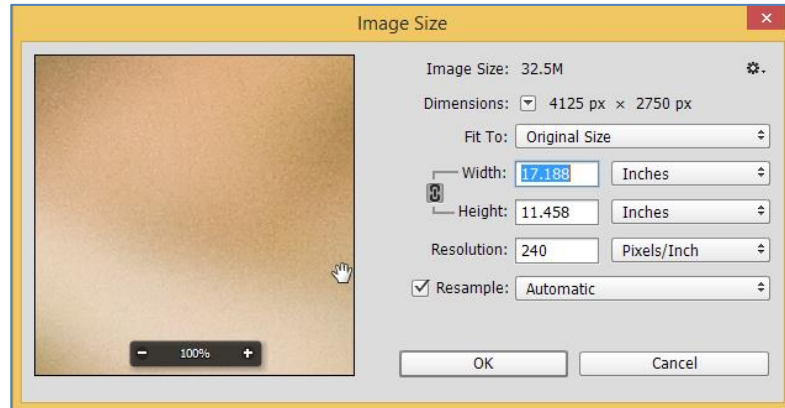
## Keyboard Shortcuts

- Press [**CTRL +**] to zoom in
- Press [**CTRL -**] to zoom out
- Press [**CTRL 0**] to fit the image on the screen
- Hold the [**Spacebar**] to pan around the image



## Image Size, Resolution, and Cropping

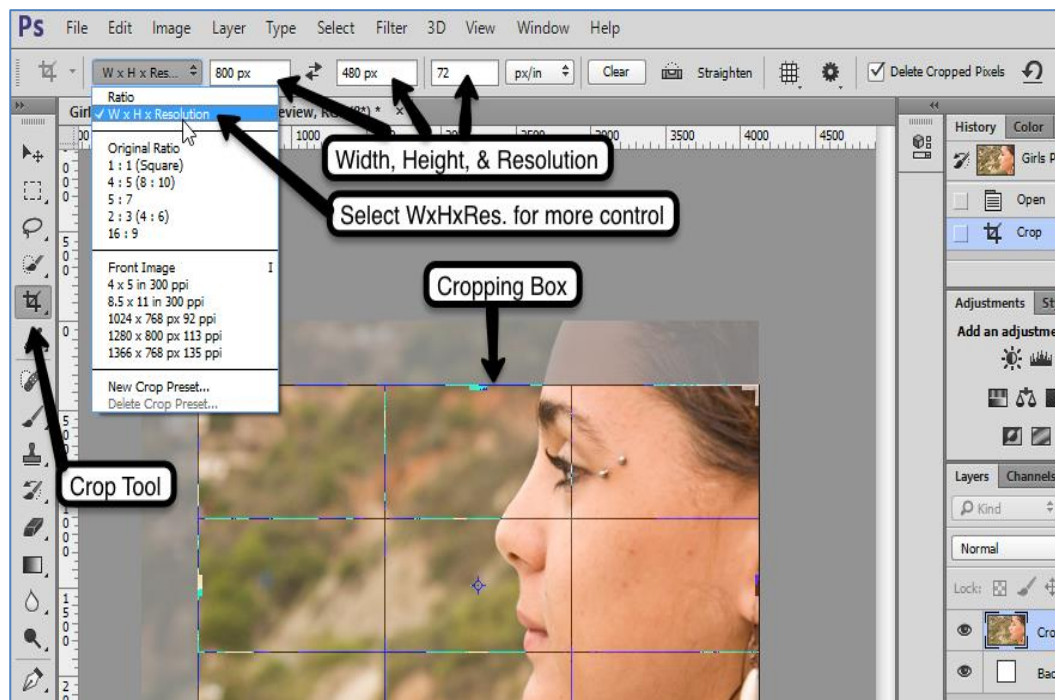
- Go to **Image > Image Size**
- Notice the Document Size and Resolution
  - For **digital**, use 72 pixels/Inch
  - For **print**, use 240 or 300 pixels/inch



### Cropping an Image

The Crop Tool allows us to crop and resize the image simultaneously.

1. Select the Crop Tool from the Tools Panel (left)
2. Use your mouse to draw the cropping box on the image.
3. Press [Enter] on your keyboard to apply the crop.



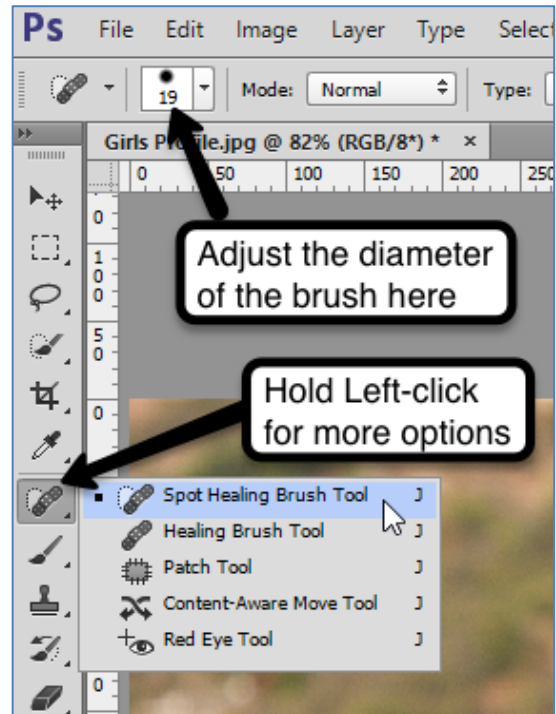
## Image Corrections

### Healing Brushes

**Image File:** Girls Profile.jpg

#### Spot Healing Brush Tool

- Tip: Resize the brush diameter using the bracket keys { and } for larger and smaller
- Tip: Zoom in on the image to get more details
- Just click on the area you want to fix and Photoshop will “blend” the surrounding pixels with the source where you clicked.



### More Healing Tools

#### Healing Brush Tool

- Gives you more control than Spot Healing Brush Tool
- Alt + click to define the source, then paint in longer strokes to blend areas together

#### Patch Tool

Perfect for irregular shapes.

Trace an area using your mouse, then click and drag to a clear area to blend with upon release of the mouse.

**MORE PRACTICE:** Mature Lady.jpg

#### Red Eye Tool

- Image File: Lil Cowboy.jpg
- Select the Red Eye Tool then click on the eyes.

## Clone Stamp Tool

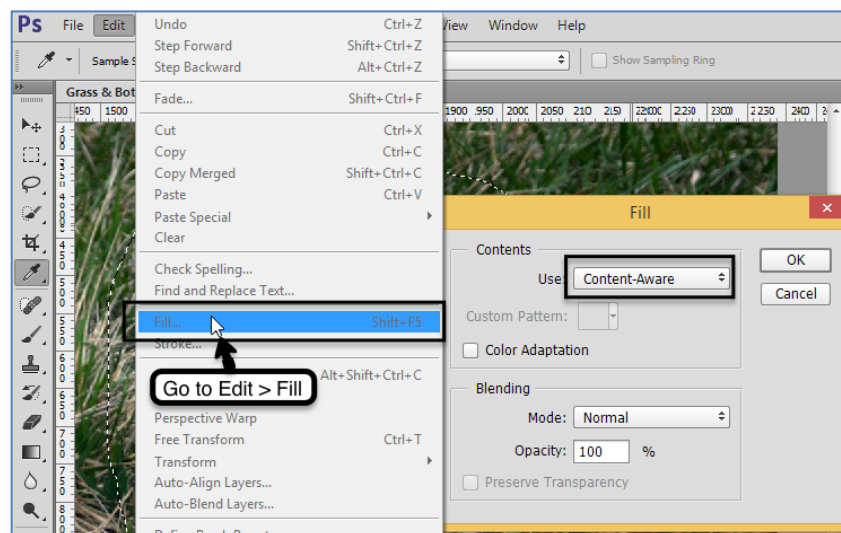
The clone stamp grabs pixels from your source area and copies (clones) them to the area you paint.



- **Image File:** Grass & Bottles.jpg
- Select the Clone Stamp Tool.
- Use the tool options at the top of your screen to adjust the brush size and type OR use your keyboard {[bracket]} keys to quickly increase/decrease the size of the brush.
- Alt + click to set your source on the clear area of grass. This is where the pixels will be copied from.
- Paint over the bottles with your “cloned” pixels.

## Content Aware Fill

There are several ways to make an active selection, for this exercise we will use the Lasso Tool. Then you can fill the selection with a solid color, pattern, or Content Aware fill. Photoshop will look at the rest of your image, and fill in the area. Photoshop is “aware” of the rest of the “content” in your picture. Sometimes this works and sometimes it doesn’t, depending on your image.



## Photoshop – Part I ShortCourse Handout

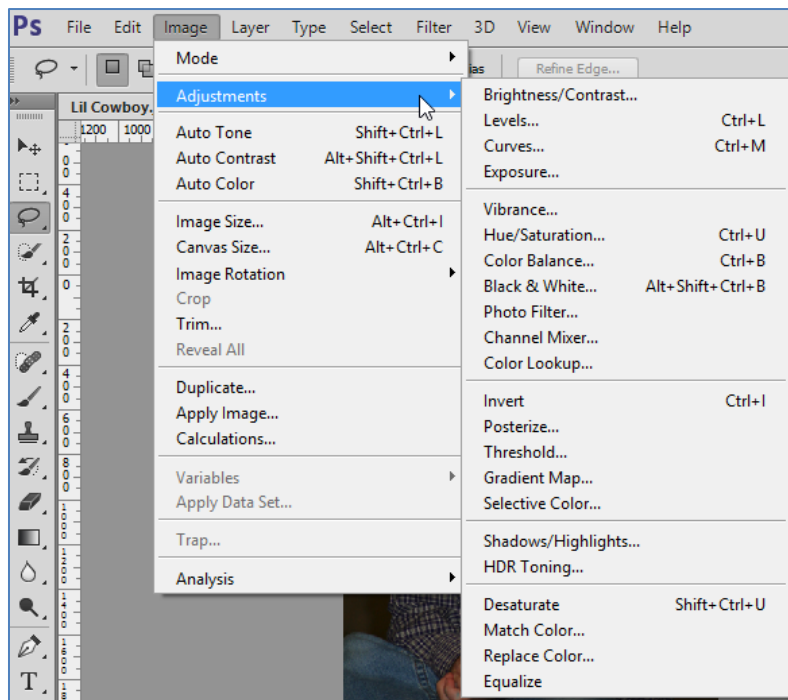
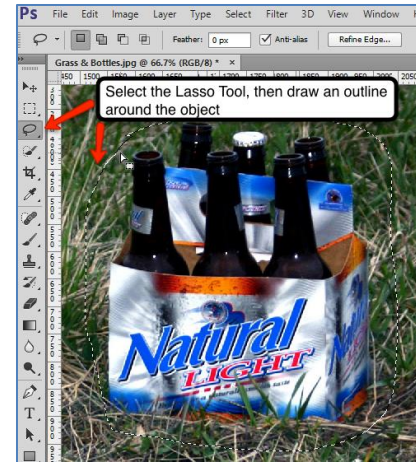
- Use the Lasso Tool to select the bottles
- draw an outline around the area you want to fix.
- The active selection will have a black and white flashing line around it.
- Go to Edit> Fill> and change the setting to Use: Content Aware Fill
- Click OK and decide if you like your result.
- You may have to do this several times.

### MORE PRACTICE: Boat in Water

### Color Corrections

- **Image File:** Lil Cowboy.jpg
- Go to Image > Adjustments
- Select your “adjustment” from the list.

This will be a permanent, one-time change. For Flexible adjustments, see Adjustment Layers below.





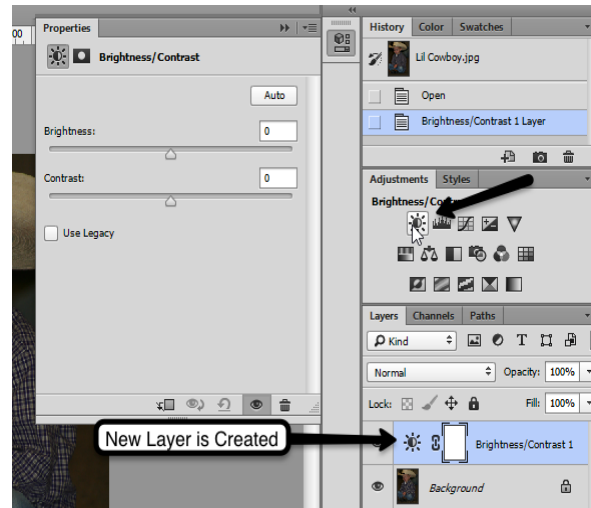
## Adjustment Layers

For non-destructive editing add an Adjustment Layer using one of the following methods:

**Option 1:** In the Adjustments panel click on the corresponding icon of the adjustment you want to make.

*Example:* to add a Brightness/Contrast adjustment

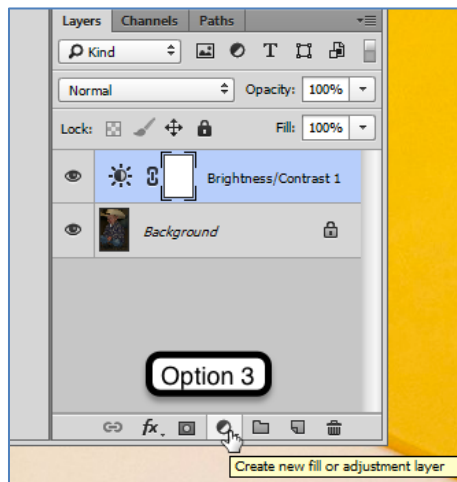
layer, make sure you are active on the correct image layer and click on the Brightness/Contrast symbol in the Adjustments menu.



Use the Properties panel to make changes.

**Option 2:** You can also use the file menu and go to Layer > New Adjustment Layer or

**Option 3:** Click on the Adjustment Layer icon in the Layers panel.



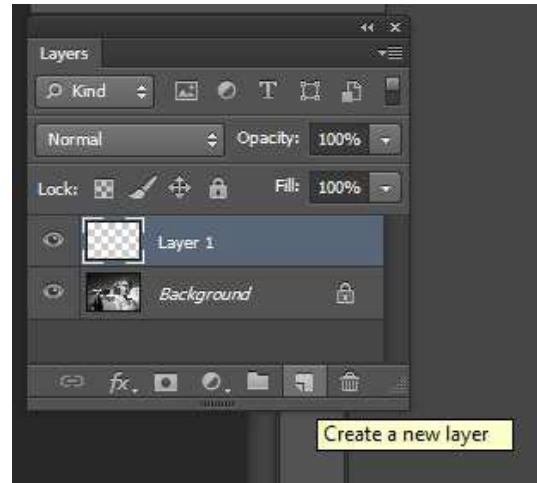
## File Formats


- Save the files in PSD and Web Formats.

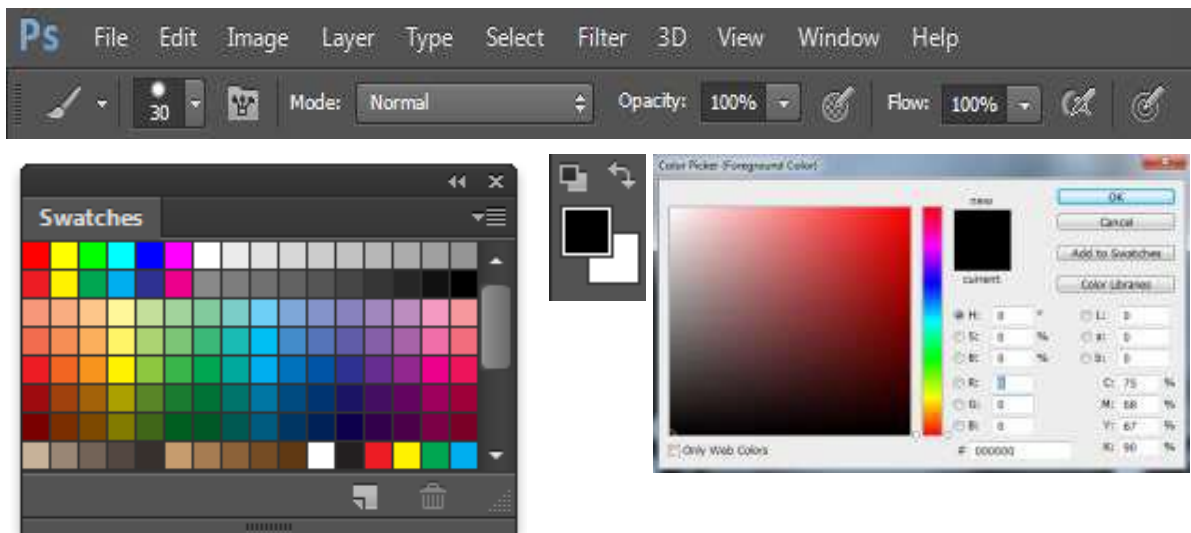
**MORE PRACTICE:** Dark Street Corner

## Painting on Layers

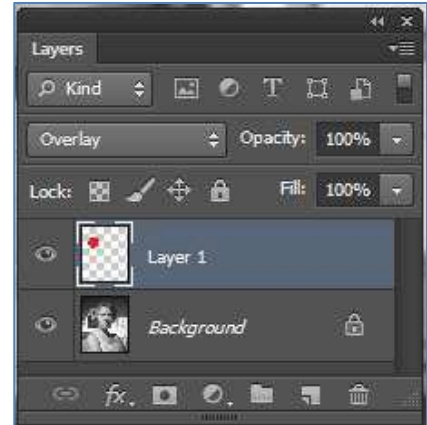
1. Open up the Flower Girl image.
2. Crop the image.
3. Double click on the layer name to unlock the background layer and rename it "Girl."
4. Use an Adjustment Layer Adjustment or Image Adjustment to convert the image to Black and White.
5. Choose the Black and White Preset that works best and click OK.
6. Add a new blank layer on top of your image.



7. Select the Brush Tool. 
8. Use the Control Panel that appears at the top of your screen to make changes to the brush or go to Window > Brush.
9. For this exercise we want a soft round brush.
10. Resize the brush size quickly with the {bracket keys} on your keyboard.
11. Select a color to paint the flower from the Swatches menu (Window > Swatches) or Double click on the Foreground/Background to open up the



12. On the blank layer, paint the area over the flower.
13. Use the Eraser Tool to erase any mistakes.
14. Change the layer blending mode to Overlay.
15. Click the eyeball icon next to the layer thumbnail to turn on and off layer visibility.
16. Save original PSD Photoshop file to preserve your layers and masks.
17. Save as JPG or other format for final use.



Layer 1 visible with Background Layer hidden



Layer 1 hidden with Background Layer visible



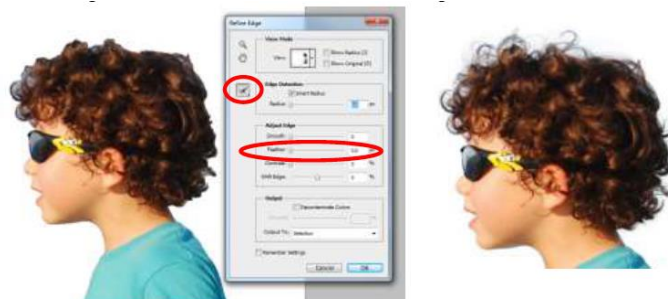
Both Layers visible with Blending mode Overlay

## Making Selections & Combining Photos

1. Go to File> Open> Beach Boy 1 and CTRL Click on Beach Boy 2 and click Open.
2. Use the Quick Selection Tool and CLICK AND HOLD down the mouse button while you slowly expand your selection to include the child's entire profile. This tool adds to your selection by jumping to areas of high contrast.
3. Use the options panel at the top to add/remove parts of the selection.



4. With your active selection, go to the toolbar at the top of your screen click Refine Edge (or go to Select> Refine Edge.)
5. Check the Smart Radius Check Box.
6. Use the edge detection tool to color in around the edges of the hair to refine the selection.
7. Adjust the Feather value to 1-2 pixels depending on your preference. This will smooth the edges so it does not have a blunt edge.



8. Edit> Copy Selection (CTRL+C)
9. Click on the file tab and go to Beach Boy 2 image.
10. Edit > Paste (CTRL+ V)
11. To flip the image, go to Edit> Transform> Flip Horizontal.
12. To resize selection use CTRL T (Edit> Free Transform)
13. Hold the shift key down while resizing to keep in proportion.



**MORE PRACTICE:** Bonsai and Hand

**Recommended Online Resources:**

- **Lynda Video Tutorials:** <http://library.ttu.edu/lynda/>
- **Software Download:** You can download **Adobe Creative Cloud** programs from <https://eraider.ttu.edu>
- **Font Downloads:** <http://www.dafont.com/>
- **Brush and Pattern Downloads:** <http://www.brusheezy.com/>
- **Free Stock Images:** <http://www.freeimages.com/>
- **TTU Identity Guidelines & Logo Usage:**  
<http://www.depts.ttu.edu/communications/identityguidelines/>