



TEXAS TECH UNIVERSITY™



Beef ID

Beef ID



Chuck

Rib

Loin

Round

Flank

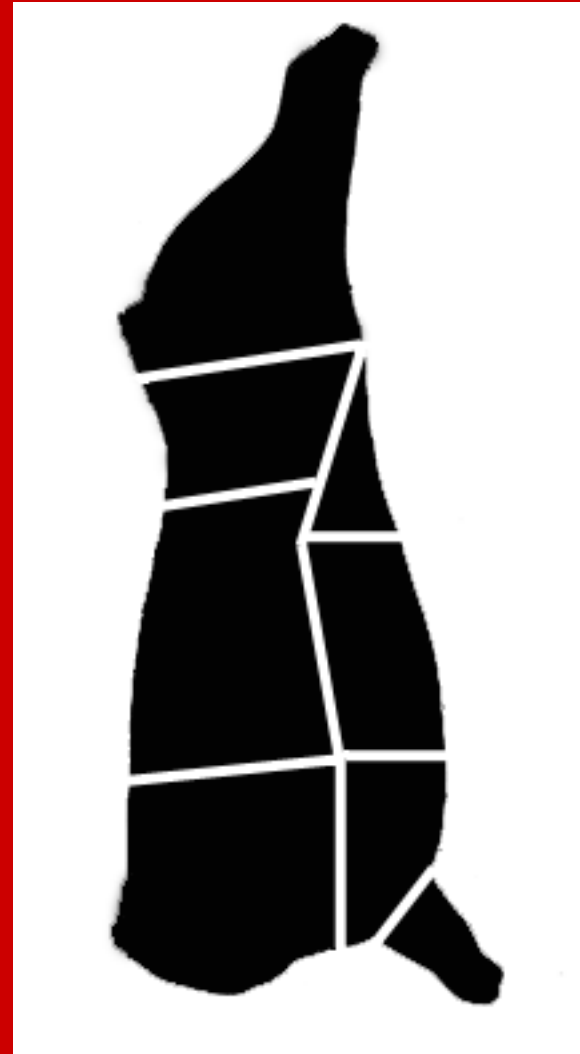
Plate

Brisket

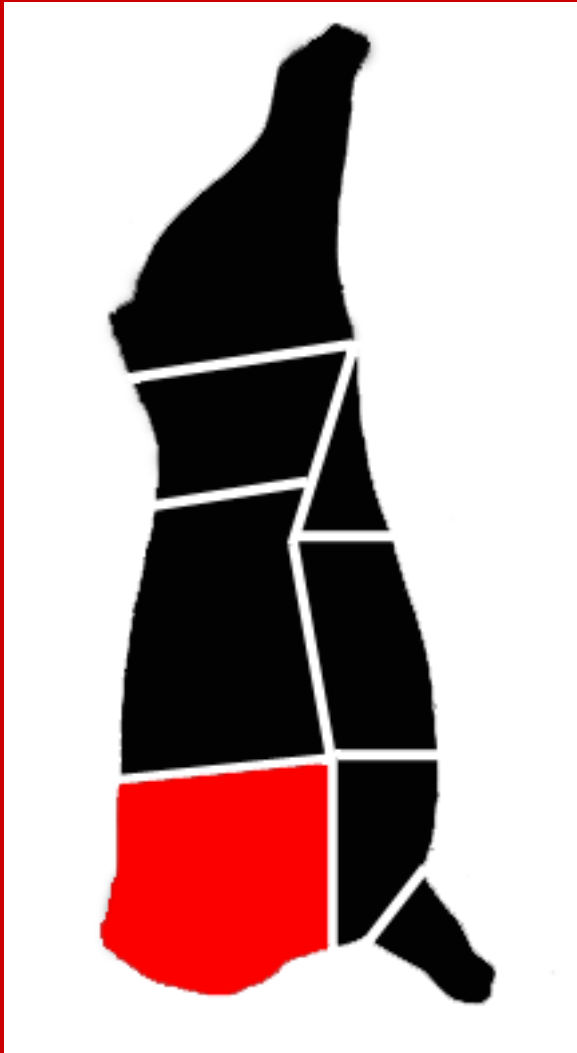
Shank

Various

Variety



Beef ID



Chuck

Chuck | Arm Roast



Chuck | Arm Pot Roast, Boneless



Chuck | Arm Steak



Chuck | Arm Steak, Boneless



Chuck | Blade Roast



Chuck | Blade Steak



Chuck | Chuck Eye Roast (1 of 2)



Chuck | Chuck Eye Roast (2 of 2)



Chuck | Mock Tender Roast



Chuck | Mock Tender Steak



Chuck | Seven (7) Bone Steak



Chuck | Seven (7) Bone Roast



Chuck | Top Blade Steak, Boneless



Beef ID



Rib

Rib | Eye Roast (1 of 2)



Rib | Eye Roast (2 of 2)



Rib | Eye Steak



Rib | Large End Roast (1 of 4)



Rib | Large End Roast (2 of 4)



Rib | Large End Roast (3 of 4)



Rib | Large End Roast (4 of 4)



Rib | Small End Roast (1 of 4)



Rib | Small End Roast (2 of 4)



Rib | Small End Roast (3 of 4)



Rib | Small End Roast (4 of 4)



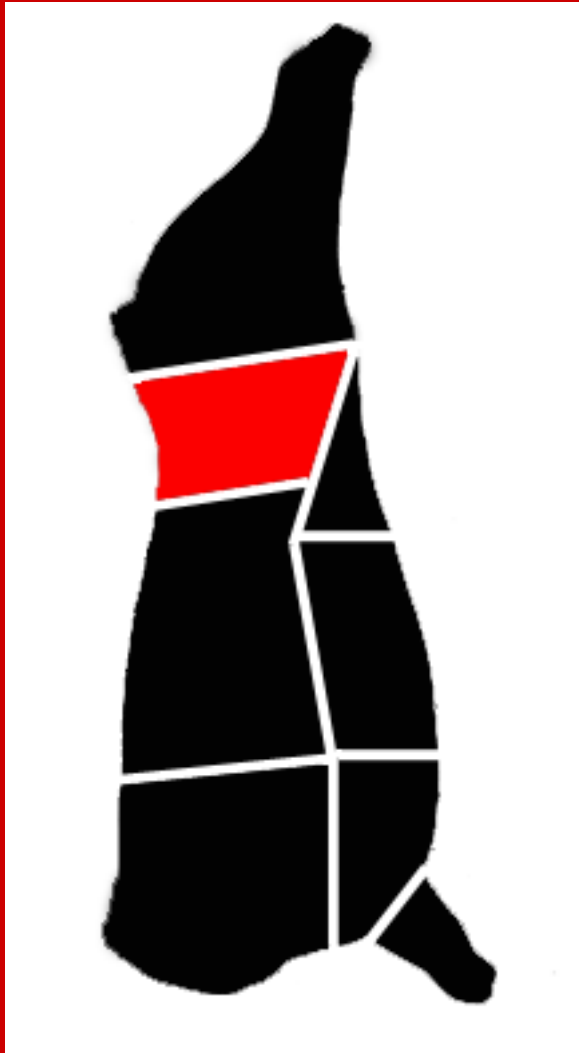
Rib | Small End Steak



Rib | Small End Steak, Boneless



Beef ID



Loin

Loin | Porterhouse Steak



Loin | Sirloin Steak



Loin | Sirloin Steak, Boneless



Loin | Top Sirloin Steak, Boneless



Loin | T-Bone Steak



Loin | Tenderloin Roast (1 of 2)



Loin | Tenderloin Roast (2 of 2)



Loin | Tenderloin Steak



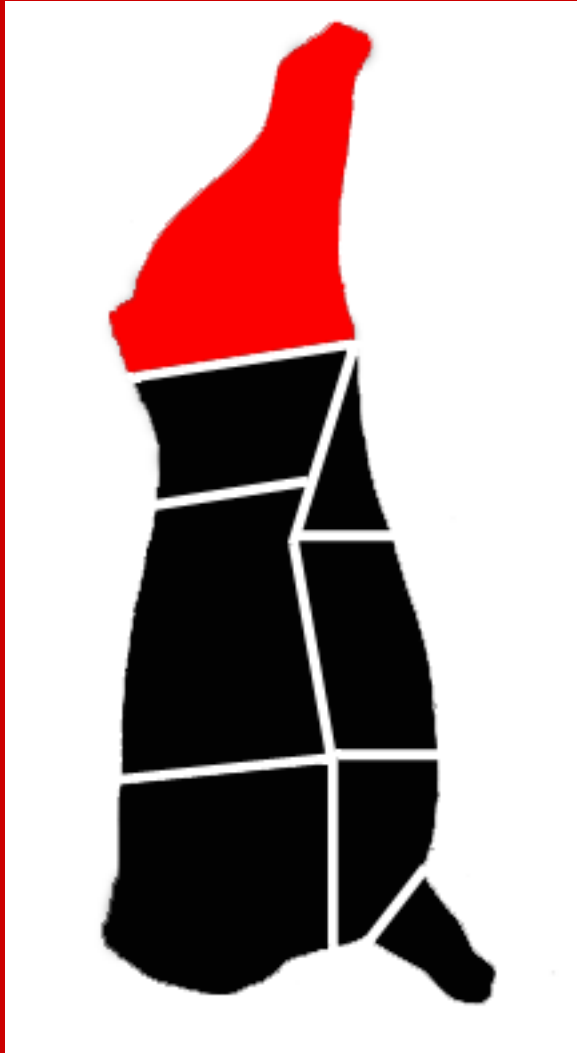
Loin | Top Loin Steak



Loin | Top Loin Steak, Boneless



Beef ID



Round

Round | Bottom Round Roast, Boneless



Round | Bottom Round Rump Roast, Boneless



Round | Bottom Round Steak



Round | Eye Round Roast (1 of 2)



Round | Eye Round Roast (2 of 2)



Round | Eye Round Steak



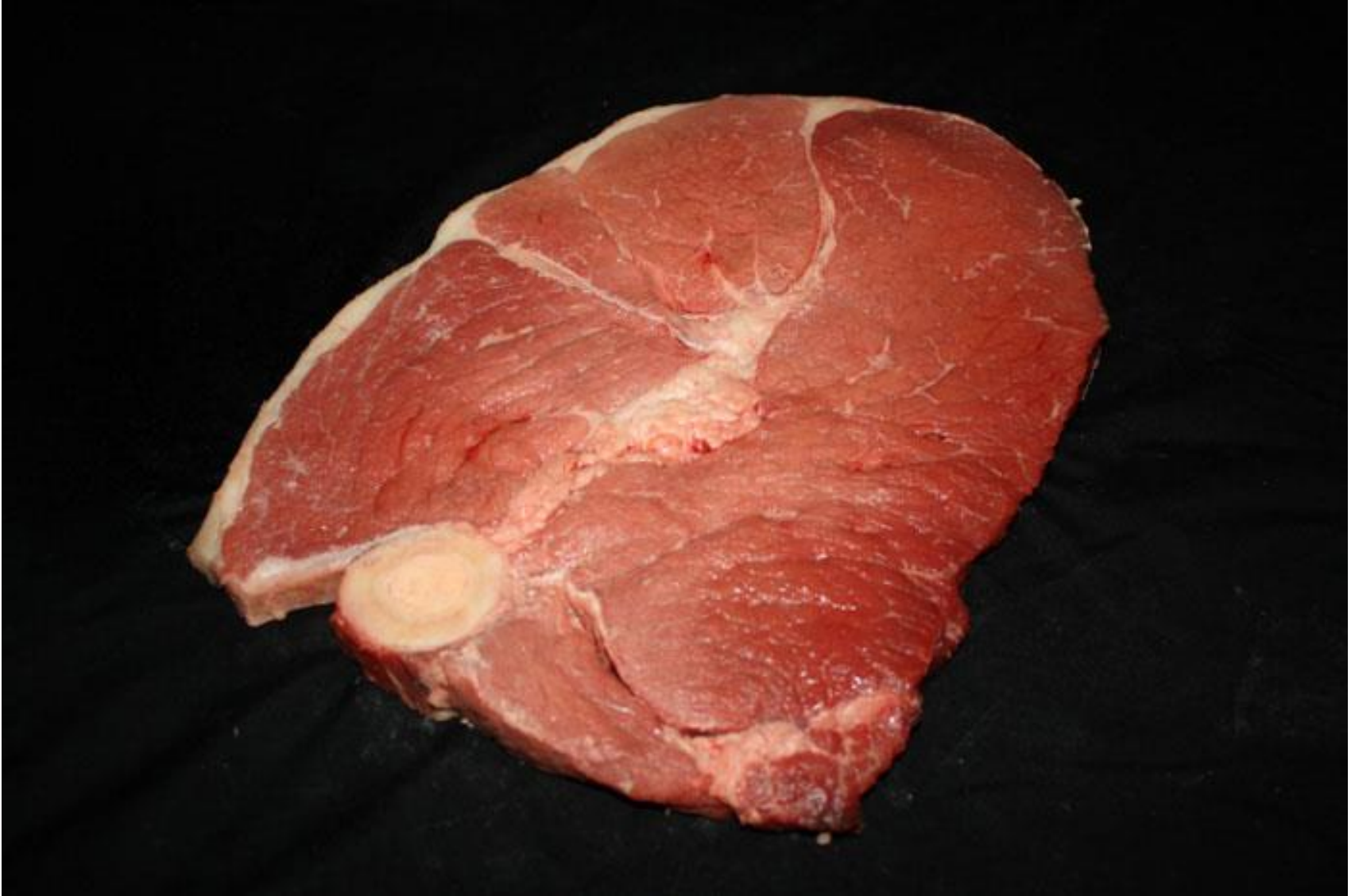
Round | Heel of Round Roast (1 of 2)



Round | Heel of Round Roast (2 of 2)



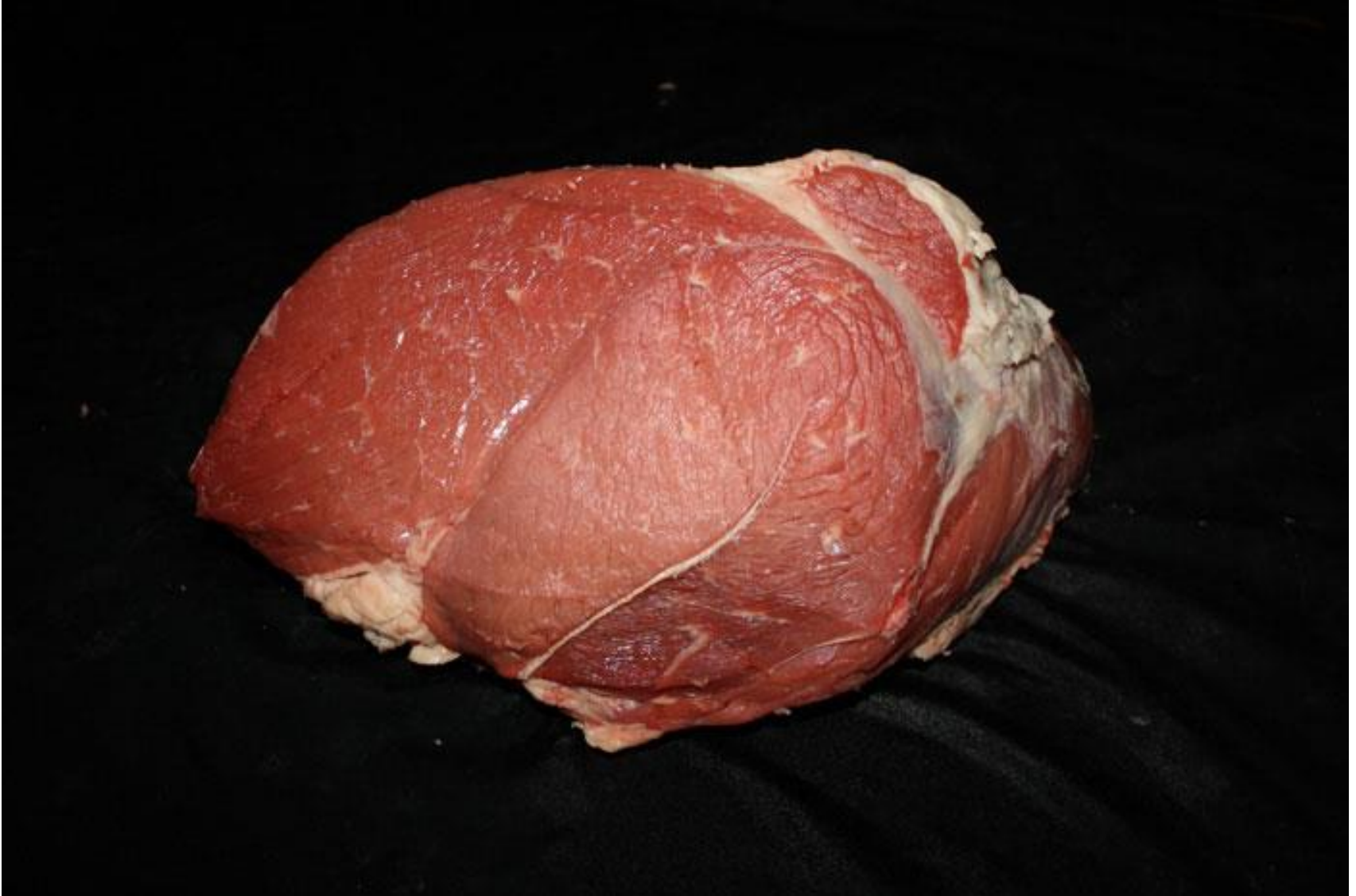
Round | Round Steak



Round | Round Steak, Boneless



Round | Tip Roast



Round | Tip Roast, Cap Off



Round | Tip Steak



Round | Tip Steak, Cap Off



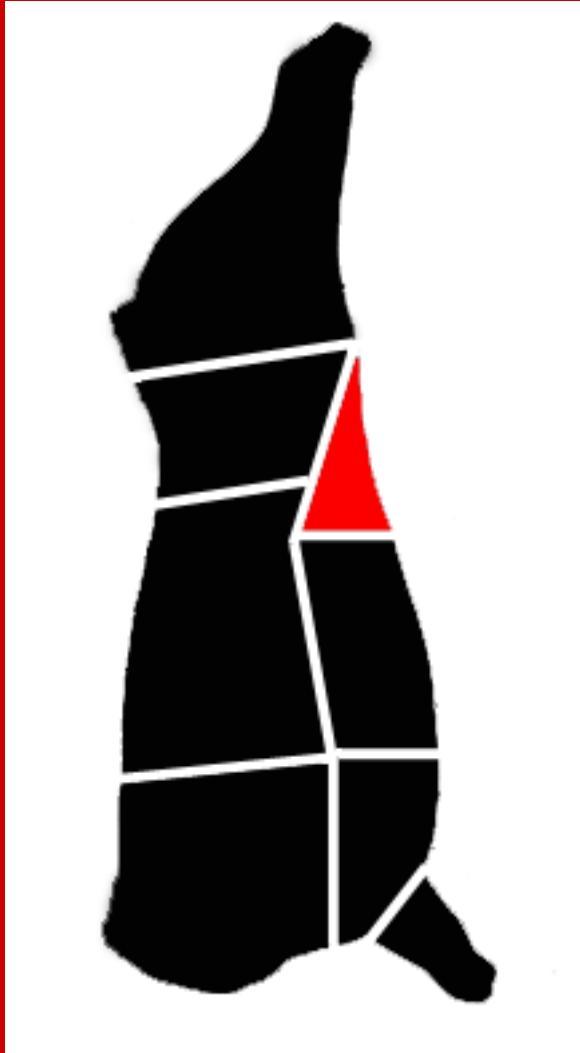
Round | Top Round Roast



Round | Top Round Steak



Beef ID



Flank

Flank | Flank Steak



Beef ID



Plate

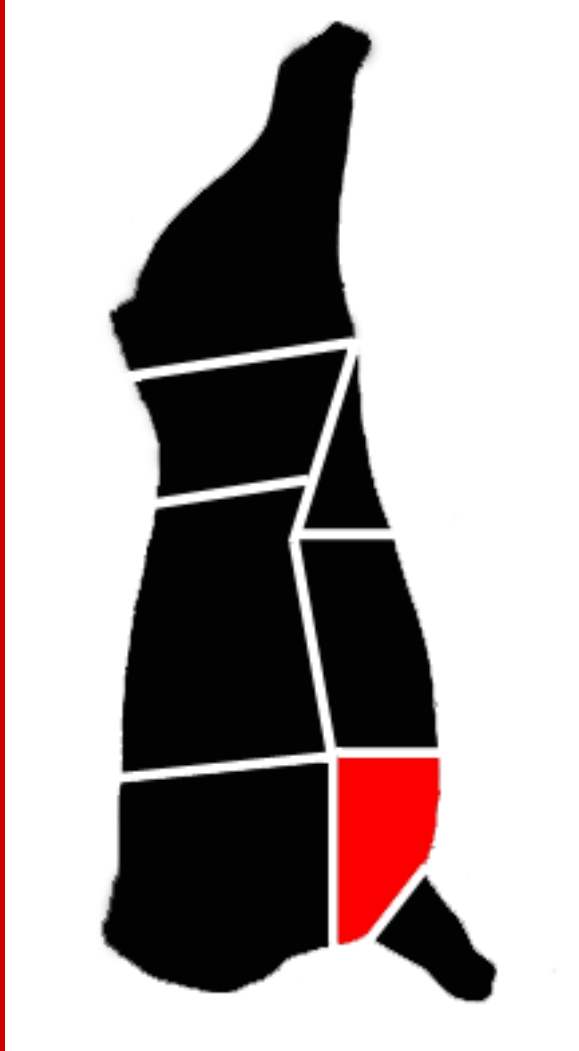
Plate | Short Ribs



Plate | Skirt Steak



Beef ID



Brisket

Brisket | Brisket, Whole



Brisket | Brisket, Corned



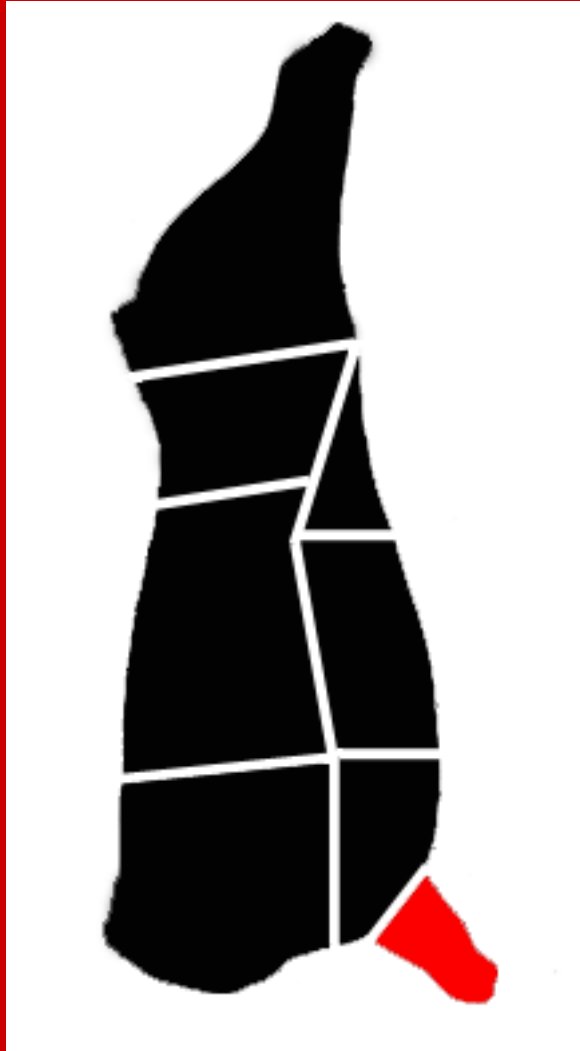
Brisket | Flat Half



Brisket | Point Half



Beef ID



Shank

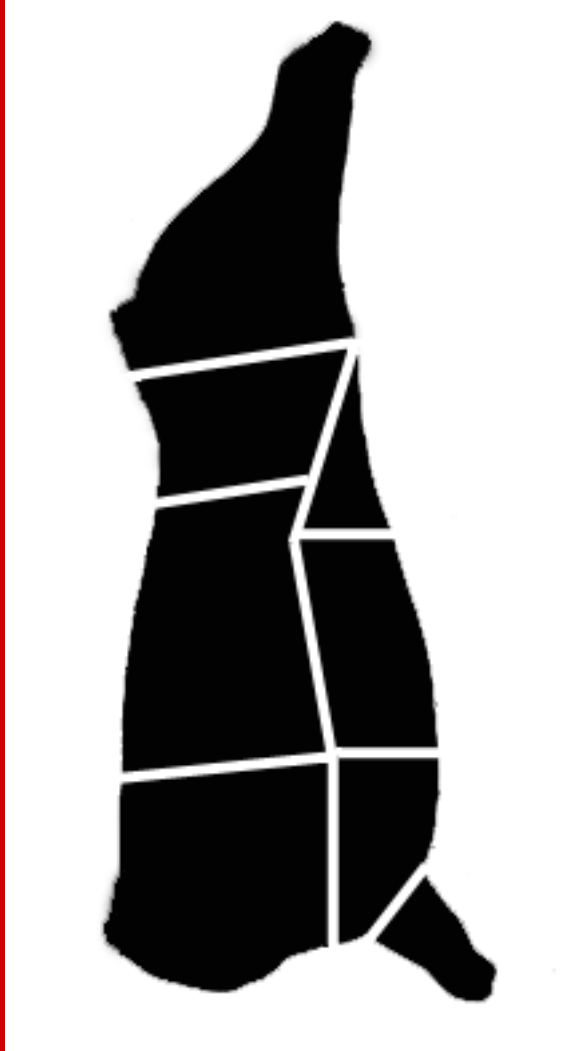
Shank | Cross Cuts



Shank | Cross Cuts, Boneless



Beef ID



Various

Various | Beef for Stew



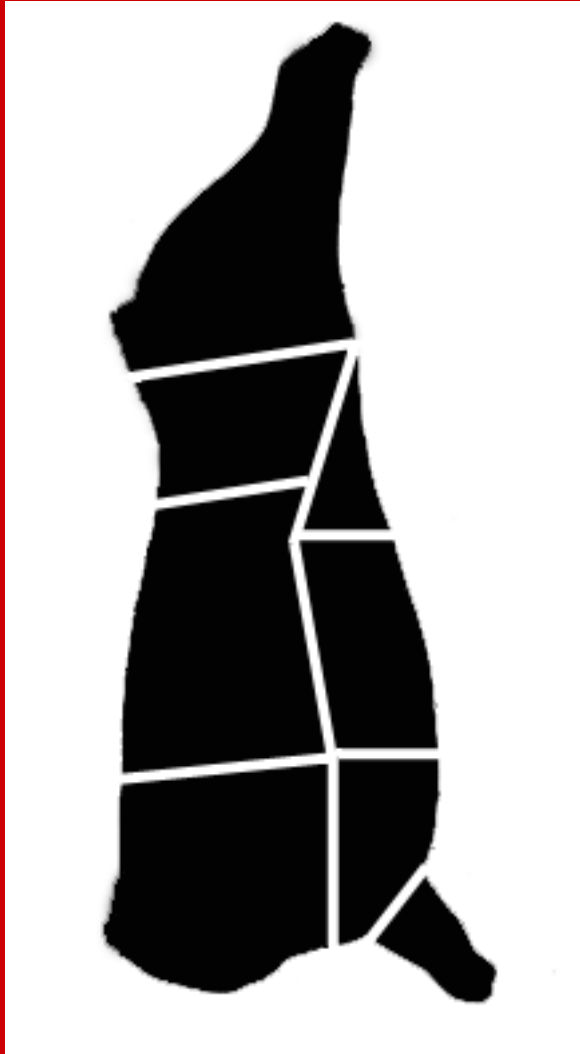
Various | Cube Steak



Various | Ground Beef



Beef ID



Variety

Variety | Heart



Variety | Kidney



Variety | Liver



Variety | Oxtail



Variety | Sweetbread



Variety | Tongue



Variety | Tripe



