

# Family Gallery Guide

## NEWEL CONVERS WYETH

1882-1945

Artist-Illustrator



1.



2.



3.

Selections from the  
**DIAMOND M ART COLLECTION**



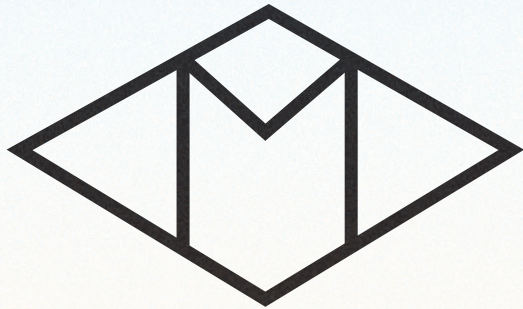
**MUSEUM**  
OF TEXAS TECH  
UNIVERSITY



## THE DONORS

Clarence T. McLaughlin ( mick-lock-lin) and Evelyn Claire Littleton were married in 1921 and had four children: Jean, Evelyn, Ruth, and Mark. After serving in the military during WWI, Clarence (C.T) founded the CoMac Drilling Company in Wichita Falls, TX. The McLaughlins purchased a ranch in Snyder, TX, and named it The Diamond M. They had such a passion for collecting that they turned the Diamond M office building (in Snyder) into the official “Diamond M Museum.” In the early 1990s, the Museum closed and the collection was donated to the Museum of Texas Tech University.

\* Adapted from gallery text by Dr. Peter Briggs.



N.C. Wyeth painted pictures of “stories”.

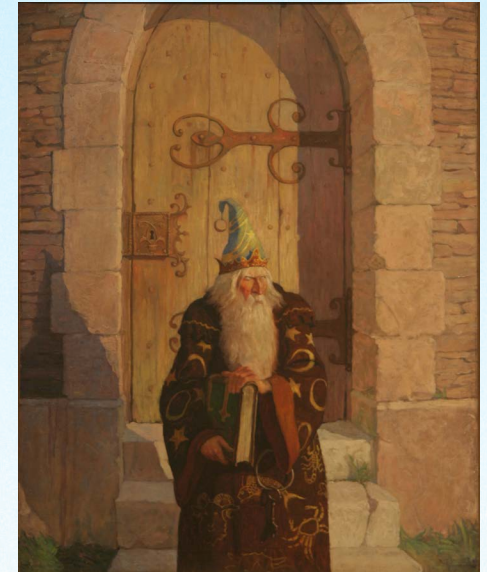
What would you paint? \_\_\_\_\_

What is your favorite thing about a museum? \_\_\_\_\_

Pretend that you could take art lessons from N.C. Wyeth; what would you want him to teach you? \_\_\_\_\_

## THE ASTROLOGER

This illustration is from *The Mysterious Stranger: A Romance* by Mark Twain. Twain never actually finished this novel; his biographer, Albert Bigelow Paine, finished the novel and introduced the astrologer. Astrology is a form of pseudoscience (fake science) based on the belief in a relationship between events in the sky and events on earth. Many cultures have developed elaborate methods using astrology to predict events. You may know astrology better as horoscopes, which predict your behavior and upcoming events based on the location of the sun, moon, and stars at your birth.



Newell Convers Wyeth On the Fourth Day Comes the Astrologer from His Crumbling Old Tower, 1916  
Oil on canvas

### FUN FACT

Mark Twain's real name was Samuel Clemens.

What can you tell us about this man? \_\_\_\_\_

Where do you think he is? \_\_\_\_\_

What are the images on his robe? \_\_\_\_\_

What time period do you think he lives in? \_\_\_\_\_



# FOOTBALL

This painting served as one of three illustrations for *The Boys of St. Timothy's*, written by Arthur Stanwood Pier. This painting is painted with black, grey, and white colors because black and white reproductions in magazines and other publications were easier (and less expensive) to print. This book was the first one illustrated by Wyeth and touched on life in boarding school, including sports.

American football was created in the late 19th century by combining early versions of rugby and soccer and can also be dangerous.

How is this painting like a photograph? How is it different?

---

---

What do paintings tell us that photographs do not?

---

---

What clues tell you that the scene in the painting is from the past?

---

---

How is the title revealed in the painting?

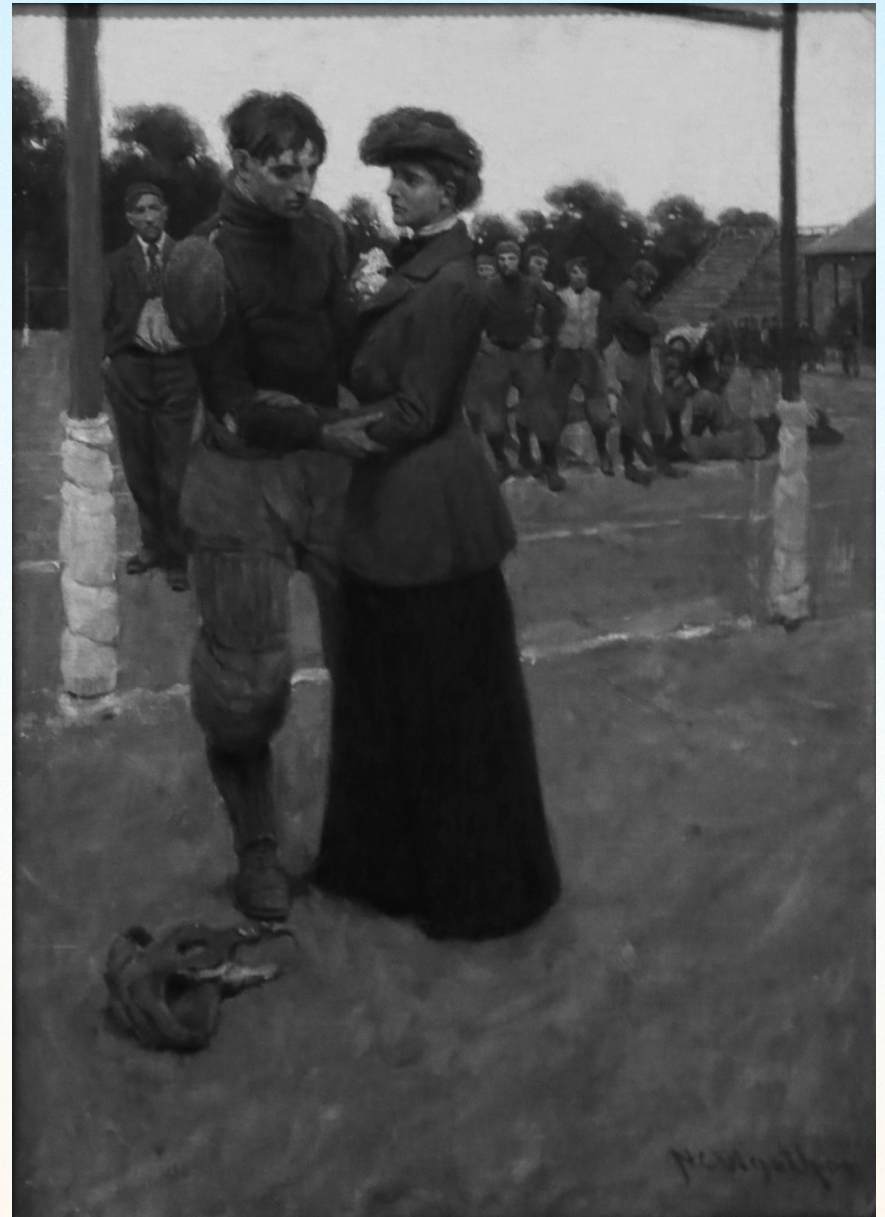
---

---

What other title can you write to go with this painting?

---

---



Newell Convers Wyeth, "Oh, Randolph", she cried, "I cannot have you play that game any more!", 1904, Oil on canvas



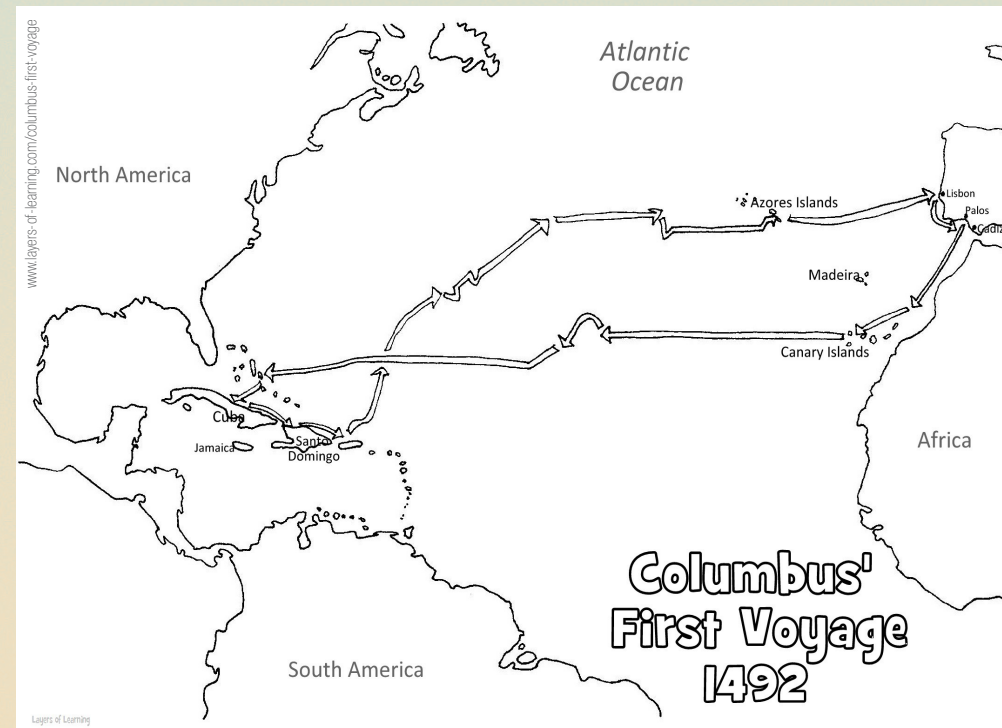


Newell Convers Wyeth, The Landing of Columbus, 1935, Oil on canvas

# CHRISTOPHER COLUMBUS

Christopher Columbus, born sometime between October 31, 1450 and October 30, 1451, was an Italian explorer. He completed four voyages across the Atlantic Ocean for the Spanish monarchy. Columbus proposed to reach the East Indies by sailing westward but actually landed on islands off the coast of Central America.

COLOR COLUMBUS' FIRST VOYAGE MAP BELOW!



Can you list 3 ways that Wyeth made the subject of the painting appear important? \_\_\_\_\_

Who is an important person in your life that you would like to highlight in a painting? \_\_\_\_\_



# POETRY IN PICTURES

N.C. Wyeth's illustrations were not only used for novels, but they were also used to depict scenes from poems.

Newell Convers Wyeth  
Miles Standish, 1929  
Oil on canvas



## EXCERPT FROM "THE COURTSHIP OF MILES STANDISH" BY HENRY WADSWORTH LONGFELLOW:

*Then stood Pecksuot forth, self-vaunting, insulting Miles Standish:  
While with his finger he petted the knife that hung at his bosom,  
Drawing it half from its sheath, and plunging it back, as he muttered,  
"By and by it shall see; it shall eat; ah, ha! but shall speak not!  
This is the mighty Captain the white men have sent to destroy us!  
He is a little man; let him go and work with the women!"*

Which character is Pecksuot? \_\_\_\_\_

\_\_\_\_\_

Which character is Miles Standish? \_\_\_\_\_

\_\_\_\_\_

Why are they fighting? \_\_\_\_\_

\_\_\_\_\_

How does the artist show the tension between the two men?

\_\_\_\_\_

Do you like how N.C. Wyeth interpreted and illustrated this scene?

\_\_\_\_\_

# NOW IT'S YOUR TURN!

Read the poem below, and try your hand at illustrating what is being said in the poem.

## EXCERPT FROM THE POEM "JIM BLEDSO OF THE PRAIRIE BELLE" FROM JOHN HAY'S BOOK OF POETRY, *THE PIKE COUNTY BALLADS*:

*He weren't no saint,--them engineers  
Is all pretty much alike,--  
One wife in Natchez-under-the-Hill  
And another one here, in Pike;  
A keerless man in his talk was Jim,  
And an awkward hand in a row,  
But he never flunked, and he never lied,--  
I reckon he never knowed how.*

## NEXT TIME YOU ARE AT THE MUSEUM:

Find the painting: Newell Convers Wyeth, He weren't no saint,--them engineers Is all pretty much alike, 1912, Oil on canvas

How does your illustration compare to N.C. Wyeth's illustration of this poem?



# N.C. WYETH

Newell Convers Wyeth (October 22, 1882 – October 19, 1945), better known as N.C. Wyeth, was an American artist and became a great illustrator. Wyeth went on to create over 3,000 paintings and illustrated over 112 books. His illustrations can be seen in such classics as *Treasure Island*, *The Mysterious Island*, *The Last of the Mohicans*, and *Robinson Crusoe*. His illustrations were created so that the stories came to life. As beautiful as his paintings are, Wyeth believed he was a failure because he was an “illustrator” and not an “artist”!

Are illustrations fine art? \_\_\_\_\_

An **illustration** is a visualization or a depiction of a subject made by an artist, such as a drawing, sketch, painting, photograph, or other kind of image of things seen, remembered, or imagined using a graphical representation. The word comes from the latin word illustra'tio, illu'stro meaning enlighten, or irradiate.

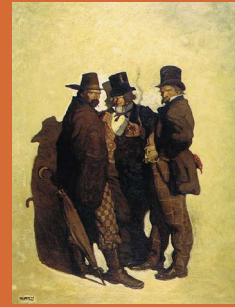
**Fine art** is creative art, especially visual art, whose products are to be appreciated primarily or solely for their imaginative, aesthetic, or intellectual content.

The definition of illustration is given above, but how would you define illustration? \_\_\_\_\_

The definition of fine art is given above, but how would you define art? \_\_\_\_\_

What makes someone an artist? \_\_\_\_\_

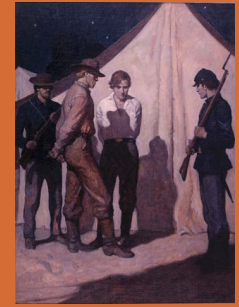
Do you think Wyeth's illustrations can be considered “fine art”? \_\_\_\_\_



A



B



C



D



E

## READING ROOM

### MATCH TITLES TO PICTURES

1. “The Old Philosopher” \_\_\_\_\_
2. “The Pike County Ballads” \_\_\_\_\_
3. “The Last of the Mohicans” \_\_\_\_\_
4. “The Rescue of Captain Harding” \_\_\_\_\_
5. “The Little Shepherd of Kingdom Come” \_\_\_\_\_

ANSWERS:  
1. E, 2. A,  
3. B, 4. D,  
5. C

### On this page:

N.C. Wyeth  
Two prisoners, sir.  
We captured 'em  
with Daws Dillon,  
1930-31  
Oil on canvas  
[on exhibit]

N.C. Wyeth  
The Rescue of  
Captain Harding,  
1918  
Oil on canvas

N.C. Wyeth  
Uncas Slays a Deer,  
1919  
Oil on canvas

N.C. Wyeth  
The Pike County  
Ballads,  
1912  
Oil on canvas

N.C. Wyeth  
His queer shabby  
clothes, his big  
stooping frame,  
his sad black eyes,  
absent almost to  
vacancy,  
1910  
Oil on canvas

# CHECK IT OUT!

TO FIND OUT MORE ABOUT NC WYETH PLEASE VISIT:

[www.biography.com/people/nc-wyeth-9538189](http://www.biography.com/people/nc-wyeth-9538189)

## *Further Reading and Movies*

**SEVERAL OF THESE BOOKS HAVE BEEN TURNED INTO MOVIES.  
CHECK OUT THE LIST BELOW!**

The Mysterious Island by Jules Verne published in 1874.

Journey to the Mysterious Island (2012)

Jules Verne's Mysterious Island (2012)

The Last of the Mohicans by James Fenimore Cooper

The Last of the Mohicans (1992)

The Odyssey by Homer

The Odyssey (miniseries 1997)

## ON THE COVER

1. N.C. Wyeth

The Courier of the Air,  
1918  
Oil on canvas

2. N.C. Wyeth

Uncas Slays a Deer,  
1919  
Oil on canvas

3. N.C. Wyeth

The Pike County  
Ballads,  
1912  
Oil on canvas



**MUSEUM**  
OF TEXAS TECH  
UNIVERSITY

3301 4<sup>th</sup> Street

Lubbock, TX 79409-3191

806.742.2432

Email: [Museum.education@ttu.edu](mailto:Museum.education@ttu.edu)

[www.museum.ttu.edu](http://www.museum.ttu.edu)