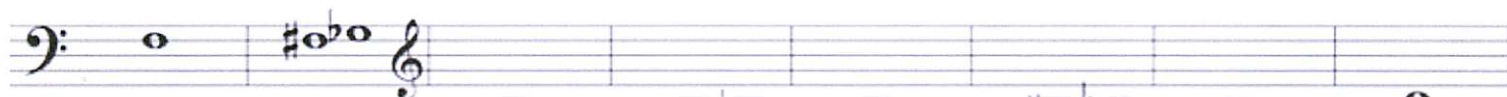
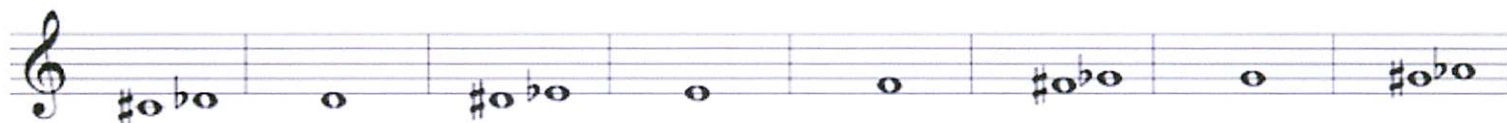


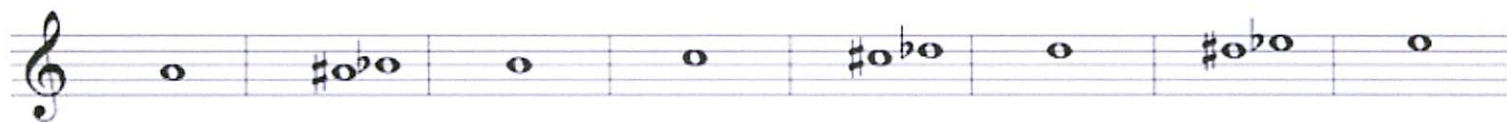
Marching Horn/Mellophone Fingering Chart



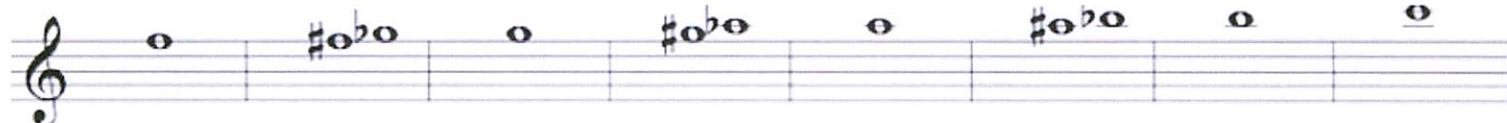
Bb horn: O	123	13	23	12	1	2	O
Mello:	123	13	23	12	1	2	O



Bb horn: 23	12	1	2	O	12	1	23
Mello: 123	13	23	12	1	2	O	23



Bb horn: 12	1	2	O	23	12	1	2
Mello: 12	1	2	O	12	1	2	O



Bb horn: O	2	O	23	12	1	2	O
Mello: 1	2	O	23	12	1	2	O

Shown in **RED** are fingerings which differ markedly from concert horn fingerings.

GOIN' BAND TRADITIONAL MUSIC EXCERPTS

Horn in F

FIGHT RAIDERS FIGHT

$\text{♩} = 152$

Musical notation for 'FIGHT RAIDERS FIGHT' in F major, 2/4 time. The piece starts at measure 9. The first staff contains chords: G4, F4, G4, G4, G4, G4, G4, G4. The second staff contains a melody: G4, A4, B4, C5, B4, A4, G4, F4. The third staff contains a melody: G4, A4, B4, C5, B4, A4, G4, F4. The piece ends with a double bar line and a 2/4 time signature.

FANFARE - MATADOR SONG

17 $\text{♩} = 104$

Musical notation for 'FANFARE - MATADOR SONG' in F major, 2/4 time. The piece starts at measure 17. The notation includes various rhythmic values such as eighth and sixteenth notes, and rests. The piece ends with a double bar line and a 2/4 time signature.

GRANDIOSO EXCERPT

26 $\text{♩} = 104$

Musical notation for 'GRANDIOSO EXCERPT' in F major, 6/8 time. The piece starts at measure 26. The notation includes various rhythmic values such as eighth and sixteenth notes, and rests. The piece ends with a double bar line.

Musical notation for 'GRANDIOSO EXCERPT' in F major, 6/8 time. The piece starts at measure 32. The notation includes various rhythmic values such as eighth and sixteenth notes, and rests. The piece ends with a double bar line.

Musical notation for 'GRANDIOSO EXCERPT' in F major, 6/8 time. The piece starts at measure 40. The notation includes various rhythmic values such as eighth and sixteenth notes, and rests. The piece ends with a double bar line.

Musical notation for 'GRANDIOSO EXCERPT' in F major, 6/8 time. The piece starts at measure 46. The notation includes various rhythmic values such as eighth and sixteenth notes, and rests. The piece ends with a double bar line and a '2' indicating a second ending.