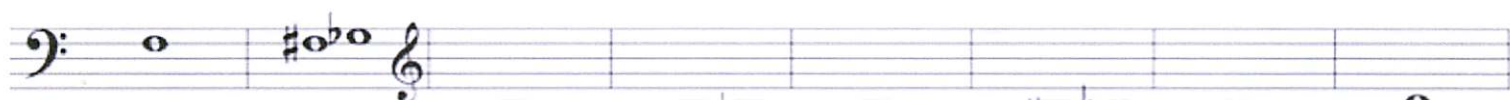
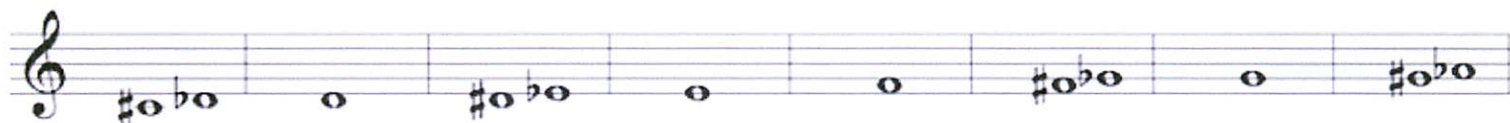


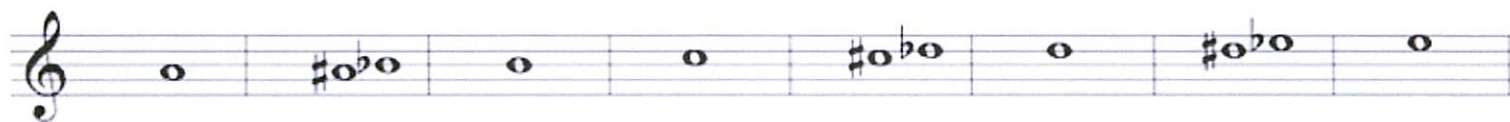
# Marching Horn/Mellophone Fingering Chart



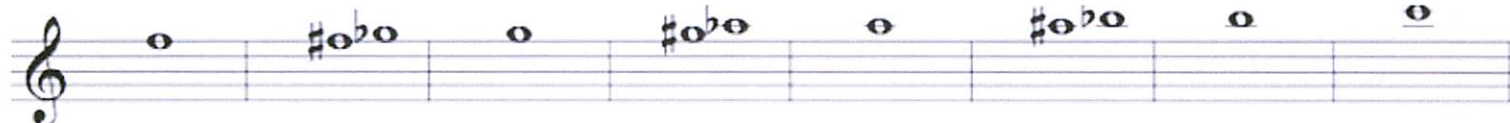
Bb horn: O	123	13	23	12	1	2	O
Mello:	123	13	23	12	1	2	O



Bb horn: 23	12	1	2	O	12	1	23
Mello: 123	13	23	12	1	2	O	23



Bb horn: 12	1	2	O	23	12	1	2
Mello: 12	1	2	O	12	1	2	O



Bb horn: O	2	O	23	12	1	2	O
Mello: 1	2	O	23	12	1	2	O

Shown in **RED** are fingerings which differ markedly from concert horn fingerings.

# GOIN' BAND TRADITIONAL MUSIC EXCERPTS

Horn in F

## FIGHT RAIDERS FIGHT

$\text{♩} = 152$

Musical notation for 'FIGHT RAIDERS FIGHT' in F major, 2/4 time. The piece starts at measure 9. The first staff contains chords: G4, F4, G4, G4, G4, G4, G4, G4. The second staff contains a melody: G4, A4, B4, C5, B4, A4, G4, F4. The third staff contains a melody: G4, A4, B4, C5, B4, A4, G4, F4. The piece ends with a double bar line and a 2/4 time signature.

## FANFARE - MATADOR SONG

17  $\text{♩} = 104$

Musical notation for 'FANFARE - MATADOR SONG' in F major, 2/4 time. The piece starts at measure 17. The notation includes various rhythmic values and accents. The piece ends with a double bar line and a 2/4 time signature.

## GRANDIOSO EXCERPT

26  $\text{♩} = 104$

Musical notation for 'GRANDIOSO EXCERPT' in F major, 6/8 time. The piece starts at measure 26. The notation includes various rhythmic values and accents. The piece ends with a double bar line.

Musical notation for 'GRANDIOSO EXCERPT' in F major, 6/8 time. The piece starts at measure 32. The notation includes various rhythmic values and accents. The piece ends with a double bar line.

Musical notation for 'GRANDIOSO EXCERPT' in F major, 6/8 time. The piece starts at measure 40. The notation includes various rhythmic values and accents. The piece ends with a double bar line.

Musical notation for 'GRANDIOSO EXCERPT' in F major, 6/8 time. The piece starts at measure 46. The notation includes various rhythmic values and accents. The piece ends with a double bar line and a '2' indicating a second ending.

F. Horn

Horn Audition

Play letter E to the end.

Moderate Funk  $\text{♩} = 108$

4 A 3 f 2 A9 3

17 f B

26 B9

36 C ff ffz ff accel. ff p

44 D 4 ffz ff accel. ff p

Up-Tempo Motown  $\text{♩} = 138$

56 Straight 8th's E p ff ffz ff f p f

F. Horn

Horn Audition

Musical score for F. Horn, Horn Audition, measures 64-72. The score is written in treble clef with a key signature of two flats (B-flat and E-flat) and a common time signature. The music features dynamic markings of *mf* (mezzo-forte) and *ff* (fortissimo), and includes articulation marks such as accents and slurs. A trill is indicated by a '3' under a note in measure 66. Boxed letters 'F' and 'G' are placed above notes in measures 65 and 71, respectively, likely indicating fingerings. The piece concludes with a double bar line in measure 72.