



Texas Tech University Band & Orchestra Camp

Cello Audition Materials (2019)

For each of the categories below, please prepare and perform the scale/etude/and orchestral excerpt that BEST DEMONSTRATES your current ability level.

****Please consult your orchestra teacher and/or private lesson instructor to help guide you.*

Section I: Scales

Section II: Short Excerpt from a prepared solo

Section I: Scales

You will be asked to perform one or two scales in your audition. Please select those that best demonstrate your current abilities.

The listed options are merely suggestions and two scales are provided for each performance level to assist in your selection.

Developing Level

Scales: 1-2 octaves (major or natural, melodic, or harmonic minor)

You may choose from the scales listed. Two from the list are written out for you below.

G Major

C Major

E minor

D minor

D Major

B minor

G minor

A Major

A minor

D Major-Cello

(2 octaves)

♩=96



C Major-Cello

(2 octaves)

♩=96



Intermediate Level

Scales: 1-2 octaves (major or natural, melodic, or harmonic minor)

You may choose from the scales listed. Two from the list are written out for you below.

G Major
D Major
A Major

C Major
F Major
B-flat Major

E minor
B minor
A minor

D minor
G minor

F Major-Cello

(2 octaves)

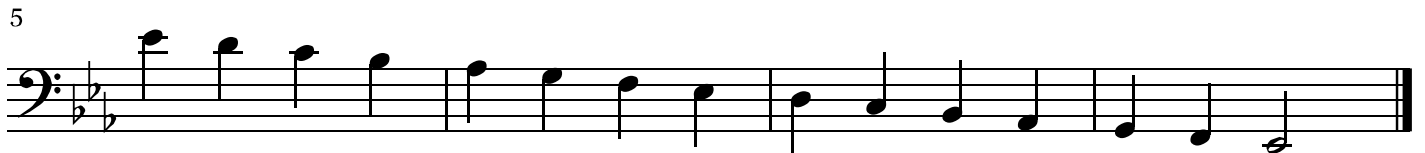
♩=96



E-flat Major-Cello

(2 octaves)

♩=96



Advanced Level

Scales: 2-3 octaves (major or natural, melodic, or harmonic minor)

You may choose from the scales listed. Two from the list are written out for you below.

G Major
D Major
A Major
E Major
C Major

F Major
B-flat Major
E-flat Major
A-flat Major

E minor
B minor
F# minor
C# minor
A minor

D minor
G minor
C minor
F minor

C Major-Cello

(3 octaves)

♩=96

6

The musical notation for C Major-Cello (3 octaves) is presented in two staves. The first staff shows the scale ascending from C2 to C5 in 4/4 time, with a tempo marking of ♩=96. The second staff shows the scale descending from C5 to C2, with a fingering '6' indicated at the beginning. The notes are: C2, D2, E2, F2, G2, A2, B2, C3, D3, E3, F3, G3, A3, B3, C4, D4, E4, F4, G4, A4, B4, C5.

F Major-Cello

(3 octaves)

♩=96

6

The musical notation for F Major-Cello (3 octaves) is presented in two staves. The first staff shows the scale ascending from F2 to F5 in 4/4 time, with a tempo marking of ♩=96. The second staff shows the scale descending from F5 to F2, with a fingering '6' indicated at the beginning. The notes are: F2, G2, A2, Bb2, C3, D3, E3, F3, G3, Ab3, Bb3, C4, D4, E4, F4, G4, Ab4, Bb4, C5, D5, E5, F5.

Section II: Short Excerpt from a prepared solo