



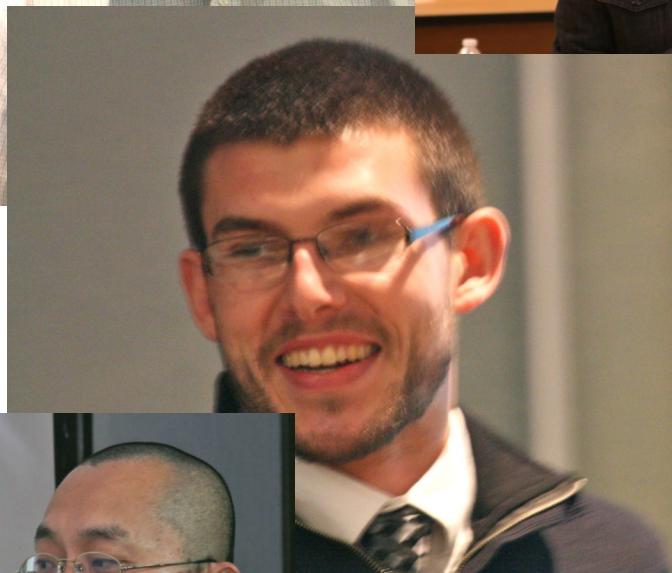
TEXAS TECH UNIVERSITY

# Wind Science and Engineering Research Center™

Bi-Weekly Newsletter: Faculty, Staff, and Ph.D. Student Updates

## WiSE Wednesday Waiting for You...!

Here are some of our talented WiSE team members, both students and faculty, who participated in the WiSE Wednesday Lecture Series last semester. Thanks to all, and here's to a new Spring 2012 semester!



# WiSE Professor Recognized for Lengthy Service



Late last year, Dr. Ernie Kiesling, Professor of Civil Engineering, researcher in WiSE, and the Executive Director of the National Storm Shelter Association (NSSA), was given special recognition by the Texas Board of Professional Engineers for "Outstanding Service to the State of Texas as Professional Engineer for over 50 years."

Dr. Kiesling has more than 50 years of teaching, research, administration and public service in his career at TTU. He leads the storm shelter research within WiSE and he and his colleagues developed the Safe Room, an above-ground shelter that was recently seen in action during the summer 2011 storms in Alabama, Missouri, and elsewhere.

Dr. Kiesling received his original license in July of 1961.

He serves on the International Code Council (ICC) committee who developed the ICC 500 storm shelter standard. Additionally, he was instrumental in founding the NSSA.

**Congratulations, Dr. Kiesling!**

## Winter WiSE Tours Continue



(Above) Students from Post High School braved a cold day to visit the WiSE research facilities at Reese last month. PHS was not the only tour group to pass through, as students from Sharp Academy also visited. Thanks to all who helped out and are involved.

## Keeping Up with WiSE...

Are you Friends with WiSE on Facebook? Join the cool crowd of more than 218 people from around the world who have Friendened us, and keep up with the day-to-day news and announcements there...

You probably check Facebook every day already... Why not add one more page to your list?



Become a fan  
on Facebook

**Look for  
"Wind Science and  
Engineering Research  
Center"**