



TEXAS TECH UNIVERSITY

Wind Science and Engineering Research Center™

Bi-Weekly Newsletter: Faculty, Staff, and Ph.D. Student Updates

SWIFT Project Making Progress...



Ongoing progress is being made with the preparation for the Scaled Wind Farm Technology (SWIFT) facility. A collaborative project between TTU WiSE, the U.S. Department of Energy, Sandia National Laboratories, Vestas and Group NIRE, it is planned to commence operation later this fall.

(Image on right) - (L-R) WiSE Research Scientist David Kroeker and Senior Technician Coby Shelton take a breather between the heavy lifting involved with prep for SWIFT.

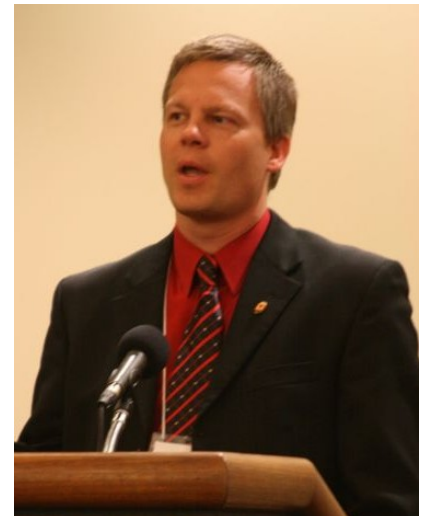
WiSE Director Receives International Wind Engineering Award

During the summer months, John Schroeder, Director of WiSE, has been awarded the 2012 International Association for Wind Engineering (IAWE) Junior Award recognizing outstanding achievement of researchers under age 40 within the previous five-year period.

“It is indeed an honor to receive this IAWE award,” Dr. Schroeder reported. “I have been fortunate to receive a wealth of wisdom and advice from so many good mentors over the years, and have been encouraged throughout my career by so many wonderful colleagues. This award is only possible because of those individuals and because of my graduate students who worked so diligently to accomplish our contributions.”

According to IAWE, recipients of this award should have made significant and original contributions to wind engineering research, applications to wind engineering practice, or educational contributions in the field of wind engineering.

Congratulations!

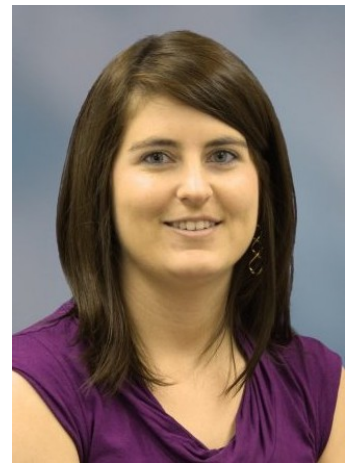


WiSE Grads and Faculty Have Research Published

WiSE grad Dr. Tanya M. Brown, WiSE faculty affiliate Dr. Daan Liang, and WiSE grad J. Arn Womble will have a paper published in the prestigious *Wind and Structures* Journal (Vol. 15.5 (369-383)). Titled "Predicting Ground-Based Damage States From Windstorms Using Remote-Sensing Imagery," the paper will be published in September.

Dr. Brown (image left) graduated from WiSE in 2010 and now works for the Insurance Institute for Business and Home Safety (IIBHS) in South Carolina. Dr. Liang is Associate Professor in TTU's Department of Construction Engineering and Engineering Technology, and Mr. Womble works for Windforce Associates here in Lubbock.

Congratulations!



WiSE Has Large Team Represented at AAWE workshop



**American Association
for Wind Engineering**

WiSE representatives made a large showing at the recent 3rd American Association for Wind Engineering Workshop held in Hyannis, MA, during mid-August. More than 20 people from WiSE (from Ph.D. students and graduates to our P.W. Horn Professor and other faculty and researchers) gave presentations on a wide variety of topics during this conference.

This workshop is the third in a series of workshops held every 18-24 months by the AAWE and consisted of approximately two days of presentations and discussions.

SAVE THE DATE...



You are invited to join in the Kick-Off Luncheon which signals the return of the Fall Semester at TTU WiSE.

**Monday, September 17
11:30 a.m. - 1 p.m.**

**MORE DETAILS
TO COME...**



Become a fan
on Facebook

**Look for
"Wind Science and
Engineering Research
Center at Texas Tech"**

**280
friends and counting...**