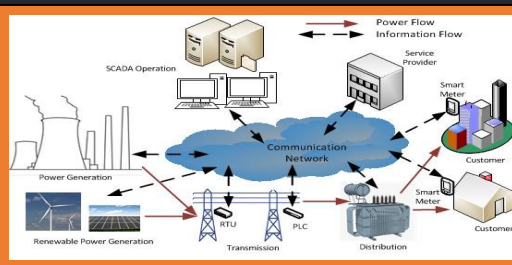
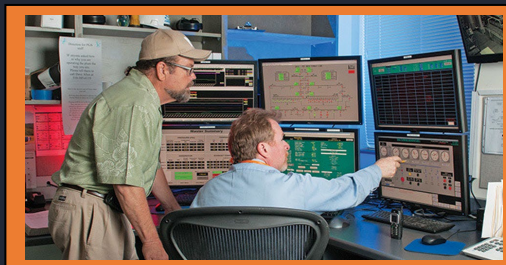


# Critical Infrastructure Security Training Programs for Industry Professionals and University Students

(Sponsored by the Texas Workforce Commission's Wagner-Peyser Grant)



Comprehensive and Hands-on training for interested employed and unemployed workforce for a resilient, cyber-physical system (CPS) in Critical Infrastructure facilities. Adaptive programs offered based on participant's qualifications. Only participants willing to commit the entire course will be accepted.

## 80 Seats Available (10 per session date)

### Education and Experience

- Community college/4 Year College in the areas of Electrical and Water Distribution, Power Generation, Renewables, and IT or GED. Students will be counselled to the appropriate program offerings, based on their backgrounds.

### Minimum Qualifications

- Basic understanding of networking, IT, Energy and Utility Operations, and Windows
- Must meet Texas Workforce Commission eligibility requirements as follows:
  - be fourteen (14) years of age or older;
  - be a United States (U.S.) citizen or a noncitizen authorized to work in the U.S. (F1 students with SSN are eligible);
  - if male, be in compliance with the United States Selective Service System registration requirements.

### Course Offerings

- Computer Networking for Industrial Control Systems with hardware devices connected in Critical Infrastructure facilities.
- EXata CPS Network Simulator: Different Cyber-Attack scenarios training.
- Epic Groov Programmable Edge Controller: SCADA, Cybersecurity structures and cyber attacks
- Virtual Labs: Cyber Challenge Range, Pentesting and Understanding Vulnerabilities, Cybersecurity Attack and Defend, CompTIA CySA+.

### Course Delivery

- Distance modules will be made available on a learning management system. Students are expected to complete the online modules before the hands-on training.
- Followed by Two-day hands-on training at Reese Technology Center, Lubbock, TX in Summer 2022:

Session 1: June 17 & 18

Session 2: June 24 & 25

Session 3: July 15 & 16

Session 4: July 22 & 23

Session 5: July 29 & 30

Session 6: August 12 & 13

Session 7: August 19 & 20

Session 8: August 26 & 27

### Training Outcomes

- Trainees will earn CEUs issued by Texas Tech University.
- Trainees earning CEUs will be better prepared in cyber-physical security aspects in the Critical Infrastructure Sector.
- Trainees will be engaged with several industry partners



### Address:

National Wind Institute, Reese Technology Center  
1103 Fillmore Dr.,  
Lubbock, TX 79416

If interested please contact Manohar Chamana ([m.chamana@ttu.edu](mailto:m.chamana@ttu.edu)) or Argenis Bilbao ([argenis.bilbao@ttu.edu](mailto:argenis.bilbao@ttu.edu)) or Tracie McClaran ([Tracie.McClaran@ttu.edu](mailto:Tracie.McClaran@ttu.edu)) with Texas Tech University

REGISTRATION LINK: <https://registration.continuinged.ttu.edu/ttu/course/course.aspx?catId=34>