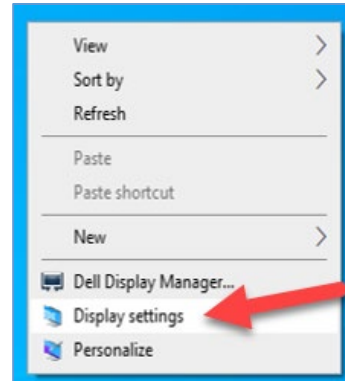
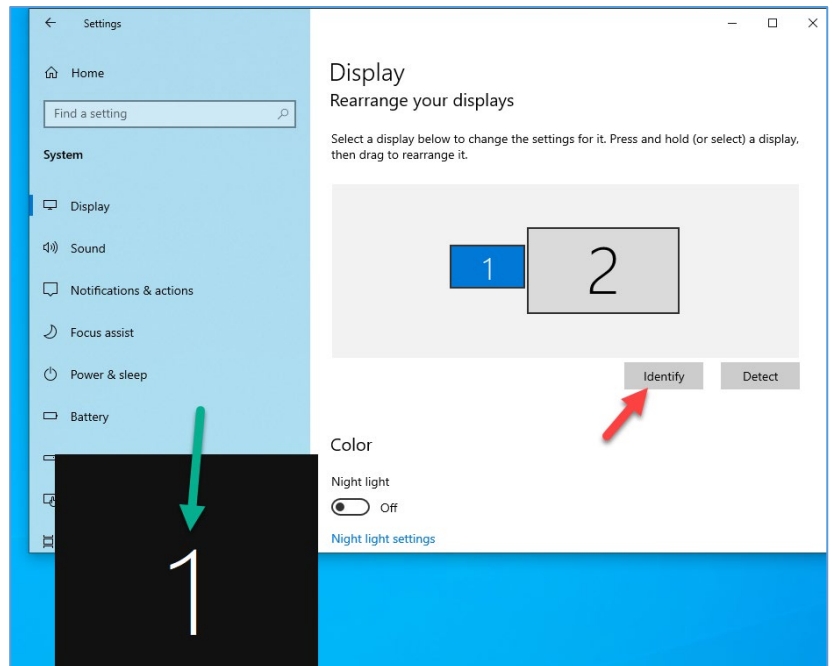


Monitor Setting Options:

1. Using the empty space on your desktop, Right click the mouse & select Display Settings.



2. Settings will display your monitors. By hitting the “Identify” button, you can determine which monitor correlates with the numbers shown.



3. You can click on the monitors and drag as needed to get them to match the numbers identified.

4. You want to make sure the “Multiple display” is set to “Extend these display”.

5. Whichever monitor you want your desktop icons to stay on will need to have the box checked for “Make this my main display”

