

•

How to Enable and Use Remote Desktop for Windows 10

Remote Desktop Protocol (RDP) has been a feature of Windows since the XP Pro days. Here's a look at using it in Windows 10 with the Remote Desktop app.

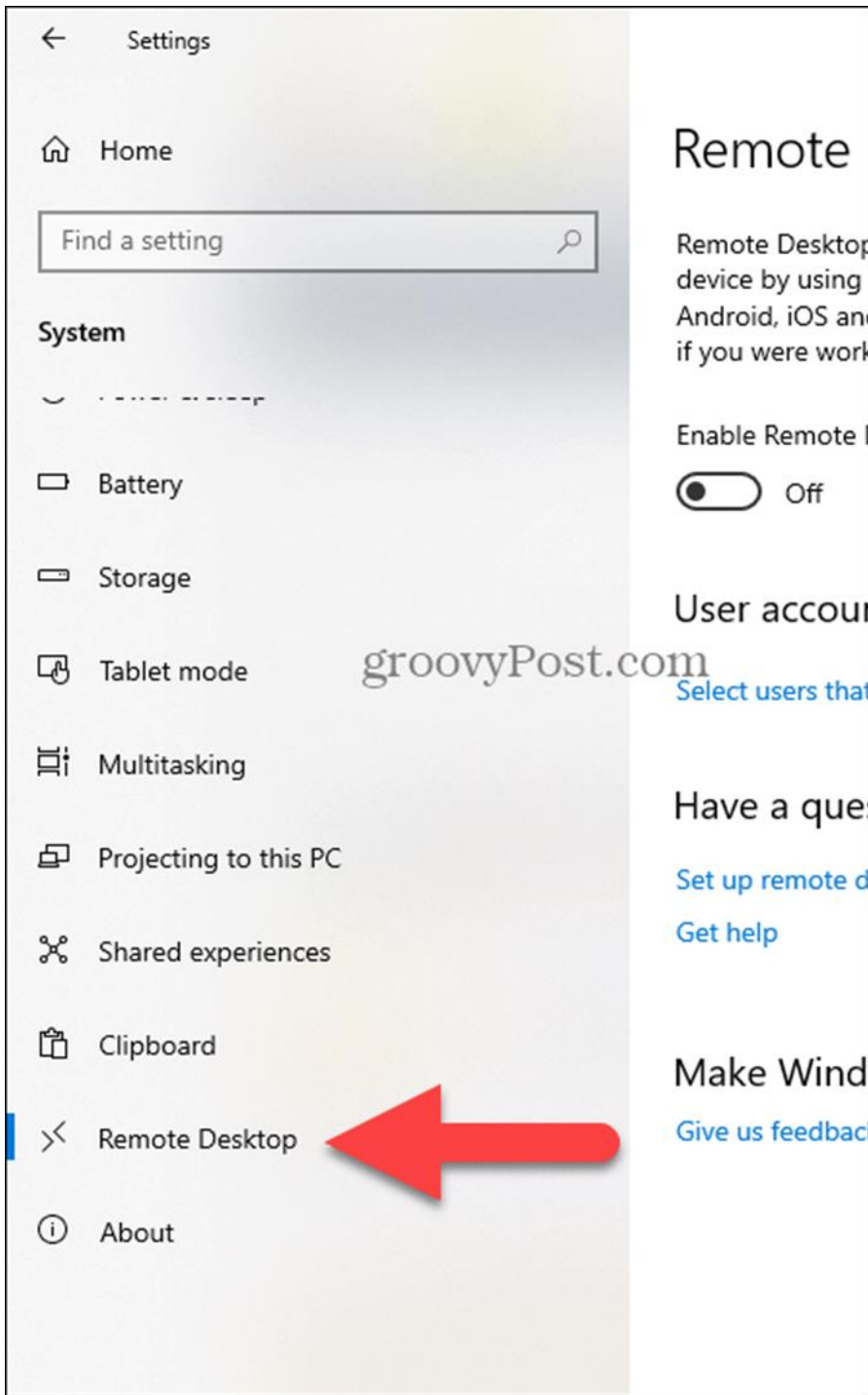
Remote Desktop Protocol (RDP) has been a feature of Windows since the XP Pro days. It makes it easy to connect from one PC or device to another to retrieve files or provide PC support.

There are several free utilities out there that will get you set up with a remote connection. Some that come to mind are services such as [join.me](#), [TeamViewer](#), and [Chrome Remote Desktop](#) and are especially handy when connecting between different platforms. But if you're in a pure Windows environments, here's a look at how to enable the built-in RDP utility in Windows 10 which will allow you to connect to your Windows box remotely.

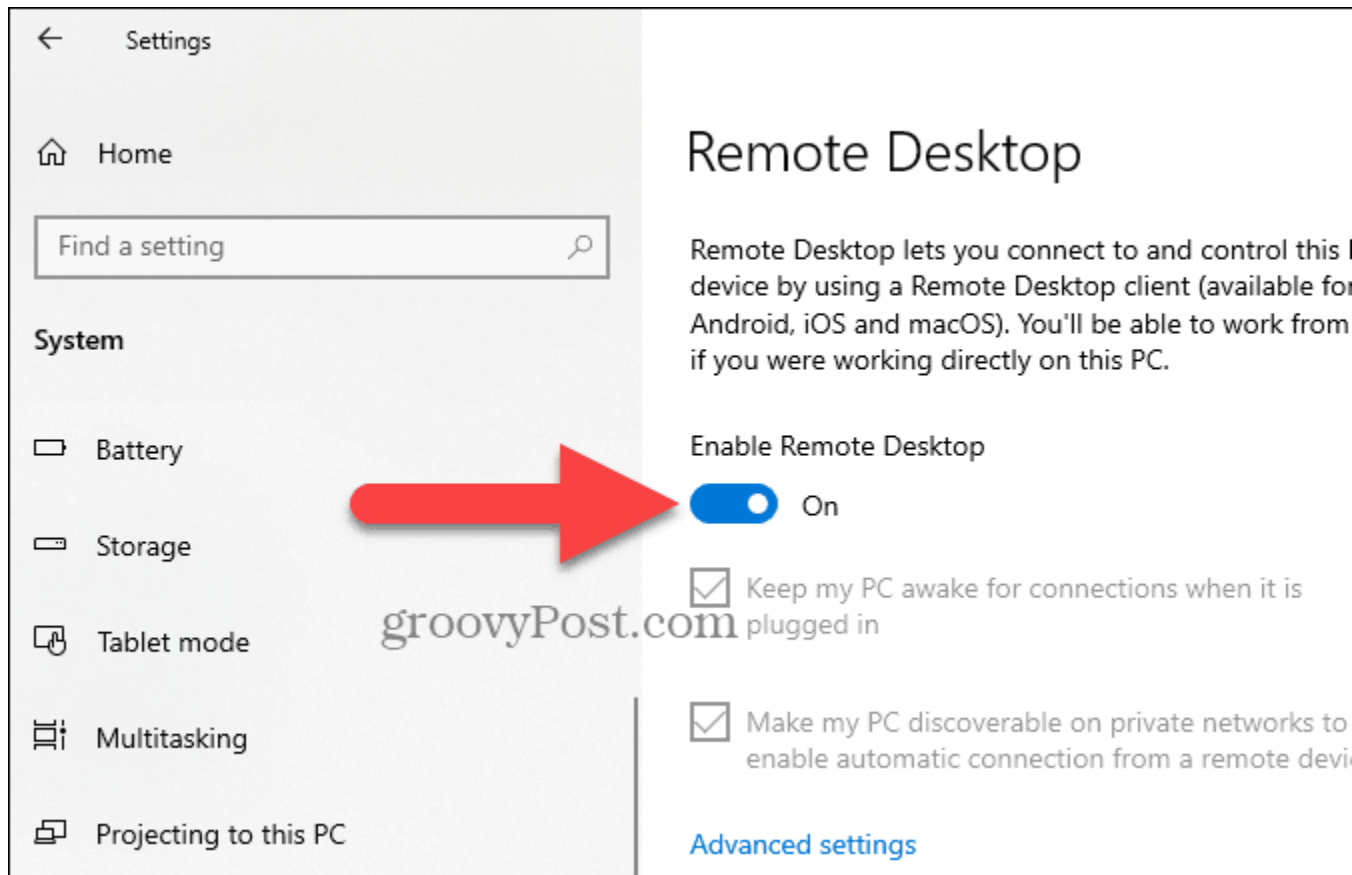
Enable Remote Desktop for Windows 10 Pro

The Remote Desktop or RDP feature is disabled by default so you will need to enable it in the settings. There are several ways to do this, let's review the easiest.

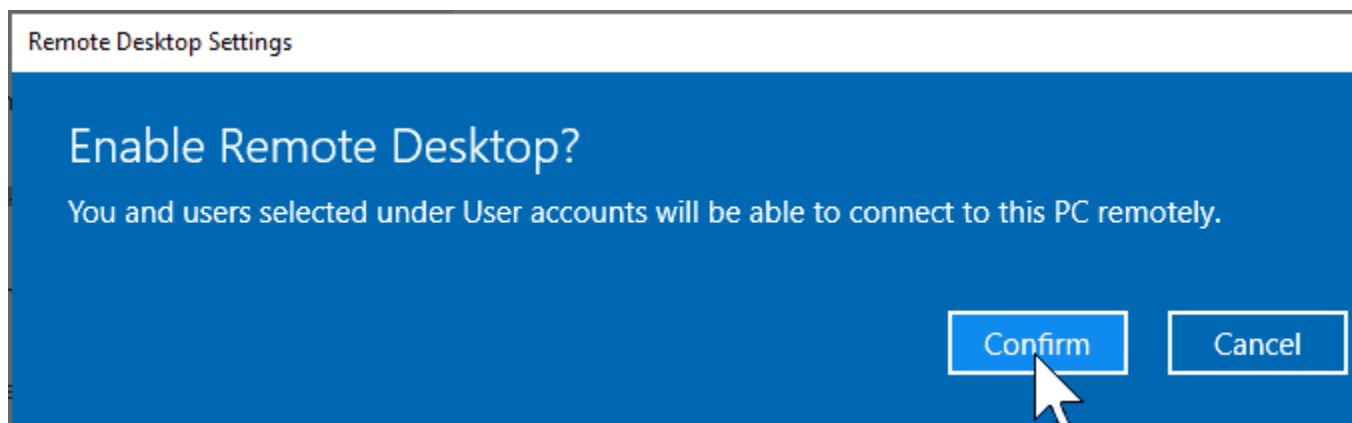
1. Open Settings
2. Click System > Remote Desktop



1. Click the toggle **Enable Remote Desktop**

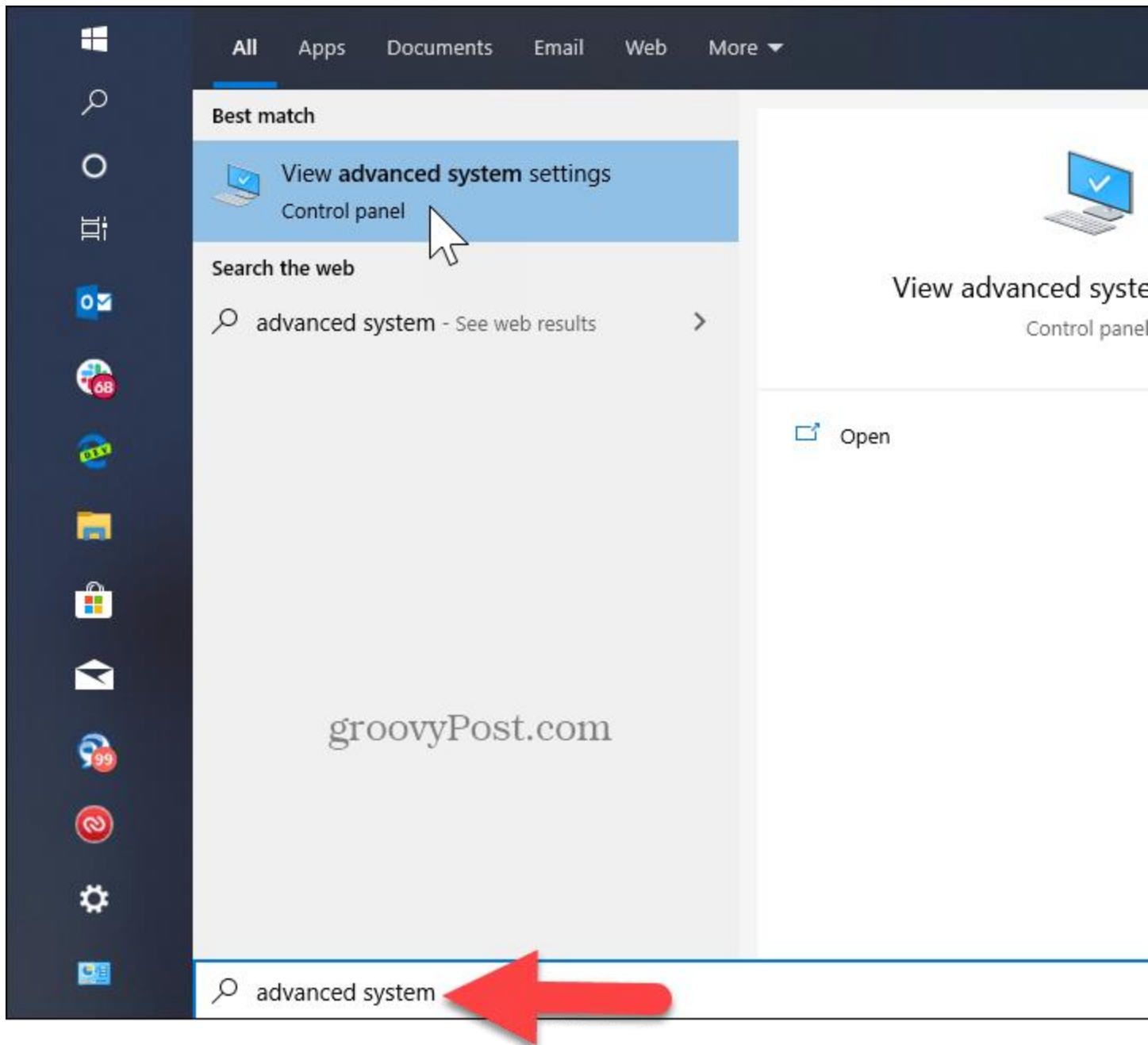


2. Click **Confirm** when promoted.

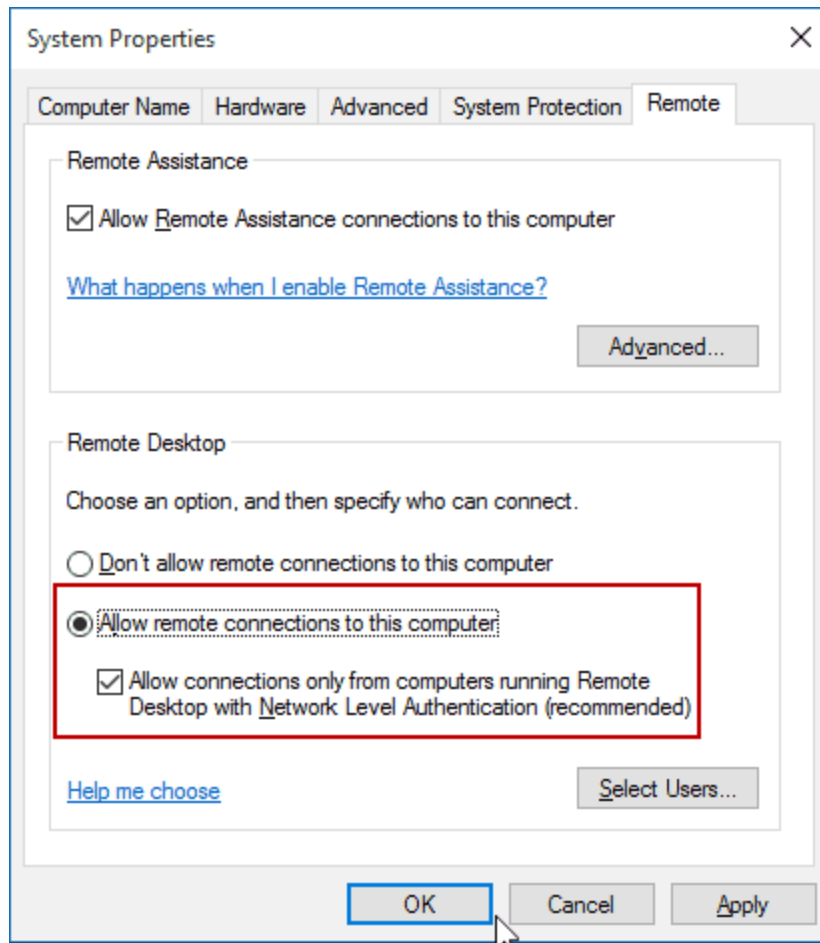


Expert Note:

You can also enable Remote Desktop using the System Properties. Press the Windows Key and **Type:** advanced system. Click **View advanced system settings**.



Click the **Remote** tab and select **Allow remote connections to this computer**. Keep the box checked for Network Level Authentication for better security. Also, note that you will need to enable incoming remote connections on the PC you're connecting.

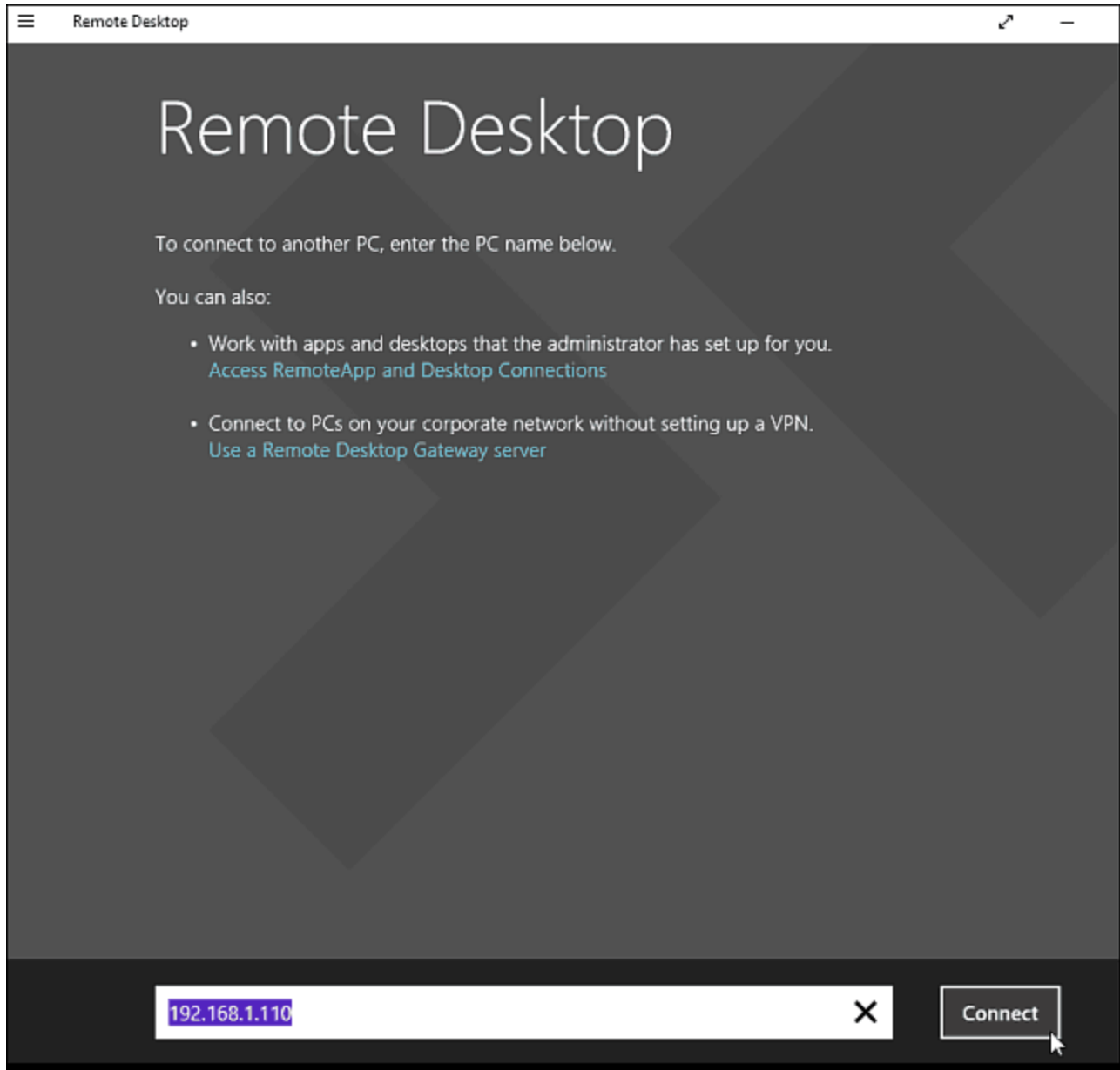


Remote Into Your PC

You have a couple of choices when it comes to how you remotely connect to the other computer. You can use the traditional desktop app or the Remote Desktop universal app. For this, I'm connecting to my [Windows Home Server](#) on my home network. I'm also going to use the app that you can [install from the Store](#). It's more versatile and can be used on mobile platforms including iOS and Android.

Tip: If you have a lot of PCs and devices on your home network, a useful free utility to use is [Advanced IP Scanner](#).

Launch the app and type a name for the PC or device, its hostname or IP address, and select Connect.




Next enter the username and password used for the computer you're connecting into. Also, if you're going to remote into it often, check the box to remember your credentials.

Enter your credentials

Enter your credentials

These credentials will be used to connect to 192.168.1.133.



user

.....

Domain:

Remember my credentials

If you get the following security message, click Go ahead and Connect and check the box for it to not remind you again. You know what you're doing, no reason to for Windows to be constantly nagging you.

Can't verify the identity of the remote PC

Name in the certificate from the remote PC:
[GeekServer2011](#)

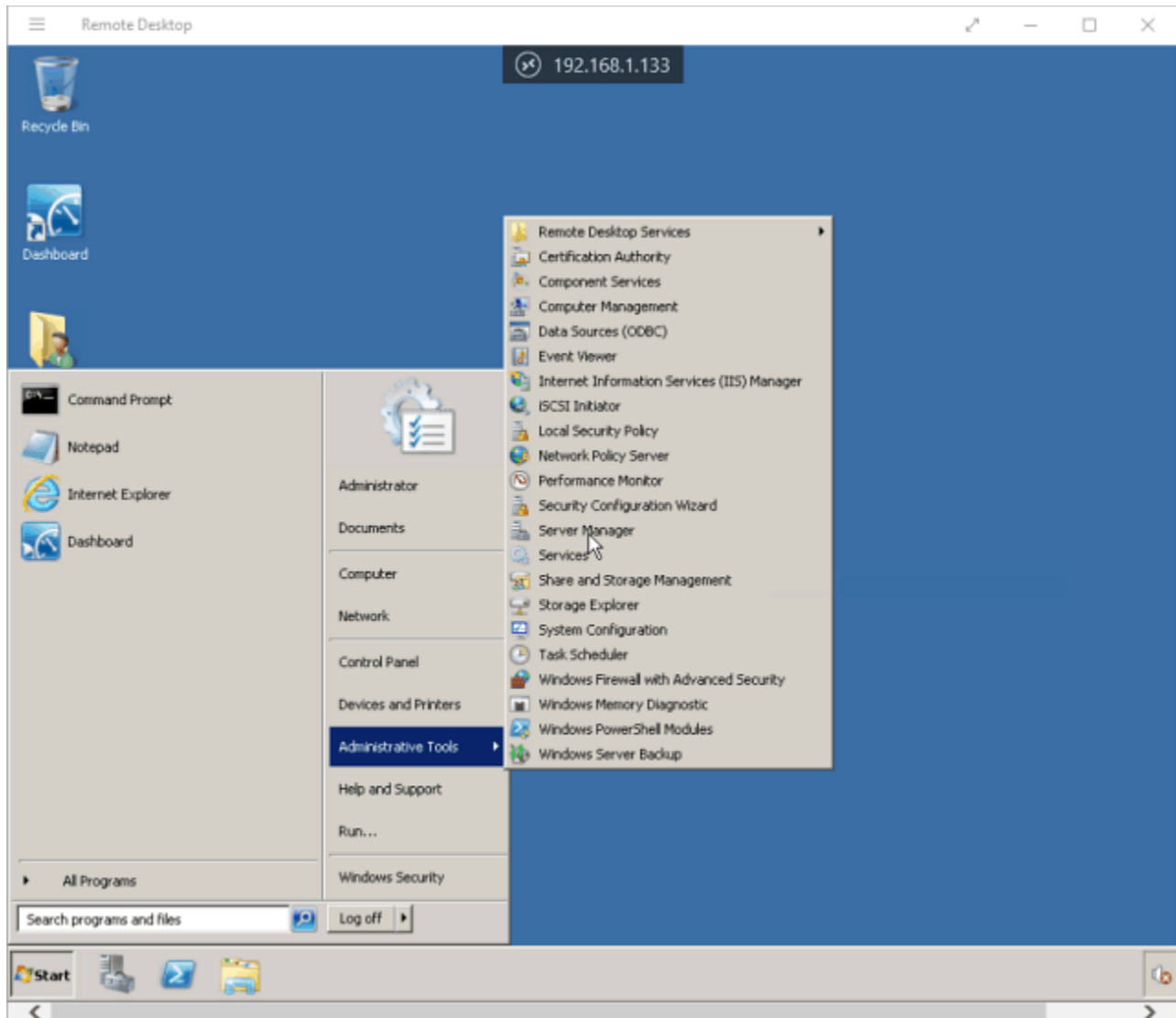
It may not be safe to connect to this PC. This might be because of the following reasons:

- The certificate's not from a trusted certifying authority.

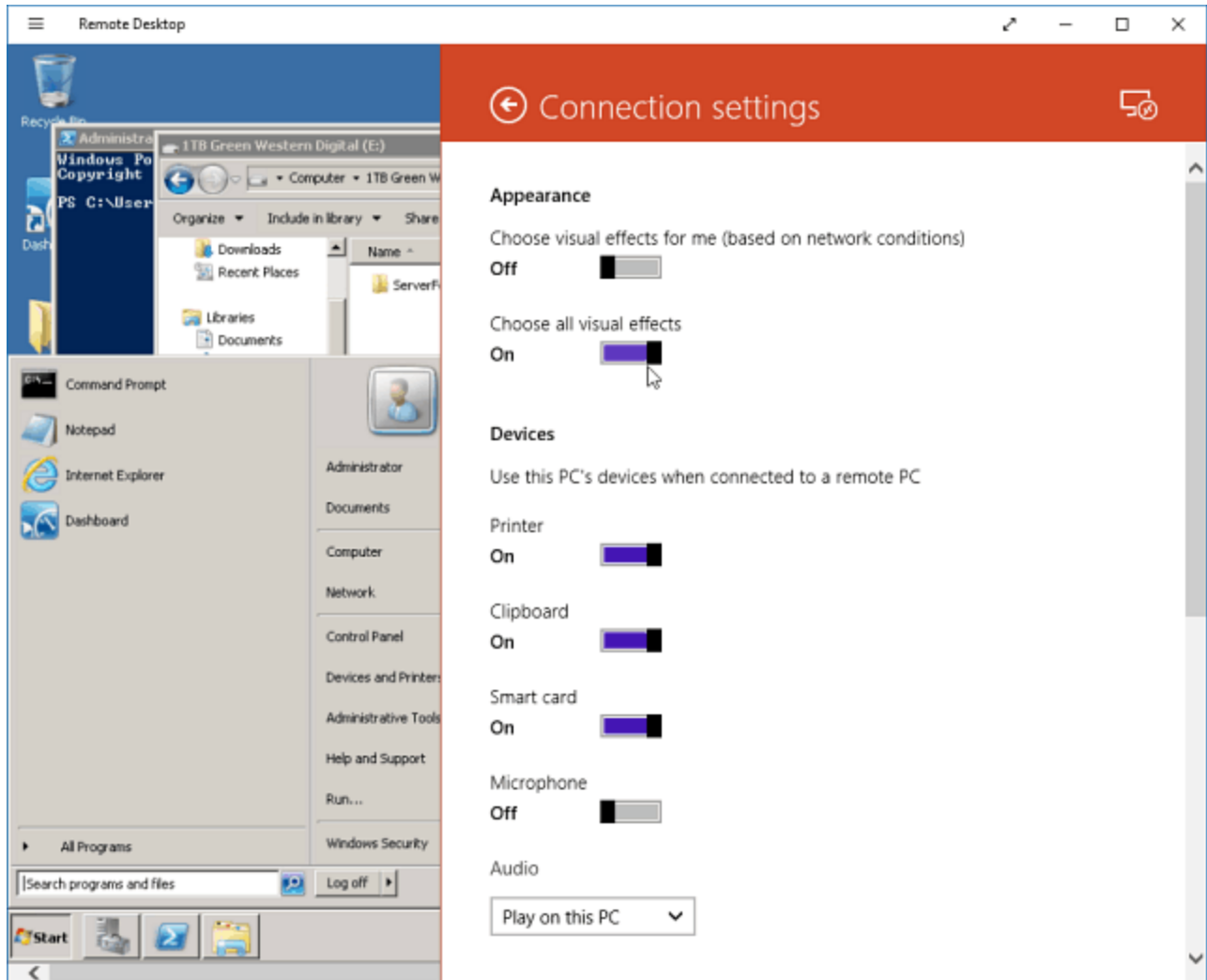
Do you want to connect anyway?

Don't ask me again for connections to this PC

There you have it. You can now start using the remote computer for configuration, remote support, or however you need to use it.



I should also mention that you can go to *Settings > connection settings* in the app and configure the appearance, devices, and make other adjustments that work for you.



More About Remote Desktop Connections

If you're running a previous version of Windows or looking to remote access your Windows PC from your smartphone or tablets, check out the articles linked below for more.

- [How to Enable Remote Desktop in Windows 7](#)
- [Make Remote Desktop Connections Work Faster](#)
- [Enable Remote Desktop for Windows 8](#)
- [Using the Windows Phone Remote Desktop App](#)
- [Remote Desktop Into Windows from a Mobile Device](#)

