

REACH OUT > ENGAGE > TRANSFORM

OUTREACH & ENGAGED SCHOLARSHIP  
ANNUAL ASSESSMENT REPORT  
CALENDAR YEAR 2021

This report highlights Texas Tech University (TTU) outreach and engagement activities from the Calendar Year 2021 campus-wide assessment. Data encompasses projects which took place between January 1, 2021 and December 31, 2021, as reported by faculty and staff from academic and administrative units at TTU.

Project data was compiled from multiple sources, including Faculty Success, the Raiders Engaged Survey, and INDICO (TTU's non-credit activities database). Faculty reporting took place primarily through Faculty Success and staff through Raiders Engaged.

# CALENDAR YEAR 2021

During Calendar Year 2021 project submissions increased by 344% from 542 in 2020 to 2,408 projects for the current report year. A total of 680 Texas Tech faculty and staff members submitted information. A total of 3,771 TTU faculty and staff were involved in these projects/activities with the highest numbers coming from the College of Arts and Sciences, the J.T. & Margaret Talkington College of Visual and Performing Arts, and the Davis College of Agricultural Sciences and Natural Resources.

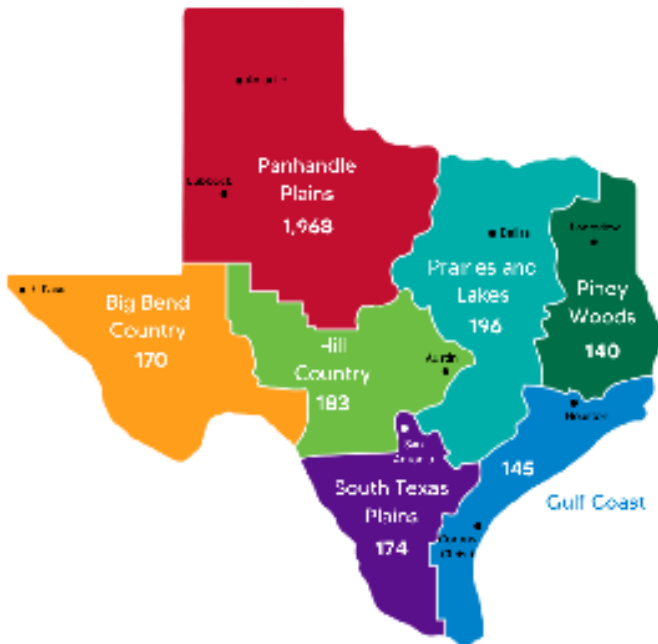
Projects and activities involved a total of 1,674 unique community partners including non-profit organizations, government agencies, business and industry, Pre-K-12 schools, other two - or four-year colleges, community organizations, civic groups, and others. Internally, projects involved 602 cross-disciplinary collaborations.

The largest areas of impact were Engaged Research and Creative Activity; Public Programs, Events, and Resources; and Technical or Expert Assistance. See graphics below for further details.

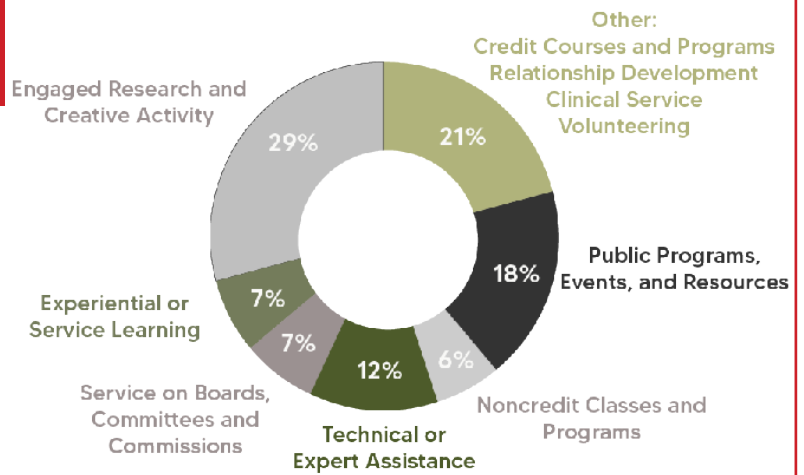
2,408

projects, programs, and events provided for, in and in partnership with the community

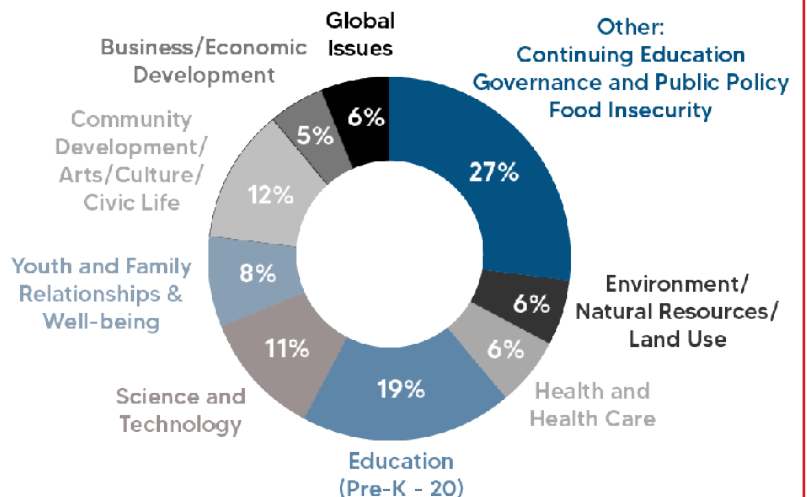
## GEOGRAPHIC IMPACT IN THE STATE



## FORMS OF ENGAGEMENT



## AREAS OF IMPACT



# IN 2021...

**2,768**  
External Community Partnerships



State Agencies  
Federal Agencies  
Local Government  
International Agencies



Non-profit Organizations  
Community Organizations  
Civic Groups  
Healthcare Organizations



K-12 Schools  
2 Year Schools  
4 Year Schools



Professional/Trade Associations  
Business and Industry

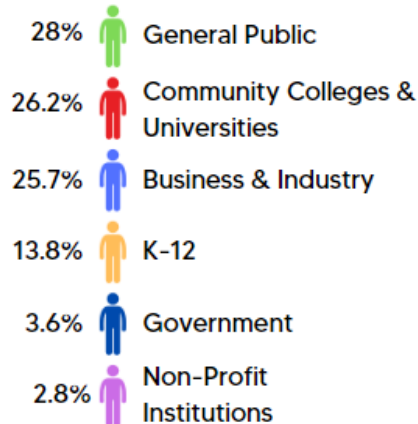
**21,032**

TTU students participating in High Impact Practices:

- Service Learning
- Undergraduate Research
- Study Abroad
- Internships
- Other Activities

**831,429**

Non-TTU attendees and participants in TTU outreach and engagement



**\$52.9M**

raised in external funding

**113,851**

K-12 students and teachers participating in TTU OES activities

**71**

faculty receiving awards for excellence in outreach and engagement

**652**

publications, presentations, performances, and other peer-reviewed scholarly products identified as outreach and engagement

## BY COLLEGE/ADMINISTRATIVE UNIT

Unit	Number of Projects	Total External Funding Received	Total TTU Students Involved	K-12 Participants	Other Participants	Total Participants	Total TTU Faculty & Staff Involved	Number of External Partnerships
College of Architecture	47	\$0	56	100	19	119	52	47
College of Arts & Sciences	400	\$8,832,106	2,004	4,499	480,142	484,641	637	597
College of Education	220	\$16,171,155	762	11,372	9,830	21,202	395	336
College of Engineering	150	\$1,862,700	421	5,801	21,039	26,840	326	264
College of Human Sciences	294	\$2,420,007	1,681	3,978	11,522	15,500	502	332
College of Media & Communication	62	\$272,863	546	36	74	110	72	57
Davis College Ag Sci & Natural Resource	327	\$15,125,530	639	1,390	17,977	19,367	659	351
Honors College	32	\$364,239	1,979	415	1,400	1,815	57	7
Rawls College of Business	94	\$284,000	548	102	10,208	10,310	115	117
School of Law	27	\$329,783	37	10	39,505	39,515	34	12
Talkington College of Visual & Performing Arts	385	\$180,253	354	11,959	1,554	13,513	447	289
<b>Office of the Provost All</b>	<b>276</b>	<b>\$2,929,992</b>	<b>1,477</b>	<b>62,378</b>	<b>39,303</b>	<b>101,681</b>	<b>285</b>	<b>226</b>
<i>Graduate School</i>	13	\$79,000	121	10,100	27,077	37,177	13	-
<i>University Libraries</i>	76	\$2,400	48	30	454	484	102	56
<i>University Studies</i>	4	\$66,000	-	-	31	31	4	1
Office of the President	4	\$0	4	5,150	26,293	31,443	7	15
Administration & Finance	72	\$0	3,878	500	50,719	51,219	116	43
Diversity Equity and Inclusion	10	\$1,375	234	2,596	1,330	3,926	30	58
Research and Innovation	8	\$4,153,852	1,592	187	6,163	6,350	37	17

# UO&E BACKGROUND AND MISSION

The Office of University Outreach and Engagement (UO&E) was established in Fall 2017 under Texas Tech's Office of the Provost to provide innovative, collaborative, and strategic leadership and support for the university's strategic priority of engagement with communities across the region, state, nation, and the world.

UO&E strengthens Texas Tech's ability to achieve excellence in outreach and engaged scholarship by serving as a catalyst, collaborator, and connector.

## 5 - Year Summary of TTU Outreach and Engagement

The Chart below highlights TTU's outreach and engagement key performance data over the past five years. The data was compiled from the Raiders Engaged Survey, Faculty Success (formerly Digital Measures), and other sources. The report summarizes data in relation to the goals as identified by the TTU Strategic Plan.

## Project Examples

### FLATLANDS DANCE THEATER

Allison Duffy, Boryana Rosenova

### TEXAS ALLIANCE FOR WATER CONSERVATION

Donna Michell McCallister, Jeff Pate, Krishna Jagadish, Michael Hudson, Phillip Brown, Phillip Johnson, Rick Kellison, Samantha Borgstedt

### TTU HONORS STUDENTS - BAYLESS ELEMENTARY MENTORING PROGRAM

Aliza Wong, Stacy Poteet

Texas Tech University					
5-Year Summary of Outreach and Engagement Data*					
	2017	2018	2019	2020	2021
TTU Outreach and Engagement Projects, Programs, Classes, and Events	952	1,454	1,318	542	2,408
External Funding Received from Outreach and Engagement Activities	\$ 55,192,995	\$ 29,746,570	\$ 52,560,882	\$ 43,932,889	\$ 52,927,855
TTU Students Participating in High Impact Practices	155,749	418,047	11,852	11,227	21,032
K-12 Students and Teachers Participating in TTU OES Activities	386,929	953,885	255,452	103,094	113,851
Non-TTU Attendees and Participants in TTU Outreach and Engagement Activities	26,877,065	464,222,795	1,829,878	347,240	831,429
TTU Faculty and Staff Involved in OES Activities	14,700	6,020	1,779	863	3,771
External Outreach and Engagement Community Partnerships	1,271	1,274	1,701	708	2,768