

Central and autonomic nervous system interaction is altered by short-term meditation

Yi-Yuan Tang^{a,b,1}, Yinghua Ma^a, Yaxin Fan^a, Hongbo Feng^a, Junhong Wang^a, Shigang Feng^a, Qilin Lu^a, Bing Hu^a, Yao Lin^a, Jian Li^a, Ye Zhang^a, Yan Wang^a, Li Zhou^a, and Ming Fan^c

^aInstitute of Neuroinformatics and Laboratory for Body and Mind, Dalian University of Technology, Dalian 116024, China; ^bDepartment of Psychology, University of Oregon, Eugene, OR 97403; and ^cInstitute of Basic Medical Sciences, Beijing 100850, China

Communicated by Michael I. Posner, University of Oregon, Eugene, OR, April 12, 2009 (received for review February 18, 2009)

Five days of integrative body–mind training (IBMT) improves attention and self-regulation in comparison with the same amount of relaxation training. This paper explores the underlying mechanisms of this finding. We measured the physiological and brain changes at rest before, during, and after 5 days of IBMT and relaxation training. During and after training, the IBMT group showed significantly better physiological reactions in heart rate, respiratory amplitude and rate, and skin conductance response (SCR) than the relaxation control. Differences in heart rate variability (HRV) and EEG power suggested greater involvement of the autonomic nervous system (ANS) in the IBMT group during and after training. Imaging data demonstrated stronger subgenual and adjacent ventral anterior cingulate cortex (ACC) activity in the IBMT group. Frontal midline ACC theta was correlated with high-frequency HRV, suggesting control by the ACC over parasympathetic activity. These results indicate that after 5 days of training, the IBMT group shows better regulation of the ANS by a ventral midfrontal brain system than does the relaxation group. This changed state probably reflects training in the coordination of body and mind given in the IBMT but not in the control group. These results could be useful in the design of further specific interventions.

anterior cingulate cortex | body–mind interaction | IBMT

In a previous study (1, 2), 80 Chinese undergraduates were randomly assigned to an experimental group (integrative body–mind training, IBMT) or to a control group (relaxation training) for 5 days of short-term training (20 min per day). Before training, no differences were found for behavioral, endocrine, and immune measures between the 2 groups. After 5 days of training, the IBMT group showed significantly greater improvement of performance in executive attention and positive mood, significantly reduced stress as measured by cortisol secretion following a stressful experience, and increased immunoreactivity compared to participants with the same amount of relaxation training.

IBMT was adopted from traditional Chinese medicine and incorporates aspects of meditation and mindfulness training. Cooperation between the body and the mind is emphasized in facilitating and achieving a meditative state (1, 3). Combined use of body and mind training is consistent with studies in which changes in the body influence and facilitate emotional and cognitive processing (4–7). Relaxation training, on the other hand, requires voluntary control in progressive relaxation of the muscles of the body, sending feedback to influence the mind (8, 9). During relaxation training, thinking about control operations could interfere with training effects (1, 3), leading to different results between the IBMT and the relaxation groups.

To test the mechanisms of training, this study used random assignment of 86 Chinese undergraduates to 2 experimental (IBMT) or control (relaxation) groups. Forty-six subjects participated in experiment I using brain imaging and physiological measures, whereas another 40 subjects participated in experiment II using EEG and physiological measures. The physiolog-

ical measures included heart rate, skin conductance response (SCR), and respiratory amplitude and rate, to monitor autonomic nervous system activity. These measures allowed evaluation of the training stages in the 2 parallel experiments to make sure all subjects attained similar meditative or relaxation states during and after training.

This design allowed us to apply random assignment using participants without any previous meditation or relaxation experience, given the same amount of training to detect the relationship between the brain networks and the autonomic nervous system (ANS) during training (see *Materials and Methods*).

A brain network including anterior cingulate cortex (ACC) and prefrontal cortex (PFC) has been shown to be an important mechanism for self-regulation of cognition and emotion (10–13). The sensitivity of the ACC to both reward and pain (14, 15) and evidence for ACC coupling to cognitive and emotional areas during task performance (16, 17) support the idea that the role of this brain region is to regulate the processing of information from other networks. The ACC thus serves as part of an executive attention network involved in the control of both cognition and emotion (18). Because the IBMT group showed higher levels of self-regulation than the relaxation group following training (1, 2), we hypothesized that activity in the ACC will be increased more by IBMT than by relaxation training.

Meditation is accompanied by physiological changes. Wallace (19) first reported that transcendental meditation induced physiological changes in oxygen consumption, heart rate, skin resistance, and certain EEG frequencies. Indexes of ANS function including heart rate/heart rate variability (HRV), skin conductance/resistance response, respiratory amplitude/rate, and EEG frequencies have become biomarkers for monitoring meditative states (20–23). Because IBMT changes the state of the body through autonomic control (2, 3), we hypothesized that signs of ANS activity, especially parasympathetic activity, will increase during and following IBMT.

During meditation, an increase in frontal midline theta power as measured from scalp electrodes has been widely reported (20, 24–26). Functional (f)MRI studies have also identified dorsal and ventral ACC involvement in autonomic control (27–30). High-frequency HRV is associated with the parasympathetic component of the ANS and ventral (v)ACC activation correlated significantly with high-frequency HRV, suggesting ACC control of parasympathetic autonomic activity (25, 26, 29). On the basis of these findings, we hypothesized that the IBMT group would show greater EEG power in the frontal midline theta wave (ACC source) and the frontal midline theta rhythm will be positively correlated with high-frequency HRV.

Author contributions: Y.-Y.T. and M.F. designed research; Y.-Y.T., Y.M., Y.F., H.F., J.W., B.H., Y.L., J.L., Y.Z., Y.W., and L.Z. performed research; Y.-Y.T., Y.M., Y.F., H.F., S.F., Q.L., and J.L. analyzed data; and Y.-Y.T. wrote the paper.

Conflict of interest: The authors declare no conflict of interest.

¹To whom correspondence should be addressed. E-mail: yiyuan@uoregon.edu.

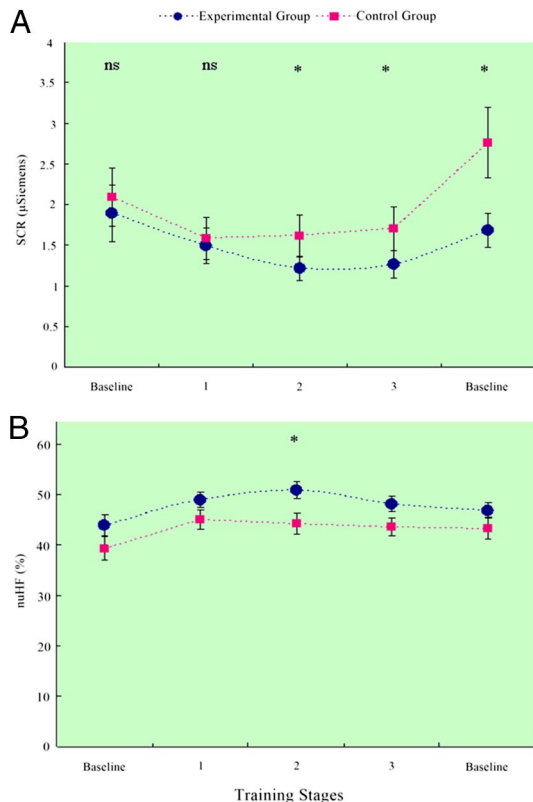


Fig. 1. Physiological indexes comparison for IBMT and relaxation training (RT). (A) Skin conductance response (SCR) before, during, and after training in the experimental (IBMT) and control (RT) groups. For SCR, the lower score shows more parasympathetic activity. (B) High-frequency HRV before, during, and after training in the experimental (IBMT) and control (RT) groups. For high-frequency HRV, the higher score shows more parasympathetic activity. (A and B) The horizontal axis indicates the 5 training stages: baseline before training, 3 periods of IBMT or RT with 9 min each (1, 2, 3), and baseline after training. The vertical axis indicates SCR change and percentage of change in normalized units of high-frequency (nuHF) HRV, respectively. *, $P < 0.05$; ns, no significance.

Results

Repeated ANOVAs were conducted with group (IBMT and relaxation) and training session (before, during, and after) as factors. Before training, no differences were found for SCR, heart rate, respiratory amplitude and rate, EEG power, and brain activity between the 2 groups ($P > 0.05$).

Experiment I Physiological Indexes. After 5 days of training, the main effect of training session was significant for SCR in the IBMT group in comparison with the relaxation group [$F(1, 41) = 9.937$; $P < 0.01$]. The group \times session interaction was significant [$F(1, 41) = 6.652$; $P < 0.01$]. Further, in comparison with relaxation, SCR was significantly lower during practice periods 2 and 3 and after baseline (but not during period 1 and before baseline), indicating that the SCR was related to the amount of training (see Fig. 1A).

Similar results were found for heart rate, belly respiratory amplitude, and chest respiratory rate. After 5 days of training, the main effect of training session was significantly lower for heart rate [$F(1, 41) = 27.683$; $P < 0.01$], greater for belly respiratory amplitude [$F(1, 41) = 12.646$; $P < 0.01$], and lower for chest respiratory rate [$F(1, 41) = 6.718$; $P < 0.01$] in the IBMT group compared to the relaxation group. The group \times session interaction was significant for heart rate [$F(1, 41) = 10.124$; $P < 0.01$], belly respiratory amplitude [$F(1, 41) = 10.807$;

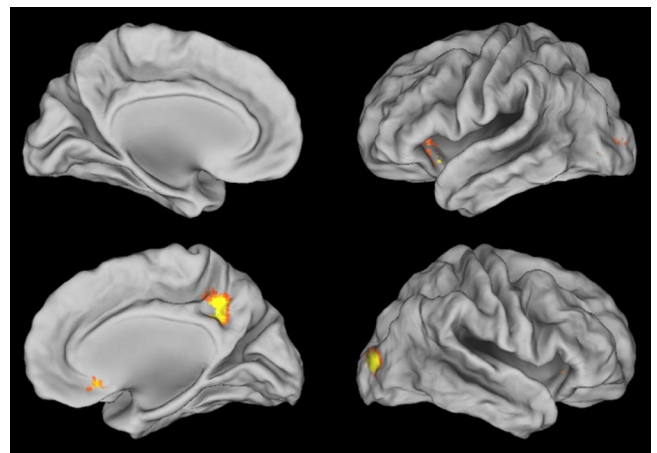


Fig. 2. Comparison maps of r-CBF change in IBMT compared to RT in left and right hemispheres after training minus before training. The upper row is the left hemisphere and the lower row the right hemisphere. Left, a medial view; right, a lateral view (displayed at $P_{FWE} < 0.05$, corrected).

$P < 0.01$], and chest respiratory rate [$F(1, 41) = 13.139$; $P < 0.01$], respectively.

After 5 days of training, we also performed an analysis of HRV. The main effect of training session was significant for percentage of change in the normalized unit of high-frequency (nuHF) HRV in the IBMT group in comparison with the relaxation group [$F(1, 41) = 21.041$; $P < 0.01$] and the group \times session interaction was also significant [$F(1, 41) = 5.272$; $P < 0.01$]. In comparison with the relaxation group, high-frequency HRV in the IBMT group was significantly improved during practice period 2 [$F(1, 41) = 6.635$; $P < 0.05$] and marginally significant during practice period 3 [$F(1, 41) = 3.910$; $P = 0.055$], respectively, indicating that high-frequency HRV was more related to the state the subjects maintained (see Fig. 1B). Results of lower SCR, increased belly respiratory amplitude, decreased chest respiratory rate, and more high-frequency HRV demonstrated the better ANS regulation, especially more parasympathetic activity during and following IBMT in comparison with relaxation.

Experiments I and II Brain Imaging. To explore brain mechanisms during short-term meditation, we recorded brain activity using EEG and single photon emission computed tomography (SPECT) (to avoid fMRI noise that could distract from the meditative state) to get temporal and spatial information (31–33). In experiment I, before training, none of the scalp electrodes of the EEG showed differences between the 2 groups ($P > 0.05$). In the IBMT group, ANOVAs revealed a group \times session effect for frontal midline electrodes Fz [$F(1, 32) = 4.921$; $P < 0.05$], FCz [$F(1, 32) = 4.468$, $P < 0.05$], and Cz [$F(1, 32) = 5.054$, $P < 0.05$], respectively. After training, a t test indicated significant increases in the IBMT group (but not the relaxation group) in EEG power in the theta frequency band (3–8 Hz) for frontal midline electrodes Fz, FCz, and Cz ($P < 0.05$), often related to generators in the ACC (18, 20, 24, 25).

In experiment II, after 5 days of training, in comparison with the relaxation group, global brain activity was reduced in the IBMT group. However, the IBMT group showed more regional cerebral blood flow (r-CBF) in the right ACC, including the subgenual ACC (Brodmann area, BA 25, $x = 8, y = 18, z = -10$) and adjacent ventral ACC (BA 32), the left insula, the occipital lobule, the right posterior cingulate cortex (PCC), the right precuneus, and subcortical structures of the putamen and caudate ($P_{FWE} < 0.05$, corrected, see Fig. 2).

memories, and wandering minds (56, 63, 64). Both IBMT and relaxation groups showed different brain patterns in this default network, indicating that training could affect the resting states (65, 66). In comparison with the relaxation control, the IBMT group showed a marked global reduction of activation, including the default network after training, further suggesting effective change and reorganization of the brain networks. This reduced brain pattern may reflect less effortful mental processes during IBMT practice. This may involve using minimal control to maintain the internal state of “being” rather than the state of “doing” used in relaxation training. This proposal was supported by evidence from self-reports of “forgetting my body or myself” in the IBMT group.

Greater precuneus and PCC activation in the relaxation group than in the IBMT group may indicate more self-referential awareness and thoughts (54, 67, 68). These are in line with previous findings that PCC activation is related to the mental self (69), and the precuneus involves self-centered mental imagery strategies and an episodic memory retrieval (70) and adaptive control network (54). How training changes the default network and reallocates the brain resources will require further investigation.

Central and Autonomic Nervous System Interaction. Increased EEG frontal midline theta power has been widely reported during meditation, and the ACC is suggested to be the generator of this activity (20, 24–26). After 5 days of training, the IBMT group (not the relaxation group) showed significant increases of theta power in frontal midline electrodes Fz, FCz, and Cz (ACC source). The frontal midline theta rhythm was associated with the parasympathetic component of the ANS (24, 26, 29). In combination with greater parasympathetic activity in lower heart rate and SCR, increased belly respiratory amplitude, decreased chest respiratory rate, and high-frequency HRV, these results provided strong evidence of central and autonomic nervous system interaction in IBMT practice. Skinner (71) reported brain control of cardiovascular dynamics. fMRI studies have found dACC and vACC involvement in autonomic control, and vACC activation correlated significantly with high-frequency HRV (27–30). These results suggest ACC control of parasympathetic autonomic activity (29, 30). Our results are consistent with previous studies indicating increased parasympathetic activity following meditation (25, 26).

After 5 days of training, the IBMT group also showed more left insula activity when compared with the relaxation group. Whereas Oppenheimer et al. (72, 73) reported the left insula is predominantly responsible for parasympathetic effects, this activation could reflect increased parasympathetic activity. We also found a significant correlation between high-frequency HRV and frontal midline theta activity only for the IBMT group (source at ACC). The significant increase in the correlation between frontal-midline theta and high-frequency HRV in the IBMT group is consistent with this idea. These changes indicated increased central and autonomic nervous system interaction that may be a result of the brain–body harmony emphasized in the practice of IBMT (3, 30). The concurrent increase in activation in the subgenual ACC and left insula in the IBMT group was consistent with previous findings of the distribution of Von Economo neurons (74, 75) in these 2 brain areas and their connectivity in the resting state (56). These 2 regions may provide an anatomical base for successful self-regulation.

We also found more activation of the right insula than the left insula in relaxation training. The right insula has been proposed to play a role in attending to internal bodily states (interoceptive awareness) and to be involved in energy expenditure and arousal (76–78). Several meditation studies have reported right insula involvement including focused attention to internal experiences (58), observation of the ongoing stream of internal experiences (79), and momentary self-reference centered on the present

(65). These forms of meditation training usually require concentration and effort to maintain the state (48, 65, 78, 80), and this effort is consistent with the function of the right insular cortex, which is more likely to produce sympathetic responses (72, 73). The finding that right insula activity is related to the regulation strategies of conscious control is congruent with its occurrence in relaxation and in some forms of meditation. Our results suggest that while many forms of meditation should produce stronger ACC activity, the forms that emphasize control of the mind might show more dorsal activation and would be more likely to produce sympathetic activity.

Model. Both brain imaging and physiological measures indicated that the IBMT group demonstrated changes in the autonomic and central nervous system that seemed to reflect the instruction to achieve equilibrium between body and mind (2, 3). Five days of IBMT improves attention and self-regulation by changing the interaction between the central (brain) and the autonomic (body) systems as indexed by ACC theta power and high-frequency HRV correlation. We believe that IBMT works by facilitating the achievement of a balanced body–mind state, producing the changes in brain and autonomic activity and their interaction observed in this study.

Materials and Methods

Participants. Eighty-six healthy Chinese undergraduates at Dalian University of Technology [42 males, mean age (\pm SD) = 21.45 \pm 2.22] without any training experience were randomly assigned to 2 experimental (IBMT) or control (relaxation) groups for experiment I and experiment II. Forty-six subjects participated in experiment I, using brain imaging and physiological measures, whereas another 40 subjects participated in experiment II, using EEG and physiological measures. All were free of cardiac, respiratory, and other diseases that would cause ANS dysfunction. No subject was medicated and no subject was a smoker or a habitual drinker. The experimental groups continuously attended IBMT for 5 days of training, 20 min per day. The control groups were given the same amount of muscle relaxation training sessions (see ref. 1 for details). Each person filled out a daily self-report questionnaire after each session and recorded day-to-day experiences before and after 5 days of training. The human experiment was approved by the local Institutional Review Board, and informed consent was obtained from each participant.

Experiments I and II Physiological Measures. To monitor real-time ANS activity and attain steady physiological signals during the training stage, we divided the training into 5 periods and recorded baseline before training, three 9-min periods of IBMT or relaxation (labeled as 1, 2, and 3 in Fig. 1), and baseline after training in 2 parallel groups to make sure all subjects attain similar meditation or relaxation states during and after training (1, 2).

To quantify the alteration in ANS function before, during, and after practice, heart rate, SCR, belly respiratory amplitude, and chest respiratory rate were recorded for each subject in 5 periods (19, 21, 23, 81). The physiological data were recorded and analyzed in 8 channels of the Procomp Infiniti System from Thought Technology. Power spectral analysis of HRV was performed with a fast Fourier transform and Biograph software, and spectral components were identified and then assigned, on the basis of their frequency: high frequency (HF; 0.16–0.45 Hz), low frequency (0.04–0.15 Hz), and very low frequency (VLF; 0–0.03 Hz). These components were obtained in absolute values of power (ms^2). HF components are reported in normalized units (nuHF), representing the relative value of the power of each component in proportion to the total power minus the VLF component (25, 26, 82). We report physiological data from experiment I in which 43 participants (20 in the IBMT group) had usable data after movement artifacts were eliminated. To control for variations of physiological indexes over the circadian rhythm, the measurements were performed from 2 p.m. to 6 p.m.

Brain Imaging. Experiment I SPECT. Neuroimaging data were acquired on a GE SPECT scanner (Millennium VG, GE Healthcare). Subjects were instructed to rest in the room with their eyes closed and ears unoccluded for 10 min at which time they were injected with 25 mCi of $^{99\text{m}}\text{Tc}$ -ECD. Twenty minutes following the injection, the subject was scanned for 30 min in a dual-headed rotating gamma camera using low-energy high-resolution collimators (VP 45). Each subject received 2 scans before and after 5 days of training. Forty subjects (20 in each group) had usable imaging data after motion correction, which were

analyzed using Statistical Parametric Mapping (www.fil.ion.ucl.ac.uk/spm/). Images for each participant were realigned to correct for head motion, normalized into a standard stereotaxic space as defined by the Montreal Neurological Institute (MNI), and smoothed with an 8-mm Gaussian kernel, full width at half maximum (2, 32, 33, 83).

The voxelwise threshold for activation was set at $P_{FWE} < 0.05$, corrected for the number of resolution elements in each of the regions of interest (ROI) by using the SPM small volume correction (SVC) procedure together with brain masks defined by the automated anatomical labeling toolbox (AAL) (www.fil.ion.ucl.ac.uk/spm/ext). The brain masks defined the brain regions over each of which the SVC was performed. These brain regions included subgenual ACC (BA 25), frontal lobule (BA 47), insula, temporal lobule (Wernicke's area), occipital lobule, parietal lobule, angular gyrus (BA 39), supramarginal gyrus, lingual gyrus, PCC, precuneus, putamen, caudate, and thalamus. The global pattern of the r-CBF changes in these areas was illustrated using caret software (see Figs. 2 and 3).

With the advance of new high-resolution collimators, SPECT has been improved in spatial resolution and is widely used in clinics and research to locate ACC and subcortical regions (32, 33, 83). In addition, our recent IBMT studies using a 3T Siemens fMRI scanner provide consistent results of subgenual and ventral ACC activation after 5 days of IBMT (2).

- Tang YY, et al. (2007) Short-term meditation training improves attention and self-regulation. *Proc Natl Acad Sci USA* 104:17152–17156.
- Tang YY (2008) *Exploring the Brain, Optimizing the Life* (Science Press, Beijing).
- Tang YY, Posner MI (2009) Attention training and attention state training. *Trends Cogn Sci* 13:222–227.
- Gallagher S (2006) *How the Body Shapes the Mind* (Oxford Univ Press, New York).
- Niedenthal PM (2007) Embodying emotion. *Science* 316:1002–1005.
- Dijkstra K, Kaschak MP, Zwaan RA (2007) Body posture facilitates retrieval of autobiographical memories. *Cognition* 102:139–149.
- Goldman A, de Vignemont F (2009) Is social cognition embodied? *Trends Cogn Sci* 13:154–159.
- Bernstein DA, Borkovec TD (1973) *Progressive Relaxation Training* (Research Press, Champaign, IL).
- Benson H (1975) *The Relaxation Response* (Avon, New York).
- Allman JM, Hakeem A, Erwin JM, Nimchinsky E, Hof P (2001) The anterior cingulate cortex. The evolution of an interface between emotion and cognition. *Ann N Y Acad Sci* 935:107–117.
- Bush G, Luu P, Posner MI (2000) Cognitive and emotional influences in anterior cingulate cortex. *Trends Cogn Sci* 4:215–222.
- Posner MI, Rothbart MK (2007) *Educating the Human Brain* (APA Books, Washington, DC).
- Posner MI, Rothbart, Rueda MR, Tang YY (2009) Training effortless attention. *Effortless Attention: A New Perspective in the Cognitive Science of Attention and Action*, ed Bruya B (MIT Press, Cambridge, MA).
- Hampton AN, O'doherty JP (2007) Decoding the neural substrates of reward-related decision making with functional MRI. *Proc Natl Acad Sci USA* 104:1377–1382.
- Eisenberger NI, Lieberman MD, Williams KD (2003) Does rejection hurt? An fMRI study of social exclusion. *Science* 302:290–292.
- Crottaz-Herbette S, Menon V (2006) Where and when the anterior cingulate cortex modulates attentional response: Combined fMRI and ERP evidence. *J Cogn Neurosci* 18:766–780.
- Etkin A, Egner T, Peraza DM, Kandel ER, Hirsch J (2006) Resolving emotional conflict: A role for the rostral anterior cingulate cortex in modulating activity in the amygdala. *Neuron* 51:871–882.
- Posner MI, Rothbart MK, Sheese BE, Tang Y (2007) The anterior cingulate gyrus and the mechanism of self-regulation. *Cogn Affect Behav Neurosci* 7:391–395.
- Wallace RK (1970) Physiological effects of transcendental meditation. *Science* 167:1751–1754.
- Cahn BR, Polish J (2006) Psychological bulletin meditation states and traits: EEG, ERP, and neuroimaging studies. *Psychol Bull* 132:180–211.
- Jerath R, Edry JW, Barnes VA, Jerath V (2006) Physiology of long pranayamic breathing: neural respiratory elements may provide a mechanism that explains how slow deep breathing shifts the autonomic nervous system. *Med Hypotheses* 67:566–571.
- Jevning R, Wallace RK, Beidebach M (1992) The physiology of meditation: A review. A wakeful hypometabolic integrated response. *Neurosci Biobehav Rev* 16:415–424.
- Travis F (2001) Autonomic and EEG patterns distinguish transcending from other experiences during transcendental meditation practice. *Int J Psychophysiol* 42:1–9.
- Aftanas LI, Golosheikina SA (2001) Human anterior and frontal midline theta and lower alpha reflect emotionally positive state and internalized attention: High-resolution EEG investigation of meditation. *Neurosci Lett* 310:57–60.
- Kubota Y, et al. (2001) Frontal midline theta rhythm is correlated with cardiac autonomic activities during the performance of an attention demanding meditation procedure. *Brain Res Cogn Brain Res* 11:281–287.
- Takahashi T, et al. (2005) Changes in EEG and autonomic nervous activity during meditation and their association with personality traits. *Int J Psychophysiol* 55:199–207.
- Critchley HD, et al. (2003) Human cingulate cortex and autonomic control: Converging neuroimaging and clinical evidence. *Brain* 126(Pt 10):2139–2152.
- Critchley HD (2005) Neural mechanisms of autonomic, affective, and cognitive integration. *J Comp Neurol* 493:154–166.
- Matthews SC, Paulus MP, Simmons AN, Nelesen RA, Dimsdale JE (2004) Functional subdivisions within anterior cingulate cortex and their relationship to autonomic nervous system function. *Neuroimage* 22:1151–1156.
- Wong SW, Massé N, Kimmerly DS, Menon RS, Shoemaker JK (2007) Ventral medial prefrontal cortex and cardiovascular control in conscious humans. *Neuroimage* 35:698–708.
- Lutz A, Greischar LL, Rawlings NB, Ricard M, Davidson RJ (2004) Long-term meditators self-induce high-amplitude gamma synchrony during mental practice. *Proc Natl Acad Sci USA* 101:16369–16373.
- Newberg A, et al. (2001) The measurement of regional cerebral blood flow during the complex cognitive task of meditation: A preliminary SPECT study. *Psychiatry Res Neuroimaging Sect* 106:113–122.
- Newberg AB, Iversen J (2003) The neural basis of the complex mental task of meditation: Neurotransmitter and neurochemical considerations. *Med Hypotheses* 61:282–291.
- Critchley HD, Melmed RN, Featherstone E, Mathias CJ, Dolan RJ (2001) Brain activity during biofeedback relaxation: A functional neuroimaging investigation. *Brain* 124(Pt 5):1003–1112.
- Naccache L, et al. (2005) Effortless control: Executive attention and conscious feeling of mental effort are dissociable. *Neuropsychologia* 43:1318–1328.
- Montano N, Porta A, Malliani A (2001) Evidence for central organization of cardiovascular rhythms. *Ann N Y Acad Sci* 940:299–306.
- Pumprla J, Howorka K, Groves D, Chester M, Nolan J (2002) Functional assessment of heart rate variability: physiological basis and practical applications. *Int J Cardiol* 84:1–14.
- Delmonte MM (1985) Effects of expectancy on physiological responsiveness in novice meditators. *Biol Psychol* 21(2):107–121.
- Young JD, Taylor E (1998) Meditation as a voluntary hypometabolic state of biological estimation. *News Physiol Sci* 13:149–153.
- Beckmann M, Johansen-Berg H, Rushworth MF (2009) Connectivity-based parcellation of human cingulate cortex and its relation to functional specialization. *J Neurosci* 29:1175–1190.
- Brefczynski-Lewis JA, Lutz A, Schaefer HS, Levinson DB, Davidson RJ (2007) Neural correlates of attentional expertise in long-term meditation practitioners. *Proc Natl Acad Sci USA* 104:11483–11488.
- Calkins SD, Bell MA, eds (2009) *Child Development at the Intersection of Emotion and Cognition* (APA Books, Washington, DC).
- Lutz A, Brefczynski-Lewis J, Johnstone T, Davidson RJ (2008) Regulation of the neural circuitry of emotion by compassion meditation: Effects of meditative expertise. *PLoS ONE* 3:e1897.
- Mohanty A, et al. (2007) Differential engagement of anterior cingulate cortex subdivisions for cognitive and emotional function. *Psychophysiology* 44:343–351.
- Ochsner KN, Gross JJ (2005) The cognitive control of emotion. *Trends Cogn Sci* 9:242–249.
- Siegel DJ (2007) *The Mindful Brain: Reflection and Attunement in the Cultivation of Well-Being* (Norton, New York).
- Wager TD, Davidson ML, Hughes BL, Lindquist MA, Ochsner KN (2008) Prefrontal-subcortical pathways mediating successful emotion regulation. *Neuron* 59:1037–1050.
- Critchley HD (2004) The human cortex responds to an interoceptive challenge. *Proc Natl Acad Sci USA* 101:6333–6334.
- Barbas H, Saha S, Rempel-Clower N, Ghahghaei T (2003) Serial pathways from primate prefrontal cortex to autonomic areas may influence emotional expression. *BMC Neurosci* 4:25.
- Johansen-Berg H, et al. (2008) Anatomical connectivity of the subgenual cingulate region targeted with deep brain stimulation for treatment-resistant depression. *Cereb Cortex* 18:1374–1383.

51. Raichle ME, et al. (2001) *Proc Natl Acad Sci USA* 98:676–682.
52. Fox MD, et al. (2005) The human brain is intrinsically organized into dynamic, anticorrelated functional networks. *Proc Natl Acad Sci USA* 102:9673–9678.
53. Teves D, Videen TO, Cryer PE, Powers WJ (2004) Activation of human medial prefrontal cortex during autonomic responses to hypoglycemia. *Proc Natl Acad Sci USA* 101:6217–6221.
54. Dosenbach NU, Fair DA, Cohen AL, Schlaggar BL, Petersen SE (2008) A dual-networks architecture of top-down control. *Trends Cogn Sci* 12:99–105.
55. Corbetta M, Shulman GL (2002) Control of goal-directed and stimulus-driven attention in the brain. *Nat Rev Neurosci* 3:201–215.
56. Dosenbach NU, et al. (2007) Distinct brain networks for adaptive and stable task control in humans. *Proc Natl Acad Sci USA* 104:11073–11078.
57. Fox MD, Raichle ME (2007) Spontaneous fluctuations in brain activity observed with functional magnetic resonance imaging. *Nat Rev Neurosci* 8:700–711.
58. Lazar SW, et al. (2005) Meditation experience is associated with increased cortical thickness. *NeuroReport* 16:1893–1897.
59. Volle E, et al. (2008) The functional architecture of the left posterior and lateral prefrontal cortex in humans. *Cereb Cortex* 18:2460–2469.
60. Anderson JR, Fincham JM, Qin Y, Stocco A (2008) A central circuit of the mind. *Trends Cogn Sci* 12:136–143.
61. Pagnoni G, Cekic M (2007) Age effects on gray matter volume and attentional performance in Zen meditation. *Neurobiol Aging* 28:1623–1627.
62. Kjaer TW, et al. (2002) Increased dopamine tone during meditation-induced change of consciousness. *Brain Res Cogn Brain Res* 13:255–259.
63. Mason MF, et al. (2007) Wandering minds: The default network and stimulus-independent thought. *Science* 315:393–395.
64. Smallwood J, Schooler JW (2006) The restless mind. *Psychol Bull* 132:946–958.
65. Farb NA, et al. (2007) Attending to the present: Meditation reveals distinct neural modes of self-reference. *Soc Cogn Affect Neurosci* 2:313–322.
66. Pagnoni G, Cekic M, Guo Y (2008) “Thinking about not-thinking”: Neural correlates of conceptual processing during Zen meditation. *PLoS ONE* 3:e3083.
67. Hagmann P, et al. (2008) Mapping the structural core of human cerebral cortex. *PLoS Biol* 6:e159.
68. Gusnard DA, Raichle ME, Raichle ME (2001) Searching for a baseline: Functional imaging and the resting human brain. *Nat Rev Neurosci* 2:685–694.
69. Lou HC, et al. (2004) Parietal cortex and representation of the mental self. *Proc Natl Acad Sci USA* 101:6827–6832.
70. Cavanna AE, Trimble MR (2006) The precuneus: A review of its functional anatomy and behavioural correlates. *Brain* 129(Pt 3):564–583.
71. Skinner JE (1991) Brain control of cardiovascular dynamics. *Electroencephalogr Clin Neurophysiol Suppl* 42:270–283.
72. Oppenheimer SM, Gelb A, Girvin JP, Hachinski VC (1992) Cardiovascular effects of human insular cortex stimulation. *Neurology* 42:1727–1732.
73. Oppenheimer SM, Kedem G, Martin WM (1996) Left-insular cortex lesions perturb cardiac autonomic tone in humans. *Clin Auton Res* 6:131–140.
74. Allman JM, Watson KK, Tetreault NA, Hakeem AY (2005) Intuition and autism: A possible role for Von Economo neurons. *Trends Cogn Sci* 9:367–373.
75. Nimchinsky EA, et al. (1999) A neuronal morphologic type unique to humans and great apes. *Proc Natl Acad Sci USA* 96:5268–5273.
76. Critchley HD, Wiens S, Rotshtein P, Ohman A, Dolan RJ (2004) Neural systems supporting interoceptive awareness. *Nat Neurosci* 7:189–195.
77. Craig AD (2003) Interoception: The sense of the physiological condition of the body. *Curr Opin Neurobiol* 13:500–505.
78. Bud Craig AD (2009) How do you feel—now? The anterior insula and human awareness. *Nat Rev Neurosci* 10:59–70.
79. Hölzel BK, et al. (2008) Investigation of mindfulness meditation practitioners with voxel-based morphometry. *Soc Cogn Affect Neurosci* 3:55–61.
80. Lutz A, Slagter HA, Dunne JD, Davidson RJ (2008) Attention regulation and monitoring in meditation. *Trends Cogn Sci* 12:163–169.
81. Travis F, Wallace RK (1999) Autonomic and EEG patterns during eyes-closed rest and transcendental meditation (TM) practice: The basis for a neural model of TM practice. *Conscious Cogn* 8:302–318.
82. Murata T, et al. (2004) Individual trait anxiety levels characterizing the properties of Zen meditation. *Neuropsychobiology* 50:189–194.
83. Talbot PS, Cooper SJ (2006) Anterior cingulate and subgenual prefrontal blood flow changes following tryptophan depletion in healthy males. *Neuropsychopharmacology* 31:1757–1767.