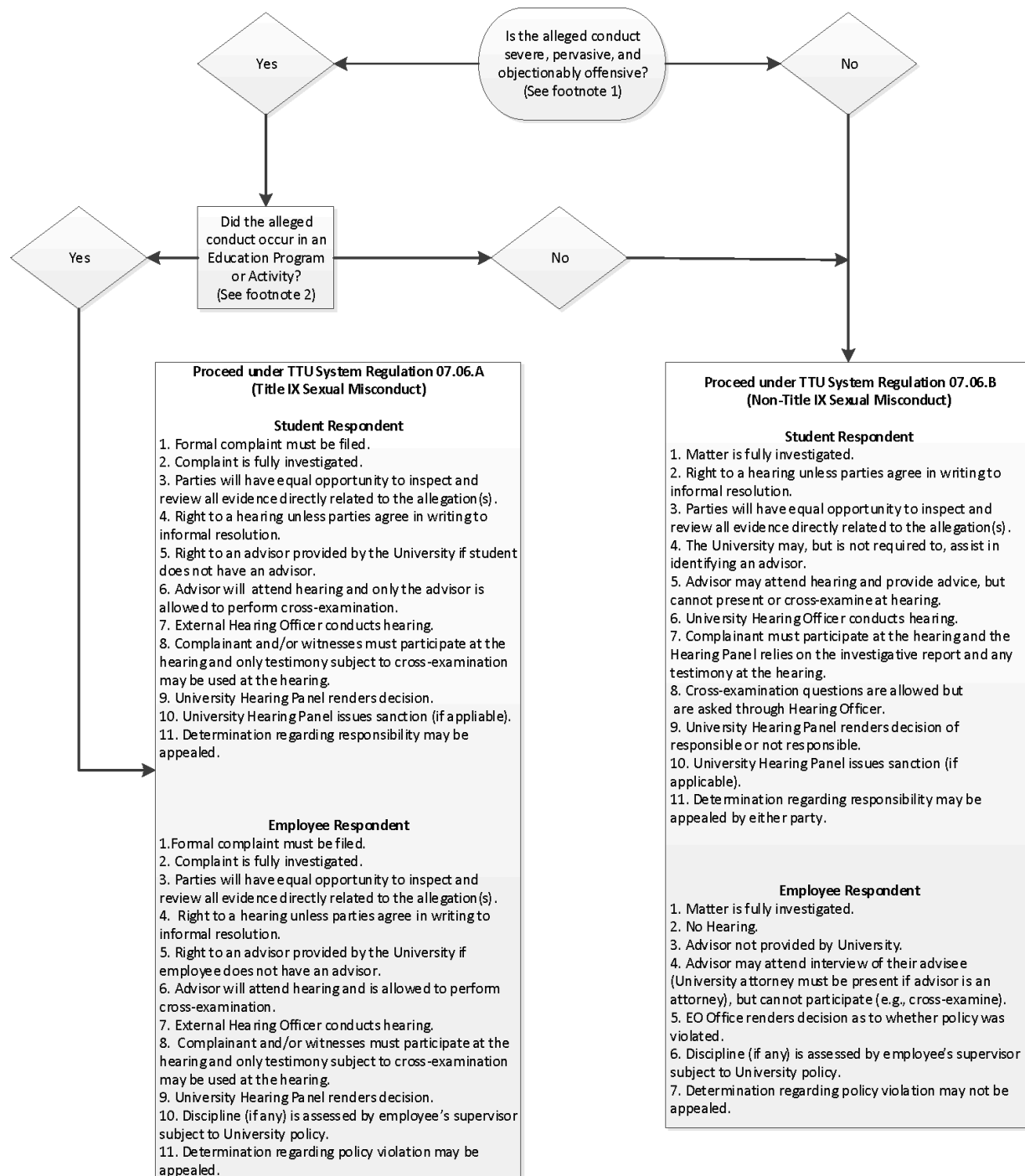


Texas Tech University System Regulation 07.06.A – Attachment 1

Sexual Misconduct Policy Applicability Flowchart



Footnotes

1. Items that are automatically considered to meet this standard include, but are not limited to, the following (as each are defined in TTU System Regulation 07.06.A):

- A. Sexual assault;
- B. Dating violence, domestic violence, or stalking; and
- C. Quid pro quo.

2. "Education program or activity" includes locations, events, or circumstances over which the University exercised substantial control over both the respondent and the context in which the alleged sexual harassment occurred, and also includes any building owned or controlled by a student organization that is officially recognized by the University. See 34 CFR 106.44.